

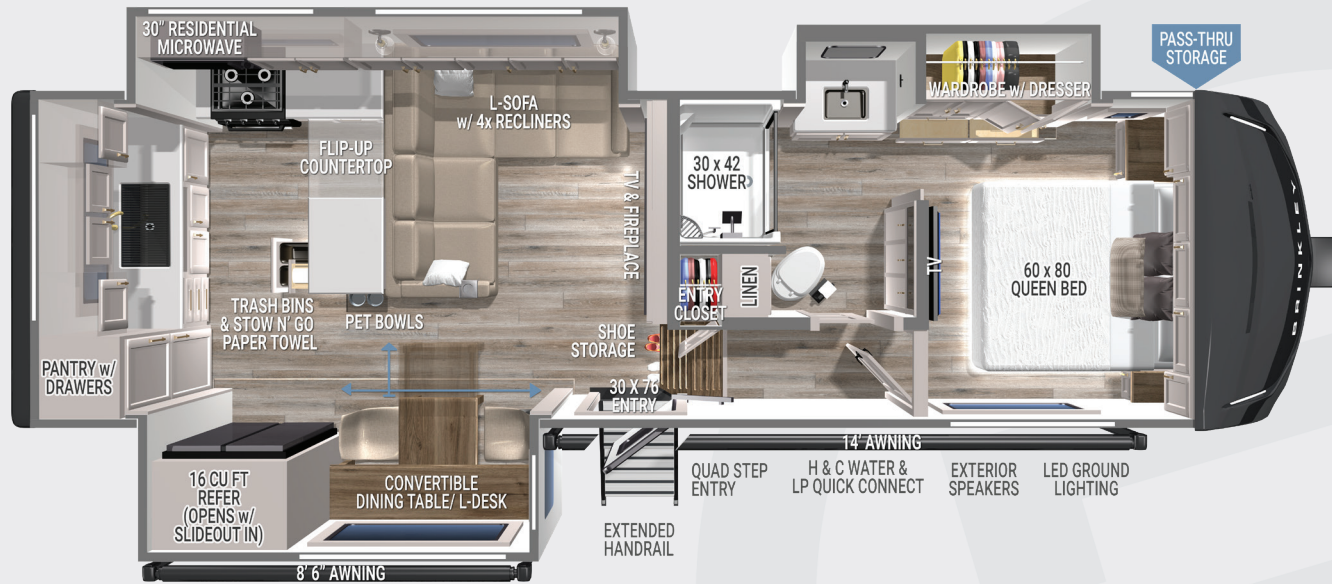
PRE-PRODUCTION PREVIEW

# MODEL Z 2700

Colton RV & Marine  
3122 Niagara Falls Blvd.  
North Tonawanda, NY 14120  
(716) 694-0188  
www.ColtonRV.com

Colton RV & Marine  
3443 Southwestern Blvd.  
Orchard Park, NY 14127  
(716) 957-3250  
www.ColtonRV.com

Colton RV & Marine  
489 Bushkill Plaza LN #9665  
Wind Gap, PA 18091  
(610) 863-5239  
www.ColtonRV.com  
Standard Run MSRP \$118,353



## SPECIFICATIONS:

- UVW – 11,462 lbs.
- GVWR – 14,995 lbs.
- Hitch Weight – 2,081 lbs.
- Exterior Length – 29' 11"
- Overall Height w/ AC – 13' 2"
- Width – 96"
- Bath & Bedroom Height - 79 ½"
- Slide Height - 76"
- Axles – Tandem 7,000 lbs.
- Wheels & Tires – 17.5" H-Rated
- Fresh Water Capacity – 75 gal
- Gray Water Capacity – 85 True + 30 gal
- Black Water Capacity – 40 gal
- Insulation – Floors/Ceiling R40, Walls R11

## FEATURES:

- L-Sofa w/ 4x Recliners
- Convertible Dining Room Table/L Desk (Seating up to 4)
- 65" Articulating TV
- 5,000 BTU Fireplace
- Rockford Stereo w/ App Control
- Solid Surface Countertops & Dishwasher Prep
- Brinkley CraftSense™ Wood Trim Construction
- Premium Residential Cabinets & Drawers w/ Dovetail Joints
- Kitchen & Living Room Flush Floor Main Slides
- Road Mode: Bedroom & Bathroom w/ Slide In
- 13.5k Front AC w/ Heat Pump
- Furrion 18k Chill® Cube Rear AC
- Large Pantry w/ Pull-Out Drawers

- One-Piece Fiberglass Shower
- Residential Queen Memory Foam Mattress w/ Nightstands, Outlets & USB & USB-C
- Square Euro Frameless Windows w/ 6" Openings
- Integrated Window Screens & Insulated Blackout Blinds
- Brinkley Automotive-Grade Sealant Package
- Automotive Grade Front Cap, Lights, & Lens
- Sleek Styling w/ Automotive-Grade Exterior Graphics
- 2 - Hot/Cold Outdoor Showers (BOTH Sides of Coach)
- Tankless On-Demand Water Heater
- Under I-Beam Storage Boxes
- One-Touch Automatic 4-Point Leveling System
- On-Command™ Utility Center w/ Retractable 65' Water Hose

- Heated & Enclosed Underbelly (Circulated)
- Heated Tanks w/ Electric Waste Valves w/ Manual-Override
- CURT Touring Coil Suspension System w/ ABS Brakes Sway Control w/ Brake Boosters
- CURT Helux™ King Pin w/ Coil Spring & Shock-Absorber
- 370W Solar Panel w/ 50AMP MPPT Controller (Inverter Prep & Lithium Ready)

## FACTORY OPTIONS:

- Dual Pane Windows \$1,731
- Gen-Y® Executive Gooseneck w/ SnapLatch Torsion Flex \$1,876
- Premium Exterior Pkg. w/ Full Body Paint (Silver, White, or Gold) \$23,900

Optional equipment & props may be shown.  
All content is subject to change without notice.  
Please consult with your dealer for current information.



For More Information, Photos, Videos  
& Why Brinkley go to **BrinkleyRV.com**



111025