



The perfect combination of style, comfort  
and efficiency has just hit the road.







21B-Sandstone

### The wait is over.

If you've been looking for the versatility of a full-featured Class C motor home with the impressive driving performance of front-wheel drive, the new 2002 Vista is ready to answer the call. The Vista is a totally new and unique Class C motor home. Its front-wheel drive offers exceptional handling and its convenient size makes it a pleasure to drive and maneuver. A tough V6 engine with 201 horsepower offers surprising power and fuel efficiency. Overall design innovations include a comfortable, roomy interior and basement storage. In fact, the Vista has so many bells and whistles some bigger motor homes may be looking over their shoulders.



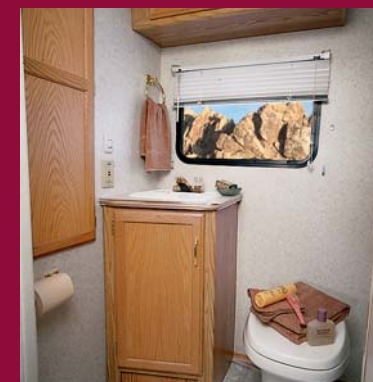
### A good night's rest.

Vista's versatile floorplan provides plenty of sleeping space. The dinette and couch easily convert into comfortable beds and the overhead bunk offers roomy accommodations.

### Room to move.

Thoughtful touches give the Vista's interior a feel that is much larger than its nimble 21-foot length. Overhead cabinets are plentiful and spacious while additional, conveniently accessible interior storage is provided under the couch and front dinette seat.

You'll appreciate the privacy provided by the pleated shades found in the lounge area. Interior comforts also rate an "A" with custom Stitchcraft furniture, carpeted living area and easy-to-clean Congoleum® floorcovering in the galley and bath areas.



### Just like home.

The rear bath area includes a good-size shower, molded sink and vanity, and a surprisingly spacious wardrobe. The toilet is residential height and features a foot-pedal flush for added convenience.



### A living space that encourages good living.

Whether your hobby is bird watching or people watching, Vista has plenty of room for comfortable living.





### Driving performance.

Essential controls are right at your fingertips, including the Sony® AM/FM cassette player with available CD player. Dual airbags provide safety and peace of mind. Additional touches include the heated windshield wiper washer nozzles, fresh filtered dash air system, and the one-touch power windows with a pinch guard feature. When the auto-up feature is active, the windows will retract automatically if resistance is noted.



### Put on your chef's hat.

There's no reason to curtail adventurous meal making. The fully equipped galley includes a three-burner Magic Chef® range/oven, available microwave and range top with storage (as part of the Deluxe Feature Package only), and a recessed stainless steel sink. The surrounding cabinetry has been designed to maximize its ample, convenient storage. The large handles enable easy opening and closing of both drawers and doors.



### Stock up, chill out.

The roomy single-door refrigerator with freezer provides ample cold storage for all your goodies. A shelf above the refrigerator is designed to accommodate a television (television not available) and is equipped with a 12-volt power receptacle and an antenna/cable connection.



### Lock it away.

Innovative use of space sets the Vista apart. A good example is the lockable storage box designed into the driver's door trim panel.



### The key to it all.

When not in use, the key folds into its handle, so it's easier on your pants pocket. The keyless entry remote, which locks and unlocks the cab doors, is built right into the handle, eliminating the need for a separate key chain transmitter.



### A good gauge.

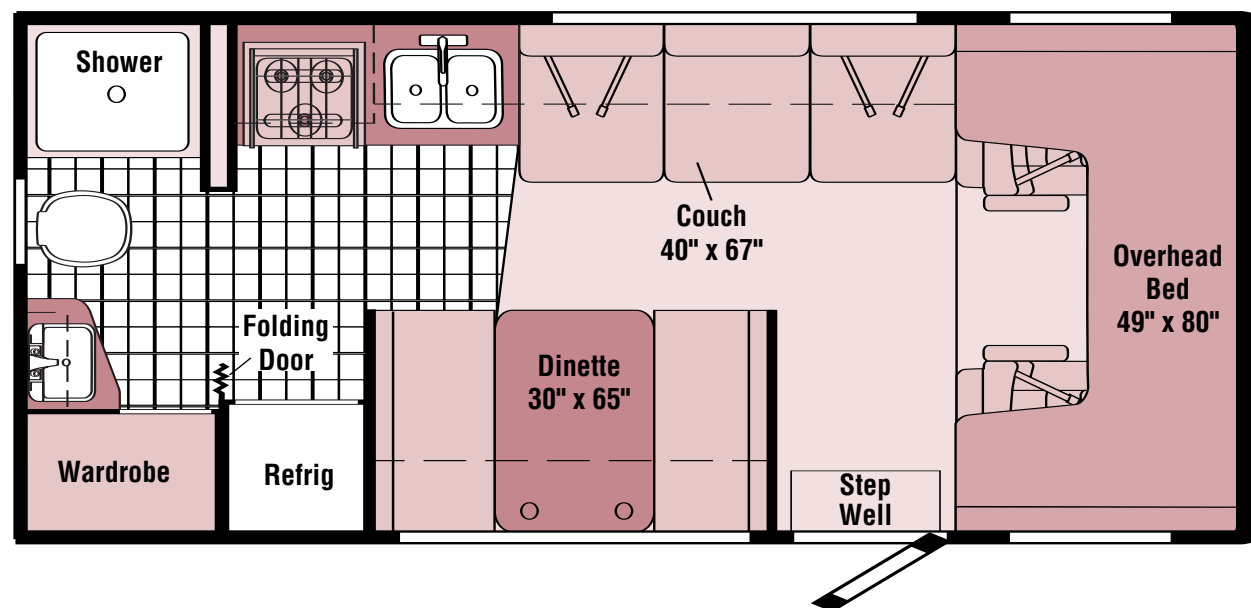
The conveniently located monitor panel features a flush-mount design. You can easily check and operate important functions such as tank levels, the generator start/stop switch,\* water pump and battery power.



### It's great outside.

Vista's one-piece fiberglass sidewalls are amazingly tough — typical for Winnebago Industries design. The combination of a powerful V6 engine that produces 201 horsepower and front-wheel drive allows for superior handling. Basement storage lets you bring along extra gear. Sixteen-inch aluminum wheels are available.

## FLOORPLAN



### 21B NEW!

- Convenient in-line galley
- Generous sleeping and seating accommodations
- Rear bath with large wardrobe
- Overhead bunk area



Vinyl Floorcovering

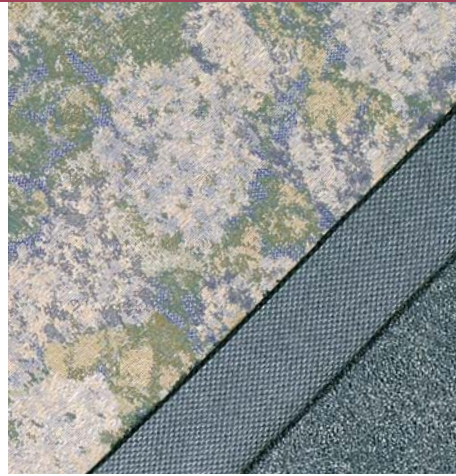


Seat Belts

Note: Dimensions shown are for sleeping space only and dashed lines denote overhead storage areas.



Aqua Frost



Bluestone



Portsmouth Oak Woodgrain



Sandstone



It's the little things. Of course, the medium and big-sized things are pretty neat too.



#### Cut the cord.

Some of the world's most beautiful places don't have places to plug in. But that doesn't matter to a Vista owner thanks to the available Onan® MicroLite™ 2.8 kW generator.



#### All the horses you need.

Vista features a fuel-efficient 201 hp, 24-valve, dual overhead cam, 2.8 liter, V6 engine. You'll appreciate the independent front torsion-bar suspension for superior maneuverability and handling.

#### Wheel nice.

Any way you look at it, the Vista's a beautiful vehicle. Especially when equipped with the available 16" aluminum wheels. Sporty, low-profile tires come standard.

#### See here.

Vista's low-mounted exterior mirrors are remote controlled and feature heated electric defrost for added convenience.



#### One good turn.

A tight turning radius and responsive rack-and-pinion steering make for easy maneuverability.

#### Easier access.

Cab doors open nearly 90° for easy access.

#### Smoother sailing.

Available adjustable rear auxiliary air springs help make your ride smooth.

#### Very cool.

Relax in comfort even on the hottest days with the available 7,100 BTU roof-mounted air conditioner. A 9,500 BTU roof-mounted air conditioner is also available as part of the Deluxe Feature Package.



#### Pack it away.

Who doesn't want to bring along extra gear? Pass-through basement storage lets you do just that.



#### You've got pull.

The available trailer hitch plus a powerful V6 engine gives Vista 2,000 pounds of towing capacity.□

#### Keep it clean.

The convenient location of Vista's available wash station keeps messy clean-up jobs outside. A second water pump switch is located in the compartment so you don't have to track inside to turn on the pump.



SPECIFICATIONS

	21B NEW
Length	21'4"
Exterior Height w/AC*	10'2"
Exterior Width	7'3"
Exterior Storage <sup>◇</sup> (cu. ft.)	30
Interior Height	6'5"
Interior Width	7'
Fresh Water Capacity w/Heater (gal.)	20
Holding Tank Capacity - Black/Gray (gal.)	16/16
LP Capacity <sup>◇</sup> (gal.)	5.9
Fuel Capacity (gal.)	21
GCWR (lbs.)	9,275
GVWR (lbs.)	7,275
GAWR - Front (lbs.)	3,527
GAWR - Rear (lbs.)	3,968
Wheelbase	152"

Standard - S      Optional - O      **21B**

AUTOMOTIVE/CHASSIS

Chassis - Volkswagen V6 2.8L fuel-injected gas engine, 201 hp, 4-speed electronically controlled automatic transmission, 280-amp battery/150-amp alternator, on-board vapor recovery system, <b>Tire</b> spare, <b>16" Tires &amp; Wheels</b> , <b>Tire Tools</b> jack, lug wrench, <b>4-Wheel Disc Brakes</b> , <b>Wheel Covers</b>	S
Air Springs auxiliary, 3T's	O
Trailer Hitch□ 2000-lb. drawbar/200-lb. maximum vertical tongue weight & wiring	O
Wheels* stylized aluminum	O

CAB AREA & DRIVER CONVENIENCES

Beverage Tray, Cab Seats (fabric) w/3-point adjustable seat belts, lumbar support, headrest, multi-adjustable slide/recline, <b>Cigarette Lighter/12-Volt Electrical Supply</b> , <b>Cruise Control</b> , <b>Hood Release</b> , <b>Map Lights (2)</b> , <b>Power Door Locks &amp; Windows</b> , <b>Steering Wheel</b> w/power assist, <b>Sunvisors (2)</b> , <b>Trim Panel</b> (driver side) lockable compartment, (passenger side) open compartment, <b>Windshield Wipers</b> intermittent	S
---------------------------------------------------------------------------------------------------------------------------------------------------------------------------------------------------------------------------------------------------------------------------------------------------------------------------------------------------------------------------------------------------------------------------------------------------------------------------------------------	---

ENTERTAINMENT

Radio (Cab) AM/FM stereo cassette, speakers (6), <b>TV Antenna</b> (amplified), 12-volt powerpoint, interior jack, coax wiring, cable input	S
Radio (Cab) AM/FM stereo CD, Sony	O

INTERIOR

Blinds mini, bathroom, <b>Bunk</b> front overhead w/mattress, sliding side windows, privacy curtain, <b>Clock</b> , <b>Curtain</b> front wraparound, <b>Lights</b> ceiling, incandescent w/wall switches, <b>Roof Vent</b> nonpowered, front overhead bunk, <b>Shades</b> pleated, dinette/lounge, <b>Wardrobe Cabinet</b> carpeted shelf, clothes rod	S
--------------------------------------------------------------------------------------------------------------------------------------------------------------------------------------------------------------------------------------------------------------------------------------------------------------------------------------------------------	---

CABINETRY

Woodgrain Portsmouth Oak stile-and-rail construction w/flat panel inserts	S
---------------------------------------------------------------------------	---

COUNTERTOPS

Laminate w/wood-look T-mold edge	S
----------------------------------	---

• The height of each model is based on the curb weight of a typically equipped unit on the standard chassis. The actual height of your vehicle may vary by as much as 2" depending on chassis or equipment variations.  
◇ Your motor home's load capacity is designated by weight, not by volume, so you cannot necessarily use all available space when loading your motor home.  
◇ Capacities shown are tank manufacturer's listed water capacity (W.C.). Actual filled LP capacity is 80% of listing due to overfilling prevention device on tank.  
\* Not all items available in combination. See dealer for details.    \*\* See your dealer for complete warranty documentation information.  
□ Actual towing capacity is dependent on your particular loading and towing circumstances which includes the GVWR, GAWR & GCWR as well as adequate trailer brakes. Please refer to your vehicle's operator's manual for further towing information.  
Winnebago Industries' continuing program of product improvement makes specifications, equipment, model availability and prices subject to change without notice. Comparisons to other motor homes are based on the most recent information available.

	21B
<b>FLOORCOVERING</b>	
Carpeting w/pad, Vinyl bath & galley	S

FURNITURE

Couch, Dinette access to storage below	S
----------------------------------------	---

GALLEY

Countertop Rail, Faucet single-control, Range Hood w/light & fan, Range 3-burner w/oven, Refrigerator/Freezer single-door, Norcold®, Roof Vent* nonpowered, Sink double, stainless steel, Wall Border	S
Microwave Oven* Samsung®	O
Range Top* 3-burner w/storage below	O

BATH

Cabinet lavatory, Cabinet medicine, Faucet (lavatory) dual-control, Faucet (shower) dual-control w/flexible showerhead, Roof Vent powered, Shower Curtain & Rod, Shower w/removable clothes rod & light, Sink rectangular, Tissue Holder, Toilet w/foot-pedal flush, Towel Bar, Towel Ring	S
--------------------------------------------------------------------------------------------------------------------------------------------------------------------------------------------------------------------------------------------------------------------------------------------	---

EXTERIOR

Awning Rail w/rain gutter, Door entrance w/separate screen door, deadbolt lock, Door fuel-fill, locking, Entrance Door Step single, manual, Lights porch light w/interior switch, Mirrors electric remote w/defrost, Mudflaps front & rear, Receptacle AC duplex, Sidewall Skin 1-piece smooth fiberglass, Storage Compartments valance panels, trunk liner	S
-------------------------------------------------------------------------------------------------------------------------------------------------------------------------------------------------------------------------------------------------------------------------------------------------------------------------------------------------------------	---

SYSTEMS

Air Conditioner Prep, Automotive Heater/Air Conditioner, Auxiliary Start Circuit, Battery (Coach) deep cycle, Battery Charge Control automatic dual, Drain 1" water tank, Drain water system, thru floor, Electrical System DC fuses, AC breakers,15-amp battery charger, 45-amp converter, Furnace 19,000 BTU, low profile, Generator Prep Kit, Monitor Panel wall-mount, battery condition gauge, generator hourmeter gauge,* generator start/stop switch,* holding tank levels, LP tank level, water heater light(s), water heater switch, water pump switch, water tank level, Power Cord 30-amp, Service Center (Drainage/Water) city water hookup, drainage valves, exterior wash station w/pump switch,* sewer hose, Sewer Hose 10', Tank LP, permanent mount w/gauge, Water Heater 6-gallon electronic ignition, LP gas, Water Heater Winterization Bypass Valve manual, Water Hookup city, Water Pump demand, Water System Winterizing Valve manual, Water Tank Fill gravity w/locking door	S
Air Conditioner (Roof)* 7,100 BTU	O
Deluxe Feature Package* stylized aluminum wheels, microwave oven w/3-burner range top & storage, 9,500 BTU high efficiency roof air conditioning	O
Generator* 2,800 watt, Onan® MicroLite,™ gas	O
Wash Station exterior w/lighted pump switch	O

SAFETY

Airbags driver & passenger, Assist Handle exterior, Assist Strap interior, Bumpers front & rear, Detectors/Alarms LP leak, smoke, carbon monoxide, Fire Extinguisher 10 B.C., Ground Fault Interrupter, Light center high-mount stop lamp, Lights daytime running lamps, Window escape	S
----------------------------------------------------------------------------------------------------------------------------------------------------------------------------------------------------------------------------------------------------------------------------------------	---

WARRANTY

12-month/15,000-mile basic limited warranty from Winnebago Industries,** 36-month/36,000-mile warranty on structure from Winnebago Industries,** 2-year/24,000-mile basic warranty on chassis/cab from Volkswagen of America, Inc.** 5-year/50,000-mile basic warranty on Powertrain from Volkswagen of America, Inc.**	S
-------------------------------------------------------------------------------------------------------------------------------------------------------------------------------------------------------------------------------------------------------------------------------------------------------------------------	---

## Not all motor homes are created equal.

As you take a closer look, you'll see that there is much more to the Winnebago Vista than a long list of standard features and a compelling floorplan. Beneath it all you'll find a SuperStructure™ foundation of strength and durability, and Winnebago Industries' recognized service and warranty support.

## We are committed to service.

We back our motor homes with the best after-the-sale service in the industry.

- 12-month/15,000-mile basic limited warranty
- 36-month/36,000-mile warranty on structure
- Complimentary 24-hour Roadside Assistance Program
- TripSaver emergency warranty parts shipments
- National Dealer service network

## Certified quality.

Recreation Vehicle Dealer Association members annually rate RV manufacturers on the quality of their products, and on their sales and service support. Winnebago Industries has achieved the coveted Quality Circle award every year since its inception, the only major motor home manufacturer to do so.

## Learn more about what sets Winnebago Industries apart.

Ask your dealer for this guide. It will help you learn what makes Winnebago Industries motor homes distinctly superior to other brands.

## Warning: Joining WIT has been known to cause excessive fun.

Winnebago-Itasca Travelers (WIT) is a club for owners of Winnebago Industries motor homes. WIT is a great way to meet people and offers you:

- Caravans and rallies
- Local and state group activities
- Benefits for RVers



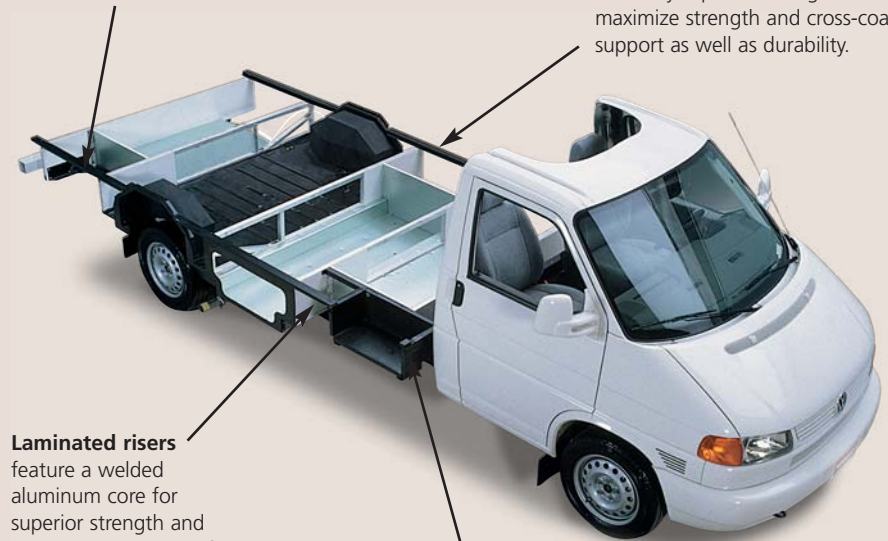
## SuperStructure

is the term given to Winnebago Industries' structural motor home design and construction. Rather than a single component, it is the culmination of design integration that incorporates steel and aluminum substructures, composite design laminated floor risers, interlocking joint technology, and Thermo-Panel® floor, roof and sidewalls to form a high-strength, durable vehicle body.



**Interlocking joint construction** utilizes advanced extruded aluminum structural components to create integrated floor-to-sidewall joints. This design effectively distributes the weight of the walls and roof, making a stronger and more durable body than competitor designs that rely on screws to carry the weight.

**The foundation substructure** assembly is precision-aligned to maximize strength and cross-coach support as well as durability.



**Laminated risers** feature a welded aluminum core for superior strength and provide a stable base for the floor structure and storage compartments.

**Critical steel components** are treated using an advanced electrodeposition coating process that provides superior corrosion protection.

Colton RV & Marine  
3122 Niagara Falls Blvd.  
North Tonawanda, NY 14120  
(716) 694-0188  
[www.ColtonRV.com](http://www.ColtonRV.com)

Colton RV  
489 Bushkill Plaza LN #9665  
Wind Gap, PA 18091  
(610) 863-5239  
[www.ColtonRV.com](http://www.ColtonRV.com)



© 2001 Winnebago Industries, Inc., Forest City, IA 50436. Printed in USA.

**Seat belts are your most important hookup. Always buckle up.**  
Visit us at [www.winnebagoind.com](http://www.winnebagoind.com)