



Light
SERIES



THE FIRST NAME IN CAMPING.
THE TRUSTED NAME IN RVS.



 **Dutchmen®**
Legendary Innovation. Trailblazing Value.

DISCOVER

THE COLEMAN LIGHT



HOME



YOUR HOME AWAY FROM HOME

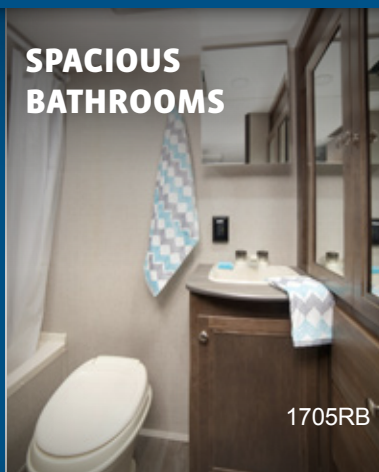
The Coleman Light Series was built for outdoor play and a relaxing indoor stay, delivering a feature-rich kitchen, Bluetooth entertainment system, power awning with LED patio lighting, as well as laminated floor and walls that increase durability and overall weight reduction.

REST EASY MATTRESS WITH UNDER BED STORAGE



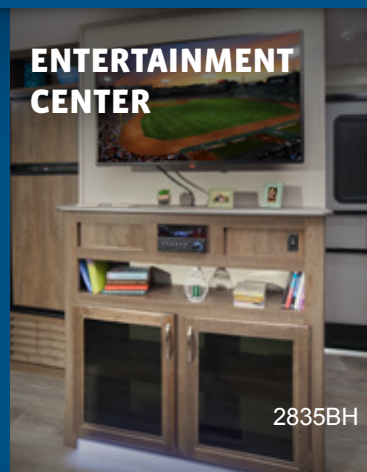
2835BH

SPACIOUS BATHROOMS



1705RB

ENTERTAINMENT CENTER



2835BH

AMPLE PANTRY STORAGE



2835BH



2835BH

iN-Command
CONTROL SYSTEMS

ALWAYS IN-COMMAND

The iN-Command touch pad and smartphone based apps help Coleman Light owners control features like the water pump, water heater, power awning and light fixtures - all without stumbling around in the dark for switches.



ELEVATED *Light* SERIES

Take your Coleman light to the next level with the Elevated Package. The added features such as an LED painted fiberglass front cap, trifold sofa, and motion sensor lighting add extra convenience for a more enjoyable camping experience. (Select floorplans only.)

UPGRADED RADIO AND SPEAKERS

2925RE

MOTION LIGHT

2925RE

TRIFOLD SOFA

2925RE



2925RE

EXPLORE

THE COLEMAN LIGHT



The Outdoor Company®

A ROOM WITH A VIEW

The large power awning comes complete with LED patio lighting to provide an ambiance perfect for late summer nights.

YOUR MOBILE PICNIC AREA

Take mealtime out of the kitchen with an exterior kitchenette packed with modern conveniences. This outdoor area brings with it a swivel grill and countertop area to fix campground food when a fire is out of the question.

ROOM FOR ALL THE ESSENTIALS

From sporting equipment to backup clothing and even souvenirs, tackle Mother Nature with all your gear in tow, thanks to a roomy pass-through storage space that can hold whatever the occasion calls for.

RESIDENTIAL COMFORTS

A Coleman kitchen always comes prepared with feature-rich amenities, like a commercial-grade faucet and large low-rise sink.

2835BH

EASY SETUP AND DEPARTURE

In addition to a fully-enclosed underbody that improves handling, the Light Series comes with easy-to-use electric stabilizer jacks, while the Light LX Series sports four high-capacity stabilizer jacks - each making setup and departure easier than ever.

COLEMAN LIGHT FEATURES AND OPTIONS

LIGHT PACKAGE

Aluminum Framed Walls
Crowned Galvanized Stamped Steel Rafters
Aluminum Frame Vacuum Bonded Laminated Floor
Enclosed & Insulated Underbelly
Awning
Front Rockguard Plate
Tinted Saftey Glass Windows
Front & Rear Jacks
Easy Lube Axles
Radial Tires w/ Spoke Rims
13,500 BTU Air Conditioner
Detachable 30 Amp Power Cord
120V Exterior Outlet
Exterior TV Connection on Entry Door Side
Dual 20# LP Bottles with ABS Cover
6 Gallon Gas/ Electric DSI Water Heater
28" Entrance Door(s)
Large Entry Assist Handle (Main Door)
Porch Light with Interior Switch
Aluminum Tread Folding Entry Steps (Double/ Triple)
Slam Latch Baggage Doors
Magnetic Baggage Door Catches
Solid Slate Converter w/ Built in Battery Charger
Interior Power Command Center
Full Extension Drawer Glides Throughout
Pleated Night Shades - Living Area & Bedroom
Residential Grade Vinyl Flooring
Thermoformed Kitchen Countertops
Dinette Storage Compartment
Bunk Bed Storage Pockets (select models)
Under Bed Storage
Upgraded Rest Easy Mattress
Bedroom TV Hook Up
USB Power Outlets
Range Panel With Uplighting
Everwear Luxury Furniture
Upgraded Residential Styled Sofa w/ Center Arm Rest
2 Swivel Rockers (Model Specific)
Cable/Satellite TV Hook Up
Stereo AM/FM/CD/DVD/AUX

Glass Shower Door (FP Specific)
Shower Curtain Rod (Tub Models)
Power Bath Fan
Foot Pedal Flush Toilet
Wooden Medicine Cabinet w/ Mirror
Residential Galley Sink w/ High Rise Faucet
6 Cubic Foot Double Door Refer w/ Black Insert
Oven with 3 Burner Range
Microwave
Range Hood w/ 12V Light & Exhaust Fan

GATEWAY LUXURY PACKAGE

Power Awning with LED Patio Light
Stainless Steel Appliance Upgrade
Power Stabilizer Jacks
Spare Tire w/ Carrier
Solar Charging Connection
Exterior Speakers
Outside Shower with Hot and Cold Water Connection
Backup Camera Prep

ELEVATED PACKAGE (SELECT MODELS)

Aerodynamic Painted Front Cap w/ LED Lights
Tri-Fold Sleeper Sofa
Motion Sensor Convenience Lights
Upgraded Sound System

OPTIONAL EQUIPMENT

iN-Command Remote Operating System
15,000 BTU A/C IPO 13,500 (mandatory on select models)
50 Amp Power with Prep for 2nd A/C (select models)
LED High Definition TV
Winterization
CSA Upfit & Seal

MANDATORY OPTIONS

iN-Command Remote Operating System
Light Package
Gateway Luxury Package
Elevated Package (Select Models Only)

LX SERIES FEATURES AND OPTIONS

LIGHT LX PACKAGE

Aluminum Framed Walls
Crowned Galvanized Stamped Steel Rafters
Aluminum Frame Vacuum Bonded Laminated Floor
Awning
Front Rockguard Plate
Tinted Saftey Glass Windows
Front & Rear Jacks
Easy Lube Axles
Radial Tires w/ Spoke Rims
13,500 BTU Air Conditioner
Detachable 30 Amp Power Cord
120V Exterior Outlet
Dual 20# LP Bottles with ABS Cover
6 Gallon Gas/ Electric DSI Water Heater
28" Entrance Door(s)
Porch Light with Interior Switch
Double Entry Step
Magnetic Baggage Door Catches
Solid Slate Converter w/ Built in Battery Charger
Interior Power Command Center
Full Extension Drawer Glides Throughout
Pleated Night Shades - Living Area & Bedroom
Residential Grade Vinyl Flooring
Thermoformed Kitchen Countertops
Dinette Storage Compartment (select models)
Under Bed Storage (select models)
Upgraded Rest Easy Mattress
Bedroom TV Hook Up (select models)
Everwear Luxury Furniture
Cable/Satellite TV Hook Up
4.2 Cubic Ft Single Door Refer (select models)
Stereo AM/FM/CD/AUX
Shower Curtain Rod
Power Bath Fan
Foot Pedal Flush Toilet
Medicine Cabinet w/ Mirror
6 Cubic Foot Double Door Refer w/ Black Insert (select models)
Microwave
Range Hood w/ 12V Light & Exhaust Fan

ESCAPE PACKAGE

Power Awning with LED Patio Light
Spare Tire w/ Carrier
Solar Charging Connection
Backup Camera Prep
Exterior Speakers
Black Steel Spoke Sport Wheels

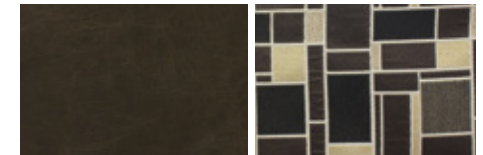
OPTIONAL EQUIPMENT

CSA Upfit & Seal

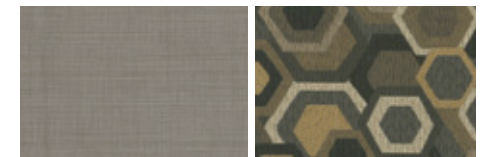
MANDATORY OPTIONS

Light LX Package
Escape Package

COLEMAN DECOR



MACKINAC DECOR

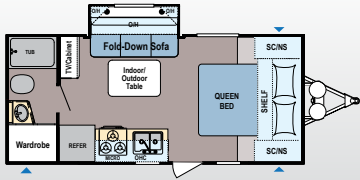


BAYSIDE DECOR



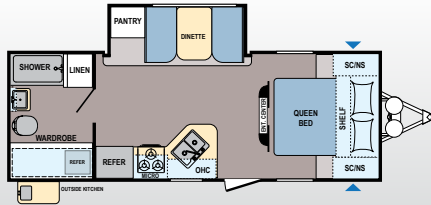
To check for recent updates to floorplans and specifications. Scan this **QR CODE** with your favorite QR Reader application.

COLEMAN LIGHT FLOORPLANS



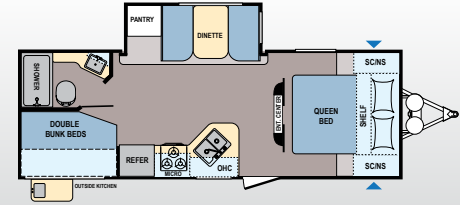
LIGHT | 1805RB | Sleeps 4

Ext. Length: 22' 9" Ext. Height: 10' 10" Average Shipping Weight: 4,136



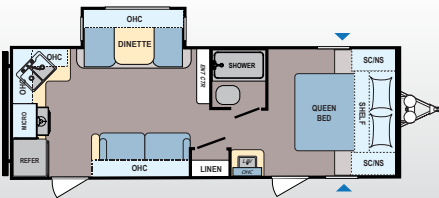
LIGHT | 2305QB | Sleeps 4

Ext. Length: 27' 0" Ext. Height: 10' 10" Average Shipping Weight: 4,901



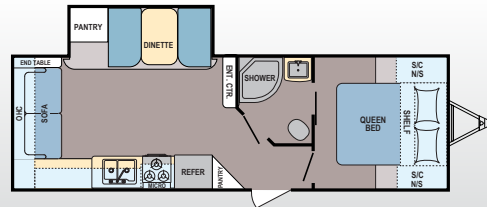
LIGHT | 2405BH | Sleeps 6-8

Ext. Length: 27' 6" Ext. Height: 10' 11" Average Shipping Weight: 5,025



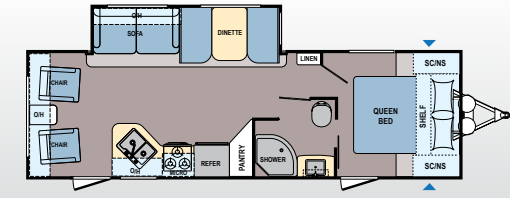
LIGHT | 2435BH | Sleeps 6-8

Ext. Length: 27' 6" Ext. Height: 10' 7" Average Shipping Weight: 4,892



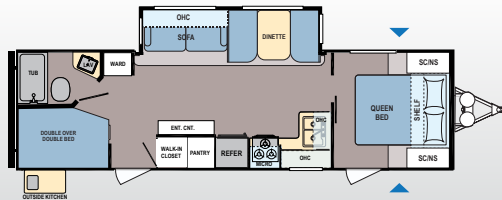
LIGHT | 2515RL | Sleeps 4-6

Ext. Length: 29' 5" Ext. Height: 10' 11" Average Shipping Weight: 5,260



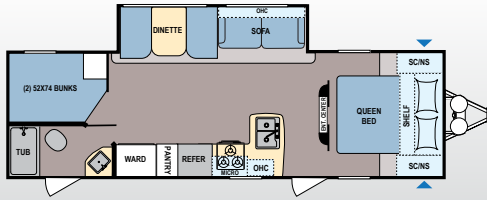
LIGHT | 2605RL | Sleeps 4-6

Ext. Length: 31' 1" Ext. Height: 10' 11" Average Shipping Weight: 5,612



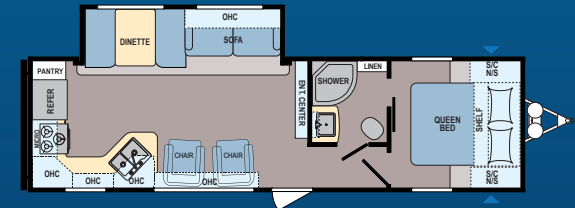
LIGHT | 2835BH | Sleeps 8-10

Ext. Length: 32' 11" Ext. Height: 10' 11" Average Shipping Weight: 6,026



LIGHT | 2855BH | Sleeps 8-10

Ext. Length: 31' 3" Ext. Height: 10' 11" Average Shipping Weight: 5,646



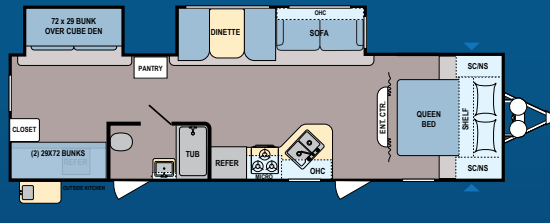
LIGHT ELEVATED | 2815RK | Sleeps 4-6

Ext. Length: 32' 11" Ext. Height: 11' 8" Average Shipping Weight: 6,086



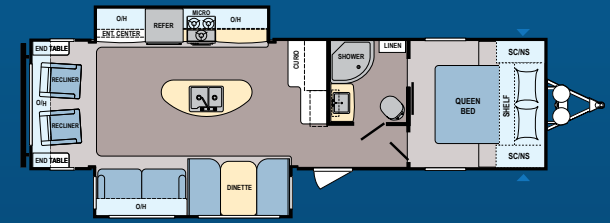
LIGHT ELEVATED | 2925RE | Sleeps 6-8

Ext. Length: 33' 11" Ext. Height: 11' 2" Average Shipping Weight: 6,622



LIGHT ELEVATED | 3015BH | Sleeps 8-10

Ext. Length: 34' 9" Ext. Height: 10' 9" Average Shipping Weight: 6,503

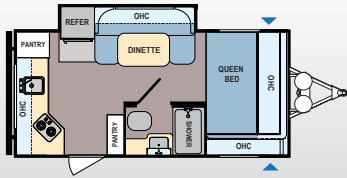


LIGHT ELEVATED | 3045RL | Sleeps 6-8

Ext. Length: 34' 10" Ext. Height: 11' 2" Average Shipping Weight: 6,966

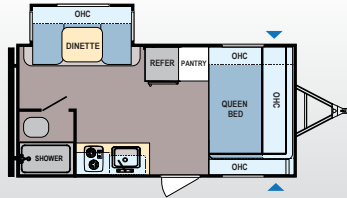
COLEMAN LIGHT ELEVATED MODELS

COLEMAN LIGHT LX MODELS



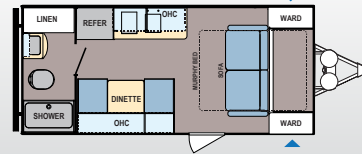
LIGHT LX | 1605FB | Sleeps 3-4

Ext. Length: 20' 8" Ext. Height: 10' 7"
Average Shipping Weight: 3,554



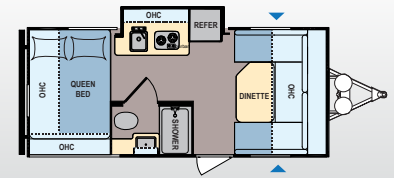
LIGHT LX | 1625RB | Sleeps 3-4

Ext. Length: 20' 6" Ext. Height: 10' 4"
Average Shipping Weight: 3,556



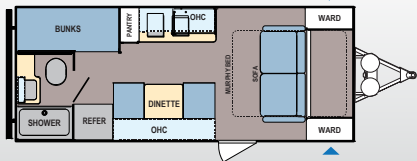
LIGHT LX | 1705RB | Sleeps 3-4

Ext. Length: 21' 11" Ext. Height: 10' 5"
Average Shipping Weight: 3,481



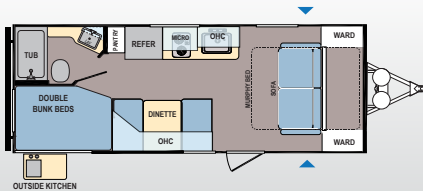
LIGHT LX | 1755FD | Sleeps 3-4

Ext. Length: 22' 4" Ext. Height: 10' 5"
Average Shipping Weight: 3,761



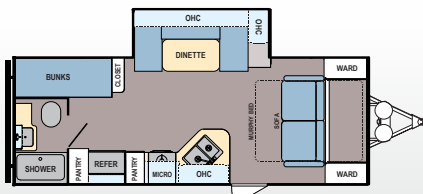
LIGHT LX | 1925BH | Sleeps 3-4

Ext. Length: 23' 10" Ext. Height: 10' 2" Average Shipping Weight: 3,793



LIGHT LX | 2125BH | Sleeps 5-6

Ext. Length: TBD Ext. Height: TBD Average Shipping Weight: TBD



LIGHT LX | 2155BH | Sleeps 5-6

Ext. Length: 25' 10" Ext. Height: 10' 9" Average Shipping Weight: 4,465

COLEMAN SPECIFICATIONS

DIMENSIONS				WEIGHTS (LBS.)		TANKS (GALS.)				
MODEL	FLOORPLAN	*EXTERIOR TRAVEL LENGTH	EXTERIOR WIDTH	EXTERIOR HEIGHT (WITH A/C)	**AVERAGE SHIPPING WEIGHT	DRY HITCH WEIGHT	CARGO CARRYING CAPACITY	***FRESH WATER CAPACITY	GREY WATER CAPACITY	BLACK WATER CAPACITY
LIGHT LX	1605FB	20' 8"	96"	127"	3,554	359	662	46	39	39
LIGHT LX	1625RB	20' 6"	96"	124"	3,556	396	2,340	46	39	28
LIGHT LX	1705RB	21' 11"	96"	125"	3,481	491	2,310	46	39	39
LIGHT LX	1755FD	22' 4"	96"	125"	3,761	562	1,930	46	39	39
LIGHT LX	1925BH	23' 10"	96"	123"	3,793	584	3,807	46	39	39
LIGHT LX	2125BH	TBD	96"	TBD	TBD	TBD	1,770	TBD	TBD	TBD
LIGHT LX	2155BH	25' 10"	96"	129"	4,465	580	2,298	46	39	28
LIGHT	1805RB	22' 9"	96"	130"	4,136	492	2,980	60	39	28
LIGHT	2305QB	27' 0"	96"	130"	4,901	507	2,894	60	42	42
LIGHT	2405BH	27' 6"	96"	131"	5,025	556	TBD	60	39	28
LIGHT	2435RK	27' 6"	96"	127"	4,892	590	2,726	60	39	28
LIGHT	2515RL	29' 5"	96"	131"	5,260	566	3,046	60	39	28
LIGHT	2605RL	31' 1"	96"	131"	5,612	712	2,894	60	39	28
LIGHT	2835BH	32' 11"	96"	131"	6,026	730	2,948	60	78	28
LIGHT	2855BH	31' 3"	96"	131"	5,646	741	725	60	67	28
ELEVATED SERIES	2815RK	32' 11"	96"	140"	6,086	784	651	60	78	28
ELEVATED SERIES	2925RE	33' 11"	96"	134"	6,622	844	714	60	39	28
ELEVATED SERIES	3015BH	34' 9"	96"	129"	6,503	755	806	60	39	28
ELEVATED SERIES	3045RL	34' 10"	96"	134"	6,966	980	3,493	60	39	28

*Our weights represent how most units are built, inclusive of many commonly-ordered options. **Length is defined as the distance from the centerline of hitch pin/coupler to rear bumper of trailer.

***Fresh water capacity includes water heater capacity.

NORTH AMERICA'S TRUSTED NAME IN RVs



Since 1900, the **Coleman® Company, Inc.** has led the world in manufacturing of camping gear and outdoor equipment. From the renowned Coleman lantern to stoves, tents, sleeping bags and coolers, Coleman's reputation for high-quality camping products is legendary.

Whether your outdoor activities involve hiking, camping, fishing, hunting, boating, swimming, tailgating or simply relaxing, Coleman offers everything you need to satisfy your family's dreams.

Coleman's floorplans are not only loaded with

added value and innovative features, they're designed to help your family get the most out of every camping experience.

After all, Coleman is Camping!

We invite you to visit your nearest Coleman RV dealer today, and find out for yourself why Coleman is the most respected name in outdoor recreation.





Manufactured under license by:
Dutchmen Manufacturing, Inc.
PO Box 2000 • 2164 Caragana Court
Goshen, Indiana 46527
(574) 537-0600
www.dutchmen.com

YOUR LOCAL DEALER

Colton RV
3122 Niagara Falls Blvd
North Tonawanda, NY 14120
(716) 694-0188
www.ColtonRV.com

Colton RV
3443 Southwestern Blvd.
Orchard Park, NY 14127
(716) 957-3250
www.Coltonrv.com

Disclaimer: Product information is as accurate as possible as of the date of publication of this brochure. Features, floorplans and specifications are subject to change without notice. Please consult our website for more current product information and specifications. Coleman®,  and  are trademarks of The Coleman® Company, Inc., and are used under license.