

Phaeton



TIFFIN MOTORHOMES

PHAETON® 2010

20
10



TIFFIN MOTORHOMES

WHEREVER YOU GO, WE GO.



MAROON CORAL EXTERIOR



SMART. BEAUTIFUL. POPULAR. NO WONDER IT'S AT THE HEAD OF THE CLASS.

How do you build the nation's best-selling Class A motor home? By offering affordable luxury in a diesel pusher – the extras that count, at an extra-impressive price. For 2010, we've made the Phaeton even better. Everywhere you look, you'll see the extra touches of Tiffin craftsmanship. The standard full body paint is clear-coated with a protective film that will keep your Tiffin looking beautiful for years. Four slides give you immense indoor living space. There's a new sixth color, Rocky Mountain Brown, a lighter option suggested by buyers like you. Your Phaeton is as ready for tailgating as you are, with an optional 32-inch LCD TV built into the galley slide exterior. Following more than one game? Never a problem; there are also LCD TVs in the living room, bedroom, and even an optional one above the driver's seat.

20
10
Phaeton



YOU'VE GOT THE BEST SEAT IN THE HOUSE.

COCKPIT

Every time you take the driver's seat, you'll remember why you chose a Tiffin. Control, comfort, and stability meet their match in a sturdy Freightliner® or Spartan chassis, paired with the impressive torque of a 360 horsepower Cummins engine. Driving is more comfortable supported by Flexsteel® Ultra Leather power seats with passenger footrest, an optional GPS system, and optional satellite radio. With seven-foot ceilings and floor plans from 36 to 42 feet, you'll never lack for space. Nor for convenience with our new single remote control for the TVs, DVD player, surround sound, and the optional satellite. Safety is along for the ride, too, with four airbags, side-view cameras, and a reverse activated camera.



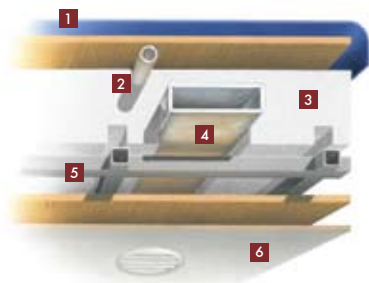


COCKPIT WITH NAVIGATION SYSTEM

ACTUALLY, YOU CAN ENGINEER HAPPINESS.

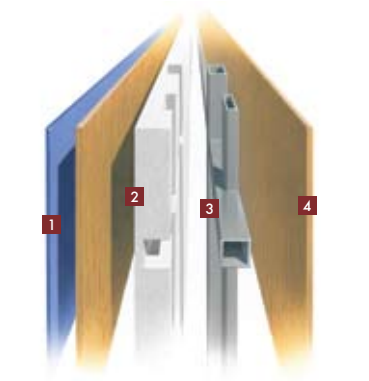
At Tiffin, our engineers employ innovative construction techniques, like the unique drainage system in the roof to channel A/C condensation. And we use high-quality components, such as laminated sidewalls and floors to provide ultimate durability and sturdiness on the road. This ensures our owners enjoy lasting value, year after year. For a complete list of specifications and options, please visit tiffinmotorhomes.com

CONSTRUCTION SPECIFICATIONS



ROOF

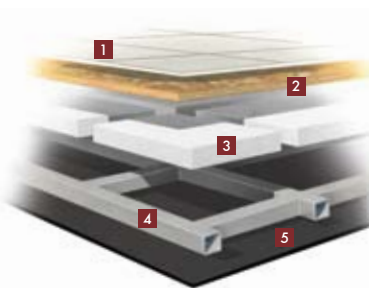
1. One-piece, moisture resistant molded fiberglass roof cap provides insulation and strength and prevents water intrusion
2. A/C Condensation Drainage System that runs internally through the roof insulation and down the sidewalls, redirecting water underneath the motor home
3. 5 1/2" formed insulation
4. Quiet Air Cooling System with return air and foil-wrapped cooling exhaust ducts
5. Durable, tubular aluminum roof skeleton
6. Easy-to-clean soft touch vinyl ceiling panel



SIDEWALL

1. Gel-coat fiberglass outside wall panel
2. High-performance thermal insulation
3. Durable, yet lightweight, tubular aluminum wall skeleton
4. Decorative inside wall panel

All sidewalls are approximately 2" thick.



FLOOR

1. Ceramic tile floor bonded to high-impact oriented strand board
2. High-level engineered oriented strand board
3. High-performance thermal insulation
4. Durable, tubular steel floor skeleton
5. Woven moisture barrier material

STRUCTURAL

STANDARD EQUIPMENT ON ALL MODELS:

- Laminated Floor, Sidewall & Roof
- Steel/Aluminum Reinforced Structure
- One-piece Molded Fiberglass Roof Cap

EXTERIOR

STANDARD EQUIPMENT ON ALL MODELS:

- Fiberglass Front & Rear Caps
- Hydraulic Automatic Leveling Jacks
- Large Tinted One-piece Windshield
- Chrome Heated Power Mirrors with Remote Adjustment
- Single Motor Intermittent Wiper
- Remote Locking System for Entry Door
- Deadbolt Front Entrance Door
- Lighted Exterior Storage
- Roof Ladder
- Docking Lights
- Heated Water & Holding Tank Compartments
- Four 6 V Auxiliary Batteries
- Park Telephone Ready
- Black Tank Flush System
- Water Filter
- Undercoating
- Lockable Swing-out Storage Doors with Gas Shocks
- Window Awning Package (2 Windows)
- Double Electric Step
- Dual Pane Windows
- Exterior Patio Light
- Automatic Door Awning
- Automatic Patio Awning
- Slide-out Covers
- Custom Mud Flap
- BASF Full Body Paint with Protective Film
- Dual Fuel Fills
- 110 V Exterior Receptacle
- Digital TV Antenna
- Power Fantastic® Roof Vent with 3-speed Fan
- Back-up Camera
- Side-view Cameras Activated by Turn Signals
- Cable Ready TV
- 2000 Watt Inverter with 100-amp Converter & Transfer Switching

EXTERIOR

AVAILABLE OPTIONS:	36 QSH	40 QTH	42 QBH	42 QRH
Spotlight	O	O	O	O
One Storage Compartment Slide-out Tray	O	O	O	O
Two Storage Compartment Slide-out Trays	NA	O	O	O
Hadley Air Horn	O	O	O	O
In-motion Satellite Dish	O	O	O	O
Automatic Satellite Dish	O	O	O	O
Exterior 32" LCD TV	O	O	O	O
8.0 kw Onan® Manual Slide-out Generator	S	S	NA	NA
Two 15,000 BTU Low Profile Roof Air Conditioners with Heat Pump	S	S	NA	NA
Three Low Profile Roof Air Conditioners with Heat Pump & 10.0 kw Onan® Generator	NA	O	S	S

TECHNICAL SPECIFICATIONS

AUTOMOTIVE

STANDARD EQUIPMENT ON ALL MODELS:

- Raised Rail Chassis Frame
 - Air Ride (4 Air Bags)
 - Aluminum Wheels
 - Exhaust Brake
- Adjustable Accelerator & Brake Pedals
 - Allison 3000 MH 6-speed Automatic Transmission
 - Air Brakes with Automatic Slack Adjusters & ABS
- 55° Wheel Cut
 - Fog Lights
 - Daytime Running Lights
- VIP 18" Steering Wheel
 - Cruise Control
 - Emergency Start Switch

CHASSIS	36 QSH	40 QTH	42 QBH	42 QRH
Freightliner Cummins ISC 360 HP/1050 lb. Torque	S	S	O	O
Spartan Cummins ISC 8.3-liter Engine 360 HP/1050 lb. Torque	NA	NA	O	O
GVWR	32,000	32,000	42,600	42,600
GAWR – Front	12,400	12,400	12,600	12,600
GAWR – Rear	20,000	20,000	20,000	20,000
GAWR – Tag Axle	NA	NA	10,000	10,000
GCWR	42,000	42,000	52,600	52,600
Alternator Amps	170	170	160	160
Wheel Base	228	266	296	296
Tire Size	275/80R22.5	275/80R22.5	275/80R22.5	275/80R22.5
Trailer Hitch Capacity (Pounds)	10,000	10,000	10,000	10,000
Fuel Tank (Gallons) - Dual Fuel Fill	100	100	100	100

OVERALL

	36 QSH	40 QTH	42 QBH	42 QRH
Overall Length – Approximately	36' 9"	40' 5"	42' 6"	42' 5"
Overall Height with Roof Air (Maximum)	12' 7"	12' 7"	12' 7"	12' 7"
Interior Height	84"	84"	84"	84"
Overall Width	101"	101"	101"	101"
Interior Width	96"	96"	96"	96"
Fresh Water (Gallons)	90	90	90	90
Black Water (Gallons)	50	50	50	50
Grey Water (Gallons)	70	70	70	70
LPG Tank (Gallons; can only be filled to 80% capacity)	35.7	35.7	35.7	35.7
Minimum Garage Height	13'	13'	13'	13'

DRIVER'S COMPARTMENT

STANDARD EQUIPMENT ON ALL MODELS:

- Flexsteel® Ultra Leather Power Driver & Passenger Seats with Passenger Footrest
 - Padded Dash
 - Custom Infrared Repeater System on all TVs
- Dual Dash Fans
 - Snack / Beverage Tray with Drawers
 - Dual 12 V Dash Receptacle
 - Single CD Player & AM / FM Stereo
- Color Rear Vision Monitor System with Side-view Cameras Activated by Turn Signals
 - Computer Slide-out Tray in Dash with Lock-out Rails
 - Fire Extinguisher
- Power Windshield Solar / Privacy Shade
 - Driver / Passenger Side Window Solar / Privacy Shades

AVAILABLE OPTIONS:	36 QSH	40 QTH	42 QBH	42 QRH
Satellite Radio (Requires Subscription)	O	O	O	O
32" LCD Front Overhead TV	O	O	O	O
In-dash Stereo / GPS	O	O	O	O



ENTERTAIN A CROWD.
OR GET AWAY FROM ONE.



LIVING AREAS

For 2010, living areas are more striking and versatile than ever. Among the options are two new color palettes, Phantom and Jasmine, and 2009's most popular interior, Montecito. An optional U-shaped booth next to the sofa bed provides more lounging comfort and sleeping space. Meal prep is a breeze with a four-door refrigerator, double-bowl stainless sink, ample countertop space courtesy of sink and range covers, and our unique Expand-an-island. Storage abounds with luxurious, hardwood-faced cabinets, an enormous closet, underbed stowage and a full basement. Plus, you'll appreciate the privacy of separate enclosed spaces for the water closet, lavatory, and shower with vanity.



CHOOSE YOUR BEAUTIFUL.

Engineering makes a Tiffin reliable, but design is what makes it unique. From cabinets crafted in our own cabinet shop to the designer-chosen finishes, here's everything you need to make your Phaeton your own. For a complete list of options and specifications, please visit tiffinmotorhomes.com

INTERIOR OPTIONS



Cabinet doors are made of solid wood, and all cabinet finishes are available in combination with any fabric scheme.

All options may not be available in every model.

Specifications and standard or optional equipment are subject to change without notice or obligation.

INTERIOR SPECIFICATIONS STANDARD EQUIPMENT ON ALL MODELS

LIVING AREA / DINETTE

- Ultra Leather DE Sofa Bed on Passenger's Side
- 32" LCD TV in Entertainment Center
- Booth Dinette with Laminate Tabletop & Solid Surface Edging
- Cloth DE Sofa Bed on Driver's Side

KITCHEN

- Solid Surface Countertop with Stainless Steel Sink
- Solid Surface Sink & Stove Covers
- Convection Microwave with Exterior Venting
- Sink & Stove Cover Racks (Underneath Sink)
- Single Lever Sink Faucet with Sprayer
- 4-door Refrigerator with Icemaker
- 3-burner Cooktop
- Built-in Soap Dispenser
- Expand-an-island

AVAILABLE OPTIONS:

	36 QSH	40 QTH	42 QBH	42 QRH
Residential Stainless Steel Refrigerator	O	O	O	O
Gas Oven	O	O	O	O

BATH

- Medicine Cabinet with Vanity Light
- Skylight in Shower with Sliding Solar Cover
- Solid Surface Vanity Top & Bowl
- Custom Raised Panel Bath Door
- Sprayer on Toilet
- Glass Shower Surround
- Glass Radius Shower Door
- 3-speed Fantastic® Fan
- Pfister™ Shower Head

BEDROOM

- Wardrobe with Automatic Lights
- Bed Comforter with Throw Pillows
- Pre-wired for DVD & Satellite Receiver
- Ceiling Fan
- Carbon Monoxide Detector
- LPG Leak Detector
- Chest of Drawers with Laundry Hamper
- 26" LCD TV
- Under Bed Storage
- Pillow Top Mattress
- Wood Headboard

AVAILABLE OPTIONS:

	36 QSH	40 QTH	42 QBH	42 QRH
King Bed Mattress (72" x 80")	NA	O	O	O
Select Comfort™ (Dual Control) Bed System - Queen (60" x 80")	O	O	O	O
Select Comfort™ (Dual Control) Bed System - King (72" x 80")	NA	O	O	O
Memory Foam Mattress - Queen (60" x 80")	O	O	O	O
Memory Foam Mattress - King (72" x 80")	NA	O	O	O
Tile Flooring in Bedroom	NA	NA	O	NA

GENERAL INTERIOR

- 7' Ceilings
- Soft Touch Vinyl Ceiling with Trey Ceiling in Living Area
- Ceramic Tile Floor in Kitchen, Living Area, Bath & Entry Landing
- Carpeting in Bedroom & Driver's Compartment with Scotchgard®
- Tank Level Monitor System
- Fantastic® Power Roof Vents with 3-speed Fans
- Raised Panel Hardwood Cabinet Doors & Drawers
- Two Ducted Furnaces (One 30,000 BTU & One 35,000 BTU)
- Solid Wood Cabinet Faces with Concealed Hinges
- 12 V Disconnect Switch
- Bullet Lights in Ceiling
- Smoke Detector
- 10-gallon Gas / Electric Water Heater
- Air Driven Step Well Cover
- Complete Cable Wiring Interfacing with Surround Sound & Satellite Receivers
- Home Theatre Sound System with Concealed Speakers
- Medium Alderwood Cabinetry
- Solar & Privacy RollEase® Shades

AVAILABLE OPTIONS:

	36 QSH	40 QTH	42 QBH	42 QRH
Combo Washer / Dryer	O	O	O	O
Stacked Washer / Dryer	O	O	O	O
Central Vacuum Cleaner	O	O	O	O
Cherry Bark Solid Cabinet Doors & Drawer Fronts	O	O	O	O

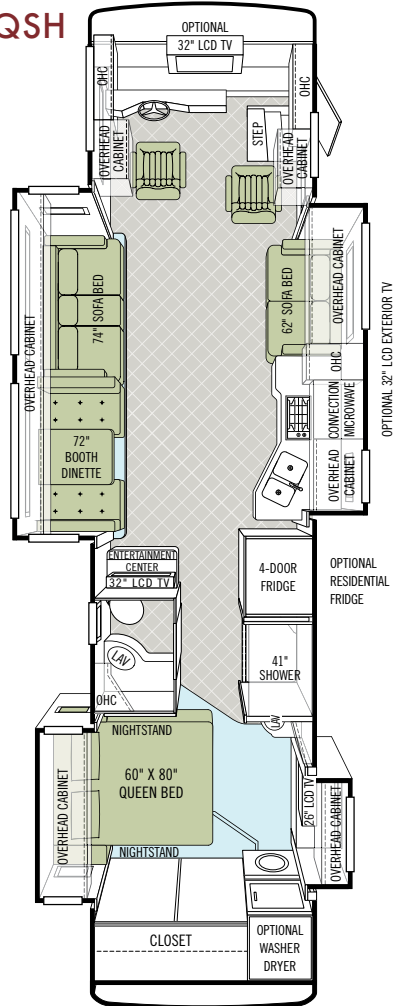
PASSENGER'S SIDE AVAILABLE OPTIONS:

	36 QSH	40 QTH	42 QBH	42 QRH
Cloth DE Sofa Bed	O	O	O	O
Leather Air Coil® Hide-a-bed	NA	O	O	O

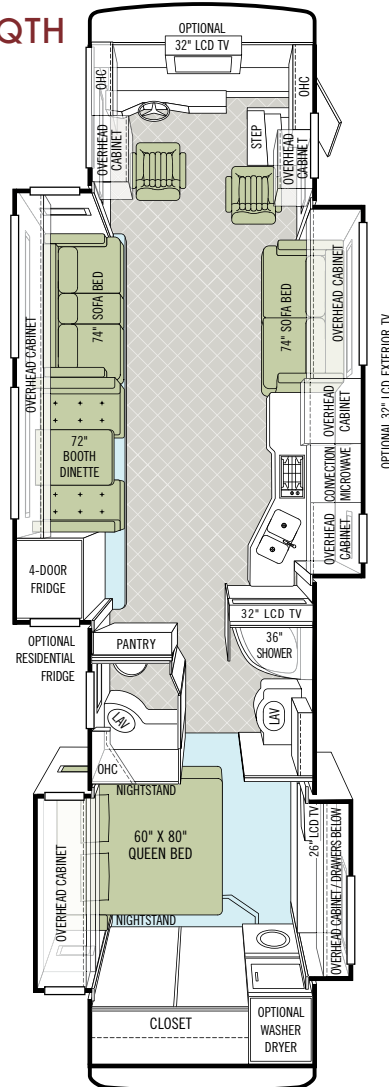
DRIVER'S SIDE AVAILABLE OPTIONS:

	36 QSH	40 QTH	42 QBH	42 QRH
Cloth Air Coil® Hide-a-bed	O	NA	NA	NA
Ultra Leather Air Coil® Hide-a-bed	O	NA	NA	NA
Ultra Leather DE Sofa Bed	O	O	O	O
Ultra Leather Magic Bed	O	O	O	O
Cloth Magic Bed	O	O	O	O
Two Leather Euro Recliners	NA	O	O	O

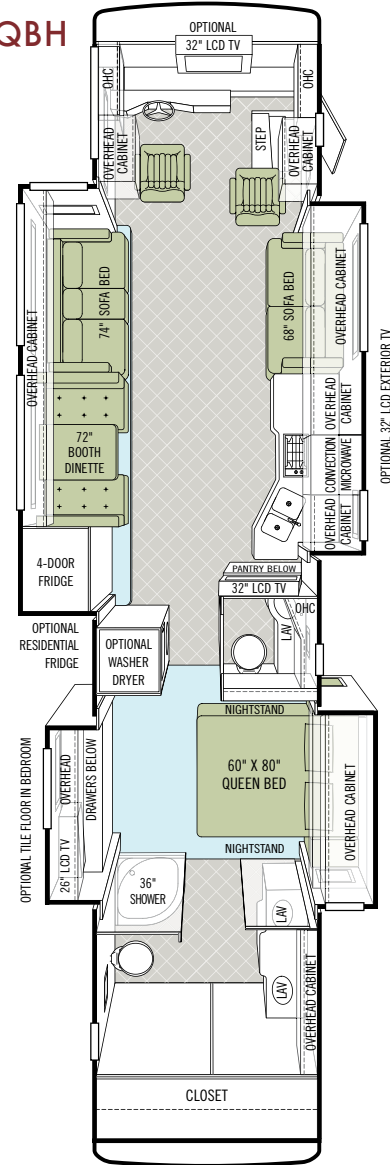
36 QSH



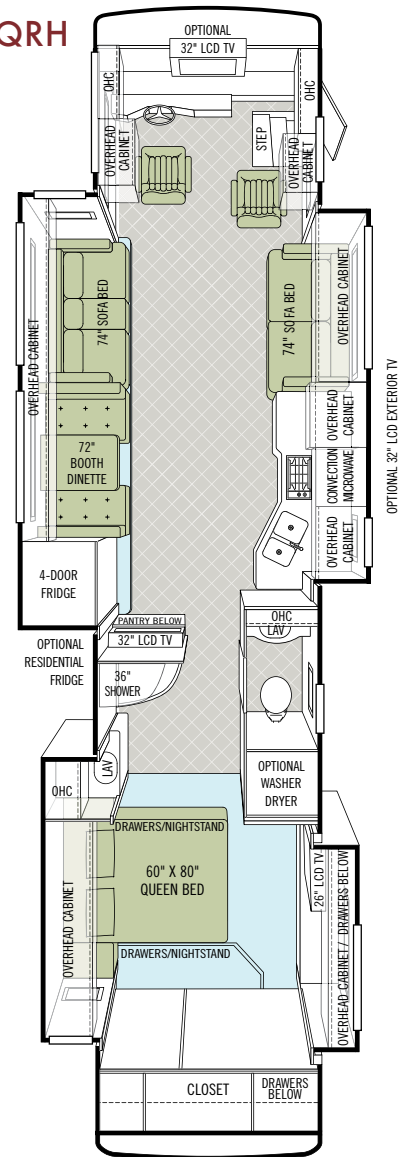
40 QTH



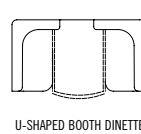
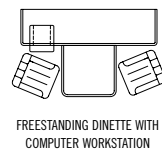
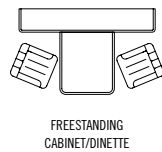
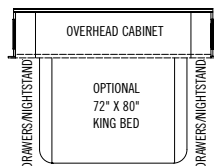
42 QBH



42 QRH



OPTION KEY



WHEREVER YOU GO, WE GO.

These days, that simple promise carries more weight than ever. In a time when some companies have struggled, a manufacturer who stands behind the product they build has never been more important. We've never been prouder of the strength of our company, our warranty and service plan (still the best in the motor home industry), and most importantly, the trust we've built with a very special group of motor home owners. We understand the richness that travel brings to your life, and our family is so proud of the relationship we have with yours. You are the reason we do what we do and why we never stop working to build a better Tiffin experience for you.

WARRANTIES THAT GO WHEREVER YOU GO.

10-YEAR LIMITED UNITIZED CONSTRUCTION WARRANTY - The structural integrity of the entire coach is guaranteed for the next 10 years. Warranty includes wall separation and inner frame weakness.

5-YEAR LIMITED LAMINATION WARRANTY - We guarantee against all exterior fiberglass delamination or wall separation.



Start your journey by visiting our website. We'd love to hear from you, so give us a call, send us a postcard or stop by our office the next time you pass by Red Bay. Because remember, wherever you go, we go.

Sincerely, 



TIFFIN MOTORHOMES

WHEREVER YOU GO, WE GO.

105 2nd Street NW, Red Bay, AL 35582

call 256.356.8661 fax 256.356.8219 or visit tiffinmotorhomes.com

FOR PARTS AND SERVICE CALL 256.356.0261

The following names are registered trademarks of Tiffin Motorhomes: Open Road®, Phaeton®, Allegro®, Allegro RED®,

Allegro Bay®, Allegro Bus®, Zephyr®, Roughing It Smoothly®, and Pusher®.

DEALER

Colton RV
North Tonawanda, NY 14120
(716) 694-0188
(800) 628-4889
www.ColtonRV.com

Colton RV
Orchard Park, NY 14127
(716) 957-3250
(800) 628-4889
www.Coltonrv.com