

SPRINTER
Keystone RV
Company



SPRINTER



Keystone RV
Company

WWW.KEYSTONE-SPRINTER.COM | WWW.KEYSTONERV.COM | TRAVEL TRAILERS

SPRINTER

DECOR

- A. BLACKSTONE
- B. SANDLEWOOD
- C. SEASCAPE

MAKE CAMPING EASY

Sprinter was Introduced in 1996 as Keystone's first product line. Sprinter's goals remain simple; take the suggestions from our customers and make them the foundation for the Sprinter design. As a result of these efforts, Sprinter offers you its proudest distinction between other brands - a product designed specifically to "MAKE CAMPING EASY." Let us show you how Sprinter offers a new level of affordable luxury.



ALL NEW
kitchen sink & pull
out sprayer faucet



SCAN TO VIEW A 360°
INTERIOR VIRTUAL TOUR



Get the free mobile app
at <http://gettag.mobi>
and scan this Tag.



311BHS IN SANDLEWOOD DECOR



STORAGE STORAGE STORAGE

That's what you asked for. Your wish has come true. From our oversized pots and pans drawer to our overhead storage and residential style pantry, we have a place for everything!



You won't believe how comfortable the Sprinter Memory Foam Sleeper Sofa is. The bi-fold design makes it quick and easy to set up when extra guests arrive. The spacious storage drawer provides an excellent place for linens and pillows.



With plenty of storage, pleated privacy shades, electrical outlets on both sides of the bed and a comfortable mattress, you will be energized for that full day ahead.





GOT HEAVY ITEMS?

With our full extension steel drawer guides we can handle it!

Remember we said we give you a place to store everything? Well, you can even store all of your kitchen tools out of sight with our oversized pots and pans drawer.

NEED ROOM FOR THE KIDS?

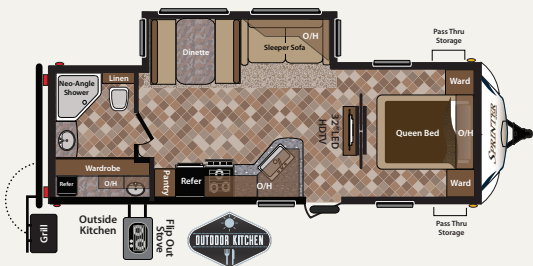
Everyone has their own space with our spacious bunk room with plenty of built in storage.



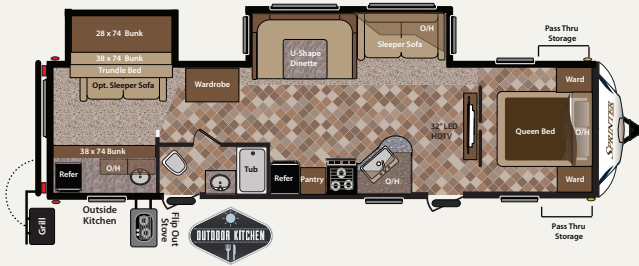
OUTDOOR KITCHEN

At Sprinter, we believe that beautiful days should be enjoyed outside with friends and family. With a fully equipped outdoor kitchen on models 266, 311, 316 and 328, you can now prepare that family meal while enjoying the company of others outside. Using the 110 volt outlet and cable plug, you won't miss a second of the big game!

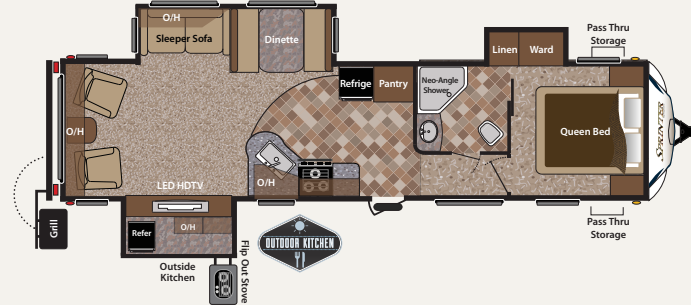
266RBS



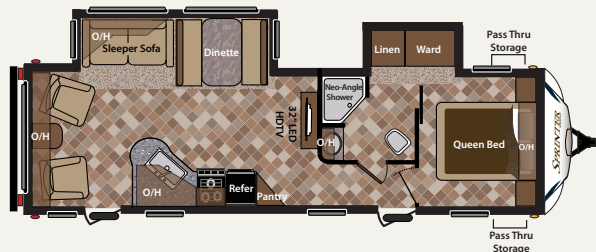
360° 311BHS



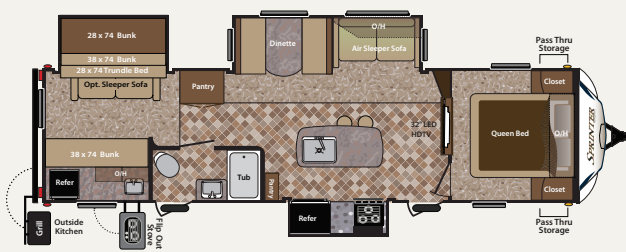
328RLS



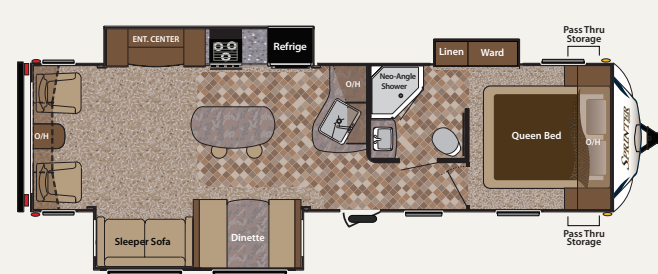
277RLS



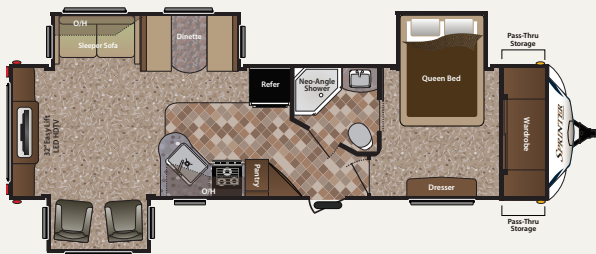
316BIK



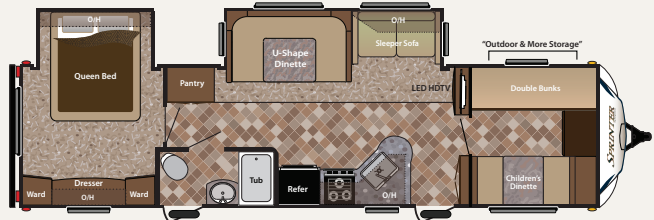
331RLS



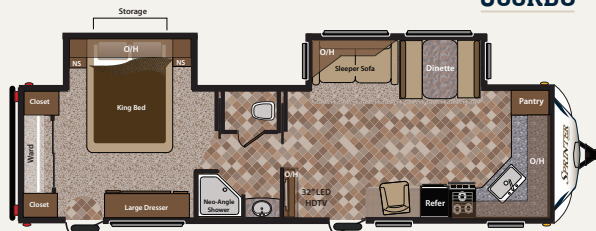
299RET



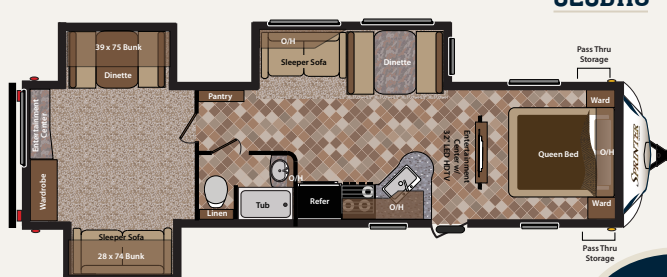
320BHS



300KBS



323BHS



SPRINTER

Sprinter offers you its proudest distinction between other brands. A product designed to enhance your experience and...

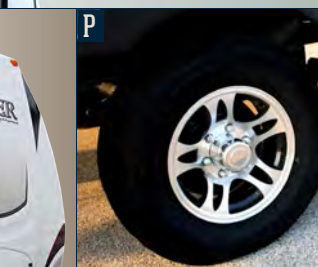
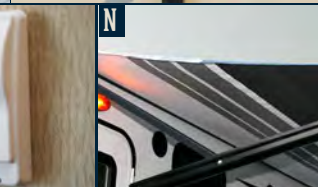
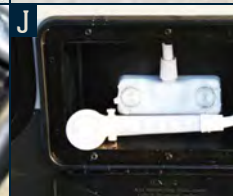
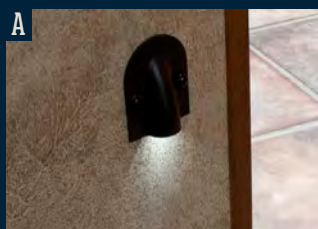
MAKE CAMPING EASY

FLOORPLANS



FEATURES

- A. LED FLOOR LIGHTING
- B. EXTERIOR BACK UP LIGHT
- C. EASY STORE PICNIC TABLE
- D. ENTRY STEPS WITH LIGHT
- E. FULLY ENCLOSED UNDERBELLY
- F. BATTERY DISCONNECT
- G. EXTRA LARGE GRAB HANDLE
- H. DIGITAL THERMOSTAT
- I. EXTERIOR TOY LOCK
- J. OUTSIDE SHOWER
- K. POWER TONGUE JACK
- L. BLACK TANK FLUSH
- M. COMMAND CENTER
- N. ELECTRIC AWNING
- O. SLEEK FRONT CAP
- P. ALUMINUM WHEELS



MODEL	266RBS	277RLS	299RET	300KBS	311BHS	316BIK	320BHS	323BHS	328RLS	331RLS
SHIPPING WEIGHT	6564	7181	8455	7880	8294	8670	8155	8655	8865	8211
CARRYING CAPACITY	2921	2344	2600	3270	2751	2465	2920	2400	2230	2874
HITCH WEIGHT	685	725	895	990	835	975	915	895	935	925
EXTERIOR LENGTH*	29' 5"	31' 11"	35' 11"	34' 5"	35' 4"	35' 8"	36' 2"	36' 9"	36' 8"	34' 10"
EXTERIOR HEIGHT	11'	11'	11' 3"	11' 3"	11' 3"	11' 3"	11' 3"	11' 3"	11' 3"	11' 3"
FRESH WATER	47	47	45	47	47	45	45	47	47	47
WASTE WATER	32	32	32	32	32	32	32	32	32	32
GRAY WATER	64	64	64	64	64	64	64	64	64	64
LPG CAPACITY LB.	60	60	60	60	60	60	60	60	60	60

DISCLAIMER: Product information is as accurate as possible as of the date of publication of this brochure. All features, floor plans, and specifications in this brochure are subject to change without notice. Please also consult Keystone's web site at www.keystonerv.com for more current product information and specifications. Tow Vehicle Disclaimer. CAUTION: Owners of Keystone recreational vehicles are solely responsible for the selection and proper use of tow vehicles. All customers should consult with a motor vehicle manufacturer or their dealer concerning the purchase and use of suitable tow vehicles for Keystone products. Keystone disclaims any liability or damages suffered as a result of the selection, operation, use or misuse of a tow vehicle. KEYSTONE'S LIMITED WARRANTY DOES NOT COVER DAMAGE TO THE RECREATIONAL VEHICLE OR THE TOW VEHICLE AS A RESULT OF THE SELECTION, OPERATION, USE OR MISUSE OF THE TOW VEHICLE. *Length is defined as the distance from the center line of hitch pin/coupler to rear bumper of trailer. 09/12

WEIGHTS & MEASUREMENTS

STANDARDS & OPTIONS

EXTERIOR FEATURES

- Laminated aluminum framed sidewalls
- Enclosed underbelly with direct vent heat
- E-Z Lube axles
- Next Generation Fiberglass Front Cap
- Tinted safety glass windows
- LP Bottles night light
- Power Tongue Jack
- One touch electric awning
- Friction Hinge Entry Door
- Extra large lockable, radius baggage doors
- Rear bumper storage
- 9" easy opening triple entry step
- Entry step light
- Hitch light
- Exterior clearance lights
- Battery disconnect system
- Extra large Folding Grab Handle
- Tough guard painted skirt metal
- Extra long rain gutters and spouts
- Two 30 LBS LP bottles with automatic change-over
- Roto-cast seamless holding tanks
- Black tank flush system
- Outside shower
- Keystone Original space maker 47 gallon fresh water system.
- 30' 30 Amp power cord
- Cable and satellite hook-up
- Easy access manual override for the slide rooms
- Aluminum wheels
- Radial Tires
- Spare tire
- Outside speakers
- Patio light
- Light at the termination points
- Picnic Table in pass through
- Back-up light
- Toylok Security System
- Upgraded two burner cook-top (Outside Kitchen models only)
- Bumper mounted grill w/LP gas connection (Outside Kitchen models only)
- 12V Power plug (Outside Kitchen models only)

INTERIOR FEATURES

- 80" Interior Height
- 12 Volt, 55 amp converter
- 35,000 BTU auto-ignition furnace
- 13,500 BTU ducted air conditioner with "Quick Cool"
- Windows in both Slide-room end walls
- Water heater bypass for easy winterization
- Digital Thermostat
- Residential cabinet hardware
- Large picture window at the dinette
- 12 volt slide room lights for dry camping
- Overhead slide room cabinets
- Home Theater Surround Sound system
- In floor ducted heat
- LED floor lighting
- Easy Find light switches
- Central monitoring system for all tanks and battery
- Command Center for awning, slide-outs, lights, etc.
- Full extension ball bearing drawer guides
- Screwed cabinetry with lumber-core stiles
- Beauflor Linoleum

LIVING ROOM FEATURES

- Cable TV hook-up with antenna and signal booster
- Satellite prep with RG-6 cable
- High grade carpeting
- Residential fabric-covered valances w/removable drapes
- Angled overhead storage in the slide room
- Home theater DVD/CD/AM/FM/MP3 hookup
- Memory foam sofa w/ storage drawer
- 32" HD LED Television (24" in 25SRKS)

BATH FEATURES

- Large vanity sink
- Porcelain foot flush toilet
- Residential medicine cabinet with mirror
- ABS one piece tub surround
- Neo angle glass shower
- Skylight over tub

- Reinforced tub support
- Power roof vent fan
- GFI receipts in the bathroom

KITCHEN FEATURES

- 6 gallon gas/electric DSI auto ignition water heater w/ 16.2 gph recovery
- 3 burner high output gas range
- Large single bowl sink with cover
- Full extension ball bearing metal drawer guides
- Metal pull-out sprayer faucet
- Waste basket storage
- Lighted range hood with exhaust fan
- Microwave with carousel
- 17" oven
- Reversible dinette seat cushions
- Double door refrigerator
- Raised panel cabinet doors
- Overhead cabinets above the sink
- Oversized pots and pan drawers

BEDROOM FEATURES

- Cable TV hook-up
- High grade carpet in master bedroom
- Under bed storage w/ gas struts
- Color matched bedspread
- Bedroom reading lights
- Dream Collection Mattress
- King bed (Bedroom slide models)
- Electrical outlets near the bed
- Roof vent

SAFETY FEATURES

- Dual hitch safety chains
- Safety glass windows

- Fire extinguisher
- Smoke detector
- Carbon monoxide detector
- Egress windows
- LP gas leak detector
- Break away safety brake
- 4 wheel electric brakes
- Security light

CAMPING MADE EASY PACKAGE

- Frame side manual override for the slide rooms
- Exterior speakers
- Electric awning
- Friction hinge entry door
- Toylok Security System
- Picnic Table in pass thru storage
- E-Z Lube axles
- Battery disconnect
- Back-up light
- Black tank flush
- Outside shower
- Dream Collection Mattress
- Easy Find light switches
- LED floor lights
- Bumper mount grill w/LP hook-up (Outside Kitchen models only)

POPULAR OPTIONS

- Upgraded 15,000 BTU air conditioner
- Free standing dinette with four chairs
- 68" memory foam sofa in place of lower bunk and trundle (311BHS)
- 50 AMP electrical service plug; wire and brace for 2nd A/Cc(excludes 266 and 277 models)



SPRINTER
WWW.KEystone-SPRINTER.COM



WWW.KEYSTONERV.COM

574.535.2100 • 2642 HACKBERRY DRIVE
P.O. BOX 2000 • GOSHEN, IN 46527



Go RVing.



Colton RV & Marine
122 Niagara Falls Blvd
North Tonawanda, NY 14120
(716) 694-0188
www.ColtonRV.com

Colton RV & Marine
3443 Southwestern Blvd.
Orchard Park, NY 14127
(716) 957-3250
www.Coltonrv.com