

ASPEN TRAIL

UNIQUE FLOORPLANS WITH DISTINCT FEATURES

ASPEN TRAIL



Aspen Trail
Model 2760BHS



WHERE HIGH-END LOOKS AND FEATURES
MEET AFFORDABILITY.





Aspen Trail 2730RBS, shown in Sienna

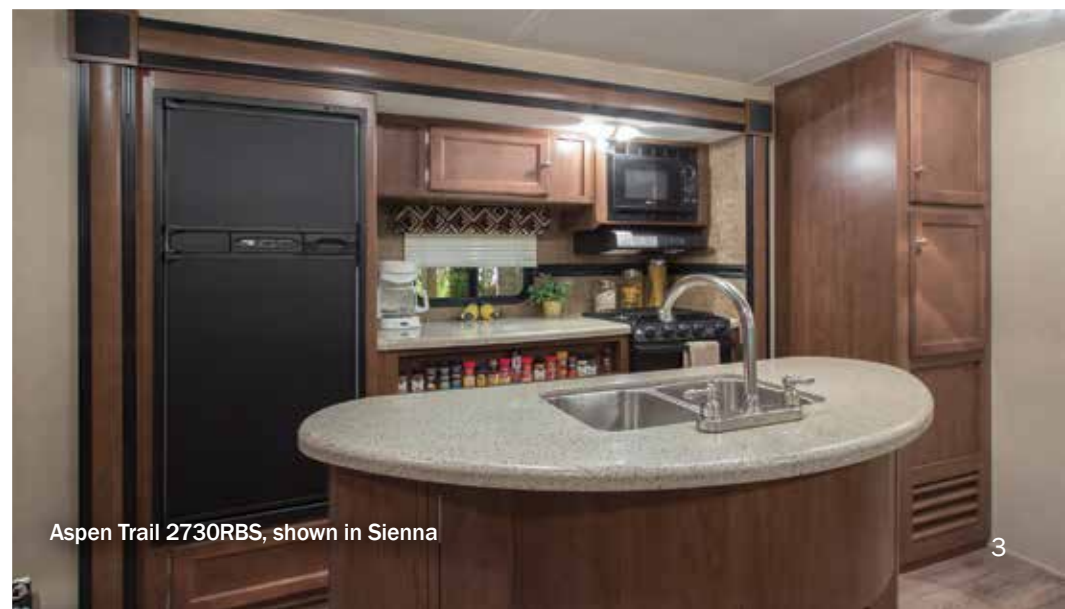
Aspen Trail's residential-styled furniture and 2-toned walls add a sense of comfort and warmth.

You'll appreciate the optional high-end residential solid surface countertops and 60" x 80" queen-sized bed.

Mega-slides are over a foot wider and offer a six-foot ceiling height.



Aspen Trail 2730RBS, Bedroom



Aspen Trail 2730RBS, shown in Sienna

Kitchens are versatile, offering tons of storage, larger cabinets, multiple drawers and generous counter space. All main living areas include an overhead skylight. Taller ceilings allow for taller kitchen cabinets, larger windows and taller sliderooms.

Our spacious slides include an oversized convertible dinette and/or sofa.



Aspen Trail 2810BHS, shown in Sienna



Aspen Trail 2810BHS, Fold Down Sofa



Aspen Trail 2810BHS,
Bathroom



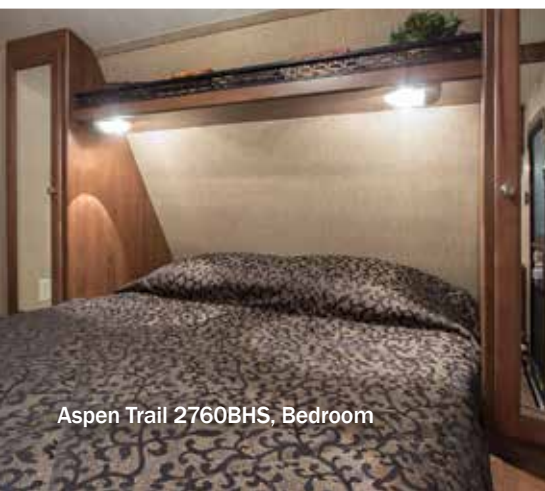
Aspen Trail 2810BHS,
Entertainment Center



Aspen Trail 2760BHS, shown in French Roast



Aspen Trail 2760BHS, Fold Down Sofa



Aspen Trail 2760BHS, Bedroom



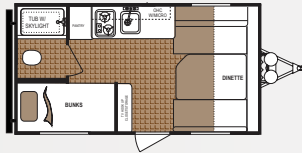
Aspen Trail 2760BHS, Bunks



Aspen Trail 2760BHS, shown in French Roast

All Aspen Trails include distressed maple hardwood panel drawer fronts and cabinet doors, heavy-duty drawer guides, large sink and appliances, interior designer treatments and Beauflor® wood plank flooring. See your local dealer today; there's sure to be an Aspen Trail that's just right for your family!

ASPEN TRAIL MINI'S



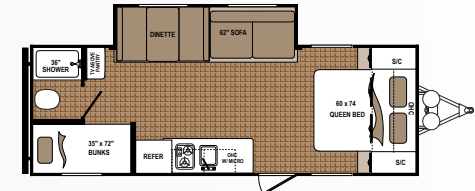
1500BH

Avg Ship Wt2,975 Length18' 9"
Hitch Weight.....357 Fresh Water Capacity ..*27
Cargo Capacity825 Black Water Capacity ...28
Height9' 11" Grey Water Capacity...28



1600RB

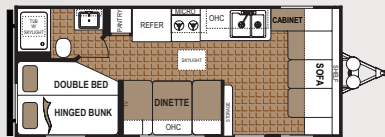
Avg Ship Wt3,142 Length21' 5"
Hitch Weight.....346 Fresh Water Capacity ..*27
Cargo Capacity658 Black Water Capacity ...28
Height9' 9" Grey Water Capacity...28



2470BHS

Avg Ship Wt4,638 Length27' 6"
Hitch Weight.....603 Fresh Water Capacity *26.5
Cargo Capacity2,962 Black Water Capacity ...28
Height10' 1" Grey Water Capacity...28

ASPEN TRAIL TRAVEL TRAILERS



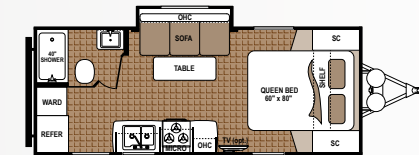
1700DB

Avg Ship Wt4,294 Length23' 10"
Hitch Weight.....472 Fresh Water Capacity ..*52
Cargo Capacity3,306 Black Water Capacity ...42
Height10' 7" Grey Water Capacity...42



1900RB

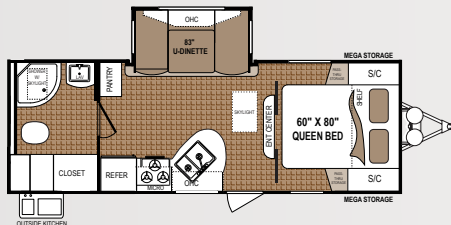
Avg Ship Wt4,284 Length24' 9"
Hitch Weight.....514 Fresh Water Capacity ..*52
Cargo Capacity3,316 Black Water Capacity ...42
Height10' 8" Grey Water Capacity...42



2060RBS

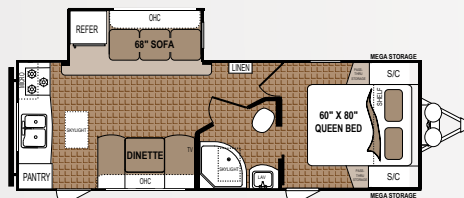
Avg Ship Wt4,632 Length24' 1"
Hitch Weight.....466 Fresh Water Capacity ..*52
Cargo Capacity2,968 Black Water Capacity ...42
Height10' 6" Grey Water Capacity...42

NEW!



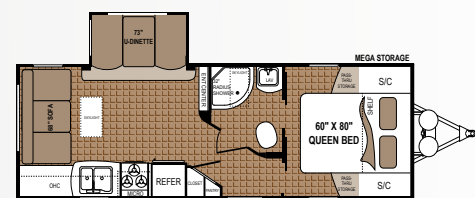
2110RBS

Avg Ship Wt5,591 Length26' 6"
Hitch Weight.....559 Fresh Water Capacity ..*52
Cargo Capacity2,009 Black Water Capacity ...42
Height11' 1" Grey Water Capacity...42



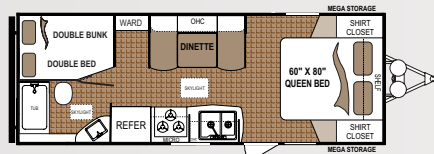
2390RKS

Avg Ship Wt5,888 Length27' 2"
Hitch Weight.....824 Fresh Water Capacity ..*52
Cargo Capacity1,712 Black Water Capacity ...42
Height11' 4" Grey Water Capacity...42



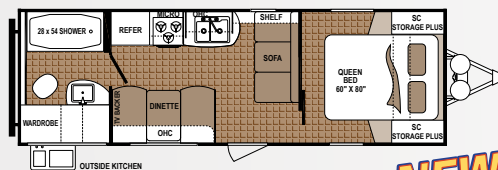
2460RLS

Avg Ship Wt5,736 Length27' 9"
Hitch Weight.....574 Fresh Water Capacity ..*52
Cargo Capacity1,864 Black Water Capacity ...42
Height11' 2" Grey Water Capacity...42



2500BH

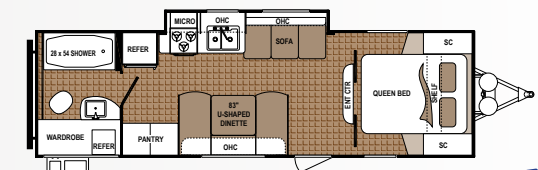
Avg Ship Wt4,357 Length25' 7"
Hitch Weight.....566 Fresh Water Capacity ..*52
Cargo Capacity3,243 Black Water Capacity ...42
Height11' 1" Grey Water Capacity...42



2510RB

Avg Ship Wt4,884 Length28' 8"
Hitch Weight.....635 Fresh Water Capacity ..*52
Cargo Capacity2,716 Black Water Capacity ...42
Height10' 8" Grey Water Capacity...42

NEW!

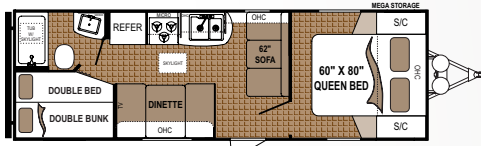


2650RBS

Avg Ship Wt6,053 Length30' 7"
Hitch Weight.....674 Fresh Water Capacity ..*52
Cargo Capacity1,547 Black Water Capacity ...42
Height10' 9" Grey Water Capacity...42

NEW!

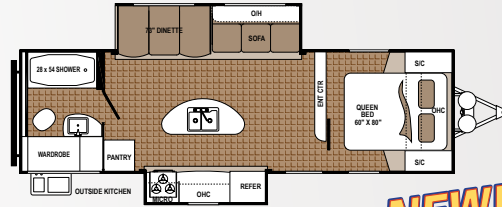
ASPEN TRAIL TRAVEL TRAILERS



2710BH

Avg Ship Wt4,837
Hitch Weight......581
Cargo Capacity2,763
Height10' 7"

Length28' 7"
Fresh Water Capacity ..*52
Black Water Capacity...42
Grey Water Capacity...42

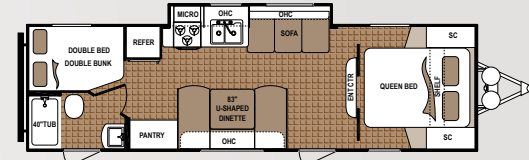


2730RBS

Avg Ship Wt7,262
Hitch Weight......860
Cargo Capacity2,418
Height11' 6"

Length31'
Fresh Water Capacity ..*52
Black Water Capacity...42
Grey Water Capacity...78

NEW!

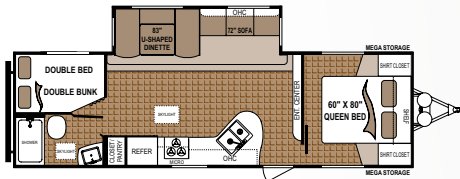


2760BHS

Avg Ship Wt5,999
Hitch Weight......660
Cargo Capacity1,601
Height10' 7"

Length31' 4"
Fresh Water Capacity ..*52
Black Water Capacity...42
Grey Water Capacity...42

NEW!



2810BHS

Avg Ship Wt6,726
Hitch Weight......875
Cargo Capacity2,874
Height11' 4"

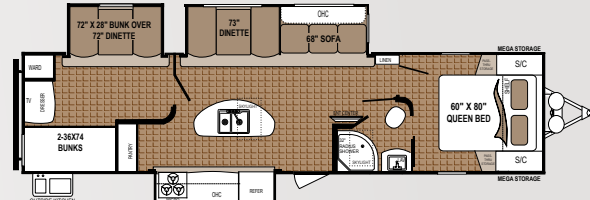
Length32' 4"
Fresh Water Capacity ..*52
Black Water Capacity...42
Grey Water Capacity...42



3010BHS

Avg Ship Wt8,191
Hitch Weight......983
Cargo Capacity1,489
Height11' 7"

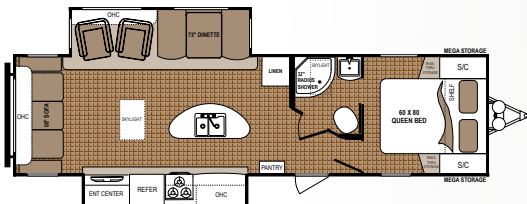
Length35' 9"
Fresh Water Capacity ..*52
Black Water Capacity...42
Grey Water Capacity...42



3100BHS

Avg Ship Wt8,686
Hitch Weight.....1,042
Cargo Capacity2,490
Height11' 8"

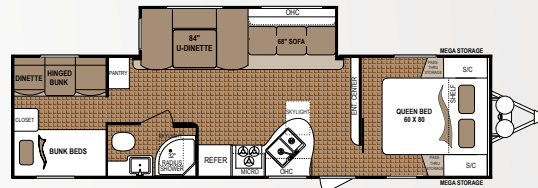
Length36' 11"
Fresh Water Capacity ..*52
Black Water Capacity...42
Grey Water Capacity...78



3117RLDS

Avg Ship Wt7,853
Hitch Weight.....1,021
Cargo Capacity1,827
Height11' 4"

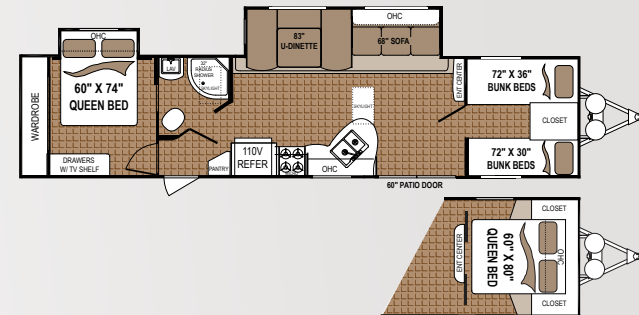
Length34' 7"
Fresh Water Capacity ..*52
Black Water Capacity...42
Grey Water Capacity...42



3130QBS

Avg Ship Wt6,909
Hitch Weight......829
Cargo Capacity2,771
Height11' 6"

Length34'
Fresh Water Capacity ..*52
Black Water Capacity...42
Grey Water Capacity...42



3600QBDS

Avg Ship Wt8,398
Hitch Weight.....1,092
Cargo Capacity2,778
Height11' 5"

Length39' 3"
Fresh Water Capacity ..*52
Black Water Capacity...42
Grey Water Capacity...78

*Fresh water capacity includes water heater

Disclaimer: Features, floorplans and specifications are subject to change without notice. Our weights represent how most units are built, inclusive of many commonly-ordered options.

UNIQUE FLOORPLANS WITH DISTINCT FEATURES

ASPEN TRAIL

Aspen Trail Upgrade Package

Aerodynamic Front Profile
Front Diamond Plate Rock Guard
Furrion Stereo w/CD/DVD/AUX Connection w/Speakers
Central Command Center
Full-Extension Ball Bearing Drawer Guides
Distressed Maple Cabinet Doors
Laundry Chute (where applicable)
Everdream 60" x 80" Deluxe Mattress
Beauflor® Wood Plank Flooring
"Mega Storage" Pass-Thru Storage Compartment
82" Interior Ceiling Height
"Super Slide" Slide Room w/72" Height

INTERIOR FEATURES

Kitchen

Residential Microwave Oven w/Carousel
Auto-Ignition 3-Burner Range w/Oven
Large 6.3 CU FT Double-Door
Gas/Electric Refrigerator
Extra Large, Double-Bowl Sink
w/High-Rise Faucet
Power Range Hood w/12V Light & Exhaust Fan

Living Area

Premium Residential Furniture
Large Radius Corner Slideout Overhead Cabinets
Premium Slideout Fascia
12V Dinette Lights
Designer Window Treatments
w/Mini Blinds Throughout
Swivel Chairs (see floorplans)
Fold-Down Sofa (see floorplans)
83" U-Shaped Convertible Dinette
(see floorplans)
Wall Switches for Overhead Lights

Bedroom

TV Hookups (see floorplans)
Lift-Up Bed Storage (see floorplans)
Designer Bedding Package w/Bedsread
Reading Lights
Privacy Curtain for Bunks
Sliding Bedroom Doors

Bathroom

ABS Tub & Shower Surround
Shower/Exhaust Fan
Glass Shower Door (see floorplans)
Designer Mirror
110V GFI Outlet
Towel Hooks
Porcelain Foot-Flush Toilet

"Store More" Cabinetry

Radius-Corner Full-Access Cabinet
Distressed Maple Hardwood Panel Drawer Fronts
& Cabinet Doors
Deep Slide Room Cabinets

Appliances and Safety Equipment

6 GAL Gas/Electric DSI Water Heater
Water Heater Bypass
34,000 BTU Furnace
(most models, see floorplans)
13,500 BTU Roof Ducted A/C
(most models, see floorplans)
Premium 12V Water Pump
55 AMP Electronic Converter
Digital TV Antenna w/Booster
Wired for Cable
Monitor Panel
Smoke, Carbon Monoxide & LP Leak Detectors

CONSTRUCTION

Chassis

Heavy Duty Steel I-Beam Frame
Dual Battery Tray
2 5/16" Coupler
Breakaway Trailer Switch
Heavy-Duty Safety Chains
Rear Stabilizer Jacks
EZ Lube® Axles
Steel Rims
Folding Entry Steps
Rear Bumper
46 GAL Freshwater Tank

Floor

16" On-Center Studs
5/8" Tongue & Groove Floor Decking

Roof

Walk-On Roof w/R-7 Fiberglass Insulation
Seamless TPO Roof w/12-Year MFG Warranty
3/8" Roof Decking
Roof-Ducted Air Conditioning
(most models, see floorplans)
Extended Rain Gutters

Walls

Manual Awning w/Adjustable Legs
Detachable 30 AMP Power Cord
Hurricane Straps (integrate walls to roof & floor)
Heavy-Duty .024" Mesa Sidewall Metal
R-7 Fiberglass Insulation
Key-Locking, Radius-Corner Exterior
"Mega Storage" Compartments
Pebble Finish Entry Door
Patio Light
Tinted Safety Glass Windows
Large Dinette Picture Window
120V Exterior Outlet

Acu-Weight Certification

Real Weights (all units weighed before leaving factory)
Weights Include Options
(see Acu-Weight decal on unit)

MANDATORY OPTIONS

Heated & Enclosed Underbelly
Radial Tires
Front Stabilizer Jacks
Spare Tire/Cover/Carrier
(2) 30 LB LP Bottles w/Cover
Exterior Spray Port
6 GAL DSI Gas/Electric Water Heater
Black Tank Flush
Kitchen Sink Covers

OPTIONS

Aztec Grey Fiberglass
Power Awning
Power Tongue Jack
Power Front & Rear Stabilizer Jacks
Aluminum Rims
15,000 BTU A/C Upgrade
Front Queen Bed IPO Bunks (3600BDS only)
Tri-Fold Hide-a-Bed
Fireplace (3117RLDS only)
50 AMP 2nd A/C Prep (on select models)

Product information is as accurate as possible as of the date of publication of this brochure. Features, floorplans and specifications are subject to change without notice. Please also consult our website for more current product information and specifications.

Tow Vehicle Disclaimer CAUTION: Owners of Dutchmen Manufacturing, Inc., recreational vehicles are solely responsible for the selection and proper use of tow vehicles. All customers should consult with a motor vehicle manufacturer or their dealer concerning the purchase and use of suitable tow vehicles for Dutchmen products. Dutchmen disclaims any liability or damages suffered as a result of the selection, operation, use or misuse of a tow vehicle. Dutchmen's limited warranty does not cover damage to the recreational vehicle or the tow vehicle as a result of the selection, operation, use or misuse of the tow vehicle.

DECOR CHOICES



FRENCH ROAST



ENTOURAGE



SIENNA



Check us
out on
Facebook!



Scan our quick response
code to open our website,
and explore the many
products we have to offer!

www.Dutchmen.com

Colton RV **Your Local Dealer**
North Tonawanda, NY 14120
(716) 694-0188
(800) 628-4889
www.ColtonRV.com



REV 5.14 ©Thor Industries, Inc.