

Colton RV & Marine
3122 Niagara Falls Blvd
North Tonawanda, NY 14120
(716) 694-0188
www.ColtonRV.com

Colton RV & Marine
3443 Southwestern Blvd.
Orchard Park, NY 14127
(716) 957-3250
www.Coltonrv.com



TIFFIN MOTORHOMES

WHEREVER YOU GO, WE GO.



ALLEGRO

CHAMPAGNE EXTERIOR
FULL BODY



SO MANY SUNSETS, SO LITTLE TIME.

Every journey begins with a single step. For the Tiffin family, their journey began back in 1972 when Bob Tiffin built the first Allegro. Since then, every Tiffin Motorhome has been crafted using these original high standards for design and construction. The Allegro can be the first step in your very own journey, too. Equipped with the knowledge that your motorhome is backed by one of the industry's best warranties, you may just find yourself wandering about aimlessly.

Allegro





THE GREAT INDOORS. LIVING AREA



This is what a home on the road should be. Starting with a standard full tile floor, standard name brand TV, high-quality kitchen appliances, such as a three-burner cook top with oven and satin nickel kitchen sink faucet, the Allegro's abundant living space is the epitome of comfort. Other optional features include a free-standing dinette table. As always, the cabinetry is hand-crafted by the Tiffins, providing the kind of quality you would expect from the finest craftsmen.





MATISSE INTERIOR
MEDIUM ALDERWOOD CABINETS



THE ABSOLUTE CONTROL ROOM. COCKPIT/EXTERIOR

When you're sitting behind the wheel in the Allegro's cockpit, gazing through the standard one-piece windshield, you'll understand why some owners spend more time on the road than at home. For comfort's sake, the instrument panels have been spaciouly designed and both the driver and passenger seats swivel around to face the living area. Step outside, and you'll find an exterior just as thoughtfully detailed. The Allegro offers your choice of two partial body paints or new for this year, three full body paints. You'll also find retractable awnings, and a new oval porch light. Optional features include a Winegard® automatic satellite dish.







BELL HOP NOT INCLUDED.

BEDROOM

Life on the road doesn't have to feel like life on the road. The Allegro's bedroom features full carpeting, a spacious wardrobe, a comfortable bed with an innerspring mattress and a generous amount of storage underneath, bedside tables and custom cabinets with overhead reading lights in the slide ceiling. Owners also may enjoy an optional 20" color TV and bedroom day/night shades for added privacy.





MATISSE INTERIOR
MEDIUM ALDERWOOD CABINETS



A CLEAN GETAWAY. BATHROOM/AMENITIES

The more you travel, the more you appreciate the little luxuries within the Allegro. Starting with the privacy doors that comfortably separate it from the bedroom and living area, the Allegro's bathroom provides even more thoughtful touches than you expect. Standard design features include a fiberglass shower, a new lavatory faucet, and full tile flooring. And, in keeping with the Tiffin family's tradition of quality control, all fiberglass parts and custom cabinetry are manufactured in-house by skilled Tiffin craftsmen.

ALLEGRO



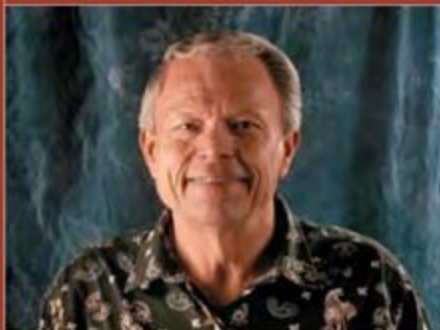
LET YOUR JOURNEY BEGIN

Where you go from here is entirely up to you. And when you go, you bring the best warranty and service plan in the motorhome industry along for the ride. For more than 30 years, we've been building quality products for a family of customers who share our love for travel by motorhome. The places they've seen and the experiences they've collected are immeasurable. We're proud to have been a part of their lives. They are the reason that every day, we do everything we can to strengthen the relationship we enjoy with our customers and the relationship they enjoy with the road.

WARRANTIES THAT GO WHEREVER YOU GO

10-YEAR UNITIZED CONSTRUCTION LIMITED WARRANTY The structural integrity of the entire coach is guaranteed for the next 10 years. Warranty includes wall separation and inner frame weakness.

5-YEAR "HYDRA-VAC" LAMINATION LIMITED WARRANTY We guarantee against all exterior fiberglass delamination or wall separation.



Start your journey by visiting our website. We'd love to hear from you, so give us a call, send us a post card or stop by our office the next time you pass by Red Bay. Because remember, wherever you go, we go.

Sincerely,

TIFFIN MOTORHOMES, INC.
105 2ND STREET NW RED BAY, AL 35582
CALL 256.356.8661 FAX 256.356.8219
www.tiffinmotorhomes.com

The following names are registered trademarks of Tiffin Motorhomes: Open Road®, Phaeton®, Allegro®, Allegro Bay®, Allegro Bus®, Zephyr®, Roughing It Smoothly®, and Pusher®.

DEALER:

ALLEGRO

2008

2008 SPECIFICATIONS

TIFFIN MOTORHOMES

Allegro

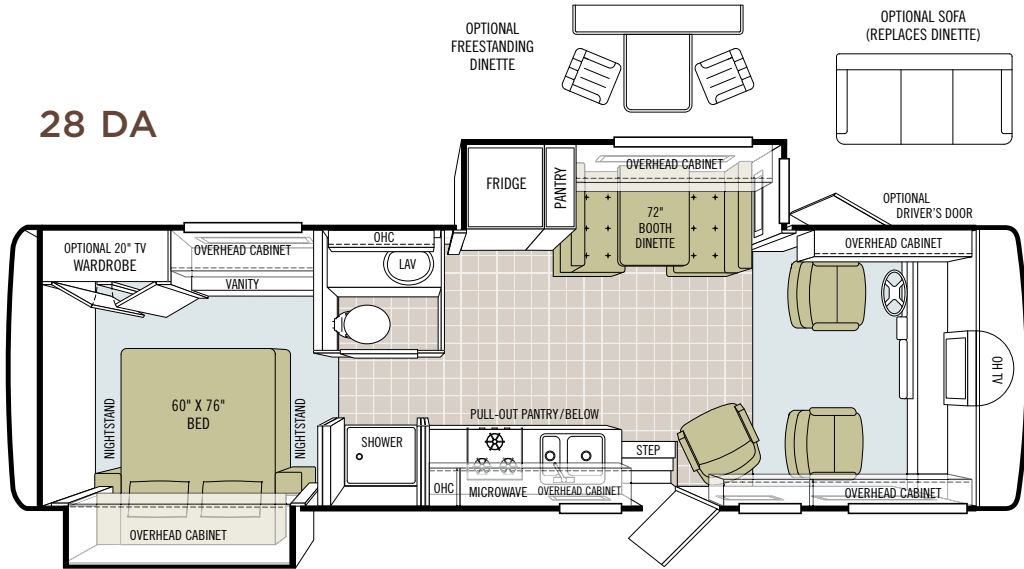


TIFFIN MOTORHOMES

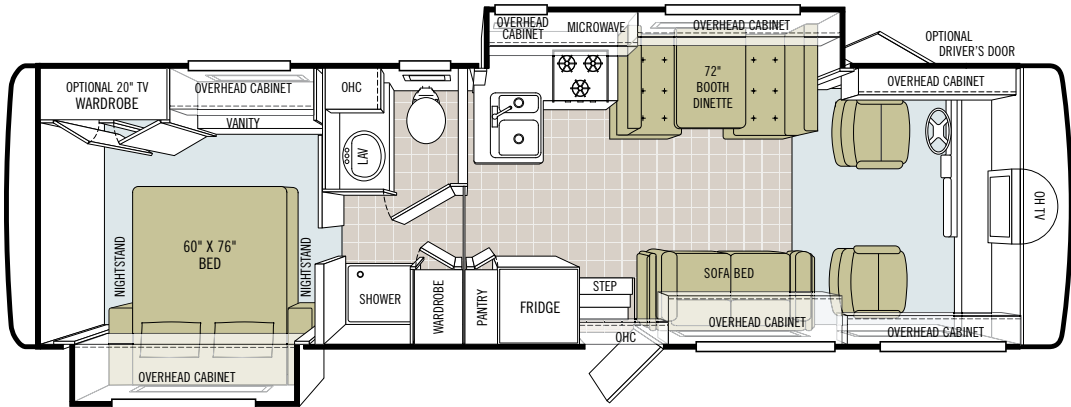
WHEREVER YOU GO, WE GO.

INTERIOR SPECS FLOOR PLANS

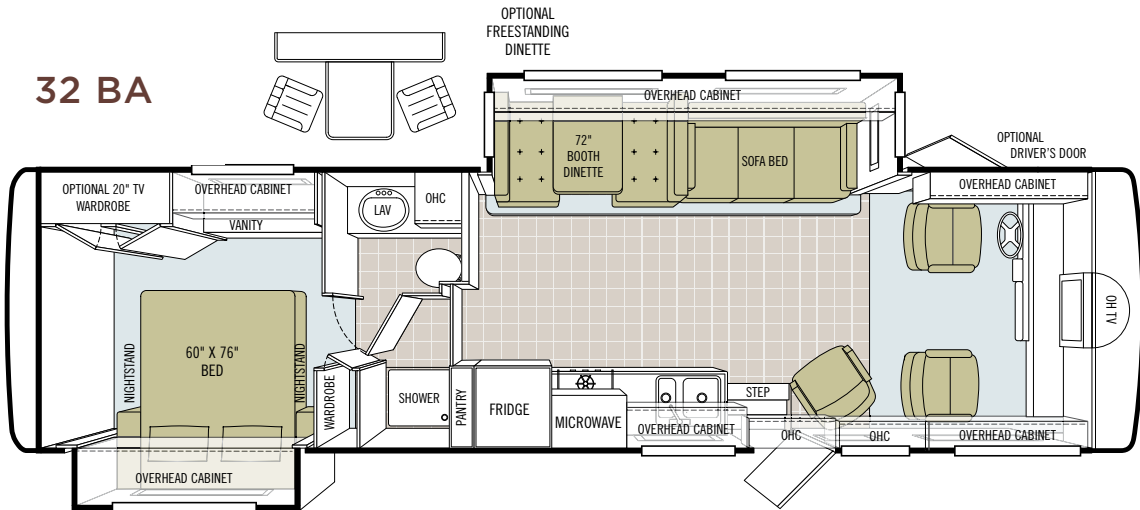
28 DA



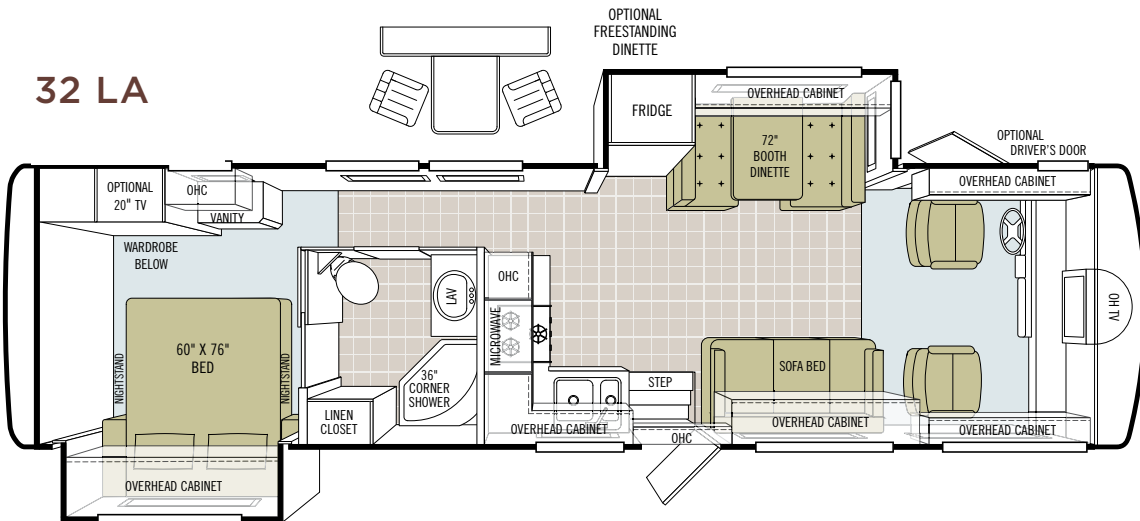
30 DA



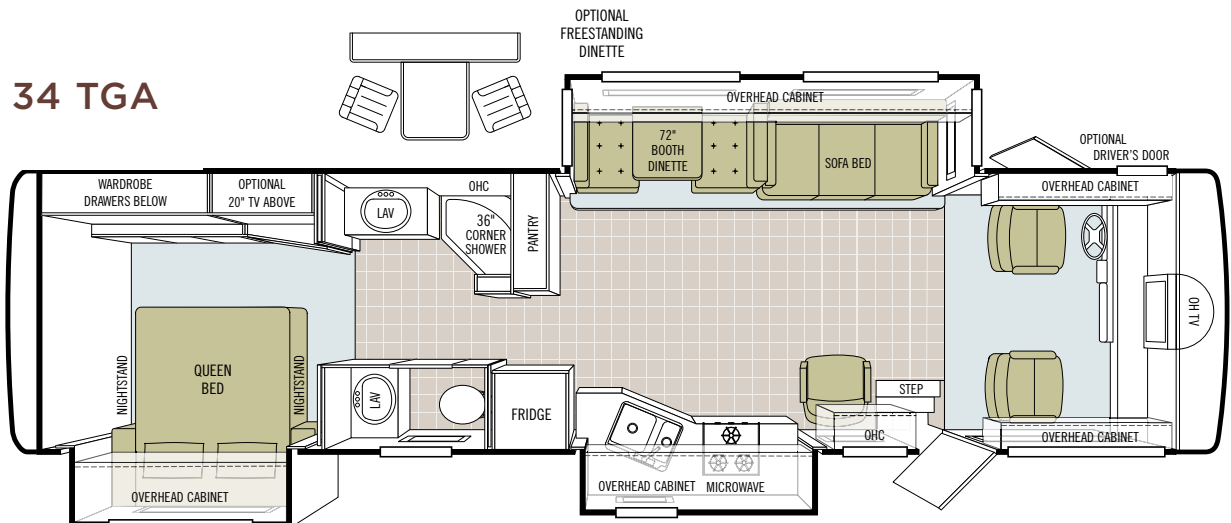
32 BA



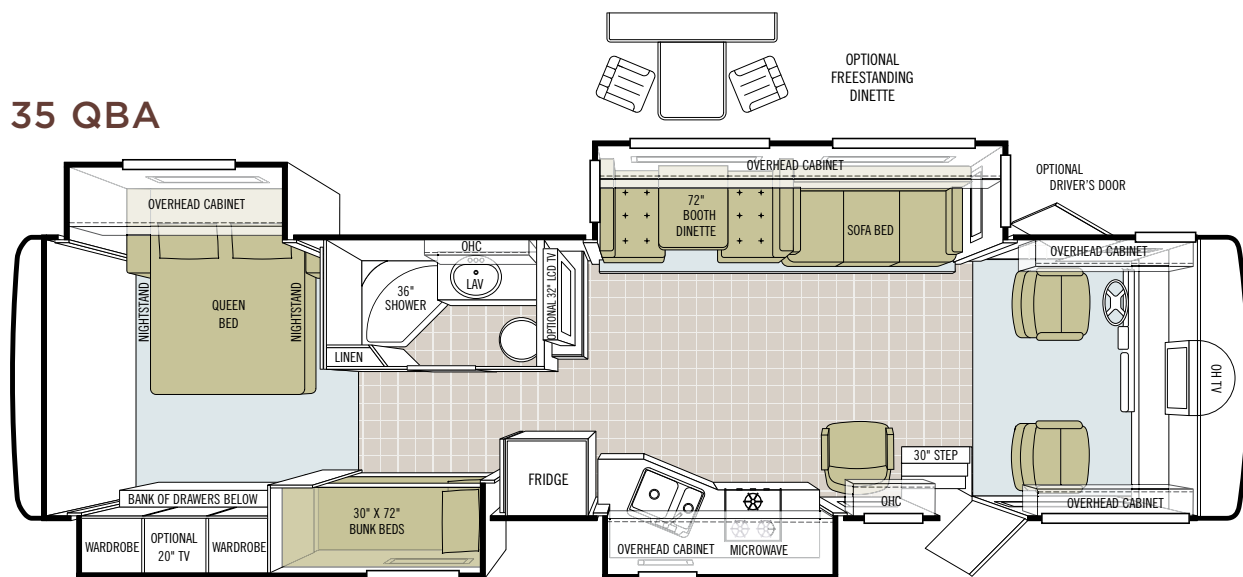
32 LA



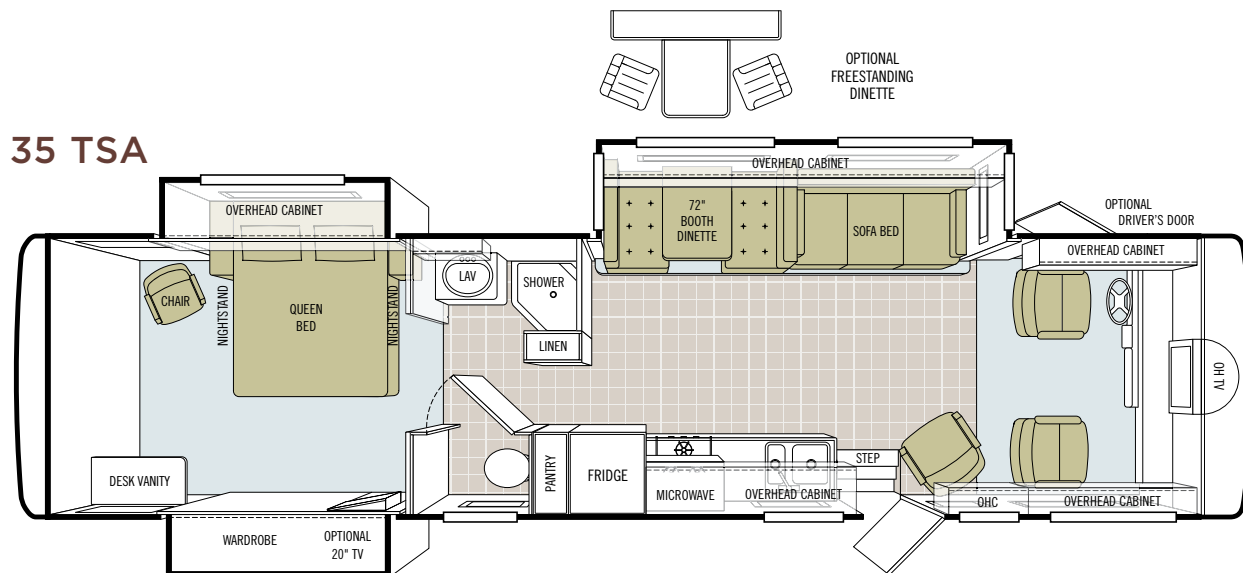
34 TGA



35 QBA



35 TSA



EXTERIOR SPECS
PAINT COLORS



BORDEAUX Partial Body



DRIFTWOOD Partial Body



CHAMPAGNE Full Body



SILVER SAND Full Body



SUNLIT SAND Full Body

INTERIOR SPECS
CABINETS & FABRICS

CABINET DOORS

All cabinet doors are made of solid wood.



Natural Maple



Cherry Bark



Medium Alderwood

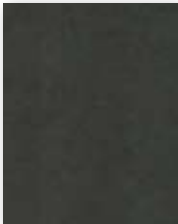


Carpet

MATISSE



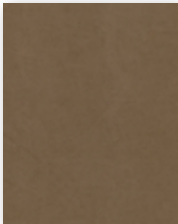
Bedroom



Bedroom Accent



Sofa/Chair



Living Area Accent



Dinette

MIRAGE



Bedroom



Bedroom Accent



Sofa/Chair



Living Area Accent



Dinette

SUNSET



Bedroom



Bedroom Accent



Sofa/Chair



Living Area Accent



Dinette

Our fabric designs and choices of wood grain are sure to suit every taste.
All cabinet finishes are available in combination with all fabric schemes.

TECHNICAL SPECS

AUTOMOTIVE

STANDARD EQUIPMENT ON ALL MODELS:

- TorqShift® 5-Speed Automatic Overdrive with Tow/Haul Mode (Ford)
- 1000 MH Series 6-Speed Automatic Allison Transmission with Overdrive (Workhorse)
- Leveling Jacks
- Cruise Control
- Emergency Start Switch

FORD CHASSIS	28 DA	30 DA	32 BA	32 LA	34 TGA	35 QBA	35 TSA
Engine - 362 HP	6.8 L V10	6.8 L V10	6.8 L V10	6.8 L V10	6.8 L V10	6.8 L V10	6.8 L V10
Torque (Lb.-Ft. Max. Net)	457 @ 3250	457 @ 3250	457 @ 3250	457 @ 3250	457 @ 3250	457 @ 3250	457 @ 3250
GVWR	20,500	20,500	20,500	20,500	22,000	22,000	22,000
GAWR – Front	7,000	7,000	7,000	7,000	7,500	7,500	7,500
GAWR – Rear	13,500	13,500	13,500	13,500	14,000	14,000	14,000
GCWR	26,000	26,000	26,000	26,000	26,000	26,000	26,000
UVW	15,300	15,300	16,910	17,160	17,520	17,730	17,730
Overall Height with Roof Air	12' 3"	12' 3"	12' 3"	12' 3"	12' 3"	12' 3"	12' 3"
Wheel Base	208	208	228	228	242	242	242
Tire Size	245/70R 19.5	245/70R 19.5	245/70R 19.5	245/70R 19.5	245/70R 19.5	245/70R 19.5	245/70R 19.5
Fuel Tank (Gallons)	75	75	75	75	75	75	75
Alternator Amps	130	130	130	130	130	130	130
Trailer Hitch Capacity	5,000	5,000	5,000	5,000	5,000	5,000	5,000

WORKHORSE CHASSIS	28 DA	30 DA	32 BA	32 LA	34 TGA	35 QBA	35 TSA
Engine - 340 HP	NA	8.1 L V8	8.1 L V8	8.1 L V8	8.1 L V8	8.1 L V8	8.1 L V8
Torque (Lb.-Ft. Max. Net)	NA	455 @ 3200	455 @ 3200	455 @ 3200	455 @ 3200	455 @ 3200	455 @ 3200
GVWR	NA	20,700	20,700	20,700	22,000	22,000	22,000
GAWR – Front	NA	7,500	7,500	7,500	8,000	8,000	8,000
GAWR – Rear	NA	13,500	13,500	13,500	14,500	14,500	14,500
GCWR	NA	26,000	26,000	26,000	26,000	26,000	26,000
UVW	NA	15,220	16,820	17,280	17,720	17,780	17,780
Overall Height with Roof Air	NA	12' 3"	12' 3"	12' 3"	12' 3"	12' 3"	12' 3"
Wheel Base	NA	208	228	228	242	242	242
Tire Size	NA	245/70R 19.5	245/70R 19.5	245/70R 19.5	245/70R 19.5	245/70R 19.5	245/70R 19.5
Fuel Tank (Gallons)	NA	75	75	75	75	75	75
Alternator Amps	NA	130	130	130	130	130	130
Trailer Hitch Capacity	NA	5,000	5,000	5,000	5,000	5,000	5,000

FREIGHTLINER FRONT ENGINE DIESEL CHASSIS	28 DA	30 DA	32 BA	32 LA	34 TGA	35 QBA	35 TSA
Engine - 300 HP	NA	NA	Cummins	Cummins	Cummins	Cummins	Cummins
GVWR	NA	NA	24,000	24,000	24,000	24,000	24,000
GAWR – Front	NA	NA	9,000	9,000	9,000	9,000	9,000
GAWR – Rear	NA	NA	15,000	15,000	15,000	15,000	15,000
GCWR	NA	NA	26,000	26,000	26,000	26,000	26,000
UVW	NA	NA	18,320	18,780	19,200	19,380	19,380
Overall Height with Roof Air	NA	NA	12' 5"	12' 5"	12' 5"	12' 5"	12' 5"
Wheel Base	NA	NA	228	228	242	242	242
Tire Size	NA	NA	235/80R 22.5	235/80R 22.5	235/80R 22.5	235/80R 22.5	235/80R 22.5
Fuel Tank (Gallons)	NA	NA	80	80	80	80	80
Alternator Amps	NA	NA	160	160	160	160	160
Allison Transmission	NA	NA	S	S	S	S	S

OVERALL	28 DA	30 DA	32 BA	32 LA	34 TGA	35 QBA	35 TSA
Overall Length (Approximate)	27' 7"	31' 3"	32' 10"	33' 5"	34' 10"	35' 10"	35' 7"
Interior Height	78"	78"	78"	78"	78"	78"	78"
Overall Width	101"	101"	101"	101"	101"	101"	101"
Interior Width	96"	96"	96"	96"	96"	96"	96"
Fresh Water (Gallons)	53	53	53	53	53	53	53
Black Water (Gallons)	35	35	35	35	35	35	35
Grey Water (Gallons)	40	70	70	70	70	70	70
LPG Tank (Gallons; can only be filled to 80% capacity)	24	24	24	24	24	24	24
Minimum Garage Height	13'	13'	13'	13'	13'	13'	13'
Basement Storage (Cubic Feet)	61	57	67	67	69	69	83

STRUCTURAL

STANDARD EQUIPMENT ON ALL MODELS:

- Laminated Floor, Sidewall & Roof
- Steel / Aluminum Reinforced Structure
- Full One-piece Fiberglass Roof Cap

EXTERIOR

STANDARD EQUIPMENT ON ALL MODELS:

- Fiberglass Front & Rear End Caps
- Tinted One-piece Windshield
- 4.0 kw Onan® Generator (Will operate only one roof A/C unit.)
- One 13,500 BTU High Profile Roof Coleman A/C (High Efficiency)
- Quiet A/C Roof-ducted System
- Double Electric Step
- 1/4" Thick Single Pane Windows
- Horizontal Mounted Wipers
- Heated Power Mirrors
- Gel-coat Fiberglass Walls
- Exterior Graphics & Paint
- Exterior Patio Light
- Manual Patio Awning
- Slideout Awning(s)
- Exterior Storage Doors with Gas Shocks
- Ridged Long-life Storage Boxes
- Single Handle Lockable Storage Door Latches
- Heated Water & Holding Tank Compartments
- Two 6 V Auxiliary Batteries
- Park Telephone Ready
- TV Antenna
- Cable Ready TV
- Black Holding Tank Flush System
- Exterior Rinse Hose/Shower
- Back-up Monitor
- 110 V Exterior Receptacle
- 110 V / 12 V Converter
- Undercoating
- Roof Ladder
- Wheel Liners
- External Tripod Satellite Hook-up

	28 DA	30 DA	32 BA	32 LA	34 TGA	35 QBA	35 TSA
5.5 kw Onan® Generator* (Gas Engine Only)	O	O	O	O	S *	S *	S *
6.0 kw Onan® Diesel Generator** (FRED Chassis Only)	NA	NA	S **	S **	S **	S **	S **
7.0 kw Onan® Generator - Includes 50 Amp Service (Gas Engine Only)	O	O	O	O	O	O	O
Driver's Door with Power Window	O	O	O	O	O	O	O
Automatic Satellite	O	O	O	O	O	O	O
One 15,000 BTU High Profile Roof A/C with Heat Pump (Requires 5.5 or 7.0 Generator - Front Only)	O	O	O	O	O	O	O
2nd 13,500 BTU High Profile Roof Coleman A/C (High Efficiency)	O	O	O	O	S	S	S
Side View Cameras Activated with Turn Signals	O	O	O	O	O	O	O
Full Body Paint	O	O	O	O	O	O	O

*Gasoline 34 TGA & 35 TSA require a 5.5 or 7.0 kw Onan® Generator

**Standard on all FRED chassis models only

DRIVER'S COMPARTMENT

STANDARD EQUIPMENT ON ALL MODELS:

- Entry Floor Light
- Step Switch & 12 V Disconnect Switch
- Snack / Beverage Tray
- Non-powered Cloth Passenger & Driver Seats (Flexsteel®)
- Lighted Instrument Panel
- Single CD Player & AM/FM Stereo
- Passenger Slide Tray / Computer Drawer
- 12 V Dash Receptacle
- Tilt Steering Wheel
- Dual Dash Fans
- Windshield Privacy Curtain
- Color TV (Front)
- Fire Extinguisher

	28 DA	30 DA	32 BA	32 LA	34 TGA	35 QBA	35 TSA
Powered Cloth Driver Seat (Flexsteel®)	O	O	O	O	O	O	O
24" Digital Front Overhead TV (LCD not available on overhead TV)	S	S	S	S	S	S	S

LIVING AREA/DINETTE

STANDARD EQUIPMENT ON ALL MODELS:

• Large Pull-out Storage Drawers in Booth Dinette

• Booth Dinette

• Cloth Swivel Chair

• Decorative Wall Hanging

	28 DA	30 DA	32 BA	32 LA	34 TGA	35 QBA	35 TSA
Cloth Sofa Bed	NA	S	S	S	S	S	S
Cloth Air Coil® Hide-a-bed	NA	NA	O	O	O	O	O
Sofa in Place of Booth Dinette	O	NA	NA	NA	NA	NA	NA
DVD Player	O	O	O	O	O	O	O
Freestanding Dinette	O	NA	O	O	O	O	O
Drop-down Monitors in Bunk Beds	NA	NA	NA	NA	NA	O	NA
32" LCD TV in Mid Section (Front overhead TV not available)	NA	NA	NA	NA	O	O	NA
32" LCD TV Mid Section & 24" Digital Front Overhead TV (LCD not available on Overhead TV)	NA	NA	NA	NA	O	O	NA

KITCHEN

STANDARD EQUIPMENT ON ALL MODELS:

• Single Lever Satin Nickel Sink Faucet
• Double Bowl Kitchen Sink

• Solid Surface Countertop Accent Edging
• Solid Surface Backsplashes

• 3-Burner Cooktop with Oven
• Microwave

• 8 Cu. Ft. Refrigerator

	28 DA	30 DA	32 BA	32 LA	34 TGA	35 QBA	35 TSA
Convection Microwave	O	O	O	O	O	O	O
Ice Maker in Refrigerator	O	O	O	O	O	O	O
Solid Wood Refrigerator Panels	O	O	O	O	O	O	O

BATH

STANDARD EQUIPMENT ON ALL MODELS:

• Medicine Cabinet

• Skylight in Shower

• Satin Nickel Vanity Faucet

• Toilet

• Fiberglass Molded Shower

	28 DA	30 DA	32 BA	32 LA	34 TGA	35 QBA	35 TSA
Additional Fantastic® Fan (Water Closet Only)	O	O	O	O	O	O	O

BEDROOM

STANDARD EQUIPMENT ON ALL MODELS:

• Wardrobe
• Bed Comforter

• Innerspring Mattress
• Carbon Monoxide Detector

• LPG Leak Detector
• Bed Pillows

• Phone Jack

	28 DA	30 DA	32 BA	32 LA	34 TGA	35 QBA	35 TSA
20" Digital TV	O	O	O	O	O	O	O
Bedroom Day/ Night Shades	O	O	O	O	O	O	O
Mirrored Vanity	S	S	S	S	NA	NA	NA

GENERAL INTERIOR

STANDARD EQUIPMENT ON ALL MODELS:

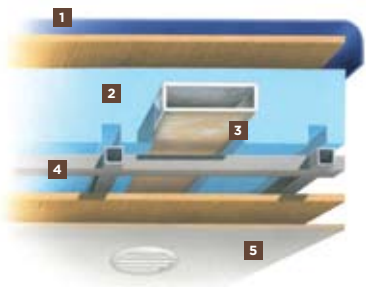
• Raised Panel Cabinet Doors
• Vinyl Headliner
• Medium Alderwood Solid Cabinet Doors & Drawer Fronts
• Wall-to-wall Vinyl Tile Flooring in Living Room, Kitchen & Bath

• Ball Bearing Drawer Slides
• Carpeting in Bedroom
• Scotchgard® Treated Carpet & Fabrics
• Day/ Night Pleated Shades in Living Room
• Power Roof Vents

• Tank Level Monitor System
• Smoke Detector
• 6-Gal DSI Gas/ Electric Water Heater
(Electric not available on units with a 4.0 kw generator)
• Compartment Door with Single Point Latch

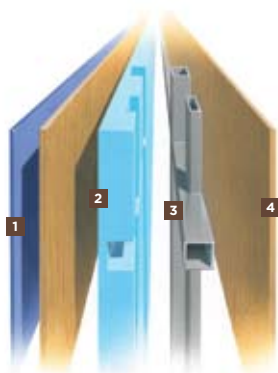
	28 DA	30 DA	32 BA	32 LA	34 TGA	35 QBA	35 TSA
Vacuum Cleaner System	O	O	O	O	O	O	O
One 30,000 BTU Ducted Furnace	S	S	NA	NA	NA	NA	NA
One 35,000 BTU Ducted Furnace	NA	NA	S	S	S	S	S
Natural Maple Solid Cabinet Door & Drawer Front	O	O	O	O	O	O	O
Cherry Bark Solid Cabinet Door & Drawer Front	O	O	O	O	O	O	O

CONSTRUCTION SPECS



ROOF

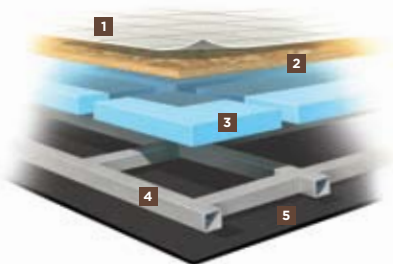
1. One-piece, moisture resistant molded fiberglass roof cap provides insulation and strength and prevents water intrusion
2. 5 1/2" high-performance thermal insulation
3. Quiet Air Cooling System with return air and cooling exhaust ducts foil-wrapped to deflect UV rays and repel heat
4. Durable, tubular steel roof skeleton
5. Easy-to-clean soft touch vinyl ceiling panel



SIDEWALL

1. Gel-coat fiberglass outside wall panel
2. High-performance thermal insulation
3. Durable, yet lightweight, tubular aluminum wall skeleton
4. Decorative inside wall panel

All sidewalls are approximately 2" thick



FLOOR

1. Tile flooring bonded to high-impact oriented strand board
2. High-level engineered oriented strand board
3. High-performance thermal insulation
4. Durable, tubular steel floor skeleton
5. Woven moisture barrier material

10-YEAR UNITIZED CONSTRUCTION LIMITED WARRANTY The structural integrity of the entire coach is guaranteed for the next 10 years. Warranty includes wall separation and inner frame weakness.

5-YEAR "HYDRA-VAC" LAMINATION LIMITED WARRANTY We guarantee against all exterior fiberglass delamination or wall separation.

TIFFIN MOTORHOMES, INC. 105 2ND STREET NW RED BAY, AL 35582
CALL 256.356.8661 FAX 256.356.8219
FOR PARTS AND SERVICE CALL 256.356.0261

For more specifics on what makes a Tiffin Motorhome, go to tiffinmotorhomes.com

The following names are registered trademarks of Tiffin Motorhomes: Open Road®, Phaeton®, Allegro®, Allegro Bay®, Allegro Bus®, Zephyr®, Roughing It Smoothly®, and Pusher®.