

STARCRAFT®
THE FUTURE OF CAMPING | pure and simple.

TRAVEL STAR
& GALAXY FIFTH WHEELS & TRAVEL TRAILERS

DISCOVER A WORLD OF DIFFERENCES! **TRAVEL STAR**



THREE DISTINCT MODEL LINES TO PROVIDE PLENTY OF OPTIONS!



TRAVEL STAR EXPANDABLE.

These unique travel trailers feature an expandable sleeping area. It's a great way to add room to a more compact camper, making towing safe and easy. Expandables are also designed for large families. The Travel Star Expandable offers generous living space and can sleep up to 10. The bunk ends are fully-sealed, cable-supported and fold-out easily. With a variety of floorplans, whether you want a slideout or U-dinette, there is sure to be one that is perfect for your family. See page 5 for Travel Star Expandable standards and options.



TRAVEL STAR TRAVEL TRAILER.

The luxurious Travel Star provides upscale amenities and top-quality for comfortable living. You'll find multiple floorplans along with sleeping accommodations for up to 10. The popular Travel Star is one of the best available values in luxury travel trailer camping. And for those desiring even more luxury, Travel Star upgrade options include the Galaxy Black Pearl Edition, which offers additional conveniences. The Travel Star series includes a higher grade of construction, appliances, furniture, and more. See page 7 for Travel Star travel trailer standards and options.



TRAVEL STAR FIFTH WHEEL.

If you're in the market for a serious mid-priced fifth wheel with similar appointments to high-end, higher priced brands, the Travel Star may be your answer. Consider finer specifications, like a gel-coated fiberglass exterior, 102" wide-body construction, a true queen-sized pillow-top mattress from the Denver Mattress® company and a generous 8 cu. ft. refrigerator, to name a few. With five floorplans to choose from and sleeping for up to 8, Travel Star is unique to family comfort and style. And the optional Galaxy Black Pearl Edition (shown here) provides even more upgrades for the seasoned RVer. See Travel Star fifth wheel standards and options on page 11.

UFO

UNBELIEVABLE FEATURES & OPTIONS.



Outside docking station with exterior shower.



Standard exterior speakers.



Large pass-through storage.



Bedspread, shams, and matching headboard are included with the optional Galaxy Black Pearl Edition.



Frameless windows on Galaxy Black Pearl Edition.



Upgraded aluminum rims.

SPACE AGE CONSTRUCTION FEATURES.

For over 50 years Starcraft RV's reputation has been built around top-quality products. Each is designed to provide years of trouble-free use. Backed by a 2-year limited warranty, our innovation and quality start with a solid foundation. Compare and you'll see just how much care and meticulous attention to "doing it right" goes into every Starcraft.



SEE THE FULL COMPARISON ONLINE AT
STARCRAFTCAMPING.COM



US 4,500 lbs. on a Starcraft roof!



THEM Same weight on a competitor's style roof.



US Vertical wood studs for added support.



THEM Little aluminum brace, if that.

STRONGEST ROOF EVER!

Strength is one of the basic principles of engineering; the stronger something is built, the longer it will last. At Starcraft, we understand strength comes from within, which is why we focused on the smallest of details when constructing our exclusive Magnum Roof System. From sturdier vertical studs to 7" header beams, we pride ourselves on staying at the top of our game—building stronger products that last.



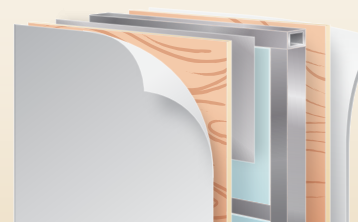
US We use large oversized nail plates on both sides.



THEM They use smaller and only on one side of truss.



Our optional Climate Package extends your camping season, providing protection against cooler temperatures with its insulated, heated and enclosed underbelly.



Using TuffShell™ vacuum-bonded lamination, our walls combine welded aluminum framing, fiberglass sidewalls and metal backers, ensuring your camper can handle the toughest conditions.

TRAVEL STAR EXPANDABLES



239TBS with Truffle interior.



239TBS with Truffle interior.



239TBS with Truffle interior.



239TBS



FULLY FEATURED.

The luxuriously appointed, yet affordable Travel Star EXP models offer all of the conveniences of home: microwave and cooktop, large bathrooms and upgrades like a power awning with LED lighting, outside audio speakers and much more. Expand your camping experience with a Travel Star!



POPULAR STANDARDS

- 78" Ceiling height
- Cable support bunk end system (1,100-lb. capacity)
- Crowned truss roof rafters on 16" centers with 3/8" WALK ON decking
- TuffShell™ Construction featuring vacuum-bonded laminated aluminum framed sidewalls, endwalls, slideout and roof (R-9)
- Magnum Roof System - 50% Stronger
- AquaShield Aqualon water-repellent sectionalized tent with 7-year warranty
- Bunk-end tents permanently attached to bed base
- Digital antenna (TV/FM)
- Self-supporting lockable bunk ends (no poles required)
- Ball bearing drawer guides, 50-lb. capacity with full-drawer extension
- Honey-glazed cherry wood cabinetry
- Pleated shades
- Queen-sized Ultra Plush Denver Mattress® bunk mats

- Oversized kitchen sink with sink cover (select models)
- Residential-style "high rise" faucet with pull-out sprayer

CUSTOMER CONVENIENCE PACKAGE (MANDATORY)

- 13,500 BTU A/C
- ABS propane bottle cover
- Marine-grade exterior speakers (2)
- Microwave with carousel
- Spare tire with carrier
- Stabilizer jacks (4)
- Stereo AM/FM with CD/DVD/USB (12V)
- Water heater bypass system
- 8 cu. ft. refrigerator
- Electric awning with LED lighting
- Kitchen backsplash
- Large grab handle

SHOW STOPPER PACKAGE (MANDATORY)

- Denver Mattress® bunk mat(s)

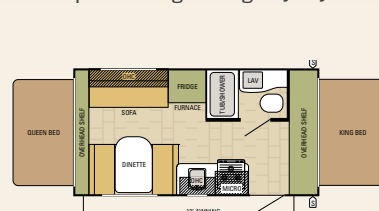
- Aluminum rims
 - EZ-Store detachable cord
 - Docking station with outside sprayer and black tank flush
 - Solar prep
 - Foot-flush toilet
 - Jackknife with pillows (N/A on 187TB)
- ## SELECT PACKAGE
- Porcelain toilet with foot-flush
 - Wood batten ceiling trim
 - Bottom accent crown on kitchen cabinets
 - Tub surround
 - Folding grab handle
 - 2 storage doors for dinette

POPULAR OPTIONS

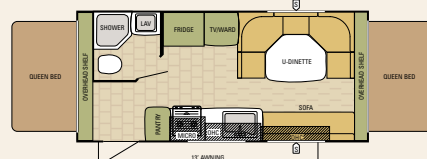
- Medium LED TV
- Bumper-mount grill
- Oven
- Heated bunk mats
- Fan-Tastic® fan

TRAVEL STAR EXPANDABLES

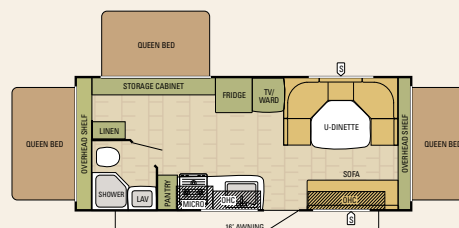
Travel Star Expandables offer the advantages of a traditional travel trailer, yet afford the experience of tent camping. Listen to and smell nature, while sleeping and camping in a travel trailer. Notice the extra room you'll find in an expandable floorplan. They are easier to tow. Easy to store. And quick to set up. Each floorplan is designed to give you years of camping enjoyment!



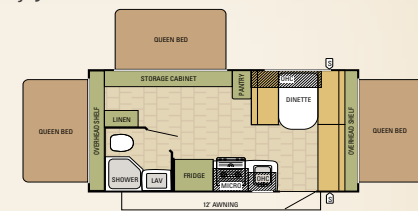
186RD | TRAVEL STAR



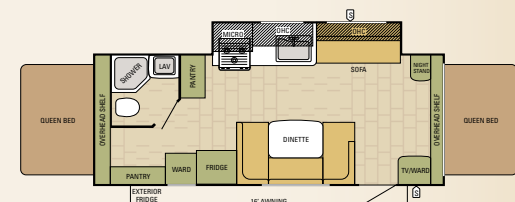
207RB | TRAVEL STAR



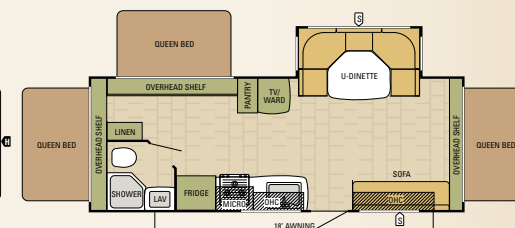
229TB | TRAVEL STAR



187TB | TRAVEL STAR



227CKS | TRAVEL STAR



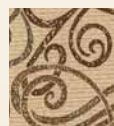
239TBS | TRAVEL STAR

FOR FULL OPTIONS AND MORE STANDARD FEATURES GO TO starcraftcamping.com

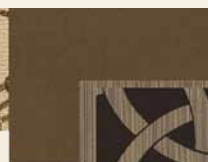
SPECIFICATIONS	186RD	187TB	207RB	227CKS	229TB	239TBS
Unloaded Vehicle Weight (lbs.)	3642	3650	3962	4740	4391	5050
Dry Hitch Weight (lbs.)	485	445	405	460	440	480
Gross Vehicle Weight Rating (lbs.)	4475	4475	4950	5975	5450	6500
Cargo Carrying Capacity (lbs.)	1110	860	1280	1280	1335	1725
Exterior Length	20' 7"	21' 4"	22' 9"	25' 9"	25' 11"	27' 0"
Exterior Width	96"	96"	96"	96"	96"	96"
Exterior Height with A/C	122"	122"	122"	127"	122"	128"
Interior Height	78"	78"	78"	78"	78"	78"
Fresh Water Capacity (gals)*	28.5	28.5	28.5	28.5	28.5	28.5
Gray Wastewater Capacity (gals)	30.8	30.8	30.8	30.8	30.8	30.8
Black Wastewater Capacity (gals)	30.8	30.8	30.8	30.8	30.8	30.8
Sleeping Capacity	6-7	7-8	7	6-8	8-9	8-10

*Includes water heater. The weights of mandatory options are included in the UVW listed above, but optional packages are not included. See weight information details on the back of this brochure.

TRAVEL STAR DECOR.



Caramel



Truffle



Sand



Wood



Carpet



Countertops



Flooring

TRAVEL STAR/GALAXY TRAVEL TRAILERS



335RLK with Galaxy Black Pearl and Caramel interior.



314RESA with Sand interior.



314RESA with Caramel interior.



335RLK with optional Galaxy Black Pearl Edition.



EXQUISITE TASTE.

From its honey-glazed cherry wood cabinetry to rich upholstery and even the rugged Magnum Roof System, Travel Star brings the best of quality to this upscale mid-priced travel trailer. Seasoned RVers will appreciate the meticulous attention to detailing. See the list on page 7 for more standards and options.



POPULAR STANDARDS

- 5/8" tongue-and-groove plywood floor
- 5" Crowned truss roof rafters on 16" centers with 3/8" WALK ON decking
- 6' Interior slideout height
- 7' Interior ceiling height
- Screwed-stile hardwood cabinetry
- R-14 insulation in roof and floor
- TuffShell™ construction featuring vacuum-bonded laminated aluminum framed sidewalls, endwalls, slideout and roof (R-9)
- Magnum Roof System - 50% Stronger
- 6-Gal. gas/electric DSI water heater
- 30-Lb. propane bottles with cover (2)
- 30" x 72" Radius-cornered main entrance door with screen door
- Digital antenna (TV/FM)
- Large folding grab handle at entry door
- Outside TV prep
- Solar prep
- StarMAXX Pass-Thru storage system: TPO composite flooring, dual tie down tracks, battery disconnect switch and Toy-Lok®
- 21" Round skylight with LED lighting in living room/kitchen

- Ball-bearing drawer guides, 50-lb. capacity with full-drawer extension
- Command center with centrally-located switches
- Glass shower doors
- Honey-glazed cherry wood cabinetry
- Pleated shades
- Ultra Plush Denver Mattress® bunk mats
- Sleeper sofa
- Deep-storage drawers under booth dinette seat (2)
- Double drawer with integrated silverware dividers
- Integrated trash can storage (select models)
- Pots and pans drawer below oven (select models)
- Solid-surface kitchen countertops with undermounted sink and sink covers

CUSTOMER CONVENIENCE PACKAGE (MANDATORY)

SHOW STOPPER PACKAGE (MANDATORY)

GALAXY BLACK PEARL EDITION (OPTIONAL)

- Frameless windows
- Front and rear electric stabilizer jacks

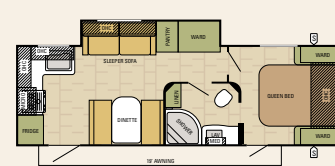
- Painted copper/black front cap
- Cream colored hi-gloss gel-coated fiberglass sidewalls and rearwall
- Upgraded graphics
- Tankless water heater
- MCD® night roller shades
- Wood accent window trim
- Wood accent ceiling trim
- Denver Mattress® pillow top
- Upgraded bedspread with shams

POPULAR OPTIONS

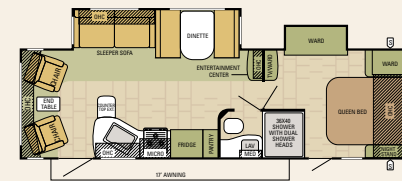
- 12 cu. ft. refrigerator
- Medium LED TV in bedroom with inside/outside bracket
- 50-amp service with 2nd A/C prep
- Climate Package: insulated, heated and enclosed underbelly; foil insulation in roof
- Fireplace (324RLTS)
- Second 13,500-BTU A/C (requires 50 AMP electrical service)
- Wireless back-up camera system
- Raised panel hardwood cabinetry in kitchen/living room and hardwood refrigerator inserts
- Fan-Tastic® fan with vent cover in kitchen/ living room

TRAVEL STAR AND GALAXY BLACK PEARL TRAVEL TRAILERS

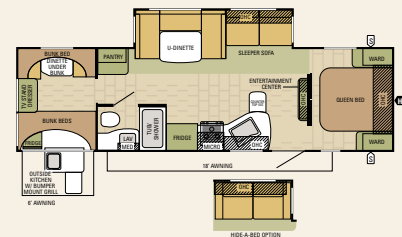
One of Starcraft's top-of-the-line travel trailers, the luxurious Travel Star, brings value and exquisite styling together. Craftsmanship, quality and unsurpassed features like optional Climate Insulation Package, StarMAXX Pass-Thru storage, 7' interior height, sleeper sofa and much more grace this model line. Upgrade even further to the Galaxy Black Pearl package for first-class travel.



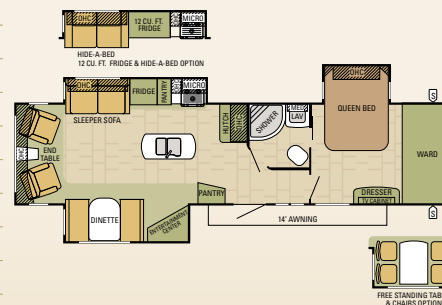
274RKS | TRAVEL STAR



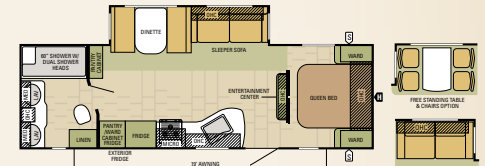
286RLWS | TRAVEL STAR



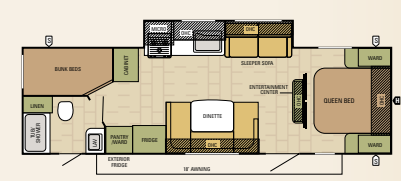
309BHS | TRAVEL STAR



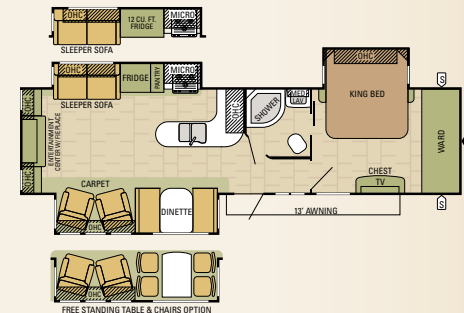
324RLTS | TRAVEL STAR



285FB | TRAVEL STAR



299BHU | TRAVEL STAR



314RESA | TRAVEL STAR



335RLK | TRAVEL STAR

FOR FULL OPTIONS AND MORE STANDARD FEATURES GO TO starcraftcamping.com

SPECIFICATIONS

	274RKS	285FB	286RLWS	299BHU	309BHS	314RESA	324RLTS	335RLK
Unloaded Vehicle Weight (lbs.)	6006	6608	6926	6315	7067	8631	8360	8807
Dry Hitch Weight (lbs.)	720	795	955	765	805	1200	1210	970
Gross Vehicle Weight Rating (lbs.)	7750	8250	9000	7950	8800	10800	10500	10950
Cargo Carrying Capacity (lbs.)	1905	1805	2370	1695	1930	2190	2305	2083
Exterior Length	30' 1"	32' 2"	33' 3"	32' 8"	34' 2"	37' 11"	38' 5"	39' 4"
Exterior Width	96"	96"	96"	96"	96"	96"	96"	96"
Exterior Height with A/C	138"	137 1/4"	137"	138"	138"	136 1/4"	135 3/4"	137"
Interior Height	84"	84"	84"	84"	84"	84"	84"	84"
Fresh Water Capacity (gals)*	68.6	72.6	72.6	68.6	68.6	68.6	68.6	68.6
Gray Wastewater Capacity (gals)	61.6	61.6	30.8	30.8	30.8	30.8	61.6	61.6
Black Wastewater Capacity (gals)	30.8	30.8	30.8	30.8	30.8	30.8	30.8	30.8
Sleeping Capacity	4-6	3-6	3-6	6-8	9-10	3-4	3-6	3-6

*Includes water heater. The weights of mandatory options are included in the UWW listed above, but optional packages are not included. See weight information details on the back of this brochure.

TRAVEL STAR GALAXY BLACK PEARL FIFTH WHEELS



305RLT with Galaxy Black Pearl and Truffle interior.



305RLT with optional Galaxy Black Pearl Edition.

GALAXY BLACK PEARL EDITION.

The optional Galaxy Black Pearl features upgrades like cream-colored hi-gloss gel-coated fiberglass side and rear walls, frameless windows, tankless water heater, MCD® roller shades, black/copper front cap and more!



TOP-QUALITY SLAM LATCHES.

Oversized, pass-through baggage compartments feature large doors with slam latches and locks—the easiest-to-use and operate on the planet!



305RLT with Galaxy Black Pearl and Truffle interior



102" width allows for more hallway, bedroom and living space.

TRAVEL STAR

Galaxy

LIVING ROOM.

You'll find unique luxury standard features like our 21" round skylight with LED lighting, a sleeper sofa and brand name carpet—and options include recliner chairs, and a fireplace.

KITCHEN.

Easy to spot quality with honey-glazed cherry wood cabinetry, backsplash, solid-surface countertops and LED accent lighting under countertops, but quality goes beyond the surface with heavy-duty ball-bearing drawer guides and much more.

BEDROOM.

All Starcraft fifth wheels feature 102" width vs. the industry's 96". This means more hallway space and bigger bedrooms. Included in the optional Galaxy Black Pearl Edition is a Denver® brand quality mattress in 60" x 80" queen bed size. See more standards on page 11.

BATHROOM.

Large shower and glass door, medicine cabinet with mirror, vinyl flooring and decorative hardware highlight your bathroom. Starcraft makes the best use of space.

TRAVEL STAR FIFTH WHEELS



337BHS with Truffle interior.



337BHS with Truffle interior.



Large capacity refrigerator



337BHS



BEST OF ALL WORLDS.

From its residential-style high-rise faucet with solid surface sink covers to plentiful and sturdy cabinetry (drawers are rated for 50 lb. capacity and feature ball-bearing drawer guides), you'll find quality throughout a Travel Star fifth wheel. The large 12 cu. ft. refrigerator pictured above is optional.



POPULAR STANDARDS

- 102" Wide exterior = 6" wider hallways on the inside
- Drop-frame front basement storage area
- TuffShell™ construction featuring vacuum-bonded laminated aluminum framed sidewalls, endwalls, slideout and roof (R-9)
- 5/8" Tongue-and-groove plywood floor decking
- 6' interior slideout height
- 10-Gal. gas/electric DSI water heater
- Universal docking center
- 21" round skylight with LED lighting in living room/kitchen
- Ball-bearing drawer guides, 50-lb. capacity with full-drawer extension
- Honey-glazed cherry wood cabinetry
- Solid-surface countertops with sink cover and pop-up USB and electrical receptacle

CUSTOMER CONVENIENCE PACKAGE (MANDATORY)

SHOW STOPPER PACKAGE (MANDATORY)

GALAXY BLACK PEARL EDITION (OPTIONAL)

- Rear electric stabilizer jacks
- Painted copper/black front cap
- Cream colored hi-gloss gel-coated fiberglass sidewalls and rear wall
- Frameless windows
- Upgraded graphics
- Tankless water heater
- MCD® night roller shades
- Wood accent window trim
- Wood accent ceiling trim
- Denver Mattress® pillow top mattress
- Upgraded bedspread with shams

POPULAR OPTIONS

- Medium LED TV in bedroom with inside/outside bracket
- Climate Package: insulated, heated and enclosed underbelly; foil insulation in roof
- Cargo accessory receiver
- Fireplace
- Wireless back-up camera system
- Fan-Tastic® fan with vent cover in kitchen/living room
- Raised panel hardwood cabinetry in kitchen/living room and hardwood refrigerator inserts
- 12 cu. ft. refrigerator (N/A 288BH)

FOR FULL OPTIONS AND MORE STANDARD FEATURES GO TO starcraftcamping.com

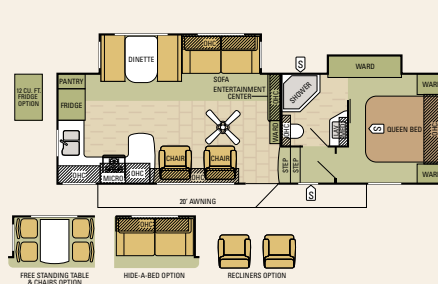
SPECIFICATIONS

	276RKS	287RLS	288BHS	305RLT	337BHS
Unloaded Vehicle Weight (lbs.)	8254	8610	8402	9233	11020
Dry Hitch Weight (lbs.)	1705	1965	1665	2005	1950
Gross Vehicle Weight Rating (lbs.)	10250	10750	10500	11000	13250
Cargo Carrying Capacity (lbs.)	2350	2375	2695	1707	2170
Exterior Length	32' 0"	32' 4"	31' 11"	34' 10"	38' 9"
Exterior Width	102"	102"	102"	102"	102"
Exterior Height with A/C	152 1/4"	148 1/4"	149"	148 1/4"	153 3/4"
Interior Height (bedroom)	76"	76"	76"	76"	76"
Interior Height (living area)	102"	102"	102"	102"	102"
Fresh Water Capacity (gals)*	72.6	72.6	72.6	72.6	72.6
Gray Wastewater Capacity (gals)	61.6	30.8	61.6	50	58
Black Wastewater Capacity (gals)	30.8	30.8	30.8	50	50
Sleeping Capacity	3-6	4-5	5-8	3-6	8-10

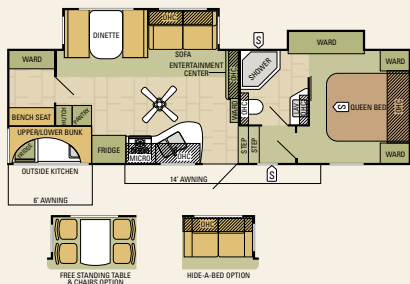
*Includes water heater. The weights of certain options and/or option packages are not included in the UWW listed above. See weight information details on the back of this brochure.

TRAVEL STAR AND GALAXY BLACK PEARL FIFTH WHEELS

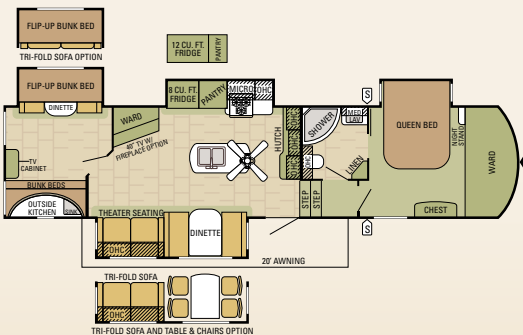
With five unique floorplans to choose from, and sleeping capacity for up to 8, a Travel Star fifth wheel is sure to please even the most seasoned RVer. Starcraft's rich history and reputation for innovative quality will allow you to sit back and enjoy your camping experience—pure and simple!



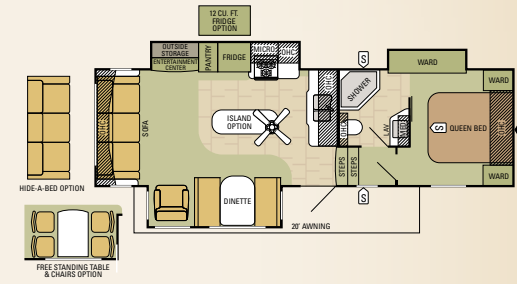
276RKS | TRAVEL STAR



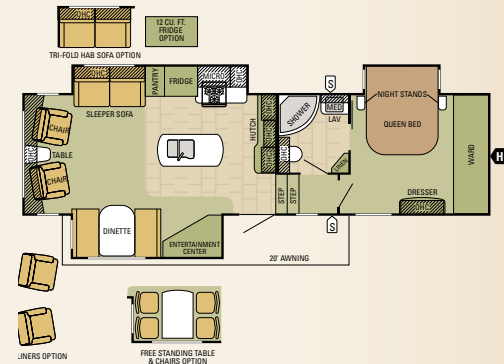
288BHS | TRAVEL STAR



337BHS | TRAVEL STAR



287RLS | TRAVEL STAR



305RLT | TRAVEL STAR

TRAVEL STAR. THE FUTURE OF CAMPING JUST GOT BRIGHTER!



LANDED IN 1964. Starcraft is one of the oldest and most respected names in the RV industry. In fact, we've been around since 1903. Back then, we made our name building livestock tanks and other metal farm equipment. In the 1920's, we added a variety of boats to our product lineup. And in 1964, we entered—and revolutionized—the modern camping industry.



2-YEAR WARRANTY. The Starcraft warranty is a manufacturer's limited warranty. Each Starcraft is warranted to the original purchaser for 24 months from the original date of purchase against defects in materials and workmanship. For a copy of the limited warranty with full terms and conditions, ask your local Starcraft RV dealer.



GET MORE OF WHAT YOU NEED IN CYBERSPACE. Explore more Starcraft RVs by visiting our world-class website. This advanced, digital-age-friendly site offers more product photo galleries, construction information, videos, the latest floorplans, specifications and other great features to assist you. Find your closest dealer, customer service info and more!

STARCRAFTCAMPING.COM

ROADSIDE ASSISTANCE. Travel worry-free with the complimentary one-year Roadside Assistance program through a third-party provider, which gives you immediate access to dependable roadside assistance with a simple phone call. Check with your local dealer to learn more (available at participating dealers).



SAVING THE PLANET. The Starcraft EcoAdvantage™ is our company's commitment to protecting the environment. Through smart sustainability efforts, we're creating better ways to build better RVs using fewer or renewable natural resources. This is our commitment to you—to build a better RV so that we can do a better job of protecting our planet. Learn more at StarcraftRV.com/EcoAdvantage.

SEE YOUR LOCAL STARCRAFT DEALER:

Colton RV & Marine
3122 Niagara Falls Blvd.
North Tonawanda, NY 14120
(716) 694-0188
www.ColtonRV.com

Colton RV
489 Bushkill Plaza LN #9665
Wind Gap, PA 18091
(610) 863-5239
www.ColtonRV.com

STARCRAFT®

THE FUTURE OF CAMPING | pure and simple.

536 Michigan Street
Topeka, IN 46571 USA

Phone: (800) 945-4787
Web: starcraftcamping.com

**FOR INTELLIGENT LIFE
FOLLOW US ON:**



Unloaded Vehicle Weight (UVW): Sometimes referred to as "Dry Weight," UVW means the typical weight of this trailer as built at the factory. The UVW, as used in product literature and other promotional materials, does not include cargo, fresh water, propane, options or dealer-installed accessories. **Gross Vehicle Weight Rating (GVWR):** GVWR means the maximum permissible weight of the trailer, including the UVW plus passengers, personal items, all cargo, fluids, options, and dealer-installed accessories. The GVWR is equal to or greater than the sum of the UVW and the CCC. **Cargo Carrying Capacity (CCC):** CCC means the maximum weight of all passengers, personal items, food, fresh water, propane, tools, other cargo and dealer-installed accessories that can be carried by the trailer. CCC is equal to or less than GVWR minus UVW. The addition of options will decrease the CCC. **Hitch Weight (HW):** The hitch weight, as used in product literature and other promotional materials, does not include cargo, fresh water, propane gas, options or dealer-installed accessories. The addition of these types of items will either add to or subtract from the stated hitch weight. It is important for your safety and enjoyment that your tow vehicle be adequately sized and equipped to tow and handle the GVWR of the RV you select. Review weights and rating of your tow vehicle and consult a competent advisor for questions or advice. Whether you are new to RVing or a veteran, get a feel for the performance of your tow vehicle before heading out on the roadways. When you tow an RV, you must drive differently than when you drive a single vehicle. Practice hooking up, driving, backing up and braking in a safe environment or seek out professional instruction. Starcraft affixes a weight label to each RV which lists weight information for that vehicle. See specifications chart on the respective pages of this brochure.

All information contained in this brochure and on the Starcraft RV website is the latest available and is correct to the best of our knowledge at the time of publication approval. Starcraft reserves the right to make changes and to discontinue models without notice or obligation. Photography may show optional equipment or props used for decoration purposes only. RVs built for sale in Canada may differ to conform to Canadian codes. Check with your Starcraft dealer for the latest in specifications, standard and optional equipment. 01/16
© 2016 STARCRAFT RV, INC.