

TIFFIN

2026

CLASS-A

ZEPHYR





2026 ZEPHYR

## EMBARK ON AN UPSCALE ADVENTURE.

Experience the pinnacle of luxury travel with the all-new 2026 Tiffin Zephyr, the crown jewel of Tiffin's motorhome lineup. Designed for those who expect nothing less than the best, the Zephyr combines state-of-the-art technology with unmatched craftsmanship. New features include a redesigned dash with push-button start, Tiffin's PowerDrive™ Steering Assist Column with steering column and pedal memory, and the cutting-edge Mobileye® safety system for added confidence on the road. The coach now supports Multiplex over-the-air updates, ensuring your systems are always up to date. Inside, enjoy upgraded kitchen fixtures, under-cabinet storage, and coordinated finishes in the bathroom, along with stylish new tile floors and wallboards. Pet lovers will appreciate the new Pet Perks Premium Package, featuring a leash holder at the entry, pull-out pet dish, and an integrated pet monitoring system. The Zephyr offers thoughtful convenience throughout, with features like a kitchen island with a dinette bar option (45 FZ), bedroom ceiling fan, power slide trays, and a swiveling mount for the exterior TV. Personalize your coach with new interior decor packages like Mystic and Enchantment, two-tone cabinetry, and blackout trim accents including black wheels, logos, and mirrors. From the road to your destination, the 2026 Zephyr delivers elegance, performance, and the freedom to live luxuriously—wherever you go.

**Top to bottom:** Bedroom shown with the Enchantment Décor Package with Black Truffle Cabinets. Kitchen and Living Area shown with Black Truffle Cabinetry and Articulo Editorial White flooring.





## Premium Paint System

The eight-step, full-body paint system features premium grade paints sealed with four layers of clear coat with ultraviolet protection. An additional layer of high-performance film protects the front of the coach and select areas.

## Midnight Edition



## Generation 12



G12 CARDINAL



G12 VOLTAGE



G12 BORDEAUX



G12 NASA

## Generation 13



G13 CARDINAL



G13 VOLTAGE



G13 BORDEAUX



G13 NASA



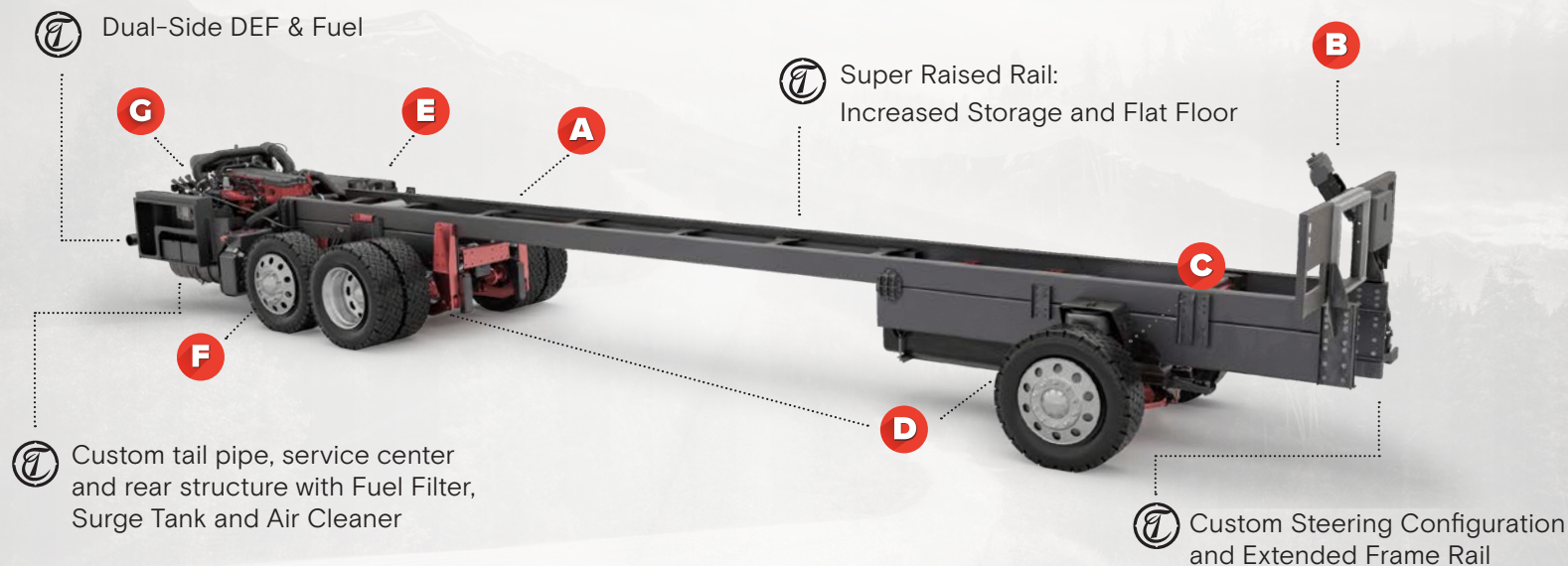
# TIFFIN

MOTORHOMES

Images shown are representations of paint layouts only and do not reflect all exterior features or options. Colors shown may slightly differ from colors on actual product.

# TIFFIN POWERGLIDE SL

## CHASSIS WALKAROUND



**A**  
**V-RIDE** ENHANCED ROLL STABILITY AND RIDE  
WITH INCREASED CAPACITY FOR CARGO

**B**  
AUTOMOTIVE-LIKE DRIVING EXPERIENCE  
WITH INTEGRATED SAFETY SYSTEMS

**DRIVETECH**  
WITH **ROADWATCH**

**OPTIVIEW**

RoadWatch Features:  
Collision Mitigation  
Adaptive Cruise Control  
Electronic Stability Control  
with Roll Stability Support  
Automatic Traction Control

**C**  
**KONI FS** PREMIUM COACH-LIKE FEEL AND MANEUVERABILITY

**D**  
**KONI** FINE-TUNED TO IMPROVE RIDE COMFORT

**E**  
**BRAKE SYNC** INTEGRATED AIR SUPPLY FOR  
TOW VEHICLE BRAKE SYSTEM

**F**  
**ULTRA STEER** TIGHTER TURNS & NO TIRE SCRUB

**G**  
MOST RELIABLE ENGINE & TRANSMISSION ON THE MARKET

605 HP  
Cummins X15

Allison  
4000 6-Speed

**24/7 DIRECT**  
FACTORY-DIRECT SUPPORT FOR  
THE LIFE OF THE COACH

**5 YEAR 100,000-MILE WARRANTY**  
INDUSTRY-LEADING WARRANTY FOR  
INCREASED CONFIDENCE



FLOOR PLAN	Overall Length (approx.) <sup>1</sup>	Wheel Base <sup>2</sup>	Overall Width <sup>1</sup>	Overall Height	Minimum Garage Height	Interior Height	Interior Width	Square Footage (approx.) <sup>3</sup>	Basement Storage (cubic feet, approx.)	GAWR-Front (pounds)	GAWR-Tag Axle (pounds)	GAWR-Rear (pounds)	GVWR (pounds)	Maximum Trailer Weight (pounds) <sup>4</sup>	Hitch Rating (pounds) <sup>2</sup>	GCWR (pounds)
45 FZ	45'	316"	101"	13' 4"	14'	83"	96"	440	237	20,000	14,000	20,000	54,000	20,000	20,000	74,000
45 PZ	45'	316"	101"	13' 4"	14'	83"	96"	440	237	20,000	14,000	20,000	54,000	20,000	20,000	74,000

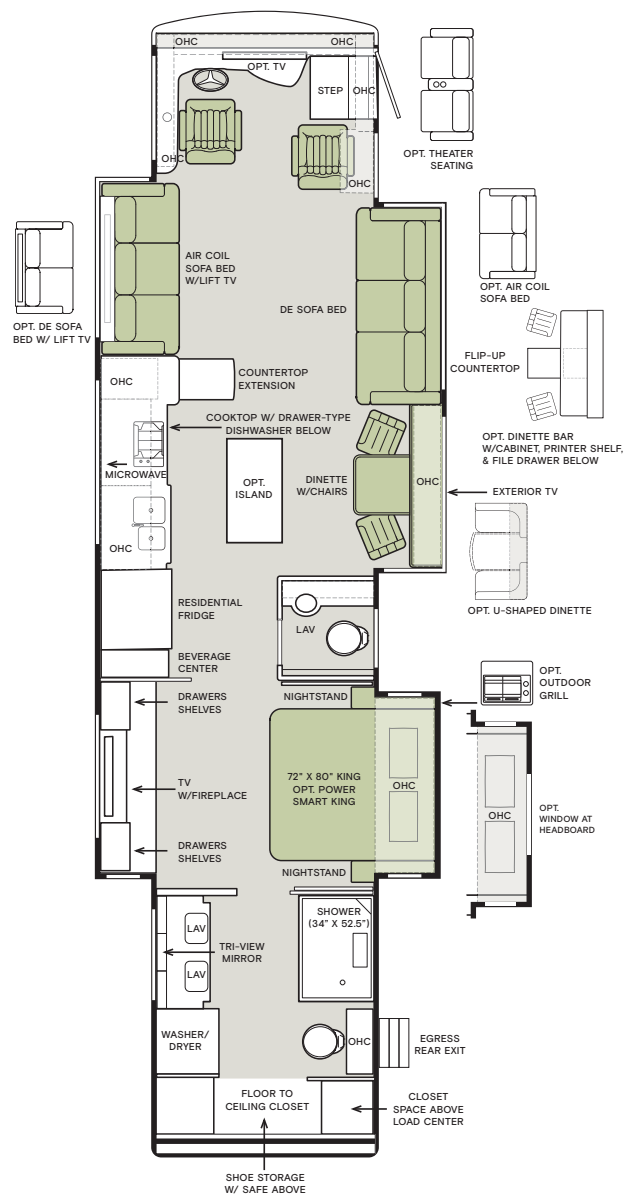
<sup>1</sup> The approximated coach width and length does not include side-view mirrors or ladders.

<sup>2</sup> Measurement is taken from the center of the steer axle to the centerline between the drive and tag axle.

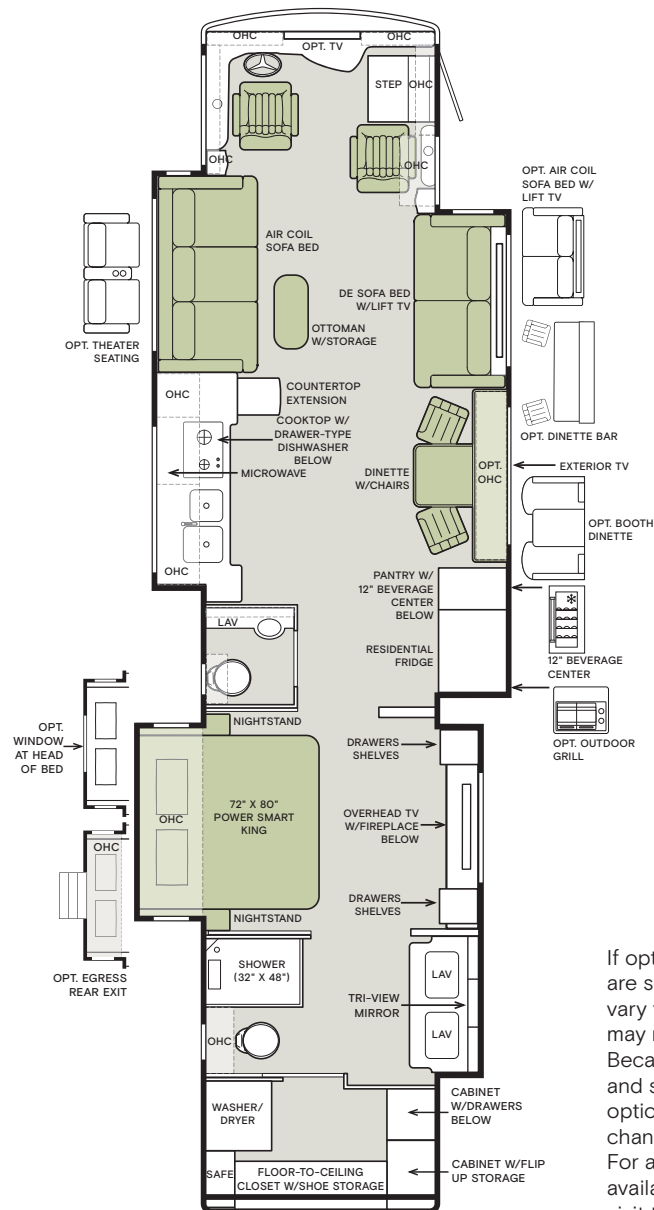
<sup>3</sup> Square footage was calculated with the slide-outs fully extended.

<sup>4</sup> Maximum trailer weight is dependent on the loading and towing variables which include the GVWR, GAWR, and GCWR, as well as adequate trailer brakes.

## 45 FZ



## 45 PZ



If optional furniture combinations are selected, window locations may vary from diagram shown. All options may not be available in every model. Because of progressive improvements and specifications, standard and optional equipment are subject to change without notice or obligation. For a complete and up-to-date list of available options and specifications, visit [tiffinmotorhomes.com](http://tiffinmotorhomes.com).

## 2026 WHAT'S NEW

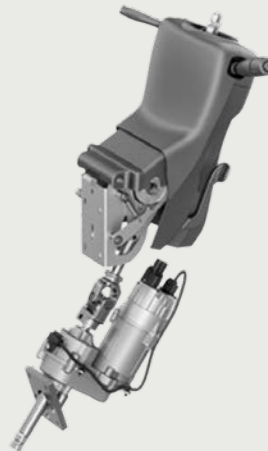
- Tiffin PowerDrive Steering Assist Column With Steering Column And Pedal Memory
- Added Mobileye
- Multiplex Over-the-Air Updates
- Optional Bathroom Egress Door on 45 FZ
- Redesigned Dash With Push Button Start
- Under Cabinet Storage
- Plumbing Fixtures, Hardware, and Shower Enclosure Coordinate Colors
- Kitchen Faucet Upgrade
- 110V Outlet Added to Booth Dinette Seat
- Black-Out Option to include black luggage door latches and trim, side mirrors, and logos
- Pet Perks Premium Package:
  - Pet Leash Holder at Entry Door
  - Pull Out Pet Dish Holder
  - Pet Monitoring System
- Dinette Bar Option
- Front Dinette Overhead Cabinet Option on 45 PZ
- Bedroom Ceiling Fan Option
- (2) Power Slide Trays Standard
- RGB Accent Lighting on Spyder
- Swivel Mount for Exterior TV
- Kitchen Island with Dinette Bar Option on 45 FZ
- New Tile Floor Designs
- New Wallboard
- Two-Tone Cabinet Option Available with White Linen Upper Cabinets
- Wexco Windshield Wipers
- Black Wheel Option
- Notification Added to Spyder Main Touch Panel to Indicate When the AC Override is Enabled
- Prep For Satellite Internet
- Bathroom Shade Operates Independent From Master
- New Interior Decor Packages
  - Mystic
  - Enchantment
- Bedding and Pillows From Eastern Accents
- Midnight Exterior Color in Generation 2 Paint Scheme with Black Wheels
- New Generation 12 & 13 Paint Schemes
- No Longer Available**
- Generation 14 Paint Scheme

YOU'RE IN CONTROL WITH

# POWER DRIVE

## DRIVER COMFORT, COACH CONFIDENCE

- Steering automatically returns to center, easing operation.
- Powered tilt and telescoping column control with customer position memory.
- Reduces driver fatigue



## SAFETY FEATURES

- Enhanced drivability and maneuverability
- Road crowning and crosswind compensation for safer operation at highway speeds
- Better handling and directional control in any adverse road conditions (potholes, bumps, etc.)

Interior Décor

MYSTIC NEW



WINDOW TREATMENT



ULTRAFABRICS® MOURNING DOVE



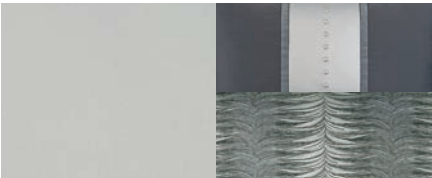
BACKSPLASH



COUNTERTOP



LIVING ROOM



MASTER SUITE

ENCHANTMENT NEW



WINDOW TREATMENT



ULTRAFABRICS® COFFEE CREAM



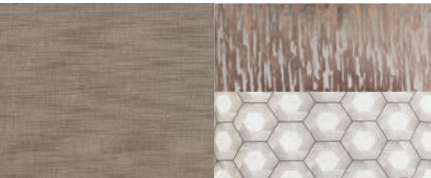
BACKSPLASH



COUNTERTOP



LIVING ROOM



MASTER SUITE

ZEPHYR



MR. BOB TIFFIN RECOMMENDS  
MYSTIC DÉCOR PACKAGE  
WITH WHITE LINEN CABINETS AND  
MARBLE OBSESSION FLOORING.

FLOORING



MARBLE OBSESSION  
Polished Porcelain Tile

NEW

(Recommended with Mystic Decor Package)

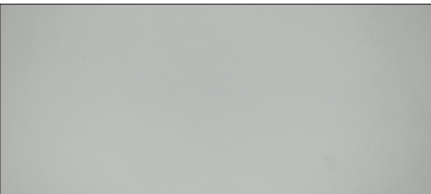


ARTICULO EDITORIAL WHITE  
Matte Porcelain Tile

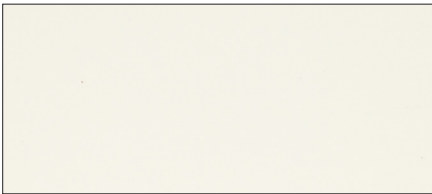
NEW

(Recommended with Enchantment Decor Package)

CABINETS



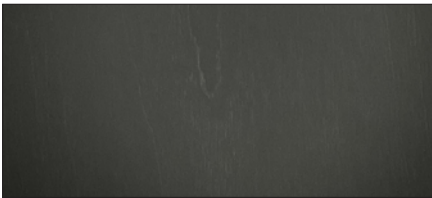
PLATINUM



WHITE LINEN



SANDSTONE



BLACK TRUFFLE



GLAZED CANYON CHERRY



GLAZED HONEY NATURAL CHERRY

1

YEAR OR 12,000 MILES  
LIMITED WARRANTY

3

YEAR DELAMINATION  
LIMITED WARRANTY WITH  
NO MILEAGE LIMITATION

5

YEAR CONSTRUCTION  
LIMITED WARRANTY WITH  
NO MILEAGE LIMITATION

1

YEAR COACH  
ROADSIDE SERVICE

∞

ONGOING  
CUSTOMER SUPPORT

FOR SALES CALL 256-356-8661, PARTS & SERVICE CALL 256.356.0261 OR VISIT [TIFFINMOTORHOMES.COM](http://TIFFINMOTORHOMES.COM)  
105 2ND ST NW RED BAY, AL 35582 [f](#) [i](#)

Colton RV & Marine  
3122 Niagara Falls Blvd  
North Tonawanda, NY 14120  
(716) 694-0188  
[www.ColtonRV.com](http://www.ColtonRV.com)

Colton RV & Marine  
3443 Southwestern Blvd.  
Orchard Park, NY 14127  
(716) 957-3250  
[www.Coltonrv.com](http://www.Coltonrv.com)



**TIFFIN**  
MOTORHOMES

All trademarks and logos are owned or used under license by Tiffin Motor Homes, Inc. and include, but are not limited to: TIFFIN®, MANY ADVENTURES. ONE DREAM™, ALLEGRO®, ALLEGRO BREEZE®, ALLEGRO RED®, PHAETON®, ALLEGRO BUS®, ZEPHYR®, WAYFARER®, ROUGHING IT SMOOTHLY®, OPEN ROAD®, BYWAY™, and associated logos and emblems. Unauthorized use of any trademark of Tiffin Motor Homes, Inc. is strictly prohibited.  
© Copyright 2024 Tiffin Motor Homes, Inc.

For all information concerning the limited warranty provided by Tiffin, please refer to the full written limited warranty set forth on the Tiffin website or held by our authorized dealerships.  
Please note, some interior furnishings not included. Revised: 8/22/24