

CLASS-A

PHAETON

2026



What's New Summary - Phaeton

- Freightliner Custom Chassis Change to Koni Shocks
- Freightliner Custom Chassis with BrakeSync (Air Force One)
- Pet Perks Package:
 - Pet Leash Holder at Entry Door
 - Pull Out Pet Dish Holder
- Exterior LP Hook Up ¹
- Swivel Mount for Exterior TV
- Galley Faucet
- Tile Floor Design and Options
- Wallboard
- New Interior Decor Packages
 - Gelato
 - Titanium
 - Mesa
- Furniture Coverings
- Spyder Controls Option Added for Bed Lift
- Plumbing Fixtures, Towel Bars, and Cabinet Hardware Through out in a Matte Black Finish
- Screens Added to Cockpit Windows
- Hidden Toilet Paper Dispenser
- Notification Added to Spyder Main Touch Panel to Indicate When the A/C Override is Enabled
- Prep for Satellite Internet Standard
- Black Wheel Option
- Outlet in Booth Dinette and U Shaped Booth Dinette
- Midnight Exterior Color in Generation 2 Paint Scheme

¹ Exterior LP Hook Up is not available on coaches equipped with Aqua Hot.

A LUXURY LIFESTYLE MADE FOR YOU!

The 2026 Phaeton redefines luxury on the road with a host of new upgrades designed to elevate every journey. With four spacious floor plans ranging from 37' 9" to 45', there's a perfect option for every traveler. We're unveiling new interior decors and stylish tile floor choices, including a heated tile option, giving you options to match your tastes and lifestyle. And for pet lovers, the optional Pet Perks Package ensures your furry friends travel in comfort too. No matter where the road takes you, the 2026 Phaeton is ready to take your travel experience to the next level.



Premium Paint System

The eight-step, full-body paint system features premium grade paints sealed with four layers of clear coat with ultraviolet protection. An additional layer of high-performance film protects the front of the coach and select areas.

Our Generation 11, Generation 12, and Midnight Blue Edition premium paint schemes now give you 11 different ways to make your 2026 Phaeton your very own. To learn more, visit tiffinmotorhomes.com.

GENERATION 11



G11 BORDEAUX



G11 WATERFALL



G11 FROSTED GRANITE

GENERATION 12



G12 BORDEAUX



G12 WATERFALL



G12 FROSTED GRANITE

Premium Paint System

GENERATION 11



G11 NASA



G11 WHITE MAHOGANY

GENERATION 12



G12 NASA



G12 WHITE MAHOGANY



G2 MIDNIGHT BLUE EDITION

Images shown are representations of paint layouts only and do not reflect all exterior features or options. Colors shown may slightly differ from colors on actual product.

Floor Plans and Specifications

FLOOR PLAN	Overall Length (approx.) ¹	Wheel Base ²	Overall Width ¹	Overall Height ³	Minimum Garage Height	Interior Height	Interior Width	Square Footage (approx.) ⁴	Basement Storage (cubic feet, approx.) ⁵	GAWR-Front (pounds)	GAWR-Tag Axle (pounds)	GAWR-Rear (pounds)	GVWR (pounds)	Maximum Trailer Weight (pounds) ⁵	Hitch Rating (pounds)	GCWR (pounds)
35 CH	37' 9"	222"	101"	13' 3"	14'	83"	96"	375	131	16,000	-	24,000	40,000	10,000	10,000	50,000
37 BH	38' 2"	234"	101"	13' 3"	14'	83"	96"	375	162	16,000	-	24,000	40,000	10,000	10,000	50,000
40 IH	41' 4"	266"	101"	13' 3"	14'	83"	96"	405	232	16,000	-	24,000	40,000	10,000	10,000	50,000
44 OH	45'	310"	101"	13' 3"	14'	83"	96"	440	232	16,000	10,000	20,000	46,000	10,000	10,000	56,000

¹ The approximated coach width and length does not include side-view mirrors and rear ladders.

² On tag axle coaches, measurement is taken from the center of the steer axle to the centerline between the drive and tag axle.

³ 37 BH's overall height increased from 12' 7" to 13' 3" due to new XSH Chassis.

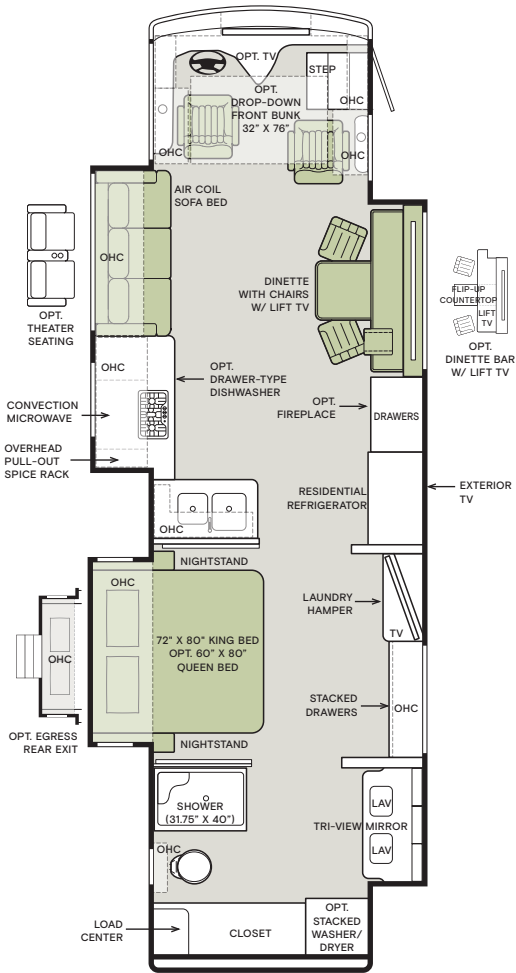
⁴ Square footage was calculated with the slide-outs fully extended.

⁵ Maximum trailer weight is dependent on the loading and towing variables which include the

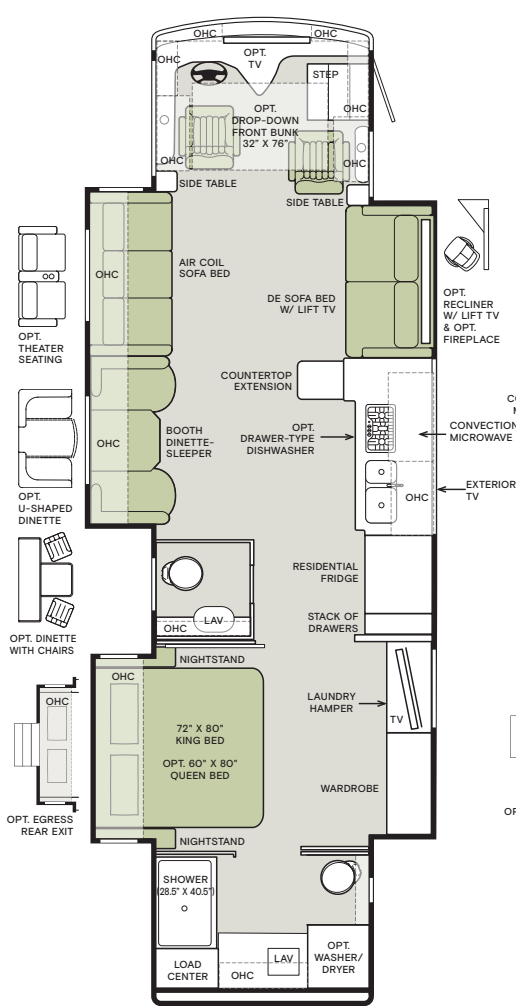
GVWR, adequate trailer brakes.

GAWR, and GCWR, as well as

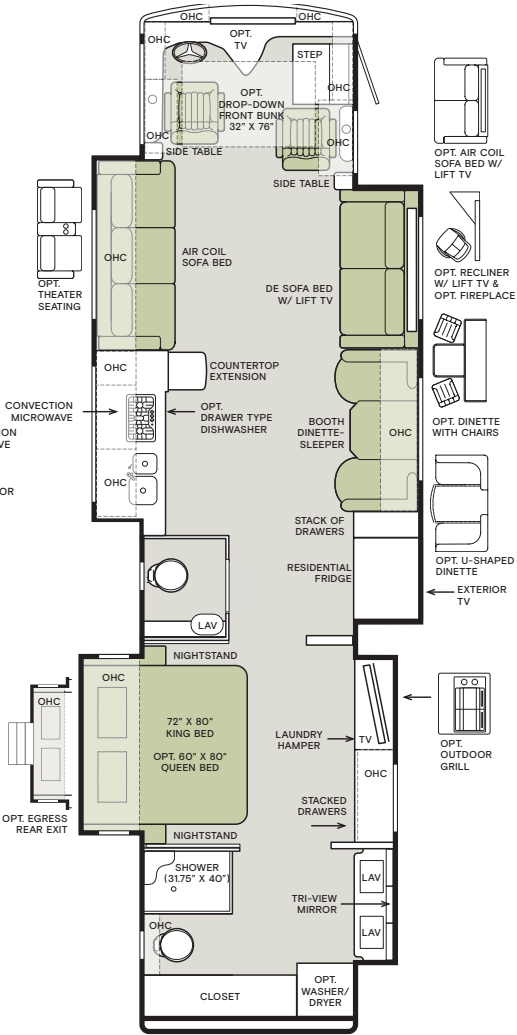
35 CH



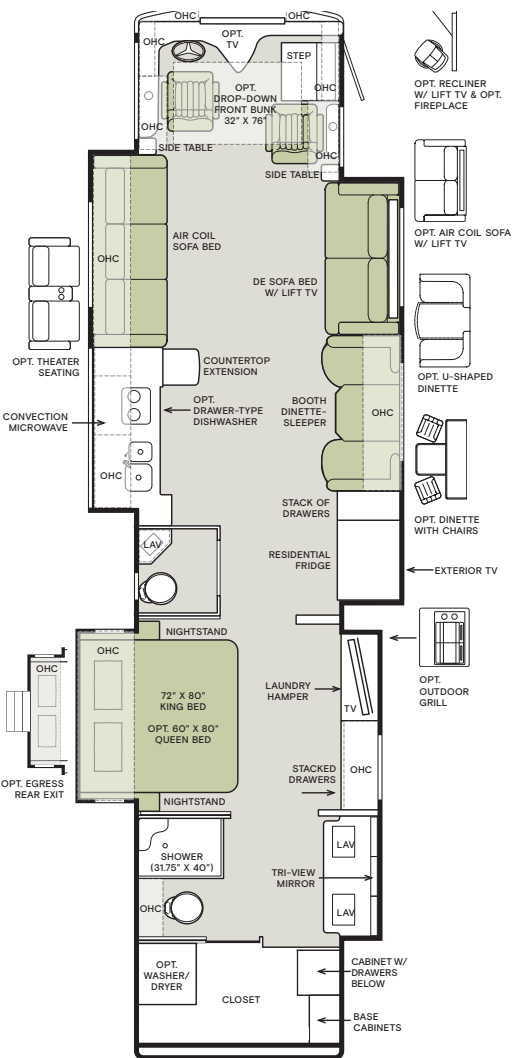
37 BH



40 IH



44 OH



If optional furniture combinations are selected, window locations may vary from diagram shown. All options may not be available in every model. Because of progressive improvements and specifications, standard and optional equipment are subject to change without notice or obligation. For a complete and up-to-date list of available options and specifications, visit tiffinmotorhomes.com.

Interior Décor

Make your experience on the road all your own. Express yourself by choosing interior appointments such as cabinet finishes, flooring, and décor packages for every part of your motorhome. In the 2026 Phaeton, you'll be able to travel in style no matter where you go.



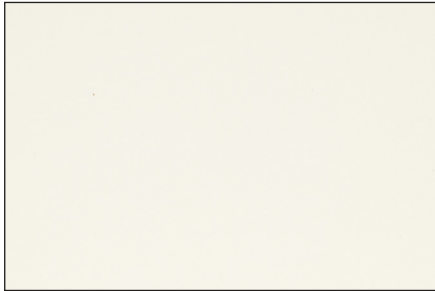
CABINETS



BLACK TRUFFLE



SANDSTONE



WHITE LINEN



PLATINUM

FLOORING



ARTICULO WHITE
Polished Porcelain Tile

(Recommended with Titanium
and Gelato Interior Decor)

NEW



TRACE CREME
Matte Porcelain Tile

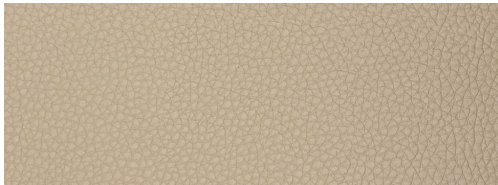
(Recommended with Mesa
Interior Decor)

NEW

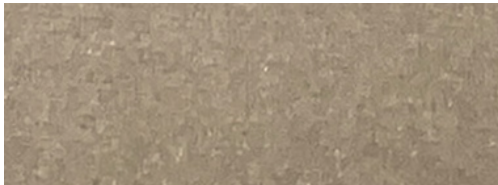
Because of progressive improvements and specifications, standard and optional equipment are subject to change without notice or obligation. For a complete and up-to-date list of available options and specifications, visit tiffinmotorhomes.com. Colors of interior decor options shown may vary from colors on actual product.

Interior Décor Packages

GELATO



BAMBOO LIFESTYLE LEATHER



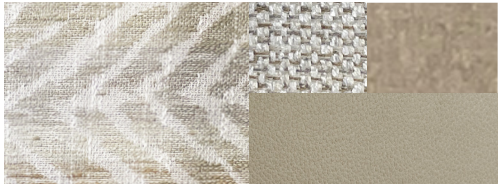
WINDOW TREATMENT



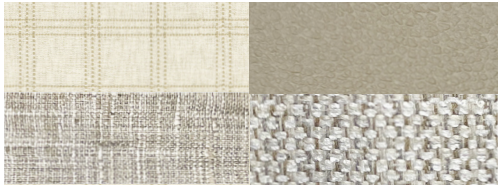
BACKSPLASH



COUNTERTOP

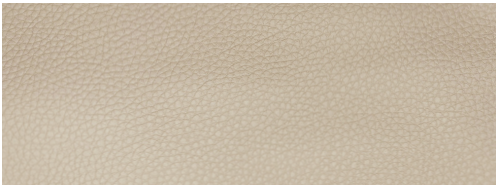


LIVING ROOM

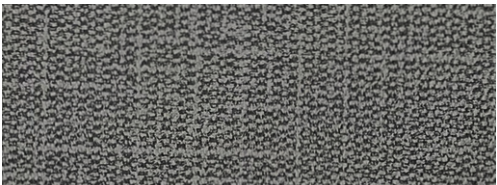


MASTER SUITE

TITANIUM



RICE WINE LIFESTYLE LEATHER



WINDOW TREATMENT



BACKSPLASH



COUNTERTOP

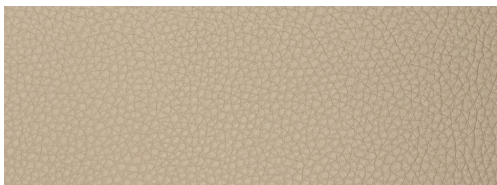


LIVING ROOM



MASTER SUITE

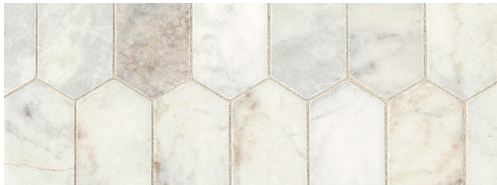
MESA



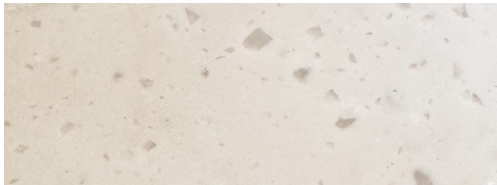
BAMBOO LIFESTYLE LEATHER



WINDOW TREATMENT



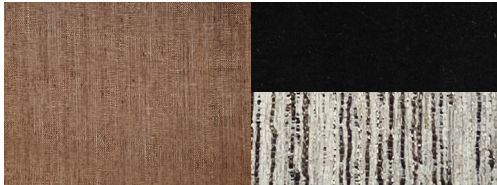
BACKSPLASH



COUNTERTOP



LIVING ROOM



MASTER SUITE

1

YEAR OR 12,000 MILES
LIMITED WARRANTY

3

YEAR DELAMINATION
LIMITED WARRANTY WITH
NO MILEAGE LIMITATION

5

YEAR CONSTRUCTION
LIMITED WARRANTY WITH
NO MILEAGE LIMITATION

1

YEAR COACH
ROADSIDE SERVICE

∞

ONGOING
CUSTOMER SUPPORT

FOR SALES CALL 256-356-8661 AND PARTS & SERVICE CALL 256-356-0261 OR VISIT TIFFINMOTORHOMES.COM

105 2ND ST NW RED BAY, AL 35582 [f](#) [i](#)

Colton RV & Marine
3122 Niagara Falls Blvd
North Tonawanda, NY 14120
(716) 694-0188
www.ColtonRV.com

Colton RV & Marine
3443 Southwestern Blvd.
Orchard Park, NY 14127
(716) 957-3250
www.Coltonrv.com



TIFFIN
MOTORHOMES

All trademarks and logos are owned or used under license by Tiffin Motor Homes, Inc. and include, but are not limited to: TIFFIN®, MANY ADVENTURES. ONE DREAM™, ALLEGRO®, ALLEGRO BREEZE®, ALLEGRO RED®, PHAETON®, ALLEGRO BUS®, ZEPHYR®, WAYFARER®, ROUGHING IT SMOOTHLY®, OPEN ROAD®, BYWAY™, and associated logos and emblems. Unauthorized use of any trademark of Tiffin Motor Homes, Inc. is strictly prohibited.

© Copyright 2024 Tiffin Motor Homes, Inc.

For all information concerning the limited warranty provided by Tiffin, please refer to the full written limited warranty set forth on the Tiffin website or held by our authorized dealerships.
Please note, some interior furnishings not included. Revised: 5/17/24