



WESTERN EDITION

THE FIRST NAME IN CAMPING.  
THE TRUSTED NAME IN RVs.

Colton RV  
North Tonawanda, NY 14120  
(716) 694-0188  
(800) 628-4889  
[www.ColtonRV.com](http://www.ColtonRV.com)



**Dutchmen®**

Legendary Innovation. Trailblazing Value.

INCLUDING THE COLEMAN  
**LANTERN LT**



# DISCOVER

THE COLEMAN LANTERN



**Coleman's Lantern Series** features spacious floorplans and one of the longest lists of amenities in its class. Combining old-world craftsmanship with over-the-top conveniences, like a power awning with LED lights, standard front and rear jacks, and upgraded seamless kitchen counter tops, your family will love everything the Coleman Lantern offers to help you get away from it all.

NORTH AMERICA'S  
**TRUSTED**  
NAME IN RVS



COLEMAN LANTERN 262BH



**Standard in Every Coleman Lantern:**



Sleeps  
up to 10



Solid Surface  
Countertops



Prepped  
WIFI W/ 4G LTE





COLEMAN LANTERN 264RL



COLEMAN LANTERN 262BH

## Interior Décor



LAKESIDE



IRONWOOD

## EXPAND YOUR HORIZONS

Space. It's not just what you'll find outside your Coleman Lantern. It's what you can expect from each one of these functional, feature-filled interiors. Holding the essentials you've come to expect from the trusted name in camping, these Lanterns take exploring America's roadways into the modern age.

1. MEDICINE CABINET WITH MIRROR
2. STAINLESS-STEEL APPLIANCES
3. SWIVEL ROCKERS (MODEL SPECIFIC)
4. RESIDENTIAL GRADE VINYL FLOORING
5. DINETTE WITH STORAGE
6. UPGRADED REST EASY MATTRESS



# EXPLORE

THE COLEMAN LANTERN



## Enhanced Storage Features



**For more than 100 years,** millions of people have trusted the Coleman name to help them thrive in the great outdoors. These all-new Coleman RVs deliver on that same reputation, packing more camping conveniences into one value-packed product! With multiple floorplans to choose from and a number of residential-style features throughout, the campground awaits you and your Coleman RV.



# Coleman Lantern Premium Features



## Powered Stabilizer Jacks & Power Tongue Jack

The Lantern's available powered stabilizer jacks and power tongue jack make setting up at your next campground easier than ever before. Which means, you'll have more time for fun and relaxation.



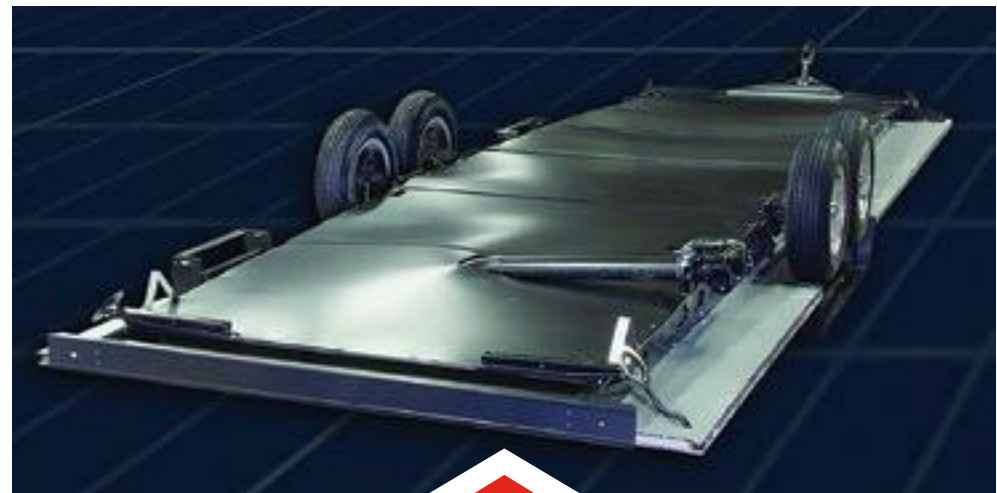
## Easy-Access USB Outlets

The Lantern meets the needs of modern travelers with up to 10 USB outlets located throughout the RV. Now, you're never too far from a full charge for your phone, laptop, or any other one of your powered devices.



## Extended Stay holding Tank Capacities

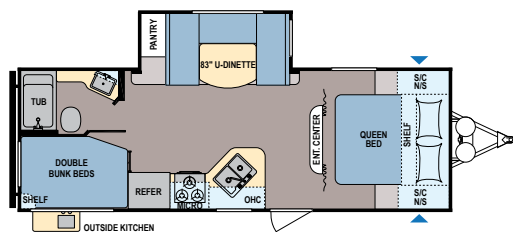
Everyone knows that Coleman stands for camping. And, what better way to keep travelers in the heart of the wild than with extended stay holding tank capacities—the largest available in its class.



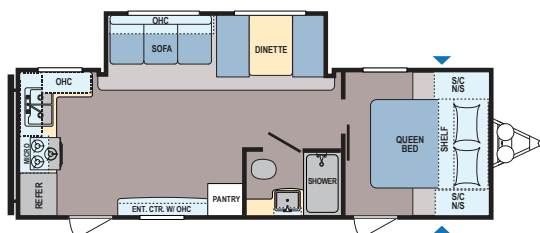
## Fully Insulated and Enclosed Underbelly

Vital functions are kept out of the elements, which helps ensure critical lines don't freeze and that harsh roads don't damage sensitive systems. Plus, this extra protection means you can travel further into the year.

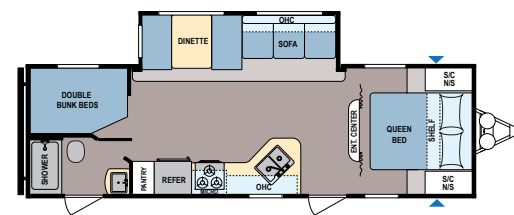
# Coleman Lantern Floorplans



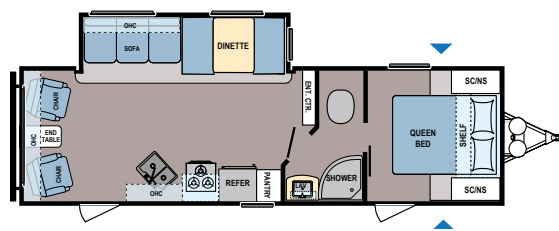
**LANTERN | 244BHWE | Sleeps 6-8**  
Ext. Length: 27' 7" Ext. Height: 11' 1" Weight: 5,500 lbs.



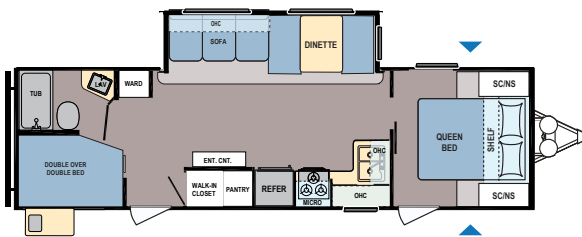
**LANTERN | 245RKWE | Sleeps 4-6**  
Ext. Length: 28' 11" Ext. Height: 11' 1" Weight: 5,740 lbs.



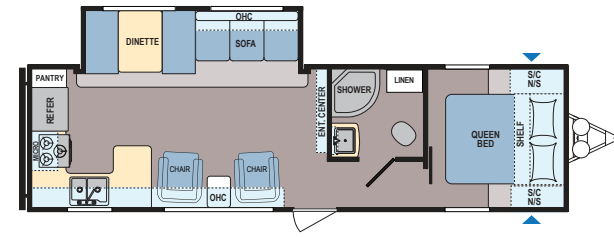
**LANTERN | 263BHWE | Sleeps 6-8**  
Ext. Length: 30' 7" Ext. Height: 11' 1" Weight: 5,871 lbs.



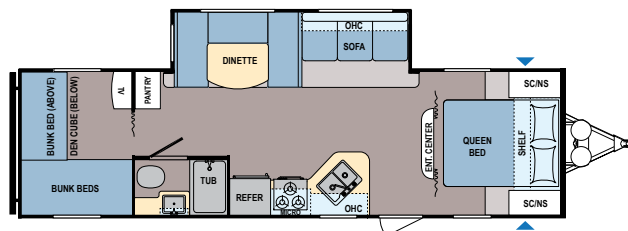
**LANTERN | 264RLWE | Sleeps 4-6**  
Ext. Length: 30' 11" Ext. Height: 11' 3" Weight: TBD



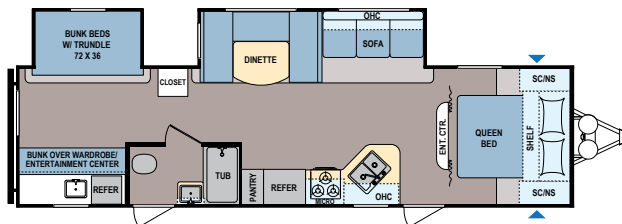
**LANTERN | 285BHWE | Sleeps 8-10**  
Ext. Length: 32' 9" Ext. Height: 11' 2" Weight: 6,538 lbs.



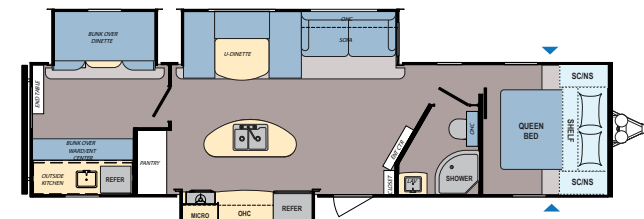
**LANTERN | 286RKWE | Sleeps 4-6**  
Ext. Length: 32' 11" Ext. Height: 11' 3" Weight: 6,289 lbs.



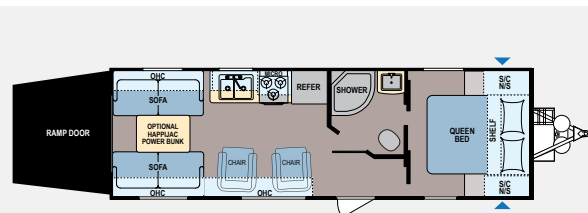
**LANTERN | 295QBWE | Sleeps 8-9**  
Ext. Length: 32' 8" Ext. Height: 11' 4" Weight: 6,112 lbs.



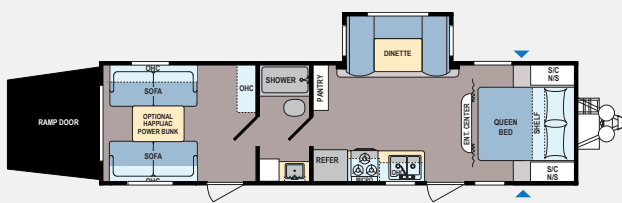
**LANTERN | 314BH\*\* | Sleeps 7-10**  
Ext. Length: 34' 9" Ext. Height: 11' 6" Weight: 7,400 lbs.



**LANTERN | 337BH\*\* | Sleeps 7-10**  
Ext. Length: 37' 11" Ext. Height: 11' 4" Weight: 8,421 lbs.



**LANTERN | 250TQ\*\* | Sleeps 4-6**  
Ext. Length: 29' 7" Ext. Height: 11' 5" Weight: 5,569 lbs.



**LANTERN | 300TQ\*\* | Sleeps 6-8**  
Ext. Length: 34' 10" Ext. Height: 12' 4" Weight: 6,817 lbs.

**DISCLAIMER:** Product information is as accurate as possible as of the brochure publication date. All features, floorplans and specifications in this brochure are subject to change without notice. Please consult Dutchmen's website at [www.Dutchmen.com](http://www.Dutchmen.com) for current product information and specifications. Tow Vehicle Disclaimer. **CAUTION:** Owners of Dutchmen recreational vehicles are solely responsible for the selection and proper use of tow vehicles. All customers should consult with a motor vehicle manufacturer or their dealer concerning the purchase and use of suitable tow vehicles for Dutchmen products. Dutchmen disclaims any liability or damages suffered as a result of the selection, operation, use or misuse of a tow vehicle. DUTCHMEN'S LIMITED WARRANTY DOES NOT COVER DAMAGE TO THE RECREATIONAL VEHICLE OR THE TOW VEHICLE AS A RESULT OF THE SELECTION, OPERATION, USE OR MISUSE OF THE TOW VEHICLE. REFERENCE DUTCHMEN MANUFACTURING OWNERS MANUAL FOR LIMITED WARRANTY DETAILS.

\*\*Eastern Region: Model produced in Indiana

# Coleman Lantern Standards and Options

## COLEMAN LANTERN PACKAGE

120V Exterior Outlet
12V USB Power Outlet in Bedroom
12V USB Power Outlets at Bunk Beds
13,500-BTU Air Conditioner
2 Swivel Rockers (Model Specific)
28" Entrance Door(s)
30 AMP Power Cord
6 Cubic Foot Double Door Refrigerator w/Black Insert
6 Gallon Gas DSI Water Heater w/Bypass Kit
Awning
Backers for Rear Ladder
Backup Camera Prep
Bedroom TV Hookup
Bedroom TV Location – Backers for TV Mount
Cable/Satellite TV Hookup
Diamond Etched Rock Guard
Dinette Storage Compartment
Dual 20# LP Bottles w/ABS Cover
Easy Lube Axles
Entry Handle(s)
Everwear Luxury Furniture
Flush Mounted 3 Burner Cooktop w/Glass Top

Folding Entry Steps (Double/Triple - FP Specific)
Foot Pedal Flush Toilet
Front and Rear Jacks
Glass Shower Door (FP Specific)
Hard Valances in Living Room and Mater Bedroom
Interior Power Command Center
Large Storage Compartment
Magnetic Door Catches
Medicine Cabinet w/Mirror
Mini Blind Shades Throughout
Power Bath Fan
Radial Tires w/Nitro Fill
Range Hood w/12V Light and Exhaust Fan
Residential Grade Vinyl Flooring
Shower Curtain Rod (Tub Models)
Smooth Finish Entry/Baggage Doors
Solar Power Charging Connection
Solid State Converter w/Built-in Battery Charger
Stainless-Steel High-Rise Kitchen Faucet
Stainless Steel Microwave
Stereo AM/FM/CD/AUX/Bluetooth
Thermoformed Kitchen Countertop
Tinted Safety Glass Windows
Under Bed Storage

Undermounted Large Kitchen Sink
Upgraded Kitchen Backsplash
Upgraded Rest Easy Mattress

## LANTERN SUT MODELS

1,600-lb. Rated Rear Ramp Door
2,500-lb. Rated Recessed D-Rings
Maximized Storage Flat Floors
Opposing Rear Fold-Away Sofas

## YUKON PACKAGE

Enclosed and Insulated Fresh Water Tank
Exterior Speakers
Oven w/3-Burner Range
Power Awning w/LED Patio Light

## OPTIONAL EQUIPMENT

Aluminum Rims
HappiJac Power Bunk (250 & 300 Only)
15,000-BTU A/C IPO 13.5 (N/A 192)
CSA Upfit and Seal

Spare Tire and Carrier
------------------------

## MANDATORY OPTIONS

Black Tank Flush
Coleman Lantern Package
Enclosed Underbelly
Exterior Shower
Get Outdoors Package
Yukon Package

## OUTDOORS PACKAGE

4G LTE Connectivity Ready
7.0 Cubic Foot Double Door Refrigerator
Easy Store Storage
Pleated Night Shades
Power Stabilizer Jacks
Power Tongue Jack
Sure Step Main Entry Step
Upgraded Entry Door
Upgraded Power Awning
USB Power Supply Throughout (10 outlets)
WIFI Connectivity

# Coleman Lantern Specifications

WEIGHTS (LBS.)					TANKS (GALS.)			DIMENSIONS	
MODEL	FLOORPLAN	SHIPPING WEIGHT (AVERAGE)	DRY HITCH WEIGHT	CARRYING CAPACITY	FRESH WATER CAPACITY	WASTE WATER CAPACITY	GREY WATER CAPACITY	EXTERIOR LENGTH DOES NOT INCLUDE THE TIRE CARRIER OR LADDER	EXTERIOR HEIGHT TOP OF A/C
LANTERN	244BHWE	5,500	676	2,100	60	38	38	27' 7"	11' 1"
LANTERN	245RKWE	5,740	790	1,860	60	38	76	28' 11"	11' 1"
LANTERN	250TQ	5,569	909	4,111	60	42	42	29' 7"	11' 5"
LANTERN	263BHWE	5,871	819	1,729	60	38	38	30' 7"	11' 1"
LANTERN	264RLWE	6,120	760	1,348	60	38	38	30' 11"	11' 3"
LANTERN	285BHWE	6,538	884	3,142	60	38	38	32' 9"	11' 2"
LANTERN	286RKWE	6,289	645	3,391	60	38	38	32' 11"	11' 3"
LANTERN	295QBWE	6,112	799	3,568	60	38	38	32' 8"	11' 4"
LANTERN	300TQ	6,817	1,003	2,863	60	42	42	34' 10"	12' 4"
LANTERN	314BH	7,400	773	2,280	60	42	42	34' 9"	11' 6"
LANTERN	337BH	8,421	1,083	2,755	60	42	84	37' 11"	11' 4"

\*Length is defined as the distance from the centerline of hitch pin/coupler to rear bumper of trailer. \*\*Our weights represent how most units are built, inclusive of many commonly-ordered options.  
\*\*\*Fresh water capacity includes water heater capacity.



# THE COLEMAN **LANTERN LT**

Whether you're a couple wanting to enjoy the great outdoors or a young family looking to create your own camping traditions, **Lantern LT** is a series that will appeal to you. With the wide array of features and upgraded interior amenities, you are sure to see why Coleman is one of the fastest-growing brands in the market.



COLEMAN LANTERN LT 18RB

## Standard in Every Coleman Lantern LT:



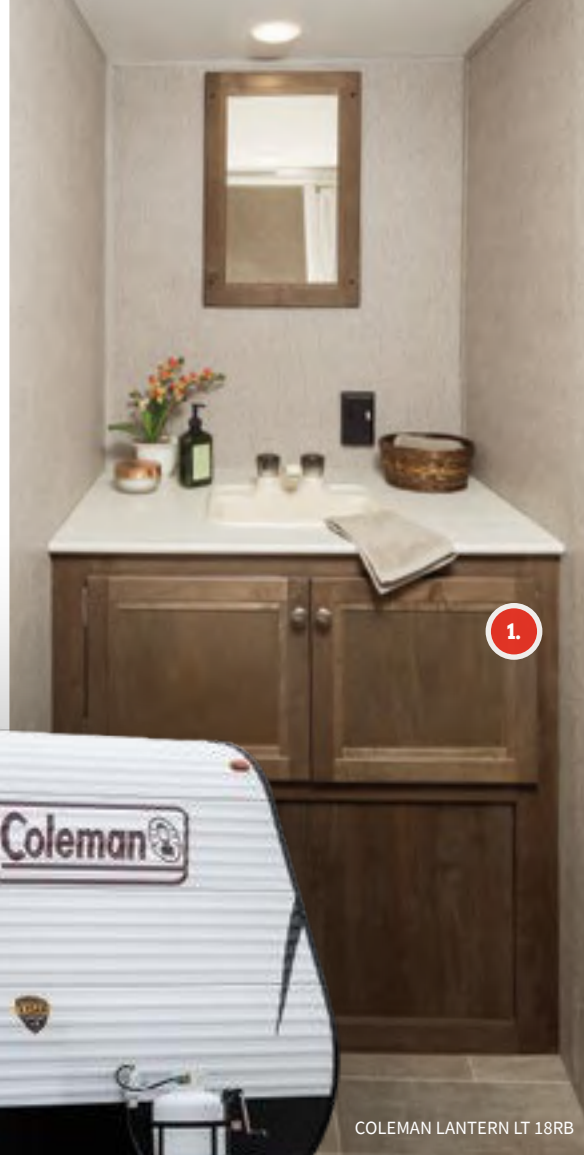
Sleeps  
up to 10



Solid Surface  
Countertops



Prepped  
WIFI W/ 4G LTE



COLEMAN LANTERN LT 18RB

1. PRIVATE BATH WITH AMPLE STORAGE
2. RESIDENTIAL GRADE VINYL FLOORING
3. LARGE 60" X 80" QUEEN BED
4. FULL EXTENSION DRAWERS AND SPICE RACK
5. MICROWAVE AND 2-BURNER COOKTOP





## WHERE TO NEXT?

No matter where your travels take you, the Lantern LT is designed to cater to every campground experience. Here, you'll find necessities like a 6-gallon gas/water heater, a 20-lb. LP bottle, and even a solar power charging station. Inside, everything you need is onboard, including a 2-burner cooktop, refrigerator, stereo system, and more.

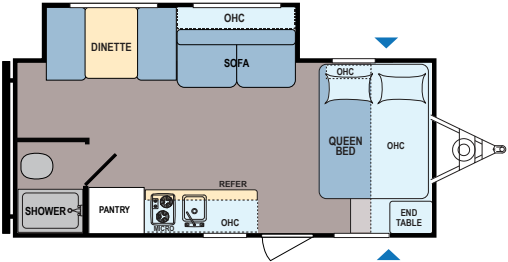


COLEMAN LANTERN LT 18RB

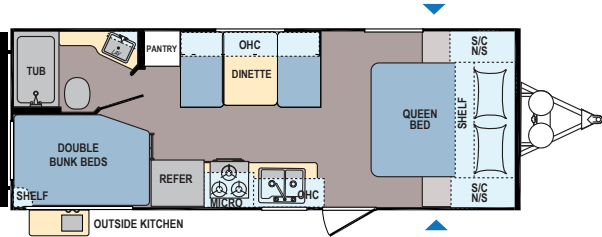


COLEMAN LANTERN LT 18RB

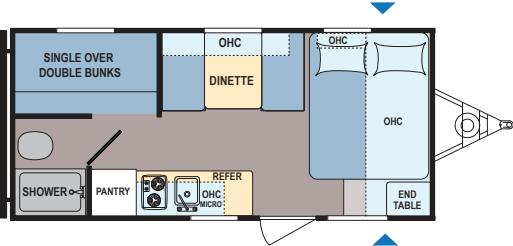
THE FIRST NAME  
IN CAMPING.  
THE TRUSTED  
NAME IN RVs.



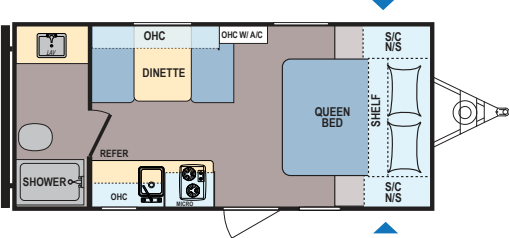
**LANTERN LT | 18FQ\*\* | Sleeps 4-6**  
Ext. Length: 22' 9" Ext. Height: 10' 1" Weight: 3,980 lbs.



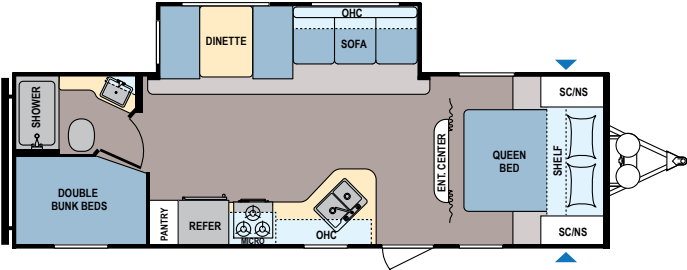
**LANTERN LT | 215BHWE | Sleeps 5-7**  
Ext. Length: 25' 11" Ext. Height: 10' 7" Weight: 4,468 lbs.



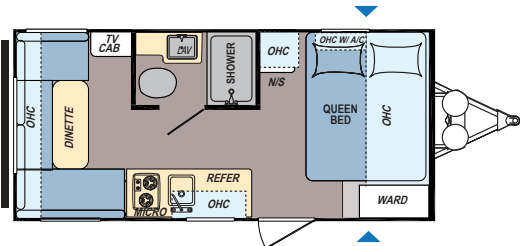
**LANTERN LT | 17FQWE | Sleeps 4-6**  
Ext. Length: 21' 5" Ext. Height: 8' 8" Weight: 3,211 lbs.



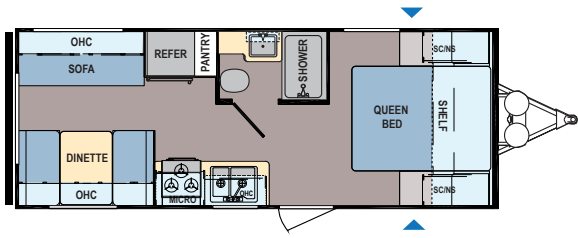
**LANTERN LT | 18RBWE | Sleeps 3-4**  
Ext. Length: 21' 5" Ext. Height: 8' 11" Weight: 3,063 lbs.



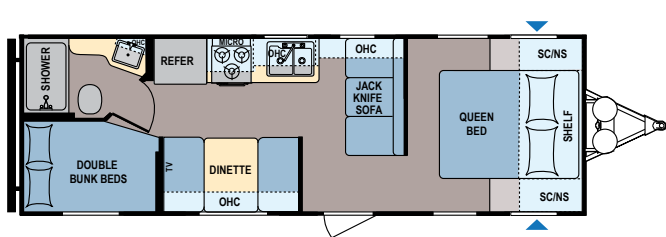
**LANTERN LT | 262BHWE | Sleeps 8-10**  
Ext. Length: 30' 7" Ext. Height: 11' 4" Weight: 5,880 lbs.



**LANTERN LT | 17RDWE | Sleeps 2-4**  
Ext. Length: 21' 2" Ext. Height: 8' 11" Weight: 3,159 lbs.



**LANTERN LT | 202RDWE | Sleeps 4-6**  
Ext. Length: 24' 11" Ext. Height: 10' 10" Weight: 4,237 lbs.



**LANTERN LT | 274BHWE | Sleeps 7-8**  
Ext. Length: 28' 7" Ext. Height: 10' 4" Weight: 4,669 lbs.

\*\*Eastern Region: Model produced in Indiana

**DISCLAIMER:** Product information is as accurate as possible as of the brochure publication date. All features, floorplans and specifications in this brochure are subject to change without notice. Please consult Dutchmen’s website at [www.Dutchmen.com](http://www.Dutchmen.com) for current product information and specifications. Tow Vehicle Disclaimer. **CAUTION:** Owners of Dutchmen recreational vehicles are solely responsible for the selection and proper use of tow vehicles. All customers should consult with a motor vehicle manufacturer or their dealer concerning the purchase and use of suitable tow vehicles for Dutchmen products. Dutchmen disclaims any liability or damages suffered as a result of the selection, operation, use or misuse of a tow vehicle. DUTCHMEN’S LIMITED WARRANTY DOES NOT COVER DAMAGE TO THE RECREATIONAL VEHICLE OR THE TOW VEHICLE AS A RESULT OF THE SELECTION, OPERATION, USE OR MISUSE OF THE TOW VEHICLE. REFERENCE DUTCHMEN MANUFACTURING OWNERS MANUAL FOR LIMITED WARRANTY DETAILS.



# Coleman Lantern LT Standards and Options

## COLEMAN LANTERN LT PACKAGE

2-Burner Cooktop (Select Models)
20# LP Bottle
28" Entrance Door Without Window
30 Amp Power Cord
6 Gallon Gas/Water Heater
Awning
Backup Camera Prep
Bath/Galley Fan
Diamond Etched Rock Guard
Easy Lube Axles
Entry Handle
Exterior Outlet
Foot Pedal Flush Toilet
Full Extension Drawer Guides Throughout
Furnace
Hard Valance Living Area

Interior Speakers
Living Area Exhaust Fan (Select Models)
Microwave
Mini Blinds Throughout
Porch Light w/Switch on Light
Radial Tires
Rear Jacks
Residential Grade Vinyl Flooring
Shower Curtain
Silver Spoke Rims
Single Door Refrigerator (select models)
Single Entry Step
Skylight in Bath
Solar Power Charging Connection
Solid State Converter w/Built-in Battery Charger
Spare Tire
Stereo AM/FM/MP3/SC/AUX
Tinted Safety Glass Windows

Water Heater Bypass Kit
-------------------------

## MANDATORY OPTIONS

Coleman Lantern LT Package
Technology Package
Enclosed Underbelly (202RDWE, 215BHWE, 262BHWE, 274BHWE only)

## LANTERN LT TECHNOLOGY PACKAGE

Backup Camera Prep
Bluetooth Enhanced Stereo w/DVD
Power Awning w/LED Patio Light
Solar Charge Connection

## LT DELUXE PACKAGE

(202RDWE, 215BHWE, 262BHWE, 274BHWE only)
3-Burner Range Top
6.0 Cubic Foot Double Door Refrigerator

Exterior Speakers
High Capacity Furnace

## OUTDOORS LT PACKAGE

(202RDWE, 215BHWE, 262BHWE, 274BHWE only)

4G LTE Connectivity Ready
7.0 Cubic Foot Double Door Refrigerator
Easy Store Storage
Flush Mount Range w/Glass Cover
Pleated Night Shades
Pots and Pans Drawer
Power Stabilizer Jacks
Power Tongue Jack
Sure Step Main Entry Step
Upgraded Entry Door
Upgraded Power Awning
USB Power Supply Throughout
WIFI Connectivity

## Coleman Lantern Specifications

WEIGHTS (LBS.)					TANKS (GALS.)			DIMENSIONS	
MODEL	FLOORPLAN	SHIPPING WEIGHT (AVERAGE)	DRY HITCH WEIGHT	CARRYING CAPACITY	FRESH WATER CAPACITY	WASTE WATER CAPACITY	GREY WATER CAPACITY	EXTERIOR LENGTH DOES NOT INCLUDE THE TIRE CARRIER OR LADDER	EXTERIOR HEIGHT TOP OF A/C
LANTERN LT	17FQWE	3,211	373	639	27	28	28	21' 5"	8' 8"
LANTERN LT	17RDWE	3,159	439	691	27	28	28	21' 2"	8' 11"
LANTERN LT	18FQ	3,980	458	860	27	28	28	22' 9"	10' 1"
LANTERN LT	18RBWE	3,063	361	787	27	28	28	21' 5"	8' 11"
LANTERN LT	202RDWE	4,237	422	3,363	52	38	38	24' 11"	11' 0"
LANTERN LT	215BHWE	4,468	445	3,132	52	38	38	25' 11"	10' 10"
LANTERN LT	262BHWE	5,880	785	1,720	52	38	38	30' 7"	11' 4"
LANTERN LT	274BHWE	4,669	607	2,931	52	38	38	28' 7"	10' 4"

## Interior Décor



\*Length is defined as the distance from the centerline of hitch pin/coupler to rear bumper of trailer.  
 \*\*Our weights represent how most units are built, inclusive of many commonly-ordered options.  
 \*\*\*Fresh water capacity includes water heater capacity.



2019

# COLEMAN LANTERN SERIES

WESTERN EDITION

Since 1900, the **Coleman® Company, Inc.** has led the world in manufacturing of camping gear and outdoor equipment. From the renowned Coleman lantern to stoves, tents, sleeping bags and coolers, Coleman's reputation for high-quality camping products is legendary.

Whether your outdoor activities involve hiking, camping, fishing, hunting, boating, swimming, tailgating or simply relaxing, Coleman offers everything you need to satisfy your family's dreams.



**LA MESA RV**  
EXPERIENCE LIFE  
[www.lamesarv.com](http://www.lamesarv.com)  
**800-496-8778**

*From giving advice to servicing products, we consider our loyal dealers the best resource for learning about Dutchmen products.*

Coleman's floorplans are not only loaded with added value and innovative features, they're designed to help your family get the most out of every camping experience.

After all, Coleman is Camping!

We invite you to visit your nearest Coleman RV dealer today, and find out for yourself why Coleman is the most respected name in outdoor recreation.



**Dutchmen®**

*Legendary Innovation. Trailblazing Value.*

Manufactured under license by:  
Dutchmen Manufacturing, Inc.  
PO Box 2000 • 2164 Caragana Court  
Goshen, Indiana 46527  
(574) 537-0600



To check for recent updates to floorplans and specifications. **Scan this QR CODE** with your favorite QR Reader application.



## 100% PRE-DELIVERY INSPECTION

At Dutchmen, quality is our standard. Every single Dutchmen RV that comes off the line receives its own pre-delivery inspection. Typically, a competitor performs random inspections, meaning you won't find this commitment to quality anywhere else.



## THE INDUSTRY'S BEST RV WARRANTY



With this industry-best warranty, we take the guessing game out of what is and isn't covered. So, that means you don't have to wrangle over the details, because we deliver value by clearly outlining the major components we back during the first three years.



## THE LEADER IN PARTS AND SERVICE

Replacement parts. Routine checkups. Expert advice. You name it and we've got it covered. When only the best RV services will suffice, our industry-leading parts and service department is ready to help you get back on the road—and stay there longer than ever before.

PO BOX 2000 • 2164 Caragana Court • Goshen, Indiana 46527 • Sales: 574.537.0600 • [www.dutchmen.com](http://www.dutchmen.com)

DISCLAIMER: Product information is as accurate as possible as of the date of publication of this brochure. Features, floorplans and specifications are subject to change without notice. Please consult our website for more current product information and specifications. Coleman®,  and  are trademarks of The Coleman® Company, Inc., and are used under license. ©2019 Dutchmen. 19-Coleman Light Series West - Printed in U.S.A.

[www.dutchmen.com](http://www.dutchmen.com)

Visit us online to see all of the Dutchmen brands, innovative models and spacious floorplans.