

SIERRA

SIERRA



LUXURY FIFTH WHEELS



A man and a woman are sitting on a rocky ledge, looking out over a vast, layered canyon. The man is on the left, wearing a grey hoodie and a patterned scarf. The woman is on the right, wearing a red sweater and dark pants. The canyon walls are composed of reddish-brown rock with visible horizontal strata. Sparse green shrubs are scattered across the canyon floor and on the cliffs. The sky is a clear, pale blue.

"IN WILDERNESS LIES THE HOPE OF THE WORLD" -John Muir

DARE TO COMPARE

SIERRA'S TOP 10 INTERIOR FEATURES

- 1 All Interior Lights are LED (cooler, brighter & less electrical draw)
- 2 Livingstone Solid Surface Kitchen Countertops (beautiful & durable)
- 3 20 cf. stainless steel refrigerator (with Ultimate Package) includes 1,000 watt inverter and battery disconnect and it has an ice maker)
- 4 An "EZ-Breeze" Fan is in every main bathroom along with a "Swirl-Flush" porcelain toilet, heat and A/C vents and a night light.
- 5 "Soft Close" Full Extension cabinet drawer runners (higher end drawer guides just like home)
- 6 "Stone-Cast" Kitchen Sink (can withstand up to 500 degrees, scratches can be buffed out & it will not rust like the Cheap Import stainless steel sinks)
- 7 Serta Memory Foam Mattress (conforms to your body)
- 8 LED TVs, a Sound Bar & DVD Player
- 9 Dual Zoned, Quiet Cool Air Conditioning (comfort throughout the camper)
- 10 "Flush Floor" Hydraulic Slides in the main living areas (this is huge, hydraulic slides are faster and trouble free.

SIERRA'S TOP 10 EXTERIOR FEATURES

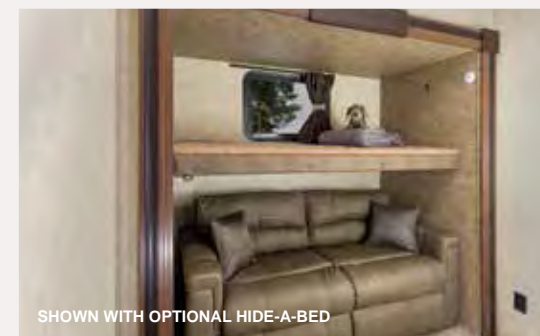
- 1 32" x 76" Entry Door (the largest in the industry)
- 2 Screen Door is recessed for 1/8" Plexiglas insert
- 3 Friction Hinge Entry door, no plastic hold-backs to break. Door can withstand up to 25 MPH wind gusts when open.
- 4 Exterior Spray Port with 25' coiled hose & spray nozzle on door side of camper
- 5 A&E 2100 Series Power Awning with LED the length of the awning (it's the fastest extend & retract available)
- 6 Dexter 7,000 lb., 8 Lug Axles with "Nev-r-Adjust" brakes
- 7 Exterior Speakers are mounted low (the higher the speaker, the higher the volume has to be to hear it)
- 8 A Metal Band between the exterior fiberglass and the bottom skirt is mechanically fastened (unlike our competitors that use a glued on rubber strip that mold can grow into)
- 9 Insulated luggage doors with Slam Latches on most doors
- 10 Laminated / Insulated Upper 5th Wheel Floor Deck (adding to the efficiency of the furnace & comfort in colder weather)

SIERRA





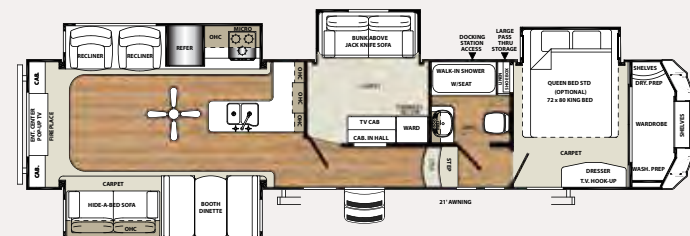
OPTIONAL TILE LOOK LINOLEUM



371REBH



PEBBLE INTERIOR

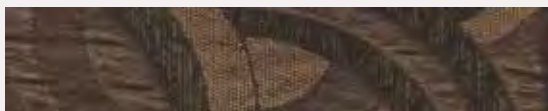


The **371REBH** offers the best of both worlds. With both a rear living and a bunkhouse fifth wheel wrapped up into one pleasing functional floorplan. It will be hard to find a floorplan that offers this much living space and the availability to give your guests or the kids their own bedroom. Also, this unique floorplan boasts a full walk in shower with seat and an optional king size memory foam mattress.

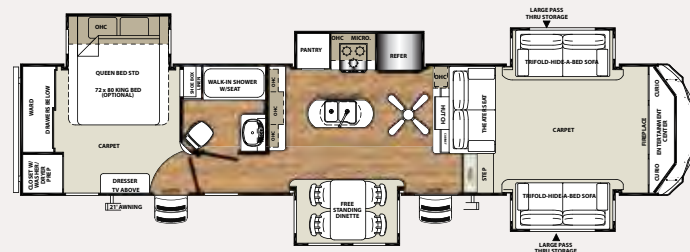




377FLIK



MERLOT INTERIOR



The 377 FLIK or front living, gives more than enough room in the upper deck to entertain. With two pull out hide-a-bed sofas and a theater seat, it has seating for the entire family to enjoy the 50" flatscreen TV. Also cooking a meal turns from a chore to a fun activity with a large island kitchen for food preparation, and full slide pantry to store all the essential ingredients.

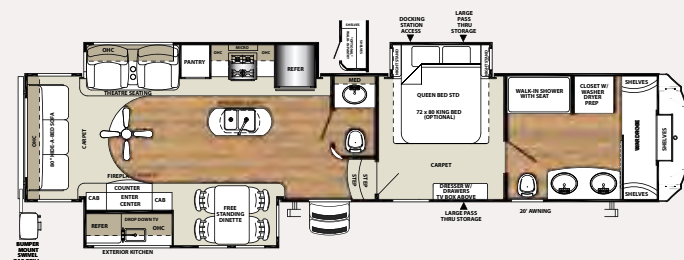




378FB



CARBON INTERIOR



The 378 FB offers one of the largest bathrooms in the industry. As you walk through the master bedroom you enter a bathroom that includes a full walk in shower with stool, his and her sinks, stackable washer and dryer closet, and a full wardrobe with shoe closet to hang all your camping apparel. Also note that there is an option to add a full walk in pantry on the main level in place of the half bathroom that comes standard. This unit also comes standard equipped with an outside kitchen which is essential for all outdoor activities.





381RBOK



MERLOT INTERIOR



The **381RBOK** is a one of a kind bunk house fifth wheel. This five slide fifth wheel maximizes square footage by offering two full size bathrooms with a tub for the kids. Not only is there an outside kitchen standard but it also offers a full wardrobe and four bunks including the trundle Teddy Bear mattress in the rear connecting to the second bathroom. Any family in need of sleeping space and two full bathrooms need to check out this "Beast of Bunks!"



High rise faucet with undermount sink and pull out sprayer.



The upgraded and intricately detailed slide-out fascia.



Optional theater seats in place of recliners.



Full extension, soft close ball bearing drawer guides.



The fireplace warms and is a great focal point for the living area.



SIERRA's control center allows you to monitor tanks and other systems quickly and easily.

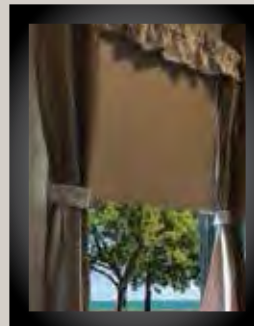
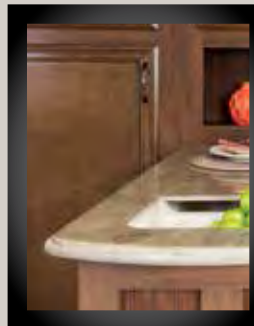


Serta™ Memory Foam mattress is a Forest River exclusive feature.



Flatscreen LED HDTV with premium soundbar and DVD player.

ULTIMATE PACKAGES • LIMITED TIME OFFER



- 20 CU. FT. STAINLESS STEEL FRENCH DOOR RESIDENTIAL REFER WITH 1,000 WATT INVERTER & BATTERY DISCONNECT
- PREMIUM SOLID SURFACE KITCHEN COUNTERTOPS
- WIDE STANCE HYDRAULIC LANDING GEAR

- ROLLER SHADES THROUGHOUT
- 32" BEDROOM TV WITH SWING ARM



The color matched fiberglass front cap features high definition graphics and LED safety lights.



Gel coated fiberglass protects from UV rays and prevents yellowing and cracking.



Large pass-thru storage area with Slam Lock baggage doors allows for extra storage underneath.



SIERRA's convenient outside lighted docking station.



2 quick connect spray ports (one on each side) are great for easy clean up.



Wide stance hydraulic landing gear.



Contemporary aluminum rims with E-rated radial tires. Most SIERRA's feature 7000 Lb. axles.



Heated and enclosed underbelly protects your coach and improved airflow allows for a sturdier ride.

GOURMET KITCHEN



THE SIERRA GOURMET KITCHEN INCLUDES A 20 CU. FT. STAINLESS STEEL FRENCH DOOR REFRIGERATOR WITH BOTTOM FREEZER, MICROWAVE AND RANGE.



Outside kitchen standard on the 343RSOK, 360PDEK, 365SAQB, 372LOK, 375RKs, 376BHOK, 378FB, 381RBOK, 387MKOK (outside kitchen setups vary per floorplan)

EXTERIOR FEATURES

- Color match high gloss gel-coated colored exterior fiberglass
- Painted two tone aerodynamic fiberglass front cap with improved turning radius
- Docking station: easy winterization, hot and cold spray port, black tank flush, pull valves for tanks
- Enclosed and heated dump valves
- Large tinted windows with 80/20 UV prohibitor
- Hickory Springs® radius triple steps with 9" riser (no pinched fingers)
- "One Touch" Dometic® electric awning with LED light strip
- 16" Radial tires-E Rated
- Automotive-style fender skirts
- Hitch light
- Exterior refrigerator (per floorplan)
- Porch light with interior switch
- 30 lb. double LP tanks with auto change over
- Roof ladder
- 2 exterior speakers
- Rain gutters with extra long drip spouts (prevents black streaking)
- Insulated heavy duty slam lock baggage doors
- Exterior foldable grab handle
- Unobstructed pass-through storage area with cable jacks and 110V outlet
- 2 spray ports with 25' hose (one on each side)
- Upgraded aluminum rims
- 7,000 Lb. axles
- Friction hinge entry door

INTERIOR FEATURES

- 84" interior height with 6'4" slide heights
- Stainless steel appliances
- Beauflor® rustic wood plank linoleum
- Decorative backsplash
- Four color coordinated interiors (Carbon, Merlot, Pebble, Beachwood)
- Soft close full extension drawer glides
- Stone cast under mounted kitchen sink
- Washer/Dryer prep
- Delight Maple hand crafted cabinetry with screwed lumber core stile construction
- LED lighting throughout
- Residential countertops
- Recessed residential lighting

- Colored shower surround with etched tile pattern
- Upgraded adjustable shower head with shelf
- Accent paneling in slideouts
- Accent lighting over dinette
- Walk-in shower with seat (most models)
- Mocha accent crown molding over kitchen cabinets
- Extra large picture windows throughout
- Vented side windows in slideouts
- TV antenna with booster
- Solid wood drawer fronts with birch sides
- Upgraded raised panel cabinet doors with designer rails
- Bedroom slideout fascia
- Serta® memory foam mattress
- Teddy Bear® bunk mats
- 40" flat screen LED HD TV
- Premium soundbar with DVD player
- Designer window treatment accented per decor
- 9 cu. ft. stainless refrigerator
- Ceiling fan
- Tri-fold hide-a-bed sofa
- Residential stain resistant carpet
- Center mounted A/C unit for even cooling
- Quilted bedspread
- Trash receptacle in kitchen

APPLIANCES/SYSTEMS

- Dual zone ducted Dometic® high performance 15K A/C with Quiet Cool (second A/C prep)
- 9 cu. ft. refrigerator
- Dual zone thermostat for living room and bedroom A/C
- Floor ducted 35,000 BTU furnace
- OTR stainless steel microwave
- Three burner high output range with 22" oven
- Interior monitor panel for holding tanks
- Flush floor hydraulic slideouts (per floorplan)
- Dual battery prep
- Satellite and cable hookup with RG-6 cable for high quality picture
- Porcelain foot flush toilets
- 10 Gal. DSI water heater
- 65 Amp converter
- EZ Breeze® power fan in bathrooms

CONSTRUCTION

- Welded aluminum-framed, vacuum bonded laminated superstructure
- Laminated and fully insulated bathroom floor deck
- 2" x 3" floor joists 12" on center
- 5/8" tongue & groove plywood floor decking
- 3/8" roof decking (full walk-on roof)
- Cambered powder coated frame with rust prohibitor
- Fully enclosed heated underbelly
- 5" truss roof rafters
- R-10E sidewall construction
- Laminated sidewalls
- Laminated slideout walls

POPULAR OPTIONS

- Roto Flex hitch pin
- Electric rear jacks
- Tri-fold hide-a-bed with hinged bunk overhead (bunk slides)
- Recliners IPO theater seating (where available)
- 6 point hydraulic leveling system
- King bed (N/A 381RBOK, 343RSOK, 387MKOK)
- Solid surface countertops in kitchen
- Free-standing dinette with 4 chairs (365SAQB, 371REBH, 372LOK)
- Party Lounge with footrest and hide-a-bed sofa (365SAQB, 371REBH)
- 12" full slide u-dinette (380BH5 only)
- Washer and dryer (per floorplan)
- Sofa IPO bottom bunk (per floorplan)
- Second air conditioner (bedroom)
- Fantastic fan with rain sensor (bunk room, kitchen, living room, bathroom, half bath)
- 12 Volt heated holding tanks
- Equaflex® equalizer system
- Party couch dinette (per floorplan)
- Beauflor® tile look linoleum
- Central vacuum
- R-38E insulation
- Quad entry steps
- Slide room awnings (all slides)
- Rear manual awning (360PDEK only)
- Screen room (360PDEK only)

POLAR TECH PACKAGE

- Thermal pane windows
- Heated holding tanks
- R-38E roof & all floors insulation

- 40K BTU furnace
- Double fiberglass insulation in roof & floor

FOR YOUR SAFETY

- Smoke alarm
- Fire extinguisher
- Breakaway switch (battery hook-up required)
- Dead-bolt lock on entry door
- LP/CO₂ gas detector
- Fire escape windows

ULTIMATE PACKAGE (limited time offer)

- Premium solid surface kitchen countertops
- Wide stance hydraulic landing gear
- 20 cu. ft. stainless French door residential refer w/1,000 watt inverter and battery disconnect
- Roller shades throughout
- 32" bedroom TV on swing arm

SIERRA SIGNATURE PACKAGE

- Aerodynamic two tone fiberglass painted front cap
- 9 cu. ft. stainless steel refrigerator
- Stainless appliance package
- Serta memory foam mattress
- OTR stainless steel microwave
- Decorative backsplash
- Soft close residential drawers
- Docking station
- High gloss color matched gel-coated fiberglass exterior
- 40" flat screen LED HD TV
- Premium sound bar with Sony DVD player
- EZ Breeze® power fan in bathroom(s)
- Tri-fold hide-a-bed
- "One Touch" Dometic electric awning with LED light strip
- LED interior lighting throughout
- Residential stain resistant carpet
- Slam lock baggage doors
- Quiet-cool air conditioner
- Wire and brace for 2nd A/C (ducted)
- Residential pullout kitchen faucet
- 10 Gal. G/E water heater w/DSI
- 16" Spare tire kit
- Aluminum wheels with 7,000 Lbs. axles
- Washer/dryer prep
- Water filter system
- Rustic wood Beauflor flooring



CARBON INTERIOR



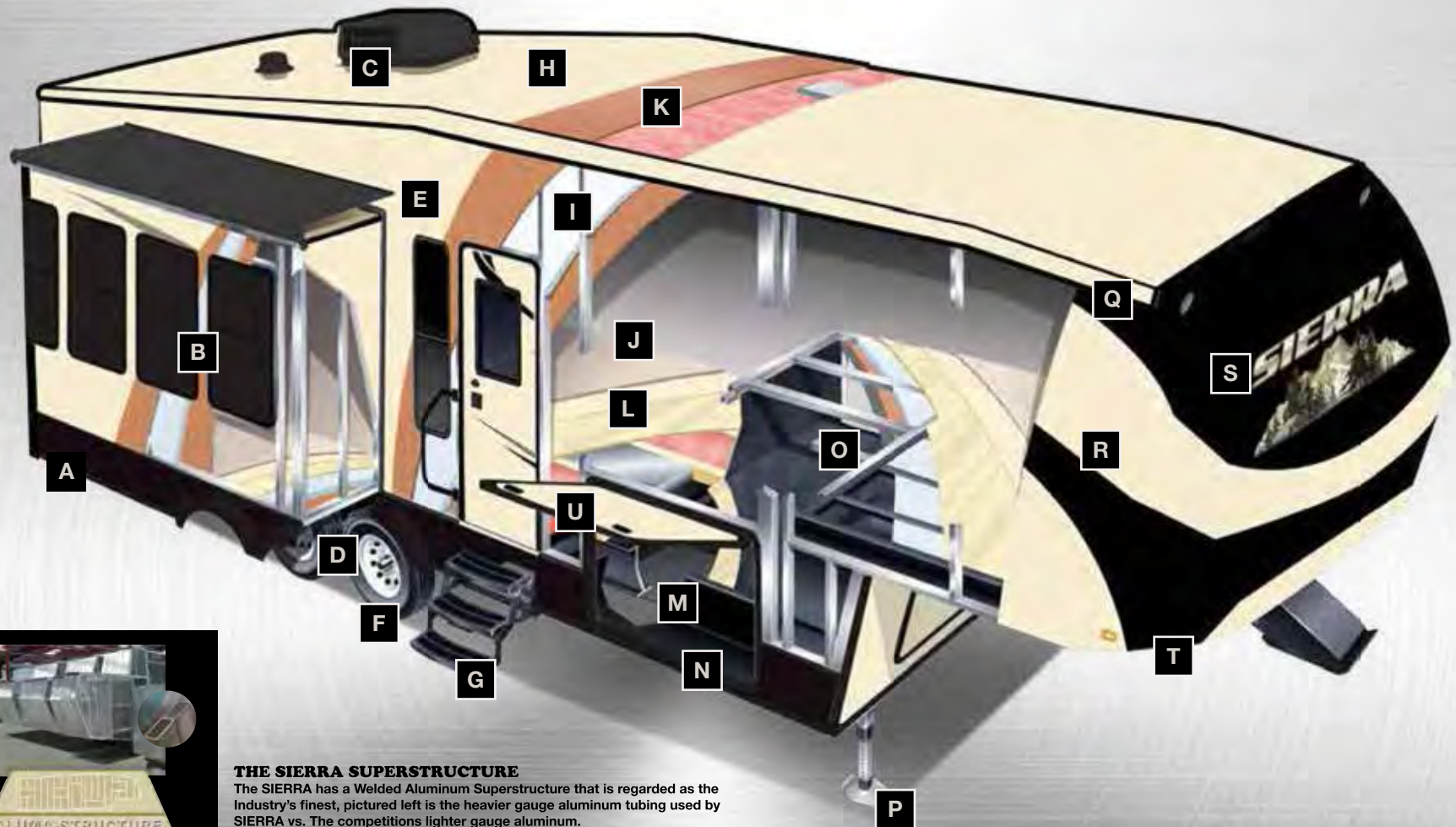
MERLOT INTERIOR



PEBBLE INTERIOR



BEACHWOOD INTERIOR



THE SIERRA SUPERSTRUCTURE

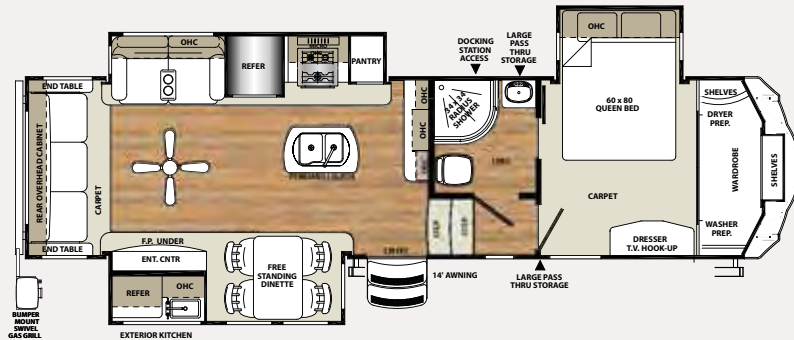
The SIERRA has a Welded Aluminum Superstructure that is regarded as the industry's finest, pictured left is the heavier gauge aluminum tubing used by SIERRA vs. The competitions lighter gauge aluminum.

- | | | |
|---|--|--|
| A. ROLLED ALUMINUM SIDED SKIRTING | I. 2" BLOCK FOAM INSULATION | Q. SLEEK RADIUS ROOF |
| B. SAFETY GLASS TINTED WINDOWS (80%) | J. STAIN RESISTANT CARPET W/ PADDING | R. COLOR MATCH HIGH GLOSS GEL-COATED COLORED FIBERGLASS EXTERIOR |
| C. DUAL ZONE DUCTED 15K BTU AIR CONDITIONING | K. 3/8" ROOF DECKING (FULL WALK-ON ROOF) | S. PAINTED GEL-COAT FIBERGLASS TWO TONE FRONT CAP (STANDARD) |
| D. DEXTER AXLES WITH AUTO ADJUST BRAKES | L. 5/8" TONGUE AND GROOVE PLYWOOD FLOORING | T. IMPROVED FRONT CAP FOR SHARPER TURNING RADIUS |
| E. LAMINATED VACUUM BONDED ALUMINUM SIDEWALLS | M. ENCLOSED HEATED UNDERBELLY | U. INSULATED SLAM LOCK BAGGAGE DOORS |
| F. E RATED RADIAL TIRES | N. I-BEAM POWDER-COATED FRAME W/ RUST INHIBITOR | |
| G. HICKORY SPRINGS™ RADIUS ENTRY STEPS | O. ALUMINUM LAMINATED INSULATED BATH DECK | |
| H. COLOR MATCHED SEAMLESS RUBBER ROOF (12 YR. WARRANTY) | P. POWER FRONT JACKS WITH QUICK RELEASE SNAP PINS (HYDRAULIC JACKS OPTIONAL) | |



The Sierra floorplan lineup is one of the most diverse on the market. We offer some of the most popular floorplans in the industry, but we also offer our customers more. We offer floorplans that are designed from the ground up to be the most functional, efficient and luxurious RV's on the market.

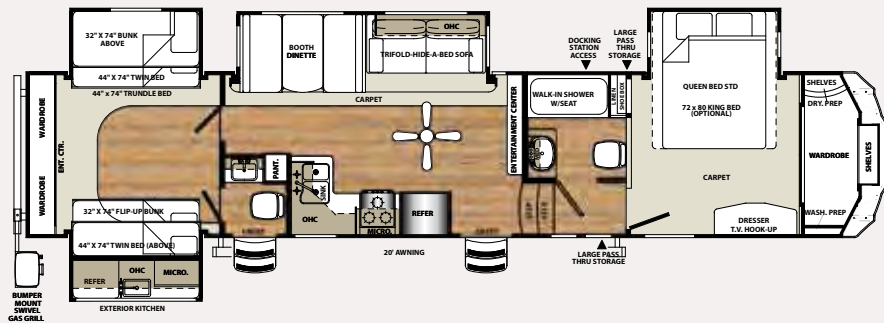
343RSOK



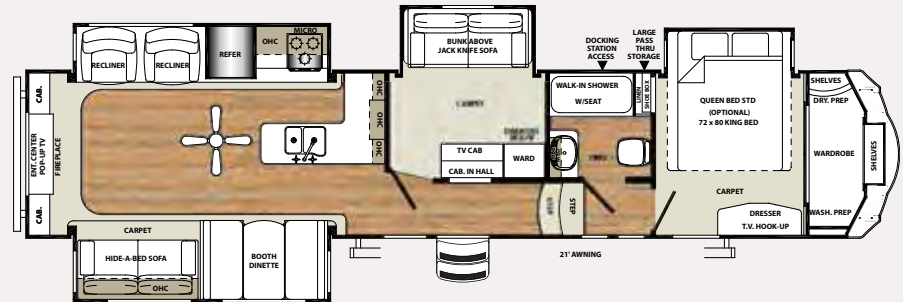
354RET



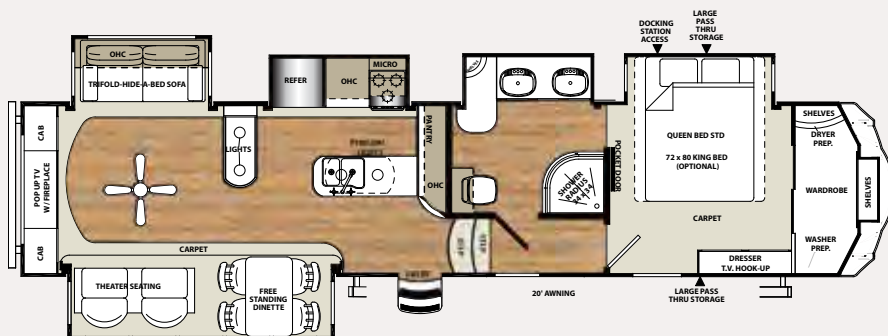
365SAQB



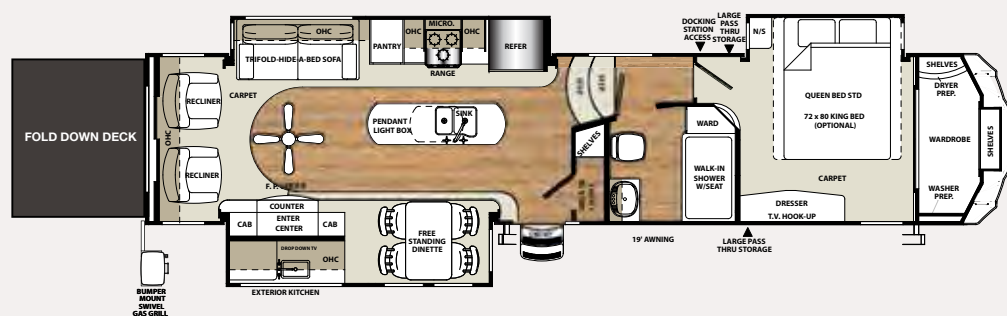
371REBH



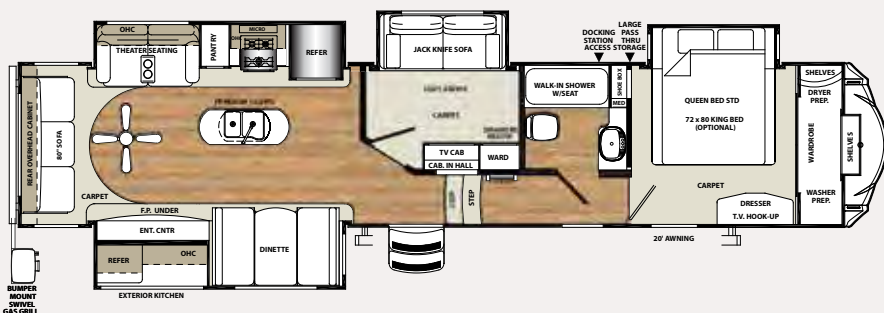
355RE



360PDEK



372LOK



SIERRA FIFTH WHEEL SPECIFICATIONS

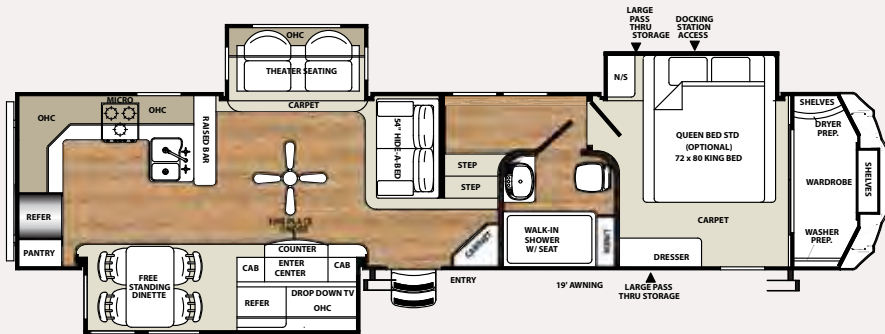
MODEL	343RSOK	354RET	355RE	360PDEK	365SAQB	371REBH	372LOK
HITCH	2,167	2,080	2,084	2,292	2,197	1,996	2,474
UVW	10,803	11,172	12,139	12,799	13,103	12,624	12,962
GVWR	15,500	15,500	15,500	15,500	15,500	15,500	15,500
CARGO	4,697	4,328	3,361	2,701	2,397	2,876	2,538
LENGTH	34'8"	36'0"	40'9"	41'11"	41'7"	42'11"	42'9"
HEIGHT	13'2"	13'2"	13'0"	13'2"	13'2"	13'2"	13'2"
AWNING	14'	16'	20'	19'	20'	21'	20'
GRAY	95	100	100	95	133	100	100
BLACK	50	50	50	50	100	50	50
FRESH	60	60	60	60	60	60	60

See back cover for more information on weights.

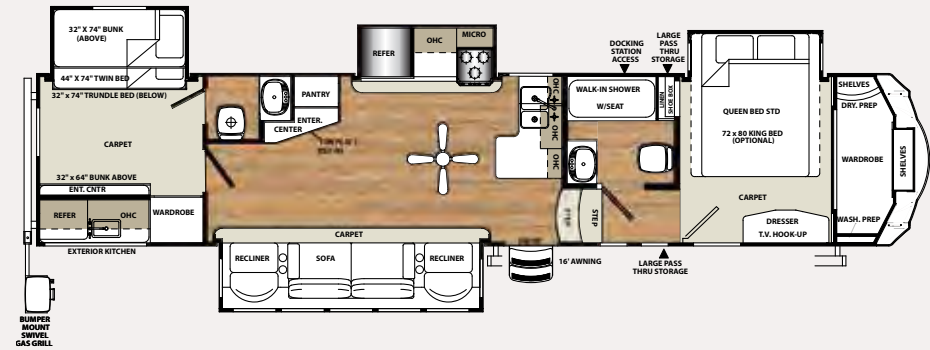


The Sierra floorplan lineup is one of the most diverse on the market. We offer some of the most popular floorplans in the industry, but we also offer our customers more. We offer floorplans that are designed from the ground up to be the most functional, efficient and luxurious RV's on the market.

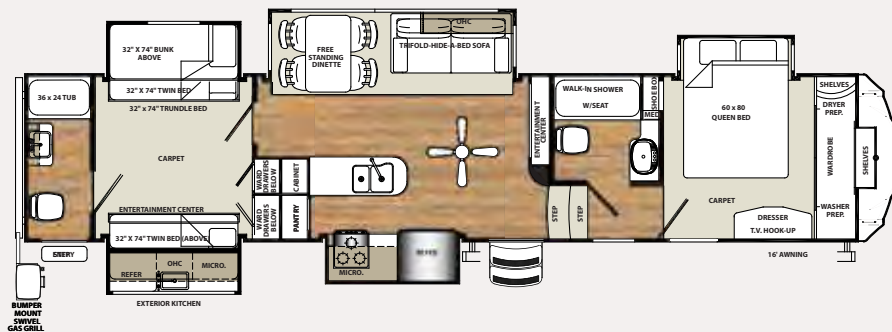
375RKS



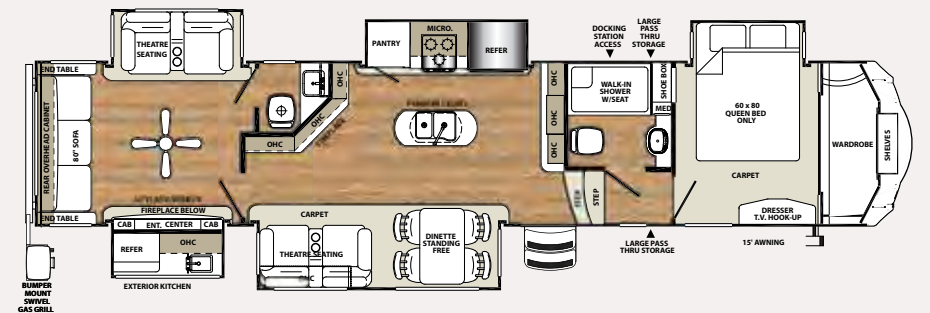
376BHOK



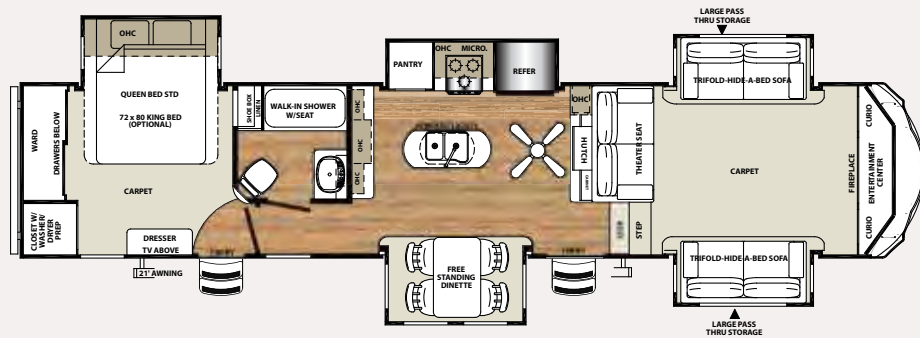
381RBOK



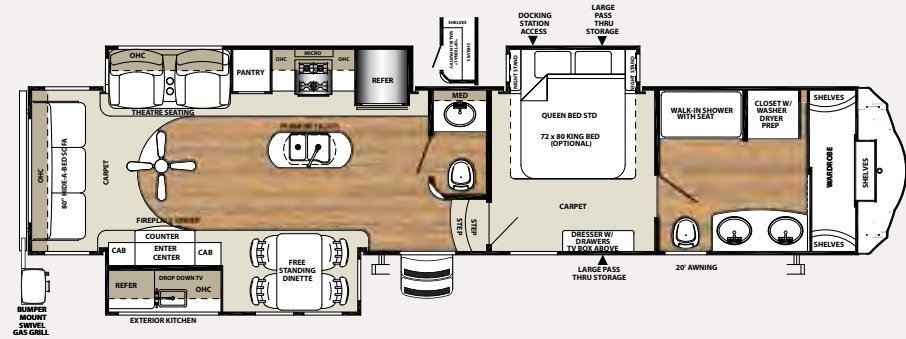
387MKOK



377FLIK



378FB



SIERRA FIFTH WHEEL SPECIFICATIONS

MODEL	375RKS	376BHOK	377FLIK	378FB	381RBOK	387MKOK
HITCH	2,059	2,180	2,235	2,096	2,519	2,537
UVW	11,864	12,669	11,880	12,455	13,131	13,535
GVWR	15,500	15,500	15,500	15,500	15,500	15,500
CARGO	3,636	2,831	3,620	3,045	2,369	1,965
LENGTH	40'6"	43'0"	41'8"	42'7"	42'6"	41'11"
HEIGHT	13'2"	13'2"	13'2"	13'2"	13'1"	13'2"
AWNING	19'	16'	21'	20'	16'	15'
GRAY	80	145	99	95	83	130
BLACK	50	100	33	100	50	80
FRESH	60	60	60	60	60	60

See back cover for more information on weights.



PRE-DELIVERY INSPECTION FACILITY

20,000 square feet of quality assurance. The bare essentials for a premium product. This state-of-the-art facility gives immediate daily feedback to production for quality assurance in every unit built.



Forest River, Inc. encourages our customers to purchase their Forest River products from a local dealership whenever possible for the following reasons:

It is the goal of Forest River, Inc. that all of our RV owners fully enjoy the RV experience and that customer satisfaction meets or exceeds their expectations!

- 1) Forest River, Inc. dealers are independently owned and operated businesses so priority service and scheduling is at their discretion and is often provided to customers that purchased their unit at that dealership.
- 2) Purchasing locally allows customers to establish meaningful relationships with a dealer, enhancing the RV experience through assistance with product questions, user tips or RV regulations for your state or country, and much more!
- 3) Canadian customers must meet requirements to bring an RV purchased out of the country to their home. These requirements may involve additional inspections and certifications, taxes and fees. Your local Canadian Dealer is a professional at meeting these requirements.
- 4) Scheduling timely warranty repairs and adjustments through a local dealership provides far greater flexibility and convenience to you, the customer!

24/7 EMERGENCY ROADSIDE ASSISTANCE

For a worry-free ownership experience

Forest River includes one RV Technical & Roadside Assistance

year of Coach-Net RV Technical & Roadside Assistance with each RV purchase. Whether new to the RV lifestyle or an experienced RV enthusiast, Forest River owners have 24/7 access to technical, operational and emergency road service coverage throughout the US & Canada. Coach-Net's fast, dependable service is just a phone call away.

Coach-Net®

FREE MEMBERSHIP
to Forest River Owners' Group

www.forestriverfrog.com



SIERRA

GVWR (Gross Vehicle Weight Rating) - is the maximum permissible weight of the unit when fully loaded. It includes all weights, inclusive of all fluids, cargo, optional equipment and accessories. For safety and product performance do NOT exceed the GVWR.

GAWR (Gross Axle Weight Rating) - is the maximum permissible weight, including cargo, fluids, optional equipment and accessories that can be safely supported by a combination of all axles.

UVW (Unloaded Vehicle Weight)* - is the typical weight of the unit as manufactured at the factory. It includes all weight at the unit's axle(s) and tongue or pin and LP Gas. The UVW does not include cargo, fresh potable water, additional optional equipment or dealer installed accessories.

*Estimated Average based on standard build optional equipment.

CCC (Cargo Carrying Capacity)** - is the amount of weight available for fresh potable water, cargo, additional optional equipment and accessories. CCC is equal to GVWR minus UVW. Available CCC should accommodate fresh potable water (8.3 lbs per gallon). Before filling the fresh water tank, empty the black and gray tanks to provide for more cargo capacity.

** Estimated average based on standard build optional equipment

Each Forest River RV is weighed at the manufacturing facility prior to shipping. A label identifying the unloaded vehicle weight of the actual unit and the cargo carrying capacity is applied to every Forest River RV prior to leaving our facilities.

The load capacity of your unit is designated by weight, not by volume, so you cannot necessarily use all available space when loading your unit.

All information contained in this brochure is believed to be accurate at the time of publication. However, during the model year, it may be necessary to make revisions and Forest River, Inc., reserves the right to make all such changes without notice, including prices, colors, materials, equipment and specifications as well as the addition of new models and the discontinuance of models shown in this brochure. Therefore, please consult with your Forest River dealer and confirm the existence of any materials, design or specifications that are material to your purchase decision.



Learn More
Scan this barcode using a QR Reader on your smart phone to learn more about Forest River.



A Berkshire Hathaway company.

Forest River, Inc.
2012 Century Dr.
Goshen, IN 46528
(574) 389-4600
www.forestriverinc.com/Sierra
www.forestriveraccessories.com

YOUR SIERRA DEALER

Colton RV
North Tonawanda, NY 14120
(716) 694-0188
(800) 628-4889
www.ColtonRV.com

Colton RV
Orchard Park, NY 1412
(716) 957-3250
(800) 628-4889
www.Coltonrv.com