

# *Columbus*



**FOREST RIVER**

[FORESTRIVERINC.COM](http://FORESTRIVERINC.COM)



# STANDARDS AND OPTIONS

## CONSTRUCTION

- 101" Wide Body
- Patented 7' Upper Deck Height
- All Welded Aluminum Frame Superstructure
- Climate Controlled Drop-Frame Storage
- 5/8" Tongue & Groove Plywood Floor
- Residential Style 2 1/2" Wide Wood Truss Roof with Alpha Ply Membrane w/Extended Life Sealant and 1/2" Decking (8' x 8' Sheets)
- 6' 11" Height Slides (Living Area)
- Heat Ducts in Out-of-Traffic Areas
- 3 Zone LED Strip Ceiling Lighting
- 12V Heat Pads on All Holding Tanks
- Darco Wrap & Fiberglass Insulated Floors & Roof
- 2" Sidewall with Foam Insulation
- MORryde CRE3000 Suspension System
- High Gloss Fiberglass Vacuum Bonded Walls and Slideout Endwalls w/Dual Azdel
- 7000 Lb Lippert™ Axles with ABS (Anti-Lock Braking System)
- 16" Wheels with Tire Pressure Monitoring System
- Painted Fiberglass Front Cap with High Density Spray Foam Insulation
- Rear-View Camera Prep
- Slide Topper Prep

## INTERIOR

- Soft-Close, Hidden-Hinge Reinforced Doors & Drawers w/Upgraded Hardware
- Upgraded Crack, Mold, & Mildew Resistant Flooring
- Upgraded, True Solid Surface Countertops (Bath/Kitchen)
- LED Light Fixtures
- Residential Style Crown Molding Throughout Unit
- Solid Wood Slide Fascia
- Roller Day/Night Shades (Main Areas)
- Solid Wood Steps

## EXTERIOR

- Large Frameless Tinted Windows
- Slam Latches on All Storage Doors
- Magnetic Compartment Door-Holds
- Two-Tone Aluminum Wheels
- Painted Fiberglass Front Cap with High Density Spray Foam Insulation
- Heated Utility Convenience Center
- Black Tank Flush
- Outside Sprayer
- Two 30 Lb LP Tanks
- Entry Door w/Window & Screen Door
- Battery Disconnect
- Power Awning with LED Lighting
- Crank-Down Spare Tire
- 2" Tow Hitch w/4-Way Pin Plugs
- Tire Pressure Monitoring System

## KITCHEN

- Trash Can with Dedicated Storage
- Rollaway Sink Covers
- Residential Style Under-Counter Storage
- Residential Style Backsplash
- Additional Lighting Above Sink Area
- Large Single Basin Stainless Steel Sink
- Single-Lever Faucet with Pull-Out Sprayer

## BEDROOM

- Mirrored Sliding Closet Doors
- High-End Bedspread & Pillows
- Reading Lights with USB Charging Ports
- C-Pap Shelves (Per Model)
- Smart TV
- Dresser w/Solid Wood Soft Close Drawers

## BATHROOM

- 48" x 30" One Piece Fiberglass Shower w/Built-in Seat
- Undermount Porcelain Sink
- Three-Speed Power Vent
- Porcelain Toilet
- Shower Skylight

## FURNITURE

- Power Theater Seating with USB Charging & Storage
- Trifold Sleeper Sofa
- (2) Residential Style Dining Chairs
- (2) Folding Chairs
- Wall Mounted Free-Standing Dinette Table w/Drawer

## APPLIANCES

- 12V Stainless Steel Residential Style Refrigerator with Ice Maker
- Gas Cooktop
- 24" Residential Style Oven (N/A 388FKH)
- 50" Smart TV w/Bluetooth® Audio and Exterior Speakers
- 12 Gal Water Heater with Quick Recovery
- Washer/Dryer Prep
- Full-System Water Purifier
- 30" Residential Style Stainless Steel Microwave
- (2) 15,000 BTU Coleman Ducted Serenity A/Cs (Zone 2 w/Heat Pump)
- 35,000 BTU Furnace
- 5,000 BTU Electric Fireplace (2 on 380RL)
- Omni-Directional Rooftop Antenna with 4G LTE/Wi-Fi Prep
- 50 Amp Converter w/Built-in Charge Wizard & Auto Lithium Detect

## OPTIONS

- Stackable Washer/Dryer
- Dual-Pane Windows
- Full-Body Paint
- Slide Toppers
- 2<sup>ND</sup> 260W Solar Panel
- 3<sup>RD</sup> Ducted A/C Installed IPO MaxxAir Vent
- 5.5KW Onan Generator

# MANDATORY PACKAGES

## COMFORT PACKAGE

### INTERIOR

- Upgraded Residential Style Hardware
- Privacy Day/Night Roller Shades in Main Areas
- Pop-Up Receptacles
- Hybrid Carpet

### APPLIANCES

- Dishwasher Prep
- Washer/Dryer Prep
- Stainless Steel Appliance Package Including Microwave, Gas Cooktop & 12V Fridge w/Ice Maker
- Living Room Ceiling Fan
- 50" Smart TV w/Bluetooth® Audio
- Bedroom Smart TV
- 5000 BTU Electric Fireplace

### FURNITURE

- Power Theater Seating w/USB Charge
- Trifold Sleeper Sofa
- Wall Mounted Free-Standing Dinette Table w/Drawer
- (2) Residential Style Dinette Chairs
- 2 Folding Chairs
- Large Kitchen Pantry (Select Models)

### BATHROOM

- 48" x 30" One Piece Shower w/Built-in Seat
- Undermount Bath Sink with Solid Surface Tops
- Porcelain Toilet
- Aluminum Framed Bed Base
- 3<sup>RD</sup> A/C Prep w/Kitchen MaxxAir Vent

## VOYAGER PACKAGE

### CONSTRUCTION

- 6 Point Hydraulic Leveling System
- MORryde CRE3000 Suspension
- MORryde Upgraded Pinbox
- MORryde Strut Assist Step Above Entry Steps
- 7000 Lb Axles with ABS (Anti-Lock Braking System)
- High Gloss Fiberglass Vacuum Bonded Walls w/Dual Azdel Onboard
- Two-Tone Painted Front Cap w/High Density Spray Foam Insulation
- 12V Heat Pads on Tanks
- Back Up Camera Prep
- Slide Topper Prep
- Ladder
- LP Quick Connect

### EXTERIOR

- Two-Tone Aluminum Wheels
- Tire Pressure Monitoring System
- 2" Tow Hitch w/4-Way Pin Plugs
- Frameless Windows
- Battery Disconnect
- Power Awning w/LED Lighting
- Syphon 360 Vent Covers

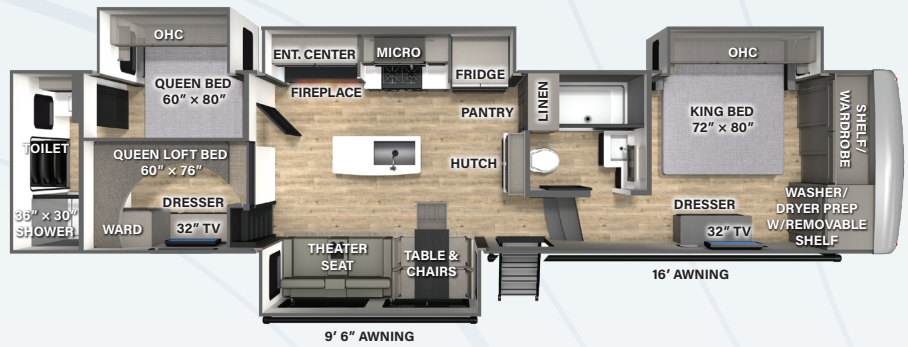
### APPLIANCES

- (2) Quietcool 15K BTU Serenity A/Cs (Zone 2 w/Heat Pump)
- 12 Gal Water Heater
- Power Cord Storage Reel
- One Control Operating System
- Wi-Fi Booster w/4G LTE Capability Prep
- 260W Solar Panel w/30AMP Control w/1800W Inverter & Dedicated Receptacles

# FLOORPLANS

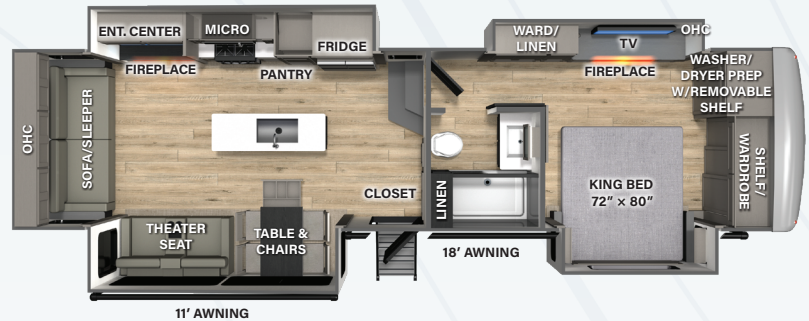
## 376DS

Dimensions	Weights	Tanks
Length: 42' 7"	UVW: 13719	Fresh: 75 Gal
Width: 101"	GVWR: 15999	Gray: 117 Gal
Height: 13' 6"	CCC: 2280	Black: 78 Gal
Awning: 9' 6", 16'	Hitch: 2615	



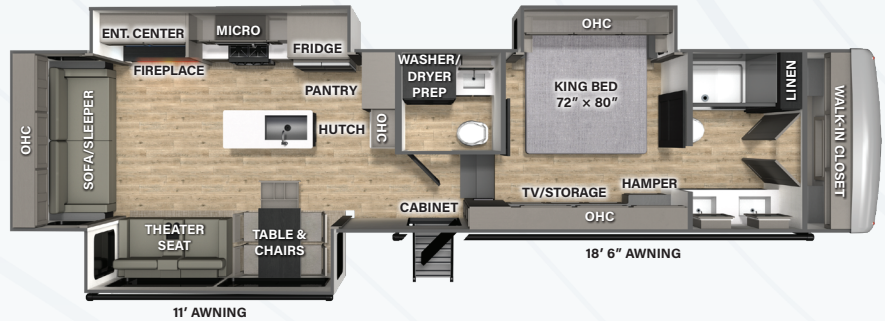
## 380RL

Dimensions	Weights	Tanks
Length: 37' 11"	UVW: 12854	Fresh: 75 Gal
Width: 101"	GVWR: 15499	Gray: 71 Gal
Height: 13' 6"	CCC: 2645	Black: 39 Gal
Awning: 11', 18'	Hitch: 2495	



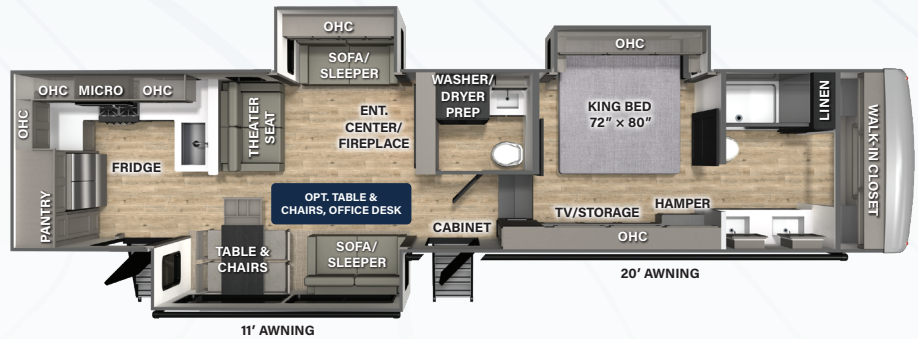
## 383RLH

Dimensions	Weights	Tanks
Length: 42' 2"	UVW: 13722	Fresh: 75 Gal
Width: 101"	GVWR: 15999	Gray: 78 Gal
Height: 13' 6"	CCC: 2277	Black: 78 Gal
Awning: 11', 18' 6"	Hitch: 2756	



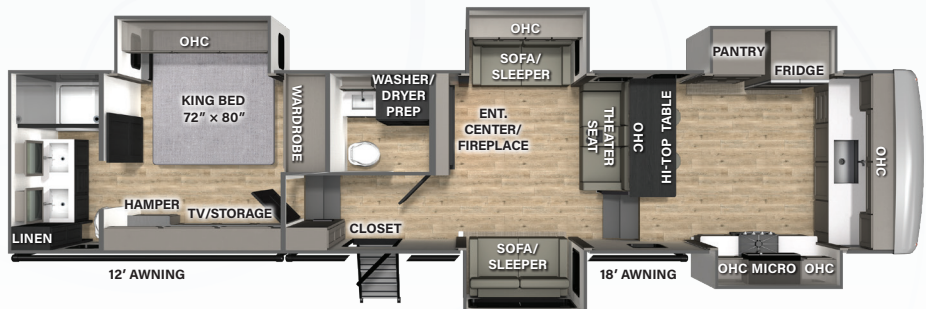
## 384RKH

Dimensions	Weights	Tanks
Length: 42' 7"	UVW: 13327	Fresh: 75 Gal
Width: 101"	GVWR: 15599	Gray: 78 Gal
Height: 13' 6"	CCC: 2272	Black: 71 Gal
Awning: 11', 20'	Hitch: 2457	



## 388FKH

Dimensions	Weights	Tanks
Length: 42' 10"	UVW: 14414	Fresh: 75 Gal
Width: 101"	GVWR: 16685	Gray: 117 Gal
Height: 13' 6"	CCC: 2271	Black: 78 Gal
Awning: 12', 18'	Hitch: 2685	



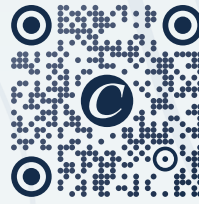
UVW stands for Unloaded Vehicle Weight. See back cover for further specification definitions.



# Columbus

A Division Of Forest River, Inc.  
105-1/2 C.R. 14  
Middlebury, In 46540  
[www.palominorv.com](http://www.palominorv.com)

Follow us!  
#RVBOUND



## SCAN WITH YOUR MOBILE DEVICE

VIRTUAL TOURS, PHOTOS, VIDEOS,  
FOLLOW COLUMBUS ON SOCIAL  
MEDIA, AND MORE!



### EACH NEW FOREST RIVER PURCHASE PROVIDES:

- ✓ Pre-delivery Inspection.
- ✓ Digital Owner's Manual.
- ✓ Free Membership to Forest River Owners Group (FROG).  
Learn more at [www.forestriverfrog.com](http://www.forestriverfrog.com).
- ✓ A Contribution to Care Camps Foundation [www.carecamps.org](http://www.carecamps.org).
- ✓ 1 Year Free Roadside Assistance from Date of Purchase.



### LEARN MORE:

Scan this QR code with your  
mobile device to learn more  
about Forest River.



A Berkshire Hathaway Company



### SPECIFICATION DEFINITIONS:

Scan this barcode using a QR reader on your smartphone  
to learn RV terminology and more!



Colton RV  
489 Bushkill Plaza LN #9665  
Wind Gap, PA 18091  
(610) 863-5239  
[www.ColtonRV.com](http://www.ColtonRV.com)

YOUR **COLUMBUS** DEALER

All information contained in this brochure is believed to be accurate at the time of publication. However, during any model year, it may be necessary to make changes to the manufacturing process of the units and information in this brochure. Your unit may differ from the information in this brochure due to any changes in the manufacturing process and equipment. Forest River, Inc., reserves the right to make all such changes without notice, including prices, colors, combinations, materials, equipment and specifications of any model as well as the addition of new models and the discontinuance of models shown in this brochure. Therefore, please consult with your Forest River dealer and confirm the availability of any materials, combinations, designs, or specifications that are meaningful to your purchase decision. © 2024 Columbus RV, a Division of Forest River, Inc., a Berkshire Hathaway Company. All Rights Reserved. Forest River, Inc. 11/24