

# CONFLUENCE®

ULTRA LIGHTWEIGHT TRAVEL TRAILERS

Colton RV & Marine  
3122 Niagara Falls Blvd  
North Tonawanda, NY 14120  
(716) 694-0188  
[www.ColtonRV.com](http://www.ColtonRV.com)

Colton RV & Marine  
3443 Southwestern Blvd.  
Orchard Park, NY 14127  
(716) 957-3250  
[www.Coltonrv.com](http://www.Coltonrv.com)



GETTING INTO THE ACTION  
**JUST GOT EASIER!**

The all-new **CONFLUENCE** is available in seven exclusive floorplans. All units feature slideouts for that spacious and welcoming feel.

Colton RV & Marine  
3122 Niagara Falls Blvd.  
North Tonawanda, NY 14120  
(716) 694-0188  
[www.ColtonRV.com](http://www.ColtonRV.com)

Colton RV  
489 Bushkill Plaza LN #9665  
Wind Gap, PA 18091  
(610) 863-5239  
[www.ColtonRV.com](http://www.ColtonRV.com)

## STANDARDS

- (2) 20# LP Bottles w/Bottle Cover
- (4) Stabilizer Jacks
- 13,500 BTU A/C
- 1-Piece, Seamless, Walk-on, Tufflex Roofing Material w/Lifetime Warranty
- 3/8" Fully Walk-On Roof Decking
- 30 AMP Service
- KZ Easy-Catch Baggage Door Systems
- LED Exterior Lighting
- Protective Front Diamond Plate
- Satellite & Cable Hookups
- UVA & UVB Resistant Gelcoat Lamilux® Exterior F/G
- Water Heater Bypass
- Roof Vent in Bath
- Shower Surround
- Skylight over Tub
- High Thread Count Quilted Reversible Queen Bedspread
- LED Interior Lighting
- Linoleum Throughout
- Nightshades
- 3-Burner Range w/Oven
- Hand-Crafted Mortise & Tenon Cabinet Doors
- High-Rise Faucet
- Rich Woodbridge Maple Cabinetry
- Roller Ball Bearing Drawer Glides

## OPTIONS

- 15,000 BTU A/C IPO 13,500 BTU A/C
- Low Pro 15,000 A/C IPO 13,500
- 50 AMP Service for 2nd A/C
- 2nd A/C (13,500 BTU)
- Front Window
- Off-Grid Package: 2 110W Roof-Mounted Solar Panels, 30 AMP MPPT Solar Charge Controller w/MPPT Remote Panel & 1,200W Inverter (powers all GFIs & 110V outlet next to bed & outside refrigerators)
- 8 CU FT Gas/Electric Refrigerator IPO 10 CU FT 12V Refrigerator
- Tri-Fold HAB Sofa IPO Jackknife (N/A 17MB, 21MK, 22RB, 22RE, 24BH)
- 39" LED TV (N/A 17MB, 21MK)

## ADVANTAGE PACKAGE

### (MANDATORY OPTION)

#### EXTERIOR

- Amber Lighted Step
- Roof Ladder
- Backup Camera Prep
- Battery Disconnect Switch
- Climate Package (heated, insulated & enclosed underbelly)
- Exterior Docking Station: Fresh Tank Fill, Outside Shower & Cable Hookups

- Exterior Speakers
- Flip-up Entry Step (main entry)
- Folding Grab Handle
- Friction Hinged Entry Door w/Shade Prep, Screenshot & Screen Defender
- Key-Alike Program for Baggage & Entry Doors
- Leash Latch w/Bonus Beverage Opener
- Magnetic Catches for Baggage Doors
- New Front Profile
- Nitrogen-Filled Goodyear Tires
- Outside Kitchen (select models)
- Outside Shower & Cable Hookups
- Power Front Jack
- Solar Roof Prep
- Spare Tire & Carrier
- White Exterior Fiberglass

#### INTERIOR

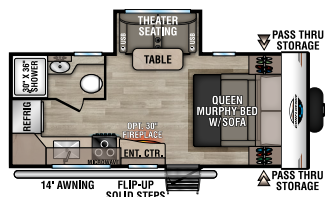
- Bathroom Shelf w/Towel Hooks
- Foot-Flush Toilet
- (2) 12V USB Ports in Bedroom
- 12V USB in Bunk Area
- Plywood Bed Base w/Gas Struts
- Redesigned Shirt Closet w/Storage Shelves & Charging Stations
- (2) 6.5" Interior Speakers
- Beauflor Flooring in Slideouts
- Pleated Shades
- RV Airflow A/C System w/Air Filter

- Cabinet Doors at Booth Dinette
- Drop-in Cooktop w/Glass Cover & Oven
- Pressed Live Edge Dinette Table Top
- Seamless Countertops w/Deep Undermount Stainless Steel Kitchen Sink
- Sink Cover
- Jackknife w/Center Console & Built-in Bolster Arms
- Multi-Media Entertainment System w/DVD

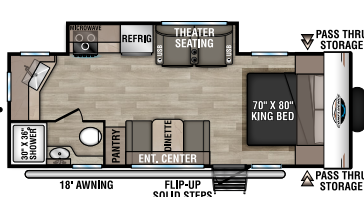
## CONVENIENCE PACKAGE

### (MANDATORY OPTION)

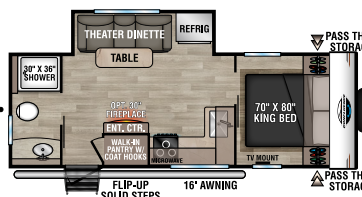
- Aluminum Wheels
- LED Lights in Exterior Speakers
- Omnidirectional HDTV Antenna w/Wi-Fi Prep
- Power Awning w/LED Light Strip
- KZ Engage: Powered by OneControl (monitors: battery levels, controls: slide rooms, leveling system, awning(s), inside/outside lighting, TPMS prep)
- Upgraded Linoleum
- 10 CU FT 12V Refrigerator w/Dual Temperature Control
- Matte Black Residential Kitchen Faucet
- Stainless Steel Microwave



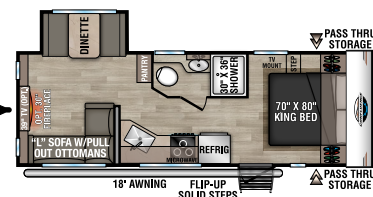
17MB



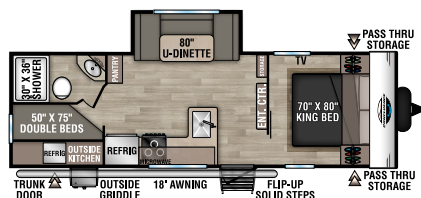
21MK



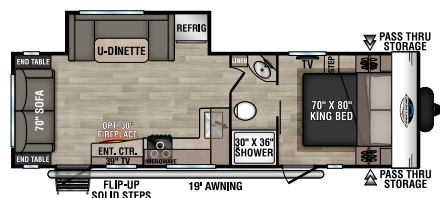
22RB



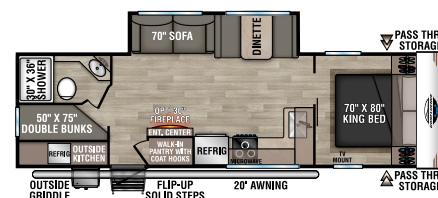
22RE



24BH



25RL



26BH

Ultra Lightweight Travel Trailers	17MB	21MK	22RB	22RE	24BH	25RL	26BH
UVW (Unloaded Vehicle Weight)*	4,700	5,150	5,400	5,240	5,380	5,720	5,930
Dry Hitch Weight*	600	560	720	570	640	685	820
Dry Axle Weight*	4,100	4,590	4,680	4,670	4,740	5,035	5,110
CCC (Cargo Carrying Capacity)	1,800	1,350	1,600	1,760	1,620	1,280	1,570
GVWR	6,500	6,500	7,000	7,000	7,000	7,000	7,500
Interior Height	78"	78"	78"	78"	78"	78"	78"
Exterior Height w/ A/C	10' 10"	10' 10"	10' 10"	10' 10"	10' 10"	11'	10' 10"
Exterior Width	96"	96"	96"	96"	96"	96"	96"
Exterior Length**	22' 6"	26' 1"	27'	27' 1"	29' 1"	29' 7"	32' 1"
Refrigerator (cu. feet)	10	10	10	10	10	10	10
Water Heater Cap. (gal. G/E w/DSI)	6	6	6	6	6	6	6
Fresh Water Cap. (gal.)	45	45	45	45	45	45	45
Waste Water Cap. (gal.)	32	32	32	32	32	32	32
Gray Water Cap. (gal.)	32	32	64	32	32	32	64
LP Gas Cap. (lbs.)	40	40	40	40	40	40	40
Furnace BTUs (1,000s)	30	30	30	30	30	30	30
Tire Size	15"	15"	15"	15"	15"	15"	15"
Awning	14'	18'	16'	18"	18'	19'	20'

\*This weight reflects the rolling average unit weight for each model.

Your trailer weight will vary according to optional equipment.

\*\*Exterior length is measured from rear of bumper to leading edge of coupler.

Due to continual research and advances, manufacturer reserves the right to change specifications, design, price and equipment without notice, and assumes no responsibility for any error in this literature. Some items shown are not included as standard or optional equipment.