

TT & 5TH

ULTRA LITE | WINDJAMMER | SIGNATURE ULTRA LITE

ROCKWOOD

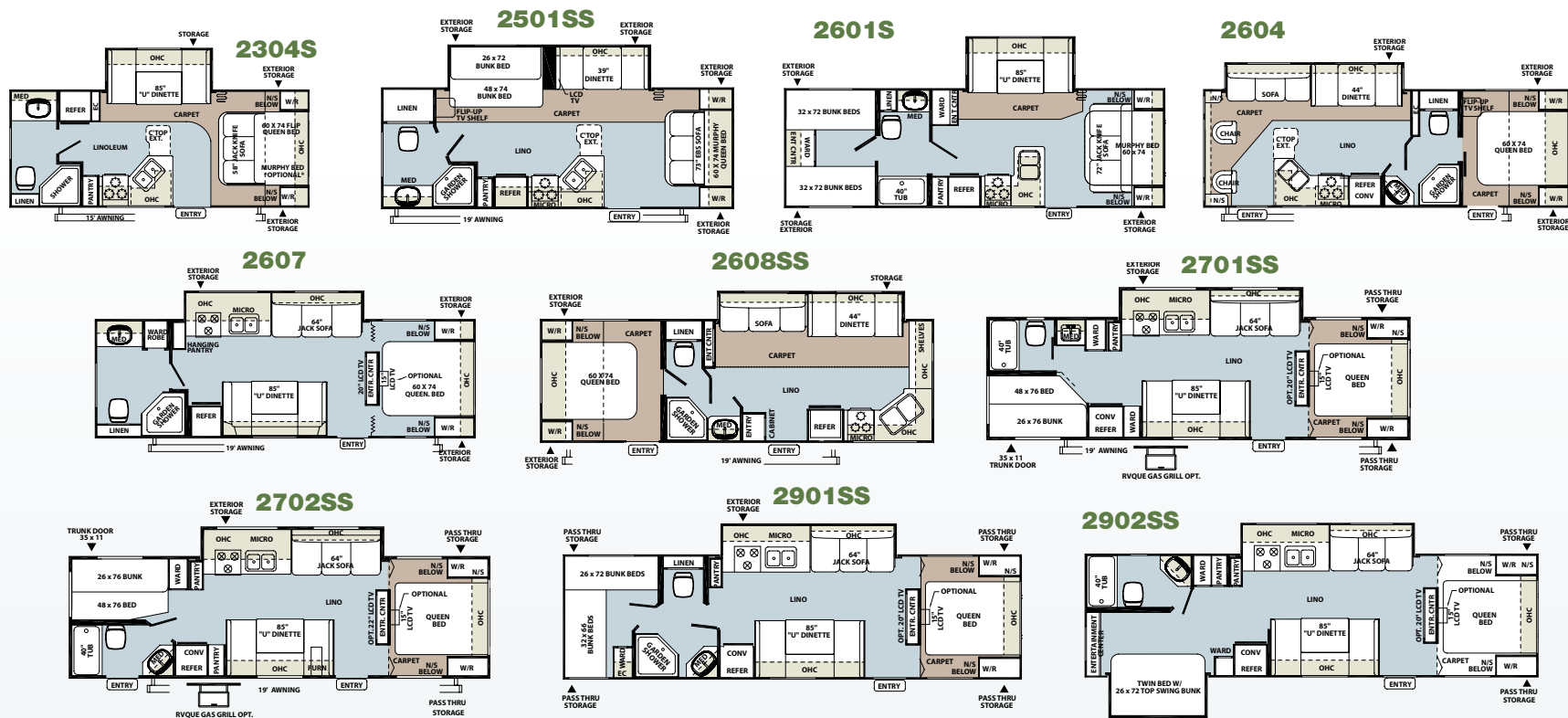
FOREST RIVER PRESENTS

# ROCKWOOD

ULTRA LITE | WINDJAMMER | SIGNATURE ULTRA LITE TT & FW







# Rockwood Ultra Lite Series

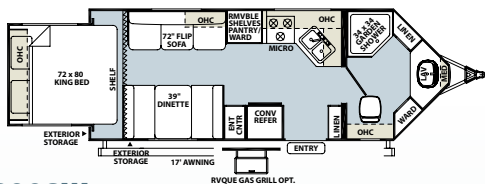
We have custom designed our trailers for the best look and feel you expect when owning a Rockwood.

Quality craftsmanship and attention to detail have been put into our trailers—all with you in mind. The expansive queen-size beds, kitchen dinettes and exterior storage compartments are just a few notable features. Take a look for yourself and see why we are proud to call ourselves Rockwood.

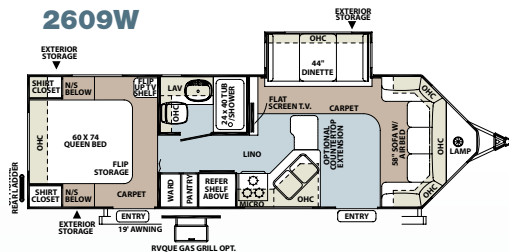
[illegible]

Model number of any particular unit does not necessarily reflect the overall length of the unit itself. Dry weights are estimates.

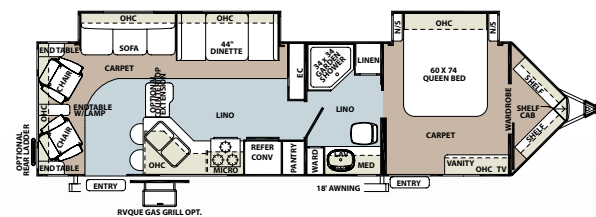
2102W



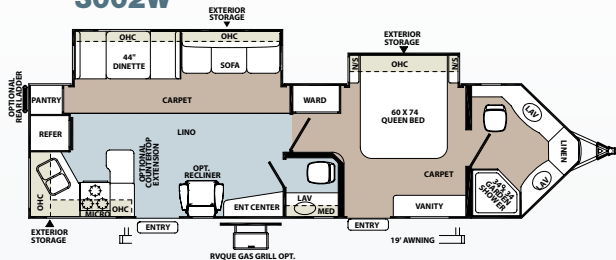
2609W



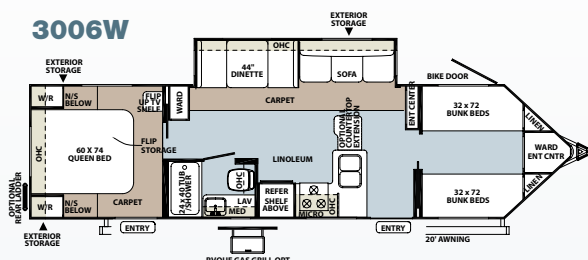
3001W



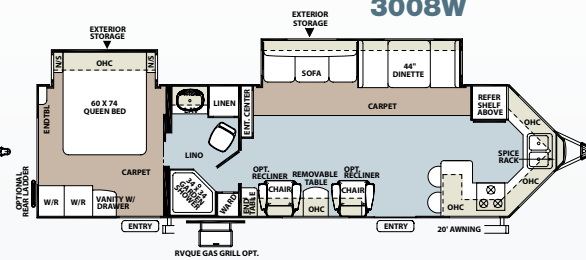
3002W



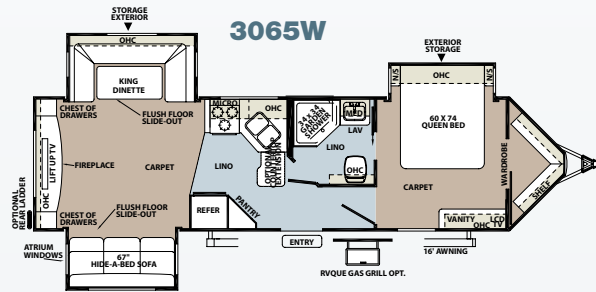
3006W



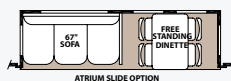
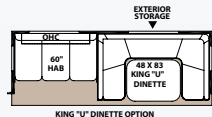
3008W



3065W



### Slide-Out Options



**\*\* Slide options available on Signature/Windjammer super slides only**



# Rockwood Windjammer Series

MODEL	2102W	2609W	3001W	3002W	3006W	3008W	3065W
GVWR (Gross Vehicle Weight Rating)	7028	8659	8848	8832	8402	8742	8760
BASE/DRY UNIT WEIGHT	4781	5293	6616	6447	6129	6544	6744
BASE DRY HITCH WEIGHT	577	659	848	832	974	742	760
BASE DRY AXLE WEIGHT	4204	4634	5768	5615	5155	5802	5984
CARGO CAPACITY	1900	1900	1900	1900	1900	1900	1900
LENGTH	24' 8"	29' 5"	34' 3"	34' 3"	34' 3"	34' 3"	34' 3"
WIDTH	96"	96"	96"	96"	96"	96"	96"
HEIGHT W/O A/C	120"	120"	120"	120"	120"	120"	120"
INTERIOR HEIGHT	78"	78"	78"	78"	78"	78"	78"
FRESH WATER CAPACITY	43 gal	43 gal	43 gal	43 gal	43 gal	43 gal	43 gal
GRAY WATER CAPACITY	38 gal	32 gal	38 gal	76 gal	38 gal	70 gal	38 gal
BLACK WATER CAPACITY	38 gal	38 gal	38 gal	76 gal	38 gal	38 gal	38 gal

Model number of any particular unit does not necessarily reflect the overall length of the unit itself. Dry weights are estimates.

The Rockwood Windjammer uses every possible space for interior room and storage, thanks to its "V" nose design. The aerodynamic, six-sided vacuum-bonded exteriors can be towed by a wide variety of vehicles on the market. A variety of standards and options gives extensive customization for each individual consumer.



Rockwood takes careful consideration to each feature added into each product produced. Every detail is considered ranging from extra sleeping room, storage, comfort and convenience.

Take time to review the features listed below and match them with the competition's products. We're confident you'll discover Rockwood the superior choice.

## Rockwood Features



A



B



C



D1



D2



D3



E



F



G

- A** Extra large dinette storage drawers
- B** Full extension metal drawer guides in the kitchen
- C** Day night shades (Std. on Signature/Windjammer and Opt. on Ultra Lite)
- D1** Residential Style Air Bed Sofa (Opt. Std. on 2604, 2608SS, and Windjammer)
- D2** Full 60" x 80" queen air mattress on standard sofa. (48" x 80" Double air mattress with King-U-Dinette option.)
- D3** Additional storage under sofa
- E** Forest River Switch Center (N/A Ultra Lite)
- F** Gaming plate (Std. on Windjammer, Signature Ultra Lite, Opt. on Ultra Lite)
- G** Serta residential grade mattress (N/A Ultra Lite, CP on Windjammer, Signature Ultra Lite)

## Luxurious Residential Fabrics



Charleston



Westport



Vineyard



Cherry Décor Option

Standard Floor Covering

Oak Décor Option



Tuscan Cream Interior

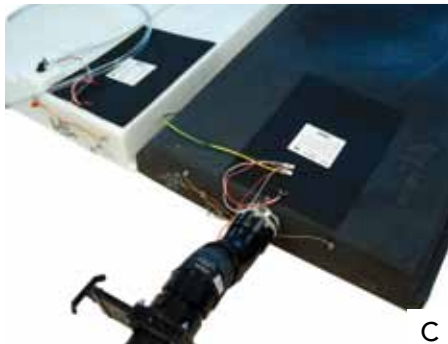
Wood-Look Floor  
Covering Only avail-  
able with Tuscan  
Cream and Combo  
Décor (NA with Ultra  
Lite models)



A



B



C



D



E

- A** Door side cable hook up (N/A Ultra Lite)
- B** Heated pass through storage with separated front trunk area. (Std on all 5th Wheels)
- C** Heated holding tanks with 12 Volt heat pads. (Std on Signature Ultra Lite, Windjammer and Opt. on Ultra Lite)
- D** Free-standing chair with seat storage and table with extension (Opt.)
- E** Large LCD TV and Entertainment Center (Std on most models)

Rockwood takes pride in constructing the very best products possible in each price point. From our entry level units to our top of the line products, no short cuts are taken to achieve excellence.

From the all-steel I-beams to the residential interior amenities to the vacuum-bonded exteriors, Rockwood products are quality-built from the ground-up.

## Rockwood Construction Features



A



B



C



D



E



F

- A** Aluminum bed frame with lid wood drawer storage. (Drawer storage most models)
- B** Aluminum dinette frames for added strength and weight savings
- C** Front window with rock guard for additional daylight (Most models)
- D** TPO front cap adds strength and durability. (Std. Signature TT and FW)
- E** All Steel "I" beam frame construction
- F** Enclosed underbelly protects trailer components as well as increasing aerodynamics

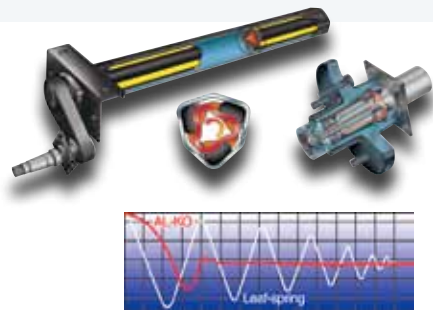




A



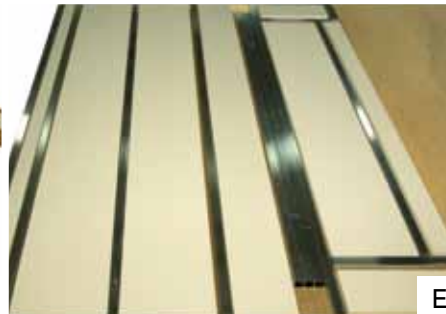
B



C



D



E



F1



F2



F3

**A** Rockwood is one of the few light weight manufactures that is a fully 6 sided vacuum bonded trailer. Our walls, floors, roof, fronts and backs are all built vacuum bonded to ensure a light weight strong structural trailer.

**B** Structurally engineered materials makes our vacuum- bonded walls some of the strongest in the industry.

**C** ALKO® AXLES AND EASY LUBE HUBS

- Four wheel independent suspension.
- Lower trailer center of gravity for improved stability.
- No metal to metal contact and no springs, shackles, hangers, or U-bolts to break or wear out.

**D** Glued and screwed wood cabinetry

**E** Vacuumed bonded floor with 16" on center aluminum floor joists

### ROOF CONSTRUCTION

**F1** Vacuumed bonded roof with 2" radius

**F2** Radius roof foam with built in A/C ducts

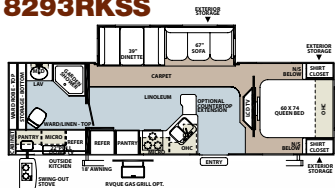
**F3** 4.5" thick roof foam



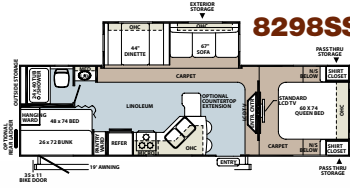
The Rockwood Signature Ultra Lite is the ultimate luxury product in the light weight trailer market. Offering more floor plans, features and options than any other in it's class, we stand proudly showcasing over 17 years of experience in a premium product.



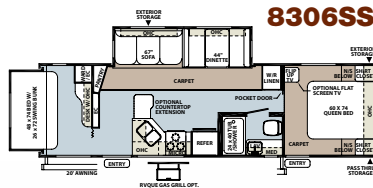
8293RKSS



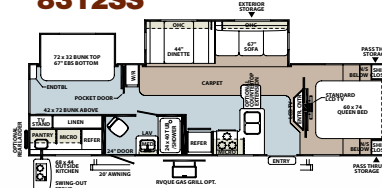
8298SS



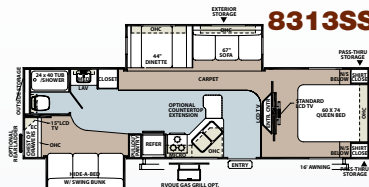
8306SS



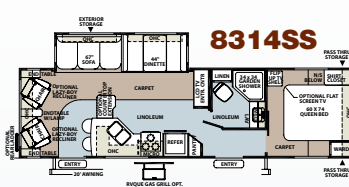
8312SS



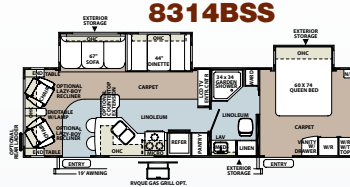
8313SS



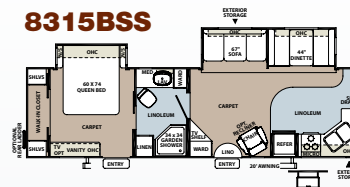
8314SS



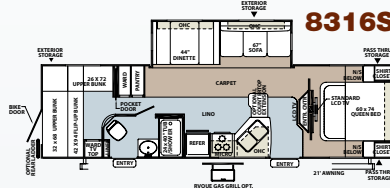
8314BSS



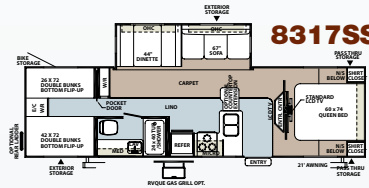
8315BSS



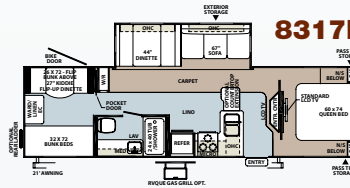
8316SS



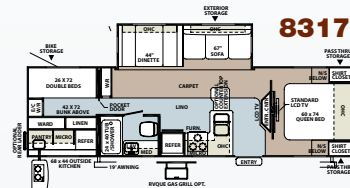
8317SS



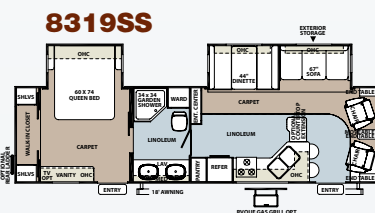
8317KDSS



8317RKSS

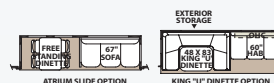


8319SS



### Slide-Out Options

\*\* Slide options available on Signature/Windjammer super slides only



### TRAVEL TRAILERS

# Rockwood Signature Ultra Lite Series

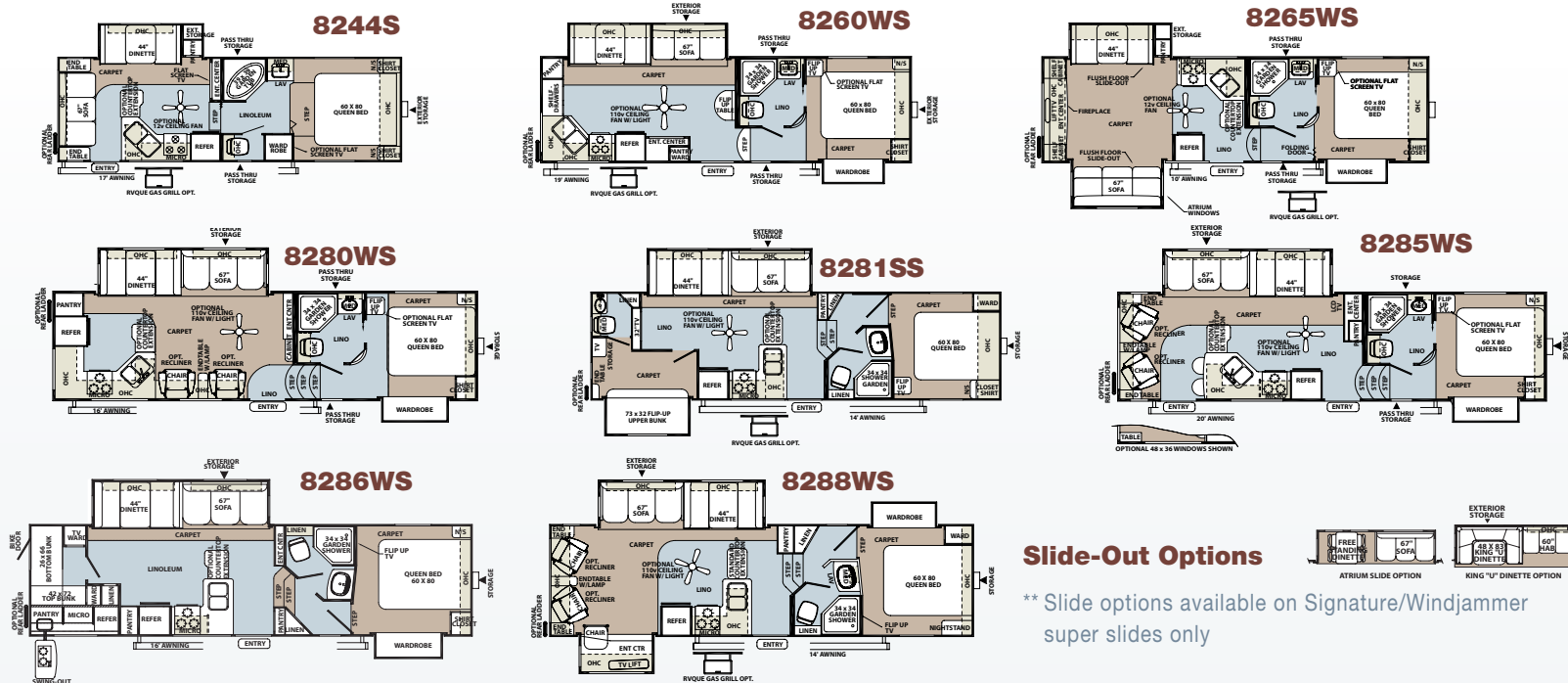
MODEL	8293RKSS	8298SS	8306SS	8312SS	8313SS	8314SS	8314BSS	8315BSS	8316SS	8317SS	8317KDSS	8317RKSS	8319SS
GVWR (GROSS VEHICLE WEIGHT RATING)	8344	8312	8657	8928	8790	8504	8780	8814	8512	8487	8424	8544	8764
BASE/DRY UNIT WEIGHT	5887	5947	6302	6769	6340	5981	6379	6476	6085	5981	5938	6094	6559
BASE DRY HITCH WEIGHT	536	771	840	928	790	639	780	814	844	1023	974	968	764
BASE DRY AXLE WEIGHT	5351	5176	5462	5841	5550	5342	5599	5662	5241	4958	4964	5126	5795
CARGO CAPACITY	1900	1900	1900	1900	1900	1900	1900	1900	1900	1900	1900	1900	1900
LENGTH	32' 2"	31' 6"	33' 3"	33' 10"	34' 1"	34' 1"	34' 8"	34' 1"	34' 1"	34' 1"	34' 1"	33' 1"	32' 2"
WIDTH	96"	96"	96"	96"	96"	96"	96"	96"	96"	96"	96"	96"	96"
HEIGHT W/O A/C	120"	120"	120"	120"	120"	120"	120"	120"	120"	120"	120"	120"	120"
INTERIOR HEIGHT	78"	78"	78"	78"	78"	78"	78"	78"	78"	78"	78"	78"	78"
FRESH WATER CAPACITY	43 gal	43 gal	43 gal	43 gal	43 gal	43 gal	43 gal	43 gal	43 gal	43 gal	43 gal	43 gal	43 gal
GRAY WATER CAPACITY	38 gal	76 gal	38 gal	38 gal	70 gal	76 gal	38 gal	64 gal	38 gal	38 gal	38 gal	38 gal	38 gal
BLACK WATER CAPACITY	38 gal	38 gal	38 gal	38 gal	38 gal	38 gal	38 gal	38 gal	38 gal	38 gal	38 gal	38 gal	38 gal

Model number of any particular unit does not necessarily reflect the overall length of the unit itself. Dry weights are estimates.



Standard on Travel Trailer models: 8293RKSS, 8312SS, 8317RKSS.

Standard on Fifth Wheel model: 8286WS



# Rockwood Signature Ultra Lite Series

MODEL	8244S	8260WS	8265WS	8281SS	8280WS	8285WS	8286WS	8288WS
GVWR (GROSS VEHICLE WEIGHT RATING)	8188	8778	9144	9407	9134	9253	9522	9595
BASE/DRY UNIT WEIGHT	5880	6366	6773	7308	6870	6866	7346	7220
BASE DRY HITCH WEIGHT	997	1515	1200	1407	1134	1253	1522	1595
BASE DRY AXLE WEIGHT	4883	4851	5573	5901	5736	5613	5824	5625
CARGO CAPACITY	1900	1900	1900	1900	1900	1900	1900	1900
LENGTH	26' 3"	28' 10"	29'	30' 4"	30' 4"	30' 4"	30' 6"	31' 2"
WIDTH	96"	96"	96"	96"	96"	96"	96"	96"
HEIGHT W/O A/C	136"	136"	136"	146"	146"	146"	146"	146"
FRESH WATER CAPACITY	43 gal	43 gal	43 gal	43 gal	43 gal	43 gal	43 gal	43 gal
GRAY WATER CAPACITY	38 gal	76 gal	38 gal	76 gal	76 gal	76 gal	76 gal	76 gal
BLACK WATER CAPACITY	38 gal	38 gal	38 gal	76 gal	38 gal	38 gal	38 gal	38 gal

Model number of any particular unit does not necessarily reflect the overall length of the unit itself. Dry weights are estimates.

Rockwood redefines camping by having the necessities of residential living on the camp site. It's all in the details. Features like the residential Serta mattresses and flush-mount stone cast sinks with lift-off kitchen faucets are simple amenities that add tremendously to the comfort of your vacation.





# Rockwood Fifth Wheel & Travel Trailer Standards & Options

Models	UL	W	SUL	Models	UL	W	SUL	Models	UL	W	SUL
<b>INTERIOR FEATURES</b>											
· Tuscan Cream, Oak, Cherry and Combo Interior (Combo NA in UL models)	O	O	O	· Upgraded Recessed Lighting Around Medicine Cabinet	--	S	S	· Day/Night Shades	O	S	S
· Decorative Solid Wood Slide Out Fascia	--	S	S	· LCD TV With 5.1 Digital Dolby Surround Sound Speaker System (N/A w/ UL: 2304S)	O	S	S	· Aluminum Bed and Dinette Frames	S	S	S
· Solid Wood and Raised Panel Doors and Drawers	S	S	S	· Digital AM/FM/DVD w/ Remote	CP	S	S	· 44" Family Style Dinette (N/A w/ UL: 2304S, 2701SS, 2901SS, 2902SS W:3065W)	S	S	S
· Screwed and Glued Cabinetry	S	S	S	· MP3 Player Hook-Up	S	S	S	· 48" X 84" Spacious King-U-Style Dinette (Std. w/ UL: 2304S, 2601S, 2701SS, 2901SS, 2902SS W:3065W) (N/A w/ W: 2102W, 2609W SUL: F8244S, F8265WS, F8288WS)	S	S/O	O
· Residential Full Extension Metal Drawer Guides in Kitchen	S	S	S	· Satellite Radio	O	S	S	· Free Standing High Pressure Laminated Table with Swing Level Leg	S	S	S
· Flooring: Carpet and an Engineered Mold and Mildew Resistant Floor Covering	S	S	S	· Mounted 22" LCD TV	CP	--	--	· Free Standing Table and Chairs (UL: 2604SS, 2608SS Only)	O	O	O
· Minimum Carpet available	O	O	O	· 22" LCD TV Mounted in Bedroom (Std. on all TT Center Entertainment Floor Plans)	--	--	S	· Stainless Steel Appliances	O	O	O
· Floor Ducted Furnace	S	S	S	· LCD Bedroom TV	--	O	O	· Raised Refrigerator Panels	O	O	O
· 13,500 BTU Ducted Roof Air	CP	CP	CP	· Drop Down 22" LCD TV in O/S Kitchen (SUL: 8293RKSS and F8286WS Only)	--	--	S	· Auto Gas/Electric Refrigerator	S	S	S
· 15,000 BTU Ducted Roof Air	O	O	O	· Air Hide-A-Bed Sofa w/ Storage (N/A w/ W: 2102W, SUL: F8244S) (Std. w/ UL: 2604, 2608S, W: Most models)	S	O	O	· Three Burner High Output Gas Range	S	S	S
· Ceiling Fans (Fifth Wheels)	--	--	O	· Swivel Chair (Where available)	S	S	S	· Gas Oven With Piezo Ignition	CP	S	S
· Carbon Monoxide Detector	SO	SO	SO	· Lazy Boy Leather Recliner Option: Available 'ILO All Units with Barrel Chairs (N/A w/ W: 3001W, SUL: 8319SS)	--	O	O	· Microwave	CP	CP	CP
· 12 Volt Power Plug Hook-up	S	S	S	· End Table with Attached Lamp (Where available)	S	S	S	· Large Double Bowl Sink w/ Residential Style Faucet	S	--	--
· CSA	O	O	O	· Designer Valances w/ Lambrequin Arms	S	S	S	· New Flush Mount Stone Cast Sinks with Lift-Off Kitchen Faucets	--	S	S
· Monitor Panel	S	S	S	· Mini Blinds	S	--	--	· Residential One-Piece Sink Cover/ Cutting Board	S	S	S
· 55 Amp Converter With Charger	S	S	S								
· Interior Floor Light by Entrance Door	--	S	S								
· Directional Reading Lights on Sofa Slides	S	S	S								
· Residential Dome Style Lights Over Sofa and Table	--	S	S								

UL = ULTRA LITE, W = WINDJAMMER, SUL = SIGNATURE ULTRA LITE

S = STANDARD

O = OPTIONAL

CP = CONVENIENCE PACKAGE

SO = STANDARD OPTION

-- NOT AVAILABLE

Models	UL	W	SUL
· Water-Pur Filtration System	SO	SO	SO
· Counter Top Extension (N/A w/ W: 3008W SUL: 8315BSS, F8260W) (Available UL: 2304S, 2501SS, 2604 Only)	0	0	0
· Trash Can in Kitchen (Most Models)	--	S	S
· Tub Surround	S	S	S
· Bathroom Skylight	S	S	S
· Six Gallon "Quick Recovery" 110 DSI Gas/Electric Water Heater	CP	S	S
· Water Heater By-Pass Kit	S	S	S
· Residential Style Porcelain Bowl Foot Flush Toilet	--	S	S
· Foot Flush Toilets	S	--	--
· Create-a-Breeze Three Speed Fantastic Vent	SO	SO	SO
· Extra Create-a-Breeze fan	0	0	0
· Residential Serta Mattress	--	CP	CP
· Murphy Bed System for Unmatched Floor Plan Flexibility (UL:2304S, 2501SS,2601SS Only)	S	--	--
· Heated Mattress	SO	0	0

#### EXTERIOR FEATURES

· Fully Laminated Aluminum Frame (Floor, Sidewall, & Roof)	S	S	S
· Insulation Factors R-7 Side Wall, R-12 Floor and			

Models	UL	W	SUL
· R-14 Roof	S	S	S
· Radius Roof	S	S	S
· Vinyl / Rubber Composite Roofing Membrane	S	S	S
· TV Antenna w/ Cable & Satellite Hook-Up	S	S	S
· Rear Ladder (N/A w/ W: 2102W SUL: 8306SS)	0	0	0
· Laminated Fiberglass Sidewalls:			
· Lamilux 1500	S	--	--
· Lamilux HG 4000 with High Gloss Finish	--	CP	CP
· Electric Slide-Out	S	S	S
· Decorative Frame Skirting	S	S	S
· Power Awning With Adjustable Rain Dump	CP	CP	CP
· Awning Slide Topper	0	0	0
· 30" Entrance Door (Most Models)	--	S	S
· Lighted Entry Step	--	S	S
· Large Grab Handles	CP	S	S
· Windows w/ Tinted Safety Glass	CP	CP	CP
· Storm Windows available	0	0	0
· Atrium Slide Windows ( Super Slides)	--	0	0
· Outside Gas Grill and Worktable	CP	0	0
· Outside Grill Prep	--	S	S
· Outside Speakers	CP	CP	CP
· Outside Shower	S	S	S
· 1/2 Sliding Storage Tray (N/A 2501 SS)	0	--	--

Models	UL	W	SUL
· Front Outside Storage Separated From Pass Thru Storage (Fifth Wheel Models Only)	--	--	S
· Two 20 lb Gas Bottles	S	--	--
· Two 30 lb Gas Bottles	--	S	S
· Molded Bottle Cover	S	S	S
· Surface Coated Steel I-Beam Frame	S	S	S
· Power Front Jack (Std on 5th wheels)	0	0	0
· Stabilizer Jacks	S	S	S
· Power Stabilizer Jacks (Included in CP: All Fifth Wheel Models)	0	0	0
· Torsion Axle, Rubber-Ryde Suspension	S	S	S
· Easy Lube Axles	S	S	S
· 14" Tires With Double Step	S	--	--
· 15" Tires With Triple Step	--	S	S
· Aluminum Wheels	0	CP	CP
· Chrome-Look Wheel Covers	0	--	--
· Spare Tire Carrier & Cover	CP	CP	CP
· Enclosed Holding Tanks	S	S	S
· Electronically Controlled Heated Holding Tanks	0	S	S
· Black Water Flush	S	S	S





## PEACE OF MIND.

Forest River has yet another exclusive feature to offer: One year of free roadside assistance will be given to every 2011 Rockwood customer. This is just one more way to say "Thank you" and to ensure an enjoyable traveling experience.

## ROCKWOOD WARRANTY INFORMATION

For details on Rockwood's complete warranty program, see your Rockwood dealer. When it comes to backing products with the same quality and commitment it has when it begins the manufacturing process, the only name you have to remember when you're looking for a recreational vehicle is Rockwood. Rockwood offers the following additional limited warranties to the original purchasers. Consult written warranty for details.

1. Twelve-year vinyl roof warranty, 2. Two-year fiberglass warranty, 3. Five-year axle warranty, 4. One-year bumper to bumper, 5. Available second-year warranty.

## FOREST RIVER'S HALLMARK OF EXCELLENCE PRE-DELIVERY INSPECTION FACILITIES



### THAT'S 20,000 SQUARE FEET OF QUALITY ASSURANCE. THE BARE ESSENTIALS FOR A PREMIUM PRODUCT.

Brought online in 2005, Forest River is proud of its state-of-the-art test facility. This beautiful building blends many of the old tried and true methods of testing our diverse types of RVs with new innovative ways of solving quality issues. Being centrally located to most Forest River manufactur-

ing facilities, this 20,000 square foot PDI (Pre-delivery Inspection) test building gives immediate daily feedback to individual managers. This assures the production facilities that nothing has slipped by the plant's quality assurance personnel and the units are "green" and ready to ship.



**Forest River, Inc.** 55470 C.R. 1 Elkhart, IN 46515

[www.forestriverinc.com](http://www.forestriverinc.com) [www.forestriveraccessories.com](http://www.forestriveraccessories.com) 574.389.4600

Scan this barcode using a QR Reader on your smart phone to learn more about Forest River.

## FOREST RIVER ENCOURAGES YOU TO **BUY LOCALLY** FROM YOUR HOMETOWN DEALERSHIP.

Forest River, Inc. strongly encourages our retail customers to purchase from their local dealership whenever possible due to the following factors:

- 1) Our Dealers are as a rule, independently owned and operated businesses. Outside of those customers they personally sold products to, they are not contractually obligated to perform warranty service on Forest River products that were purchased elsewhere. There may be an occasion that you would be required to return to the point of purchase to satisfy warranty requirements.
- 2) Although many dealerships will eventually service products not purchased at their place of business, they will usually take care of their customers and other Forest River customers who are traveling away from their local dealer as they would their own.

3) Local purchases allow a customer to establish a relationship with a dealer close to home. This relationship provides the customer with a convenient location for service and support from a "home town" professional.

4) The opportunity for a thorough PDI (Pre Delivery Inspection) and product orientation is an additional benefit of buying from your local dealer. Further providing the opportunity for refresher courses or the ability to get questions answered much more conveniently.

5) For our Canadian customers, there are also requirements which must be met to bring an RV purchased out of the country to their home. Although not insurmountable, these requirements may involve such things as additional inspections and certifications, taxes and fees. Your local Canadian Dealer is a professional at meeting these requirements.

6) Forest River's goal is for all RV Owners to fully enjoy their RV experience. In light of this goal, and considering the advantages of buying local, we encourage you to be thorough when determining what product to purchase and which dealer to purchase it from as both are key to your ultimate satisfaction and the realization of your dreams.

**Colton RV**  
North Tonawanda, NY 14120  
(716) 694-0188 Your Rockwood Dealer  
(800) 628-4889  
[www.ColtonRV.com](http://www.ColtonRV.com)



**Colton RV**  
Orchard Park, NY 14127  
(716) 957-3250  
(800) 628-4889  
[www.ColtonRV.com](http://www.ColtonRV.com)