

VEGAS RUV

MADE TO FIT
YOUR STYLE



VEGAS

BY THOR MOTOR COACH

WHEN WE SAY *MADE TO FIT*, WE MEAN IT.

With so many unique models available, Thor Motor Coach motorhomes are priced to fit anyone's budget – from families buying their first motorhome, to full-timers looking for a roaming “dream home”. No matter how you choose to spend your time or your money, there's a TMC motorhome that fits your needs. Welcome to the Vegas RUV, the motorhome that is ***Made to Fit*** your style.



25.2 | INDIAN SUMMER | OLYMPIC CHERRY



24.1 | POLISHED PEWTER | SYDNEY MAPLE



24.1 | POLISHED PEWTER | SYDNEY MAPLE



25.2 | INDIAN SUMMER | OLYMPIC CHERRY







DASH WORKSTATION AVAILABLE IN ALL FLOOR PLANS



25.2 | INDIAN SUMMER | OLYMPIC CHERRY

BEAUTY INSIDE & OUT

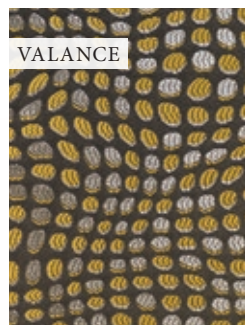


VALANCE & PILLOW

INDIAN SUMMER



RESIDENTIAL VINYL FLOORING

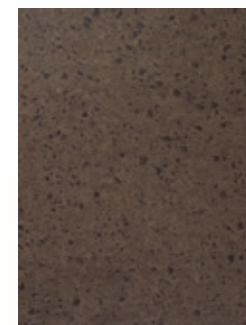


VALANCE



PILLOW

POLISHED PEWTER



BATHROOM
24.1 ONLY

COUNTERTOPS



MAIN



ACCENT

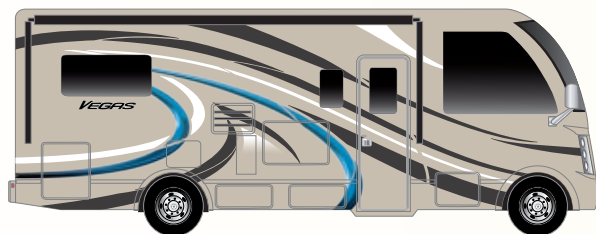
LEATHERETTE FURNITURE



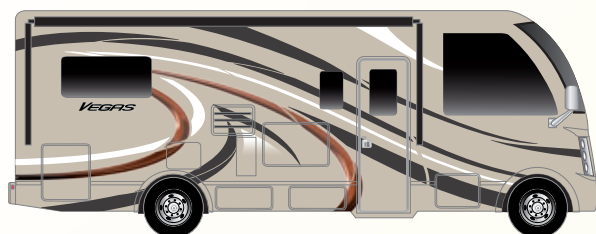
OLYMPIC CHERRY



SYDNEY MAPLE



JAZZY BLUE HD-MAX® 



SYMPHONY RED HD-MAX® 



A | TRITON® 6.8L V10 ENGINE

The 6.8L V10 engine has a proven track record of durability and low-hassle maintenance. Extremely smooth running with a commanding 305-horsepower and 420 lb.-ft. of torque.

B | POWER 4-WHEEL DISC ANTI-LOCK BRAKES

Maintains brake balance in heavy use and varying road conditions. Reduces wheel lock up and helps maintain superior steering control.

C | TWIN I-BEAM FRONT SUSPENSION

Provides a comfortable ride by allowing the front wheels to work independently of each other, reducing driver stress.

D | TORQSHIFT® 6-SPEED AUTOMATIC TRANSMISSION

Provides crisp, firm and quick shifting without sacrificing driver comfort.

E | LIMITED WARRANTY

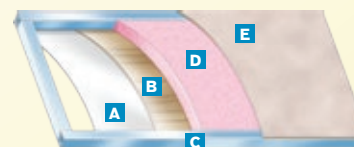
The Ford® Motorhome Chassis has a Bumper-to-Bumper Limited Warranty for 3 years or 36,000 miles and a Powertrain Limited Warranty for 5 years or 60,000 miles, whichever comes first.

Taking the extra time to ensure the best possible structure is exactly what you deserve, and this is why Thor Motor Coach insists on vacuum-bond laminating not only the sidewalls of the motorhome, but also the floor and roof. Vacuum-bonding is the optimum manufacturing process to ensure maximum strength.



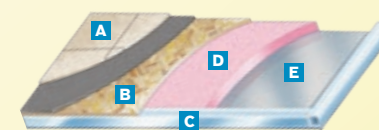
ROOF

- A** One-piece exterior TPO membrane
- B** Luan panels
- C** Aluminum structure with bowed framing
- D** Block foam insulation
- E** Interior panel with hard vinyl covering



SIDEWALLS

- A** High-gloss fiberglass
- B** Luan panels
- C** Aluminum structure with framing at all openings
- D** Block foam insulation
- E** Interior panel with designer wall covering



FLOOR

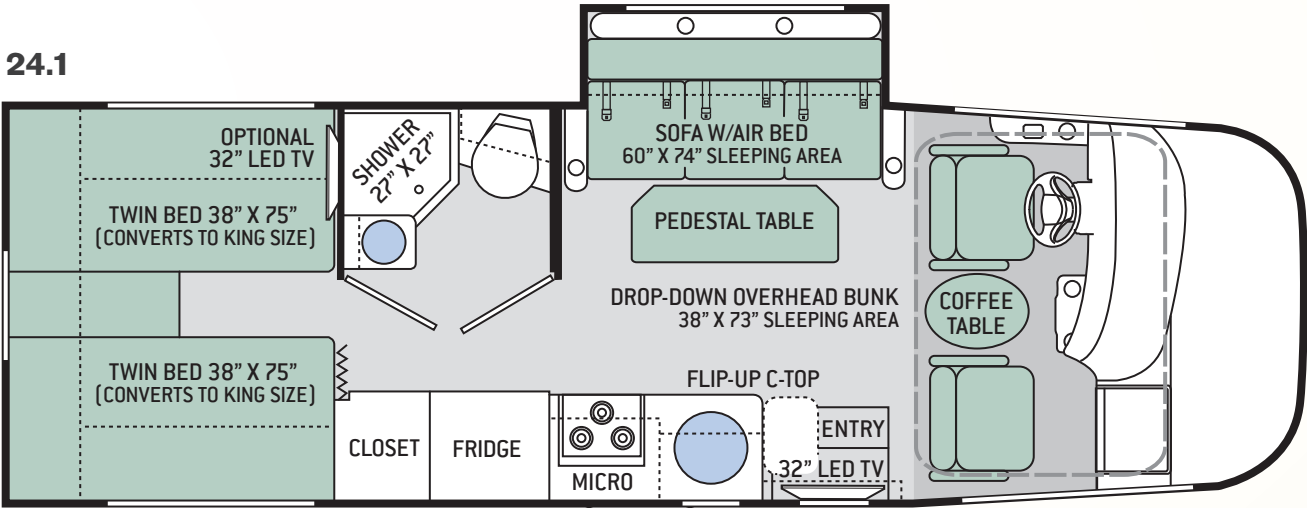
- A** Residential vinyl flooring
- B** OSB structure wood base
- C** Structural steel framing
- D** Block foam insulation
- E** Luan with woven plastic exterior finish

FLOOR PLANS

24.1

| | |
|-------------------------------------|--------------|
| Chassis | Ford |
| Gross Vehicle (GVWR) | 12,500 |
| Gross Combined (GCWR) | 18,500 |
| Wheel Base | 188" |
| Exterior Length (w/o ladder) | 25'-6" |
| Exterior Height (w/AC) | 11'-3" |
| Exterior Width (w/o mirrors) | 94" |
| Interior Height | 82" |
| Awning Size | 16'-5" |
| Fuel (gal) | 55 |
| LPG (lbs) | 40.9 |
| Fresh/Waste/Gray Water (gal) | 42 / 30 / 40 |
| Water Heater (gal) | 6 |
| Furnace (BTUs) | 30,000 |
| Exterior Storage Capacity (cu. ft.) | 63.5 |

24.1

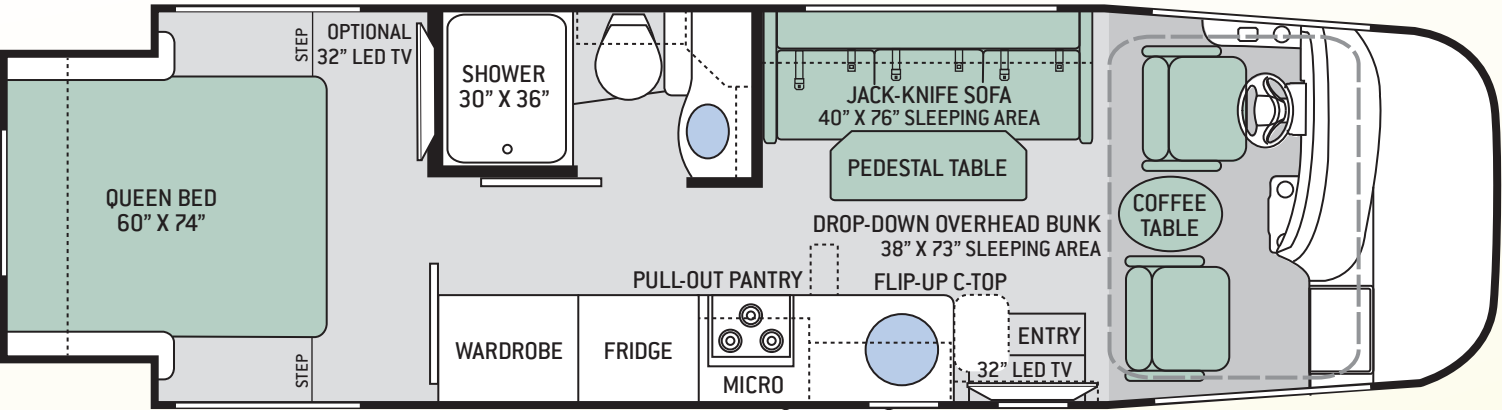


OPTIONAL EXTERIOR 32" LED TV

25.2

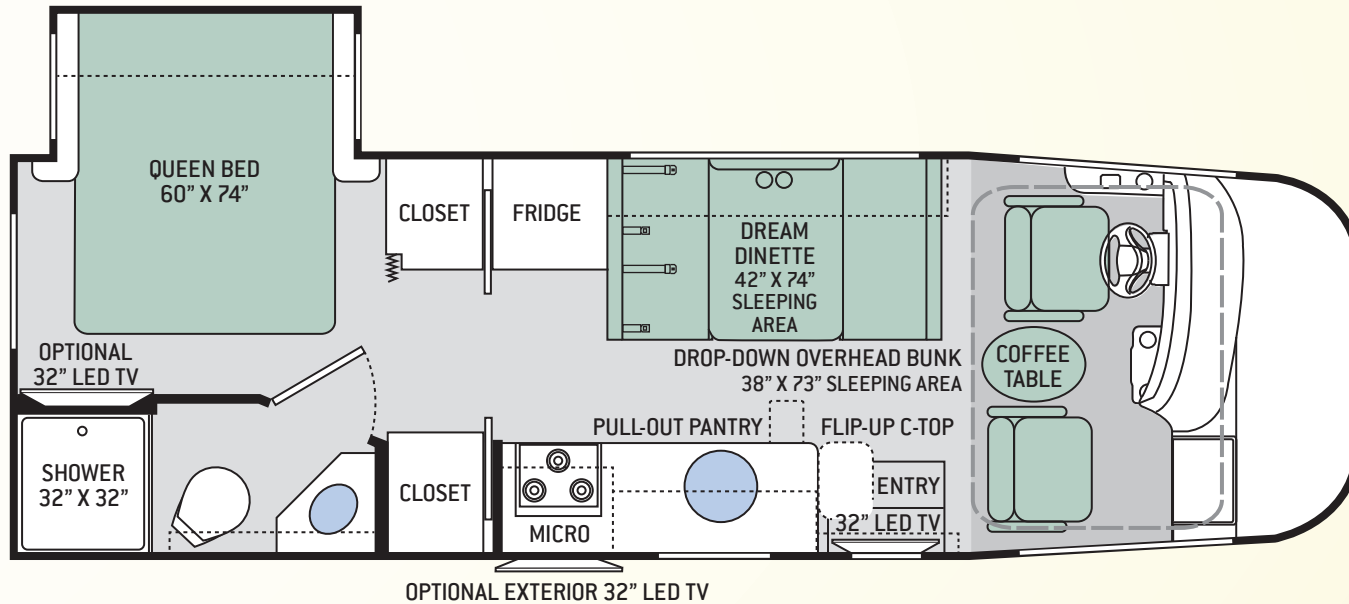
| | |
|-------------------------------------|--------------|
| Chassis | Ford |
| Gross Vehicle (GVWR) | 12,500 |
| Gross Combined (GCWR) | 18,500 |
| Wheel Base | 194" |
| Exterior Length (w/o ladder) | 26'-6" |
| Exterior Height (w/AC) | 11'-3" |
| Exterior Width (w/o mirrors) | 94" |
| Interior Height | 82" |
| Awning Size | 18' |
| Fuel (gal) | 55 |
| LPG (lbs) | 40.9 |
| Fresh/Waste/Gray Water (gal) | 39 / 30 / 40 |
| Water Heater (gal) | 6 |
| Furnace (BTUs) | 30,000 |
| Exterior Storage Capacity (cu. ft.) | 47 |

25.2



OPTIONAL EXTERIOR 32" LED TV

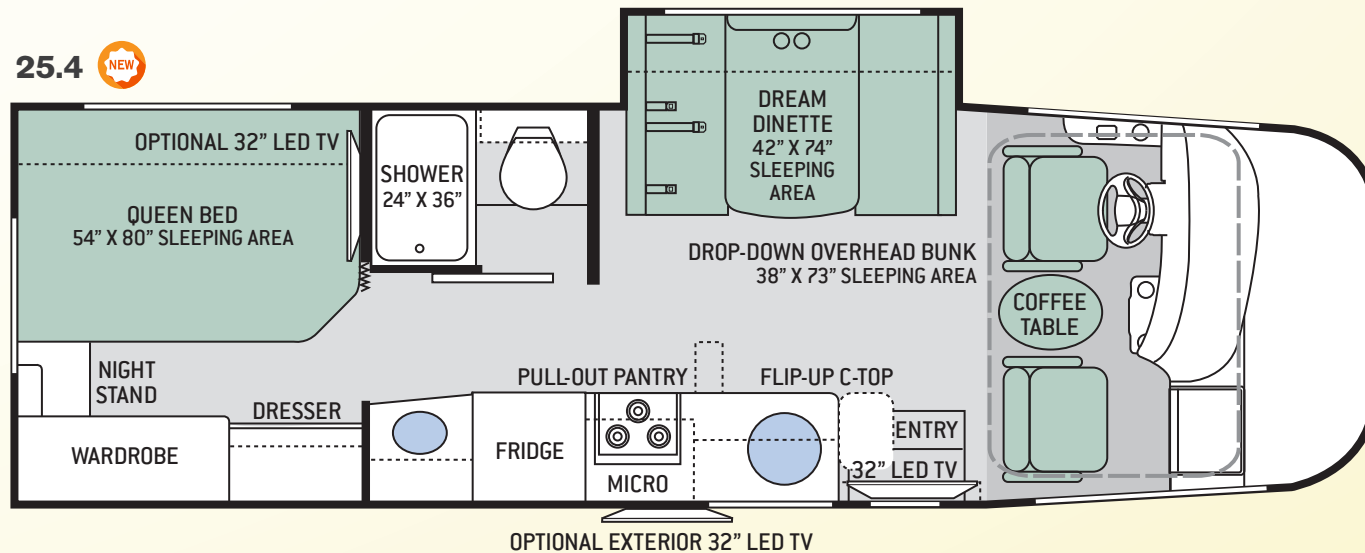
25.3



25.3

| | |
|-------------------------------------|--------------|
| Chassis | Ford |
| Gross Vehicle (GVWR) | 12,500 |
| Gross Combined (GCWR) | 18,500 |
| Wheel Base | 188" |
| Exterior Length (w/o ladder) | 26'-6" |
| Exterior Height (w/AC) | 11'-3" |
| Exterior Width (w/o mirrors) | 94" |
| Interior Height | 82" |
| Awning Size | 18' |
| Fuel (gal) | 55 |
| LPG (lbs) | 40.9 |
| Fresh/Waste/Gray Water (gal) | 50 / 30 / 41 |
| Water Heater (gal) | 6 |
| Furnace (BTUs) | 30,000 |
| Exterior Storage Capacity (cu. ft.) | 40 |

25.4



25.4

| | |
|-------------------------------------|--------------|
| Chassis | Ford |
| Gross Vehicle (GVWR) | 12,500 |
| Gross Combined (GCWR) | 18,500 |
| Wheel Base | 188" |
| Exterior Length (w/o ladder) | 27' |
| Exterior Height (w/AC) | 11'-3" |
| Exterior Width (w/o mirrors) | 94" |
| Interior Height | 82" |
| Awning Size | 18' |
| Fuel (gal) | 55 |
| LPG (lbs) | 40.9 |
| Fresh/Waste/Gray Water (gal) | 42 / 30 / 40 |
| Water Heater (gal) | 6 |
| Furnace (BTUs) | 30,000 |
| Exterior Storage Capacity (cu. ft.) | 70 |

STANDARDS & OPTIONS

CONSTRUCTION & EXTERIOR

- Ford® E-Series Chassis – 6.8L Triton® V10 Engine, 305HP, 420 lb.-ft. Torque – TorqShift® 6-Speed Automatic with Overdrive Transmission
- Fully Welded Tubular Steel Floor System
- Fully Welded Tubular Aluminum Roof & Sidewall Cage Construction
- Vacu-Bond Laminated Roof, Walls & Floors with High-Density Block Foam Insulation
- One-Piece Fiberglass Front Cap
- One-Piece Windshield
- HD-MAX® Exterior with Graphics Package
- MEGA-Storage™ Compartment
- Rotocast Storage Compartments
- Flush Mount Radius Compartment Doors
- Power Patio Awning with Integrated LED Lighting
- Slideout Room Awning
- Roof Ladder
- Patio Light
- Rubber Tread Entry Steps
- Outside Shower
- Frameless Windows

AUTOMOTIVE & COCKPIT

- Touchscreen AM/FM Dash Radio with CD Player, Bluetooth®, Back-Up Monitor & Mirror Display
- Heated/Remote Exterior Mirrors with Integrated Side View Cameras
- Reclining/Swivel Leatherette Captain's Chairs with Stow-Away Coffee Table in Between
- Cruise Control
- Tilt Steering Wheel
- Fog Lights
- Windshield Privacy Shade
- 16" Tires with Stainless Steel Wheel Liners
- Valve Stem Extenders on Rear Tires
- 8,000-lb. Trailer Hitch
- Dash Workstation with 110-volt & 12-volt Outlets

Thor Motor Coach is the industry leader in innovative design and builds a variety of unique styles, sizes and floor plans that feel custom-made – at a truly competitive price.

IMPORTANT–PLEASE READ: This brochure reflects product design, fabrication, material, components and specifications at the date of printing, which date is disclosed below. **Please visit us online at ThorMotorCoach.com or consult with your selling dealership for the latest in standards, options, specification and technical information.** Photographs in the brochure may depict optional equipment or may only be available in certain floor plans. Components, appliances and the chassis may have been manufactured in a calendar year before the vehicle's designated model year. All capacities are approximate. The actual length of the vehicle may differ from that indicated in the brochure due to variances in the manufacturing processes and/or installed components. All dry weights are based on standard model features and do not include optional features or equipment. Component part and appliance manufacturers issue limited warranties covering portions of the vehicle not covered under the limited warranty we issue. Copyright Thor Motor Coach, Inc. © 12/15/15

INTERIOR

- Residential Vinyl Flooring Throughout (Except Cockpit Area)
- 82" Interior Ceiling Height
- LED Ceiling Lights
- Ceiling Ducted Air Conditioning System
- Metal Entry Grab Handle
- Flat Panel Cabinet Doors with Rattan Inlay & Nickel Finish Hardware
- Full Extension Ball-Bearing Metal Drawer Guides
- Leatherette Sofa with Air Bed & Removable Pedestal Table (24.1)
- Leatherette Jack-Knife Sofa & Removable Pedestal Table (25.2)
- Dream Dinette® Booth (25.3 & 25.4)
- Power Drop-Down Hide-Away Overhead Bunk with Cotton Cloud™ Mattress & Bunk Ladder
- Window Privacy Shades

INTERIOR OPTION

- 12-volt Attic Fan in Living Area

KITCHEN

- 6 cu. ft. Double Door Refrigerator
- 3-Burner Gas Cooktop
- Convection Microwave Oven
- Pressed Laminate Countertops
- Oversized Bowl Kitchen Sink with Single Handle Kitchen Faucet & Pull-Down Sprayer
- Flip-Up Countertop Extension

KITCHEN OPTION

- 3-Burner Gas Cooktop with Oven & Standard Microwave Oven

BEDROOM & BATHROOM

- Two (2) Twin Beds with Upholstered Covers – Converts to King Size Bed (24.1)
- Queen Size Bed (25.2 & 25.3)
- Full Size Bed (25.4)

- Designer Headboard (24.1 & 25.3)
- Solid Surface Countertop (24.1 Bathroom Only)
- Foot Flush Porcelain Toilet
- Power Vent in Bathroom
- Shower with Curved Rod & Curtain*

BEDROOM & BATHROOM OPTION

- 12-volt Attic Fan in Bedroom

ENTERTAINMENT

- 32" LED TV in Living Area
- DVD Ready in Bedroom
- Bluetooth® Coach Radio System in Bedroom with Exterior Speakers
- Power Charging Center for Electronics
- TV Antenna & Booster
- Digital TV Antenna*
- Cable TV Ready

ENTERTAINMENT OPTIONS

- 32" LED TV in Bedroom
- Exterior 32" LED TV

ELECTRICAL & PLUMBING

- Cummins Onan® RV QG 4000 Gas Generator
- 30-amp Detachable Shoreline Power Cord
- Automatic Shoreline-to-Generator Transfer Switch
- 13,500 BTU Roof Front Air Conditioner
- Emergency Start Switch
- Battery Disconnect Switch
- 6-gallon DSI Gas/Electric Water Heater
- Water Heater Bypass System
- Systems Control Center

ELECTRICAL & PLUMBING OPTIONS

- 15,000 BTU Roof Front Air Conditioner
- Second Auxiliary House Battery
- Holding Tanks with Heat Pads

*INCLUDED ON UNITS BUILT AFTER 10/01/15

Colton RV
North Tonawanda, NY 14120
(716) 694-0188
(800) 628-4889
www.ColtonRV.com

YOUR LOCAL THOR MOTOR COACH DEALER



Colton RV
Orchard Park, NY 14127
(716) 957-3250
(800) 628-4889
www.ColtonRV.com



Made to fit.

P.O. Box 1486, Elkhart, IN 46515
Sales Department: 800.860.5658
Customer Service: 877.855.2867

thormotorcoach.com/vegas