



ELECTRIC BLUE **HD**



SEMINOLE RED **HD**



TRUE FLAT FLOOR FOUNDATION

Partnering with MORryde[®] International, we've taken our chassis foundation and substructure to the next level. Our True Flat Floor Foundation is manufactured to precise tolerances, and our assembly process is second to none.



DESERT TRAIL



FORGED STEEL

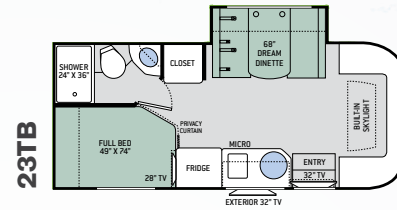


BEECHWOOD

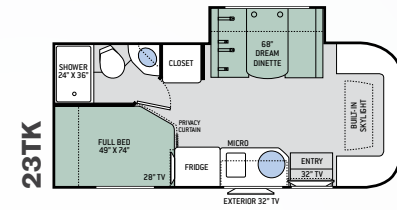
SILVER OAK

Colton RV & Marine
3122 Niagara Falls Blvd
North Tonawanda, NY 14120
(716) 694-0188
www.ColtonRV.com

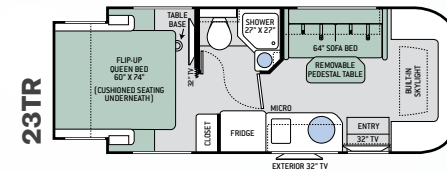
Colton RV & Marine
3443 Southwestern Blvd.
Orchard Park, NY 14127
(716) 957-3250
www.Coltonrv.com



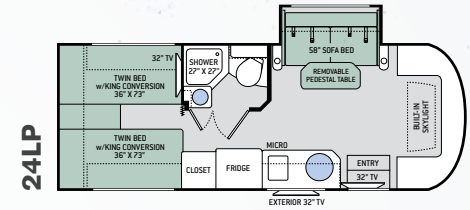
23TB



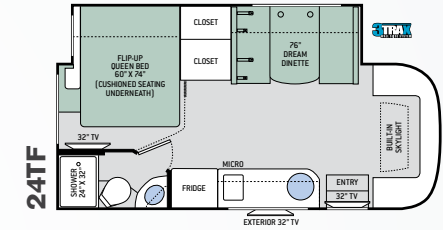
23TK



23TR



24LP



24TF



Thinking about buying a new coach? Have a question about one of our motorhomes? Trying to find a dealer near you?

Our Coach Link support team is here to help you in your purchase of a new motorhome! This dynamic team focuses directly on helping you find the answers you need to get you behind the wheel of one of our great new motorhomes. Call 800.860.5658 or visit us online at thormotorcoach.com.



Featured Highlights

CONSTRUCTION & EXTERIOR

- Ford® Transit Chassis with 3.2L I-5 Power Stroke® Turbo Diesel, 185HP & 350 lb.-ft. Torque (23TB, 23TK & 23TR)
- Mercedes-Benz® Sprinter Chassis with 3.0L V6, 188HP & 325 lb.-ft. Torque (24LP & 24TF)
- Premium One-Piece TPO Roof
- One-Piece Fiberglass Front Cap with Integrated Wing Walls
- Fiberglass Upper & Lower Rear Caps
- Exterior Courtesy Lights Over Cab Doors
- Built-In Skylight with Electric Shade
- Partial-Paint on HD-MAX® Exterior with Graphics Package
- Electric Stabilizing System (24TF)
- Lighted Rotocast Storage Compartments
- Flush Mount Radius Compartment Doors
- Power Patio Awning with Integrated LED Lighting
- Slideout Room Topper Awning(s)
- Electric Entry Step (24LP & 24TF)
- Exterior Grab Handle
- Roof Ladder (23TB, 23TK, 24LP & 24TF)
- Frameless Windows
- 5,000-lb. Trailer Hitch with 7-Pin Round Connector

AUTOMOTIVE & COCKPIT

- AM/FM Dash Radio with SYNC®, Navigation, 6.5" Color Multi-Function Display, Media Hub HD & SiriusXM® Capability (23TB, 23TK & 23TR)
- AM/FM Dash Radio with CD Player & Navigation (24LP & 24TF)

- Rear View Mirror w/Back-Up Monitor (23TB, 23TK & 23TR)
- Back-Up Monitor (24LP & 24TF)
- Deluxe Heated/Remote Exterior Mirrors
- Lane-Keeping System (23TB, 23TK & 23TR)
- Leatherette Captain's Chairs – Passenger Chair Swivels - Includes One Filler Cushion (23TB, 23TK & 23TR)
- Leatherette Swivel Driver/Passenger Captain's Chairs - Includes Two Filler Cushions (24LP & 24TF)
- Emergency Engine Start Switch (23TB, 23TK & 23TR)
- Cruise Control
- Map Light
- Tilt Leather Steering Wheel with Audio Buttons to Control Dash Radio
- Windshield Privacy Curtain
- Power Windows and Door Locks
- Keyless Entry System
- Wood Dash Applique
- Cockpit Carpet Mat
- Stainless Steel Wheel Liners (24LP & 24TF)
- Aluminum Wheels (23TB, 23TK & 23TR)

INTERIOR

- Rubber Tread Entry Steps with Lighted Step Well
- Residential Vinyl Flooring
- 80" Interior Ceiling Height
- LED Lighting
- Ceiling Ducted Air Conditioning System
- Leatherette Jack-Knife Sofa & Removable Pedestal Table with Cup Holders (23TB & 23TR)

- Leatherette Tri-Fold Sofa & Removable Pedestal Table with Cup Holders (24LP)
- Leatherette Dream Dinette® Booth (23TK & 24TF)
- Cup Holders Next to Sofa (23TB & 23TR)
- Pressed Laminate Countertops
- Euro-Style Cabinet Doors w/Soft Close Hidden Hinges & Nickel Finish Hardware
- Full Extension Metal Ball-Bearing Drawer Guides
- Premium Window Privacy Roller Shades
- Leatherette Tri-Fold Sofa and Removable Pedestal Table with Cup Holders (24LP)

INTERIOR OPTION

- Leatherette Theater Seating with Footrests and Removable Pedestal Table with Cup Holders (24LP)

KITCHEN

- 3-Way (LP/120-volt/12-volt) Refrigerator with Stainless Steel Door Inserts
- Two Burner Gas Cooktop with Glass Cover & Electric Start
- Protective Cover & Task Lighting Above Cooktop
- Convection Microwave
- Large Undermount Stainless Steel Single Bowl Sink w/Cover & Single Handle Kitchen Faucet w/Pull-Down Sprayer
- Kitchen Waste Basket
- 12-volt Fan

BEDROOM & BATHROOM

- Flip-Up Queen Size Bed with Reversible Mattress & Cushioned Seating Underneath (23TB, 23TR & 24TF)
- Full Size Bed (23TK)
- Two (2) Twin Sofa Beds with Upholstered Covers & King Conversion (24LP)
- Bedroom Charging Station with Dedicated CPAP Outlet and Storage Location
- Pedestal Table Base in Bedroom (23TB & 23TR)
- Designer Headboard, Bedspread & Pillow Shams
- Pleated Privacy Door in Bedroom (23TR & 24LP)
- Privacy Curtain in Bedroom (23TB, 23TK & 24TF)
- Shower with Deluxe Curtain & Curved Rod
- Robe/Towel Hooks in Bathroom
- Foot Flush Toilet
- Stainless Steel Bathroom Sink
- Power Vent in Bathroom

BEDROOM & BATHROOM OPTION

- 12-volt Attic Fan with Cover in Bedroom (23TB, 23TK, 24LP & 24TF)

ENTERTAINMENT

- 32" TV in Living Area (23TB, 23TK, 23TR, 24LP & 24TF)
- 32" TV in Bedroom (23TB, 23TR, 24L & 24TF)
- 28" TV in Bedroom (23TK)
- Blu-Ray Player in Living Area

- Exterior 32" TV on Manual Swivel with Bluetooth® Sound Bar
- Cable TV Ready
- Digital TV Antenna
- Bluetooth® Coach Radio System in Living Area
- Power Charging Center for Electronics with Safety Net

ELECTRICAL & PLUMBING

- Onan® RV QG 3600 LP Generator
- 30-amp Detachable Shoreline Power Cord
- Automatic Shoreline-to-Generator Transfer Switch
- Multiplex Wiring Control System with 7" Touchscreen
- Battery Disconnect Switch
- Second Auxiliary House Battery
- 13,500 BTU Low-Profile Air Conditioner
- Exterior LP Connection
- Solar Charge Controller - Solar Panel Ready
- Tankless Water Heater
- 1" Fresh Water Tank Drain
- 360° Siphon RV Holding Tank Vent Cap
- Holding Tanks with Heat Pads
- Black Tank Flush System
- Outside Shower
- Systems Control Center

ELECTRICAL & PLUMBING OPTIONS

- Onan® RV QD 3200 Diesel Generator (24LP & 24TF)
- 15,000 BTU Low-Profile Air Conditioner with Heat Pump IPO Standard Air Conditioner

For a complete listing of available features, visit thormotorcoach.com/gemini.

	23TB	23TK	23TR	24LP	24TF
Chassis	Ford Transit	Ford Transit	Ford Transit	Mercedes-Benz Sprinter	Mercedes-Benz Sprinter
Gross Vehicle (GVWR)	10,360	10,360	10,360	11,030	11,030
Gross Combined (GCWR)	13,500	13,500	13,500	15,250	15,250
Wheel Base	156"	156"	156"	170.3"	170.3"
Exterior Length (w/o ladder)	23'-6"	23'-6"	23'-6"	26'-0"	25'-0"
Exterior Height (w/AC)	10'-5"	10'-5"	10'-5"	10'-9"	10'-9"
Exterior Width (w/o mirrors)	90"	90"	90"	90"	90"
Interior Height (living area)	80"	80"	80"	80"	80"
Awning Size	14'	14'	14'	16'-6"	15'-6"
Fuel (gal)	25	25	25	26.4	26.4
LPG (lbs)	68	68	68	68	68
Fresh/Waste/Gray Water (gal)	31 / 19.5 / 37	30 / 28.5 / 19.5 & 18	31 / 28.5 / 19.5 & 18	30 / 25 / 27	30 / 24.5 / 38
Water Heater (gal)	Instant Tankless	Instant Tankless	Instant Tankless	Instant Tankless	Instant Tankless
Furnace (BTUs)	19,000	19,000	19,000	19,000	19,000
Exterior Storage Capacity (cu. ft.)	16.2	29	25.3	50.6	50
Hitch Weight Rating (lbs)	5,000	5,000	5,000	5,000	5,000



Made to fit.

P.O. Box 1486, Elkhart, IN 46515 Sales Department: 800.860.5658

thormotorcoach.com/gemini



IMPORTANT—PLEASE READ: This brochure reflects product design, fabrication, material, components and specifications at the date of printing, which date is disclosed below. Please visit us online at ThorMotorCoach.com or consult with your selling dealership for the latest in standards, options, specification and technical information. Photographs in the brochure may depict optional equipment or may only be available in certain floor plans. Components, appliances and the chassis may have been manufactured in a calendar year before the vehicle's designated model year. All capacities are approximate. The actual length of the vehicle may differ from that indicated in the brochure due to variances in the manufacturing processes and/or installed components. All dry weights are based on standard model features and do not include optional features or equipment. Component part and appliance manufacturers issue limited warranties covering portions of the vehicle not covered under the limited warranty we issue. Copyright Thor Motor Coach, Inc. © MY 04/13/2018