

SALEM

BY FOREST RIVER

SALEM

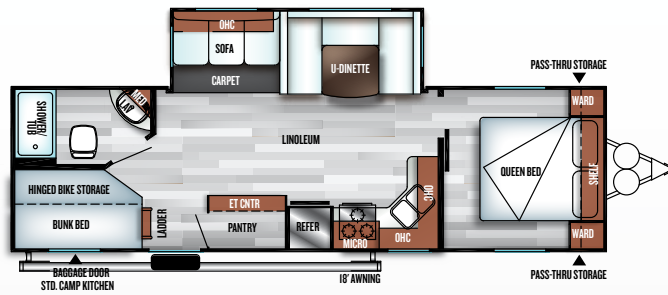




2

SHOWN WITH CUSTOMER-SUPPLIED TV

SHOWN IN MINERAL



27DBK

FAMILY FRIENDLY TOWABLE UNIT

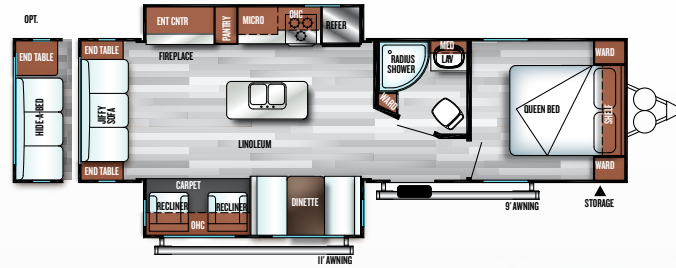
Comfort and Convenience:

Massive entry closet, fold-up bunk for additional storage, and perfect TV seating for those rare times you are “stuck inside”, this unit is perfect for a family that just wants to “get away”.





SHOWN IN OYSTER



27REI

REAR LIVING COUPLE'S COACH

Just the two of us.

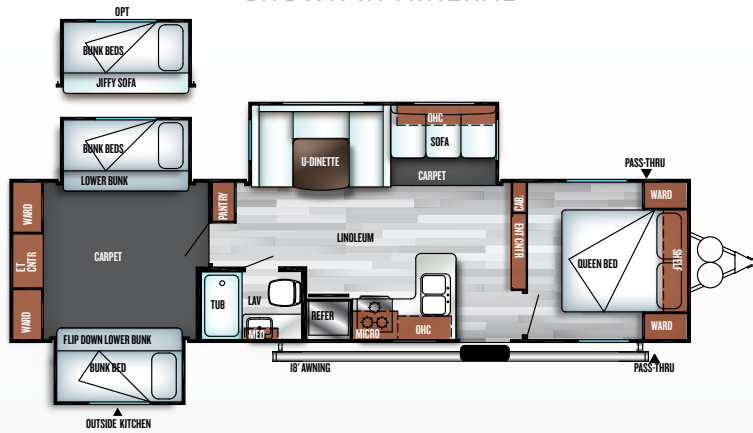
Enjoy your time away, in this incredibly spacious coach with a beautiful rear living area and maximized storage space.



SHOWN WITH CUSTOMER-SUPPLIED TV



SHOWN IN MINERAL



31KQBTS

SPACIOUS FAMILY UNIT

Large Scale Towable Convenience. What amenities would you like for your family? This has it all, such as a massive room for children or guests with tremendous storage, TV hookups, and tons of sleeping room. With a standard outside kitchen, the versatility and convenience of this beautiful trailer is unparalleled.



OUTSIDE KITCHEN



SHOWN WITH CUSTOMER-SUPPLIED TV IN BUNK ROOM



LED Lights

16 x 24 Residential Style Cabinets with Glass Inserts and Base Shelves (Where applicable)

80" CEILING HEIGHT

Stainless Steel Appliance Package

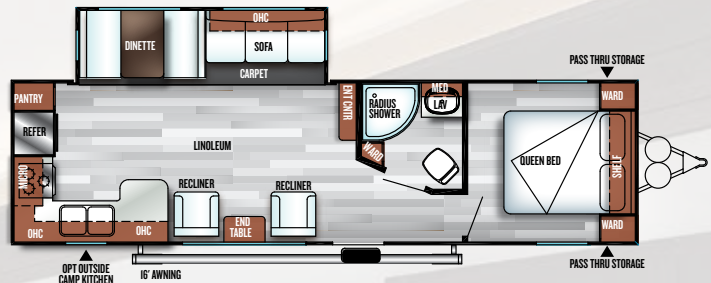
LG® Solid Surface Countertops

Thomas Payne Collection Recliners

Beauflor® Linoleum Scratch, Tear, and Cold, Crack Resistant Flooring

Full Extension, Extra-Deep Pot and Pan Drawer

Modern Roller Shades



27RKSS PICTURED

INTERIOR FEATURES

SOME FEATURES SHOWN HAVE LIMITED AVAILABILITY.

27RKSS PICTURED



1



2



3



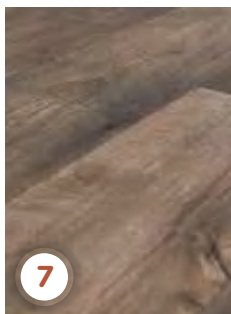
6



4



5



7



8



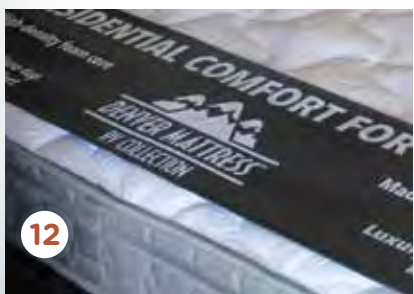
11



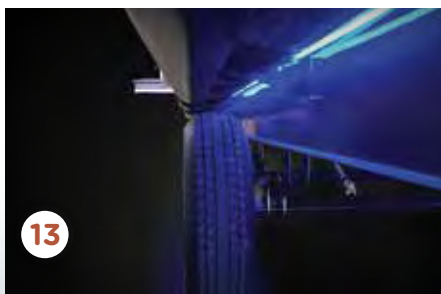
9



10



12



13

SALEM

POPULAR FEATURES

MORE REASONS WHY PEOPLE CHOOSE SALEM

1. Over Slide LED Accent Lighting (Limited Time Options*)
2. Full Extension Ball Bearing Drawer Guides
3. Shoe Nook (Most Models)
4. Extra Large Pass-Through Storage
5. Bluetooth Stereo with Remote (Limited Time Options*)
6. NEW Deluxe Entertainment Center with Residential Entry Into Master Bedroom. Where applicable (Shown with customer supplied TV)
7. Beauflor® One Piece Plank Wood Linoleum Flooring
8. NEW SolidStep® Triple Step with Double Width Entry Step. (Limited Time Options*)
9. LG® Solid Surface Countertops (Limited Time Options*)
10. High Rise Spring Faucet
11. Optional 10.7 cu. ft. Whirlpool® Refrigerator with Power Inverter
12. Denver Mattress with Pillow Top in Master Bed (Limited Program Option)
13. Blue LED Undercarriage Lighting (Limited Time Options*)

* See your dealer for more details about our Limited Time Options



CONSTRUCTION BUILT TO LAST.

- 1 2" x 3" floor joists 12" on center
- 2 2" wall studs 16" or less on center
- 3 30" fiberglass radius entry door
- 4 Aluminum siding
- 5 5" bowed truss roof rafters
- 6 One piece seamless roof (12 yr. manufacturer defect warranty)
- 7 R-7 fiberglass insulation throughout
- 8 Extra large full pass-thru storage
- 9 Smooth rolled skirting
- 10 In floor ducted heat
- 11 Diamond plate rockguard
- 12 3/8" roof decking (full walk-on roof)
- 13 LP bottle cover w/ easy access
- 14 13.5K ducted roof, high output AC w/ quick cool
- 15 Stain resistant carpet
- 16 One piece linoleum flooring
- 17 Safety glass windows
- 18 A/C ducts
- 19 "Darco" anti-puncture underbelly wrap
- 20 5/8" Tongue and Groove Plywood Floor Decking



FUNCTIONAL, QUALITY STANDARDS

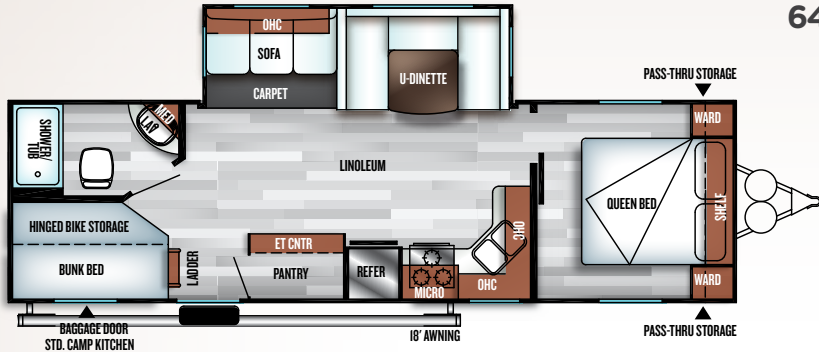
At Salem your satisfaction is serious business and it shows. Our commitment to your satisfaction includes:

A: 5/8" Tongue and Groove Plywood Flooring System

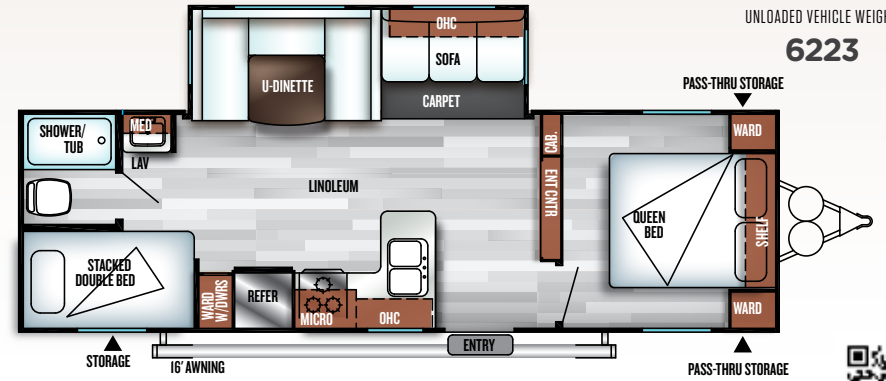
B: 6 gallon GE DSI water heater with Quick Recovery

C: Central Switch Command Center

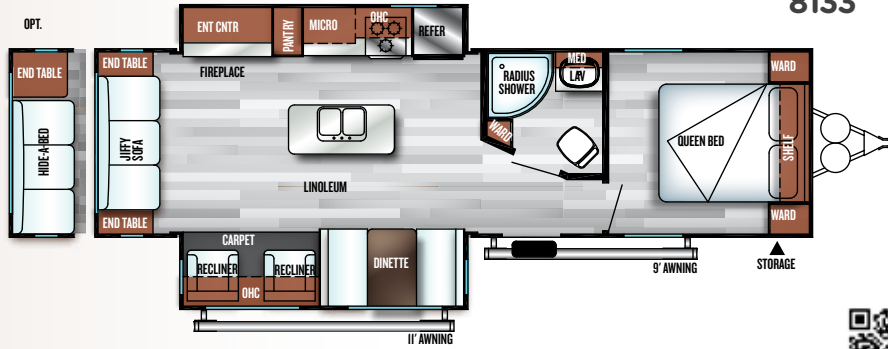
27DBK
UNLOADED VEHICLE WEIGHT:
6418



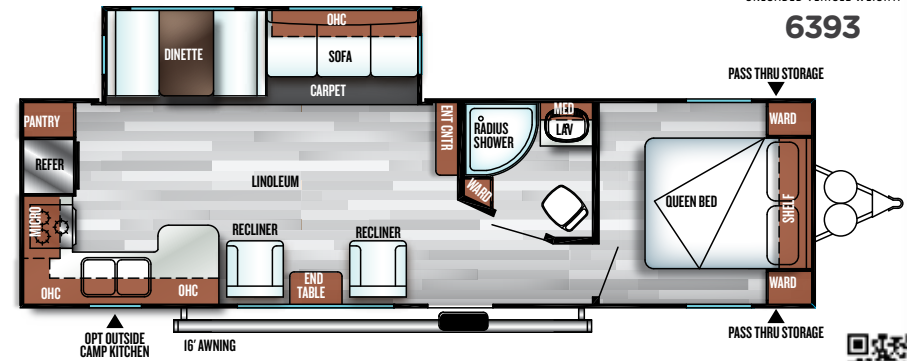
27DBUD
UNLOADED VEHICLE WEIGHT:
6223



27REI
UNLOADED VEHICLE WEIGHT:
8133



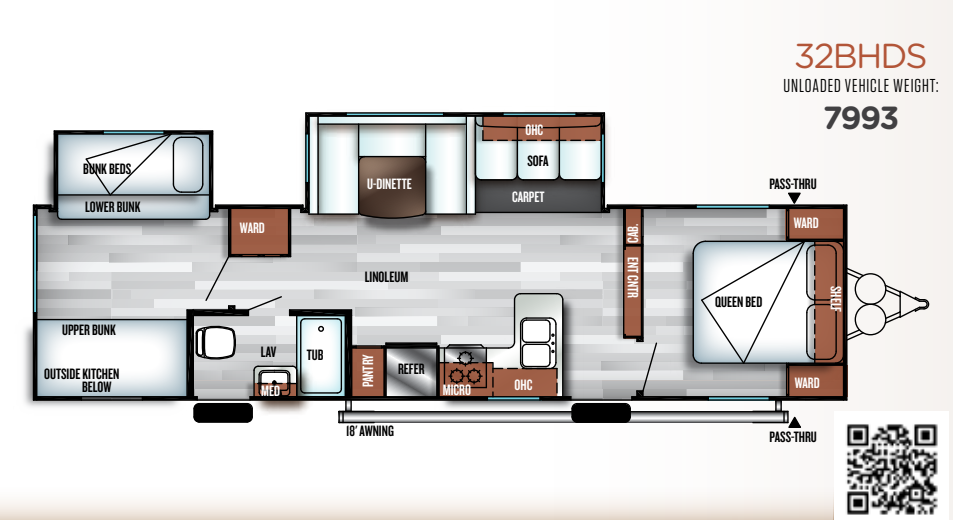
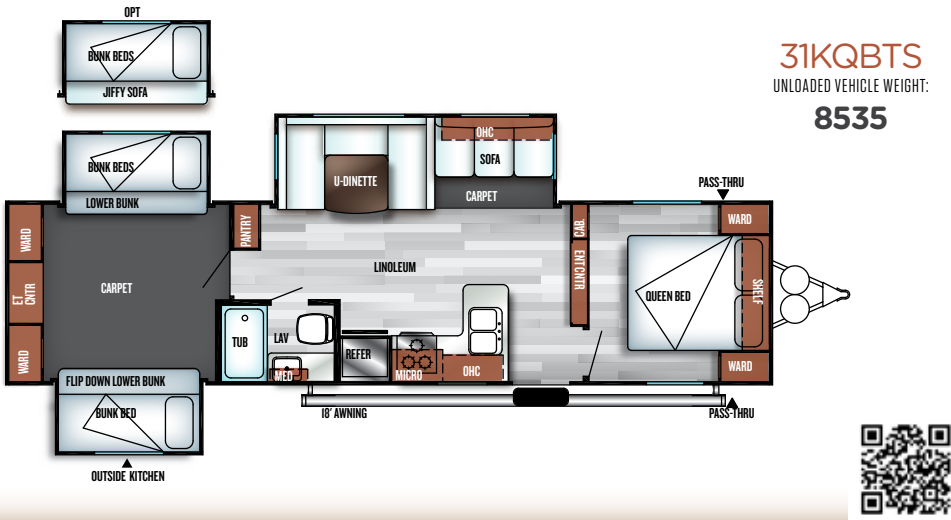
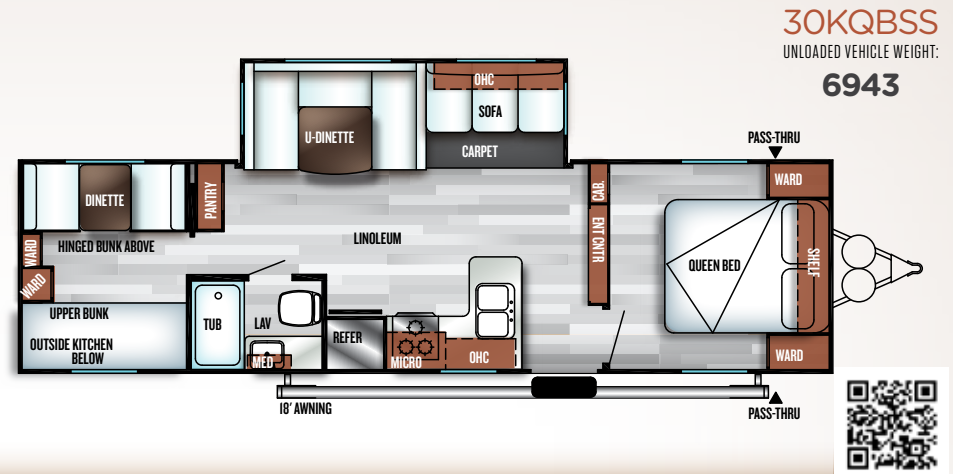
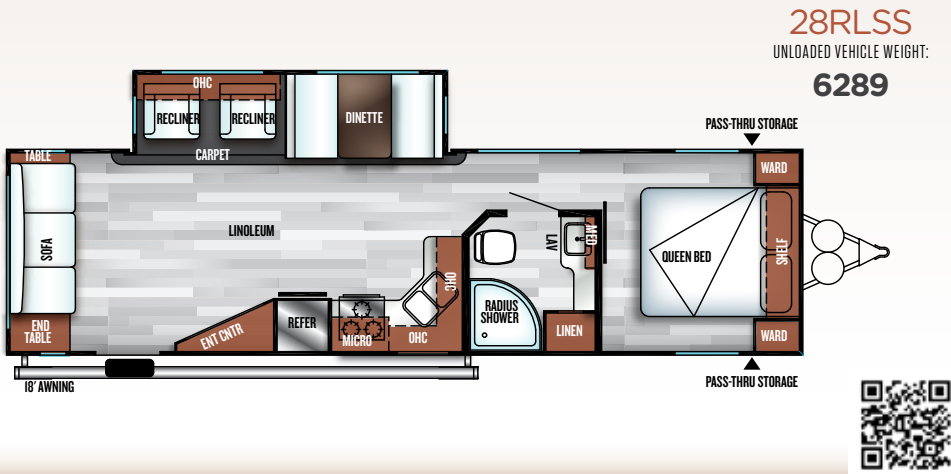
27RKSS
UNLOADED VEHICLE WEIGHT:
6393



SALEM
TRAVEL TRAILERS

FLOORPLANS & SPECIFICATIONS





	27DBK	27DBUD	27REI	27RKSS	28RLSS	30KQBSS	31KQBTS	32BHDS
HITCH WEIGHT (LBS.)	701	772	920	720	762	899	793	859
AXLE WEIGHT (LBS.)	5679	5392	7175	5635	5589	5985	7109	7096
UNLOADED VEHICLE WEIGHT (LBS.)	6418	6223	8133	6393	6289	6943	8535	7993
CARGO CARRYING CAPACITY (LBS.)	1283	1549	1747	1327	1373	2756	1813	1826
EXTERIOR LENGTH (LBS.)	32' 0"	29' 6"	33' 1"	33' 3"	34' 1"	33' 0"	36' 6"	35' 8"
EXTERIOR HEIGHT (LBS.)	11' 4"	11' 2"	11' 5"	11' 2"	11' 5"	11' 2"	11' 3"	11' 2"
FRESH WATER (GAL.)	39	39	39	39	39	39	39	39
BLACK WATER (GAL.)	30	30	27	27	30	27	27	30
GREY WATER (GAL.)	60	27	38	54	30	57	54	57
TIRE SIZE (IN.)	15	15	15	15	15	15	15	15

SALEM CRUISE LITE FLOORPLAN KEY

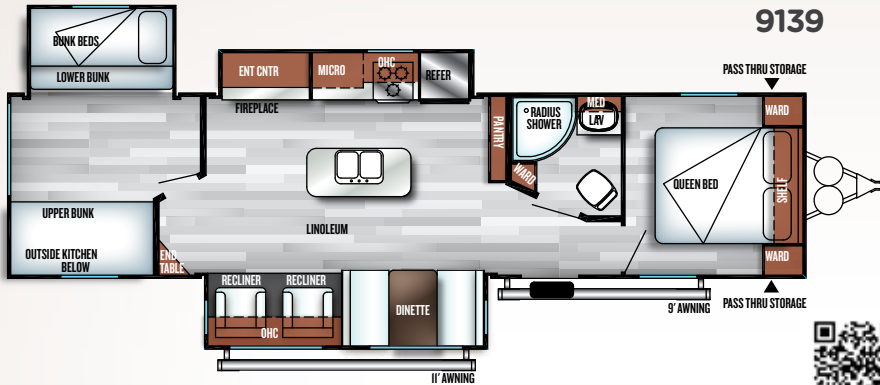
Pillows and blankets shown on beds and bunks are for demonstration purposes only and do not come with your new coach.

- OHC
OVERHEAD CABINET
- MICRO
MICROWAVE
- WARD
WARDROBE
- LAV
BATHROOM SINK

32BHI

UNLOADED VEHICLE WEIGHT:

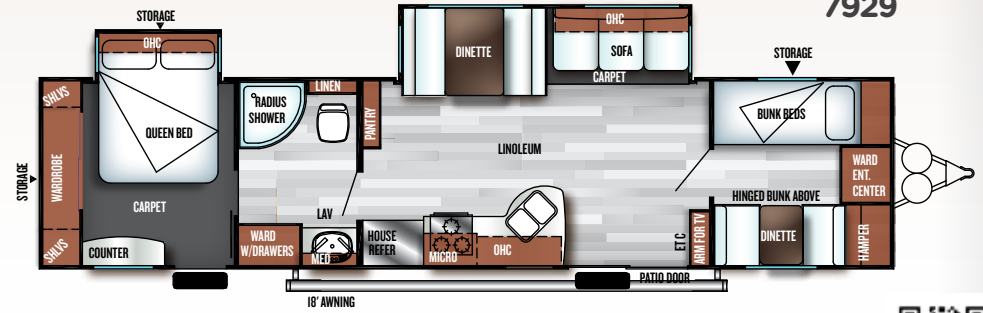
9139



36BHBS

UNLOADED VEHICLE WEIGHT:

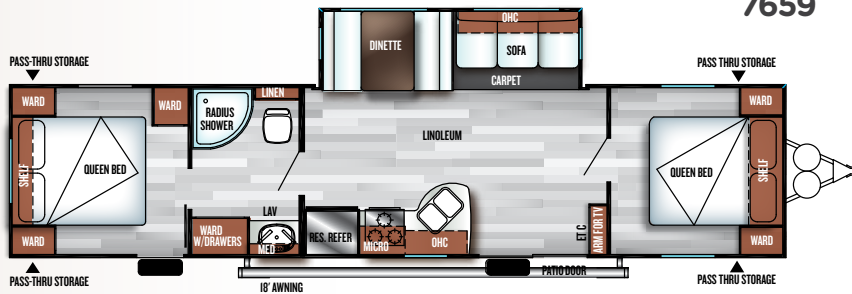
7929



37BHSS2Q

UNLOADED VEHICLE WEIGHT:

7659



	32BHI	36BHBS	37BHSS2Q
HITCH WEIGHT (LBS.)	1092	720	970
AXLE WEIGHT (LBS.)	8009	7171	6630
UNLOADED VEHICLE WEIGHT (LBS.)	9139	7929	7659
CARGO CARRYING CAPACITY (LBS.)	2153	1751	2271
EXTERIOR LENGTH (LBS.)	37' 6"	36' 7"	39' 0"
EXTERIOR HEIGHT (LBS.)	11' 7"	11' 2"	11' 2"
FRESH WATER (GAL.)	39	39	39
BLACK WATER (GAL.)	27	27	27
GREY WATER (GAL.)	68	30	30
TIRE SIZE (IN.)	15	15	15



SALEM STANDARDS & OPTIONS

CONSTRUCTION & EXTERIOR

- 5/8" tongue & groove plywood floor decking
- Full walk on one-piece seamless SuperFlex® roof w/ 12 year manufacturer defect warranty
- Extra large full pass through storage (Per floorplan)
- Cold crack and mildew resistant vinyl patio awning
- Safety glass windows
- Metal framed 30" smooth radius corner fiberglass main entry door
- Powder coated I-beam frame
- Cambered chassis
- 16-gal. per hour Gas/Electric quick recovery DSI water heater
- Water heater by-pass
- Nitrogen filled tires
- 2" wall construction, 16" (or less) on center
- R-7 fiberglass insulation throughout
- 13 ply cross micro-laminated beam header above slide out
- Triple seal slide out system
- Flush floor electric slide out systems
- Swing arm entry assist handle
- Two marine grade exterior speakers
- Aerodynamic front radius profile
- Smooth aluminum front cap
- One-piece slip-resistant Beauflor® vinyl flooring

KITCHEN

- **NEW** Mortise and tenon shaker style cabinet doors
- **NEW** Hidden hinges throughout
- Dometic® double door refrigerator (2 yr. warranty)

- High rise spring faucet (Limited program option)
- Residential undermount kitchen sink
- Stainless steel finish microwave w/ carousel
- 3-Burner, high output range with oven (2 yr. warranty) Stainless steel finish on oven door
- Stainless steel finish range hood w/ 12-volt exhaust fan and light
- 27" tall overhead cabinet (Kit)
- Wood drawers w/ furniture-grade plywood sides
- Full extension ball bearing drawer guides
- Knife rack (Behind cook top)
- Shelving in overhead cabinets in kitchen
- Central switch location for command center
- Brushed stainless finish hardware
- Abundant cabinet storage
- Large pots and pans drawer under dinette

LIVING ROOM

- Recliners included in single bedroom models
- 80" interior height
- Ducted 13,500 BTU roof air conditioner w/ quick cool
- Huge storage drawer under jiffy sofa
- Booth dinette (Most models) and U-shaped dinette (Some models)
- Large dinette picture window
- Digital antenna with booster
- Bluetooth FM stereo and four cube speakers
- 25K BTU Suburban® forced air DSI furnace w/ digital thermostat (2 yr. warranty)

- In-floor ducted heat
- Cable TV hookup living room and bedroom
- Wall switch controls for ceiling lights at living room and bathroom

BEDROOM

- **NEW** Denver mattress with pillow top in master bed (Limited program option)
- Strut lifted storage area under bed (Master bedroom)
- Bedside mirrored wardrobes w/ shelf above bed
- Bedside 110-volt power outlets (2)
- Increased space at the foot of the bed (Most models)
- Solid bedroom privacy doors (Most models)
- Shoe nook at the foot of the master bed
- Bedside hamper access (Most models)

BATHROOM

- 12-volt power bath roof exhaust vent
- Foot flush toilet
- Vinyl tub surround (Radius angle showers have an enclosure) (Select floorplans)

SECURITY AND SAFETY

- LP leak detector
- Smoke detector
- Carbon monoxide detector
- Fire extinguisher
- Welded heavy duty safety chains
- Electric brakes (All wheels)
- GFI receptacles
- ANSI 119.2 certified
- Meets all national highway administration specifications
- RVIA approved product

OPTIONS

- Stabilizer jacks
- Skylight over tub
- 30-lb LP bottles w/ cover and auto change-over
- 10.7 cu. ft. Whirlpool® refrigerator with power inverter
- 15,000 BTU ducted air w/ quick cool
- Radial tires (Mandatory option)

LIMITED TIME OPTIONS

[\(Contact your local dealer for more information\)](#)

- Denver 9" pillowtop mattress
- SolidStep triple step (Main door only)
- Exterior white LED light strip under awning
- LG Solid Surface Kitchen Countertops
- Modern roller shades w/ autoStop (Living, Bed)
- Residential designer spring faucet
- Green pkg: Furrion® solar prep & LED mushroom lights
- Power awning w/ adjustable legs
- Power stab jacks and power tongue jack
- Push button remote w/ remote holster (Operates slides, stab jacks, awning and light)
- Bluetooth stereo with remote
- Furrion® backup camera prep
- LED accent pkg (Interior main slides, exterior ground effect)

[Contact your dealer for a complete list of options.](#)

THE SALEM LINE-UP

YOUR SALEM DEALER

2018

Colton RV & Marine
3122 Niagara Falls Blvd
North Tonawanda, NY 14120
(716) 694-0188
www.ColtonRV.com

Colton RV & Marine
3443 Southwestern Blvd.
Orchard Park, NY 14127
(716) 957-3250
www.Coltonrv.com



SALEM



SALEM CRUISE LITE



SALEM VILLA | VILLA ESTATE



SALEM HEMISPHERE

Specification Definitions

GVWR (Gross Vehicle Weight Rating) - is the maximum permissible weight of the unit when fully loaded. It includes all weights, inclusive of all fluids, cargo, optional equipment and accessories. For safety and product performance do NOT exceed the GVWR.

GAWR (Gross Axle Weight Rating) - is the maximum permissible weight, including cargo, fluids, optional equipment and accessories that can be safely supported by a combination of all axles.

UVW (Unloaded Vehicle Weight)* - is the typical weight of the unit as manufactured at the factory. It includes all weight at the unit's axle(s) and tongue or pin and LP Gas. The UVW does not include cargo, fresh potable water, additional optional equipment or dealer installed accessories.

*Estimated average based on standard build optional equipment.

CCC (Cargo Carrying Capacity)** - is the amount of weight available for fresh potable water, cargo, additional optional equipment and accessories. CCC is equal to GVWR minus UVW. Available CCC should accommodate fresh potable water (8.3 lbs per gallon). Before filling the fresh water tank, empty the black and gray tanks to provide for more cargo capacity.

** Estimated average based on standard build optional equipment

Each Forest River RV is weighed at the manufacturing facility prior to shipping. A label identifying the unloaded vehicle weight of the actual unit and the cargo carrying capacity is applied to every Forest River RV prior to leaving our facilities.

The load capacity of your unit is designated by weight, not by volume, so you cannot necessarily use all available space when loading your unit.

All information contained in this brochure is believed to be accurate at the time of publication. However, during the model year, it may be necessary to make revisions and Forest River, Inc., reserves the right to make all such changes without notice, including prices, colors, materials, equipment and specifications as well as the addition of new models and the discontinuance of models shown in this brochure. Therefore, please consult with your Forest River dealer and confirm the existence of any materials, design or specifications that are material to your purchase decision. Litho. U.S.A. FOR 1423 P/W: 201711.01

CUSTOMER SATISFACTION



www.ForestRiverBuyLocal.com

FREE MEMBERSHIP
to Forest River Owners' Group

www.forestriverfrog.com



Learn More

Scan this barcode using a QR Reader on your smart phone to learn more about Forest River.



A Berkshire Hathaway company.

Forest River, Inc. 55470 C.R. 1 Elkhart, IN 46515 | (574) 533-5934
www.forestriverinc.com/Salem | www.forestriveraccessories.com



PRE-DELIVERY INSPECTION FACILITY

20,000 square feet of quality assurance. The bare essentials for a premium product. This state-of-the-art facility gives immediate daily feedback to production for quality assurance in every unit built.