



COACHMEN CATALINA

2025 PRODUCT OFFERING



[COACHMENRV.COM/CATALINA](https://coachmenrv.com/catalina)

LEGACY EDITION

243 RBS

DRY WEIGHT: **5,588**
EXT. LENGTH: **28' 9"**



283 RKS

DRY WEIGHT: **6,635**
EXT. LENGTH: **33' 8"**



293 TQBSCK

DRY WEIGHT: **7,521** EXT. LENGTH: **36' 0"**



313 RLTS

DRY WEIGHT: **8,375** EXT. LENGTH: **36' 5"**



263 BHSCK

DRY WEIGHT: **6,532**
EXT. LENGTH: **32' 9"**



NEW 283 EPIC

DRY WEIGHT: **7,405** EXT. LENGTH: **35' 6"**



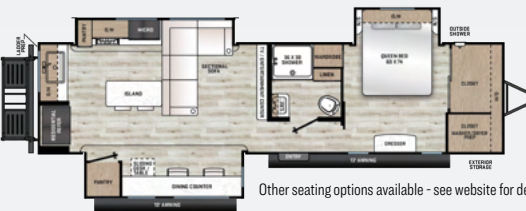
303 RKDS

DRY WEIGHT: **8,042** EXT. LENGTH: **36' 11"**



NEW 323 MAZE

DRY WEIGHT: **TBD** EXT. LENGTH: **TBD**



Other seating options available - see website for details.

263 FKDS

DRY WEIGHT: **6,869**
EXT. LENGTH: **30' 0"**



293 QBCK

DRY WEIGHT: **6,883**
EXT. LENGTH: **34' 2"**



323 BHDSC

DRY WEIGHT: **7,864**
EXT. LENGTH: **36' 8"**



LEGACY EDITION

343 BHTS

DRY WEIGHT: **8,620**
EXT. LENGTH: **38' 4"**



343 BHTS (2Q) OR (DEN)

DRY WEIGHT: **8,476**
EXT. LENGTH: **38' 6"**



TRAILBLAZER

NEW 18 TH

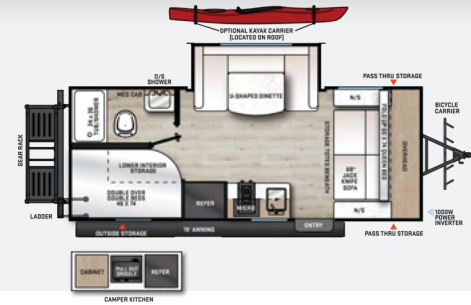
DRY WEIGHT: **4,950**
EXT. LENGTH: **25' 4"**



EXPEDITION

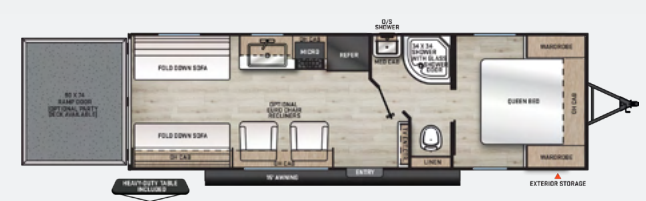
192 BHS

DRY WEIGHT: **4,595**
EXT. LENGTH: **23' 6"**



26 TH

DRY WEIGHT: **5,486**
EXT. LENGTH: **29' 10"**



27 THS

DRY WEIGHT: **7,471**
EXT. LENGTH: **33' 10"**



28 THS

DRY WEIGHT: **7,226**
EXT. LENGTH: **33' 10"**



29 THS

DRY WEIGHT: **7,082**
EXT. LENGTH: **35' 8"**



DESTINATION

NEW 42 CONDO

DRY WEIGHT: **12,715**
EXT. LENGTH: **45' 5"**



NEW 35 FME

DRY WEIGHT: **TBD** EXT. LENGTH: **TBD**



18 RDL

DRY WEIGHT: **8,324**
EXT. LENGTH: **32' 1"**



DESTINATION

39 MKTS

DRY WEIGHT: **9,409**
EXT. LENGTH: **40' 11"**



SUMMIT 7

NEW 134 BHX

DRY WEIGHT: **2,723**
EXT. LENGTH: **16' 0"**



154 RBX

DRY WEIGHT: **3,069**
EXT. LENGTH: **19' 6"**



NEW 184 BHSX

DRY WEIGHT: **3,989**
EXT. LENGTH: **23' 1"**



40 BHTS

DRY WEIGHT: **9,669**
EXT. LENGTH: **40' 11"**



NEW 134 RDX

DRY WEIGHT: **2,729**
EXT. LENGTH: **16' 0"**



154 RDX

DRY WEIGHT: **3,015**
EXT. LENGTH: **19' 6"**



184 BHS

DRY WEIGHT: **4,202**
EXT. LENGTH: **23' 1"**



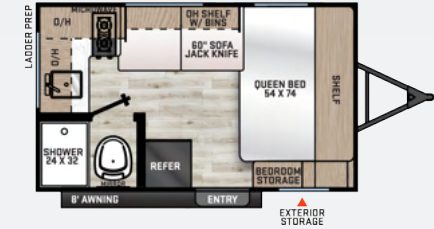
40 BHTS(2Q) OR (DEN)

DRY WEIGHT: **9,669**
EXT. LENGTH: **40' 11"**



NEW 134 RKX

DRY WEIGHT: **2,707**
EXT. LENGTH: **16' 0"**



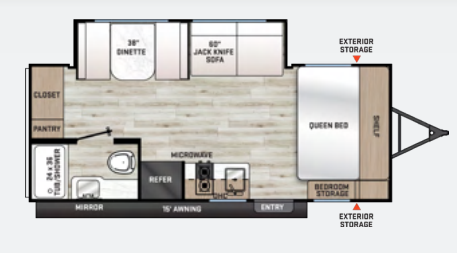
164 BHX

DRY WEIGHT: **2,969**
EXT. LENGTH: **19' 6"**

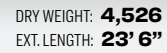


NEW 184 MKS

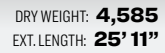
DRY WEIGHT: **TBD**
EXT. LENGTH: **TBD**



DRY WEIGHT: **4,526**
EXT. LENGTH: **23' 6"**



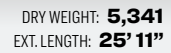
NEW 211BH



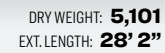
DRY WEIGHT: **4,627**
EXT. LENGTH: **25' 11"**



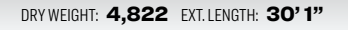
DRY WEIGHT: **5,341**
EXT. LENGTH: **25' 11"**



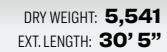
DRY WEIGHT: **5,101**
EXT. LENGTH: **28' 2"**



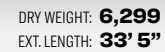
DRY WEIGHT: **4,822** EXT. LENGTH: **30' 1"**



DRY WEIGHT: **5,541**
EXT. LENGTH: **30' 5"**



DRY WEIGHT: **6,299**
EXT. LENGTH: **33' 5"**



SUMMIT SERIES 

DESTINATION SERIES

TRAIL BLAZER



COACHMEN CATALINA

EXPERIENCE THE DIFFERENCE



SUMMIT 8
SUMMIT SERIES 



SPOTLIGHT FEATURE

RADIUS LIGHTING



TRAIL BLAZER
LEGACY EDITION 

REDEFINING THE POSSIBILITIES

AUTOMATIC LEVELING SYSTEM OR POWER STAB JACK PKG OPTIONAL UPGRADES

ASK ABOUT LIMITED PROMOTIONS





GE KITCHEN APPLIANCE SUITE

ALSO INCLUDES:
GE A/C WITH HEAT PUMP
GE WATER HEATER

GE REFRIGERATOR NOT AVAILABLE ON 134 MODELS AND 154 RDX



GE LOW PROFILE HIGH-EFFICIENCY RV AC



**SUPERIOR COOLING
PERFORMANCE**



**HEAT PUMP WITH
OPERATION AS
LOW AS 25°F**



**ASK YOUR LOCAL DEALER OR
SEE OUR WEBSITE FOR OUR
IN DEPTH STANDARD AND
OPTIONAL FEATURE DETAILS**

**CHECK OUR NXG FRAMES BY NORCO
AND THE PREMIUM JBL AUDIO SYSTEM.**

NOTES

Colton RV & Marine
3122 Niagara Falls Blvd.
North Tonawanda, NY 14120
(716) 694-0188
www.ColtonRV.com

Colton RV
489 Bushkill Plaza LN #9665
Wind Gap, PA 18091
(610) 863-5239
www.ColtonRV.com



24/7 EMERGENCY ROADSIDE ASSISTANCE WITH VEHICLE PURCHASE*

TOWING
JUMP-STARTS
TIRE CHANGES
FLUID DELIVERY
LOCKOUT
SERVICE

WINCH-OUT
MOBILE MECHANIC
TECHNICAL
SUPPORT
DEALER LOCATOR
SERVICES



*VALID FOR 1 YEAR FROM DATE OF PURCHASE



PRE-DELIVERY INSPECTION FACILITY

20,000 square feet of quality assurance. The bare essentials for a premium product. This state-of-the-art facility gives immediate daily feedback to production for quality assurance in every unit built.



www.coachmenrv.com/catalina



Specification Definitions :: GVWR (Gross Vehicle Weight Rating) - is the maximum permissible weight of the unit when fully loaded. It includes all weights, inclusive of all fluids, cargo, optional equipment and accessories. For safety and product performance do NOT exceed the GVWR. // **GAWR (Gross Axle Weight Rating)** - is the maximum permissible weight, including cargo, fluids, optional equipment and accessories that can be safely supported by a combination of all axles. // **UVW (Unloaded Vehicle Weight)** - is the typical weight of the unit as manufactured at the factory. It includes all weight at the unit's axle(s) and tongue or pin and LP Gas. The UVW does not include cargo, fresh potable water, additional optional equipment or dealer installed accessories. *Estimated average based on standard build optional equipment. // **CCC (Cargo Carrying Capacity)**** - is the amount of weight available for fresh potable water, cargo, additional optional equipment and accessories. CCC is equal to GVWR minus UVW. Available CCC should accommodate fresh potable water (8.3 lbs per gallon). Before filling the fresh water tank, empty the black and gray tanks to provide for more cargo capacity. ** Estimated average based on standard build optional equipment. // Each Forest River RV is weighed at the manufacturing facility prior to shipping. A label identifying the unloaded vehicle weight of the actual unit and the cargo carrying capacity is applied to every Forest River RV prior to leaving our facilities. The load capacity of your unit is designated by weight, not by volume, so you cannot necessarily use all available space when loading your unit. // All information contained in this brochure is believed to be accurate at the time of publication. However, during the model year, it may be necessary to make revisions and Forest River, Inc., reserves the right to make all such changes without notice, including prices, colors, materials, equipment and specifications as well as the addition of new models and the discontinuance of models shown in this brochure. Therefore, please consult with your Forest River dealer and confirm the existence of any materials, design or specifications that are material to your purchase decision. Litho. U.S.A. FOR 2709 P&W: 2024.12.13