

Jayco | White Hawk Travel Trailer

WHITE HAWK

LIGHTWEIGHT LUXURY



2+3
YEAR | YEAR
WARRANTY

INTERIOR DESIGN



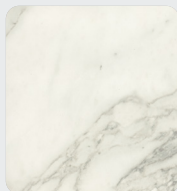
VINTAGE WASHED GREY



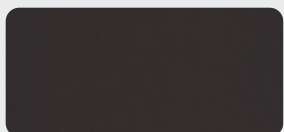
Wood



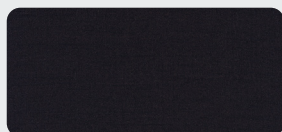
Floor



Countertop

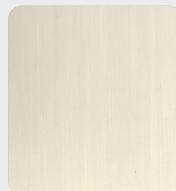


Main Fabric



Accent Fabric

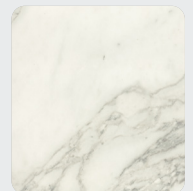
MODERN FARMHOUSE



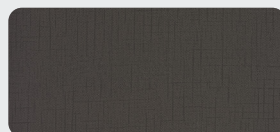
Wood



Floor



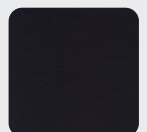
Countertop



Main Fabric

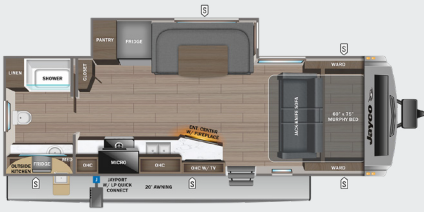


Accent Fabrics



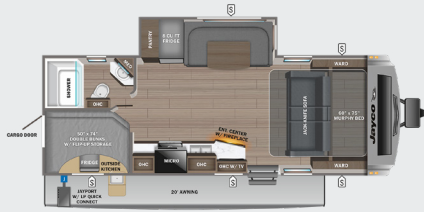
24MRB

OPTIONS: A, C, D



25MBH

OPTIONS: A, C, D



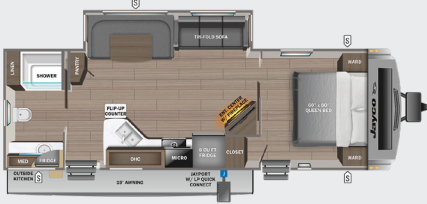
26FK

OPTIONS: C, D



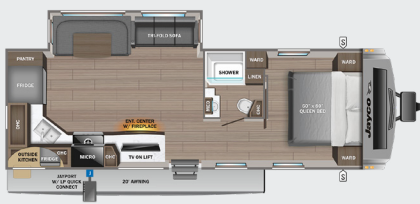
27RB

OPTIONS: A, B, C, D



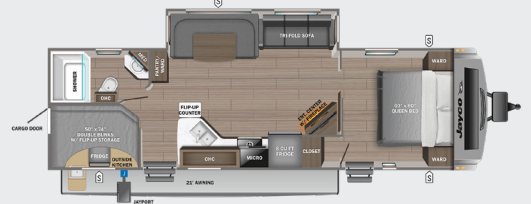
27RK

OPTIONS: A, B, C, D



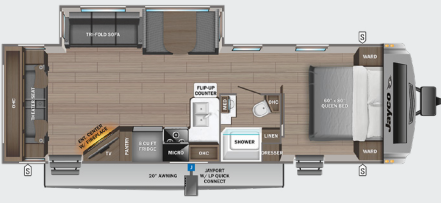
29BH

OPTIONS: A, B, C, D



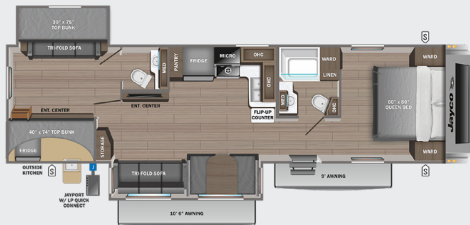
29RL

OPTIONS: B, C, D



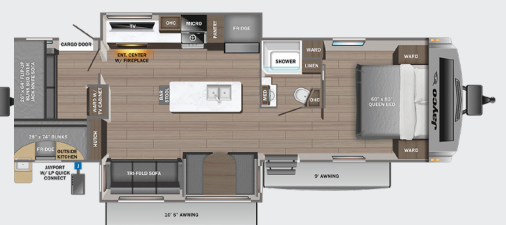
32BH

OPTIONS: A, B, C, D



32QBH

OPTIONS: A, B, C, D



32RL

OPTIONS: B, C, D



STORAGE

MICRO

MICROWAVE

OHC

OVERHEAD CABINETS

FRIDGE

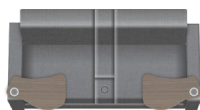
REFRIGERATOR

WARD

WARDROBE

OPTIONS

A



Theater Sofa

B



King Bed

C



Table & Chairs

D



Table, Chairs & Ottoman

STANDARDS & OPTIONS

EXTERIOR

Aerodynamic, rounded front profile with front diamond plate
 Stronghold VBL™ vacuum-bonded, laminated side and rear walls (including slideout room walls)
 Azdel laminated interior and exterior walls
 Magnum Truss™ Roof System with one piece seamless roof material
 5/8 in. tongue-and-groove plywood decked flooring
 American-made I-Beam frame with integrated A-frame
 G20 dark tinted, frameless safety-glass windows
 30 in. friction-hinged main entry doors (select models)
 Swing out grab handle
 Exterior TV bracket with 120V and cable outlets
 Outdoor camp kitchen (select models)
 Slam latches on front pass-through storage doors (select models)
 Marine-grade exterior speakers with blue LED accent lighting (2)
 Galvanized steel and impact-resistant wheel wells
 30-amp service
 Mounted camera bracket for pre-wired side and rear backup prep
 Keyed-Alike™ lock system
 Detachable power cord
 A-frame mounted solar prep
 Battery quick disconnect
 Black tank flush
 ABS propane bottle cover
 Automotive-style aluminum rims
 Spare tire with cover
 Inverter pre-wire (2 bedroom nightstand outlets, main TV and outside kitchen refrigerator (select models))
 JayPort system with outside griddle (griddle optional on 26FK, 29RL and 32RL)
 LCI Solid Step® fold down aluminum tread steps on main entry door

INTERIOR

Arched interior ceiling up to 81 in. interior height
 LED lighting throughout
 Electric fireplace
 Directional and closeable central A/C vents
 Plywood dinette, bunk and bed bases (applicable models)

Residential vinyl flooring with cold crack resistance
 High output auto-ignition 35,000 BTU furnace with wall thermostat
 Front windshield with roller shade with radiant barrier backer
 Solid hardwood cabinets with screwed and glued cabinet stiles
 Deep, split bowl, stainless steel sink with high-rise, pull-out faucet and dry rack/sink cover combo
 Decorative backsplash
 Ball-bearing drawer guides with 75 lb. capacity
 60 in. x 80 in. queen bed (60 in. x 75 in. in Murphy bed models)
 Murphy bed design allowing pass-through exterior storage access (24MRB and 25MBH)
 Fixed bunks with 120V outlet, 12V USB and cargo net (bunk models only)
 Jayco exclusive Teddy Bear "soft-touch" bunk mats (bunk models only)
 Powered roof vents in bathroom and main bedroom
 Decorative roller shades with reflective backer

CUSTOMER VALUE PACKAGE (MANDATORY)

American-made nitro-filled Goodyear® radial tires with self-adjusting brakes (made in the USA)
 On-demand tankless water heater
 55 gal. fresh water tank
 30 lb. propane bottles (2)
 Outside shower
 Power awning with LED light
 Power tongue jack
 Slide topper prep (excludes slide rooms with a fridge)
 39 in. or 50 in. LED Smart TV
 15,000 BTU A/C
 AM/FM/Bluetooth® stereo with speakers
 10 cu. ft. 12V refrigerator with black glass door inserts
 Oven with 3-burner recessed cooktop
 Microwave
 Porcelain foot flush toilet
 Rock Solid Stabilizer Jacks
 Showers with solid enclosures
 Bathroom skylight

LUXURY PACKAGE (MANDATORY)

Climate Shield™ zero-degree tested weather protection:
 - Fully enclosed and heated underbelly (ducted)
 - 35,000 BTU output furnace
 - Double layer fiberglass batt insulation in ceiling and floor
 - Double sided radiant barrier insulation (roof, floor, cap, and slide room floors)
 - PEX plumbing
 Front molded fiberglass cap with automotive-style windshield and blue LED accent lighting
 Frameless windows
 Fold-down aluminum tread entry steps (main entry), aluminum tread entry steps (second entry, select models)
 Roof-mount solar prep
 Kitchen skylight with shade
 MAXAIR power roof vent (main living area)
 JAYCOMMAND® "Smart RV" system with TPMS (Tire Pressure Monitoring System)

OPTIONS

2nd 15,000 BTU A/C (requires 50-amp service)
 50-amp service with 2nd A/C prep (required with 2nd A/C)
 Power stabilizer jacks
 120V heated tank pads
 Theater seating (select models)
 Free-standing table with 4 chairs in place of booth dinette (select models)
 Free-standing table with 2 chairs and ottoman in place of dinette (select models)
 8 cu. ft. gas/electric refrigerator with black glass door inserts
 King bed in place of queen bed (select models)
 Overlander 1 Solar Package: (1) 200W solar panel and 30-amp digital controller
 Overlander 2 Solar Package: (2) 200W solar panels, 30-amp digital controller and 1800W inverter
 Outside griddle for JayPort system (26FK, 29RL and 32RL)

*Indicates split tanks

FLOORPLAN	TOTAL EXTERIOR LENGTH	EXTERIOR WIDTH	EXTERIOR HEIGHT (WITH A/C)	INTERIOR HEIGHT	UNLOADED VEHICLE WEIGHT	DRY HITCH WEIGHT	GVWR	CARGO CARRYING CAPACITY	FRESH WATER CAPACITY	GRAY WASTE WATER CAPACITY	BLACK WASTE WATER CAPACITY	SLEEPING CAPACITY
24MRB	29' 3"	8' 0"	11' 3"	6' 9"	6,005	625	7,500	1,495	55	30.5	30.5	2-3
25MBH	30' 8"	8' 0"	11' 3"	6' 9"	6,255	785	7,750	1,495	55	30.5	30.5	6-8
26FK	31' 11"	8' 0"	11' 2"	6' 9"	6,875	810	8,500	1,625	55	71*	30.5	3-4
27RB	32' 10"	8' 0"	11' 3"	6' 9"	6,735	845	8,200	1,465	56	61*	30.5	5-6
27RK	32' 10"	8' 0"	11' 3"	6' 9"	6,655	785	8,200	1,545	55	61*	30.5	2-6
29BH	34' 9"	8' 0"	11' 2"	6' 9"	7,200	860	8,500	1,300	55	61*	30.5	8-10
29RL	35' 9"	8' 0"	11' 3"	6' 9"	7,105	835	8,750	1,645	55	61*	30.5	3-6
32BH	38' 0"	8' 0"	11' 2"	6' 9"	8,180	985	9,995	1,815	56	71*	61*	7-9
32QBH	38' 0"	8' 0"	11' 4"	6' 9"	8,165	1,075	9,750	1,585	55	71*	30.5	8-10
32RL	36' 8"	8' 0"	11' 3"	6' 9"	7,725	875	9,200	1,475	55	72*	30.5	4-6

Meet your Jayco Dealer

Colton RV & Marine
 3122 Niagara Falls Blvd.
 North Tonawanda, NY 14120
 (716) 694-0188
 www.ColtonRV.com

Colton RV
 489 Bushkill Plaza LN #966
 Wind Gap, PA 18091
 (610) 863-5239
 www.ColtonRV.com



Scan QR code for specification definitions



Some specs at the time of print may include estimates.
 For the most updated information, please visit Jayco.com

Jayco, Inc. | P.O. Box 460 | Middlebury, IN 46540
 See dealer for further information and prices. All information in this brochure and on www.jayco.com is the latest available at the time of publication approval. Jayco reserves the right to make changes and to discontinue models without notice or obligation. Photography may show optional equipment or props used for decoration purposes only. RVs built for sale in Canada may differ to conform to Canadian codes. JAYCO and the JAYCO BIRD IN FLIGHT are registered trademarks of Jayco, Inc. Printed in USA 1/23 ©2023 Jayco, Inc. 2032601.2023

Jayco - Part of Jayco Family of Companies