

# COLUMBUS BY PALOMINO



EXPLORE THE ULTIMATE FIFTH WHEEL

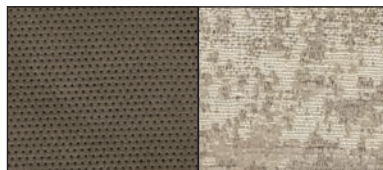
COLUMBUS BY PALOMINO





The 298RL, pictured above in Metropolitan cloth interior with Chestnut Cherry wood and wood look floor, boasts a long island providing abundant counter space. The 298RL floorplan provides many storage features as well as multiple seating options in a shorter length fifth wheel, including the chottoman (chair and ottoman in one) standard in every Columbus floorplan.

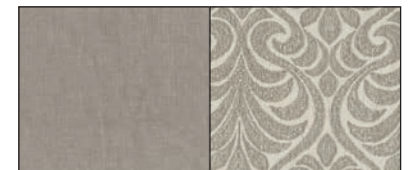
Our interior color options are shown to the right.



NEWPORT



SAVANNAH



METROPOLITAN



## EXPLORE THE ULTIMATE FIFTH WHEEL



Reinforced Dovetail Drawers



LED TV with Bluetooth Soundbar



Solid Cherry Slide Fascia

The 374BHC shown in Compass with Newport interior, Espresso Cherry wood and tile look floor, offers flexibility and space in the bunk room for the kids and a conveniently located half bath accessible from the outside. 50" TV and soundbar, stainless appliances and outside kitchen are popular standard features on this model.



The 366RL, pictured left in the optional 1492 package, with Chestnut Cherry wood and wood look floor features a super island as well as a prep sink conveniently located near the entry door for easy access from the outside kitchen. The optional 1492 package pictures the shiplap island with dishwasher and wine fridge, stone backsplash, live edge dinette table with residential chairs, backlit ceiling light pad and zero carpet interior.



Columbus offers 2 exterior colors. White, shown above, and Cream.





The 383FB provides a true walk in closet, pictured above in Chestnut Cherry, with residential details creating an upscale feeling, and the most spacious bathroom with double vanity. Columbus features standard 60"x30" showers with built in seat and skylight, solid surface counters with deep sinks and stackable washer and dryer hookups. The front bath, pictured right, shown in Chestnut Cherry and wood look floor, showcases a well-lit bathroom with 3 piece sliding glass shower door, ample storage and French closet doors. Each Columbus is designed with rich hand-rubbed raised panel cabinetry with hidden hinges and five inch drawer handles.

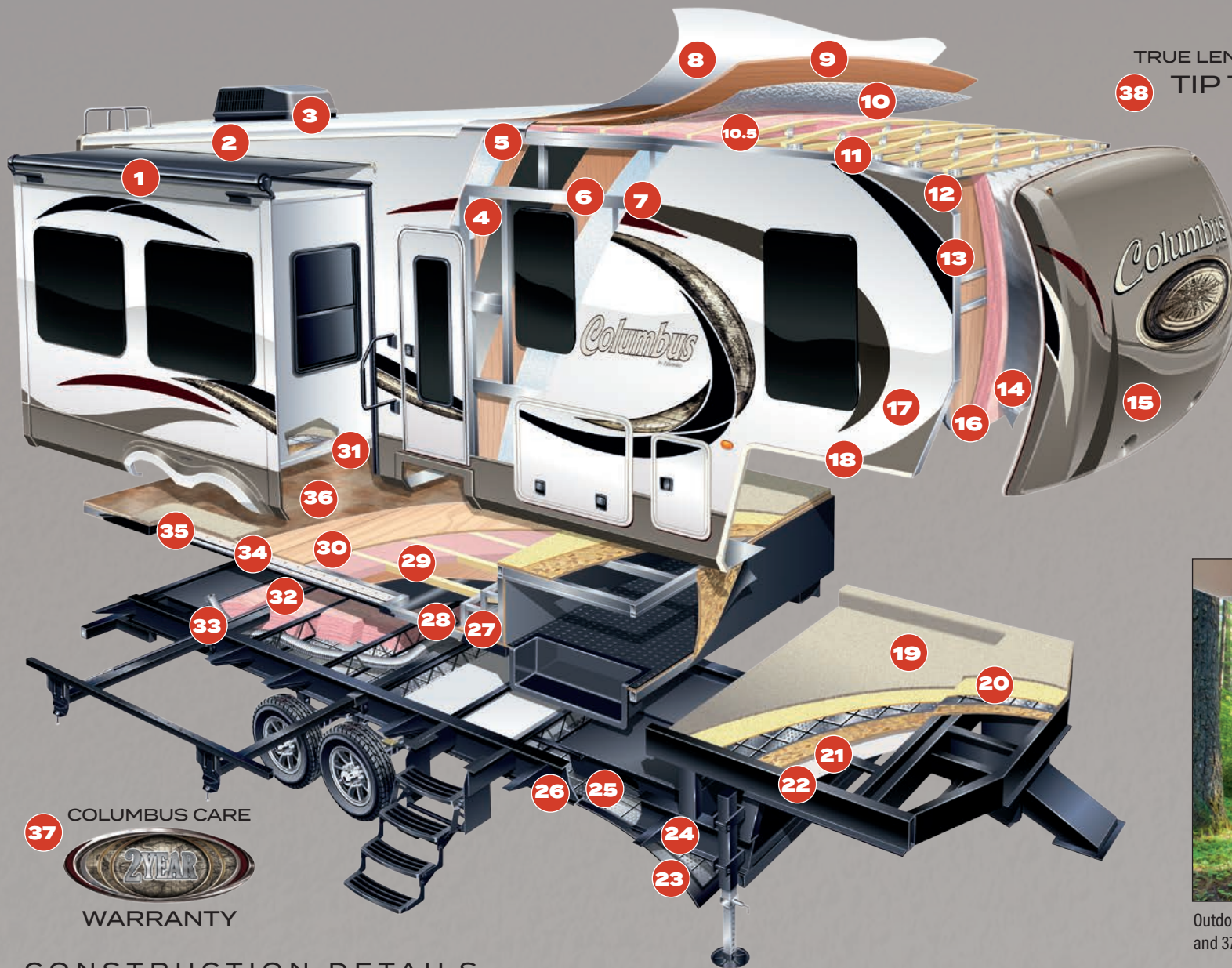


The Columbus bedroom, pictured above in Chestnut Cherry wood, wood look floor and Metropolitan interior, offers a pillowtop mattress, stylish comforter and pillow set. Cherry hardwood presstop dresser and ample storage and closet space completes the distinctive style for any fifth wheel enthusiast. Shown above with optional TV and soundbar.

Pictured below is the 374BH bunkroom in Newport interior, Espresso Cherry wood and tile look floor showcases the shiplap wall with standard TV and sound bar, plenty of sleeping and storage space for the ultimate kids' hangout room.







TRUE LENGTHS FROM  
TIP TO TIP



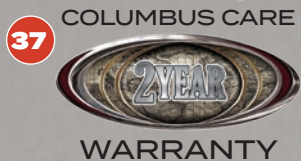
Maxx Air Fan



Optional Metal Wrap Awning

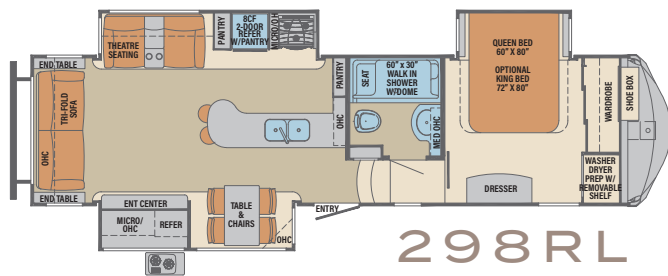


Outdoor Kitchen Available On 298RL, 366RL, 374BH and 378MB

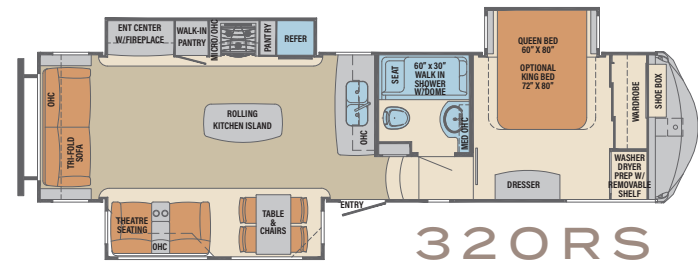


## CONSTRUCTION DETAILS

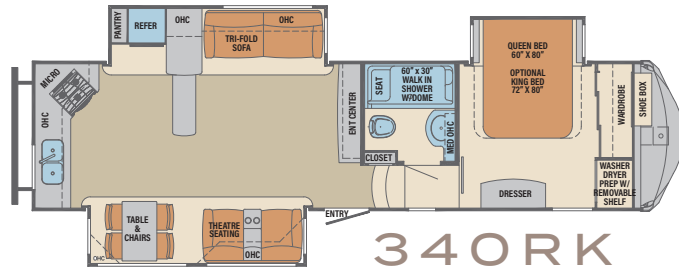
- |                                     |                            |                                       |                                    |                                     |
|-------------------------------------|----------------------------|---------------------------------------|------------------------------------|-------------------------------------|
| 1. Optional Slide Toppers           | 9. 3/8" Decking            | 16. Double Spun Fiberglass Insulation | 24. Astro Foil Insulation          | 32. Fiberglass Insulation           |
| 2. Roof R-40                        | 10. Astro Foil Insulation  | 17. Sidewall R-11                     | 25. Heat Pad On All Tanks          | 33. Separate Heat Runs              |
| 3. Coleman Serenity Air Conditioner | 10.5 Fiberglass Insulation | 18. Fiberglass Exterior               | 26. I-Beam Frame                   | 34. Floor R-38                      |
| 4. Aluminum Wall Frame              | 11. Wood Trusses           | 19. Carpet                            | 27. Step Above Entry Step          | 35. Carpeted Slide Outs             |
| 5. Aluminum Radius                  | 12. Luan                   | 20. Pad                               | 28. Darco Wrap                     | 36. Designer Flooring               |
| 6. Luan                             | 13. Aluminum Wall Frame    | 21. 5/8" OSB                          | 29. Fiberglass                     | 37. Columbus Care Two Year Warranty |
| 7. Foam Insulation                  | 14. Astro Foil Insulation  | 22. Fiberglass Insulation             | 30. 5/8" Tongue and Groove Plywood | 38. True Lengths from Tip to Tip    |
| 8. TPO                              | 15. Painted Front Cap      | 23. Corrugated Plastic Underbelly     | 31. Astro Foil Insulation          |                                     |



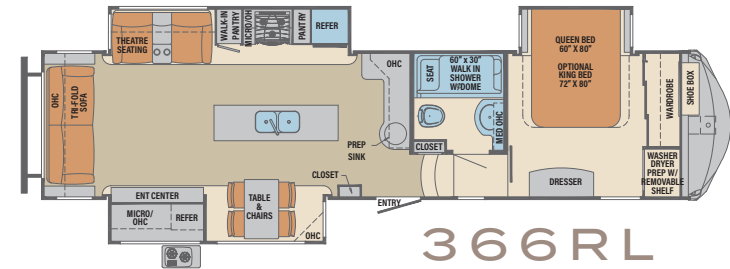
298RL



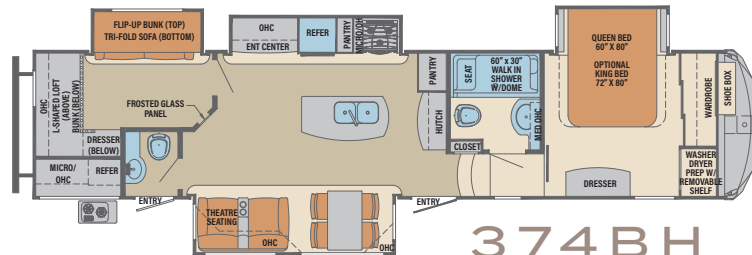
320RS



340RK



366RL



374BH

## CONSTRUCTION

- 101" wide body
- All welded aluminum frame superstructure
- laminated sidewalls and slide boxes
- 5/8 tongue-groove plywood floor
- R40 Residential 5" radius Wood Truss Roof
- 6'6" height slides (living area slides)
- (5) heat ducts out of interior traffic areas
- Snap-in ceiling molding-no staples or tape
- 12V heat pads on all holding tanks
- R38 floor insulation
- R40 roof insulation
- R11 sidewall insulation
- EZ Flex Dexter Axles Easylube Axles w/NEV-R adjust brakes
- 16" wheels w/nitro fill tires

## INTERIOR

- Large frameless tinted windows throughout
- Hidden hinges
- Dovetail constructed reinforced drawers with upgraded hardware
- Upgraded crack/mold/mildew-resistant flooring
- Upgrade true solid surface countertops bath/kitchen
- LED lights
- Residential crown molding throughout unit
- Cherry hardwood slide fascia
- 24 ounce carpet
- Roller night shades
- Cherry hardwood steps
- Central vacuum system
- Large entry closet for jacket / shoe storage

## EXTERIOR

- Metal slam latches on all storage doors
- Magnetic Compartment Door Holds
- 2-tone aluminum wheels
- 2-tone wheel well skirting
- Painted fiberglass front cap
- 2 exterior color choices with champagne metal skirting (cream, white)
- Heated utility convenience center
- Black tank flush
- Outside AM/FM/Bluetooth receiver with USB port and exterior speakers
- Electric rear stabilizer jacks
- Outside shower
- 3-20 lb LP tanks with auto switch (EZ replacement)
- Full view entry door w/window and screen door
- Quick battery disconnect
- Power awning w/LED lighting
- 7000 lb axles (all models)

- Crank down spare tire
- Storage rack in front compartment

## FURNITURE

- Lazy Boy residential theater seating w/storage
- Lazy Boy 80" tri-fold sofa (per model)
- Cherry hardwood entertainment and end table tops
- Residential high end dining chairs with storage

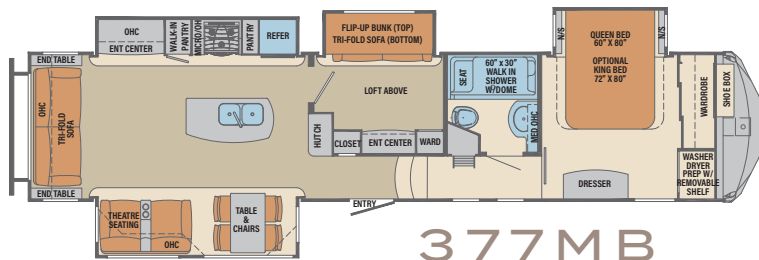
## BEDROOM

- Wall mounted / framed TV cabinet
- Cherry hardwood dresser top
- Pillow top mattress
- (3) French mirrored sliding closet doors
- High end bedspread / pillows

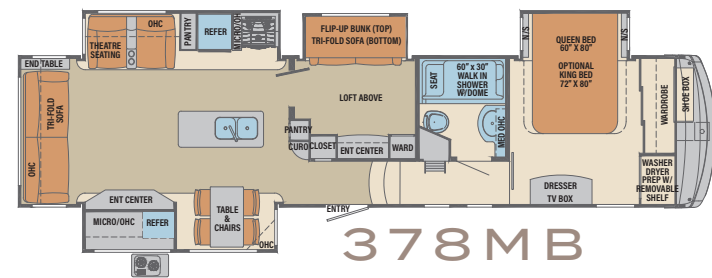
## APPLIANCES

- Upgrade 8 cu ft refrigerator w/adjustable temp settings and raised panel doors
- 50" LED TV w/Sound Bar and Blu-Ray
- 10 gallon water heater w/quick recovery
- Cell phone / ipad charging station
- Washer / dryer prep
- Full system water purifier
- 30" residential convection oven microwave
- 15,000 BTU high output Coleman Serenity A/C
- 35,000 BTU furnace

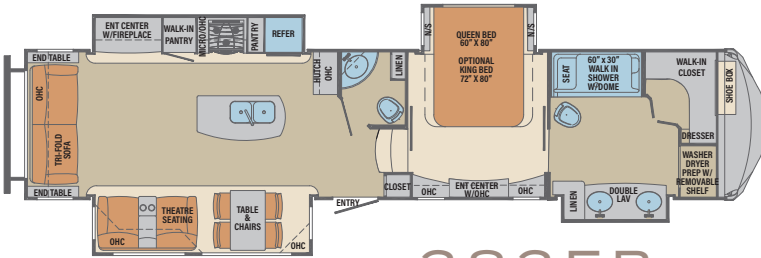




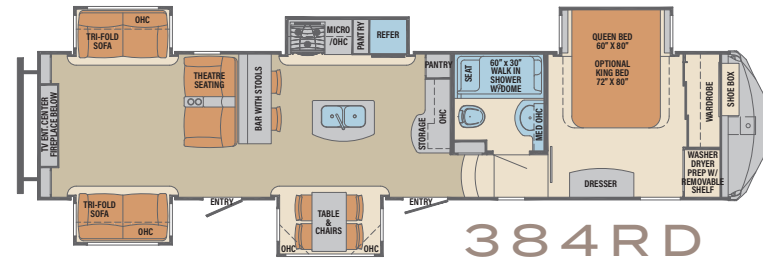
377MB



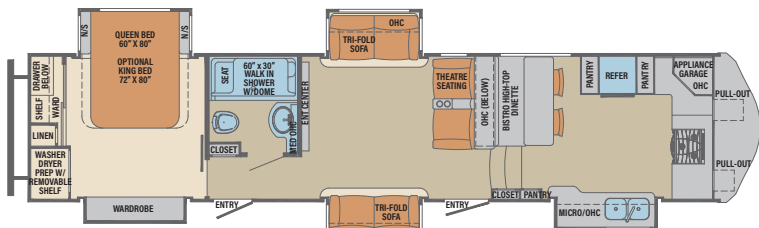
378MB



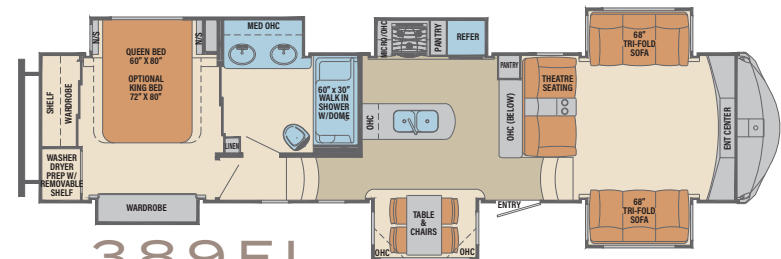
383FB



384RD



386FK



389FL

## KITCHEN

- Recessed solid surface sink covers
- Residential under counter storage
- Recessed solid surface range cover
- Residential glass backsplash
- Additional lighting above sink area
- Large double bowl stainless steel sink
- Single lever faucet w/pull out sprayer
- Movable island (320)
- Trash can with dedicated storage (some models)

## BATHROOM

- 60" x 30" one piece fiberglass shower w/seat & built in shelves for toiletries
- Solid surface counter top
- 3 speed power vent
- Porcelain toilet
- Towel rack built into door

## OPTIONS

- 13.5 Coleman Serenity bedroom A/C –(std 386)
- Trail air rota flex pin box
- Electric fireplace
- 3 slide toppers (298, 320, 340, 366, 383, 386)
- 4 slide toppers (374, 377, 378, 381, 384)
- 5 slide toppers (389)
- 6 POINT HYDRAULIC LEVEL UP
- Stackable washer / dryer
- Dual pane windows
- Keyless entry door lock
- MCD UV reflective day shades
- 32" bedroom LED TV w/Sounds Bar
- 32" bunkroom LED TV (377, 378)
- Bedroom Maxx Fan w/Rain HOOD
- Kitchen Maxx Fan w/Rain HOOD (available most models, Std 386FK)

- 20cu ft residential refrigerator w/Inverter
- 18 cu ft gas electric refrigerator
- King bed
- Serta destination series mattress
- Bike rack (n/a w/rear cap)
- Fiberglass rear cap (n/a w/bike rack)
- Generator prep
- 5/5 generator install (includes gen prep)
- Wood-look floor
- Tile-look floor
- 2 Lazy Boy brand recliners (n/a 298, 366)
- Wireless back up camera
- Metal wrapped awning
- Goodyear H rated tires w/upgraded rims
- 200 Watt Solar Panel (installed) w/2-6V Batteries
- Dyson Air Purification System
- Pass Thru Slide Tray

- **Voyager package includes:** Frameless Windows, Full System Water Purifier, 50" LED TV, Sound Bar, Quick Battery Disconnect, Ext AM/FM/ IPOD/CD w/2 Speakers, Cherry Hardwood Slide Out Fascia, 2 Tone Alum Wheels, 1 Piece Fiberglass Shower, 12 Volt Heat Pads on Tanks, LED Awning Lights, Mor/ryde Step Above Entry Steps, Mor/ryde CRE/3000 Suspension, Syphon 360 Vent Caps, MCD Night Roller Shades, Friction Hinge Full Length Window Main Entry Door, Go Power Solar Prep, MyRV System

- **1492 Package includes:** (366R, 378MB, 383FB, 386FK, 389FL Floorplans ONLY) Zero carpet interior, Serta memory foam mattress, upgrade stone backsplash, Bose premium soundbar, shiplap island, induction cooktop, wine fridge, tankless water heater, power theater seats, MorRyde hitch, bike hitch, MorRyde equalizers, dishwasher, waste management, 1492 slide fascia, Wifi booster, power cord reel, live edge dinette table, residential dinette chairs (2), outside TV/ bracket, drop frame floorplan (n/a 386, 389), two tone painted front cap, backlit ceiling pad, fiberglass rear cap (n/a 389), 1492 graphics pkg, 1492 pillow

## 2018 COLUMBUS 5TH WHEELS BY PALOMINO

	CMF298RL	CMF320RS	CMF340RK	CMF366RL	CMF374BH	CMF377MB	CMF378MB	CMF383FB	CMF384RD	CMF386FK	CMF389FL
HITCH WEIGHT	2309	2422	2138	1913	2884	2378	2251	2632	2490	2619	2751
UVW Unloaded Vehicle Weight	11859	11636	11566	12196	14173	13006	13826	13164	12617	12846	13593
GVWR Gross Vehicle Weight Rating	14859	14636	14566	15196	16884	16006	16251	16164	15617	15846	16593
CCC Cargo Carrying Capacity	3000	3000	3000	3000	2711	3000	2425	3000	3000	3000	3000
OVERALL LENGTH	36' 3"	37' 7"	37' 2"	39' 6"	42' 1"	42' 1"	42' 1"	42' 1"	42' 1"	42' 1"	42' 1"
EXT. HEIGHT (w/o 2nd AC)	12' 4"	12' 4"	12' 4"	12' 4"	12' 4"	12' 4"	12' 4"	12' 4"	12' 4"	12' 4"	12' 4"
EXT. WIDTH	101"	101"	101"	101"	101"	101"	101"	101"	101"	101"	101"
FRESH WATER (gal.)	75gal	75gal	75gal	75gal	75gal	75gal	75gal	75gal	75gal	75gal	75gal
GREY WATER (gal.)	71gal	78gal	78gal	71gal	71gal	71gal	71gal	78gal	78gal	89gal	75gal
BLACK WATER (gal.)	39gal	39gal	39gal	39gal	78gal	39gal	39gal	78gal	78gal	39gal	39gal
AWNING SIZE	16'	16'	16'	18' & 11'	16'	20'	10'6" & 20'	11' & 12'	12' & 17'	19'	20'

### TOWABLES DEFINITIONS

**GVWR (Gross Vehicle Weight Rating)** - is the maximum permissible weight of the unit when fully loaded. It includes all weights, inclusive of all fluids, cargo, optional equipment and accessories. For safety and product performance do NOT exceed the GVWR.

**GAWR (Gross Axle Weight Rating)** - is the maximum permissible weight, including cargo, fluids, optional equipment and accessories that can be safely supported by a combination of all axles.

**UVW (Unloaded Vehicle Weight)** - is the typical weight of the unit as manufactured at the factory. It includes all weight at the unit's axle(s) and tongue or pin and LP Gas. The UVW does not include cargo, fresh potable water, additional optional equipment or dealer installed accessories. \*Estimated Average based on standard build optional equipment.

**CCC (Cargo Carrying Capacity)\*\*** - is the amount of weight available for fresh potable water, cargo, additional optional equipment and accessories. CCC is equal to GVWR minus UVW. Available CCC should accommodate fresh potable water (8.3 lbs per gallon). Before filling the fresh water tank, empty the black and gray tanks to provide for more cargo capacity. \*\*Estimated average based on standard build optional equipment.

Each Forest River RV is weighed at the manufacturing facility prior to shipping. A label identifying the unloaded vehicle weight of the actual unit and the cargo carrying capacity is applied to every Forest River RV prior to leaving our facilities. The load capacity of your unit is designated by weight, not by volume, so you cannot necessarily use all available space when loading your unit.



#### PRE-DELIVERY INSPECTION FACILITY

20,000 square feet of quality assurance. The bare essentials for a premium product. This state-of-the-art facility gives immediate daily feedback to production for the quality assurance in every unit built.

### 24/7 EMERGENCY ROADSIDE ASSISTANCE

For a worry-free ownership experience Forest River includes one year of Coach-Net RV Technical & Roadside Assistance with each RV purchase. Whether new to the RV lifestyle or an experienced RV enthusiast, Forest River owners have 24/7 access to technical, operational and emergency road service coverage throughout the US & Canada. Coach-Net's fast, dependable service is just a phone call away.

**Coach-Net®**

RV Technical & Roadside Assistance

**FREE MEMBERSHIP**  
to Forest River Owners' Group

[www.forestriverfrog.com](http://www.forestriverfrog.com)



#### Learn More

Scan this barcode using a QR Reader on your smart phone to learn more about Forest River.



A Berkshire Hathaway company.

**f** Find us on  
**Facebook**

**PALOMINO**  
COLUMBUS BY PALOMINO  
A Division Of Forest River, Inc.  
105-1/2 C.R. 14 • Middlebury, In 46540  
[www.palominorv.com](http://www.palominorv.com)



#### Owner "Digital Kit" App

Now you can have your Owner's Manual with you wherever you are. Download our FREE App from the App Store or Google Play and you'll have the information right at your fingertips.

All information contained in this brochure is believed to be accurate at the time of publication. However, during the model year, it may be necessary to make revisions and Forest River, Inc., reserves the right to make all such changes without notice, including prices, colors, materials, equipment and specifications as well as the addition of new models and the discontinuance of models shown in this brochure. Therefore, please consult with your Forest River, Inc., dealer and confirm the existence of any materials, design or specifications that are material to your purchase decision. ©2017 Palomino RV.  
A division of Forest River, Inc., Berkshire Hathaway Company. 10/17 Columbus



### CUSTOMER SATISFACTION



[www.ForestRiverBuyLocal.com](http://www.ForestRiverBuyLocal.com)

Colton RV & Marine  
3122 Niagara Falls Blvd  
North Tonawanda, NY 14120  
(716) 694-0188  
[www.ColtonRV.com](http://www.ColtonRV.com)

Colton RV & Marine  
3443 Southwestern Blvd.  
Orchard Park, NY 14127  
(716) 957-3250  
[www.Coltonrv.com](http://www.Coltonrv.com)