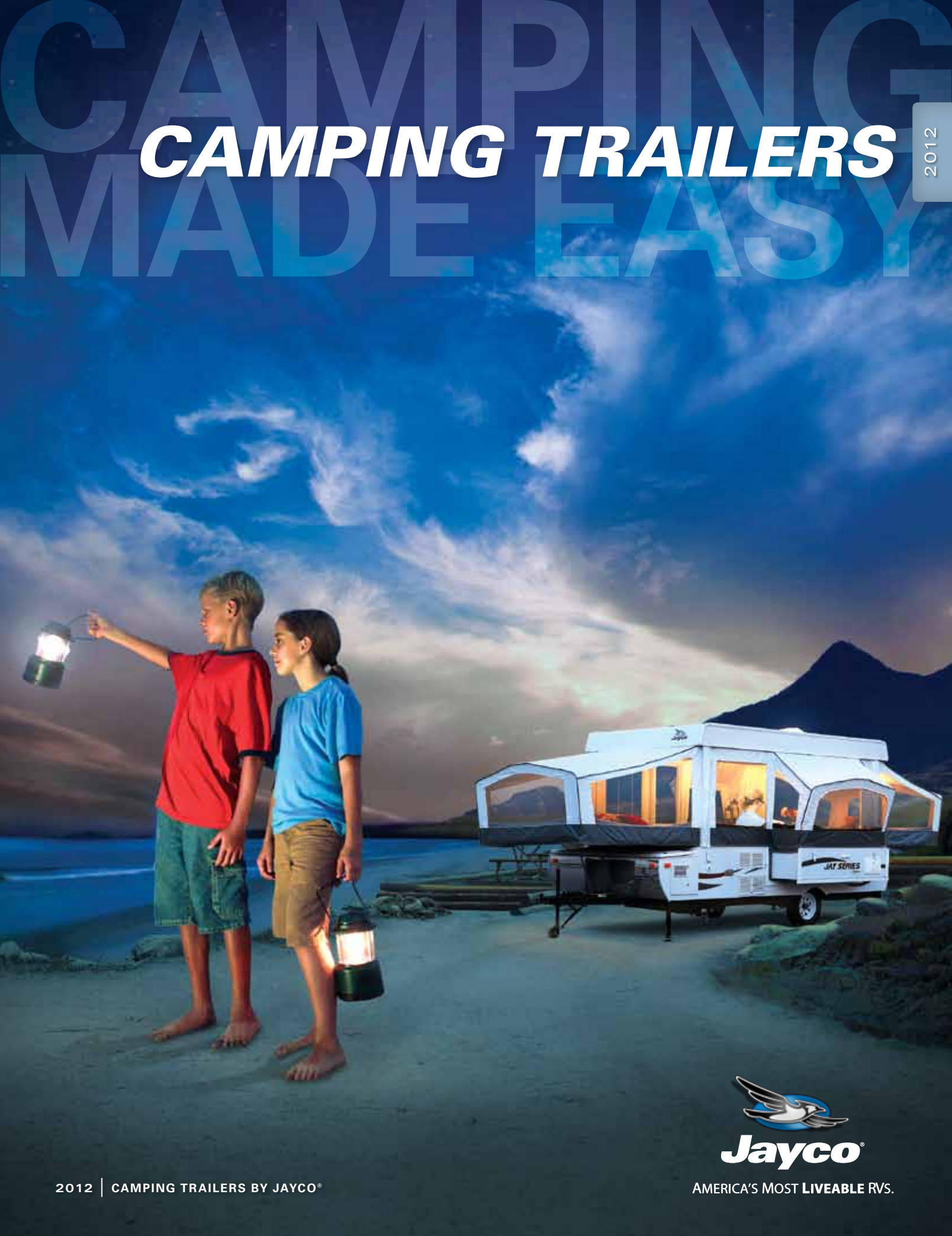


# CAMPING TRAILERS

2012







JAY SERIES SELECT HW | 141J



## AMERICA'S MOST LIVEABLE RVs

Liveability means making your camping experience more comfortable, in an RV you can depend on, at a price you'll feel good about. It's spending quality time together, without spending a fortune. And it's what makes Jayco America's Most Liveable RVs.



# SIMPLE SETUP

Fun is always just a pop away in our 2012 Jayco camping trailers. Our patented lifter system, found on select models, makes setting up fast and easy, so you can practically have fun on the go.

## JAY SERIES SPORT

More affordable than ever, Jay Series Sport combines the amenities you need with the quality you expect from Jayco.

SLEEPING CAPACITY | **UP TO 8**  
EXTERIOR LENGTH | **11' 7"–16' 6"**  
UNLOADED WEIGHT | **1,245–1,540**  
FLOORPLANS | **4**

## JAY SERIES

Our most popular camping trailer, Jay Series boasts a full-featured kitchen, sleeping for up to eight and an optional hard wall bathroom.

SLEEPING CAPACITY | **UP TO 8**  
EXTERIOR LENGTH | **14' 2"– 18' 2"**  
UNLOADED WEIGHT | **1,820–2,530**  
FLOORPLANS | **5**

## JAY SERIES SELECT HW

Packed with more interior features than the competition, Jay Series Select HW is one of the industry's premier camping trailers.

SLEEPING CAPACITY | **UP TO 8**  
EXTERIOR LENGTH | **17' 8"**  
UNLOADED WEIGHT | **2,865**  
FLOORPLANS | **1**

## BAJA

Bring the family—and the toys. Featuring a Bike Port deck, rated for 1,500 pounds, and a host of interior amenities, Baja is built for fun.

SLEEPING CAPACITY | **UP TO 8**  
EXTERIOR LENGTH | **20' 6"– 22' 6"**  
UNLOADED WEIGHT | **2,545–3,015**  
FLOORPLANS | **2**



2012 JAYCO | CAMPING TRAILERS

CAMPING  
MADE EASY





JAY SERIES SPORT | CAMPING TRAILERS

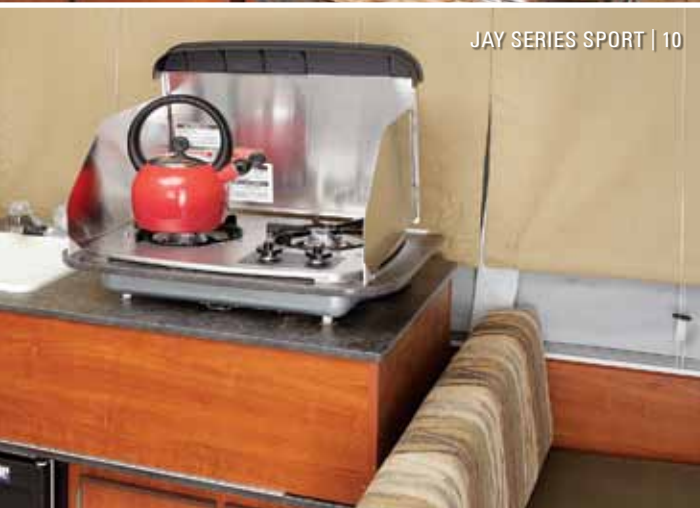


# AFFORDABLE FUN

Jay Series Sport features quality construction at a price you can afford. Sporting a DuraTek water-repellant sectionalized tent, one-piece entrance door, vinyl floor and seamless fiberglass roof, it'll hold up to years of adventure.



JAY SERIES SPORT | 10



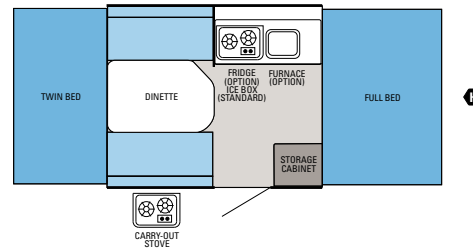
JAY SERIES SPORT | 10

## ROOM TO REST

With spacious floorplans ranging from 11 to 16 feet and sleeping accommodations for up to eight people, there's room for the whole family.

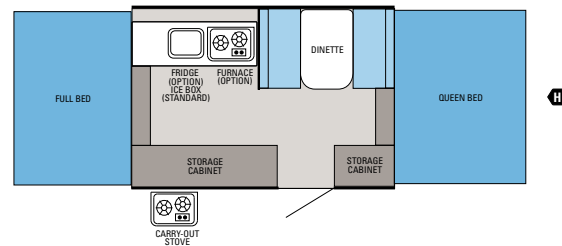
### FLOORPLANS

FRIDGE REFRIGERATOR TRAILER HITCH



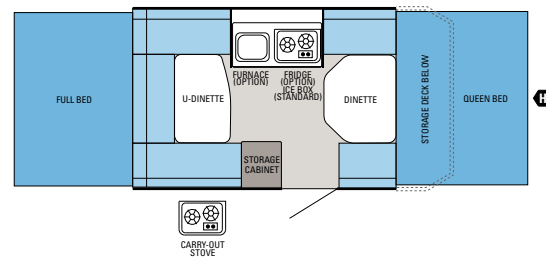
#### JAY SERIES SPORT | 8

Ext. Length: 11' 7" Travel Ht.: 57" Unloaded Wt. (lbs.): 1,245 Sleeps: 5-6



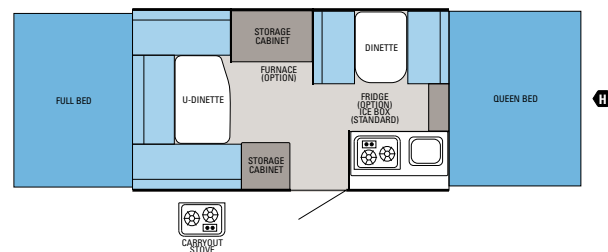
#### JAY SERIES SPORT | 10

Ext. Length: 13' 6" Travel Ht.: 58" Unloaded Wt. (lbs.): 1,410 Sleeps: 5-6



#### JAY SERIES SPORT | 10FD

Ext. Length: 16' 6" Travel Ht.: 58" Unloaded Wt. (lbs.): 1,540 Sleeps: 6-7



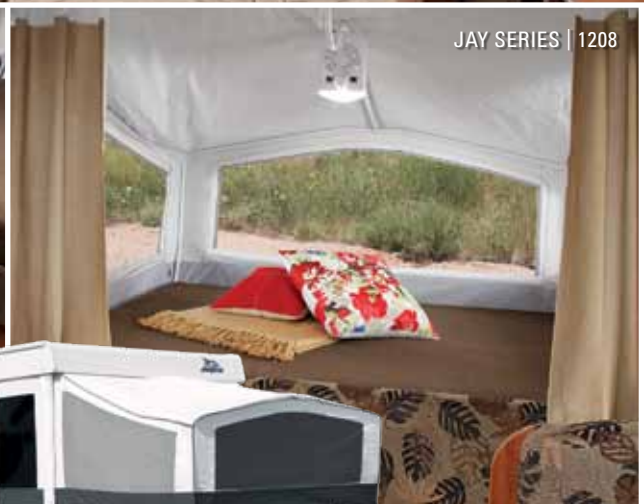
#### JAY SERIES SPORT | 12

Ext. Length: TBD Travel Ht.: TBD Unloaded Wt. (lbs.): TBD Sleeps: 6-8





JAY SERIES | 1208



JAY SERIES | 1208

JAY SERIES | CAMPING TRAILERS



# THE POPULAR CHOICE

Jay Series is our most popular camping trailer, with a choice of five family-friendly floorplans and sleeping for up to eight people. A carry-out dinette table and stainless-steel carry-out stove let you entertain inside or out, while hinged dinette seat bases (select models) provide valuable extra storage.



JAY SERIES | 1208



JAY SERIES | 1208

## CUSTOMIZABLE

Thanks to Jay Series' optional bathroom with folding sidewalls, you can get all the comfort and conveniences of home in one easy setup (select models).

## FLOORPLANS



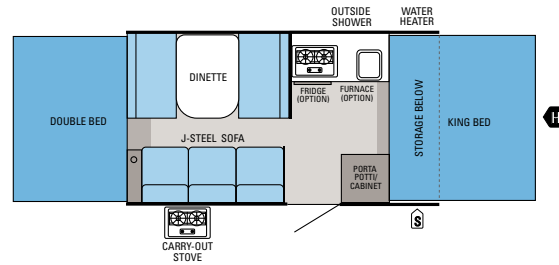
OUTSIDE STORAGE

FRIDGE

REFRIGERATOR

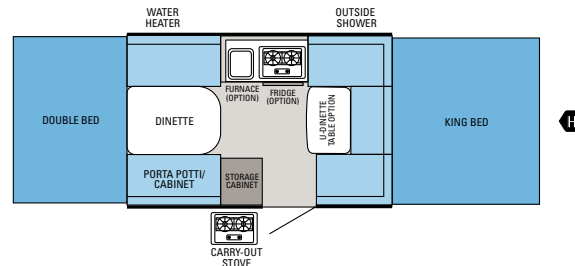


TRAILER HITCH



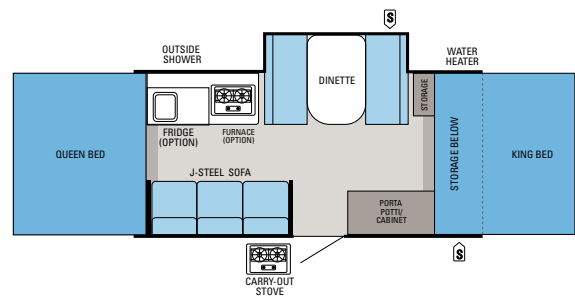
### JAY SERIES | 1006

Ext. Length: 16' 2" Travel Height: 61" Unloaded Weight (lbs.): 2,015 Sleeps: 6-7



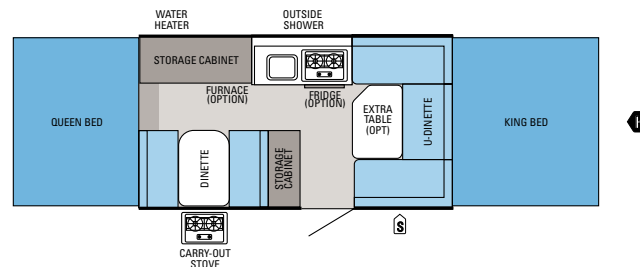
### JAY SERIES | 1007

Ext. Length: 14' 2" Travel Height: 59" Unloaded Weight (lbs.): 1,820 Sleeps: 6-8



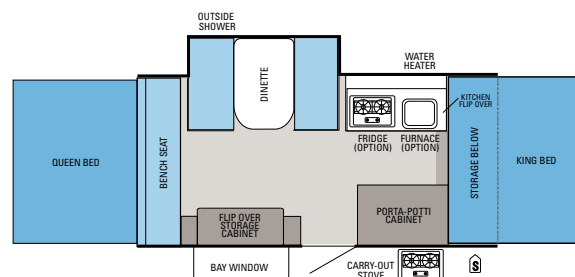
### JAY SERIES | 1206

Ext. Length: 18' 2" Travel Height: 61" Unloaded Weight (lbs.): 2,490 Sleeps: 6-7



### JAY SERIES | 1207

Ext. Length: 16' 2" Travel Height: 61" Unloaded Weight (lbs.): 2,005 Sleeps: 6-7



### JAY SERIES | 1208

Ext. Length: 18' 2" Travel Height: 61" Unloaded Weight (lbs.): 2,530 Sleeps: 5-6





JAY SERIES SELECT HW | CAMPING TRAILERS



# PREMIUM POP-UP

Our top-of-the-line camping trailer, Jay Series Select HW, offers more high-end interior features than anything in its class, including a three-burner stove, microwave oven, Concord Cherry cabinetry, brushed nickel hardware, real-wood drawers, king-sized bunk ends and a 16,000-BTU furnace.





JAY SERIES SELECT HW | 141J

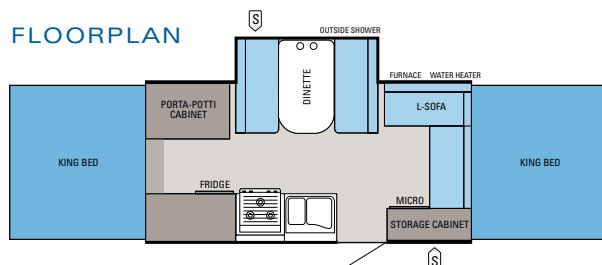


JAY SERIES SELECT HW | 141J



JAY SERIES SELECT HW | 141J

## FLOORPLAN



## JAY SERIES SELECT HW | 141J

Ext. Length: 17' 8" Travel Ht.: 65" Unloaded Wt. (lbs.): 2,865 Sleeps: 6-8



BATH/SHOWER  
OPTION W/FOLDING  
HARD WALLS



OUTSIDE STORAGE



TRAILER HITCH

MICRO MICROWAVE  
FRIDGE REFRIGERATOR





BAJA | CAMPING TRAILERS



# OFF-ROAD READY

In addition to many of the same popular amenities and features as the Jay Series and Jay Series Select HW camping trailers, the Baja also boasts a hard-core Bike Port deck that holds up to 1,500 pounds, so you'll never have to leave your favorite toys behind.





BAJA | 10G



BAJA | 10G



BAJA | 10G

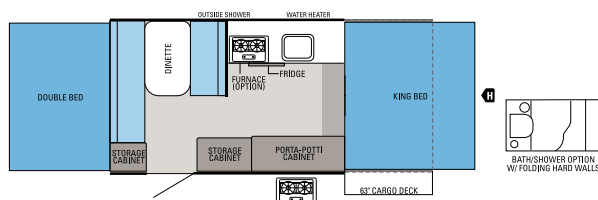


BAJA | 10G

## FLOORPLANS

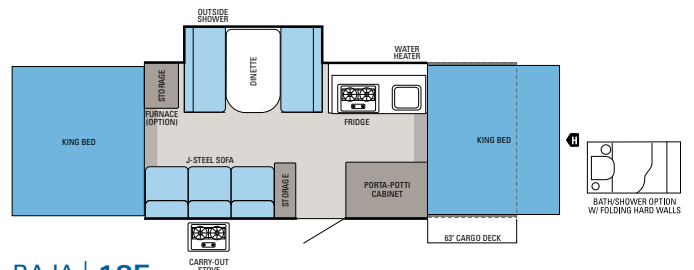
FRIDGE REFRIGERATOR

 TRAILER HITCH



### BAJA | 10G

Ext. Length: 20' 6" Travel Ht.: 69" Unloaded Wt. (lbs.): 2,545 Sleeps: 5-6



### BAJA | 12E

Ext. Length: 22' 6" Travel Ht.: 69" Unloaded Wt. (lbs.): 3,015 Sleeps: 6-8



# NOBODY OFFERS A BETTER WARRANTY THAN WE DO

## YOU WANT YOUR RV TO LAST A LONG TIME.

That's why we offer our exclusive 2-year Co-Pilot Warranty, the best and most comprehensive warranty program in the industry. Every Jayco RV undergoes rigorous quality control testing before it leaves the factory, so you can be confident your new Jayco will continue to provide the ultimate in liveability and reliability for years to come.

For a copy of our 2-year limited warranty with full terms and conditions, ask your local Jayco dealer.

## ROADSIDE ASSISTANCE

Travel worry-free with Jayco's Customer First Roadside Assistance program, yours at no cost during your first year of ownership. This program is offered through National Motor Club, the largest RV emergency road service in the country, and gives you immediate access to dependable roadside assistance and support services with a simple phone call.



TO LEARN MORE ABOUT  
OUR QUALITY CONTROL  
TESTING, SCAN HERE WITH  
YOUR SMARTPHONE.



## TRUE VALUE OF OWNERSHIP



### MORE STANDARD FEATURES

We pack more standard features into our RVs than anyone else. Even better, they're features we know you'll want, designed to make your RV more home-like, comfortable and convenient. Because at Jayco, it's always been about liveability.



### BRAND-NAME COMPONENTS

We like living up to the name we've built for ourselves. That's why we only use dependable components in our RVs, made by companies that value their reputation as much as we do ours.



### LESS MAINTENANCE

Our top-quality materials and production techniques let you spend more time enjoying your new RV and less time maintaining it.



### BETTER AVERAGE RESALE VALUE

In the last three years, Jayco owners have been banking on their investments. According to the NADA, Jayco's average resale value was 4.81% higher than the competition, giving Jayco the top resale value in the RV industry.



With Jayco, you get more amenities, more liveable, home-like features and superior construction for less maintenance and greater resale value. **Simply put, you won't find another RV packed with more TRUE VALUE.**



#### VALUABLE AMENITIES

Comfort shouldn't come at a premium, so that's why we include standard features, like our **A** | 3-way refrigerator, which runs on propane, electric or battery (select models), **B** | a full kitchen with hot and cold running water (n/a Sport) and **C** | versatile SoftShades (n/a Sport) that tie back or lower down.

#### MODERN AMENITIES

Setting up camp just got easier thanks to the **A** | standard power lifter system with remote key fob, manual override and load sensing electronics (n/a Sport). And thanks to **B** | reversible dinette cushions with EZ-clean vinyl backs and **C** | a 16,000-BTU furnace (standard on Select HW, optional on Jay Series and Baja), we've taken comfort to a new level.



#### PUTTING THE FOCUS ON CAMPING

We want your camping trailer to be effortless to maintain, so we pack it with easy-to-use features, like **A** | convenient, E-Z Lube axles that keep your camper in towing shape, **B** | permanently attached bunk end support poles (n/a Sport) that make setup a breeze and **C** | an easy-to-store, one-piece entry door that allows access when the roof is lowered.



#### HOLDING ITS VALUE

Years down the road, our camping trailers will still be fit for the RVing family. Complete with **A** | seamless vinyl flooring, **B** | an outside shower (n/a Sport) and **C** | loads of convenient, storage inside and out, our campers are packed with amenities that make it appealing now—and later.

# JAYCO CONSTRUCTION

At Jayco, we've built a reputation for superior construction and craftsmanship. We always use top-quality materials and innovative manufacturing techniques—down to the smallest detail. The result? Unmatched resale value and peace of mind in an RV that's built to handle whatever the road throws at it, while outlasting everything but your memories.



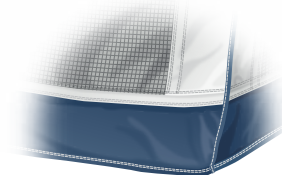
## OLD WORLD CRAFTSMANSHIP

Jayco's dedicated production team includes Amish craftsmen who build with well-honed woodworking techniques passed down for generations.



## LIFTER SYSTEM

Fully enclosed to protect against rust and road debris, our patented lifter system uses strong and flexible push-rods to guide the roof up as you crank (n/a Sport), while our tubular lift posts have no edges to chafe or soil the tent. Nylon bushings in the lifter posts reduce friction and extend the life of the system.



## DURABLE TENT DESIGN

Our DuraTek water-repellent tent material, double-stitched in our own factory and backed by a 5-year warranty, is built to resist mildew, mold, scratches and cracks. Permanently attached to 1,050-lb. rated bunk ends, our tent is built to weather the elements.



All Jayco products are green certified. Our camping trailers received a gold rating through use of sustainable materials, environmentally friendly production methods and reduction of waste.

# LIFETIME WARRANTY COVERAGE

Thanks to our commitment to quality construction, we're able to back our camping trailers with lifetime warranty coverage on our lifter system, roof, floor, frame and bed platform.\*

\* Motor on electric lifter system is excluded. For a copy of the limited warranties with full terms and conditions, ask your local dealer.



## STANDARDS AND OPTIONS

## STANDARD INTERIOR EQUIPMENT

	SPORT JAY SERIES	SELECT HW BAJA
2 cu. ft. 3-way gas/electric refrigerator (110V/12V/propane)		•
3 cu. ft. 3-way gas/electric refrigerator (110V/12V/propane)		•
3-burner stove/oven with recessed stove ring /cover		•
6-gal. water heater	•	•
17-gal. fresh water system with 12V demand pump	•	•
30-gal. fresh water system with 12V demand pump		•
35-lb. ice box	•	•
16,000-BTU furnace with auto ignition		•
Acrylic sink and faucet	•	•
Appliances, pre-plumbed for propane	•	•
Auxiliary 12V jack for bunk ends	•	•
Ball bearing drawer guides, 50-lb. capacity with full-drawer extension	•	•
Bunk-end fan lights (2)		•
Booth dinette	•	•
Cable TV hookup with RG6 connection		•
Carry-out dinette table	•	•
Concord Cherry cabinetry	•	•
Coordinated furniture, designed and made by Jayco	•	•
Door pulls with roller catch	•	•
Drawers made of real wood	•	•
Granite-look countertop	•	•
Heavy-duty entrance door securement latches	•	•
Hinged plywood dinette seat bases		•
J-Steel sofa (1006, 1206 and 12E)		•
Microwave oven		•
Mildew-resistant aluminum ceiling	•	•
Non-sliding, 4" deep cushions for dinette with reversible EZ-clean vinyl backs		•
Oversized oven		•
Porta-potti storage cabinet (1207)	•	•
Prep for A/C accommodating all roof-mounted A/Cs	•	•
Privacy curtains for end-bunks	•	•
Raised-panel cabinet doors	•	•
Sliding pantry in front wall (1006, 1206 and 1208)		•
SoftShade window shades and valances	•	•
Stainless-steel carry-out stove with wind deflectors	•	•
Tinted vinyl windows with fine-mesh screening	•	•
Wall-to-wall vinyl flooring	•	•
Water heater bypass system	•	•
Window drapes and 4" ceiling valances	•	•

## STANDARD EXTERIOR EQUIPMENT

	SPORT JAY SERIES	SELECT HW BAJA
12" C-range tires	•	•
12" D-range tires (1007)		•
12V electrical system with 25-amp 110V converter	•	•
12V electrical system with 30-amp 110V converter	•	•
12V electrical system with 35-amp 110V converter		•
13" C-range tires (1006 and 1207)		•
13" D-range tires (1206 and 1208)		•
14" x 14" roof vent	•	•
14" C-range tires		•
15" off-road Dunlop Mud Rover radial tires		•
20-lb. propane gas bottle	•	•
30-amp power cord	•	•
120V G.F.C.I. protected exterior receptacle	•	•
1,050-lb. rating on beds	•	•
Bumper-welded steel construction	•	•
Corrosion-resistant frame	•	•
Crank-down stabilizer jacks with sand pads	•	•
Diamond plate on front and rear walls	•	•
Domed, seamless fiberglass roof	•	•
Double 20-lb. propane gas bottles with vinyl cover		•
DuraTek water-repellent sectionalized tent	•	•
Electric brakes		•
Entrance door access with roof lowered	•	•
E-Z Lube axles		•
Floor constructed of Structurwood and wrapped with Poly Flex underbelly material	•	•
Front storage deck with expanded steel surface and aluminum deck railing		•
Heavy-duty A-frame construction	•	•
Jayco's original, fully enclosed lifter system (same design used since 1968)		•
Lamilux 4000 fiberglass laminated sidewalls		•
Leaf spring suspension system	•	•
Leveling tongue jack	•	•
Lifter post covers integrated into tent	•	•
One-piece construction entrance door with self-storing screen door	•	•
Outside shower	•	•
Permanently attached bed support poles		•
Power roof lift with remote key fob	•	•
Prep wiring for battery	•	•
Ramps/deck railing (dual use) with quick-connect deck attachment system		•

Rear bumper made of 4" tubular steel

Roof prepped for bike carrier	•	•	•
Scratch-resistant, embossed aluminum exterior finish	•	•	•
Spare tire and tire carrier with vinyl tire cover	•	•	•
TorFlex independent torsion axle suspension	•	•	•

## OPTIONS

2-cu.ft. 3-way gas/electric refrigerator (110V/12V/propane)	•	•	•
2nd table with pedestal leg (1007 and 1207)		•	•
16,000-BTU furnace with auto ignition	•	•	•
Bath/shower with hard walls and shower curtain (1206 and 1208)		•	•
Deluxe screen room		•	•
Electric brakes (standard on 1206 and 1208)	•	•	•
Front storage box		•	•
Heated bed mats (2)	•	•	•
Hydraulic surge brakes		•	•
Multi-Media stereo with outside speakers		•	•
Outside grill		•	•
Powered roof vent		•	•
Prep for A/C, includes wiring, roof supports, 120V outlet and wire sleeve cover	•	•	•
Roof-mount bike rack with double cross bars		•	•
Self-storing awning made by Jayco	•	•	•
Spare tire with carrier and cover	•	•	•

## CUSTOMER VALUE PACKAGE

2-cu.ft. 3-way gas/electric refrigerator (110V/12V/propane)	•	•	•
10-gal. fresh water system with 12V demand pump	•	•	•
14" x 14" roof vent	•	•	•
Battery gauge		•	•
Bunk-end fan lights (2)		•	•
Crank-down rear stabilizer jacks with sand pads (2)	•	•	•
E-Z Lube axles	•	•	•
Multi-Media stereo with outside speakers		•	•
Non-sliding, 4" deep cushions for dinette with reversible EZ-Clean vinyl backs	•	•	•
Polished aluminum rims		•	•
Self-storing awning made by Jayco	•	•	•
Solar prep		•	•
Stainless-steel carry-out stove with wind deflectors	•	•	•
Water purification system		•	•

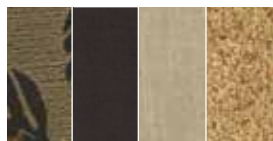
## SPECIFICATIONS

	FLOORPLAN	EXT. LENGTH	CAMPSITE LENGTH	EXT. WIDTH	TRAVEL HEIGHT	UNLOADED VEHICLE WEIGHT (LBS.)	DRY HITCH WEIGHT (LBS.)	GROSS VEHICLE WEIGHT RATING (LBS.)	CARGO CARRYING CAPACITY (LBS.)	FRESH WATER CAPACITY (GAL.) (WITH WATER HEATER)	GRAY WASTEWATER CAPACITY (GAL.)	TOILET/BLACK WASTEWATER CAPACITY (GAL.)
JAY SERIES SPORT	8	11' 7"	16' 2"	85"	57"	1,245	185	1,995	750	10	—	—
	10	13' 6"	19' 6"	85"	58"	1,410	160	2,250	840	10	—	—
	10FD	16' 6"	20' 11"	85"	58"	1,540	185	2,350	810	10	—	—
	12	TBD	TBD	85"	TBD	TBD	TBD	TBD	TBD	10	—	—
JAY SERIES	1006	16' 2"	20' 10"	85"	61"	2,015	215	2,950	935	23	—	—
	1007	14' 2"	20' 10"	85"	59"	1,820	195	2,550	730	23	—	—
	1206	18' 2"	23' 4"	85"	61"	2,490	285	3,450	960	23	11*	5*
	1207	16' 2"	23' 4"	85"	61"	2,005	185	2,950	945	23	—	—
	1208	18' 2"	23' 4"	85"	61"	2,530	295	3,490	960	23	11*	5*
SELECT HW	141J	17' 8"	25' 8"	85"	65"	2,865	390	3,850	985	23	7.5*	5*
BAJA	10G	20' 6"	24' 2"	85"	69"	2,545	275	4,550	2,005	36.5	11*	5*
	12E	22' 6"	27' 6"	85"	69"	3,015	405	4,850	1,835	36.5	11*	5*

\*with optional bath/shower

## INTERIOR DÉCOR

## SPORT &amp; JAY SERIES



## JAY SERIES SELECT HW



## BAJA



## WOOD



FOR A COMPLETE LIST OF  
STANDARDS AND OPTIONS, SCAN  
HERE WITH YOUR SMARTPHONE  
OR VISIT JAYCO.COM.

# A TRADITION OF LIVEABILITY

**THE JAYCO STORY BEGAN IN 1968** when Jayco founder Lloyd Bontrager created an innovative, easy-to-use lifter system that led to a better fold-down camper. Loaded with more comforts and conveniences, Lloyd believed his camper would bring people closer together because it was more liveable. A devoted family man, Lloyd's passion extended to his business as well. In fact, our company's success stems from his insistence on treating everyone at Jayco as family — from our factory to our front office, our salespeople to our suppliers, and our customers to our community.

**BLENDING OLD WORLD AMISH CRAFTSMANSHIP WITH INNOVATIVE TECHNOLOGY**, Jayco is the nation's largest family-owned and operated RV manufacturer today. And while our product line has grown considerably over the years, every unit we build is still guided by Lloyd's vision and a humble desire to help make it easier for families to explore together and relax together. It's what separates us from other RV manufacturers. And it's what continues to make Jayco America's Most Liveable RVs.



AMERICA'S MOST **LIVEABLE** RVs.

Colton RV  
North Tonawanda, NY 14120  
(716) 694-0188  
(800) 628-4889  
[www.ColtonRV.com](http://www.ColtonRV.com)

Colton RV  
Orchard Park, NY 14127  
(716) 957-3250  
(800) 628-4889  
[www.ColtonRV.com](http://www.ColtonRV.com)



Jayco proudly sponsors Tread Lightly!, a nonprofit organization whose mission is to empower generations to enjoy the outdoors responsibly through education and restoration.

**Unloaded Vehicle Weight (UVW):** Sometimes referred to as "Dry Weight," UVW means the typical weight of this trailer as built at the factory. The UVW, as used in product literature and other promotional materials, does not include cargo, fresh water, propane, options or dealer-installed accessories.

**Gross Vehicle Weight Rating (GVWR):** GVWR means the maximum permissible weight of the trailer, including the UVW plus passengers, personal items, all cargo, fluids, options, and dealer-installed accessories. The GVWR is equal to or greater than the sum of the UVW and the CCC.



From RV insurance to extended warranties, JayPlus has it covered. Ask your Jayco dealer about our exclusive JayPlus program today.

**Cargo Carrying Capacity (CCC):** CCC means the maximum weight of all passengers, personal items, food, fresh water, propane, tools, other cargo and dealer-installed accessories that can be carried by the trailer. CCC is equal to or less than GVWR minus UVW. The addition of options will decrease the CCC.

**Hitch Weight (HW):** The hitch weight, as used in product literature and other promotional materials, does not include cargo, fresh water, propane gas, options or dealer-installed accessories. The addition of these types of items will either add to or subtract from the stated hitch weight.



As a Jayco owner, you can be part of the Jayco Jafari International Travel Club. Ask your dealer about the Jafari "flight" in your area, write Jayco or visit our website.

It is important for your safety and enjoyment that your tow vehicle be adequately sized and equipped to tow and handle the GVWR of the RV you select. Review weights and rating of your tow vehicle and consult a competent advisor for questions or advice. Whether you are new to RVing or a veteran, get a feel for the performance of your tow vehicle before heading out on the roadways. When you tow an RV, you must drive differently than when you drive a single vehicle. Practice hooking up, driving, backing up and braking in a safe environment or seek out professional instruction. Jayco affixes a weight label to each RV which lists weight information for that vehicle. See specifications chart inside.

**Jayco, Inc., P.O. Box 460, Middlebury, IN 46540, [www.jayco.com](http://www.jayco.com)**

See dealer for further information and prices. All information in this brochure is the latest available at the time of publication approval. Jayco reserves the right to make changes and to discontinue models without notice or obligation. Photos in this brochure may show optional equipment and props for photography purposes. RVs built for sale in Canada may differ to conform to Canadian codes. ©2011 Jayco, Inc. 12-FDCT-PL 0711-100K Printed in U.S.A.