

WILDWOOD



WE DON'T WAIT FOR THE FUTURE. **WE BUILD IT!**



27RE
CLAY INTERIOR
7,545 LBS
DRY WEIGHT



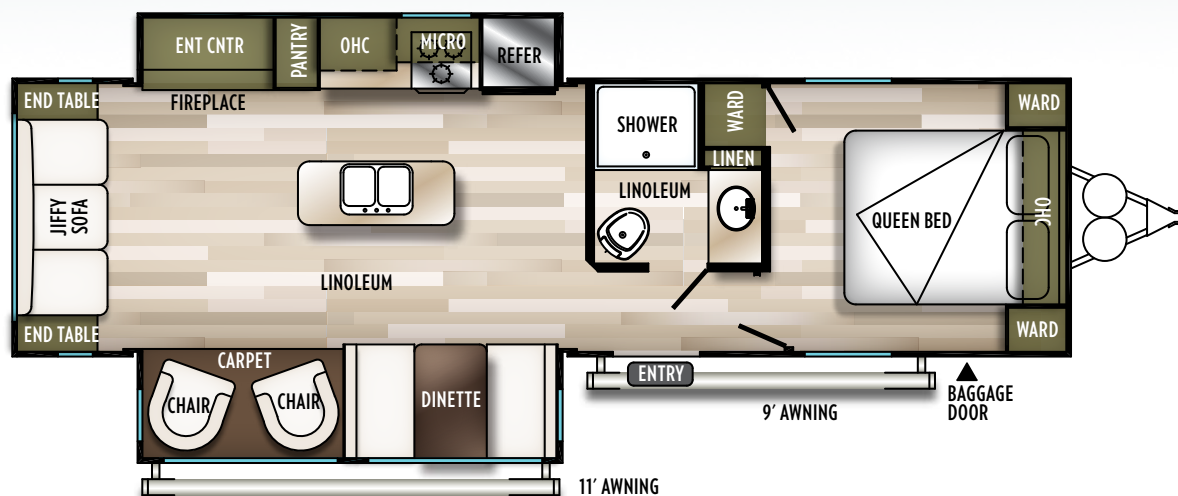
STOW & GO
SUPER STORAGE
WILDWOOD



WASTED SPACE
COMPETITION



PERFECT
ORGANIZATION
WILDWOOD





9" DENVER MATTRESS
SWEET SLEEP



**BACK-BREAKING
SLEEP**

COMPETITION

WILDWOOD



WOW!
LOOK AT THE SIZE OF THAT
REFRIGERATOR
10.7 CU. FT.
WILDWOOD



**SMALL
REFRIGERATOR
6 CU. FT.**

COMPETITION



**2
ORGANIZE
YOUR GEAR**

COMPETITION

WHEN YOU
COMPARE
THE DIFFERENCE IS CLEAR.



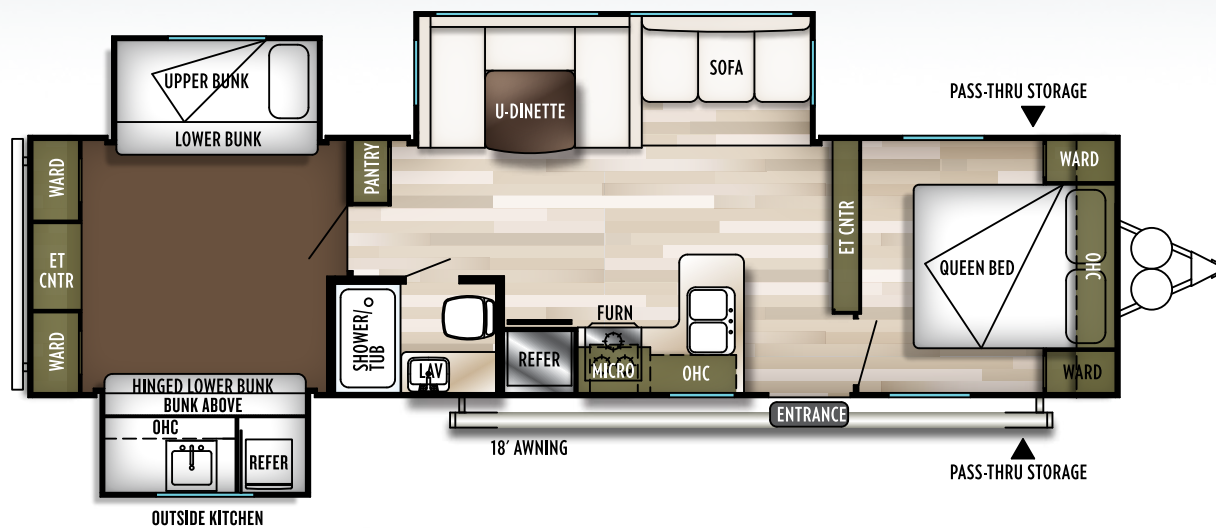
31KQBTS
CLAY INTERIOR
8,535 LBS
DRY WEIGHT



**WHISPER-QUIET
COMFORT A/C**
WILDWOOD



**OBNOXIOUS
NOISY A/C**
COMPETITION



COZY & WARM
WILDWOOD



WHO KNOWS?

COMPETITION

ALWAYS ON
USB PORT

WILDWOOD

PANORAMIC
BEAUTY

WILDWOOD

WHO KNOWS?

COMPETITION

WHO KNOWS?

COMPETITION

WHEN YOU
COMPARE
THE DIFFERENCE IS CLEAR.

DESIGN.
FUNCTION.
PROTECTION.



WHEN YOU
COMPARE
THE DIFFERENCE IS CLEAR.

24/7 EMERGENCY
ROADSIDE
ASSISTANCE
FREE 1-YEAR COVERAGE
WITH PURCHASE
WILDWOOD

WHO KNOWS?

COMPETITION

SHAKY &
UNSTABLE

COMPETITION



**AWESOME
TUFF-COAT SIDING**
.030 THICKNESS

WILDWOOD



WHO KNOWS?

COMPETITION



**ROCK-SOLID
STABILIZING JACKS**
EACH JACK HOLDS UP TO 5,000 LBS.

WILDWOOD



SOLID STEP

WILDWOOD



**DIM, DEPRESSING
LIGHTS**

COMPETITION



**LIGHT UP THE
CAMPSITE**

WILDWOOD



**UNSTABLE
& UNEASY**

WILDWOOD CONSTRUCTION

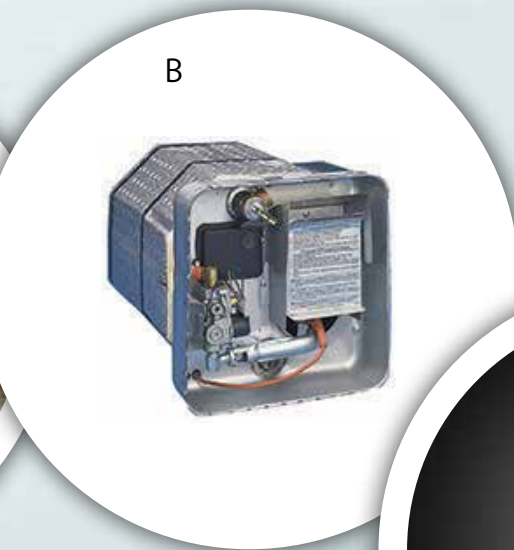
FORM FOLLOWS FUNCTION.

At Wildwood your satisfaction is serious business and it shows.
Our commitment to your satisfaction includes:

A. Wildwood 5/8" Tongue and groove plywood (top) vs. OSB (below)

B. 6 gallon Gas/Electric DSI water heater with Quick Recovery

C. New Centralized Command Center



- 1 2" x 3" floor joists average 12" on center
- 2 5/8" 5-ply tongue in groove plywood floor decking
- 3 2" wall studs 16" or less on center
- 4 30" fiberglass radius entry door vs. the common 26" wide doors
- 5 .030 Aluminum siding
- 6 5" bowed truss roof rafters
- 7 One piece seamless roof (12 yr. manufacturer defect warranty)
- 8 R-7 fiberglass insulation throughout
- 9 Extra large full pass-thru storage w/ 20" x 30" Door (per floorplan)
- 10 Smooth rolled skirting
- 11 In floor ducted heat
- 12 Diamond plate rockguard
- 13 3/8" roof decking (full walk-on roof)
- 14 LP bottle cover w/ easy access
- 15 Coleman® 13.5K ducted roof, high output AC w/ quick cool
- 16 Stain resistant carpet
- 17 One piece linoleum flooring
- 18 Safety glass windows
- 19 Polystyrene foam insulated A/C duct work with close-able vents
- 20 "Darco" protective anti-puncture underbelly wrap







Ceiling LED Lights

16 x 24 Residential Style Cabinets
with Glass Inserts and Base
Shelves (Where applicable)

Designer Spring Faucet
(Limited Program Option)

LG® Solid Surface Countertops
(Limited Program Option)

Stainless Steel Appliance
Package Shown with *12v
10.7 cu. ft. Refrigerator

Shaw® Linoleum
Scratch, Tear, and Cold,
Crack Resistant Flooring

Standard Thomas Payne® Recliners
(Per floor plan)

80"
CEILING
HEIGHT

Safety Glass
Windows
Throughout

Modern Cloth
Roller Shades

Stow & Go storage

INTERIOR FEATURES

SOME FEATURES SHOWN HAVE LIMITED AVAILABILITY.

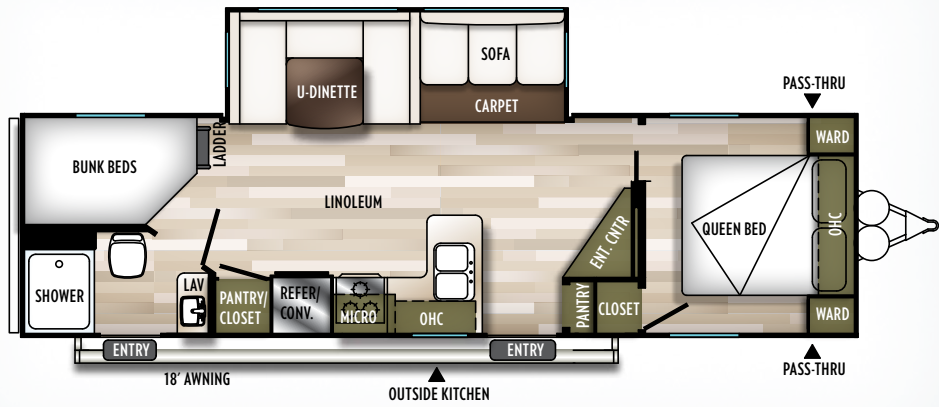
WILDWOOD

POPULAR FEATURES

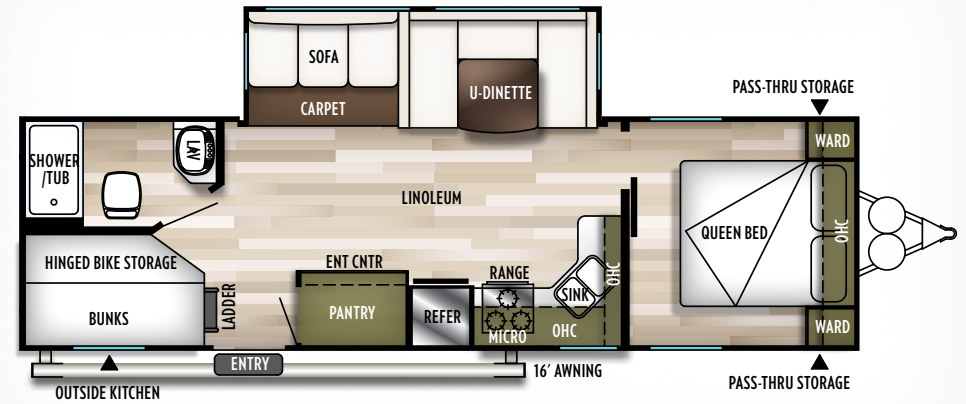
MORE REASONS WHY
PEOPLE CHOOSE WILDWOOD

1. Full Extension Ball Bearing Drawer Guides
2. High Rise Spring Faucet
3. Extra Large Pass-Through Storage
4. NEW Deluxe Entertainment Center with Standard 30" Fireplace, Shoe Nook (Most Models)
(Shown with customer supplied TV)
5. Large 10.7 cu. ft. Everchill refrigerator with magnetic door holder.
6. LG® Solid Surface Countertops (Limited Time Options*)
7. Bluetooth Soundbar Stereo with Remote and HDMI Passthrough hook-up for DVD player
8. Over Slide LED Accent Lighting (Limited Time Options*)

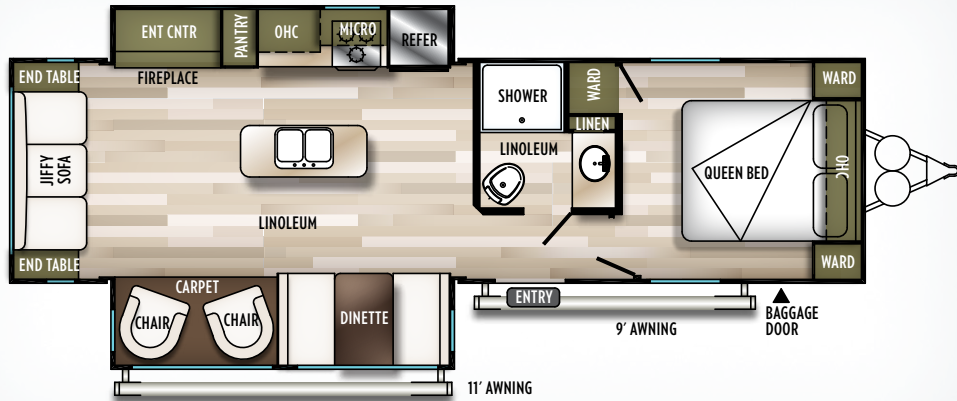
* See your dealer for more details about our Limited Time Options



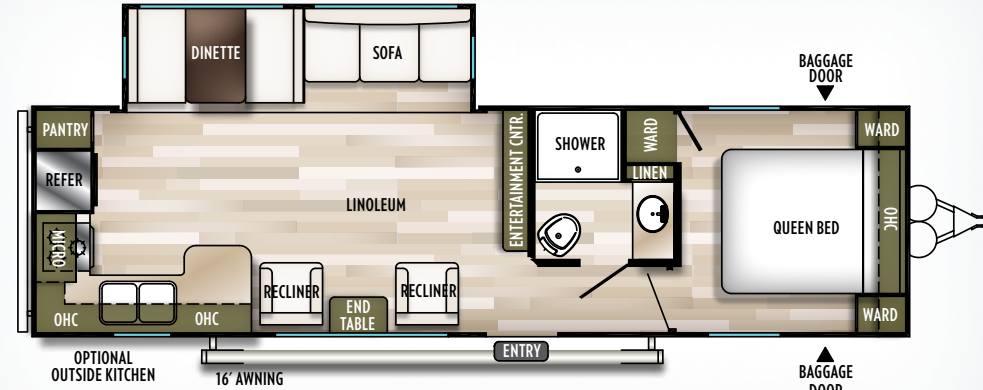
26DBUD | DRY WEIGHT 6,885



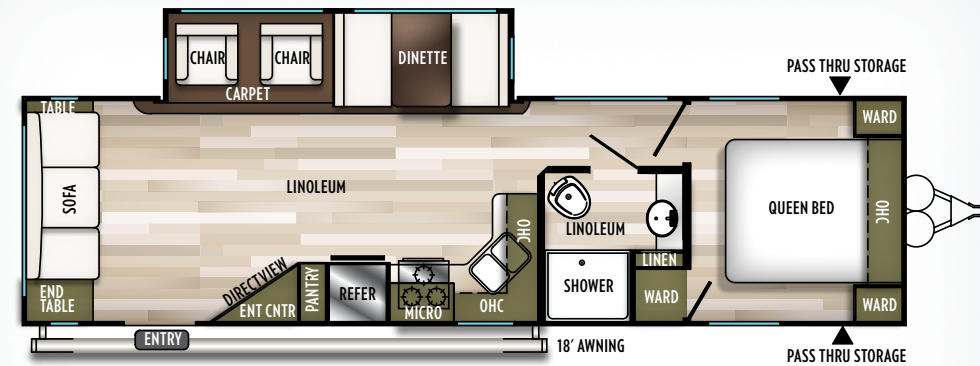
27DBK | DRY WEIGHT 6,380



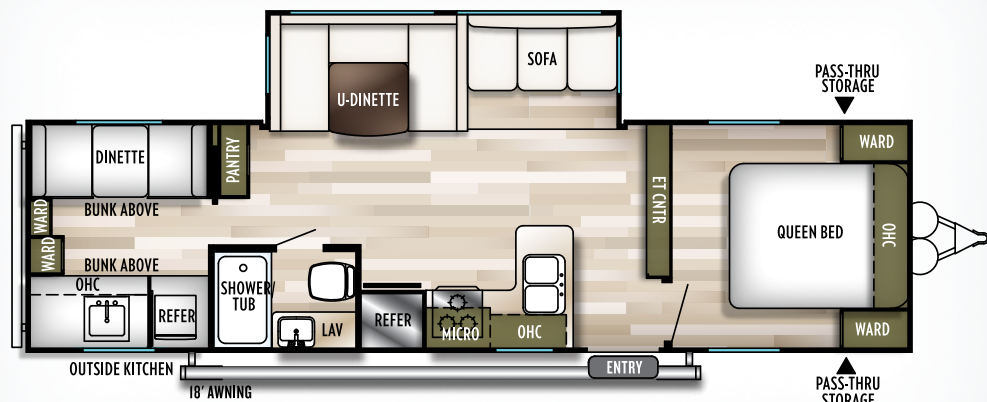
27RE | DRY WEIGHT 7,545



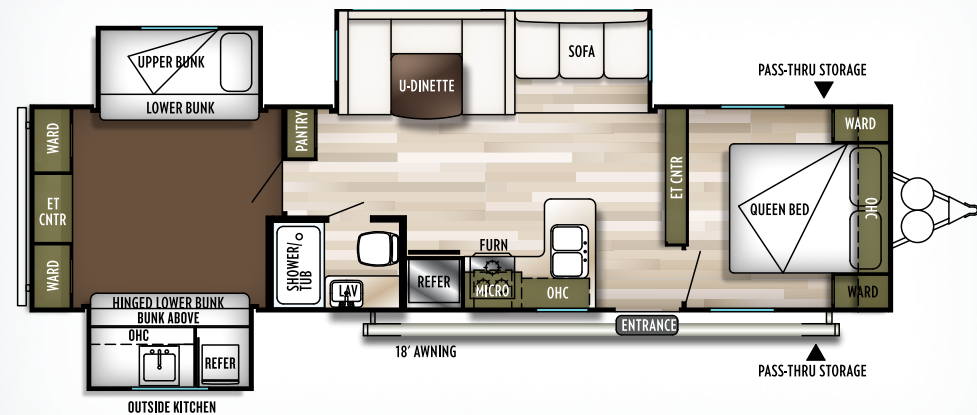
27RKS | DRY WEIGHT 6,750



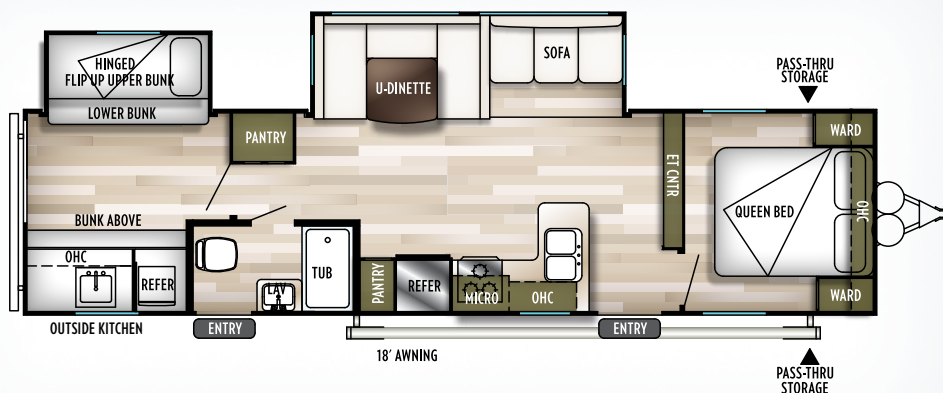
28RLSS | DRY WEIGHT 6,351



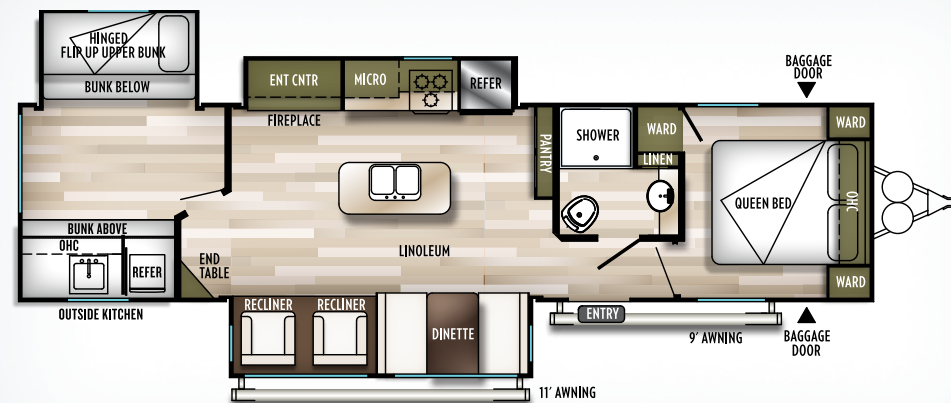
30KQBSS | DRY WEIGHT 6,780



31KQBTS | DRY WEIGHT 8,535



32BHDS | DRY WEIGHT 7,955

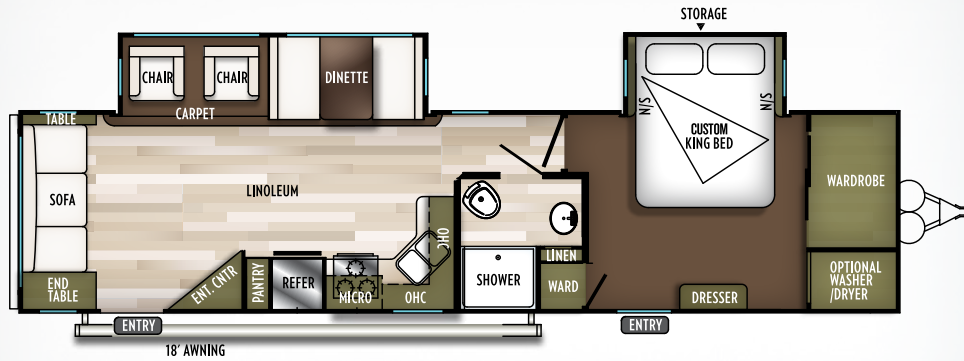


32BHT | DRY WEIGHT 9,050

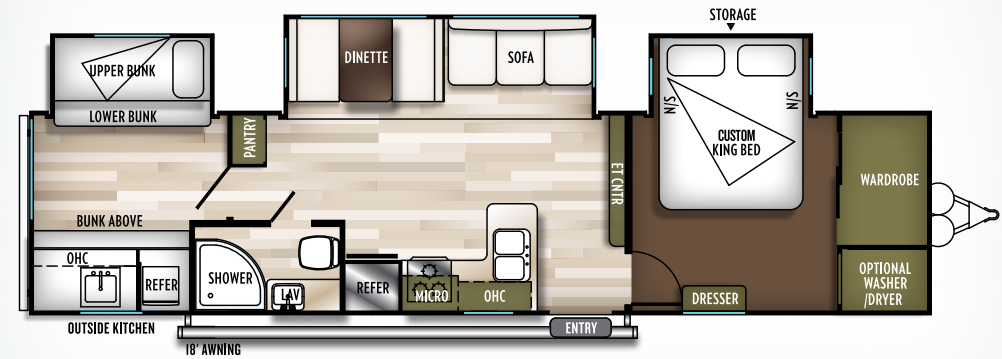
WILDWOOD FLOORPLAN KEY

OHC
OVERHEAD CABINET
WARD
WARDROBE
MICRO
MICROWAVE
LAV
BATHROOM SINK

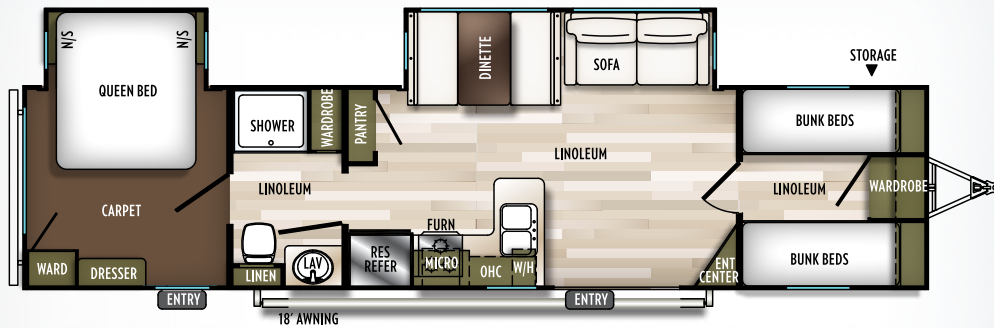
	26DBUD	27DBK	27RE	27RKS	28RLSS	30KQBSS	31KQBTS	32BHDS	32BHT
HITCH WEIGHT (LBS.)	795	701	965	950	762	860	905	859	1080
AXLE WEIGHT (LBS.)	6090	5679	6677	5800	5589	5920	7630	7096	7970
UNLOADED VEHICLE WEIGHT (LBS.)	6885	6380	7545	6750	6351	6780	8535	7955	9050
CARGO CARRYING CAPACITY (LBS.)	872	1283	2245	1162	1373	2777	1292	1826	2192
EXTERIOR LENGTH (LBS.)	33' 2"	32"	33' 6"	33' 7"	34' 1"	33'	36' 6"	35' 8"	37' 6"
EXTERIOR HEIGHT (LBS.)	11' 3"	11' 4"		11' 2"	11' 5"	11' 2"	11' 3"	11' 2"	11' 7"
FRESH WATER (GAL.)	40	39	40	40	40	39	39	39	40
BLACK WATER (GAL.)	30	30	27	27	30	27	27	30	38
GREY WATER (GAL.)	60	60	27	54	30	57	54	57	57
TIRE SIZE (IN.)	15	15	15	15	15	15	15	15	15



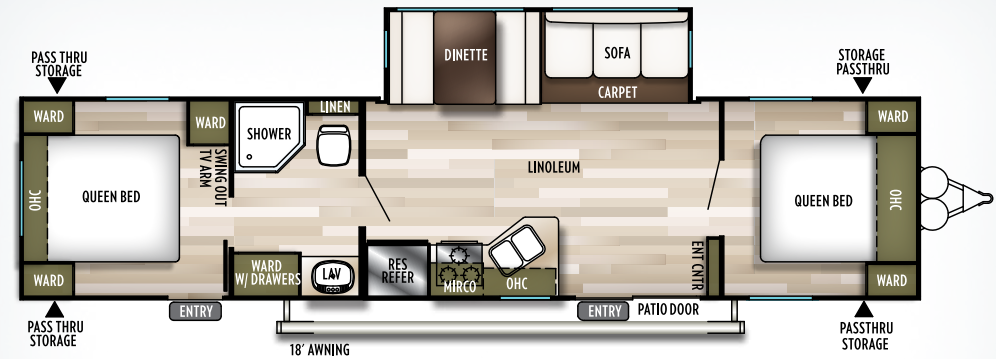
32RLDS | DRY WEIGHT 8,490



33TS | DRY WEIGHT 9,238



36BHDS | DRY WEIGHT 8,325



37BHSS2Q | DRY WEIGHT 7,600

WILDWOOD FLOORPLAN KEY

OHC
OVERHEAD CABINET
WARD
WARDROBE
MICRO
MICROWAVE
LAV
BATHROOM SINK

	32RLDS	33TS	36BHBS	37BHSS2Q
HITCH WEIGHT (LBS.)	980	1088	1015	970
AXLE WEIGHT (LBS.)	7510	8150	7310	6630
UNLOADED VEHICLE WEIGHT (LBS.)	8490	9238	8325	7600
CARGO CARRYING CAPACITY (LBS.)	1412	1852	3316	2271
EXTERIOR LENGTH (LBS.)	38'	38' 9"	38' 8"	39'
EXTERIOR HEIGHT (LBS.)	11' 6"	11' 4"	11' 5"	11' 2"
FRESH WATER (GAL.)	40	40	40	39
BLACK WATER (GAL.)	27	30	38	27
GREY WATER (GAL.)	27	54	27	30
TIRE SIZE (IN.)	15	15	15	15

STANDARDS & OPTIONS

CONSTRUCTION & EXTERIOR

- 5/8" tongue & groove plywood floor decking
- Full walk on one-piece seamless SuperFlex® roof w/ 12 year manufacturer defect warranty
- Extra large full pass through storage (Per floorplan)
- Cold crack and mildew resistant vinyl patio awning
- Safety glass windows
- Metal framed 30" smooth radius corner fiberglass main entry door
- Powder coated I-beam frame
- Cambered chassis
- 16-gal. per hour Gas/Electric quick recovery DSI water heater
- Water heater by-pass
- Nitrogen filled tires
- 2" wall construction, 16" (or less) on center
- R-7 fiberglass insulation throughout
- 13 ply cross micro-laminated beam header above slide out
- Triple seal slide out system
- Flush floor electric slide out systems
- Swing arm entry assist handle
- Two LED marine grade exterior speakers
- Aerodynamic front radius profile
- .040 Smooth aluminum front cap
- One-piece slip-resistant Shaw® vinyl flooring

KITCHEN

- New Mortise and Tenon Shaker Style Cabinet Doors
- 10.7 cu. ft. 12v Ever Chill® refrigerator (Limited Program Option)

- High rise spring faucet (Limited Program Option)
- Residential Undermount Kitchen Sink
- Stainless steel finish microwave w/ carousel
- 3-Burner, high output range with oven (2 yr. warranty) Stainless steel / Black finish on oven door
- Stainless steel finish range hood w/ 12-volt exhaust fan and light
- 27" tall overhead cabinet (Kit)
- Wood drawers w/ furniture-grade plywood sides
- Full extension ball bearing drawer guides
- Shelving in overhead cabinets in kitchen
- Central switch location for command center
- Brushed stainless finish hardware
- Abundant cabinet storage
- Roll-up stainless steel sink cover

LIVING ROOM

- 80" interior height (Limited Program Option)
- Ducted 13,500 BTU roof air conditioner w/ quick cool
- Stow & Go storage under jiffy sofa
- Booth dinette (Most models) and U-shaped dinette (Some models)
- Panoramic windows with cross ventilation
- Digital antenna with booster
- Bluetooth FM stereo and New soundbar.
- 25K BTU Suburban® forced air DSI furnace w/ digital thermostat (2 yr. warranty)
- In-floor ducted heat
- Cable TV hookup living room and bedroom

- Wall switch controls for ceiling lights at living room and bathroom

BEDROOM

- NEW - Overhead cabinets in bedroom
- NEW USB ports
- NEW Denver mattress with pillow top in master bed (Limited program option)
- Strut lifted storage area under bed (Master bedroom) 80 lb. struts
- Bedside mirrored wardrobes w/ shelf above bed
- Bedside 110-volt power outlets (2)
- Increased space at the foot of the bed (Most models)
- Solid bedroom privacy doors (Most models)
- Shoe nook at the foot of the master bed with 4 cu. ft. of NEW stow and go storage.
- Double USB ports by beds

BATHROOM

- 12-volt power bath roof exhaust vent
- Foot flush toilet
- Standard molded surround showers
- Retractable shower door on all 30 x 36 showers (per floorplan)

SECURITY & SAFETY

- LP leak detector
- Smoke detector
- Carbon monoxide detector
- Fire extinguisher
- Welded heavy duty safety chains
- Electric brakes (All wheels)
- GFI receptacles
- ANSI 119.2 certified

- Meets all national highway administration specifications
- RVIA approved product

OPTIONS

- Skylight over tub
- 30-lb LP bottles w/ cover and auto change-over
- 15,000 BTU ducted air w/ quick cool
- Radial tires (Mandatory option)
- Spare tire and carrier

LIMITED TIME OPTIONS

(Contact your local dealer for more information)

- 10.7 cu. ft. 12v Ever Chill® refrigerator
- Denver 9" pillowtop mattress
- SolidStep triple step (Main door only)
- Exterior white LED light strip under awning
- LG Solid Surface Kitchen Countertops
- Modern roller shades w/ autoStop (Living, Bed)
- Residential designer spring faucet
- Green pkg: Furrion® solar prep & LED mushroom lights
- Power awning w/ adjustable legs
- J.T. Strong Arm jacks and power tongue jack
- Furrion® backup camera prep
- Power tongue jack
- Fireplace

Contact your dealer for a complete list of options.

**24/7 EMERGENCY
ROADSIDE ASSISTANCE
WITH VEHICLE PURCHASE***

TOWING
JUMP-STARTS
TIRE CHANGES
FLUID DELIVERY
LOCKOUT
SERVICE

WINCH-OUT
MOBILE MECHANIC
TECHNICAL
SUPPORT
DEALER LOCATOR
SERVICES



*VALID FOR 1 YEAR FROM DATE OF PURCHASE

FREE MEMBERSHIP
to Forest River Owners' Group

www.forestriverfrog.com



Learn More
Scan this barcode using
a QR Reader on your
smart phone to learn
more about Forest River.



A Berkshire Hathaway company.

FOREST RIVER, INC. 55470 C.R. 1 ELKHART, IN 46515 | (574) 533-5934
WWW.FORESTRIVERINC.COM/WILDWOOD | WWW.FORESTRIVERACCESSORIES.COM



CENTRE DE VÉRIFICATION AVANT LIVRAISON

Voici 20.000 pieds carrés qui vous offrent une assurance de qualité. La base essentielle d'un produit de haute qualité. Cette installation de pointe fait ses commentaires de façon quotidienne et immédiate à la production afin de s'assurer de la qualité de construction de chaque unité.

Specification Definitions

GVWR (Gross Vehicle Weight Rating) - is the maximum permissible weight of the unit when fully loaded. It includes all weights, inclusive of all fluids, cargo, optional equipment and accessories. For safety and product performance do NOT exceed the GVWR.

GAWR (Gross Axle Weight Rating) - is the maximum permissible weight, including cargo, fluids, optional equipment and accessories that can be safely supported by a combination of all axles.

UVW (Unloaded Vehicle Weight)* - is the typical weight of the unit as manufactured at the factory. It includes all weight at the unit's axle(s) and tongue or pin and LP Gas. The UVW does not include cargo, fresh potable water, additional optional equipment or dealer installed accessories.

*Estimated average based on standard build optional equipment.

CCC (Cargo Carrying Capacity)** - is the amount of weight available for fresh potable water, cargo, additional optional equipment and accessories. CCC is equal to GVWR minus UVW. Available CCC should accommodate fresh potable water (8.3 lbs per gallon). Before filling the fresh water tank, empty the black and gray tanks to provide for more cargo capacity.

** Estimated average based on standard build optional equipment

Each Forest River RV is weighed at the manufacturing facility prior to shipping. A label identifying the unloaded vehicle weight of the actual unit and the cargo carrying capacity is applied to every Forest River RV prior to leaving our facilities.

The load capacity of your unit is designated by weight, not by volume, so you cannot necessarily use all available space when loading your unit.

All information contained in this brochure is believed to be accurate at the time of publication. However, during the model year, it may be necessary to make revisions and Forest River, Inc., reserves the right to make all such changes without notice, including prices, colors, materials, equipment and specifications as well as the addition of new models and the discontinuance of models shown in this brochure. Therefore, please consult with your Forest River dealer and confirm the existence of any materials, design or specifications that are material to your purchase decision. Litho. U.S.A. FOR 1422 P/W: 2017.11.01

MEET YOUR WILDWOOD DEALER 2019

Budget RV Outlet of Buffalo
4817 Lake Ave.
Blasdell, NY 14219
716-685-3546
www.budgetrvoutlet.com

WILDWOOD
PRODUCT FAMILY



X-LITE



WILDWOOD



HERITAGE GLEN



DLX | LODGE | GRAND LODGE