

WE'RE BEHIND YOU ALL THE WAY



PRE-DELIVERY INSPECTION FACILITY
20,000 square feet of quality assurance. The bare essentials for a premium product. This state-of-the-art facility gives immediate feedback to production for quality assurance in every unit built.

**24/7 EMERGENCY
ROADSIDE ASSISTANCE
WITH VEHICLE PURCHASE***

TOWING JUMP-STARTS TIRE CHANGES FLUID DELIVERY LOCKOUT SERVICE	WINCH-OUT MOBILE MECHANIC TECHNICAL SUPPORT DEALER LOCATOR SERVICES
---	--

**SAFERIDERV
MOTOR CLUB**

*VALID FOR 1 YEAR FROM DATE OF PURCHASE

FREE MEMBERSHIP
to Forest River Owners' Group

www.forestriverfrog.com



**FOREST RIVER
OWNER DIGITAL
KIT APP**

Now you can have your Owner's Manual with you where ever you are. Download our FREE app from the App Store or Google Play and you'll have the information at your fingertips.

CUSTOMER SATISFACTION

FOREST RIVER
encourages you to
BUY LOCAL

PREFERENTIAL SERVICE PRODUCT INFORMATION

www.ForestRiverBuyLocal.com

Actual towing capacity is dependent on your particular loading and towing circumstances, which includes GVWR, GAWR and GCWR, as well as adequate trailer brakes. Please refer to the Owner's Manual of your vehicle for further information. All information contained in this brochure is believed to be accurate at the time of publication. However, during the model year, it may be necessary to make revisions and Forest River, Inc., reserves the right to make all such changes without notice, including prices, colors, materials, equipment and specifications as well as the addition of new models and the discontinuance of models shown in this brochure. Therefore, please consult with your Forest River dealer and confirm the existence of any materials, design or specifications that are material to your purchase decision. ©2020 XLR, a Division of Forest River, Inc., a Berkshire Hathaway company. All Rights Reserved. 12/20



Learn More
Scan this barcode using a QR Reader on your smart phone to learn more about Forest River.

FOREST RIVER

A Berkshire Hathaway company.

XLR
TOY HAULERS

ACTION CAMPING™

2421 Century Drive / Goshen, IN 46528
Phone: 574-642-0438
E-mail: XLRinfo@forestriverinc.com



Visit our website at: **forestriverinc.com/rvs/brand/XLR/toy-haulers** for everything Nitro has to offer.

YOUR XLR ACTION CAMPING™ DEALER:

Colton RV & Marine
3122 Niagara Falls Blvd
North Tonawanda, NY 14120
(716) 694-0188
www.ColtonRV.com

Colton RV & Marine
3443 Southwestern Blvd.
Orchard Park, NY 14127
(716) 957-3250
www.Coltonrv.com

NITRO

20XLR21
TOY HAULERS



ACTION CAMPING™



NITRO

AFFORDABLE LUXURY

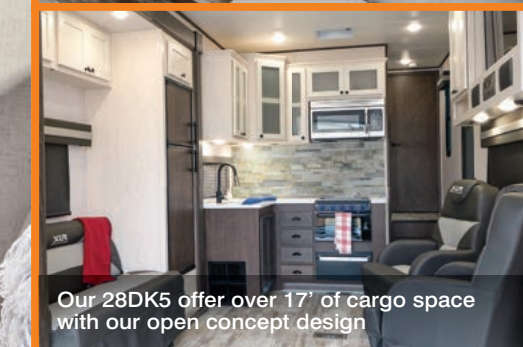
The modern rustic design features barn-style wood passage doors, authentic slate backsplash, solid surface countertops and two-tone cabinetry, providing a true residential feel. Upgraded appliances complement the styling, while the plank vinyl flooring with zero carpet and central vacuum system help keep Mother Nature outside. Blackout roller shades offer additional privacy throughout.



405 shown with standard 50" TV, custom audio system, 5K BTU fireplace, and black privacy roller shades.



Spacious First-Class recliner seating with easy clean soft touch vinyl.



Our 28DK5 offer over 17' of cargo space with our open concept design



Premium 48" shower with seat and shelves.



Every Nitro master suite offers a spacious wardrobe closet with drawers, dual night-stands with chargers, and a "star-gazer" automotive windshield with roller shade.

Model 321 show in Aspen decor. Optional 12 cu/ft refrigerator shown.

TALE OF THE TAPE – SIZE MATTERS

Nitro has redefined what a mid-priced Fifth Wheel Toy Hauler should look and feel like. Our 2021 exteriors feature the Star-gazer front windshield, giving you expanded views of every sunrise and sunset. Interiors provide maximum space.

NITRO



EXTERIOR OPTIONAL FULL BODY PAINT COLORS:



NPS

INVERTER GENERATORS

YAMAHA

ENGINE ONBOARD

- Pure sine wave inverter technology for cleaner, safer, more stable power
- Up to 25% more fuel efficient
- 3-year/2,000-hour Warranty
- Forest River 3-year Exclusive
- Wireless remote start with key FOB
- Integrated pull start
- Advanced all-new cooling system with no overheating

TOP FEATURES



Central Vac with Dual Sweep Pans



Lippert® Weatherproof Ramp Door



Tire Pressure Monitoring System Standard



Maverick Ramp Patio Package



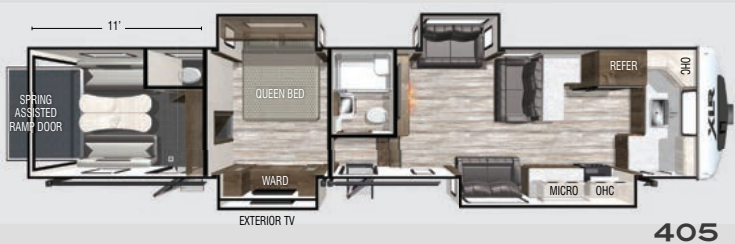
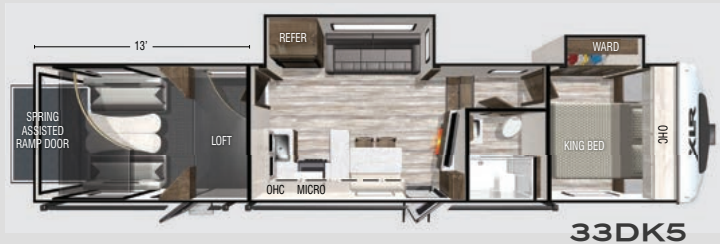
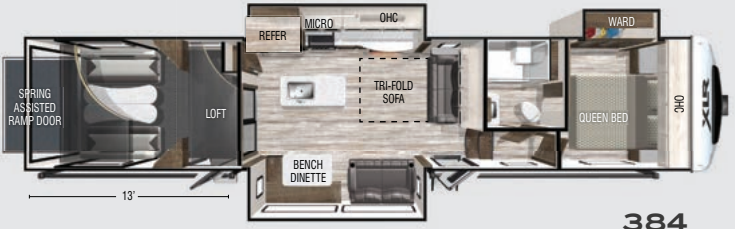
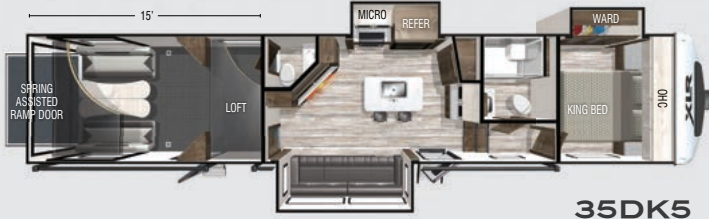
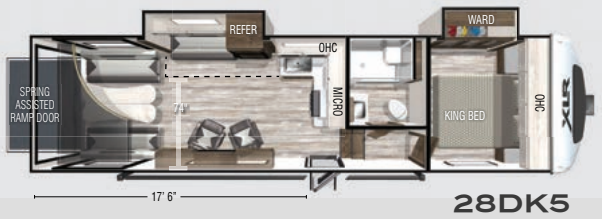
Aluminum Tread Quad Steps



Standard 21 cu/ft Furrion Refrigerator

ACTION FLOORPLANS

Our Nitro series has you covered with 11' to 17' 6" of garage space. This comprehensive lineup of Fifth Wheel floorplans offers something for everyone and features models with 2, 3, or 4 slides. Nitro is the favorite choice for your multi-use Action Camping™ needs!



	28DK5	321	33DK5	351	35DK5	384	405	407
Hitch Weight (lbs)	2,385	2,585	2,520	2,995	2,810	2,675	3,552	3,695
UVW (lbs)	10,724	12,234	12,454	12,844	13,299	14,849	15,519	14,694
CCC (lbs)	5,661	4,351	4,066	4,146	3,511	6,151	5,481	6,306
Exterior Length	35'	37' 10"	42'	40' 10"	44' 8"	44' 6"	45' 2"	45' 2"
Exterior Height	13' 2"	13' 4"	13' 4"	13' 4"	13' 4"	13' 4"	13' 4"	13' 4"
Exterior Width	102"	102"	102"	102"	102"	102"	102"	102"
Fresh Water (gal)	102	102	102	102	102	102	102	102
Gray Water (gal)	80	71	80	71	80	80	60	60
Black Water (gal)	50	82	50	82	100	50	80	40
Awning Size	20'	18'	18'	18'	20'	20'	20'	20'

STANDARDS & OPTIONS

EXTERIOR PACKAGE

- Fiberglass Front Cap with Automotive Window
- Friction Hinge Entry Door with Window
- Dual Split 30# LP Tanks
- 50AMP Service w/Transfer Switch
- Black Tank Flush
- UV Resistant Gel-Coated Fiberglass Exterior
- Radius Fully-Walkable Roof
- Singular Roof Membrane with 12-Year Warranty
- Insulated Storage Compartment Doors
- Vacuum-Bonded Aluminum-Framed Sidewalls
- Laminated and Insulated Slide Room Walls
- Fully Enclosed “Body-Armor” Underbelly w/Radiant Foil Layer
- Electric Awning w/LED Lights
- Full-LED Rear Taillights
- Undercarriage Doorside Lighting
- Alumi-Tread Quad Entry Steps (Triple on 28DK5)
- 12V Heated Holding Tanks

CHASSIS & SUSPENSION PACKAGE

- MORryde CRE3000 Suspension Enhancement
- Electric Rear Stabilizer Jacks
- 16” Radial Tires w/Nitrofill™
- Aluminum Wheels

- Dexter EZ-Lube® Axles
- Full-Sized Spare Tire
- Nev-R-Adjust® Brakes

SAFETY PACKAGE

- 12V Battery Disconnect Switch
- 80% Tint Radius Safety Glass Windows
- LP/CO Detector
- Fire Extinguisher
- No Excuses Lionshead® Tire Warranty
- TST Tire Pressure Monitoring System

INTERIOR PACKAGE

- Contemporary Interior Design Package
- First-Class Theater Seating
- Residential Microwave
- 100 Gallons Fresh Water Tank
- 17” Oven w/Cast Iron Cooktop
- Residential 20 cu/ft Refrigerator (N/A 28DK5)
- Bathroom Skylight
- Lumber Core Cabinet Stiles
- Adjustable Hidden Hinge Cabinet Hardware
- Full Extension Four-Sided Craftsman Drawers
- Radiant Foil Insulation Technology (Ceiling and Floors)
- Stainless Steel Single Basin Kitchen Sink
- 15,000 BTU Ducted Air Conditioning Distribution System
- Grate Style Sink Cover/Drying Rack
- Hardwood Cabinet Doors

- LED Accent Lighting
- Metropolitan Grey Bathroom Countertops
- Master Suite w/ XLR King Bed (NA 405, 407)
- 72” Solid Passage Doors
- Master Bedroom Accent Wall
- Black Cabinet Hardware
- Congoleum™ Stain-Resistant Vinyl Flooring
- Window Trim Package
- Roller Shades in Bedroom & Living Areas
- Central Vac w/ Dual Sweep Pans
- Solid Surface Kitchen Countertop
- Electric Fireplace (N/A 28DK5)
- Living Area Dimmable Lighting
- 2,000W Inverter

GARAGE PACKAGE

- Generator Prep
- 30 Gallon Fuel Station
- Single Electric Queen Bed w/Max Clearance Sofa/Dinette
- 5,000# Cargo Tie Downs
- Insulated Floor
- Retractable Panoramic Screen
- Weatherproof Insulated Ramp Door
- Black Night Shades
- Washer/Dryer Hookups (N/A 28DK5, 405)
- Ramp Patio Cable Kit
- Alumi-Tread Entry Steps
- Second Air Conditioner Prep

TECHNOLOGY PACKAGE

- Backup Camera Prep
- Multi-Zone Soundbar w/Built-in Subwoofer
- TV and Cable Connections in Bedroom and Garage
- Roof Satellite Prep
- Exterior Speakers
- Convenient USB Charging Stations
- Winegard Air 360 Antenna w/WiFi and 4G LTE Prep
- 50” Living Room TV

OPTIONAL EQUIPMENT

- 5.5 Generator Powered by Yamaha
- Second A/C
- Energy Mgmt System w/Triple 13.5K A/Cs
- 12 cu/ft gas/electric Refrigerator (N/A 28DK5)
- Second Electric Awning (N/A 28DK5)
- Dual Pane Windows
- Ground Control 3.0 Electric Auto Leveling System
- Solar Package - 190W Solar Panel
- Rear Patio Package: Railing and Electric Awning
- Rear Patio Steps
- 3 Season Rear Patio Door
- Full Body Paint Exterior

WHY XTRA MATTERS?

What’s XTRA BUILT? If you compare us to other Fifth Wheels, you’ll experience the Xtra quality built into every XLR Toy Hauler...it’s as simple as that! We realize that Action Campers typically use their RV’s in extreme terrain, so Xtra engineering means a stronger platform to handle the adverse conditions of Mother Nature!



AXLES, TIRES & RAMP DOORS

Dexter® axles and Lionshead® tires are the best in the business. With Lionshead “No Excuses Guarantee”, we have your back when it comes to tires and wheels. An upgraded suspension will smooth out the road and return more value as well.



ACTION CAMPING™

XTRA CONSTRUCTION FEATURES

- 1 Body Armor Protective Underbelly
- 2 Ducted Loop A/C Distribution System
- 3 Laminated and Insulated Slide Room
- 4 Best in Class 5,000-lb. Tie-Down System
- 5 Dexter® Axles
- 6 Aluminum Framed Sidewalls
- 7 Tongue & Groove Plywood Floor Decking
- 8 Gelcoat Fiberglass High Gloss Exterior

	Our radiant-reflective insulation layers are 97% efficient keeping you comfortable all year round.		MORryde® CRE3000 premium suspension smooths out even the toughest of North America’s roads.
	Heavy-duty Dexter® axles offer you the best in class carrying capacities.		Wide-Track frame design provides a more stable and stronger foundation over our skinnier competition.
	Our Nitro-Fill™ radial tires offer a “No Excuses Guarantee” unmatched in the industry.		XLR utilizes weather resistant tongue-and-groove plywood in all main living areas.
	The XLR fully enclosed “Body Armor” underbelly is insulated and uses a panel system for ease of access.		XLR has offered the strongest 5,000-lb. tie-down anchor system in the industry since day one to secure your precious cargo.
	Our vacuum-bonded technology provides superior adhesion and durability.		Our 1.5” fresh water drain provides a lightning fast way to empty your tank.