

Wildcat Maxx



"Built in the Northwest, for the Northwest"





Wildcat Maxx

Look at all these great add-ons for your purchase

Features & Available Options

8-Function Touchscreen Remote
LINC® 8-FUNCTION
TOUCHSCREEN REMOTE



Bluetooth Stereo
HDMI AM/FM/DVD/CD/USB
BLUETOOTH STEREO

Camera System
BACK-UP CAMERA PREP WITH
OPTIONAL CAMERA SYSTEM
AVAILABLE



"Maxx Travel Rack"
250 lb Load Capacity



Upgraded Serta Mattress



RESIDENTIAL
UPGRADED SERTA
PILLOW-TOP
MATTRESSES



Stainless Appliances
HIGH END STAINLESS
APPLIANCES



Awning LED Lights
EXTERIOR
MAXX-BRIGHT LED
AWING STRIP
LIGHTING



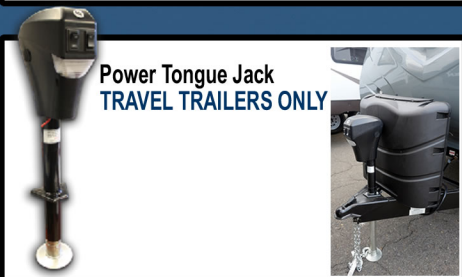
Keyless Entry
NUMERIC KEYPAD
SECURITY SYSTEM



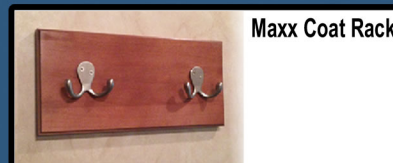
Electric Stabilizer Jacks
FRONT AND REAR
ELECTRIC
STABILIZER JACKS



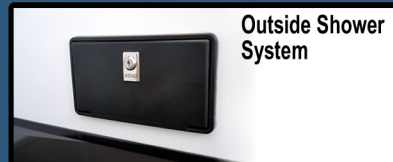
Sanitation Maintenance
BLACK TANK FLUSH



Power Tongue Jack
TRAVEL TRAILERS ONLY



Maxx Coat Rack



Outside Shower
System



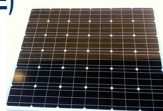
Battery Disconnect

Roadside Assistance
24 HOUR SECURITY

Coach-Net®

RV Technical & Roadside Assistance

Solar Prep
(OPTIONAL 200W SOLAR
PANELS AVAILABLE)
UP TO 400W



1" Thick, Insulated
Slam-Latch Baggage
Doors On
Extra-large Exterior
Storage

LED Lights
MAXX BRIGHT COMPLETE COACH
LED LIGHT PACKAGE



Wildcat

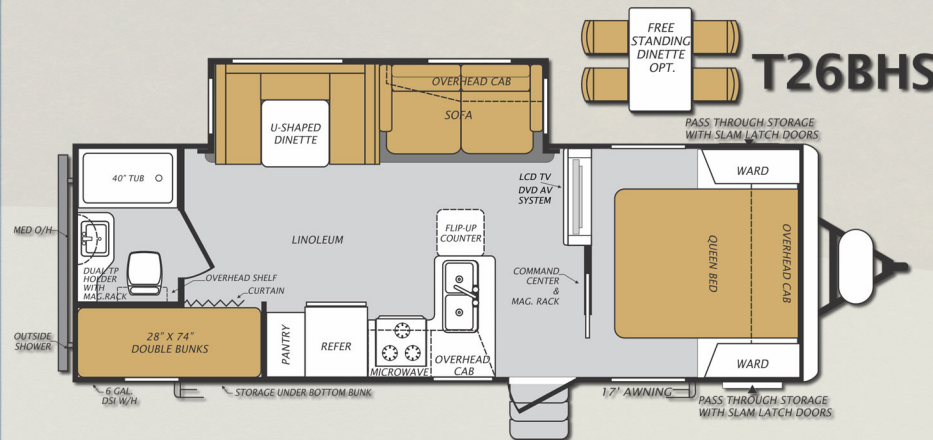
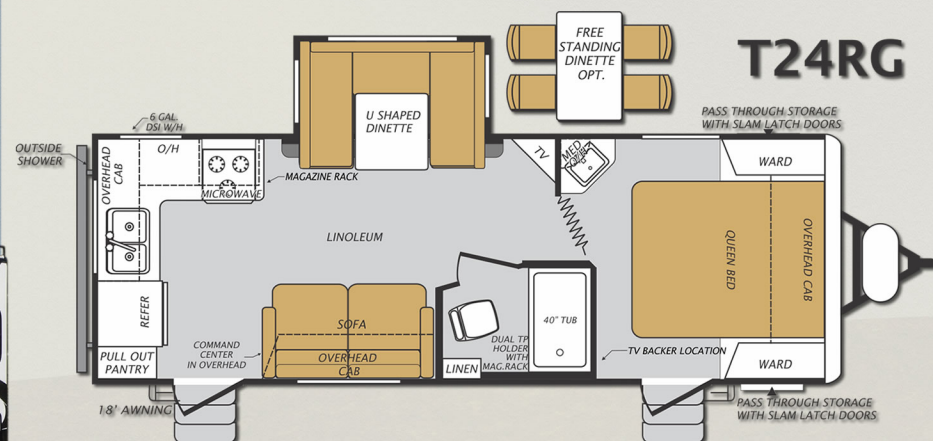
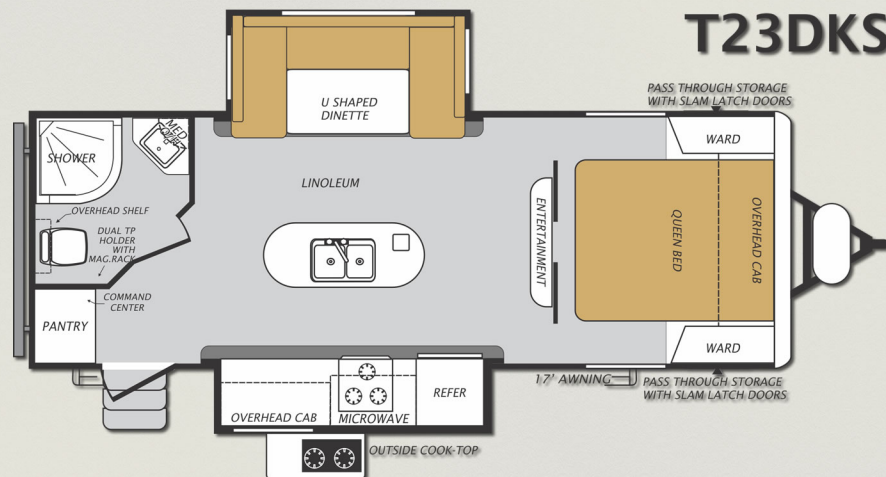
Maxx

1/2 Ton Travel Trailer Floor Plans



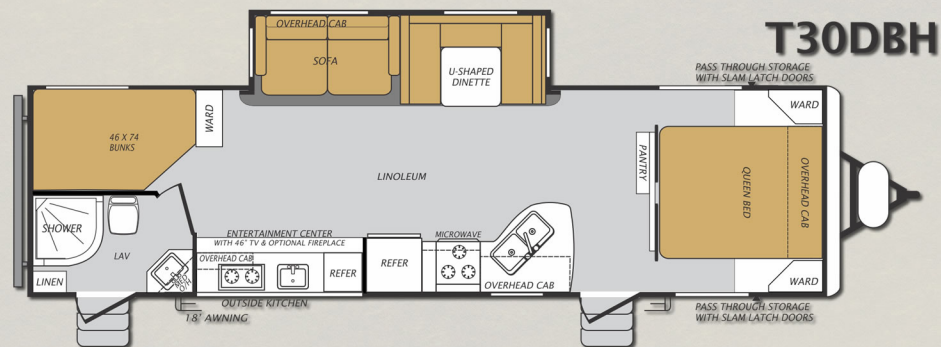
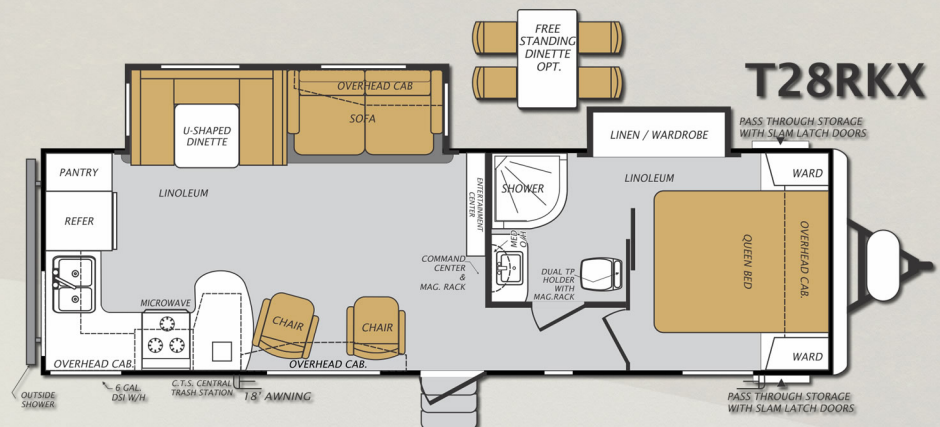
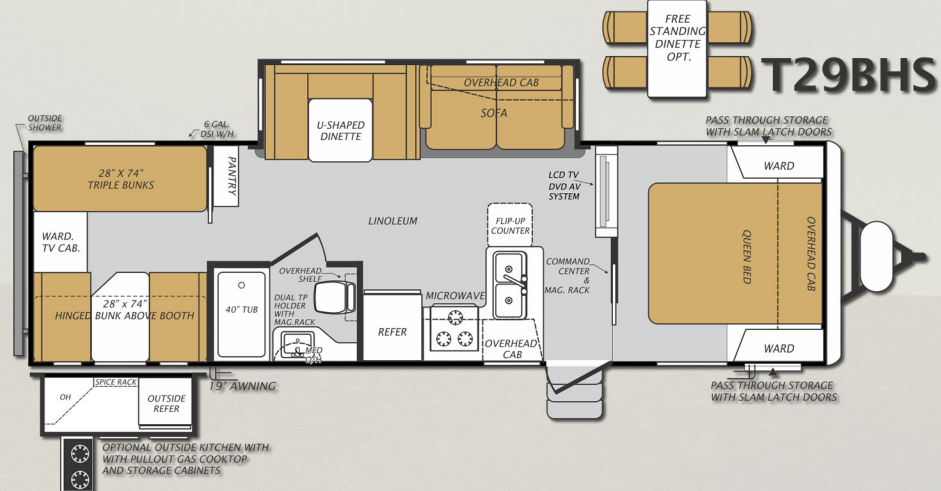
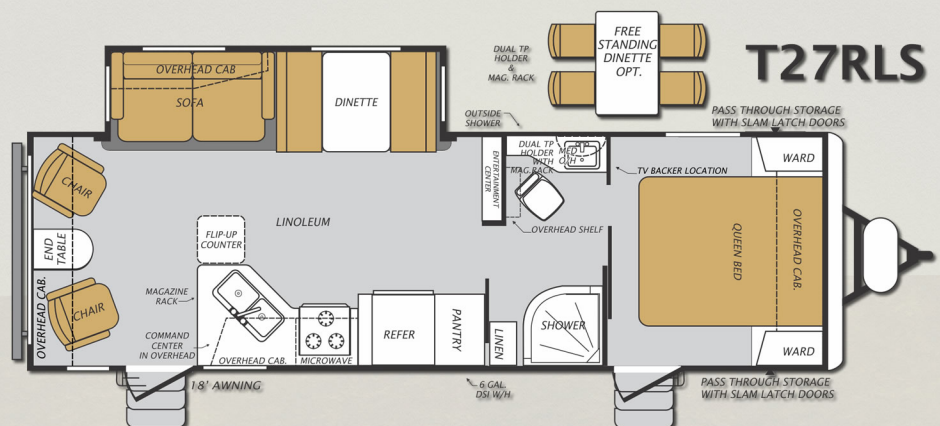
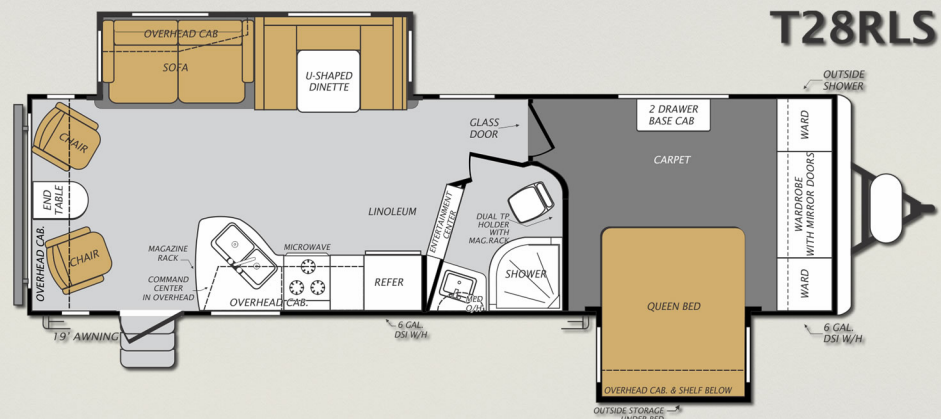
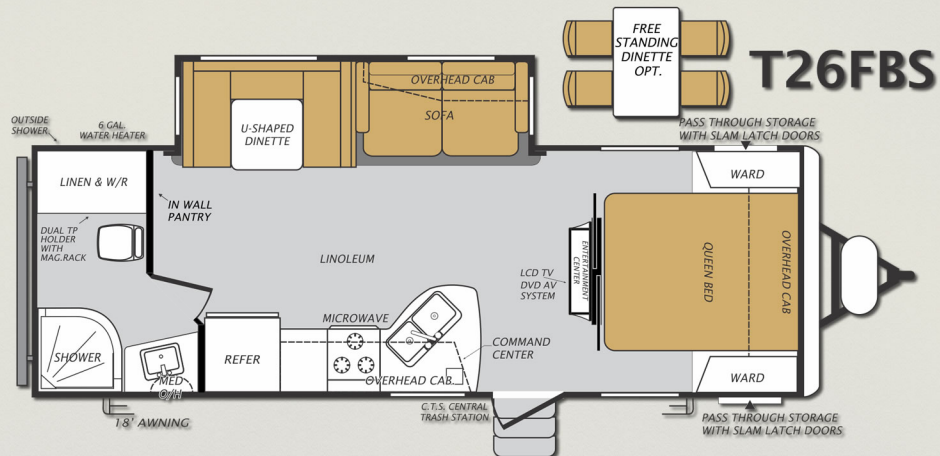
FEATURES INCLUDE

- Solar Prep
- Large LCD HDTV
- Back-up Camera Prep
- Heated Tanks
- Complete Interior & Exterior LED Lighting
- Vented Attic
- 35K BTU Furnace
- Bluetooth Stereo
- Residential Serta Pillow-top Mattress
- Battery Disconnect
- Awning LED Lights
- Maxx Coat Rack
- Stainless Steel Appearance Appliances
- 8 Function LCD Remote Control Touch Pad
- Aluminum Framed & Vacuum Bonded
- All Season Construction



	T23DKS	T24RG	T26BHS	T26FBS	T27RLS	T28RKX	T28RLS	T29BHS	T30DBH
Exterior Length	26 FT 4 IN	28 FT 9 IN	29 FT 10 IN	29 FT 11 IN	32 FT 3 IN	33 FT 3 IN	35 FT 2 IN	33 FT 8 IN	35 FT 1 IN
Exterior Height *	11 FT 4 IN	11 FT 4 IN	11 FT 4 IN	11 FT 4 IN	11 FT 4 IN	11 FT 4 IN	11 FT 4 IN	11 FT 4 IN	11 FT 4 IN
Exterior Width	8 FT	8 FT	8 FT	8 FT	8 FT	8 FT	8 FT	8 FT	8 FT
Fresh Water Capacity *	67 GAL*	67 GAL*	67 GAL*	67 GAL*	67 GAL*	67 GAL*	67 GAL*	67 GAL*	67 GAL*
Grey Water Tank Size	31 GAL	31 GAL	31 GAL	31 GAL	31 GAL	31 GAL	31 GAL	31 GAL	31 GAL
Black Water Tank Size	39 GAL	31 GAL	31 GAL	31 GAL	31 GAL	31 GAL	31 GAL	31 GAL	31 GAL
Awning Size	17 FT	18 FT	17 FT	18 FT	18 FT	18 FT	19 FT	19 FT	18 FT
Dry Hitch Weight	823 LB	863 LB	787 LB	731 LB	826 LB	935 LB	1094 LB	997 LB	1067 LB
Unloaded Vehicle Weight	6,454 LB	6,176 LB	6,624 LB	6,730 LB	7,145 LB	7,412 LB	7,879 LB	7,366 LB	7,757 LB
Gross Vehicle Weight (GVWR)	10,983 LB	10,823 LB	10,947 LB	10,891 LB	10,986 LB	11,095 LB	11,254 LB	11,157 LB	11,263 LB
Cargo Carrying Capacity	4,529 LB	4,647 LB	4,323 LB	4,161 LB	3,841 LB	3,683 LB	3,375 LB	3,791 LB	3,479 LB

* Exterior Height Includes Air Conditioner
* Fresh Water Capacity Includes Water Heater



Wildcat

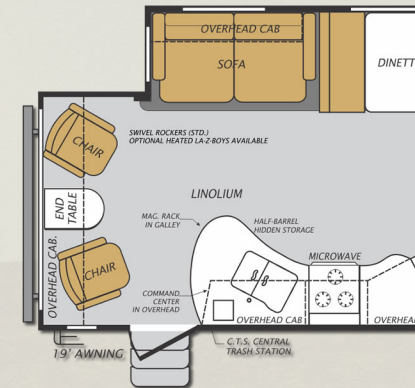
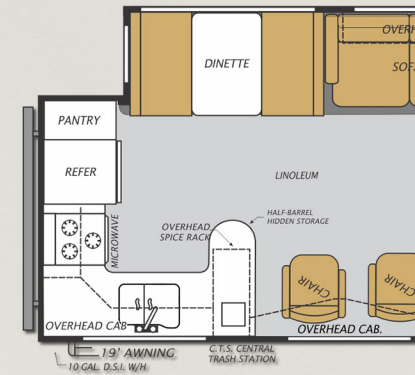
Standard Series Fifth Wheel Floor Plans

Maxx



FEATURES INCLUDE

- 46" LCD HDTV (Most Models)
- Samsung Starian Solid Surface Counters (Kitchen Only)
- Solar Prep
- Back-up Camera Prep
- Heated Tanks
- Complete Interior & Exterior LED Lighting
- Vented Attic
- 35K BTU Furnace
- Bluetooth Stereo
- Residential Serta Pillow-top Mattress
- Residential 60" X 80" Serta Trump Home Pillow Top Mattress
- Battery Disconnect
- Awning LED Lights
- Maxx Coat Rack
- Stainless Steel Appearance Appliances
- 8' Cubic Refer
- 16" 'E' Range Aluminum Wheels & Tires
- 8 Function LCD Remote Control Touch Pad
- Aluminum Framed & Vacuum Bonded
- All Season Construction
- Fantastic Fan
- 10 Gallon DSI Water Heater
- Residential 60" X 80" Serta Trump Home Pillow Top Mattress



	F282F
Exterior Length	31 FT
Exterior Height *	12 FT
Exterior Width	8 FT
Fresh Water Capacity *	81 GA
Grey Water Tank Size	108 G
Black Water Tank Size	54 GA
Awning Size	19 FT
Dry Hitch Weight	1,455
Unloaded Vehicle Weight	8,509
Gross Vehicle Weight (GVWR)	13,450
Cargo Carrying Capacity	4,946
* Exterior Height Includes Air Conditioner	
* Fresh Water Capacity Includes Water	

Wildcat

Maxx

Half Ton Series
Fifth Wheel Floor Plans

FEATURES INCLUDE

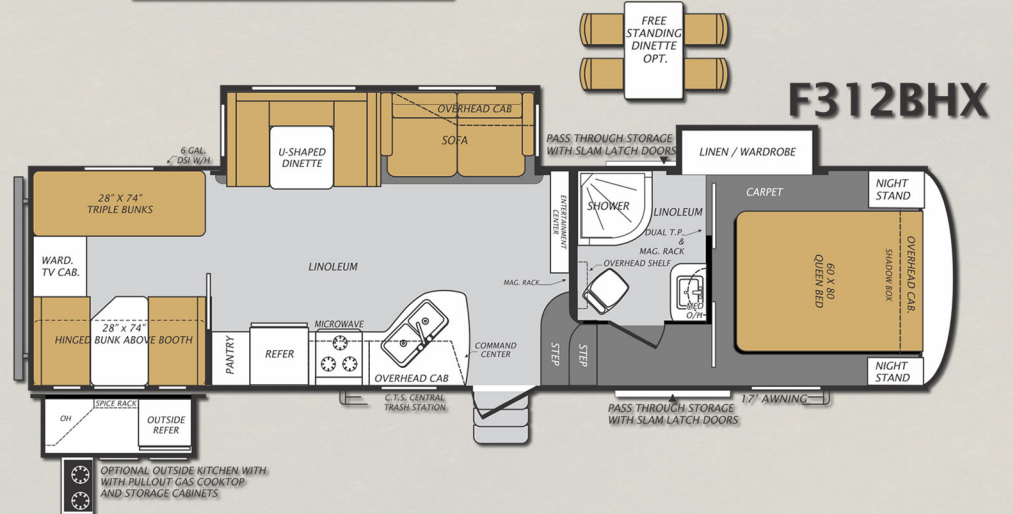
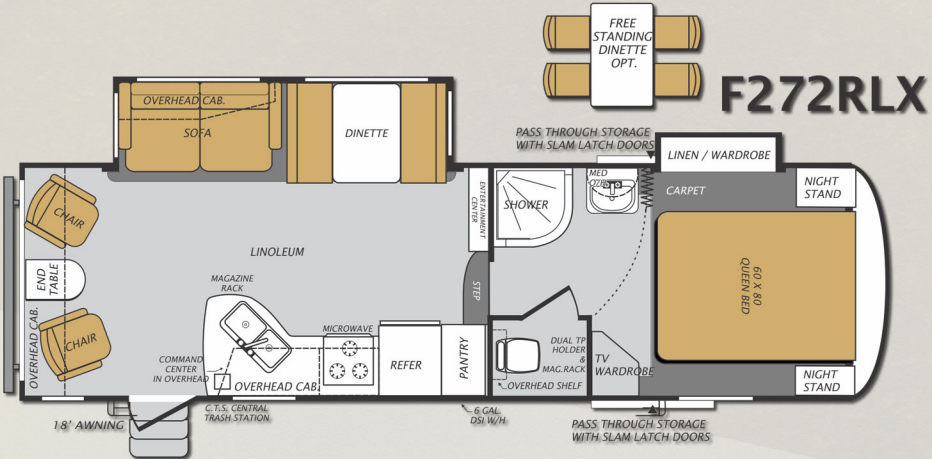
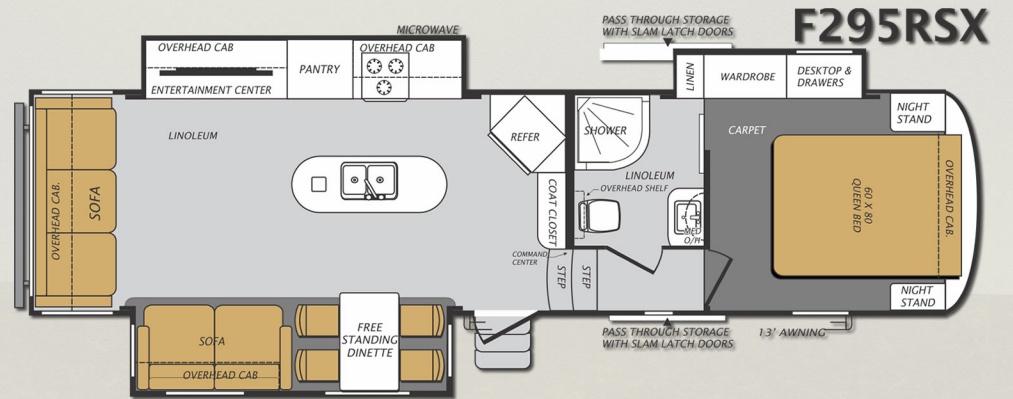
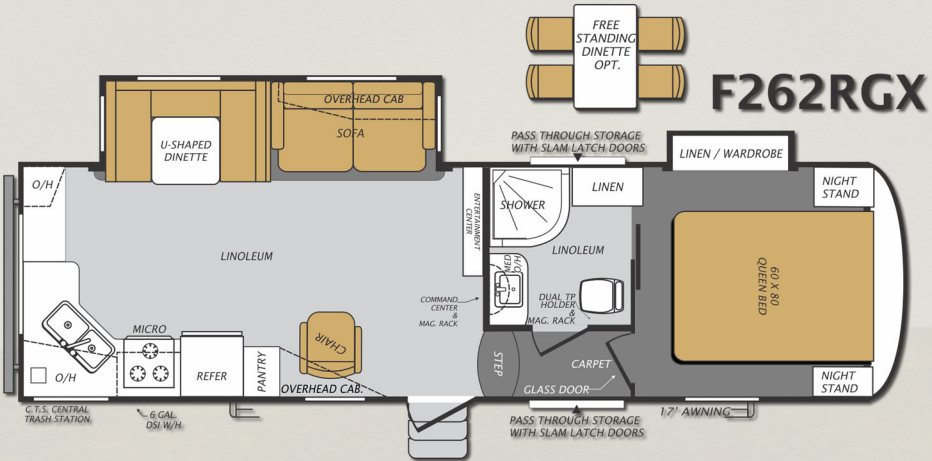
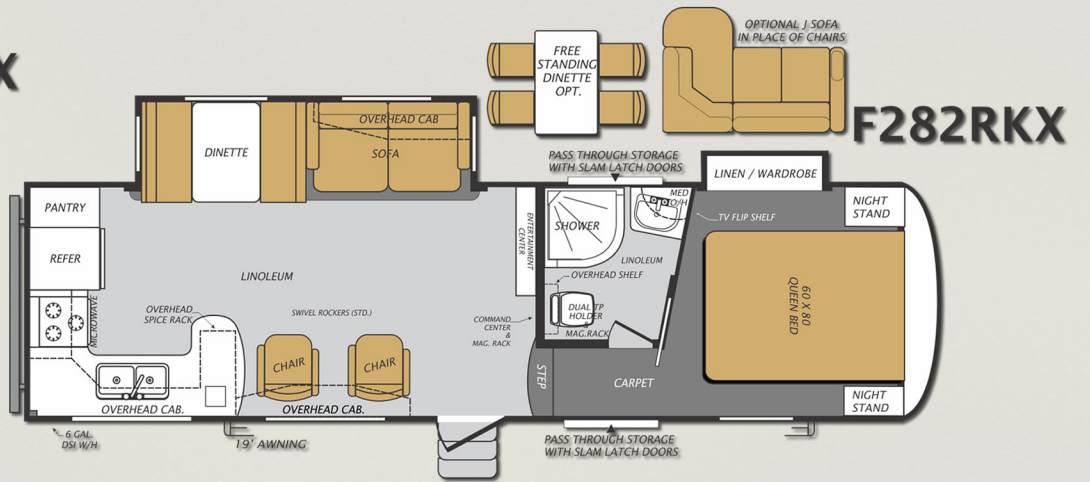
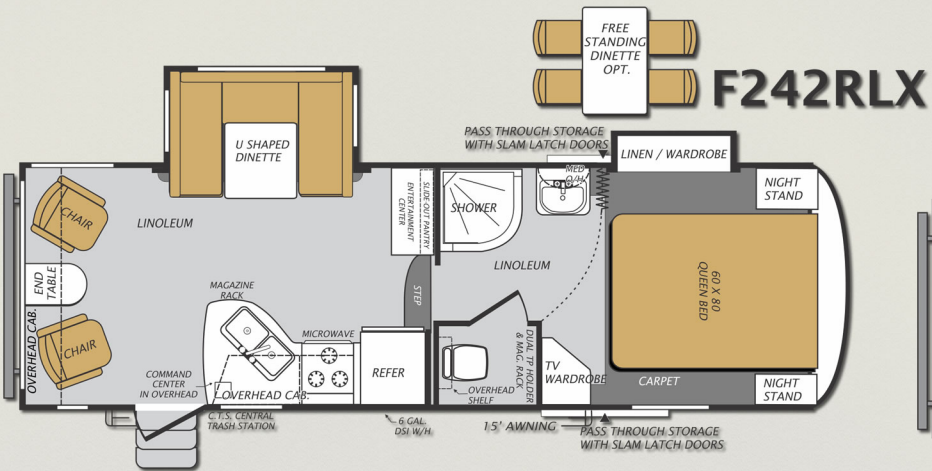
- Large LCD HDTV
- Solar Prep
- Back-up Camera Prep
- Heated Tanks
- Complete Interior & Exterior LED Lighting
- Vented Attic
- 35K BTU Furnace
- Bluetooth Stereo
- Residential Serta Pillow-top Mattress
- Battery Disconnect
- Awning LED Lights
- Maxx Coat Rack
- Stainless Steel Appearance Appliances
- 8 Function LCD Remote Control Touch Pad
- Aluminum Framed & Vacuum Bonded
- All Season Construction



	F242RLX	F262RGX	F272RLX	F282RKX	F295RSX	F312BHX
Exterior Length	29 FT 5 IN	31 FT 7 IN	31 FT 4 IN	31 FT 8 IN	33 FT 6 IN	35 FT 7 IN
Exterior Height *	12 FT 2 IN	12 FT 7 IN	12 FT 10 IN	12 FT 5 IN	12 FT 10 IN	12 FT 6 IN
Exterior Width	8 FT	8 FT	8 FT	8 FT	8 FT	8 FT
Fresh Water Capacity *	81 GAL*	81 GAL*	81 GAL*	81 GAL*	81 GAL*	81 GAL*
Grey Water Tank Size	78 GAL	108 GAL	108 GAL	108 GAL	91 GAL	108 GAL
Black Water Tank Size	39 GAL	54 GAL	54 GAL	54 GAL	54 GAL	54 GAL
Awning Size	15 FT	17 FT	18 FT	19 FT	13 FT	17 FT
Dry Hitch Weight	1,224 LB	1,594 LB	1,430 LB	1,344 LB	1,670 LB	1,629 LB
Unloaded Vehicle Weight	7,678 LB	8,268 LB	8,533 LB	8,490 LB	9,607 LB	8,879 LB
Gross Vehicle Weight (GVWR)	11,384 LB	11,754 LB	11,590 LB	11,504 LB	11,830 LB	11,789 LB
Cargo Carrying Capacity	3,706 LB	3,486 LB	3,057 LB	2,955 LB	2,223 LB	2,851 LB

* Exterior Height Includes Air Conditioner

* Fresh Water Capacity Includes Water Heater



Wildcat Maxx



Optional Solid Surface Countertops



Decor Options



Interior Features & Options

LIVING ROOM

EXTRA LARGE BOOTH DINETTE WITH STORAGE UNDER & DUAL PEDESTAL TABLE
TRI-FOLD SOFA HIDE-A-BED SLEEPER SOFA
LARGE PANORAMIC PICTURE WINDOW AT ALL DINETTES
OVERHEAD CABINETS IN SLIDE ROOM (DINNER PLATE DEPTH)
PLEATED NIGHT SHADES
AM/FM/CD/DVD/USB/AV SYSTEM WITH REMOTE AND BLUETOOTH TECHNOLOGY
26", 32", 40" OR 46" LCD 1080P FLAT PANEL TV WITH HDMI HOOK-UP
RCA PLUGS FOR GAME SYSTEMS OR DIGITAL CAMERAS
TALLER 6" HIGH SLIDE-OUT HEIGHT (1/2 TON FIFTH WHEELS)
TALLER 8" HIGH SLIDE-OUT HEIGHT (STANDARD 5TH WHEELS)
SATELLITE AND CABLE TV HOOK-UPS
12V LED DECORATIVE LIGHTING IN SLIDE-OUTS
HIGH BACK, EXTRA-LARGE SWIVEL ROCKING CHAIRS (SELECT MODELS)
SLIDER WINDOWS AT ENDS OF SLIDE-OUTS
MAXX BRIGHT COMPLETE INTERIOR LED LIGHTING
RESIDENTIAL CARPETING WITH STAIN GUARD
MAGAZINE RACK
COMMAND CENTER WITH MONITOR PANEL
SURROUND SOUND SPEAKERS
WALL CLOCK

EXECUTIVE KITCHEN

RESIDENTIAL SHAKER STYLE HARDWOOD CABINET DOORS
RESIDENTIAL HIDDEN HINGES
BRUSHED NICKEL FINISH DOOR AND DRAWER HARDWARE
RESIDENTIAL FULL-EXTENSION STEEL BALL-BEARING DRAWER GUIDES
STORAGE ABOVE REFRIGERATOR (MOST MODELS)
UPGRADED MICROWAVE OVEN
BRUSHED NICKEL PULL-OUT RESIDENTIAL STYLE METAL HIGH RISE FAUCET WITH OPTIONAL SOLID SURFACE COUNTERS
SOLID SURFACE COUNTERTOPS (STANDARD 5TH WHEELS)
8' CUBIC REFRIGERATOR (INCLUDED ON STANDARD 5TH WHEELS)
EXTRA LARGE DUAL-BASIN KITCHEN SINK WITH FLUSH MOUNT DUAL SINK COVERS
DEEP STORAGE OVERHEAD KITCHEN CABINETS
EXTRA LARGE POTS & PANS DRAWER (MOST MODELS)
TOE KICKS IN KITCHEN CABINET BASE
GLUED DOWN RESIDENTIAL TREKK LINOLEUM
22" OVEN AND 3-BURNER RANGE WITH COVER AND BUILT IN KNIFE RACK
RESIDENTIAL STYLE RANGE VENT WITH LIGHT AND FAN
PAPER TOWEL RACK
CUTLERY DRAWER
KITCHEN WALL BORDER
CUTTING BOARD
KNIFE RACK
C.T.S. (CENTRAL TRASH SYSTEM) (MOST MODELS)

BATHROOM

PORCELAIN TOILET WITH FOOT PEDAL FLUSH
BUILT IN WOOD MEDICINE CABINET
GFI RECEPTS IN BATHROOM
RESIDENTIAL SHOWER SURROUND WITH RADIUS GLASS SHOWER DOORS
SKYLIGHT IN SHOWER
POWER VENT FAN
BUILT-IN WOOD DUAL TOILET PAPER HOLDER WITH MAGAZINE RACK
SOAP DISH
TOOTH BRUSH HOLDER
DUAL TOWEL RACKS
RADIUS GLASS SHOWER DOORS

BEDROOM

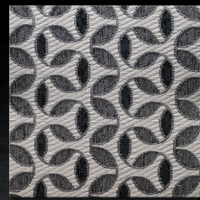
PILLOW-TOP RESIDENTIAL QUEEN BED
FULL STAND-UP HEIGHT IN ALL BEDROOMS
FLAT FLOOR BEDROOMS IN ALL 5TH WHEELS (NO MORE STEPS ON SIDE OF BED)
GAS STRUTS TO LIFT BED FOR UNDER-BED STORAGE
FULLY FINISHED BED BASES
COMPLETE LED LIGHTING INCLUDING READING LIGHTS
UPGRADED RESIDENTIAL QUEEN-SIZED BEDSPREAD AND HEADBOARD
BEDROOM ROOF VENT



Marble



**Weathered
Slate**



**Ebony
& Ivory**



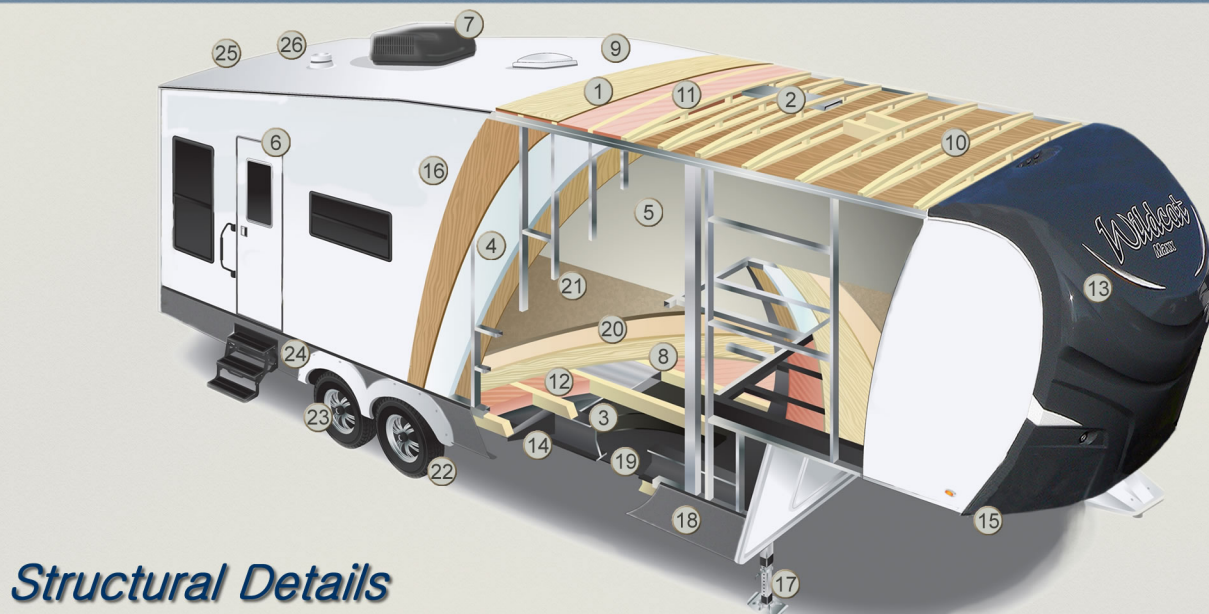
**Cortez Trekk Vinyl
Woodgrain Flooring**



**Dolomite Trekk Vinyl
Tile Flooring**

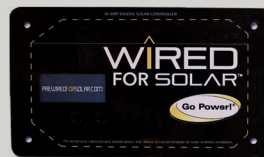


**Solid Surface
Countertop Option**



Structural Details

1. 3/8" Roof Decking
2. Insulated A/C Duct-work
3. Heavy Duty Steel I-Beam Chassis
4. High Density R10 Block Foam Insulation In Walls
5. Vinyl Covered Interior Decorative Wall Board
6. Full Size Radius Entry Door
7. 13.5K BTU Air Conditioner
8. 5/8" Seamless Floor Decking
9. One-Piece ALPHA SUPER FLEX 3 Roof Membrane (12 Year Warranty)
10. 5" Engineered and Fabricated Roof Rafters on 16" Center
11. 2 Layers of (R-7) Fiberglass Roof & End Wall Insulation Plus Reflective (R-38) with Astrofoil
12. (R-7) Fiberglass Floor Insulation Plus Reflective (R-38) with Astrofoil
13. Aerodynamic Gel-coated Fiberglass Front Cap
14. ALL SEASON 12 V Heating Pads On All Tanks
15. Optimized Turning Radius for Today's Short Bed Trucks
16. 2" Thick ALUMACAT™ Vacuum-Bonded Fiberglass Laminated Sidewalls
17. Spring-Loaded Quick Release Jack Pins on Landing Gear Legs
18. Radius-Wrap Aluminum Skirt Metal
19. Fully Enclosed Underbelly with (R-7) Fiberglass Insulation and (R-38) Astrofoil under Holding Tank
20. Premium Carpet Padding
21. Syntec Residential Carpeting with Stain Guard
22. Load Range 'D' 15" Radial Tires (Standard) or Optional Load Range 'E' 16" Tires
23. E-Z Lube Axles
24. Molded Fender Skirt
25. Pre-Wired for Back-Up Camera
26. Vented Attic



Optional 200 Watt Solar Panels available (Up to 400 Watts)

Climattech™ COLD WEATHER ALL SEASONS INSULATION PACKAGE

- UNDERBELLY - REFLECTIVE 'R-38' ASTROFOIL INSULATION + R7 FIBERGLASS INSULATION
- R-38 RATING IN CEILING, FLOORS, END WALLS AND UNDERBELLY

"This Technology, developed by NASA, has a calculated, reflective R-38 value and can double your heating and cooling efficiencies."

- CEILING - REFLECTIVE 'R-38' ASTROFOIL INSULATION + 2 LAYERS OF R7 FIBERGLASS INSULATION
- R-10 ULTRA DENSE BLOCK FOAM INSULATION IN VACUUM BONDED SIDE WALL INSULATION
- R-10 ULTRA DENSE BLOCK FOAM INSULATION IN ALL 3 VACUUM BONDED WALLS OF SLIDE-OUT & CEILING
- REFLECTIVE 'R-38' ASTROFOIL INSULATION IN SLIDE-OUT FLOOR
- R-10 ULTRA DENSE BLOCK FOAM INSULATION IN VACUUM BONDED RAISED UPPER DECK IN 5TH WHEELS
- DUCTED HEAT TO OUTSIDE STORAGE COMPARTMENT IN ALL 5TH WHEELS
- 1" THICK MOTORHOME STYLE SLAM-LATCH EXTERIOR BAGGAGE DOORS
- 12 VOLT HEATING PADS ON ALL TANKS



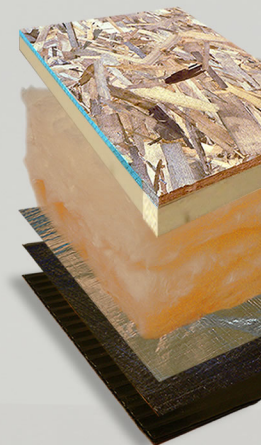
Heavy Duty Aluminum Framing

We use heavier tubing than most of our competition. Our vacuum bonded, two inch side walls are insulated with solid block foam.



Double Insulated Ceiling With Reflective Foil Standard

Our products are designed with the latest insulation products and engineered to withstand extreme environments. Insulation and reflective foil is added above the protective water barriers on the bottom of each unit. We also add vented areas in the ducting to heat each units underbelly.



R-38 Rating In Ceiling And Floors

This Is A Space Age Insulation System. Our System Has A Calculated R Value Of 38 At 80 Degrees Fahrenheit And Can Double Your Heating And Cooling Efficiencies



Wildcat Maxx



Dealer Address

Colton RV & Marine
3122 Niagara Falls Blvd
North Tonawanda, NY 14120
(716) 694-0188
www.ColtonRV.com

Colton RV & Marine
3443 Southwestern Blvd
Orchard Park, NY 14127
(716) 957-3250
www.Coltonrv.com



Forest River, Inc. encourages our customers to purchase their Forest River products from a local dealership whenever possible for the following reasons:

- 1) Forest River, Inc. dealers are independently owned and operated businesses so priority service and scheduling is at their discretion and is often provided to customers that purchased their unit at that dealership.
- 2) Purchasing locally allows customers to establish meaningful relationships with a dealer, enhancing the RV experience through assistance with product questions, user tips or RV regulations for your state or country, and much more!
- 3) Canadian customers must meet requirements to bring an RV purchased out of the country to their home. These requirements may involve additional inspections and certifications, taxes and fees. Your local Canadian Dealer is a professional at meeting these requirements.
- 4) Scheduling timely warranty repairs and adjustments through a local dealership provides far greater flexibility and convenience to you, the customer!

It is the goal of Forest River, Inc. that all of our RV owners fully enjoy the RV experience and that customer satisfaction meets or exceeds their expectations!

24/7 EMERGENCY ROADSIDE ASSISTANCE

For a worry-free ownership experience

Forest River includes one year of Coach-Net RV Technical & Roadside Assistance with each RV purchase. Whether new to the RV lifestyle or an experienced RV enthusiast, Forest River owners have 24/7 access to technical, operational and emergency road service coverage throughout the US & Canada. Coach-Net's fast, dependable service is just a phone call away.

Coach-Net®

RV Technical & Roadside Assistance

Floor plans and specifications are based on the latest product information. Forest River, Inc. reserves the right to make changes in drawings and specifications at any time without notice and assumes no responsibility for any errors in the document. The model number does not necessarily reflect the overall length of a particular unit. All standards and features pertain to models manufactured after October 1st 2014.

FREE MEMBERSHIP
to Forest River Owners' Group

www.forestriverfrog.com



Learn More
Scan this barcode using
a QR Reader on your
smart phone to learn
more about Forest River.



A Berkshire Hathaway company.