

Cardinal

BY FOREST RIVER

WIDE BODY FIFTH WHEELS

Cardinal is offered in a selection of five appealing exteriors.



STANDARD GRAPHICS



FULL BODY PAINT SILVER QUARTZ



FULL BODY PAINT MOCHA PEARL



FULL BODY PAINT SILVER STAR



FULL BODY PAINT GARNET NIGHT



Cardinal Owner "Digital Kit" App

Now you can have your Owner's Manual with you wherever you are. Download our FREE App from the App Store or Google Play and you'll have the information right at your fingertips.

CARDINAL

3603 S. Nappanee St. • Elkhart, IN 46517
(574) 296-7700 • www.forestriverinc.com/cardinal
www.forestriveraccessories.com



Your CARDINAL Dealer

Budget RV Outlet of Buffalo
4817 Lake Ave.
Blasdell, NY 14219
716-685-3546
www.budgetrvoutlet.com

All information contained in this brochure is believed to be accurate at the time of publication. However, during the model year, it may be necessary to make revisions and Forest River, Inc., reserves the right to make all such changes without notice, including prices, colors, materials, equipment and specifications as well as the addition of new models and the discontinuance of models shown in this brochure. Therefore, please consult with your Forest River dealer and confirm the existence of any materials, design or specifications that are material to your purchase decision. ©2017 Cardinal, a Division of Forest River, Inc., a Berkshire Hathaway company. All rights reserved. 2/17



PRE-DELIVERY INSPECTION FACILITY

20,000 square feet of quality assurance. The bare essentials for a premium product. This state-of-the-art facility gives immediate daily feedback to production for quality assurance in every unit built.

24/7 EMERGENCY ROADSIDE ASSISTANCE

For a worry-free ownership experience Forest River includes one

Coach-Net®

RV Technical & Roadside Assistance

year of Coach-Net RV Technical & Roadside Assistance with each RV purchase. Whether new to the RV lifestyle or an experienced RV enthusiast, Forest River owners have 24/7 access to technical, operational and emergency road service coverage throughout the US & Canada. Coach-Net's fast, dependable service is just a phone call away.



Learn More

Scan this barcode using a QR Reader on your smart phone to learn more about Forest River.



A Berkshire Hathaway company.

FREE MEMBERSHIP
to Forest River Owners' Group

www.forestriverfrog.com



CUSTOMER SATISFACTION



www.ForestRiverBuyLocal.com

Cardinal

BY FOREST RIVER

WIDE BODY FIFTH WHEELS





There Is Someplace Like Home

Get away from it all with the ultimate in convenience and luxury. Cardinal stands out with a selection of spacious slide out floor plans, luxurious residential styling, and all the comforts of home. There's plenty of room for family and friends to enjoy life's adventures in style.

3456RL's contemporary open concept living area features a standard power lift 58" LED TV that's cable and satellite ready. An electric fireplace adds ambience. The kitchen island has a dual bowl, stainless steel, under mount sink with a convenient, high-rise, single handle, pull-down faucet, and easy to maintain LG solid surface, polished countertops. The stainless steel residential refrigerator with 2000W inverter has an in-door ice maker. Cook up something delicious on the 3-burner, high output range with a 22" oven and flush mount, solid surface range cover, or the 30" convection microwave.

This luxury bath has a one-piece fiberglass shower with an adjustable shower head, a skylight, a large double vanity with Kensington Walnut hardwood cabinets, a solid surface countertop, and twin integrated porcelain sinks, plus two full size medicine cabinets.



Huge living area windows are accessorized with day/night roller shades. Shown with Eclipse decor, Kensington Walnut cabinets and bonded leather theater seats.



A king size, premier inner spring mattress is a Cardinal standard. Bedrooms also include a residential headboard, bedspread, decorative pillows, a 32" LED TV, mirrored cedar lined wardrobes, a Dyson DC35 cordless vacuum and stackable washer/dryer prep. (Dual electrical supply allows the washer/dryer to operate simultaneously.)

Cardinal

BY FOREST RIVER

Cardinal is big on storage features so you can stock up for an extended stay. The pantry has durable hardwood storage drawers. Extra deep, flush-floor slide rooms are framed with beautiful Monticello Maple hardwood fascia. Rich, raised panel hardwood cabinetry offers abundant storage space.

Adventurous cooks have plenty of room to maneuver in this versatile kitchen with stainless steel appliances, a deep, mega bowl stainless steel sink with a high rise, pull-out faucet, solid surface countertops, and an attractive glass tile backsplash.



A one-piece fiberglass residential shower with seat, skylight, large medicine cabinet, solid surface countertop and two drawer hardwood vanity are standard amenities.

3950TZ

The rear living area in this spacious model is standard equipped with a large 58" LED TV on a power lift, with an electric fireplace, energy efficient LED lighting, and privacy enhancing day/night roller shades. Shown in Sand decor with Monticello Maple hardwoods, bonded leather upholstery and optional stainless steel appliance package.



Entertain In Style



3850RL

Dine in with a great view. Large picture windows on the slide outs offer plenty of natural light. The open concept, opposing slide 3850RL kitchen features an island with a deep, mega bowl stainless steel sink, a high-rise, pull-out faucet and solid surface countertops. The cooktop has a residential glass tile backsplash. Cardinal's rich, solid Monticello Maple hardwood cabinets are equipped with hidden hinges. LED overhead lighting throughout brightens the living spaces. The power mounted 58" LED TV retracts into the entertainment center to reveal large windows for plenty of fresh air and natural light. An electric fireplace and ceiling fan are standard. Sand decor is shown with the optional stainless steel package.

3850RL features a large residential size, double door pantry. There's plenty of storage space to stock up for an extended stay.



Hallway wardrobe closets provide generous storage and are standard on the 3850RL.



3825FL

Cooks appreciate the layout of the 3825FL's convenient kitchen. This spacious model is standard equipped with a large 58" LED TV and electric fireplace, energy efficient LED lighting, and privacy enhancing day/night roller shades. Shown in Harvest decor, with rich, Kensington Walnut hardwood cabinetry, and plush bonded leather upholstery.



Cardinal
BY FOREST RIVER

RESIDENTIAL STYLE WIDE BODY FIFTH WHEELS

Welcome Home



Cardinal bedrooms are standard equipped with a 32" LED TV, king size bed, and cedar lined dresser. This model includes a contemporary textured glass bedroom door. All Cardinals are prepped for a stackable washer/dryer. Shown in Harvest decor with Kensington Walnut hardwood cabinets.





3250RL

Looking for a fifth wheel under 35' loaded with luxury residential amenities? The 3250RL features a 90" hide-a-bed sofa, with glass front, Kensington Walnut hardwood cabinets, slide fascia and wainscoting. Additional homestyle comforts include: LED lighting throughout, a dinette with storage under the table and chairs (two dinette seats, two folding chairs), a residential refrigerator, a convenient appliance garage, theater seating, plus day/night roller shades. Eclipse decor is shown with the optional stainless steel package.

Enjoy all the comforts of home wherever you travel...from the infield to the great outdoors, living is easy in a Cardinal Fifth Wheel.



3875FB



3875FB kitchen standards includes a free standing dinette, stove, convection microwave, a deep, stainless steel mega bowl sink, a high-rise pull-out faucet and a large pantry with a textured glass door. Solid surface countertops with sink and stove top covers extend work space. The optional stainless steel package ups the style factor. Shown in Eclipse decor with Kensington Walnut hardwood cabinetry.

This luxury bath features a residential height vanity with a polished, solid surface counter top, an integrated bowl sink, mirrored medicine cabinet and porcelain toilet with foot flush convenience. The "Mega" fiberglass molded shower has a glass shower door, an adjustable shower head, and skylight. Added conveniences include a Maxx Air fan with rain sensor and remote control, a cedar lined closet, a Dyson DC35 cordless vacuum and stackable washer/dryer prep.

DECOR

ECLIPSE



SAND



HARVEST



HARDWOODS

STANDARDS

INTERIOR

- Kensington Walnut or Monticello Maple Hardwood Raised Panel Glazed Cabinet Doors and Drawers
- Hardwood Cabinet Frames (Stiles)
- Crown Molding Cabinet Accents
- Crown Molding Ceiling Trim
- Residential Hidden Hinge Adjustable Cabinet Hardware
- Solid Wood (Baltic Birch) Drawer Boxes
- Ball Bearing, Full Extension Drawer Guides
- Beauflor® Flooring (7-Year Cold Crack warranty)
- Residential Carpet
- Wainscoting
- Satin Nickel Plumbing Fixtures
- Solid Wood Slide-out Fascia Frame
- Decorative Solid Wood Frame Entry Door
- Solid Wood Exit Assist Handle
- Cathedral Ceilings Throughout

GALLEY

- LG Solid Surface Polished Counter Tops with Under Mount Sink (15 Year warranty)
- Dual Bowl "Giant" Stainless Steel Kitchen Sink
- High Rise Single Handle Pull-down Kitchen Faucet
- Maxx Air Fan with Rain Sensor and Remote
- Flush Floor Galley Slides
- Coat Closet (Where applicable)
- Hardwood Drawers in Pantry

INTERIOR LED LIGHTING

- LED Lighting Throughout
- Indirect LED Lighting
- Decorative Ceiling Light above Dinette
- Ceiling Fan
- Pendant Lights in Galley
- Dimmer Switch (Living area only)

FURNITURE/WINDOW COVERINGS

- Three Seat Leather Rear Sofa with Hide-A-Bed
- Bonded Leather Theater Seats with Lifetime Frame Warranty
- Free Standing Dinette Table with Dual Leafs and Lift-up Storage
- (4) Residential Chairs (2) with Flip-up Storage (2) Folding
- Day/Night Roller Shades (Living area)
- Night Roller Shades (Bedroom)
- Designer Hard Valance Window Treatments (Where available)
- Designer Soffits with LED Lighting (Where available)

BATHROOM

- Maxx Air Fan with Rain Sensor and Remote

- Solid Surface Polished Vanity Counter Top with Integrated Bowl (Residential height) (Double bowl sinks on 3456RL)
- Porcelain Toilet with Foot Flush
- "Mega" Fiberglass Molded Shower
- Shower Skylight/Dome
- Glass Shower Door
- Adjustable Shower Head
- Medicine Cabinet with Mirrored Door
- Dedicated Heat and A/C Duct

BEDROOM

- King Bed, Premium, Innerspring Mattress
- Solid Wood Head Board
- Designer Bedspread, Pillows and Sham
- Full Height Hanging Wardrobe
- Stackable/Combo Washer/Dryer Prep
- Washer/Dryer Dual Electrical Outlets (Operates Washer/Dryer at same time)
- Shoe Caddy
- Cubby Storage
- Chest of Drawers
- Cedar Lined Closet and Drawers
- Under Bed Storage
- Solid Hardwood Slide-out Fascia Frame
- (2) Reading Lights with Individual Controls
- (2) Bed Side Power Outlets

APPLIANCES

- Stainless Steel Residential Refrigerator with 2000W Inverter
- 3-Burner, High Output Range with 22" Oven and Flush Mount Solid Surface Range Cover
- Range Cover Storage Compartment
- 30" Convection Microwave
- Dyson DC35 Cordless Vacuum
- 42K BTU LP Furnace
- Wired and Framed for Second and Third A/C
- 15K Ducted Dometic Quiet Cool A/C System
- Fireplace
- 12 Gal. Gas/Electric DSI Water Heater
- "Shurflo" On-demand High Output Water Pump (3 g/min at 55 psi)
- Dual 30 lb. Propane Bottles with Auto Switch Over
- LP Leak Detector
- Carbon Monoxide Detector

ELECTRONICS

- 58" LED TV (Main living area 3456RL, 3825FL, 3850RL, 3875FB, 3950TZ)
- 32" LED HDTV (Bedroom)
- Furion Theater System with Bluetooth, HDMI, DVD, AM/FM, Weather Band
- Digital TV Antenna with Signal Booster
- "My RV" Control Center - Smart Phone Compatible
- Cable TV Hook-ups (Main living, bedroom)
- Cable TV Hook-up (Exterior garage bulkhead)

- Satellite Prep (Roof mount)
- Exterior Flip-down Speakers in Pass-thru Storage

EXTERIOR

- High-gloss Colored Gel Coat Exterior (Premium quality and thickness)
- Front Cap: Molded High-gloss Gel Coat Fiberglass with Extended Turning Radius (Chamfered Front)
- Rear Cap: Molded High-gloss Gel Coat Fiberglass
- Laminated Front Bulkhead with High Gloss Gel Coat Fiberglass
- Back-up Monitor Camera Prep
- 32" X 76" Entry and Screen Door with High Gloss Gel Coat Fiberglass
- 45° Angled Skirting
- Slam Latch 1.5" Thick Insulated Doors with High Gloss Gel Coat Fiberglass
- Slide End Walls: Laminated with High Gloss Gel Coat Fiberglass
- Automotive Hehr Frameless Windows
- Hydraulic Slide Room Power
- Individual Slide Room Selector Switches
- Roof Ladder
- Dual Aluminum Wrapped Electric Power Awnings with LED Light Strip (N/A 3950TZ)
- Entry Assist Handle (XL - folding)
- 1.5" Aluminum Belt Rail with Caps (No exposed screws)
- Roto-cast Spun Seamless Water/Waste Tanks
- Enclosed and Heated Underbelly (Forced air heat)
- Thermostatically Controlled Tank Heat Pads (12 Volt Electric) (Dual heating sources)
- Dual Roof Vents
- LED Tail Lights And Rear Running Lights
- LP Quick Disconnect

SLIDE ROOM SEAL/GASKET SYSTEM

- Aluminum "H" Frame Slide Room Perimeter
- Dual Neoprene Squeegee Seals
- Exterior and Interior "D" Seals
- Exterior "H" Seal

EXTERIOR LIGHTING

- LED Docking Lights (4 - mounted into front cap)
- Rear Cap Lighting: White Reverse and Red Running/Brake Lights
- Security Lights (2)
- Amber Patio Light
- Entry Door Auto Threshold Light
- LED Awning Lights

UTILITY DOCKING COMPARTMENT

- Light (12 Volt)
- Outside Shower (Hot and cold)
- Black Tank Flush System
- Fresh Water Heater Bypass Valve
- Full Coach Water Filtration System
- Winterizing Bypass System
- Protected/Insulated Pull Waste Valves
- Waste Hose Storage Tube

CHASSIS/FOUNDATION

- I-beam "Z" Frame Powder Coated Chassis
- Chamfered Frame Technology
- 12" I-beam Frames (10" I-beam frame 3250RL)
- Dual Axles (7K with 12" beams) or (6K with 10" beams)
- Dexter E-Z Lube Bearing Lubrication System and Nev-R-Adjust Brakes
- MOR/ryde 3000 Suspension System
- MOR/ryde 18K Extended Pin Box
- (8) Lug Hubs
- Aluminum Rims 16"
- Goodyear® Premium E-rated Tires
- Spare Tire (Inside storage mounted)
- Hydraulic Front Jacks
- 8" Radius Front Jack Pads
- Electric Rear Stabilizing Jacks
- MOR/ryde Step Above Quad Aluminum Entry Steps
- Pinless Front Jack Legs
- Flush Floor Slide Design with Steel Ramp and Glide Bar (Main slide rooms)
- Hydraulic Slide System with 2" Steel Rams
- Hydraulic Pump Station with Manual Override

CONSTRUCTION

- Wide Body Construction
- Sidewalls: 2" Welded Aluminum Framed Vacuum Bonded Laminated Walls
- Roof: 5" Double Radiused Aluminum Trusses 16" on Centers
- Roof: Alpha Super Flex II TPO Roof Material
- Front Wall: Welded Aluminum Frame
- Rear Wall: Welded Aluminum Frame
- Floor: 3" Vacuum Bond Laminated with Welded Aluminum Trusses
- Bath/Bed Deck: Welded Aluminum Frame, Laminated
- Slide End Walls: 2" Welded Aluminum Frame, Laminated
- Slide Roof: 2" Welded Aluminum Frame, Laminated
- Slide Floor: 1" Wood Flooring
- No Expansion Gaps

INSULATION

- Sidewalls: High Density Block Foam Insulation (R-9)
- Roof: Fiberglass Batten Insulation and Radiant Foil Insulation (R-38)
- Main Floor: High Density Block Foam Insulation and Radiant Foil Insulation (R-38)
- Sub floor: Honey Combed Polyurethane with Aluminum Radiant Foil Insulation and Direct Forced Air Heat
- Front Cap: Fiberglass Insulation and Radiant Foil Insulation (R-38)
- Rear Cap: Fiberglass Insulation and Radiant Foil Insulation (R-38)

ELECTRICAL SYSTEMS

- "My RV" Control Center - Smart Phone Compatible
- 70 AMP Converter (Progressive Dynamics)
- 50 AMP Service
- Marine Grade Detachable 50 AMP Power Cord
- 12 Volt Battery Disconnect
- Battery Prep Box (2)
- Energy Management System (Second and third AC prep)
- Roof-mounted Solar Prep

OPTIONS

INTERIOR

- Serta Bellagio Deluxe King Sized Mattress
- Queen Bed (IPO King)
- Extra Dinette Chair
- (2) Recliners IPO Theater Seats
- Electric Theater Seats (N/A 3825FL, 3950TZ)
- Stainless Steel Appliance Package (Includes convection microwave)
- 18 Cu. Ft. 4-Door Gas/Electric Refrigerator
- Dishwasher
- 32" Galley TV (3825FL, 3950TZ)
- Stackable Washer/Dryer
- Fantastic Fan with Rain Sensor - Bedroom (N/A with second AC)

EXTERIOR

- Full-body Paint Package
- 3, 4 or 5) Slide-out Awnings
- Low Profile 13,500 BTU Quiet Cool Ducted AC in Bedroom (Standard 3825FL, 3950TZ)
- Third Low Profile 13,500 BTU Quiet Cool Ducted AC in Living Area
- Heat Pump for 15,000 BTU AC
- Dual Pane Frameless Windows with Safety Glass
- Generator Prep
- 5.5 LP Generator (Includes prep)
- "Level Up" 6-Point One Touch Automatic Hydraulic Leveling System
- Outside Ice Maker
- Bike Hitch
- Exterior Entertainment Center with 32" LED TV
- Premium G-rated Tires
- Dexter® Axle 7,000 lb. Hydraulic Disc Brakes
- 200 Watt Roof Mount Solar Panel
- Back-up Monitor Camera



Cardinal's radiused roof provides more interior headroom.



This one-piece mega shower has a built-in seat, textured glass door and skylight. The Kensington Walnut hardwood vanity features a solid surface countertop with an integrated porcelain sink.



A bedroom dresser with overhead cabinets and a 32" LED TV is standard on most models.



Tuck magazines and games under this handy tabletop. Expand with dual leaves and sliding base.



Store valuables with cleverly concealed underseat storage.



Contemporary glass tile backsplash is easy to clean.



Gooseneck faucet stainless with steel mega bowl sink



Slam-latch baggage doors



MOR/ryde Step Above quad entry steps



Access roof-mounted solar prep, "My RV" smart phone compatible system, and Energy management controls from one convenient location.



42" or 58" LED TVs are standard in living areas; 32" LED TVs are a bedroom standard (Most models).



Tow smoothly with MOR/ryde CRE/3000 compression rubber equalizer system.



Optional drawer dishwasher



Cardinal has durable gel coat, vacuum bonded, laminated fiberglass sidewalls, end walls and roof on all slide outs.



Premium Goodyear® E-rated tires are standard on all models with 8-lug, easy lube axles and aluminum alloy wheels. (G-rated option available)



Frameless deep tinted windows crank open for ventilation and easy maintenance. (Dual pane option available.)



Easy access pass-thru storage houses a full size spare tire. (Underneath on competition)

Cardinal
BY FOREST RIVER



WIDE BODY CONSTRUCTION

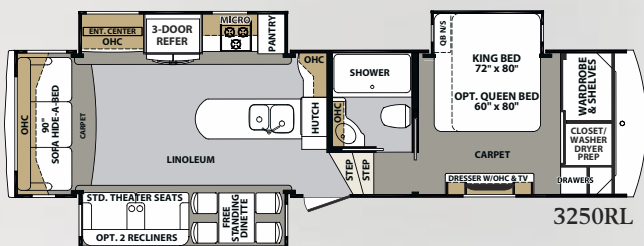
1. Deluxe Graphics Package
2. One-Piece SuperFlex II™ Roof Thermoplastic Polyolefin (TPO)
3. Two Attic Vents (Front and rear)
4. Block Foam Insulation
5. Decorative Wall Board
6. 3/8" Roof Decking (screwed)
7. Fiberglass Insulation
8. Aluminum Radiant Foil Insulation
9. 5" Double Radiused Aluminum Trusses on 16" Centers
10. MOR/ryde Hitch
11. Chamfered Frame Extends Turning Radius
12. Welded Tubular Aluminum Studs (2" wall)
13. Extra-Wide Hydraulic Front Jacks with 8" Radius Foot Pad
14. Forced Air Heated and Enclosed Underbelly (Includes 12V heating pads)
15. Fully Enclosed Underbelly
16. 12" Powder Coated Steel I-Beam with Z-Frame (10" on 3250RL)
17. 3" Laminated Aluminum Floor
18. Black Polymax Moisture Barrier
19. Plush Carpet
20. Soft Foam Padding
21. Premium Goodyear® E-rated Tires
22. MOR/ryde 3000 Suspension
23. MOR/ryde Step Above Quad Entry Step
24. 32" x 76" Entry Door with Light
25. Gel Coat Fiberglass Exterior (Sidewalls, entry doors, compartment doors, end walls of slide-outs and front and rear caps)
26. Dark tinted frameless windows

From homestyle to theater style, Cardinal offers a broad range of residential style floor plans for luxury living.

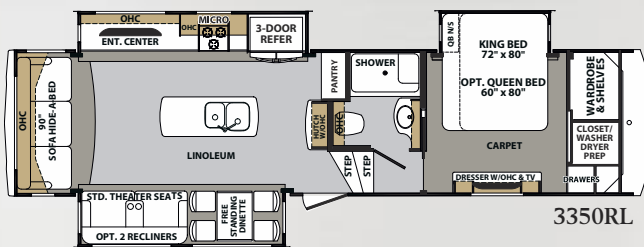


The Nautilus controls:

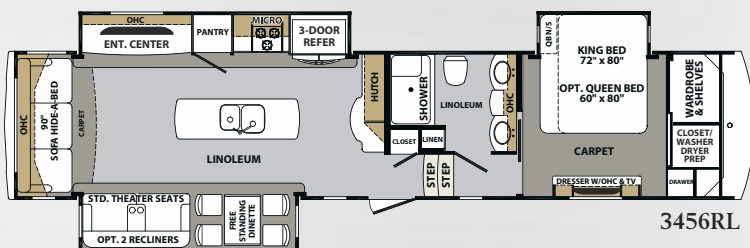
- One city water inlet – five functions:
- “Powerfill” fresh water tank
- Siphon fill/sanitize fresh water tank
- Easily winterize water lines and fixtures
- Dry camp from fresh water tank
- Pressurized city water supply
- Built-in tank flushing system
- LED pump switch for one person winterizing
- Hot/cold faucet
- Multiple coax connections – cable, satellite, and auxiliary



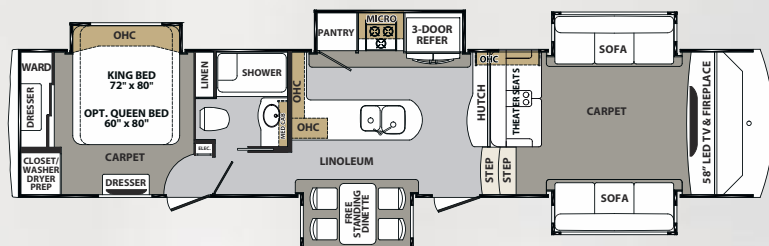
3250RL



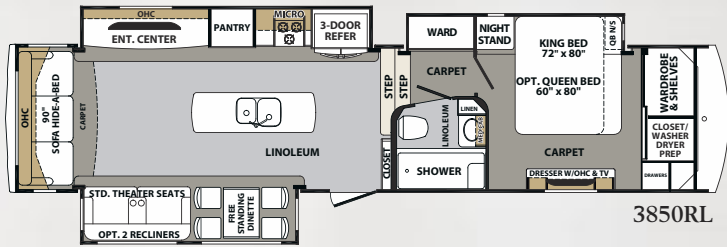
3350RL



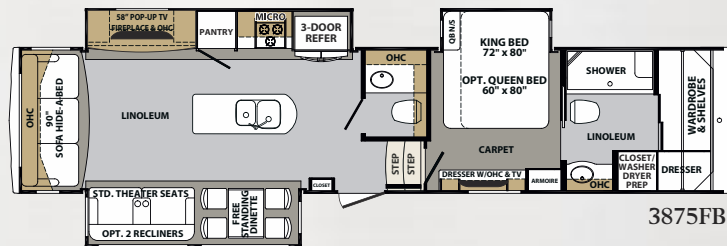
3456RL



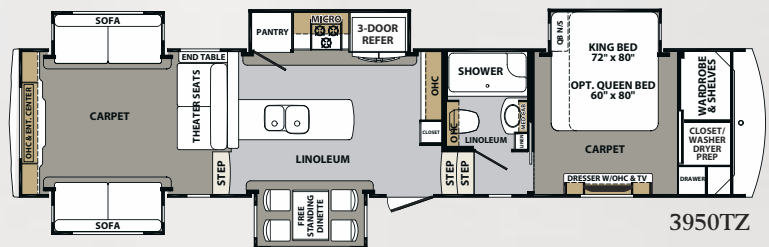
3825FL



3850RL



3875FB



3950TZ

	WIDE BODY	3250RL	3350RL	3456RL	3825FL	3850RL	3875FB	3950TZ
Length (Center of Pin to Rear of Cap)		34' - 11"	35' - 7"	40' - 8"	41' - 7"	39' - 6"	40' - 6"	41' - 1"
Shipping Weight		12142	12497	13857	13978	13515	13975	14387
UVW		12201	12556	13916	14037	13574	14034	14446
Hitch Weight		2252	2280	2429	2452	2575	2490	2755
GAWR		12000	12000	13680	13680	13680	13680	13680
GVWR		14252	14280	16109	16132	16255	16170	16435
Cargo Carrying Capacity (CCC)		2051	1724	2193	2095	2681	2136	1989
Exterior Height		13' 6"	13' 6"	13' 6"	13' 6"	13' 6"	13' 6"	13' 6"
Exterior Width		100"	100"	100"	100"	100"	100"	100"
Interior Height (Bedroom)		81"	81"	81"	105"	81"	81"	81"
Interior Height (Living area)		105"	105"	105"	81"	105"	105"	88"
Tire Size: ST235/80R16E		●	●	●	●	●	●	●
Brake Size		12"	12"	12"	12"	12"	12"	12"
Fresh Water		64 gal.	64 gal.	64 gal.	64 gal.	64 gal.	64 gal.	64 gal.
Waste Water		120 gal.	110 gal.	120 gal.	120 gal.	120 gal.	140 gal.	120 gal.
Water Heater		12 gal.	12 gal.	12 gal.	12 gal.	12 gal.	12 gal.	12 gal.
Furnace		42000 BTU	42000 BTU	42000 BTU	42000 BTU	42000 BTU	42000 BTU	42000 BTU
Patio Awning		14'	14'	19'	6' - 6" & 14'	19'	18'	16'
Exterior Storage (Cu. ft.)		113	113	138	107	150	150	232

CALCULATED R-VALUES

- Sidewalls: High Density Block Foam Insulation (R-9)
- Roof: Fiberglass Batten Insulation and Radiant Foil Insulation (R-38)
- Main Floor: High Density Block Foam Insulation and Radiant Foil Insulation (R-38)
- Sub floor: Honey Combed Polyurethane with Aluminum Radiant Foil Insulation and Direct Forced Air Heat
- Front Cap: Fiberglass Insulation and Radiant Foil Insulation (R-38)
- Rear Cap: Fiberglass Insulation and Radiant Foil Insulation (R-38)

GVWR (Gross Vehicle Weight Rating) - is the maximum permissible weight of the unit when fully loaded. It includes all weights, inclusive of all fluids, cargo, optional equipment and accessories. For safety and product performance do NOT exceed the GVWR.

GAWR (Gross Axle Weight Rating) - is the maximum permissible weight, including cargo, fluids, optional equipment and accessories that can be safely supported by a combination of all axles.

UVW (Unloaded Vehicle Weight) - is the typical weight of the unit as manufactured at the factory. It includes all weight at the unit's axle(s) and tongue or pin and LP Gas. The UVW does not include cargo, fresh potable water, additional optional equipment or dealer installed accessories.

CCC (Cargo Carrying Capacity)** - is the amount of weight available for fresh potable water, cargo, additional optional equipment and accessories. CCC is equal to GVWR minus UVW. Available CCC should accommodate fresh potable water (8.3 lbs. per gallon). Before filling the fresh water tank, empty the black and gray tanks to provide for more cargo capacity.

*Estimated Average based on standard build optional equipment.

**Estimated average based on standard build optional equipment.

Each Forest River RV is weighed at the manufacturing facility prior to shipping. A label identifying the unloaded vehicle weight of the actual unit and the cargo carrying capacity is applied to every Forest River RV prior to leaving our facilities.

The load capacity of your unit is designated by weight, not by volume, so you cannot necessarily use all available space when loading your unit.