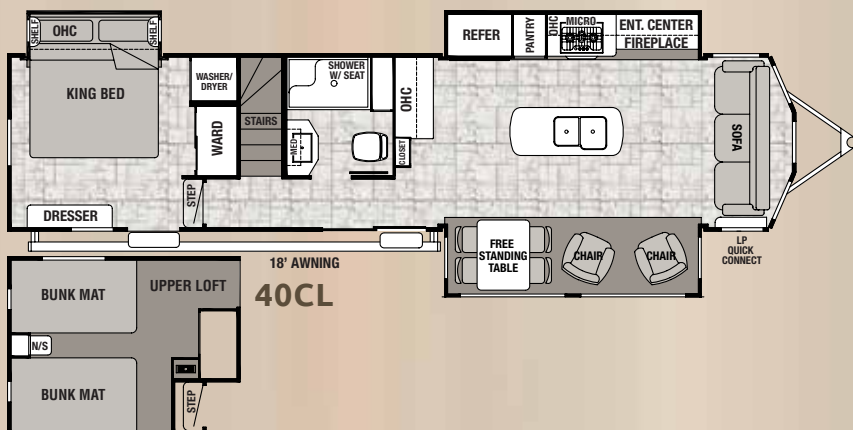
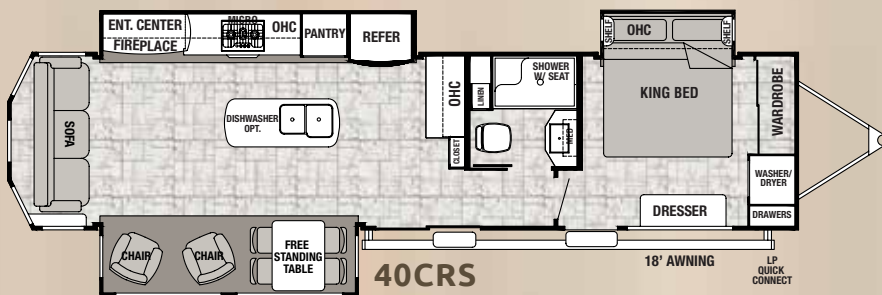
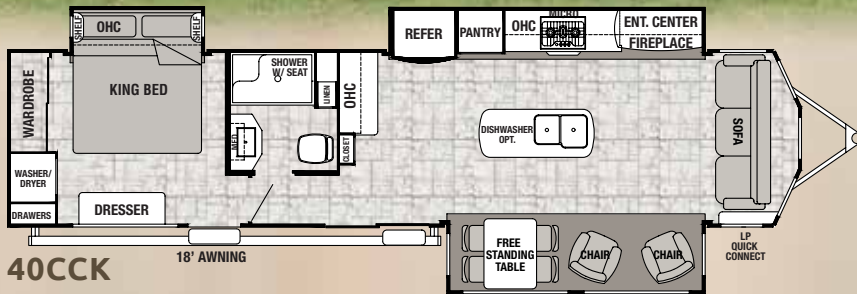


# Cottage

BY CEDAR CREEK



## WIDE BODY TRAVEL TRAILERS



**40CCK**

Your Cedar Creek Hathaway Dealer

Budget RV Outlet of Buffalo  
4817 Lake Ave.  
Blasdell, NY 14219  
716-685-3546  
[www.budgetrvoutlet.com](http://www.budgetrvoutlet.com)

# CEDAR CREEK COTTAGE WIDE BODY TRAVEL TRAILERS

## COTTAGE EDITION PACKAGE

- Cedar Creek's famous all aluminum superstructure on 16" center or less
  - "True" pearl gelcoat exterior – truly the best of the best in gelcoat exteriors. Stronger, thicker and keeps its high gloss longer than our competitors less expensive gel "coated" exteriors
  - High sheen, European Beech cabinet doors with hidden hinges
  - Solid surface kitchen countertops with huge, under-mounted stainless steel sinks
  - Residential, full panel backsplash
  - Furion Chef's Collection gas cooktop and oven
  - Self-closing drawer guides with wooden silverware organizer
  - Jensen Home Theater System includes: 50" LED TV, CD/DVD Player, AM/FM Stereo, and J-Control App for your smart devices. Apple licensing is also included.
  - Residential pantry with full extension drawers
  - USB ports in kitchen and bedroom
  - 12V sound bar with 2 mid-tone speakers, 2 tweeters, 2 woofers and 2 outside speakers
  - Shaw® RX2 stain and soil resistant carpeting in the dining room slide
  - Congoleum® Carefree™ floor covering throughout, except living room slide
  - LED Edison lighting fixtures with 4" LED ceiling lights
  - 36" Fireplace with remote control and thermostat
  - King Denver® mattress with full size headboard and luxury bedding
  - 88" Franklin® Hide-a-bed sofa
  - La-Z-Boy® recliners
  - Insignia™ 18 cu. ft. electric refrigerator with Geek Squad protection.
  - Winegard® HD ready pre-wire
  - Day shade and blackout roller shades
  - 20 Gallon electric water heater
  - Detachable hitch
- ### Exterior Features
- 102" Wide body
  - 50 Amp service
  - ABS Ribbed underbelly panels with no screws into the I-Beam frame
  - Decorative front cap with molded picket fence
  - Dexter® Nev-R-Adjust™ brakes are always properly adjusted for improved stopping power in half the distance

- Dexter® Heavy duty axles with heavy duty link plates and shackles
- 16" 6-Lug, ST, "E" tires on 6,000 lb. Dexter® Axles
- Electric awning with LED night lighting strip
- Enclosed and triple layered insulated underbelly (R-45)
- Hitch light
- Large surface 12V heating pads on all holding and fresh water tanks
- Lighted entry step
- Porch light
- Selector switches for slide rooms
- Clamp ring windows with butyl rubber seals
- Ducted 15,000 Duo-Therm "HP" (high performance) air conditioner with larger compressor for 30% more airflow
- Braced and wired for a second air conditioner
- 5/8" Tongue and groove plywood floor
- 3M Silaprene® bonded sidewalls
- Satellite and cable hook-ups into living room and bedroom
- Thermal pane patio door

### Living Room Features

- Ceiling fan

### Kitchen Features

- Create-A-Breeze Fantastic Fan with thermostat and rain sensor in kitchen
- Stainless steel 30" over-the-range microwave with built-in vent
- Crown molding complementing all overhead cabinets in kitchen area
- Free-standing table with hidden table leaf extension and four (4) chairs

### Bedroom Features

- (9) 8" Deep, drawers in main bedroom area
- Bedroom roof vent
- 2" x 2" Finished bed base with gas lifts
- Side ventilation windows
- Ceiling mounted, individually switched, overhead reading lights in slide
- Solid wood dresser top (No Formica)

### Bathroom Features

- 18" Tall porcelain toilet with circular flow flush system
- One-piece, 48" x 30" fiberglass shower

- 10-Blade bathroom Breeze Power Bath Vent with convenient wall switch
- Bath towel rack and toilet paper holder
- Large, double stack bathroom mirror medicine cabinet with overhead makeup lights
- Linen cabinet

### Miscellaneous Features

- 12V Battery disconnect
- LP gas/carbon monoxide detector
- Dometic® Climate Control with dual zone heating and cooling
- Smoke detector
- Cedar Creek switch control center
- Solid State 55 amp power converter
- 40,000 BTU furnace
- Washer/dryer prep
- One-year Coach-Net® Roadside Assistance
- FREE membership to the Forest River Owner's Group (FROG)

## OPTIONS

- 30" Stainless steel convection oven/microwave
- 20 Cu. ft. electric double drawer refrigerator with ice maker
- Fisher and Paykel stainless steel dishwasher
- "Champagne Dreamer" 10" luxury queen and king mattress
- Central vacuum system
- Power theater seating IPO recliners
- Shaw® Carpet in Living area with rebond pad
- Shaw® Carpet in Bedroom Area with rebond pad
- New Chottoman with hidden storage
- 32" LED TV in bedroom
- Second ducted 15,000 high performance air conditioner
- Awning toppers with fabric weather shield
- Heat pump on main air conditioner
- Splendide® Stackable washer and dryer
- Dual pane windows
- (3) Additional sets of stabilizer jacks (4 sets total)
- 12' Electric slide room awning
- Cadet self-regulating bedroom wall heater (N/A 40CL)
- Ceiling fan in bedroom (N/A 40CL)

MODEL	40CCK	40CRS	40CL
GVWR	13835 lb.	13565 lb.	13961 lb.
Hitch Weight	1835 lb.	1565 lb.	1961 lb.
UVW	11304 lb.	11499 lb.	12019 lb.
CCC	2531 lb.	2066 lb.	1655 lb.
Exterior Length	40' 4"	41' 6"	40' 6"
Exterior Height	12' 10"	12' 10"	12' 10"
Exterior Width	102"	102"	102"
Fresh Water	76 gal.	76 gal.	76 gal.
Gray Water	120 gal.	120 gal.	120 gal.
Black Water	40 gal.	40 gal.	40 gal.
Awning Size	18 ft.	18 ft.	21 ft.

All Weights listed at left are base weights. Weight capacities +/- 5%. NOTE: Model number of any particular unit does not necessarily reflect the overall length of the unit itself.

**GVWR (Gross Vehicle Weight Rating)** - is the maximum permissible weight of the unit when fully loaded. It includes all weights, inclusive of all fluids, cargo, optional equipment and accessories. For safety and product performance do NOT exceed the GVWR.

**GAWR (Gross Axle Weight Rating)** - is the maximum permissible weight, including cargo, fluids, optional equipment and accessories that can be safely supported by a combination of all axles.

**UVW (Unloaded Vehicle Weight)\*** - is the typical weight of the unit as manufactured at the factory. It includes all weight at the unit's axle(s) and tongue or pin and LP Gas. The UVW does not include cargo, fresh potable water, additional optional equipment or dealer installed accessories.

\*Estimated Average based on standard build optional equipment.

**CCC (Cargo Carrying Capacity)\*\*** - is the amount of weight available for fresh potable water, cargo, additional optional equipment and accessories. CCC is equal to GVWR minus UVW. Available CCC should accommodate fresh potable water (8.3 lbs per gallon). Before filling the fresh water tank, empty the black and gray tanks to provide for more cargo capacity.

\*\*Estimated average based on standard build optional equipment

Each Forest River RV is weighed at the manufacturing facility prior to shipping. A label identifying the unloaded vehicle weight of the actual unit and the cargo carrying capacity is applied to every Forest River RV prior to leaving our facilities. The load capacity of your unit is designated by weight, not by volume, so you cannot necessarily use all available space when loading your unit.

*Cottage*

*The Smart Choice for the Experienced RV'er*

FOREST RIVER INC. CEDAR CREEK DIVISION

501 Hawpatch Road ■ Topeka, IN 46571

Phone: 260-593-2404

Parts & Service Phone: 260-593-4000

On The Web at: [www.forestriverinc.com/cottage](http://www.forestriverinc.com/cottage)



Learn More  
Scan this barcode using  
a QR Reader on your  
smart phone to learn  
more about Forest River.



A Berkshire Hathaway company.

All information contained in this brochure is believed to be accurate at the time of publication. However, during the model year, it may be necessary to make revisions and Forest River, Inc., reserves the right to make all such changes without notice, including prices, colors, materials, equipment and specifications as well as the addition of new models and the discontinuance of models shown in this brochure. Therefore, please consult with your Forest River dealer and confirm the existence of any materials, design or specifications that are material to your purchase decision. ©2018 Cedar Creek. A division of Forest River, Inc., a Berkshire Hathaway Company. 9/18 Cottage

 Find us on  
**Facebook**