

# 08 ADVENTURER





 SMARTSPACE  
WEB

### THE CLEAR CHOICE FOR COMFORT.

Step inside and you'll know right away why the Winnebago Adventurer® is the perfect coach for you. It surrounds you with premium amenities and features that enhance your motor homing experience and take you on countless adventures. A spacious interior welcomes you with a 7'2.5" ceiling and SmartSpace™ design elements that make the most of the available space.

Stylish features like beautiful cabinetry, Corian® solid-surface countertops and available UltraLeather™ furniture make the Adventurer a coach you will call home for years to come. Get smart and get comfortable in a 2008 Winnebago Adventurer.



## EAT WELL

Start or end every adventure with a hearty meal. The galley offers a full complement of appliances to prepare any feast, including a microwave/convection oven with a range fan and a three-burner range top with a high-output burner to help speed cooking time. Choose the available oven for added baking flexibility or go with the standard cabinet drawers for extra storage.

A large pantry comes standard and you can upgrade to a large four-door refrigerator/freezer with icemaker for even more cold storage. Enjoy residential comforts with standard premium amenities such as Corian solid-surface countertops, a decorative stove backsplash and indirect ambient lighting. The stainless steel sink is sized to accommodate large pots and pans, and features a Corian sink cover for added countertop space. There's even a separate faucet directly from the water purification system for filtered, crystal-clear water on demand.

Depending on the model you select, you'll have the choice of a freestanding table with drop leaves or the BenchMark® full comfort dinette.

**WEB** Select a Key Feature

The **WEB** icon designates a Winnebago Industries Key Feature. For further in-depth information and photos, use the Drop-down Menu or click on the 'Key Features' page at [winnebagoind.com](http://winnebagoind.com).



38T Cocoa Pecan with Sierra Maple

**WEB titanium TOUCH™** The refrigerator features Titanium Touch™ stainless finish doors. This Winnebago Industries® exclusive provides the look of stainless steel, resists fingerprints and is warmer to the touch than traditional stainless steel. As an added benefit, you can even use your favorite kitchen magnets.



**FULL-EXTENSION DRAWER SLIDES** Drawers are perfectly sized to maximize storage, hold tight with positive latches and open fully for easy access to stored items.



### **WEB BenchMark**

This full-comfort dinette features contemporary full-wrapped styling and includes innerspring cushions that flip-up to access large, easy-to-use storage compartments. BenchMark even converts easily into a comfortable bed (NA 38J) and includes a child safety seat tether.





#### RELAXING ENVIRONMENT

Relax like you mean it in the 2008 Adventurer. The entertainment center boasts a large flat-panel TV, Home Theater Sound System, DVD player and an available King-Dome® RV digital in-motion (NA 37B) or automatic satellite dish. An available 600-watt inverter powers the entertainment center when a shoreline or generator source is unavailable.

The Adventurer has everything you need to feel at home, including plush furniture with available UltraLeather, an available Euro Chair and even an available electric fireplace in the 38T. The Home Comfort Plus package comes standard with an auxiliary automotive heater, roof vents with power lift and a remote wall switch, and a heat pump that warms your coach without using the LP furnace. You can also perfectly adjust the light and privacy levels with day/night pleated shades.

**WEB** **REST EASY**® This multi-position lounge glides from a couch to a recliner with ottoman to a comfortable bed at the touch of a button.



#### HOOP-BASE CHAIR

This hoop-base lounge chair, shown here with available UltraLeather, rocks, reclines and can be moved to your favorite spot when your Adventurer is parked.



#### ENTERTAINMENT

Relax in comfort while you watch your favorite programs from the available Euro Chair (38T shown).



## A BETTER BEDROOM

The bedroom offers so much more than a great night's sleep with a 20" TV (24" TV on 37B) that readily connects to the available satellite system and a stereo system with AM/FM radio, CD/DVD player and an alarm clock. The bedroom stereo also offers an auxiliary input for your MP3 player.

The walk-around queen-size bed flips up to reveal a large storage area that complements the wardrobe and storage cabinets.

Of course, you'll sleep soundly in the available Sleep Number® bed. It's even available in king-size on the 35L. Wall-mounted lamps and under-cabinet lighting provide the perfect ambiance for reading a good book before retiring. Wake up with a refreshing shower that maintains a constant temperature even if the water pressure fluctuates, thanks to the Moen Posi-Temp® valve.



38T Cocoa Pecan with Sierra Maple

**BEDROOM** Windows are positioned to maximize cross-coach ventilation when you want a cool night breeze.



**SINK** An in-room sink and mirror come in handy when it's time to get ready for bed in the 38T.

## THE SLEEP NUMBER

20 25 30 35 40 45 50 55 60 65 70 BED

select + comfort



## WEB SLEEP

**NUMBER BED®** The available Sleep Number bed by Select Comfort™ includes digital hand controls that let you quickly adjust the firmness of each side of the mattress to your Sleep Number — Your Key to a Perfect Night's Sleep™



## SHOWER

The shower offers a flexible showerhead, available fold-down seat and an elegant faux-Ivory Marble shower surround.



## WASHER/DRYER

Do laundry in the comfort of your motor home when you add this washer/dryer (NA 33V and 35L w/king bed).



## SMOOTH RIDE

Driving a full-size Class A motor home has never been easier, thanks to a cockpit that conveniently places controls and features such as the standard rearview monitor and map light(s) within easy reach. The available sideview cameras activate with the turn signal and display on the dash-mounted monitor for added peace of mind when turning and maneuvering.

UltraLeather cab seats and a six-way power driver's seat come standard for a more comfortable ride. Power sunvisors adjust at the touch of a button.

The RV Radio® includes AM/FM stereo, CD player, weather band and an auxiliary input for your iPod/MP3 player. For added versatility, the RV Radio comes with two remotes – one handheld and one on the steering wheel. Upgrade your RV Radio with the available Sirius® Satellite Radio package, which comes with a free six-month subscription. Sirius brings you 130 channels of crystal-clear programming.



**DASH** The dash is designed to position controls at your fingertips. The RV Radio with the Sirius Satellite package is iPod ready so you can listen to and control your iPod while you drive.



**CAB SEATS** UltraLeather cab seats with 6-way power adjustment keep you comfortable on extended trips.



**DASH WORKSTATION** This sturdy surface is great for laptops and conceals a convenient storage compartment.



**WEB TRUELEVEL** Eliminate tank-level guesswork with our exclusive TrueLevel™ holding tank monitoring system. It incorporates detector cells that sense liquid levels from outside the tank. No probes means no more corrosion, just accurate readings time after time.



**WEB**

### ONE PLACE™

This complete systems center places frequently used switches, gauges and controls in one convenient location.



**WEB POWERLINE** This energy management system monitors electrical usage and automatically cycles postponable appliances on and off to prevent campground circuit overloads.



**WEB TRUEAIR** This residential central air conditioning system cools 40 percent faster and runs 10 percent quieter than roof airs. The key is a Coleman®-Mach® cooling unit located in the basement for a lower vehicle profile, easier service and more efficient operation.



## GEARED FOR GEAR

The Adventurer is an incredibly user-friendly motor home thanks to its large cargo capacity and thoughtful features that maximize storage and minimize setup at the campsite. There is plenty of basement storage for all of your gear and it's always easy to access using the StoreMore® slideout system. StoreMore allows storage bays to extend with the slideroom so you don't have to crawl on your hands and knees to get what you need.

Plumbing hookups are made easy with color-coded labels in an organized service center. In addition to sewage connections, you'll find a wash station for quick clean-ups. There is also a second switch for the leveling jacks for added convenience. Other features include a 5,000-lb. hitch<sup>6</sup>, breakaway mirrors and a large awning for instant shade.



**WEB STOREMORE** Accessing your items in the basement storage compartments is never a hassle, thanks to the StoreMore slideout system that allows storage bays to extend with the slideroom.



### EXTERIOR ENTERTAINMENT CENTER

Bring your entertainment outdoors with the exterior entertainment center, which includes AM/FM radio with remote, CD player, speakers, 12-volt powerpoint and 110-volt outlet.



**QUICKPORT®** The QuickPort hatch in the service center allows hookups to stay connected even when the bay door is closed.



**QUICKCONNECT®** The QuickConnect coupling valve provides quick, clean and easy connection to the dumpsite.



**SERVICE CENTER** All your plumbing connections are found in this convenient service center. A winterization system is standard making storage prep a snap.

**WEB 3 position controls** FOR HYDRAULIC JACKS Raise and lower the hydraulic jacks from any of three convenient locations. Do the job from the driver's seat or step outside and use the controls at the entrance door or service center to watch the jacks as you lower them. No hassle. No guesswork. Just a level coach at your convenience.



# 08 ADVENTURER FLOORPLANS



Carpet

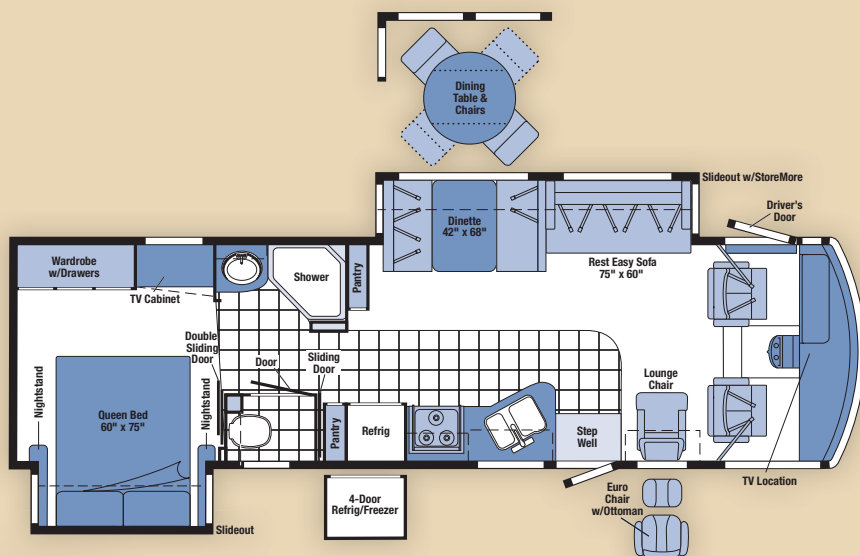


Vinyl Tile  
Floorcovering

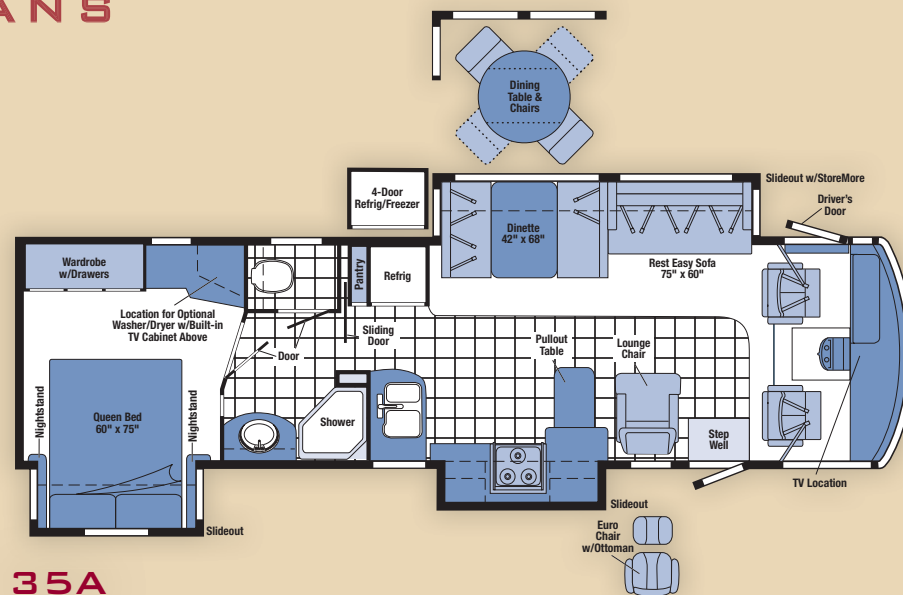


Seat  
Belts

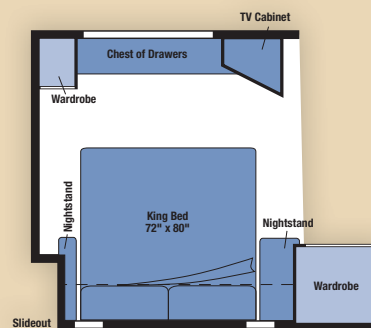
Note: Dimensions shown are for sleeping space only and may vary due to styling differences. Dashed lines denote overhead storage areas.



33V

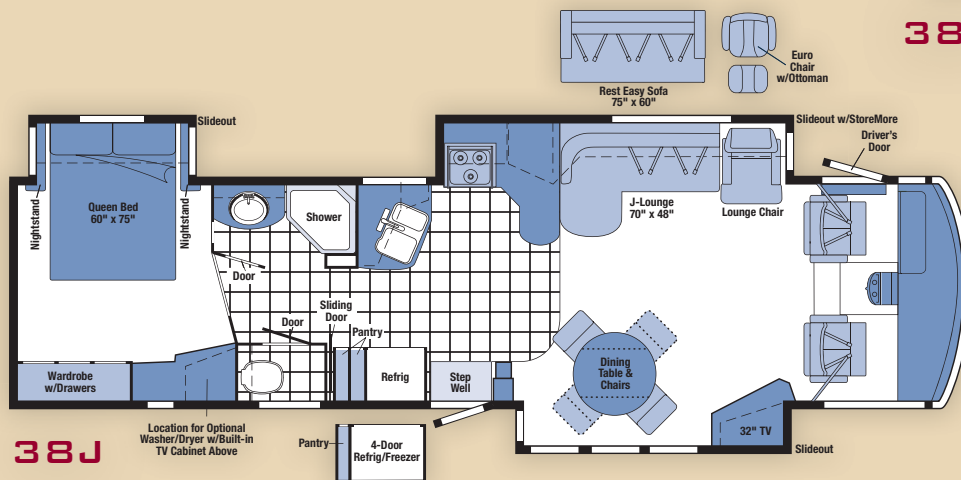
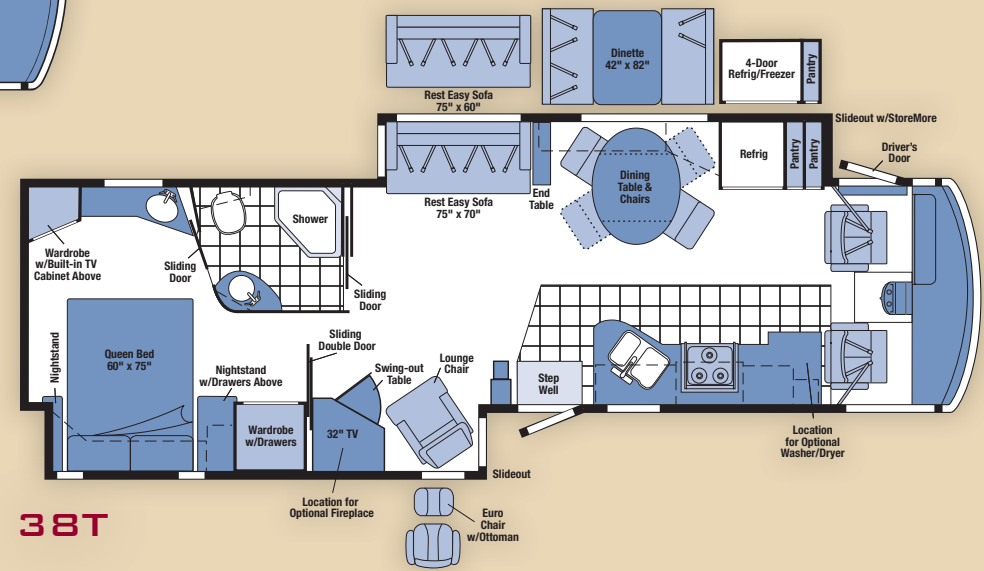
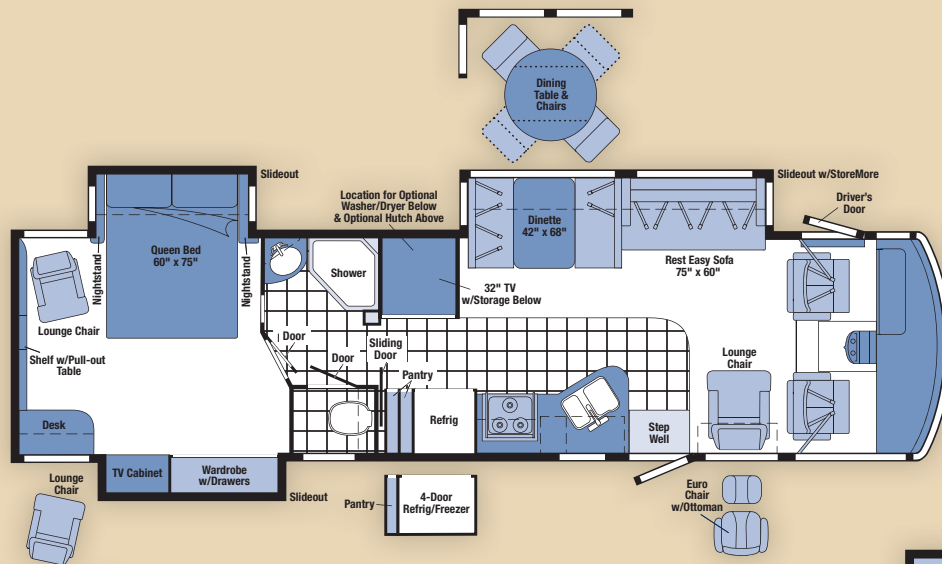


35A



35L







# 08 ADVENTURER SPECIFICATIONS

WEIGHTS & MEASURES	33V	35A	35L	37B	38J	38T
<b>Length</b>	33'8"	35'11"	36'	37'11"	38'10"	38'11"
<b>Exterior Height<sup>1</sup></b>	12'2"	12'2"	12'2"	12'2"	12'2"	12'2"
<b>Exterior Width<sup>2</sup></b>	8'5.5"	8'5.5"	8'5.5"	8'5.5"	8'5.5"	8'5.5"
<b>Exterior Storage<sup>3</sup></b> (cu. ft.)	68.8	93.1	87.5	107.4	97.4	116.9
<b>Awning Length</b>	18'	20'	15'	19'	19'	13'
<b>Interior Height</b>	7'2.5"	7'2.5"	7'2.5"	7'2.5"	7'2.5"	7'2.5"
<b>Interior Width</b>	8'0.5"	8'0.5"	8'0.5"	8'0.5"	8'0.5"	8'0.5"
<b>Freshwater Capacity w/Heater<sup>4</sup></b> (gal.)	86	88	90	88	88	88
<b>Holding Tank Capacity - Black/Gray<sup>4</sup></b> (gal.)	55 / 43	50 / 75	65 / 49	50 / 58	51 / 53	53 / 70
<b>LP Capacity<sup>5</sup></b> (gal.)	28	28	28	28	28	28
<b>Fuel Capacity</b> (gal.)	75	75	75	75	75	75
<b>GCWR<sup>6</sup></b> (lbs.)	26,000 <b>A</b> / 26,000 <b>B</b>	26,000 <b>A</b> / 26,000 <b>B</b> / 30,000 <b>C</b>	26,000 <b>A</b> / 26,000 <b>B</b> / 30,000 <b>C</b>	30,000 <b>C</b>	30,000 <b>C</b>	30,000 <b>C</b>
<b>GVWR</b> (lbs.)	22,000 <b>A</b> / 22,000 <b>B</b>	22,000 <b>A</b> / 22,000 <b>B</b> / 24,000 <b>C</b>	22,000 <b>A</b> / 22,000 <b>B</b> / 24,000 <b>C</b>	24,000 <b>C</b>	24,000 <b>C</b>	24,000 <b>C</b>
<b>GAWR - Front</b> (lbs.)	7,500 <b>A</b> / 8,500 <b>B</b>	7,500 <b>A</b> / 8,500 <b>B</b> / 9,000 <b>C</b>	7,500 <b>A</b> / 8,500 <b>B</b> / 9,000 <b>C</b>	9,000 <b>C</b>	9,000 <b>C</b>	9,000 <b>C</b>
<b>GAWR - Rear</b> (lbs.)	14,500 <b>A</b> / 15,000 <b>B</b>	14,500 <b>A</b> / 15,000 <b>B</b> / 15,500 <b>C</b>	14,500 <b>A</b> / 15,000 <b>B</b> / 15,500 <b>C</b>	15,500 <b>C</b>	15,500 <b>C</b>	15,500 <b>C</b>
<b>Wheelbase</b>	208"	228"	228"	248"	248"	266"

AUTOMOTIVE/CHASSIS	33V	35A	35L	37B	38J	38T
<b>A Ford® Chassis</b> – 6.8L Super-Duty V10 SOHC Triton® engine, 362-hp, TorqShift™, 5-speed overdrive transmission, 130-amp. alternator, 4-wheel ABS, <b>Tires</b> 22.5" <b>Wheels</b> stylized aluminum	<b>S</b>	<b>S</b>	<b>S</b>			
<b>B Workhorse™ Chassis</b> – 8.1L Vortec V8, 340-hp, Allison® 1000 Series 6-speed electronic overdrive transmission, 145-amp. alternator, 4-wheel ABS, <b>Tires</b> 22.5" <b>Wheels</b> stylized aluminum	<b>O</b>	<b>O</b>	<b>O</b>			
<b>C Workhorse Chassis</b> – 8.1L Vortec V8, 340-hp, Allison 2100 Series 6-speed electronic overdrive transmission, 145-amp. alternator, 4-wheel ABS, <b>Tires</b> 22.5" <b>Wheels</b> stylized aluminum	<b>O</b>	<b>O</b>	<b>S</b>	<b>S</b>	<b>S</b>	
<b>Leveling Jacks</b> HWH® hydraulic w/3-position controls, <b>Trailer Hitch</b> ® 5,000-lb. drawbar/500 lbs. maximum vertical tongue weight & 7-pin wiring connector	<b>S</b>	<b>S</b>	<b>S</b>	<b>S</b>	<b>S</b>	<b>S</b>

CAB AREA & DRIVER CONVENIENCES	33V	35A	35L	37B	38J	38T
<b>Cab Seats (UltraLeather™)</b> multiposition armrests, headrest, manually adjustable lumbar support, multi-adjustable recline, <b>Cab Seat Pedestal</b> swivel/slide, manual (passenger), 6-way power assist (driver), <b>Cab Sound Control Package</b> , <b>Cigarette Lighter/12-Volt DC Powerpoint</b> , <b>Convenience Tray</b> , <b>Cruise Control</b> , <b>Door</b> driver, KeyOne™ System (common key w/ entrance door & exterior storage compartments), trim panel w/beverage holder, storage pocket, power mirror controls, <b>Courtesy Light</b> , <b>Curtain</b> front wraparound, <b>Defroster Fans (2)</b> auxiliary 2-speed w/instrument panel switch, <b>Map Lights</b> , <b>Monitor System</b> black/white rearview w/single camera & 1-way audio, <b>Sunvisors (2)</b> powered, switch, <b>Trim Panel</b> passenger side w/beverage holder, storage, switch appliqué, 12-volt DC powerpoint, <b>Steering Wheel</b> tilt w/power-assist, <b>Window</b> power (driver), full-slider w/screen, dual-glazed/thermo-insulated (passenger), <b>Windshield Wipers</b> intermittent, <b>Workstation</b> in-dash	<b>S</b>	<b>S</b>	<b>S</b>	<b>S</b>	<b>S</b>	<b>S</b>
<b>Video Camera System</b> 2 side-mounted cameras	<b>O</b>	<b>O</b>	<b>O</b>	<b>O</b>	<b>O</b>	<b>O</b>

ENTERTAINMENT	33V	35A	35L	37B	38J	38T
<b>C.B. Prep</b> 12-volt DC powerpoint, <b>DVD Cable Ready</b> bedroom, <b>Entertainment Center w/CD Player (Exterior)</b> DC receptacle, AC duplex receptacle, AM/FM radio, radio antenna, speakers (2), lockable compartment, removable table (NA on 38T), <b>Home Theater Sound System</b> amplifier, DVD, receiver, speakers (5), <b>RV Radio® (Cab)</b> AM/FM stereo/CD player w/weather band, iPod/MP3 input, remotes, roof-mounted flexible rubber antenna, <b>Radio Power Switch</b> main/auxiliary battery, <b>Satellite System Ready</b> , <b>Telephone</b> input & interior jacks, <b>TV Enhancement Package</b> antenna (amplified), interior jacks, exterior jack, coax wiring, cable input, <b>Video Selection System</b>	<b>S</b>	<b>S</b>	<b>S</b>	<b>S</b>	<b>S</b>	<b>S</b>
<b>Compact Multidisc Changer</b> , <b>Satellite Radio</b> Sirius® (includes 6-month subscription, iPod interface connector), <b>Satellite Dish Antenna</b> RV digital, elevation sensing unit, manual or power, <b>Satellite Dish Antenna</b> RV digital, in-motion, King-Dome®, <b>Stereo System (Rear)</b> AM/FM, CD/DVD player, alarm clock, front TV jack (plays MP3)	<b>O</b>	<b>O</b>	<b>O</b>	<b>O</b>	<b>O</b>	<b>O</b>
<b>TV 20"</b> flat-face, color, AC w/remote, bedroom	<b>S</b>	<b>S</b>	<b>S</b>		<b>S</b>	<b>S</b>
<b>TV 24"</b> flat-face, color, AC w/remote, bedroom				<b>S</b>		
<b>TV 27"</b> LCD, stereo, color, AC w/remote, (front overhead)	<b>S</b>	<b>S</b>	<b>S</b>			
<b>TV 32"</b> LCD, stereo, color, AC w/remote, entertainment center				<b>S</b>	<b>S</b>	<b>S</b>

INTERIOR	33V	35A	35L	37B	38J	38T
<b>Ceiling</b> vinyl, <b>Countertops</b> Corian® solid-surface, galley & bath, <b>Lights</b> ceiling, incandescent, bath, bedroom w/wall switches, <b>Light</b> decorative oval, <b>Lights</b> fluorescent, recessed, galley & lounge w/wall switches, <b>Lights</b> reading, <b>Mini Blinds</b> galley & bath, <b>Shades</b> day/night pleated, lounge, dinette & bedroom, <b>Windows</b> flush-mounted/dual-glazed/thermo-insulated	<b>S</b>	<b>S</b>	<b>S</b>	<b>S</b>	<b>S</b>	<b>S</b>
<b>Fireplace</b> electric						<b>O</b>

FURNITURE	33V	35A	35L	37B	38J	38T
<b>Dining Table &amp; Chairs</b> freestanding (2), folding (2)	<b>O</b>	<b>O</b>	<b>O</b>	<b>O</b>	<b>S</b>	<b>S</b>
<b>BenchMark® Full Comfort Dinette</b> access to storage below	<b>S</b>	<b>S</b>	<b>S</b>	<b>S</b>		<b>O</b>
<b>Lounge Chair (UltraLeather)</b> hoop-base, <b>Lounge Chair (UltraLeather)</b> Euro recliner w/ottoman, <b>Rest Easy® Multi-Position Lounge (Fabric or UltraLeather)</b> dual-control, <b>Rest Easy Multi-Position Lounge (UltraLeather)</b>	<b>O</b>	<b>O</b>	<b>O</b>	<b>O</b>	<b>O</b>	<b>O</b>
<b>Lounge Chair (Fabric)</b> hoop-base, recliner, rocker, footrest	<b>S</b>	<b>S</b>	<b>S</b>	<b>S</b>	<b>S</b>	<b>S</b>
<b>Rest Easy Multi-Position Lounge (Fabric)</b> throw pillows	<b>S</b>	<b>S</b>	<b>S</b>	<b>S</b>	<b>O</b>	
<b>Rest Easy Multi-Position Lounge (Fabric)</b> power recliner, dual-trundle, throw pillows						<b>S</b>
<b>Sofa (Fabric)</b> J-lounge, power recliner, drawer below					<b>S</b>	
<b>Sofa (UltraLeather)</b> J-lounge, power recliner, drawer below					<b>O</b>	



GALLEY	33V	35A	35L	37B	38J	38T
<b>Cutting Board</b> slideout, <b>Faucet</b> single-control w/pullout sprayer, <b>Lights</b> indirect, <b>Microwave/Convection Oven</b> w/vented range fan, touch control, stainless steel, Sharp® <b>Pantry(s)</b> , <b>Range Top</b> 3-burner w/storage below, sealed burners w/1 high-output, backsplash, Amana® <b>Range Covers</b> , <b>Refrigerator/Freezer</b> large double-door, Titanium Touch™ stainless finish, Norcold® <b>Wastepaper Basket</b> , <b>Water Filtration System</b> w/separate faucet	S	S	S	S	S	S
<b>Appliance Storage Cabinets, Decorative Storage Cabinet</b>		S				
<b>Range</b> 3-burner w/large oven, recessed, sealed burners, 1 w/high-output, Amana, <b>Refrigerator/Freezer</b> large double-door w/icemaker, Titanium Touch stainless finish, Norcold, <b>Refrigerator/Freezer</b> 4-door w/icemaker, Titanium Touch stainless finish, Norcold	0	0	0	0	0	0

BATH	33V	35A	35L	37B	38J	38T
<b>Cabinet</b> lavatory, <b>Cabinet</b> medicine, <b>Faucet (Lavatory)</b> single-control, <b>Faucet (Shower)</b> single-control, flexible showerhead w/Moen Posi-Temp®, <b>Light</b> shower, <b>Lights</b> makeup, <b>Shower Door</b> textured glass	S	S	S	S	S	S
<b>Fold Down Shower Seat</b>	0	0	0	0	0	0

BEDROOM	33V	35A	35L	37B	38J	38T
<b>Bed</b> queen, innerspring mattress w/underbed storage, <b>Bedsprad</b> , <b>Lights</b> decorative wall lamps, <b>Pillows</b> , <b>Throw Pillow</b>	S	S	S	S	S	S
<b>Bed</b> king, innerspring mattress			0			
<b>Bed</b> king, Sleep Number® by Select Comfort™ remote holders			0			
<b>Bed</b> queen, Sleep Number by Select Comfort, remote holders	0	0	0	0	0	0

EXTERIOR	33V	35A	35L	37B	38J	38T
<b>Awning</b> patio, <b>Awning Rails</b> rain gutters, <b>Entrance Door</b> w/ separate screen door, deadbolt lock, <b>Door</b> fuel-fill, <b>Entrance Door Steps</b> triple, electric w/doorjamb switch, <b>Ladder</b> , <b>Light</b> porch, <b>Light</b> service, driver's side, <b>Mirrors</b> electric, remote w/defrost, <b>Mudflaps</b> front & rear, <b>Receptacle</b> AC duplex, <b>Sidewall Skin</b> 1-piece smooth fiberglass, high-gloss, <b>Storage Compartments</b> smooth valance panels, trunk liner, gas struts, TriMark® KeyOne™ System, paddle latch, lights, interior master light shut-off switch	S	S	S	S	S	S
<b>Awning</b> patio, electric w/wind sensor & remote, <b>Front Protective Mask</b> w/full-body paint	0	0	0	0	0	0

SYSTEMS	33V	35A	35L	37B	38J	38T
<b>HEATING &amp; A/C – Automotive Heater/Air Conditioner, Home Comfort Plus Package</b> central air heat pump, auxiliary automotive heater, powered ventilator fans (bath & galley), <b>TrueAir® Central Air Conditioning System</b>	S	S	S	S	S	S
<b>Furnace</b> 35,000 BTU	S					
<b>Furnace</b> 40,000 BTU		S	S	S	S	S

SYSTEMS	33V	35A	35L	37B	38J	38T
<b>ELECTRICAL – Auxiliary Start Circuit, Batteries (2) (Coach)</b> Group 24 deep-cycle w/disconnect system, <b>Converter/Charger</b> 55-amp., electronic, <b>Dual-Battery Charge Control</b> automatic, <b>Electrical Distribution System</b> AC & DC breaker panels, <b>Generator</b> 5,500-watt, Cummins Onan® Marquis Gold™ gas, <b>Generator/Shoreline Automatic Changeover Switch</b> , <b>OnePlace® Systems Center</b> wall-mounted, battery digital voltmeter, energy management display, generator hourmeter gauge, generator start/stop switch, holding tank levels, LP tank level, solar panel/battery charger light, water heater switch & lights, water pump switch & light, water tank level, courtesy ceiling light, <b>Power Cord</b> 50-amp., flexible cord, <b>Powerpoint</b> 12-volt DC receptacle(s), <b>PowerLine® Energy Management System, Service Center (Electrical)</b> cable input, power cord, QuickPort® service connection hatch, telephone input, portable satellite dish hookup, <b>Solar Panel</b> 10-watt battery charger	S	S	S	S	S	S
<b>Inverter</b> DC/AC, 600-watt	0	0	0	0	0	0
<b>PLUMBING – Drain</b> 1" water tank, <b>Service Center (Drainage/Water)</b> city water hookup/tank diverter fill, drainage valves (3" graywater valve), exterior wash station w/pump switch, 10' sewer hose, QuickConnect® coupling valve, QuickPort service connection hatch, <b>Tank</b> flushing system, black tank only, <b>Tank</b> holding, heated compartment, <b>Tank</b> LP, permanent mount w/gauge, <b>TrueLevel™ Holding Tank Monitoring System</b> , <b>Water Heater</b> 10-gallon electronic ignition, 120 VAC/LP gas w/motoraid, <b>Water System Filtration Package</b> housing, filter, wrench, <b>Water System Winterization Package</b> water heater bypass valve & siphon tube, <b>Water Pump</b> demand, permanent magnet motor w/diaphragm, <b>Water Tank Fill</b> pressurized city hookup w/diverter valve	S	S	S	S	S	S
<b>Washer/Dryer Combination</b> (NA on 35L w/king bed)		0	0	0	0	0

SAFETY	33V	35A	35L	37B	38J	38T
<b>Assist Bar</b> interior, <b>Assist Handle</b> exterior, acrylic, <b>Bumpers</b> front & rear, <b>Detectors/Alarms</b> LP leak, smoke, carbon monoxide, <b>Fire Extinguisher</b> 10 BC, <b>Ground Fault Interrupter</b> , <b>Lights</b> high-mount brakelamps, <b>Light</b> courtesy w/wall switch, <b>Lights</b> daytime running lamps, fog, <b>Seat Belts</b> cab, 3-point, adjustable, <b>Window</b> escape, <b>Windshield</b> one-piece, laminated safety glass	S	S	S	S	S	S
<b>Child Seat Tether Anchor</b> w/BenchMark dinette	S	S	S	S		S

WARRANTY <sup>7</sup>	33V	35A	35L	37B	38J	38T
<b>12-month/15,000-mile basic warranty,<sup>8</sup> 36-month/36,000-mile limited warranty on structure,<sup>9</sup> 10-year limited parts &amp; labor warranty on roof skin<sup>9</sup></b>	S	S	S	S	S	S

- The height of each model is measured to the top of the tallest standard feature and is based on the curb weight of a typically equipped unit. The actual height of your vehicle may vary by several inches depending on chassis or equipment variations. Please contact your dealer for further information.
- Adventurer floorplans feature a wide-body design - over 96" In making your purchase decision, you should be aware that some states restrict access on some or all state roads to 96" in body width. Before making your purchase decision, you should confirm the road usage laws in the states of interest to you.
- The load capacity of your motor home is designated by weight, not by volume, so you cannot necessarily use all available space when loading your motor home.
- Capacities are based on measurements prior to tank installation. Slight capacity variations can result due to installation applications.
- Capacities shown are tank manufacturer's listed water capacity (W.C.). Actual filled LP capacity is 80% of listing due to overfilling prevention device on tank.
- Actual towing capacity is dependent on your particular loading and towing circumstances which includes the GVWR, GAWR, and GCWR as well as adequate trailer brakes. Please refer to the Operator's Manual of your vehicle for further towing information.
- See separate chassis warranty.
- See your dealer for complete warranty information.

NA Not Available

S Standard

0 Optional

Not all items available in combination. See dealer for details.

Winnebago Industries® continuing program of product improvement makes specifications, equipment, model availability, and prices subject to change without notice. Comparisons to other motor homes are based on the most recent information available at printing.



INTERIOR DECOR

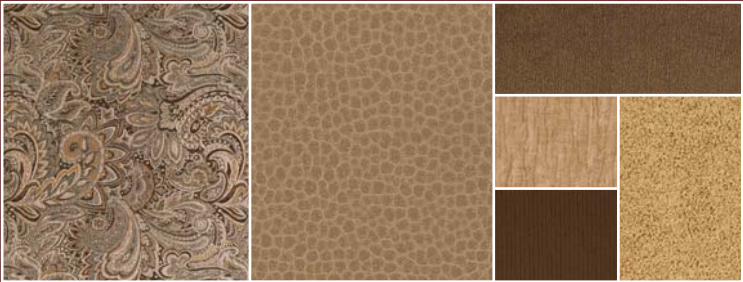
Choose from three fabric selections and three cabinet wood choices.



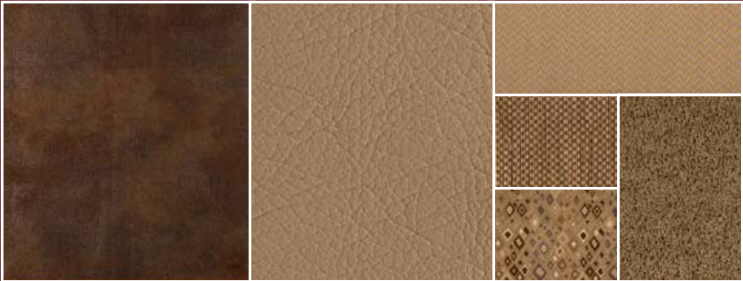
MAIN	ULTRA-LEATHER	BEDSPREAD	
		ACCENT	CARPET
		ACCENT	



Cool Jazz w/available Truffle UltraLeather™



Cocoa Pecan w/available Briarwood UltraLeather



Log Cabin w/available Timber UltraLeather



Concert Cherry



Sierra Maple



Washed Maple

## EXTERIOR STANDARD GRAPHICS



Sandstone Beige Metallic



Spruce Green Metallic

## FULL-BODY PAINT



Dusk



Graphite



Mocha Frost



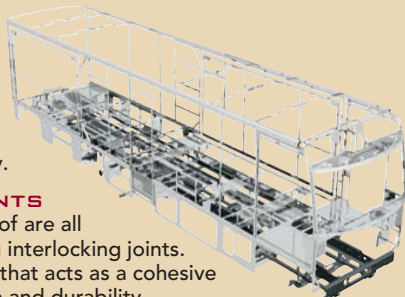


**BUILT BY WINNEBAGO INDUSTRIES.  
BUILT TO LAST.**

Winnebago motor homes are built by Winnebago Industries, the company that defined motor homes. The company that built its reputation on quality construction. The company that transformed the motor home concept into a way of life.

Today, Winnebago Industries brings that reputation for quality and its 49-year history of motor home innovation to the design and construction of every motor home. It's all a part of SuperStructure®, our exclusive system of proprietary structural components that instills each motor home with improved strength and durability.

**SOLID FOUNDATION** Steel and aluminum truss work provides a solid, flat foundation for the floor and sidewalls. Winnebago Industries engineers also take special care to distribute the weight of components to ensure proper handling and stability.



#### **INTERLOCKING JOINTS**

The floor, sidewalls and roof are all integrally connected using interlocking joints. This creates a coach body that acts as a cohesive unit for improved strength and durability.

**E-COATING** Winnebago Industries employs an exclusive 12-stage automotive-style dip tank process to apply an advanced electrodeposition coating on critical steel components for superior corrosion protection.



**WEB**

**THERMO-PANEL® SIDEWALLS** Invented by Winnebago Industries, Thermo-Panel construction combines a fiberglass panel, high-density, block-foam insulation and aluminum support structures to create some of the most durable, lightweight sidewalls in the industry.

**ATTENTION TO DETAIL** Whether it's sending every coach through a high-pressure water tunnel to check for leaks or labeling each individual wire and bar-coding parts to save time and frustration during service, Winnebago Industries considers every detail to ensure your Winnebago motor home provides you with years of pleasure.

**STRONG AS STEEL** Appliances are secured directly to embedded steel plates for added safety. Windshields are also mounted in steel with an automotive-style sealant; lesser designs use a rubber gasket to mount the windshield in fiberglass.



1-year-old Winnebago fiberglass roof



1-year-old competitor's rubber roof

**FIBERGLASS ROOF** The Adventurer features a crowned, one-piece fiberglass roof, backed with a 10-year limited parts-and-labor roof skin warranty. Fiberglass offers superior strength, attractiveness and durability over the rubber roofs found on many competitive models which can chalk, streak and degrade over time. Fiberglass also provides increased puncture and tear resistance.



**TAKE A TOUR** We're proud of our process, state-of-the-art facilities and the people who make Winnebago Industries number one. We invite you to visit our factory in Forest City, Iowa, for a first-hand look at the dedication and technology behind every motor home we build.



**RECOGNIZED QUALITY** The Recreation Vehicle Dealer Association annually rates RV manufacturers and awards the Quality Circle award to manufacturers who provide exceptional products, service and support. Winnebago Industries is proud to be the only manufacturer to receive this award every year since its inception.



**COMMITTED TO SERVICE** We back our motor homes with the industry's best service after the sale.

- 12-month/15,000-mile basic limited warranty
- 36-month/36,000-mile warranty on structure
- Standard 10-year limited parts-and-labor roof skin warranty
- Complimentary 24-hour roadside assistance program
- TripSaver Fast Track Parts. TripSaver guarantees that in-stock warranty parts ship directly to your dealer within 24 hours.
- National dealer service network



**WIT CLUB** Winnebago owners are like family. Joining the Winnebago-Itasca Travelers is a great way to meet and travel with other Winnebago enthusiasts. Members enjoy:

- Caravans and rallies
- Local and state group activities
- RV travel benefits



**WINNEBAGOIND.COM** Visit us on the web for more info on all of our motor homes, the latest product updates and a host of web-exclusive content.

**For Sales and Service Information Contact:**

Colton RV  
North Tonawanda, NY 14120  
(716) 694-0188  
(800) 628-4889  
www.ColtonRV.com

Colton RV  
Orchard Park, NY 14127  
(716) 957-3250  
(800) 628-4889  
www.Coltonrv.com

Built proudly by



NYSE listing: WGO

©2007 Winnebago Industries, Inc.

Printed in USA

Seat belts are your most important hookup. Always buckle up.