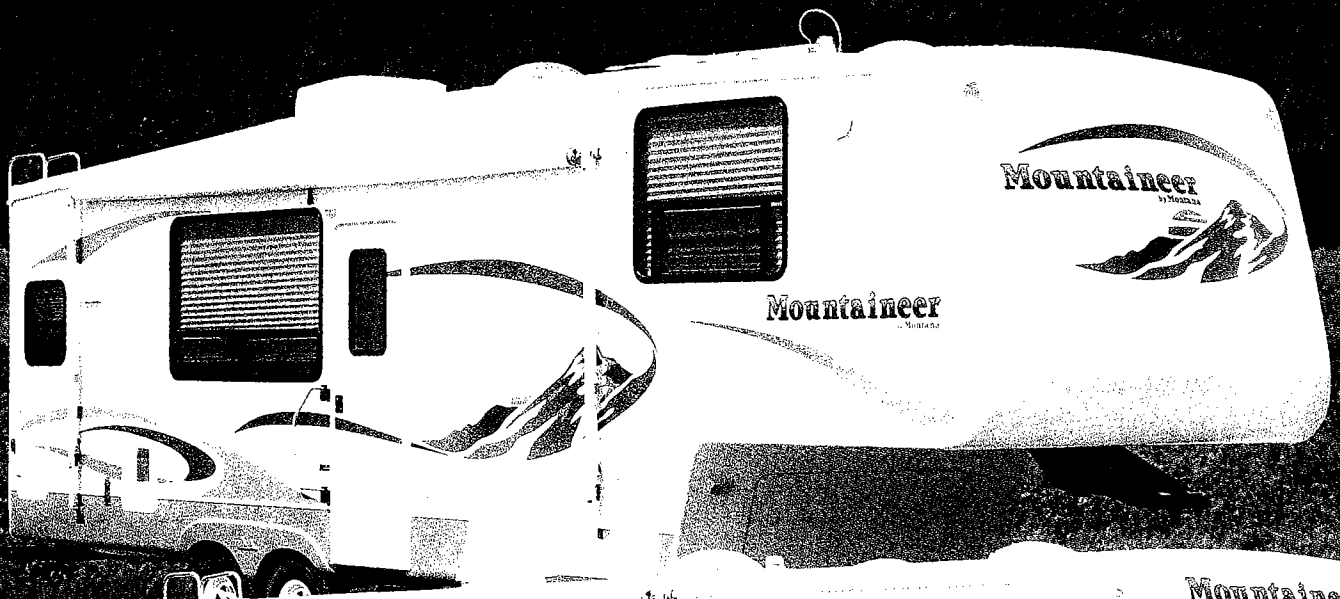


Mountaineer

"Built by People who know RVing"

2005





Above, a splendid example of Mountaineer luxury, this spacious 297 RKS Rear Kitchen floorplan offers a U-shaped workspace for ultimate convenience in storage, meal preparation, and entertaining. The unique L-shaped sofa with coordinated valances and the harmonizing dinette chairs and recliner complete the living area, a total effect which brings recreational vehicle interior decor to new heights of elegance and comfort. The mountain size window next to the doorway allows a campsite view while adding a residential look to your outside entry. This Rosewood color scheme is a customer favorite.

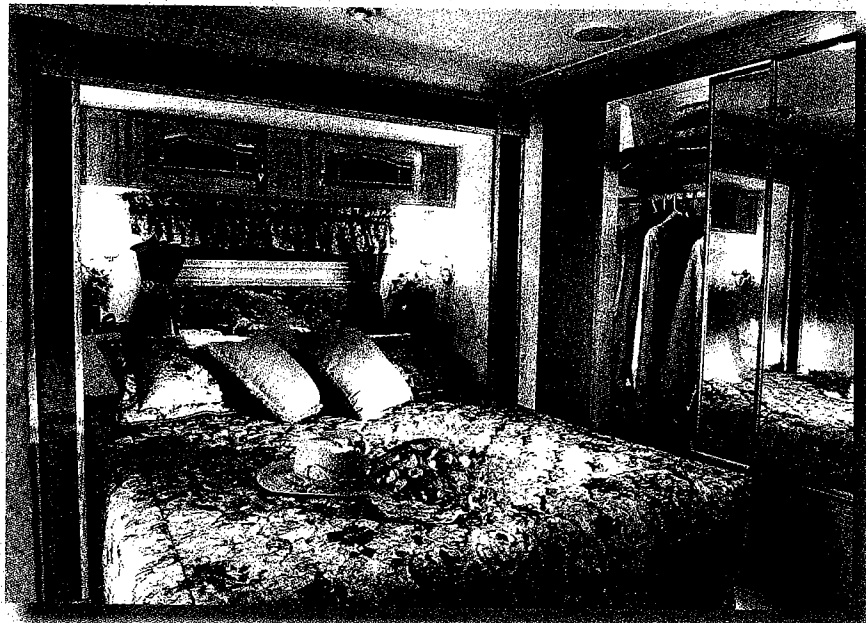
Mountaineer

Finer Recreational Vehicles for Life's Best Times

Luxuriously Appointed All-Aluminum-Constructed Travel Trailers and Fifth Wheels



The beauty of Mountaineer's Desert Sunset decor enhances this fabulous 318 BHS floor plan featuring a contoured designer sofa and plate-depth overhead cabinets in the slide-out area. The entertainment center includes a built-in 24" television.



Mountaineer's bedroom in the 335 RLBS travel trailer features a queen bed in the slide-out area, convenient bedside shelves and additional overhead storage. The mirrored closet spans the entire front wall.

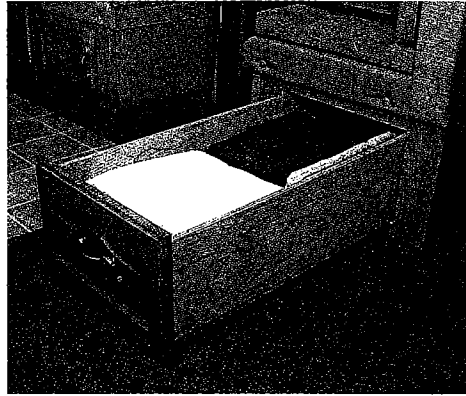


The slide-out pantry has metal drawer glides, a shelf for high packages, and a separate waste container area below.

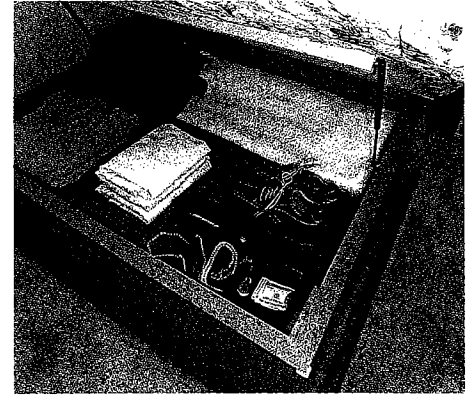
Storage

Space Is Ample and Easy to Access

Ask any experienced RVer and he or she will tell you storage is a priority. We've planned carefully so that you can travel with all the items which are important to your leisure time, and we've positioned the storage, inside and out, so it is easy to access. There is room for clothing, linens, equipment and outdoor furniture, so go ahead, take it along.



The huge underseat storage drawer beneath the dinette bench is easy to access without disturbing diners.

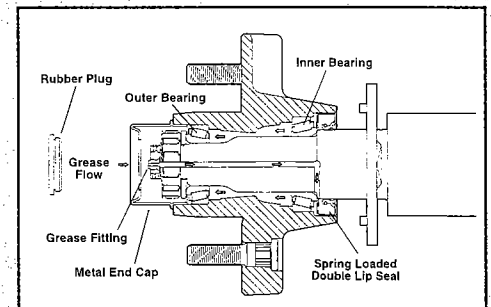


Underbed storage has room for bulkier, larger items and the convenient Brinks™ safe is hidden and secured for your protection.

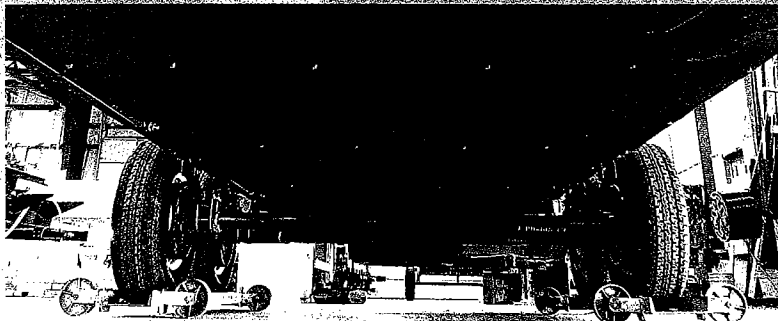
Towability

Plus Exterior Features Set Mountaineer Apart in Value and Quality

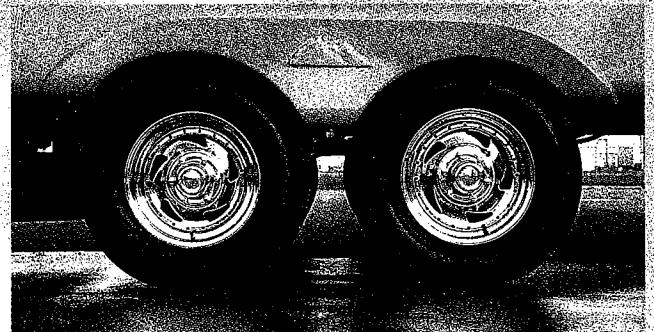
Mountaineer travel trailers and fifth wheels are part of the Montana family of recreational vehicles, the best towing products on the market today. Constructed with Total Surround Aluminum Plus™ framing in the walls, roof and floors, Mountaineer weighs 700-1,500 pounds less than comparable wood-framed brands. Further, Mountaineer achieves huge weight reduction through the use of laminated sidewalls, which also provide superior strength and higher insulation values. The Mountaineer line is loaded with state-of-the-art details like its ABS underbelly which improves air flow while it protects the underbody and insulates the holding tanks. As for value, we believe you will agree there is no match in its category, even as you observe Mountaineer's uncompromised luxury. Mountaineer offers structure, exterior style and efficiency which matches its remarkable interior quality.



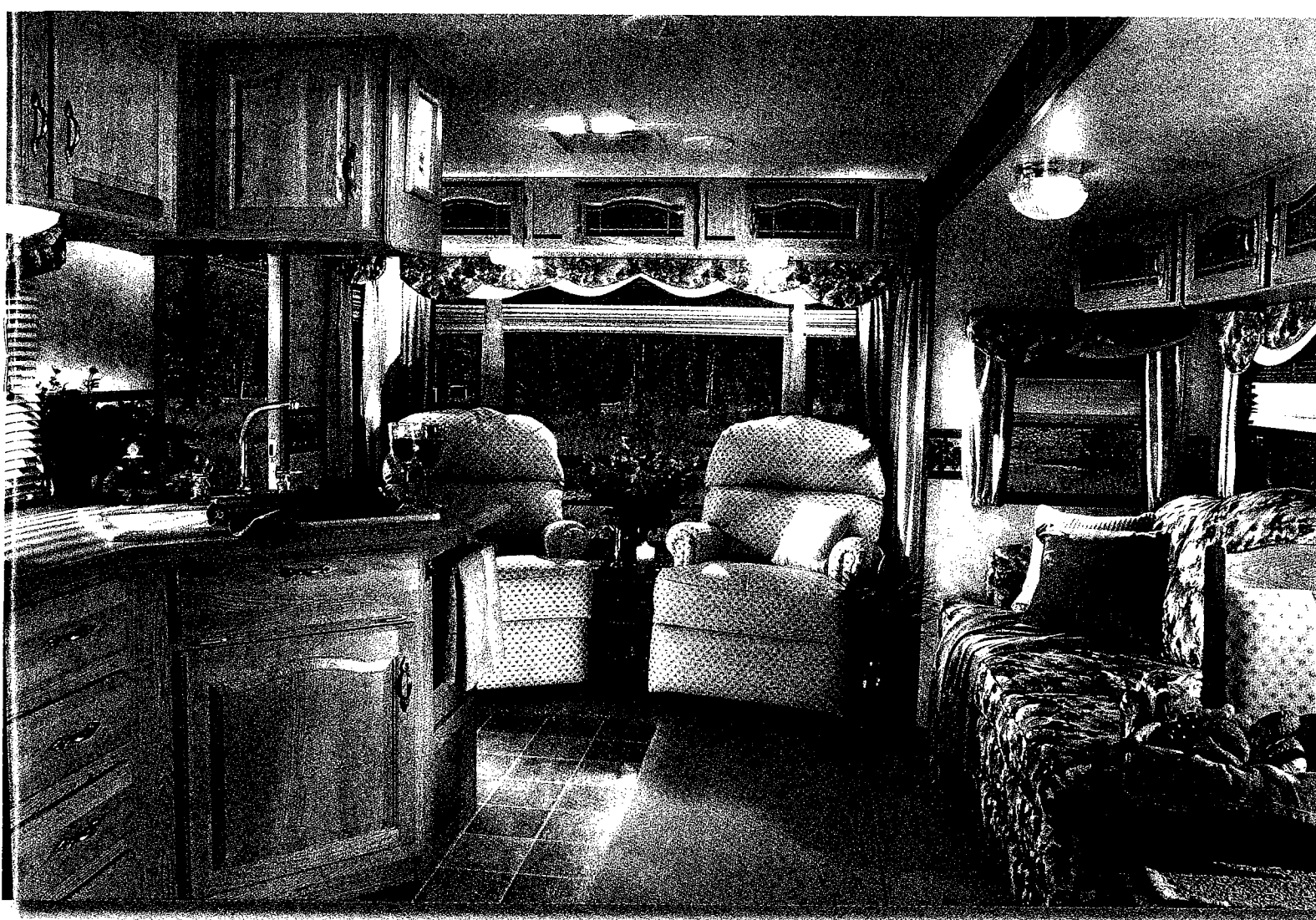
Dexter E-Z Lube™ axles can be lubricated without removing the wheel.



The fully enclosed ABS underbelly, built in sections for ease of service, allows for extended seasonal use.

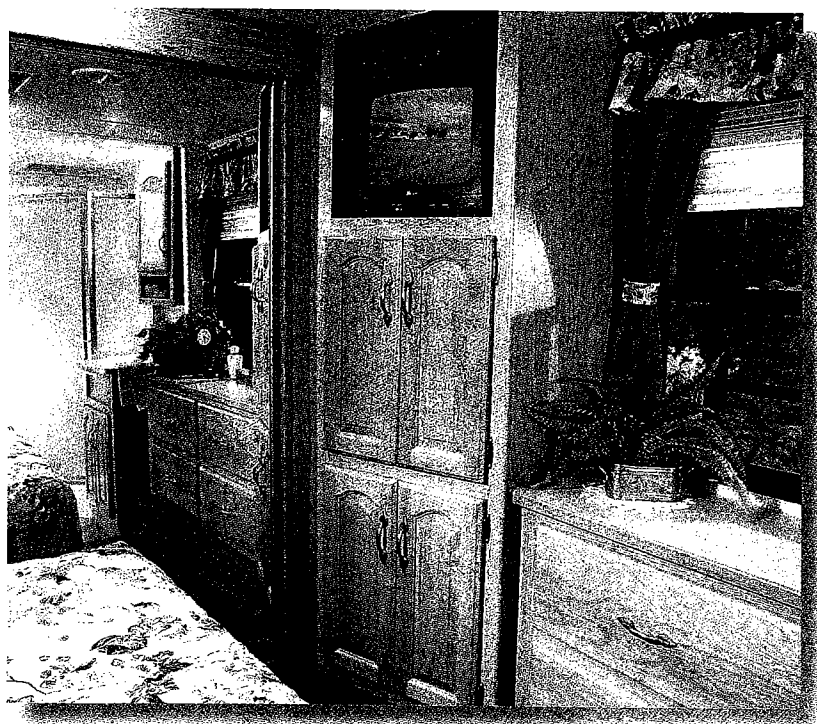


Optional chrome sport wheels add even more style to your Mountaineer exterior.



Huge fully vented windows provide a scenic view from the comfort of this rear lounge Mountaineer. You can enjoy nature while relaxing in residentially designed high-back recliners in this 315 RLS floor plan, shown here

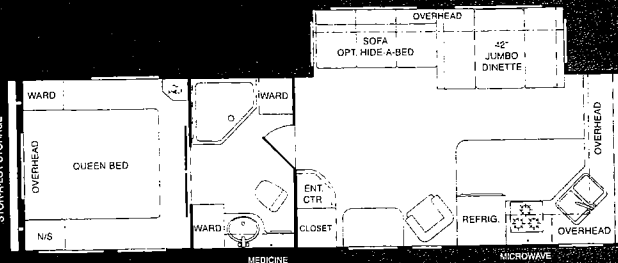
in Spring Floral decor. The high 6'8" sidewalls offer ample headroom and space for extended cabinetry. The optional free-standing dinette in the slide-out room includes a single pedestal table and four chairs with oak-framed backs. All Mountaineers offer residential quality cabinetry featuring screwed together cabinet faces with solid hardwood doors and drawer fronts. A high-rise designer faucet with deep bowl sinks and deluxe appliances complete the perfect kitchen.



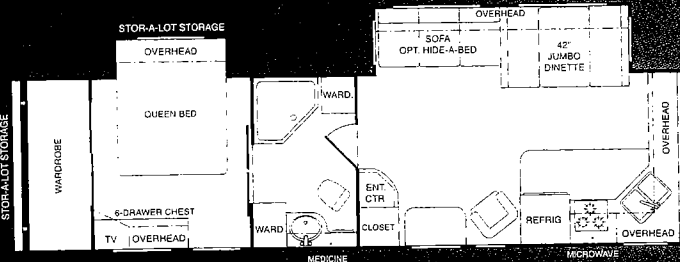
At left, Mountaineer's bedroom in the 297 RKS fifth wheel is designed with an angled corner cabinet, giving you an excellent view for the late, late show. Notice the deep dresser drawers for storing blankets and sweaters. A complete vanity and medicine chest, private commode and glass-enclosed corner shower round out this luxurious master bedroom suite.

Mountaineer Life — Easy and Carefree... Just What You've Always Wanted

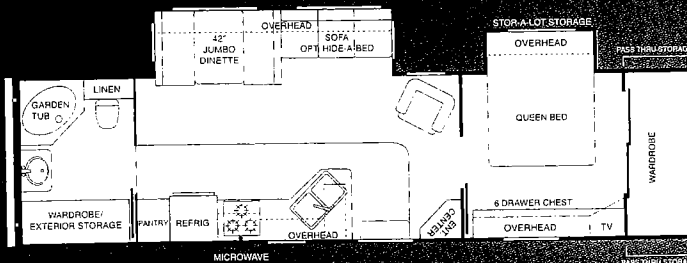
Travel Trailers



305FKS

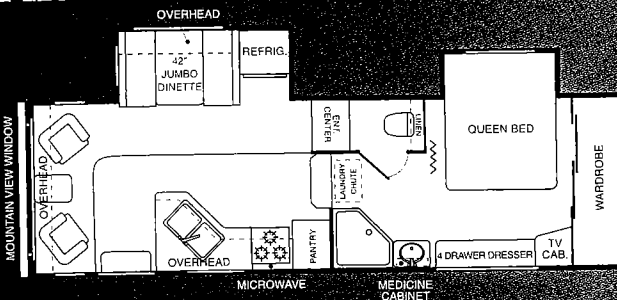


325FKBS

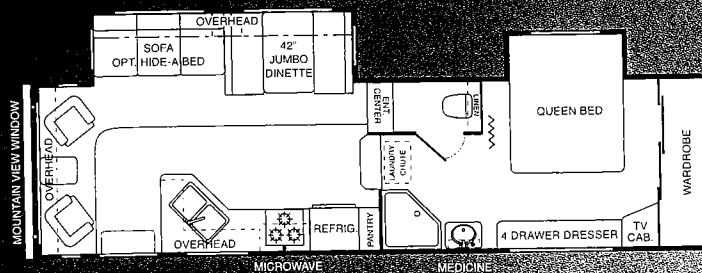


333RBBS

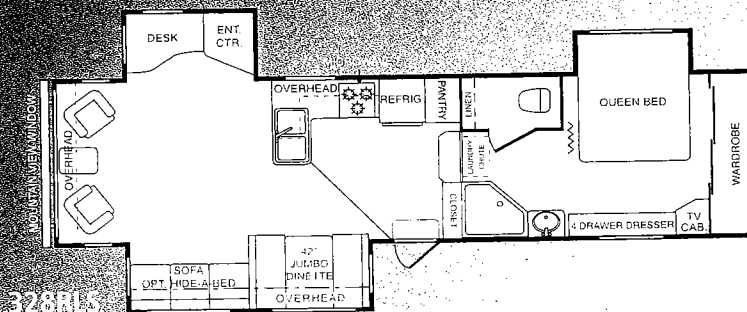
Fifth Wheels



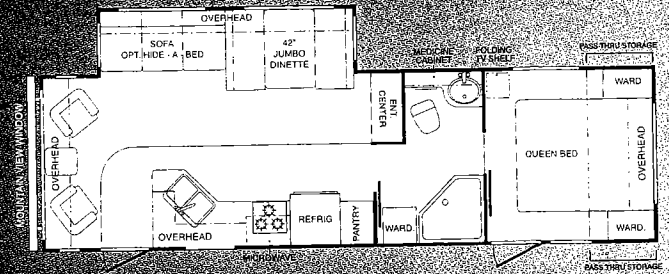
277RLS



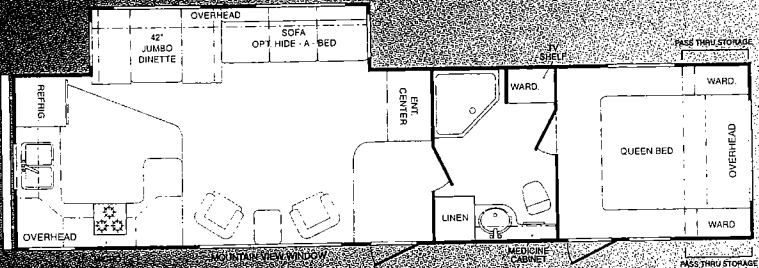
298RLS



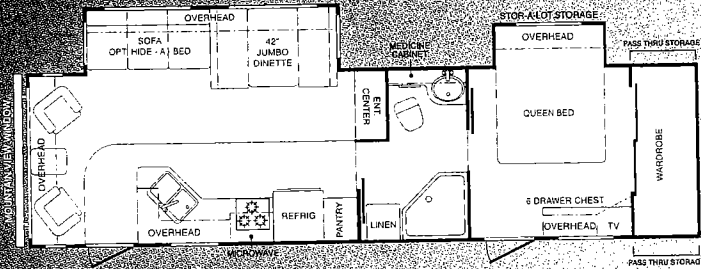
328RLS



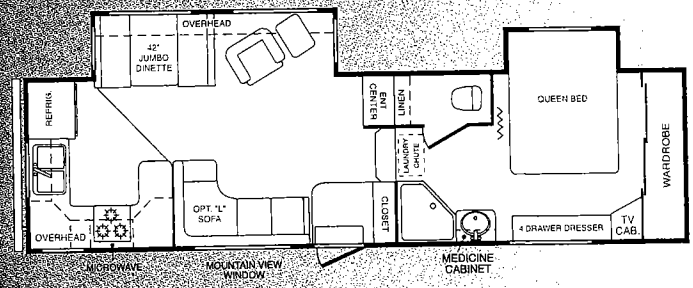
315RLS



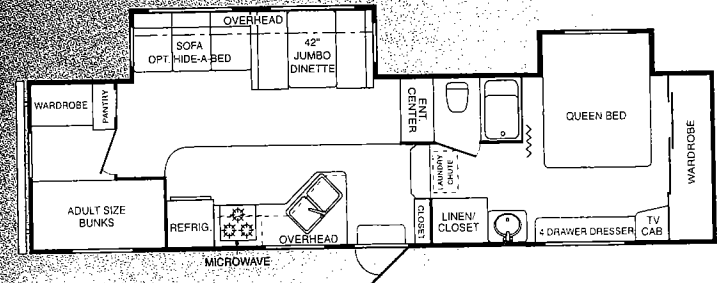
327RKS



335RLBS



297RKS



299RLS

Roof

1. One-Piece EPDM Rubber Roof Membrane with 12-Year Warranty
2. Aluminum Radius Roof Transition Molding
3. 3/8" Structurewood Roof Decking with 25-Year Warranty
4. 5" Fabricated Steel Truss Rafters
5. Formaldehyde-free Fiberglass Insulation
6. Ceiling Decking
7. Vinyl Ceiling
8. Insulated, Foam-Core Air Conditioning Duct

Structural Integrity

Sidewalls

9. Gel-Coated Filon™ Fiberglass
10. 1/8" Luan Board
11. Second Layer 1/8" Luan Board with Seams Staggered
12. Solid Block Insulation Foam
13. Interior Decorator Board
14. 2" Welded Aluminum Wall Studs
15. Electro-Galvanized Sheet (EGS) Metal Backing Strips
16. Radius Corner Blocks
17. Extended Hitchpin (FW)

Floor

1. 10" Steel I-Beam
2. 3" Welded Aluminum Floor Joists on 16" Centers
3. 3" Large-Capacity Heat Duct
4. Full Radius Wrap Aluminum Enclosure
5. DARCO Waterproof Underbelly
6. Fiberglass Insulation
7. 5/8" Seamless, Structurewood Floor Decking with 25-Year Warranty
8. Carpet Pad
9. Residential-Grade Carpeting with Stain Protectant
10. 2" Heat Duct from Furnace to Underbelly
11. Enclosed and Insulated Water Lines
12. Heavy-duty 1/4" ABS Underbelly

Due to continuous product improvement, modifications may be made without prior notification or obligation. UNLOADED-VEHICLE-WEIGHT is calculated as base unit with standard equipment only.

| MODEL NAME | 305FKS | 315RLS | 325FKBS | 327RKS | 333R8BS | 335RLBS | 277RLS | 297RKS | 298RLS | 318BHS | 328RLS |
|--------------------------------|--------|--------|---------|--------|---------|---------|--------|--------|--------|--------|---------|
| GROSS DRY WT. (UVW) | 7180 | 7510 | 8050 | 7860 | 8160 | 8340 | 8080 | 9320 | 8910 | 9470 | 10015 |
| CARRYING CAPACITY | 2720 | 2390 | 3210 | 3340 | 3180 | 2760 | 3700 | 2880 | 3130 | 2690 | 2120 |
| HITCH | 1060 | 820 | 1100 | 1040 | 1180 | 940 | 1620 | 2040 | 1880 | 2000 | 1975 |
| EXTERIOR LENGTH | 31' 8" | 33' 2" | 33' 8" | 35' 1" | 35' 4" | 35' 5" | 29' 6" | 33' 0" | 32' 6" | 34' 4" | 34' 11" |
| EXTERIOR HEIGHT --- TOP of A/C | 11' 1" | 11' 1" | 11' 1" | 11' 1" | 11' 1" | 11' 1" | 12' 9" | 12' 9" | 12' 9" | 12' 9" | 12' 9" |
| FRESH WATER CAPACITY | 60 | 60 | 60 | 60 | 60 | 60 | 60 | 60 | 60 | 60 | 60 |
| WASTE WATER CAPACITY | 38 | 38 | 38 | 38 | 38 | 38 | 38 | 38 | 38 | 38 | 38 |
| GREY WATER CAPACITY | 76 | 76 | 76 | 76 | 76 | 76 | 76 | 76 | 76 | 76 | 76 |

GVWR = Gross Dry Weight + Carrying Capacity

Standard Features

Interior

Living Area

| | TT | FW |
|--|----|-----|
| 6'8" interior head room | S | N/A |
| Residential carpeting and upholstery with fabric protector | S | S |
| Entertainment center | S | S |
| Tall slide room with "plate depth" overhead cabinets | S | S |
| Swivel rocker(s) (Most models) | S | S |
| Decorative jack knife sofa | S | S |
| Mini blinds | S | S |
| 12V rechargeable flashlight near exit* | M | M |

Kitchen

| | | |
|--|---|---|
| Solid hardwood cabinet doors with cathedral tops | S | S |
| Heavy duty steel drawer glides with ball bearing rollers | S | S |
| Cabinet toe kicks* | M | M |
| Lighted range hood with fan | S | S |
| Wide deep drawers — real wood | S | S |
| Residential-size overhead cabinets | S | S |
| Sink cover cutting board (1) | S | S |
| Garbage can | S | S |
| Oak knife holder in countertop | S | S |
| Silverware tray | S | S |
| Deluxe bowl kitchen sink with high-arch faucet | S | S |

Bathroom

| | | |
|--|---|---|
| Thetford foot pedal toilet* | M | M |
| Larger residential-size bath sink | S | S |
| Corner shower w/glass enclosure (N/A 318) | S | S |
| Extra-large bathtub (318) | S | S |
| Decorative shower curtain (318) | S | S |
| Medicine cabinet — large mirrored w/adjustable shelves | S | S |
| Secured Brinks® Safe for valuables | S | S |

Bedroom

| | | |
|--------------------------------------|---|---|
| Deluxe innerspring mattress* | M | M |
| Quilted bedspread and 2 pillow shams | S | S |
| Overhead TV shelf and outlet | S | S |

Appliances

| | | |
|--|---|-----|
| 6' Double-door refrigerator | S | N/A |
| RV microwave oven | M | M |
| 13,500 BTU ducted roof air conditioner with wall mount thermostat and "Quick Cool" | M | M |
| High-output range with automatic ignitor and 22" oven* | M | M |
| 24" Stereo Television (N/A on 305, 325) | O | M |
| TV antenna and booster | M | M |

Utilities

| | | |
|--|---|---|
| Water heater by-pass kit* | M | M |
| 6-gallon gas/electric DSI water heater | S | S |
| Systems monitor panel | S | S |
| 45-amp convertor | S | S |
| 30-amp power cord | S | S |
| Automatic ignition furnace with in-floor ducting | S | S |
| Phone jack | S | S |
| Cable TV hook-up | S | S |

S = Standard Feature

O = Option

M = Moving to Montana Package

* = Customer Convenience Group

¹ Cannot be run at same time as primary air conditioner.

Exterior

| | TT | FW |
|---|-----|-----|
| Welded total-aluminum-framed walls and floor | S | S |
| 2" laminated fiberglass exterior walls | S | S |
| 5" fabricated steel truss rafters | S | S |
| Molded fiberglass front end cap | S | S |
| Block foam insulation in sidewall (R-9) | S | S |
| Residential fiberglass insulation in floor and roof | S | S |
| Fully enclosed and heated underbelly | S | S |
| Heated holding tanks and water lines | S | S |
| Enclosed and heated, below-floor fresh water tank | S | S |
| Extra wide 30" entrance door | S | S |
| Radius baggage doors with inside fasteners | S | S |
| Smooth-operating, easy-to-use entrance steps | S | S |
| Radius wrap lower walls | S | S |
| Dexter E-Z lube™ axles* | S | S |
| Deluxe patio awning | S | S |
| One-piece, fully decked rubber roof | S | S |
| Dark tint windows* | M | M |
| Safety glass windows | S | S |
| Aluminum bumper cover | S | S |
| Outstanding exterior storage | S | S |
| LP bottle cover* | M | N/A |
| Extended hitch pin | N/A | M |
| 10" steel I-Beam frame | S | S |

Options

Exterior

| | TT | FW |
|---------------------------|-----|-----|
| Power tongue jack | O | N/A |
| Slide awning — main room | O | O |
| Slide awning — bedroom | O | O |
| Slide awning — third room | N/A | O |
| Exterior shower | O | O |
| Rear roof ladder | O | O |

Decor

| | | |
|--|---|---|
| Day/night shades | O | O |
| Free-standing dinette with 4 chairs | O | O |
| High back recliner(s) in place of swivel rocker(s) | O | O |
| "L" sofa with hidden storage (297, 327 only) | O | O |
| Second sink cover | O | O |

Equipment

| | | |
|--|-----|-------|
| 15,000 BTU A/C with "Quick Cool" | O | O |
| Bedroom 13,500 BTU A/C ¹ | O | O |
| Power vent fan | O | O |
| 24" Stereo Television (315, 327, 333, 335) | O | M |
| 10 gallon gas/electric DSI water heater | O | O |
| 8' Large double-door refrigerator | O | VALUE |
| Ceiling fan | N/A | O |

Value Package

| | TT | FW |
|---------------------------------------|-------|-------|
| Crank-down stabilizer jacks | (4) • | (2) • |
| Fold-away entry/exit handle | • | • |
| Security light, door side | • | • |
| Security light, road side | • | • |
| Skydome over tub or shower | • | • |
| 8' Large double-door refrigerator | N/A | • |
| Raised-oak refrigerator front | • | • |
| Range cover | • | • |
| Bookshelf, AM/FM, CD, Stereo cassette | • | • |
| Electric front jacks | N/A | • |
| Undermount spare tire and carrier | • | • |

Your Montana Mountaineer Dealer:

Mountaineer is a product of:



Keystone RV Company



17400 Hackberry Drive Goshen, IN 46526

(574) 535-2100 www.keystone-mountaineer.com

Product information and photography are as accurate as possible at the time of publication. Colors and finishes are photographic representations and may appear differently when viewing actual materials. Some features shown are optional. Features, prices and specifications are subject to change without notice. M 8/04