

# KODIAK



**LIGHT ON WEIGHT, HEAVY ON FEATURES**





# YES, IT HAS THAT!

As the leader in ultra light technology, Kodiak offers an innovative, aerodynamic profile for easier towing and better fuel economy. But just because you can tow a Kodiak with an SUV, crossover, minivan or light truck, doesn't mean you'll be lacking amenities. Every Kodiak we build is packed full of modern interiors, features and conveniences to improve your camping experience.

## KODIAK

**LIGHT** | **HEAVY**  
**ON WEIGHT** | **ON FEATURES**

KODIAK ULTIMATE



KODIAK ULTIMATE BEDROOM





KODIAK ULTIMATE 279RBSL | GRAPHITE

## IDEAL KITCHEN

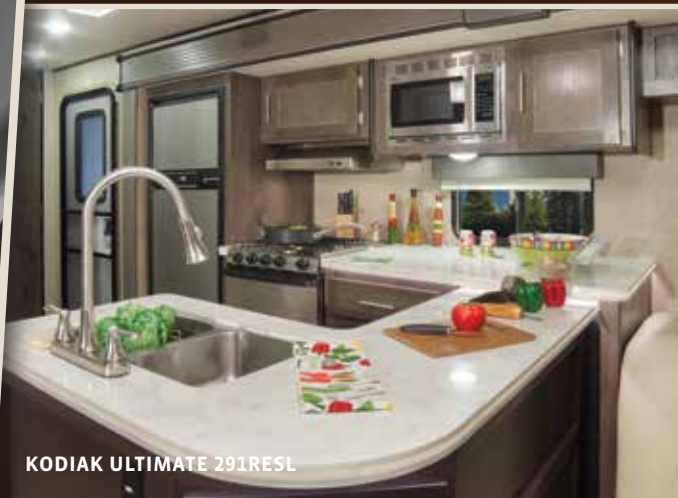
Our feature-rich kitchen offers all the conveniences of home. Modern island, stainless-steel appliances, high-power microwave, expansive solid-surface countertops with LED lights, high-rise faucet with convenient sprayer and so much more!

## STORAGE

Premium shelving and ample storage provide plenty of room for all your necessities with modern styling of illuminated LED countertops.



KODIAK ULTIMATE PAINTED LED FRONT CAP



KODIAK ULTIMATE 291RESL



KODIAK ULTIMATE 291RESL



## **PICTURE-PERFECT AMENITIES**

**Connecting you to the outdoors through larger-window views.**

- ▶ Enjoy the outdoors even more with the largest windows offered in the travel trailer market.
- ▶ Tinted safety-glass windows and night shades give you options, day or night.
- ▶ The handy microwave, three-burner cooktop with oven, range hood and fan light offer everything you need for whipping up meals.
- ▶ Sunlight is maximized with skylights in all bathrooms and kitchens.
- ▶ A large folding grab handle, black tank flush and exterior spray ports provide the utmost convenience in Kodiak Express.



KODIAK EXPRESS 253RBSL BEDROOM

KODIAK EXPRESS





KODIAK EXPRESS 253RBSL | MEDALLION

# KODIAK

EXPRESS



## CONVENIENCE COUNTS

### QUALITY APPLIANCES

Stainless-steel appliances provide the ultimate in form and function.



### 7-YEAR WARRANTY

Beauflor flooring offers durability and style for years of enjoyment.



### BEAR CAVE STORAGE

We maximized the Kodiak's storage area and made it 40% larger than the competition. More space means even more room to bring it all!



### LED POWER AWNING

Our LED power awning provides maximum lighting during camping stays.



SS 253RBSL | MEDALLION

KODIAK EXPRESS 253RBSL



**KODIAK EXPANDABLE**



## **EXPANDING YOUR OPTIONS**

Kodiak Express offers the best in maximized modern living space. Combine all the conveniences, styles and craftsmanship of the conventional lightweight Kodiak with handy expandable sleeping spaces, and you've just broadened your camping options.



KODIAK EXPRESS EXPANDABLE 222ES





KODIAK EXPRESS EXPANDABLE 222ES | CELEBRATION



KODIAK EXPRESS EXPANDABLE 222ES | CELEBRATION

## BROADENING YOUR HORIZONS

### DURABLE TENT CONSTRUCTION

With a 7-year tent warranty, our mold resistant, double-stitched AquaShield Aqualon material doesn't stretch, shrink or crack, giving you long-lasting durability in any weather condition.



### DINING VERSATILITY

With our oversized dinettes and expansive seating areas, you can enjoy more meals around more family.

### SWEET DREAMS

There's room for everyone with multiple guest-friendly sleeping options. From our spacious tent beds to the optional tri-fold sofa bed, Kodiak Express offers everything you need for a good night's rest.

### RESIDENTIAL CABINETRY

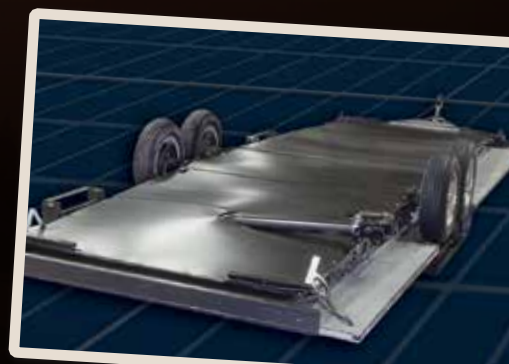
Kodiak Express' deep storage drawers with steel roller-ball bearing guides and dedicated pots and pans storage are all encased in beautiful maple-cherry glazed cabinets.

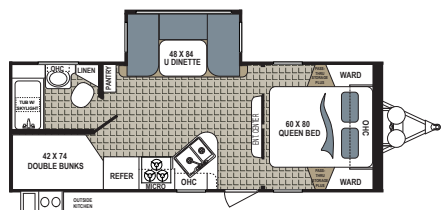
### STORAGE GALORE

Our huge pantry and oversized wardrobe enable you to bring the things you need for an extended stay on the road.

### ENCLOSED & HEATED UNDERBELLY

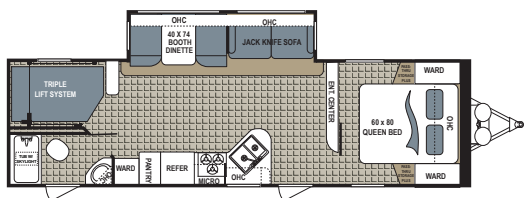
Our fully enclosed and heated underbelly protects your investment from the elements, road debris and rodents.





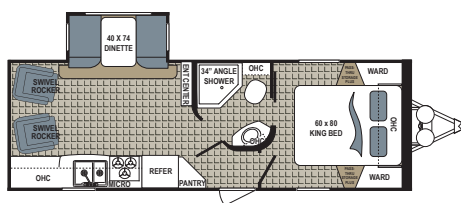
### KODIAK | 240BHSL

Ext. Length: 27' Ext. Height: 10' 10" Average Shipping Weight: 5,049 Sleeps: 4-6



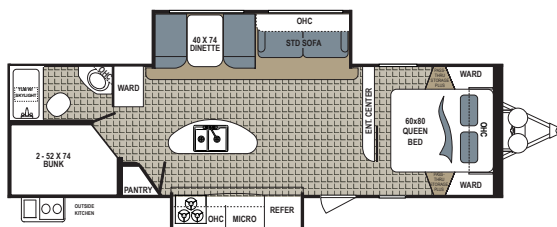
### KODIAK | 295TBHS

Ext. Length: 33' 3" Ext. Height: 10' 10" Average Shipping Weight: 5,882 Sleeps: 7-8



### KODIAK | 252RLSL

Ext. Length: 28' 10" Ext. Height: 10' 10" Average Shipping Weight: 5,100 Sleeps: 4-6



### KODIAK | 306BHSL

Ext. Length: 34' 10" Ext. Height: 11' Average Shipping Weight: 6,646 Sleeps: 7-8

## ROOF

- ▶ Dutchmen uses a fully walkable, 5" thick truss-style, high-strength aluminum-frame roof.
- ▶ The fully welded aluminum tubular framed roof offers strength and sustainability for lasting appeal.
- ▶ The TPO roof system ensures exceptional resistance to ultraviolet, ozone and chemical exposure, backed by a 12-year manufacturer's warranty.
- ▶ High-density structural foam provides superior structural strength and reduces weight for easier towing.

## WALL

- ▶ High-gloss fiberglass exteriors provide long-lasting appeal.
- ▶ Welded aluminum tubular framed walls give Kodiak a lightweight, durable structure.
- ▶ High-density structural foam insulation provides superior insulation and reduces weight for easier towing.
- ▶ Constructed of durable, high-impact ABS plastic, your fender skirts curve underneath your Kodiak for ultimate protection.
- ▶ Designed to be towed by light trucks and sports utility vehicles, Kodiak's aerodynamic profile pushes air up the front wall and over the roof, improving towing ease and fuel economy.

## FLOOR

- ▶ Dutchmen's resilient Beauflor flooring surface is backed with a 7-year warranty to ensure durability and your satisfaction for the long haul.
- ▶ We include high-density structural foam for improved performance.
- ▶ Each Kodiak's PolyPly waterproof vapor barrier floor surface has passed a three-cycle and 24-hour soak test for leak-proof reliability.

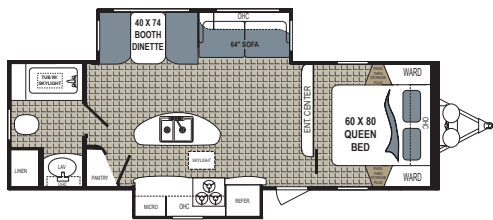
## CHASSIS

- ▶ Four corner stabilizer jacks help make every spot the perfect camping spot.
- ▶ We boast the strongest frame found in a travel trailer with fully extended and welded outriggers for added support and durability.

## DUTCHMEN CONSTRUCTION

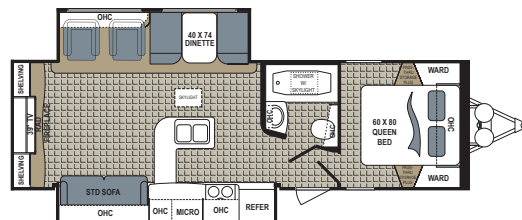






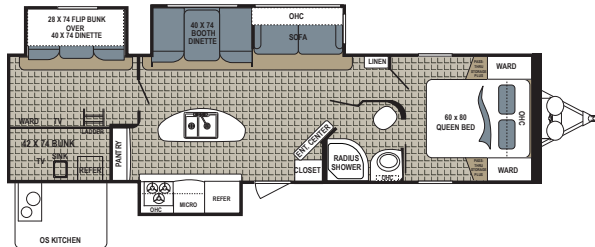
### KODIAK | 279RBSL

Ext. Length: **30' 8"** Ext. Height: **10' 10"** Average Shipping Weight: **6,088** Sleeps: **3-5**



### KODIAK | 291RESL

Ext. Length: **32' 9"** Ext. Height: **11' 1"** Average Shipping Weight: **6,660** Sleeps: **4-6**



### KODIAK | 320BHSL

Ext. Length: **36' 9"** Ext. Height: **TBD** Average Shipping Weight: **TBD** Sleeps: **8-9**

## DÉCOR

### MEDALLION



### PLATINUM



### CELEBRATION



### GRAPHITE



## KODIAK ULTIMATE STANDARDS AND OPTIONS

### MANDATORY OPTIONS

2nd A/C prep with 50-amp service (select models)  
14" aluminum rims (15" on select models)  
29" LED flat-screen TV (select models)  
32" LED flat-screen TV (select models)  
39" LED flat-screen TV (291 only)  
Black tank flush  
Heated and enclosed underbelly  
LED power/adjustable awning  
Power tongue jack with docking light  
Radial tires  
Solid-surface countertops with LED lights  
Stainless-steel appliances  
Tri-fold sleeper sofa (select models)  
Ultimate Package  
Kodiak Luxury Package

### EXTERIOR OPTIONS

50-amp service and 2nd A/C prep (279RBSL, 295TBHS, 306BHSL, 320BHSL)  
15,000-BTU A/C in place of 13,500 BU  
Bedroom 13.5-BTU A/C (279RBSL, 295TBHS, 306BHSL, 320BHSL)  
CSA construction and seal  
Power stabilizer jacks  
Swing-out Coleman grill  
State seal  
Winterization (mandatory October-April)

### INTERIOR OPTIONS

Free-standing dinette in place of booth (252, 279 and 291)  
Residential recliner upgrade (252 and 291)

### ULTIMATE PACKAGE

6 cu. ft. double-door stainless steel refrigerator  
6-gal/ gas/electric DSI water heater  
12V bath exhaust fan  
20-lb. propane bottles with cover  
13,500-BTU ducted A/C  
Adjustable power awning with LED lights  
AM/FM/CD/DVD stereo with bluetooth  
Bear Cave storage  
Bedroom TV hookup with backer  
Cable TV hookup with booster  
Central control station  
Diamond-plate front rock guard  
E-Z Lube axles  
Exterior spray port  
Fire extinguisher  
Dark-tinted, safety-glass window  
Front and rear stabilizer jacks

### High-output furnace

High-rise pull-out faucet and sink cover  
Kitchen and bath skylight  
Beauflor wood plank-style flooring  
Large folding grab handle  
Propane quick disconnect  
Medicine cabinet with mirror  
Microwave  
Night shades throughout  
Outside speakers  
Porcelain toilet  
Range hood with 12v fan/light  
Slam latch baggage doors  
Smoke, propane leak, carbon monoxide detectors  
Spare tire, carrier and cover  
Stainless-steel, 3-burner range top with oven  
Tri-chromatic fiberglass  
Tub surround

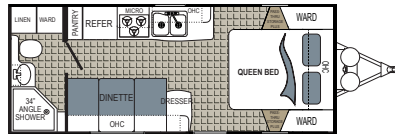
## KODIAK ULTIMATE SPECIFICATIONS

DIMENSIONS				WEIGHTS (LBS.)			TANKS (GALS.)		
FLOORPLAN	*EXTERIOR TRAVEL LENGTH	EXTERIOR WIDTH	EXTERIOR HEIGHT (WITH A/C)	**AVERAGE SHIPPING WEIGHT	DRY HITCH WEIGHT	CARGO CARRYING CAPACITY	***FRESH WATER CAPACITY	GREY WATER CAPACITY	BLACK WATER CAPACITY
240BHSL	27'	96"	10' 10"	5,049	606	1,551	52	39	28
252RLSL	28' 10"	96"	10' 10"	5,100	521	1,500	52	39	28
279RBSL	30' 8"	96"	10' 10"	6,088	792	1,512	52	67	28
291RESL	32' 9"	96"	11' 1"	6,660	733	2,240	52	56	28
295TBHS	33' 3"	96"	10' 10"	5,882	726	1,570	52	39	28
306BHSL	34' 10"	96"	11'	6,646	996	914	52	67	28
320BHSL	36' 9"	96"	TBD	TBD	TBD	TBD	52	67	28

\*Length is defined as the distance from the centerline of hitch pin/coupler to rear bumper of trailer. \*\*Our weights represent how most units are built, inclusive of many commonly-ordered options. \*\*\*Fresh water capacity includes water heater capacity.

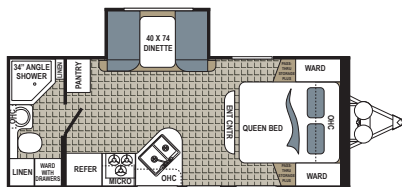
**DISCLAIMER:** Product information is as accurate as possible as of the date of brochure publication. All features, floorplans and specifications in this brochure are subject to change without notice. Please consult Dutchmen's website at [www.Dutchmen.com](http://www.Dutchmen.com) for current product information and specifications. Tow Vehicle Disclaimer. **CAUTION:** Owners of Dutchmen recreational vehicles are solely responsible for the selection and proper use of tow vehicles. All customers should consult with a motor vehicle manufacturer or their dealer concerning the purchase and use of suitable tow vehicles for Dutchmen products. Dutchmen disclaims any liability or damages suffered as a result of the selection, operation, use or misuse of a tow vehicle. DUTCHMEN'S LIMITED WARRANTY DOES NOT COVER DAMAGE TO THE RECREATIONAL VEHICLE OR THE TOW VEHICLE AS A RESULT OF THE SELECTION, OPERATION, USE OR MISUSE OF THE TOW VEHICLE. REFERENCE DUTCHMEN MANUFACTURING OWNERS MANUAL FOR LIMITED WARRANTY DETAILS.





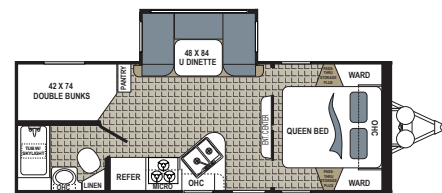
### KODIAK EXPRESS | 201QB

Ext. Length: **23' 10"** Ext. Height: **10' 3"**  
Average Shipping Weight: **3,803** Sleeps: **2-4**



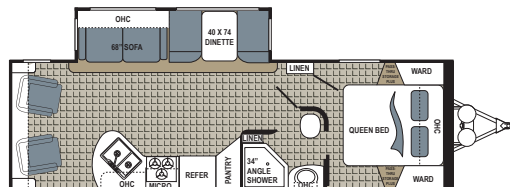
### KODIAK EXPRESS | 223RBSL

Ext. Length: **25' 9"** Ext. Height: **10' 8"**  
Average Shipping Weight: **4,300** Sleeps: **2-4**



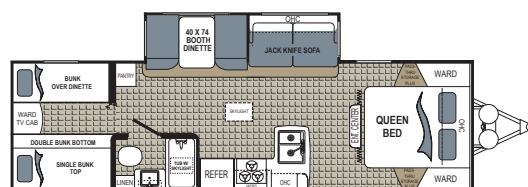
### KODIAK EXPRESS | 246BHSL

Ext. Length: **27'** Ext. Height: **10' 9"**  
Average Shipping Weight: **4,922** Sleeps: **2-4**



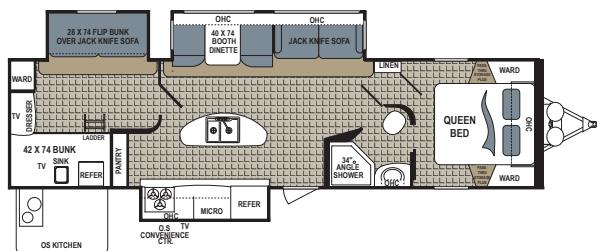
### KODIAK EXPRESS | 264RLSL

Ext. Length: **30' 10"** Ext. Height: **10' 7"** Average Shipping Weight: **5,560** Sleeps: **2-4**



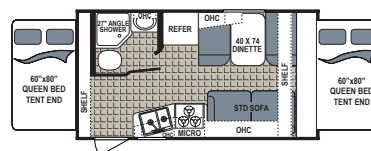
### KODIAK EXPRESS | 283BHSL

Ext. Length: **32'** Ext. Height: **10' 7"** Average Shipping Weight: **5,401** Sleeps: **6-8**



### KODIAK EXPRESS | 303BHSL

Ext. Length: **36' 8"** Ext. Height: **10' 11"** Average Shipping Weight: **7,353** Sleeps: **6-8**



### KODIAK EXPANDABLE | 172E

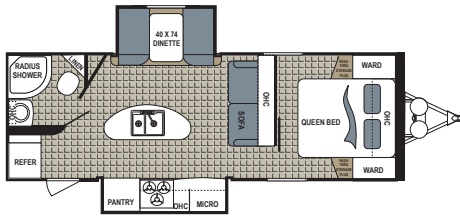
Ext. Length: **18' 6"** Ext. Height: **10'** Average Shipping Weight: **3,161** Sleeps: **4-6**

## KODIAK EXPRESS SPECIFICATIONS

DIMENSIONS					WEIGHTS (LBS.)			TANKS (GALS.)		
MODEL	FLOORPLAN	*EXTERIOR TRAVEL LENGTH	EXTERIOR WIDTH	EXTERIOR HEIGHT (WITH A/C)	**AVERAGE SHIPPING WEIGHT	DRY HITCH WEIGHT	CARGO CARRYING CAPACITY	***FRESH WATER CAPACITY	GREY WATER CAPACITY	BLACK WATER CAPACITY
KODIAK EXPRESS	201QB	23' 10"	96"	10' 3"	3,803	385	1,597	52	39	28
	223RBSL	25' 9"	96"	10' 8"	4,300	516	1,700	52	39	28
	246BHSL	27'	96"	10' 9"	4,922	635	1,678	52	39	28
	253RBSL	28' 8"	96"	10' 9"	5,248	718	1,275	52	39	28
	255BHSL	28' 5"	96"	10' 7"	4,783	526	1,817	52	39	28
	264RLSL	30' 10"	96"	10' 7"	5,560	667	2,040	52	39	28
	283BHSL	32'	96"	10' 7"	5,401	756	1,199	52	39	28
	286BHSL	31'	96"	10' 10"	5,353	743	2,247	52	78	28
	299BHSL	34' 10"	96"	10' 9"	6,320	759	1,280	52	39	28
	303BHSL	36' 8"	96"	10' 11"	7,353	808	1,547	52	67	28
EXPANDABLES	172E	18' 6"	96"	10'	3,161	284	689	52	39	28
	186E	20' 5"	96"	10'	3,567	357	1,433	52	39	28
	206ES	24' 6"	96"	10' 1"	4,278	566	2,322	52	39	28
	222ES	25' 11"	96"	9' 11"	4,508	605	2,092	52	39	28

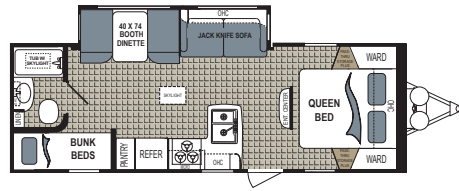
\*Length is defined as the distance from the centerline of hitch pin/coupler to rear bumper of trailer. \*\*Our weights represent how most units are built, inclusive of many commonly-ordered options. \*\*\*Fresh water capacity includes water heater capacity.





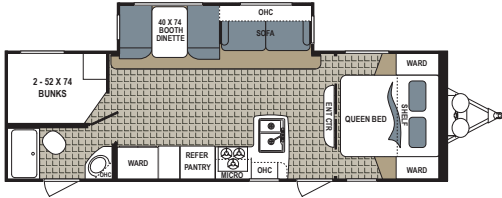
### KODIAK EXPRESS | 253RBSL

Ext. Length: **28' 8"** Ext. Height: **10' 9"** Average Shipping Weight: **5,248** Sleeps: **2-4**



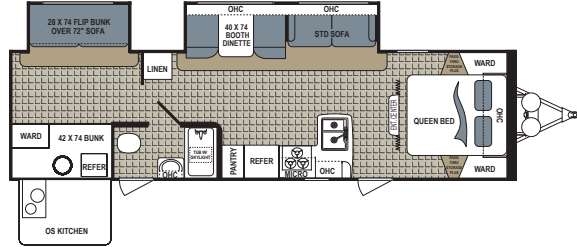
### KODIAK EXPRESS | 255BHS

Ext. Length: **28' 5"** Ext. Height: **10' 7"** Average Shipping Weight: **4,783** Sleeps: **4-6**



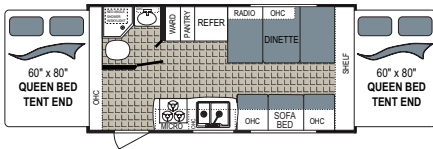
### KODIAK EXPRESS | 286BHS

Ext. Length: **31'** Ext. Height: **10' 10"** Average Shipping Weight: **5,353** Sleeps: **6-8**



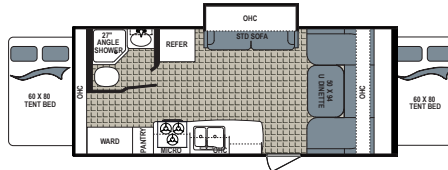
### KODIAK EXPRESS | 299BHS

Ext. Length: **34' 10"** Ext. Height: **10' 9"** Average Shipping Weight: **6,320** Sleeps: **6-8**



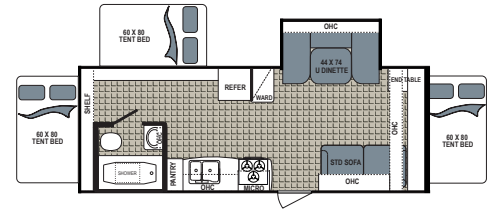
### KODIAK EXPANDABLE | 186E

Ext. Length: **20' 5"** Ext. Height: **10'**  
Average Shipping Weight: **3,567** Sleeps: **4-6**



### KODIAK EXPANDABLE | 206E

Ext. Length: **24' 6"** Ext. Height: **10' 1"**  
Average Shipping Weight: **4,278** Sleeps: **4-6**



### KODIAK EXPANDABLE | 222E

Ext. Length: **25' 11"** Ext. Height: **9' 11"**  
Average Shipping Weight: **4,508** Sleeps: **6-8**

## KODIAK EXPRESS STANDARDS AND OPTIONS

#### MANDATORY OPTIONS

Black tank flush  
Express Package  
Heated and enclosed underbelly  
LED power awning  
Radial tires  
Stainless-steel appliances

#### EXTERIOR OPTION

14" aluminum rims (15" on 303BHS)  
15,000-BTU A/C in place of 13,500 BTU  
50-amp service (264RLS, 283BHS, 286BHS, 299BHS, 303BHS)  
Bedroom 13,500-BTU A/C (264RLS, 283BHS, 286BHS, 299BHS, 303BHS)  
Power tongue jack  
Power stabilizer jacks

#### INTERIOR OPTIONS

24" LED TV  
Tri-fold sleeper sofa  
**EXPRESS PACKAGE**  
3-burner range top with oven  
6 cu. ft. stainless steel double-door refrigerator  
6-gal. gas/electric DSI water heater  
12V bath exhaust fan  
13,500-BTU ducted a/c  
Adjustable power awning  
AM/FM/CD/DVD stereo  
Bedroom TV hookup with backer  
Bear Cave storage  
Black tank flush  
Cable TV hookup with booster

Central control station  
Diamond-plate front rock guard  
Dark tinted safety glass windows  
Dual 20-lb. propane bottles with cover  
E-Z Lube axles  
Exterior spray port  
Foot-flush toilet  
Fire extinguisher  
Front and rear stabilizer jacks  
Full-color oyster exterior  
High-output furnace  
High-spout faucet  
Kitchen and bath skylight  
Large folding grab handle  
Beauflor large tile flooring  
Medicine cabinet with mirror

Microwave  
Night shades throughout  
Outside speakers  
Oversized baggage doors  
Patio light  
Range hood with 12v fan/light  
Smoke, propane leak, carbon monoxide detectors  
Spare tire and carrier  
Tub surround  
TV antenna

**DISCLAIMER:** Product information is as accurate as possible as of the brochure publication date. All features, floorplans and specifications in this brochure are subject to change without notice. Please consult Dutchmen's website at [www.Dutchmen.com](http://www.Dutchmen.com) for current product information and specifications. Tow Vehicle Disclaimer. **CAUTION:** Owners of Dutchmen recreational vehicles are solely responsible for the selection and proper use of tow vehicles. All customers should consult with a motor vehicle manufacturer or their dealer concerning the purchase and use of suitable tow vehicles for Dutchmen products. Dutchmen disclaims any liability or damages suffered as a result of the selection, operation, use or misuse of a tow vehicle. DUTCHMEN'S LIMITED WARRANTY DOES NOT COVER DAMAGE TO THE RECREATIONAL VEHICLE OR THE TOW VEHICLE AS A RESULT OF THE SELECTION, OPERATION, USE OR MISUSE OF THE TOW VEHICLE. REFERENCE DUTCHMEN MANUFACTURING OWNERS MANUAL FOR LIMITED WARRANTY DETAILS.



# LIGHT ON WEIGHT

# HEAVY ON FEATURES



## Dutchmen—A North American Campground Classic

Few manufacturers have built RVs for 25+ years, and only one has set the standard for innovation AND value. Dutchmen **IS** "A North American Campground Classic."



## Dutchmen®

*Legendary Innovation. Trailblazing Value.*

# MORE STANDARD FEATURES MORE VALUE

Dutchmen RVs turn more heads on the lot and in the campground than any other. Why? While other manufacturers offer features as options, Dutchmen tends to make those same features standard. Call it "bang for the buck," "more for your money," or simply "more value." **We've built a reputation for bringing RV owners more standard features for less money** for more than 25 years ... and it's a reputation we plan to keep.

# 300

## STRONG

### NATION WIDE DEALER NETWORK

More than 300 Dutchmen dealers across North America and our industry-leading service center in Goshen, Indiana, combine for your peace of mind before, during and after the sale. Rest assured no matter where your travels take you, **the best-resourced RV manufacturing company in the world is behind you all the way.**

PO BOX 2000 • 2164 Caragana Court  
Goshen, Indiana 46527 Sales: 574.537.0600  
[www.dutchmen.com](http://www.dutchmen.com)

At Dutchmen, quality is our standard. **Every single Dutchmen RV that comes off the line receives its own pre-delivery inspection.** Typically, a competitor performs random inspections, meaning you won't find this commitment to quality anywhere else.



Scan this QR Code for a  
**360° view**  
of the Kodiak interior.



**[www.dutchmen.com](http://www.dutchmen.com)**

Visit us online to see all of the Dutchmen brands, innovative models and spacious floorplans.

Your local dealer

Budget RV Outlet of Buffalo  
4817 Lake Ave.  
Blasdell, NY 14219  
716-685-3546  
[www.budgetrvoutlet.com](http://www.budgetrvoutlet.com)

From giving advice to servicing products, we consider our loyal dealers the best resource for learning about Dutchmen products.

KOD-HM0216-30k