

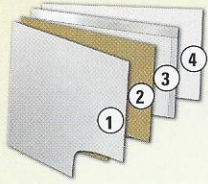
Trail-Sport

BY R-VISION



Expand Your Adventure

Expandables

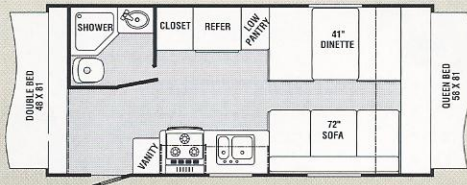


Sidewall Laminate

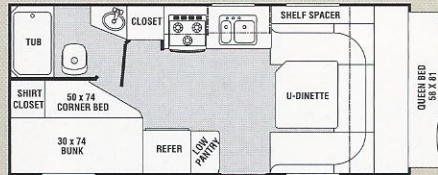
1. Fiberglass Skin - dent resistant, low maintenance
2. Luan
3. Aluminum Frame and Foam
4. Wallboard



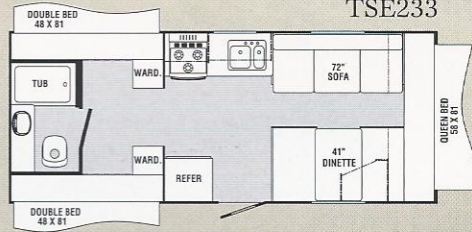
TSE191



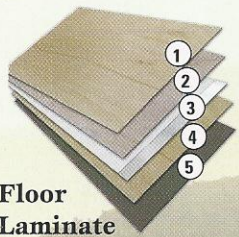
TSE21RBH



TSE233



* Weights are approximate and based on standard features, optional equipment not included.



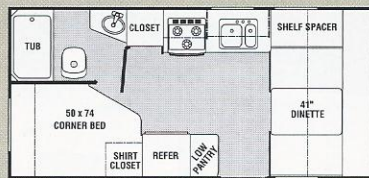
Floor Laminate

1. Luan
2. Luan
3. Aluminum Frame and Foam
4. Luan
5. Darco

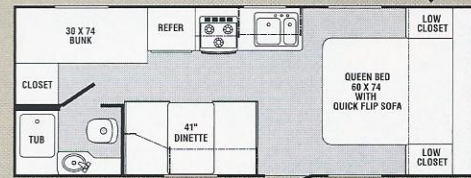
Travel Trailers



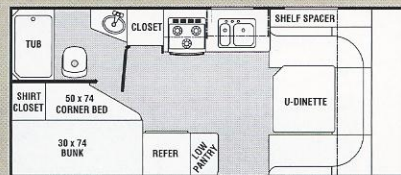
TS19RDB



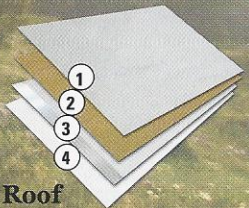
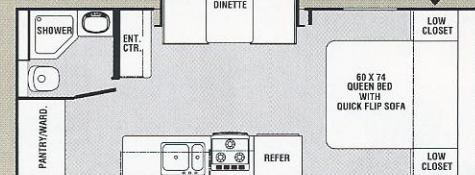
TS24BH



TS21RBH



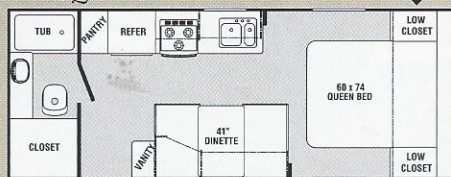
TS24DS



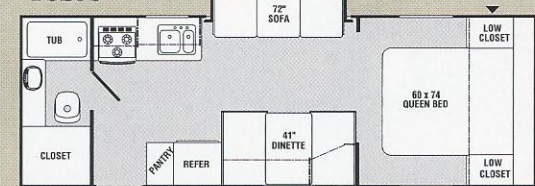
Roof Laminate

1. Rubber Roof
2. Luan
3. Aluminum Frame and Foam
4. Ceiling Board

TS22QB

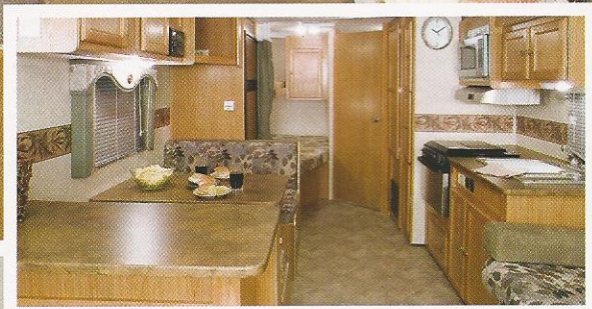


TS25S



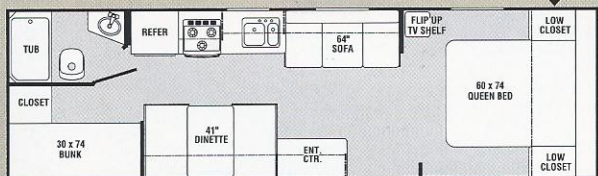


Moss Interior Shown

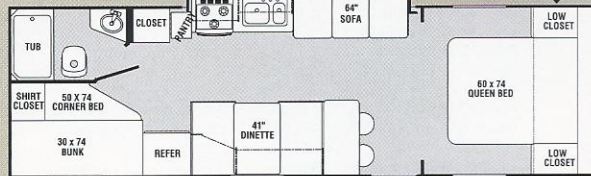


▼ Pass-Thru Storage

TS27FQ



TS27QBSS



Air Conditioning Unit

Travel Trailers	TS19RDB	TS21RBH	TS22QB	TS24BH	TS24DS	TS25S	TS27FQ	TS27QBSS
Length	21' 2"	22' 5"	23' 11"	25' 6"	25' 5"	27' 10"	31' 7"	31' 8"
Width (w/o Awning)	96"	96"	96"	96"	96"	96"	96"	96"
Height (w/AC)	9' 9"	9' 9"	9' 9"	9' 9"	9' 9"	9' 9"	9' 9"	9' 9"
Load Cap.	3088	3048	2638	2664	2368	2332	2220	1792
*Hitch Dry Wt. (Appr.)	277	351	219	321	428	280	326	393
*Axle Dry Wt. (Appr.)	2512	2552	2962	2936	3232	3268	3380	3808
*Total Dry Wt.	2789	2903	3181	3257	3660	3548	3706	4201
GVWR	5877	5951	5819	5921	6028	5880	5926	5993
Fresh Water Tank Cap.	30	30	30	30	30	30	30	30
Grey Water Cap.	30	30	30	30	30	30	30	30
Black Water Cap.	30	30	30	30	30	30	30	30
Tire Size	ST205/ 75R14C	ST205/ 75R14C	ST205/ 75R14C	ST205/ 75R14C	ST205/ 75R14C	ST205/ 75R14C	ST205/ 75R14C	ST205/ 75R14C

* Weights are approximate and based on standard features, optional equipment not included.

Standards & Options

Appliances/Equipment

- Refrigerator, Flush Mount
- 3 Burner Range Top
- Power Range Hood with Light
- Six Gallon Gas Water Heater
- 20,000 BTU Furnace
- Demand Water Pump
- Laminated Countertops
- Double Bowl Kitchen Sink
- Copper LP Gas Lines - Double Flared
- Color Coded Water Lines
- Water Heater Bypass Kit

Bath

- ABS Tub or Shower Pan
- Shower Curtain with Tieback
- Thetford Toilet
- Power Roof Vent
- Adjustable Shower Head
- Sink and Faucet
- Medicine Cabinet with Mirror
- Sky Lights

Construction

- Welded, Aluminum Framed, Laminated Roof with 1-1/2" Polystyrene Block Foam Insulation (R-7), Rubber Roof
- Welded, Aluminum Framed, Laminated Walls with Polystyrene Block Foam Insulation, Fiberglass Exterior Covering
- Welded, Aluminum Framed, Laminated Floor with 1-1/2" Polystyrene Block Foam Insulation (R-7)
- Butyl Tape on Exterior Seams and

- Double Sealant
- Framed, Braced and Wired for Air Conditioning
- Rotocast Holding Tanks
- Rotocast Fresh Water Tank

Electrical

- Patio Light with Amber Lens
- Ceiling Lights
- 120 Volt GFI Protected Circuit(s)
- 120 Volt Breaker Panel
- Outside 120 Volt Receptacle
- 30 Amp, 28' Power Cord
- 55 Amp Converter with Charger
- Battery Rack
- Pre-Wired for Microwave

Exterior

- Rubber Roof
- Fiberglass Skin
- Clean Bond Painted Chassis
- Radius Windows
- Radius Entry Door with Window, Deadbolt Lock and Screen Door
- Outside Storage Compartment
- Self-Storing Step
- 20# LP Tanks
- 2-5/16" Coupler
- Radius Baggage Door

Interior

- Galley Window
- Vinyl Back Dinette and Bunk Cushions
- Valances
- Mini Blinds
- No-Wax Vinyl Flooring

- Roof Vent in Living Area (Deleted with Optional Air Conditioning Some Models)
- Power Roof Vent in Bath
- Inside - Outside Table (TS19RDB, TS21RBH, TSE21RBH)
- New Interior Lighting Switch

Bed Ends

- Weathershield Tent (Attached Inside C-channel to Prevent Water Entry)
- Continuous Piano Hinge for Added Strength
- Key Locked for Security
- Compression Clamps Ensure Tight Bond of Bunk Seals
- 6" Bunk End Cushions for Comfort
- Pre-wired for Bunk Lights

Running Gear

- 14" Trailer Tires
- White Spoked Wheels
- Tandem Axles
- 10" Electric Brakes, All Wheels
- Galvanized Wheel Wells
- E-Z Lube Hubs

Safety

- Break-A-Way Switch
- Fire Extinguisher
- Smoke Detector
- LP Detector
- Safety Chains
- Ground Fault Protected Circuit(s)
- Dead Bolt Door Lock

General Warranty Information

- Rubber Roof 12 Yrs.
- Fiberglass Skin 2 Yrs.
- Painted Chassis 1 Yr.
- Structure 2 Yrs.
- Suspension System 1 Yr.
- General Camper Coverage 1 Yr.
- Norco Slideout Mechanism 2 Yrs.
- Atwood Appliances 2 Yrs.
- Norcold Appliances 3 Yrs.
- Weathershield Tent 5 Yrs.

Options

Approx. Wt. (lbs.)

- Air Conditioning, 13,500 BTU 104
- Air Conditioning, 15,000 BTU 110
- AM/FM CD Player 4
- Awning, A & E 40-60
- Swivel Rocker Chair 35
- Microwave 30
- Oven 30
- Spare Tire & Wheel 35
- Stabilizer Jacks (Four) 24
- TV Antenna/Cable/Satellite Ready 6
- Roof Ladder 5
- Outside Grill 15
- Outside Shower 3
- Outside Sliding Drawer 36
- Sink Cover 1
- Stove Cover 1
- Tub Surround 10
- Double Entry Step 7
- Chrome Trim Rings w/Cap 3
- Fan-Tastic Fan 15
- 2 Bar Stools 20

Towing Guide

VEHICLE	ENGINE	TOW LIMIT	Dakota CC 2WD	4.7L V-8	5500	Jeep			Pathfinder	4.0L V-6	6000
Acura			Durango 4WD	4.7L V-8	7200	Commander 4WD	5.7L V8	7200	Quest	3.5L V-6	3500
MDX	3.5L V-6	4500/3500	Durango 4WD	5.7L V-8	7150	Grand Cherokee	5.7L V8	7200	Titan KC	5.6L V-8	9400
Buick			Magnum	5.7L V-8	3800	Liberty 4WD	2.4L I-4	2000	Xterra	4.0L V-6	5000
Rainier RWD	4.2L I-6	6300	Ram 1500 Reg Cab SB 2WD	4.7L V-8	6650	Wrangler	4.0L I-6	2000	Pontiac		
Rendezvous	3.5L V-6	3500	Ram 1500 Reg Cab SB 2WD	5.7L V-8	8000	Kia			Montana	3.5L V-6	3500
Terraza	3.9L V-6	3500	Ram 2500 QC SB 4WD	5.9L TD	13,000	Sorento	3.5L V-6	3500	Torrent	3.4L V-6	3500
BMW			3500 QC LB DRW 4WD	5.9L TD	15,400	Land Rover			Porsche		
X3 3.0i	3.0L I-6	3500	Ford			Freelander	2.5L, V6	2500	Cayenne	All	7716
X5 4.8is	4.8L V-8	6000	Ranger SC Short Box, 2WD	4.0L V-6	5860	Range Rover Sport	All	7716	Saab		
Cadillac			Ranger SC Short Box, 4WD	4.0L V-6	5580	Lexus			9-7X	5.3L V8	6500
Escalade AWD	6.0L V-8	8100	Escape	3.0L V-6	3500	RX330	3.3L V-6	3500	Subaru		
SRX	4.6L V-8	4250	Explorer 4WD, six pass.	4.6L V-8	7050	GX 470	4.7L V8	6500	B9 Tribeca	F-6	3500
Chevrolet/GMC			Expedition 4WD	5.4L V-8	8600	Lincoln-Mercury			Forrester	F-4	2400
Colorado/Canyon			Explorer Sport Trac 4WD	4.0L V-6	5080	Mark LT 4WD	5.4L V8	8600	Suzuki		
Ext. Cab 2WD	3.5L I-5	3600/4000	F150 Reg Cab LWB 2WD	5.4L V-8	8800	Mariner	3.0L V6	3500	Grand Vitara	2.7L V6	3000
Equinox	3.4L V-6	3500	F150 SuperCrew LWB 4WD	5.4L V-8	9100	Mountaineer AWD 5 pass.	4.6L V8	7060	XL-7	2.7L V6	3000
Uplander	3.5L V-6	3500	F350 SC DRW 4WD	6.8L V-10	15,000	Navigator 4WD	5.4L V8	8300	Toyota		
Avalanche 1500 4WD	5.3L V-8	7100	F350 CC DRW 4WD	6.0L TD	18,100	Mazda			4Runner 4WD	4.7L V-8	7000
Avalanche 2500 4WD	8.1L V-8	1200	Honda			B4000 4WD	4.0L V-6	5580	Highlander	2.4L I-4	3000
1500 Reg Cab SWB 2WD	5.3L V-8	8400	Odyssey	3.5L V-6	3500	Tribute	3.0L V-6	3500	Highlander Hybrid	3.3L V6	3500
2500 CC SWB 4WD	6.6L TD	12,000/14,200	Pilot	3.5L V-6	3500/4500	Mercedes-Benz			Land Cruiser	4.7L V8	6500
3500 CC SRW 4WD	8.1L V-8	12,000/15,000	Ridgeline	3.5L V-6	5000	G-500	V-8	7842	Sienna	3.3L V6	3500
3500 CC DRW 4WD	6.6L TD	12,000/16,000	Hummer			ML 500	V-8	7842	Sequoia 4WD	4.7L V8	6200
Tahoe/Yukon 4WD	5.3L V-8	7900	H2	6.0L V-8	6700	Mitsubishi			Tacoma Access Cab	4.0L V6	6500
Suburban/Yukon XL 4WD	5.3L V-8	8200	H3	3.5L I-5	4500	Endeavor	3.8L V-6	3500	Tundra Reg Cab 2WD/4WD	4.7L V8	7100
Suburban/Yukon XL 4WD	8.1L V-8	10,300	Hyundai			Montero	3.8L V-6	5000	Touareg	All	7716
Trailblazer/Envoy SWB 4WD	5.3L V-8	6600/6500	Santa Fe 2WD pass.	3.5L V-6	3000	Raider Ext Cab 2WD	4.7L V-8	5400	S80	2.5L I-5	3300
Daimler Chrysler			Infiniti			Raider Ext Cab 4WD	3.7L V-6	3950	XC90	All	5000
T & C,			FX	All	3500	Nissan			<i>Listed above are tow ratings that are the highest available for the respective 2006 models. Certain optional equipment may be required and other restrictions may apply. Check with your automotive dealer for exact specifications.</i>		
Caravan/Grand Caravan	3.3L V-6	3600	OX56 AWD	5.6L V-8	8900	Armada 4WD	5.6L V-8	9000			
T & C,			Isuzu			Frontier					
Caravan/Grand Caravan	3.8L V-6	3800	Ascender 7 pass. 4WD	5.3L V-8	8200	KC SE, LE, Nismo 4WD	4.0L V-6	6300			
			1350 Crew Cab P/U	3.5L I-5	4000	Murano	3.5L V-6	3500			

Colton RV & Marine
3122 Niagara Falls Blvd.
North Tonawanda, NY 14120
(716) 694-0188
www.ColtonRV.com

Colton RV
489 Bushkill Plaza LN #9669
Wind Gap, PA 18091
(610) 863-5239
www.ColtonRV.com

R-Vision, Inc.
2666 S. Country Club Drive
Warsaw, IN 46580
574.268.2111
www.trail-lite.com

As R-Vision constantly strives to improve our product, all specifications listed in this informative brochure are subject to change without notice or obligation. Photos may show optional equipment which is not included in the purchase price of the unit. Test drive and review a current model on your dealer's lot today.
R-80-054 2006 R-Vision, Inc. Litho U.S.A.