



ASPEN TRAIL

TRAVEL TRAILERS




Colton RV & Marine
3122 Niagara Falls Blvd.
North Tonawanda, NY 14120
(716) 694-0188
www.ColtonRV.com

Colton RV
489 Bushkill Plaza LN #9665
Wind Gap, PA 18091
(610) 863-5239
www.ColtonRV.com

Make Every Journey Your Own



Dutchmen[®]
THE SOUL OF RVING



**Each new day brings wonderment. The
opportunity to discover something new.
To pursue your dreams and fill your soul.
This is the Soul of RVing.**

MORE STANDARD FEATURES MORE VALUE

Everything we put into our innovative floorplans are designed to maximize storage and comfort. We don't stop there, to ensure peace of mind after the purchase we have the industry's best RV warranty, 100% pre-delivery inspection, and the leader in parts and service. While other manufacturers offer features as options, we prefer to make those same features standard.

We've built a reputation for bringing RV owners more standard features for less money for over 25 years, and it's a reputation we plan to keep.



100% Pre-Delivery Inspection

At Dutchmen, quality is standard. Every single RV that comes off the line receives it's own pre-delivery inspection—a thorough 253-point check to ensure accurate measurements, as well as fully-functional electronics and components.



The Industry's Best RV Warranty

Our industry-best 3 Year Warranty means you don't have to wrangle over the details. We deliver value by clearly outlining the major components we back for the first three years.



The Leader In Parts & Service

Replacement parts. Routine checkups. Expert advice. We've got it all covered. When only the best RV services will suffice, our industry-leading parts and service department is ready to help you get back on the road—and stay there longer than ever before.

Tow Vehicle Disclaimer. CAUTION: Owners of Dutchmen recreational vehicles are solely responsible for the selection and proper use of tow vehicles. All customers should consult with a motor vehicle manufacturer or their dealer concerning the purchase and use of suitable tow vehicles for Dutchmen products. Dutchmen disclaims any liability or damages suffered as a result of the selection, operation, use or misuse of a tow vehicle. DUTCHMEN'S LIMITED WARRANTY DOES NOT COVER DAMAGE TO THE RECREATIONAL VEHICLE OR THE TOW VEHICLE AS A RESULT OF THE SELECTION, OPERATION, USE OR MISUSE OF THE TOW VEHICLE. REFERENCE DUTCHMEN MANUFACTURING OWNERS MANUAL FOR LIMITED WARRANTY DETAILS. © 2021 Dutchmen 10-17-2021-ASPEN TRAIL. MY 2022



CONNECTION



Destination: Aspen Trail has the most dynamic range of floorplan options to fit any camping style. With more standard features than its competitors and a focus on quality, value, and design, Aspen Trail delivers the best RV in its class. Whether your trail leads across this great country or simply a staycation, the Aspen Trail is your basecamp.

- **Aspen Trail Power Package** - Aspen Trail Power Stabilizers, Power Awning and Power Tongue Jack make setting up and breaking down your campsite a breeze.
- **Fully Enclosed Underbelly** - all of your RVs vital functions are kept out of the elements. Plus, this extra layer of protection means you can travel further into the year.
- **Aluminum Steps** - stability you need when coming and going from your Aspen Trail. Easy to expand and store away, these aluminum steps deliver a sound platform.



Standard features in every floor plan.



Power Stabilizer Jacks



Power Tongue Jack



Fireplace



Dual 20lb Propane Tanks



Residential Queen Bed



Backup Camera Prep



Prepped for WIFI 4G LTE

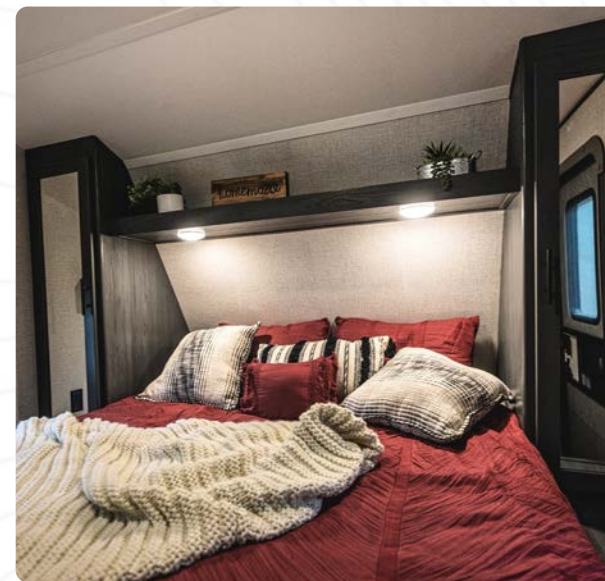


Solar Prep



A woman with dark hair tied back, wearing a green zip-up sweater and sunglasses on her head, is smiling and slicing lemons on a wooden cutting board. She is in a modern interior with large windows and a dark door in the background. The scene is lit with warm, indoor lighting.

**FEEL AT HOME FROM THE
FIRST MOMENT.**



Interior Features:

With spacious floor plans and all the amenities of home,

- 60"x 80" Residential Queen Bed
- Central Command Center
- Upgraded Beauflor Lino
- LED Interior Lighting
- Seamless Countertops
- High Rise Faucet
- 3 Burner Range w/ Oven and Glass Cover
- Microwave
- Stainless Steel Single Bowl Farm Sink
- 10 cu. ft. 12 Volt Refrigerator
- Optional 8 cu. ft. Gas/Electric Refrigerator
- Range Hood w/ Light and Exhaust Fan
- Blackout Roller Shades in Slide Out
- LED Fireplace (Slide Out Models)
- 13,500-BTU A/C (Optional 15K BTU)
- High Output Furnace
- 6 Gallon Gas Water Heater w/ DSI



Titanium



Tungsten



Flooring



Woodgrain



Countertop

Choose how your next adventure unfolds.



ASPEN TRAIL 2260RBS

Length: 26' 11" Weight: 5,664 lbs. Sleeps: 3-4
Hitch: 574 lbs. Height: 11' 3"



ASPEN TRAIL 2550BHS

Length: 29' 6" Weight: 5,930 lbs. Sleeps: 3-4
Hitch: 621 lbs. Height: 11' 3"



ASPEN TRAIL 2790BHS

Length: 32' 1" Weight: 6,620 lbs. Sleeps: 3-4
Hitch: 635 lbs. Height: 11' 3"



ASPEN TRAIL 2850BHS

Length: 32' 11" Weight: 6,720 lbs. Sleeps: 3-4
Hitch: 727 lbs. Height: 11' 3"

*Length is defined as the distance from the centerline of hitch pin/coupler to rear bumper of trailer.

**Our weights represent how most units are built, inclusive of many commonly-ordered options.

***Fresh water capacity includes water heater capacity.

DISCLAIMER: Product information is as accurate as possible as of the date of brochure publication. All features, floor plans and specifications in this brochure are subject to change without notice. Please consult Dutchmen's website at www.Dutchmen.com for current product information and specifications.



All info & specs are for units manufactured after 10/1/2021



ASPEN TRAIL

Choose how your next adventure unfolds.



ASPEN TRAIL 2860RLS

Length: 32' 11" Weight: 6,645 lbs. Sleeps: 3-4
Hitch: 746 lbs. Height: 11' 3"



ASPEN TRAIL 2880RKS

Length: 33' 1" Weight: 6,741 lbs. Sleeps: 3-4
Hitch: 679 lbs. Height: 11' 2"



ASPEN TRAIL 2910BHS

Length: 33' 3" Weight: 6,639 lbs. Sleeps: 3-4
Hitch: 782 lbs. Height: 11' 3"



ASPEN TRAIL 3020BHS

Length: 34' 6" Weight: 7,159 lbs. Sleeps: 3-4
Hitch: 923 lbs. Height: 11' 4"

*Length is defined as the distance from the centerline of hitch pin/coupler to rear bumper of trailer.

**Our weights represent how most units are built, inclusive of many commonly-ordered options.

***Fresh water capacity includes water heater capacity.

DISCLAIMER: Product information is as accurate as possible as of the date of brochure publication. All features, floor plans and specifications in this brochure are subject to change without notice. Please consult Dutchmen's website at www.Dutchmen.com for current product information and specifications.



All info & specs are for units manufactured after 10/1/2021

Choose how your next adventure unfolds.



ASPEN TRAIL 3120BHS

Length: 35' 1" Weight: 6,872 lbs. Sleeps: 3-4
Hitch: 868 lbs. Height: 11' 3"



ASPEN TRAIL 3210BHDS

Length: 36' 10" Weight: 7,794 lbs. Sleeps: 3-4
Hitch: 1,061 lbs. Height: 11' 4"



ASPEN TRAIL 3230BHS

Length: 36' 3" Weight: 8,034 lbs. Sleeps: 3-4
Hitch: 992 lbs. Height: 11' 6"



ASPEN TRAIL 3280BHS

Length: 36' 3" Weight: 7,089 lbs. Sleeps: 3-4
Hitch: 936 lbs. Height: 11' 6"

*Length is defined as the distance from the centerline of hitch pin/coupler to rear bumper of trailer.

**Our weights represent how most units are built, inclusive of many commonly-ordered options.

***Fresh water capacity includes water heater capacity.

DISCLAIMER: Product information is as accurate as possible as of the date of brochure publication. All features, floor plans and specifications in this brochure are subject to change without notice. Please consult Dutchmen's website at www.Dutchmen.com for current product information and specifications.



All info & specs are for units manufactured after 10/1/2021

Aspen Trail Specifications

Floorplan	Weights (lbs)			Tanks (Gallons)			Dimensions	
	Shipping Weight	Hitch Weight	Carrying Capacity	Fresh Water Capacity	Waste Water Capacity	Gray Water Capacity	Exterior Length	Exterior Height
2260RBS	5,664	574	1,936	52	38	38	26' 11"	11' 3"
2550BHS	5,930	621	1,670	52	42	84	29' 6"	11' 3"
2790BHS	6,620	635	2,180	52	42	84	32' 1"	11' 3"
2850BHS	6,720	727	2,080	52	42	84	32' 11"	11' 3"
2860RLS	6,645	746	2,155	52	42	42	32' 11"	11' 3"
2880RKS	6,697	679	2,059	52	42	84	33' 1"	11' 2"
2910BHS	6,639	782	2,161	52	42	42	33' 3"	11' 3"
3020BHS	7,159	923	2,601	52	84	84	34' 6"	11' 4"
3120BHS	6,872	868	1,928	52	42	84	35' 1"	11' 3"
3210BHDS	7,794	1,061	1,886	52	42	42	36' 10"	11' 4"
3230BHS	8,034	992	1,646	52	42	42	36' 3"	11' 6"
3280BHS	7,089	936	1,711	52	42	42	36' 3"	11' 6"

*Length is defined as the distance from the centerline of hitch pin/coupler to rear bumper of trailer.

**Our weights represent how most units are built, inclusive of many commonly-ordered options.

***Fresh water capacity includes water heater capacity.

DISCLAIMER: Product information is as accurate as possible as of the date of brochure publication. All features, floor plans and specifications in this brochure are subject to change without notice. Please consult Dutchmen's website at www.Dutchmen.com for current product information and specifications.



All info & specs are for units manufactured after 10/1/2021

Choose how your next adventure unfolds.



ASPEN TRAIL 1900RBWE
Length: 24' 8" Weight: 4,192 lbs. Sleeps: 3-4
Hitch: 502 lbs. Height: 10' 8"



ASPEN TRAIL 2050QBWE
Length: 24' 10" Weight: 4,356 lbs. Sleeps: 3-4
Hitch: 465 lbs. Height: 10' 6"



ASPEN TRAIL 2150BHWE
Length: 25' 11" Weight: 4,645 lbs. Sleeps: 3-4
Hitch: 515 lbs. Height: 10' 7"



ASPEN TRAIL 2180RDWE
Length: 25' 5" Weight: 4,390 lbs. Sleeps: 3-4
Hitch: 524 lbs. Height: 11' 3"

*Length is defined as the distance from the centerline of hitch pin/coupler to rear bumper of trailer.

**Our weights represent how most units are built, inclusive of many commonly-ordered options.

***Fresh water capacity includes water heater capacity.

DISCLAIMER: Product information is as accurate as possible as of the date of brochure publication. All features, floor plans and specifications in this brochure are subject to change without notice. Please consult Dutchmen's website at www.Dutchmen.com for current product information and specifications.



All info & specs are for units manufactured after 10/1/2021



ASPEN TRAIL

Choose how your next adventure unfolds.



ASPEN TRAIL 2340BHSWE
Length: 27' 8" Weight: 5,601 lbs. Sleeps: 3-4
Hitch: 605 lbs. Height: 11' 3"



ASPEN TRAIL 2390RKSWE
Length: 27' 4" Weight: 5,602 lbs. Sleeps: 3-4
Hitch: 607 lbs. Height: 11' 4"



ASPEN TRAIL 2550BHSWE
Length: 29' 6" Weight: 6,000 lbs. Sleeps: 3-4
Hitch: 650 lbs. Height: 11' 3"



ASPEN TRAIL 2810BHSWE
Length: 32' 6" Weight: 6,418 lbs. Sleeps: 3-4
Hitch: 825 lbs. Height: 11' 4"

*Length is defined as the distance from the centerline of hitch pin/coupler to rear bumper of trailer.

**Our weights represent how most units are built, inclusive of many commonly-ordered options.

***Fresh water capacity includes water heater capacity.

DISCLAIMER: Product information is as accurate as possible as of the date of brochure publication. All features, floor plans and specifications in this brochure are subject to change without notice. Please consult Dutchmen's website at www.Dutchmen.com for current product information and specifications.



All info & specs are for units manufactured after 10/1/2021



ASPEN TRAIL

Choose how your next adventure unfolds.



ASPEN TRAIL 2850BHSWE

Length: 32' 9" **Weight:** 6,613 lbs. **Sleeps:** 3-4
Hitch: 727 lbs. **Height:** 11' 3"



ASPEN TRAIL 2880RKSWE

Length: 33' 1" **Weight:** 6,620 lbs. **Sleeps:** 3-4
Hitch: 706 lbs. **Height:** 11' 2"



ASPEN TRAIL 2860RLSWE

Length: 32' 9" **Weight:** 6,690 lbs. **Sleeps:** 3-4
Hitch: 787 lbs. **Height:** 11' 3"

*Length is defined as the distance from the centerline of hitch pin/coupler to rear bumper of trailer.

**Our weights represent how most units are built, inclusive of many commonly-ordered options.

***Fresh water capacity includes water heater capacity.

DISCLAIMER: Product information is as accurate as possible as of the date of brochure publication. All features, floor plans and specifications in this brochure are subject to change without notice. Please consult Dutchmen's website at www.Dutchmen.com for current product information and specifications.



All info & specs are for units manufactured after 10/1/2021



ASPEN TRAIL

Aspen Trail West Coast Specifications

Floorplan	Weights (lbs)			Tanks (Gallons)			Dimensions	
	Shipping Weight	Hitch Weight	Carrying Capacity	Fresh Water Capacity	Waste Water Capacity	Gray Water Capacity	Exterior Length	Exterior Height
1900RBWE	4,192	502	3,408	52	38	38	24' 8"	10' 8"
2050QBWE	4,356	465	3,244	52	38	38	24' 10"	10' 6"
2150BHWE	4,645	515	2,955	52	38	38	25' 11"	10' 7"
2180RDWE	4,390	524	3,210	52	38	38	25' 5"	11' 3"
2340BHSWE	5,601	605	1,999	52	38	38	27' 8"	11' 3"
2390RKSWE	5,602	598	2,080	52	38	38	27' 4"	11' 4"
2550BHSWE	6,000	607	1,600	52	38	76	29' 6"	11' 3"
2810BHSWE	6,418	825	3,262	52	38	38	32' 6"	11' 4"
2850BHSWE	6,620	706	3,645	52	38	76	32' 9"	11' 3"
2860RLSWE	6,690	787	2,990	52	38	38	32' 9"	11' 3"
2880RKSWE	6,697	939	2,983	52	38	76	33' 1"	11' 2"

*Length is defined as the distance from the centerline of hitch pin/coupler to rear bumper of trailer.

**Our weights represent how most units are built, inclusive of many commonly-ordered options.

***Fresh water capacity includes water heater capacity.

DISCLAIMER: Product information is as accurate as possible as of the date of brochure publication. All features, floor plans and specifications in this brochure are subject to change without notice. Please consult Dutchmen's website at www.Dutchmen.com for current product information and specifications.



All info & specs are for units manufactured after 10/1/2021



ASPEN TRAIL



CRAFTED FOR
YOUR LIFESTYLE



Select floor plans

Exterior Features:

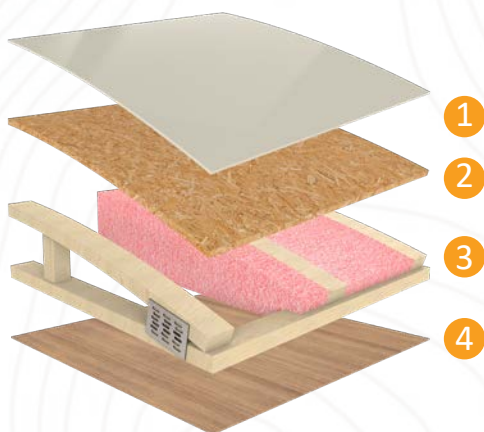
- Backup Camera Prep
- Mega Pass Thru Storage Compartment w/ LED Light
- Radial Tires
- Solar Power Prep
- Aluminum Entry Steps (Main Entry Only)
- Diamond Plate Rock Guard
- Power Awning w/ LED Light
- Black Tank Flush
- Outside Shower
- Power Stabilizers
- Smooth Metal Front End
- Fully Enclosed Underbelly



To see more features,
visit dutchmen.com

See the DUTCHMEN® Construction Advantage.

We put a great amount of thought into every RV we design and build. From strong frames, to sturdy walls and insulation, we build every RV to take you on many adventures to come.

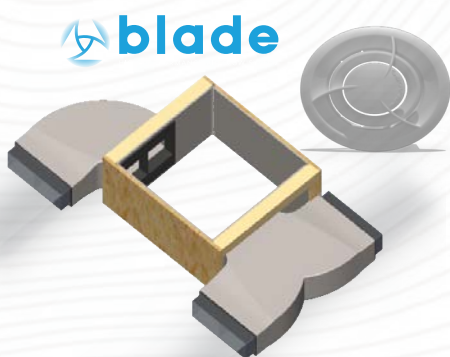
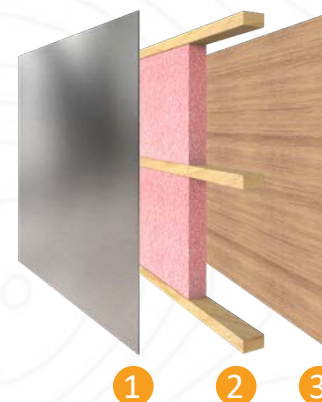


Durable Roof Structure

- 1 TPO Roof
- 2 3/8" Decking
- 3 Fiberglass Insulation
- 4 Lauan Interior Panel

Insulated Structure


- 1 Metal Exterior Panel
- 2 Wood Frame with R7 Thermal Insulation
- 3 Lauan Interior Panel



Blade Air Flow System

This design reduces air turbulence and noise accelerating airflow with duct elbows and wyes that feature enlarged inlets and narrow as they push cooled air from the AC through the length of the ducting.

(On Ducted AC Models Only)

 To see more features, visit dutchmen.com



Make the DUTCHMEN® Connection.

Connect with other RVers in the Dutchmen community. Sharing adventures is a great way to get inspired and get on the road. Gather 'round our social media campfires with us—and be sure to follow us so we can share with you!

dutchmen.com



Visit us online to see all the Dutchmen brands, innovative models, and spacious floor plans.

CONTACT SALES: 574.537.0600

PO BOX 2000 | 2164 CARAGANA COURT | GOSHEN, IN 46527