

BROOKSIDE

by SunnyBrook



THE BEST OF ALL WORLDS



■ ■ ■ *Experience the Best.*

Brookside fifth-wheel and travel trailers are unique in that they combine comfort features and amenities more common to RVs costing much more, with SunnyBrook RV's great reputation for solid value and quality of construction.



Shown in *Elegance Decor*



You are sure to benefit from years of enjoyment as you travel in luxury. And travel with peace of mind knowing a Brookside, by SunnyBrook RV, will hold up down the road. We offer elegant fabrics and color choices, a wide variety of floorplans and, best of all, unsurpassed standard features unique to a Brookside.

The photograph at the top of this page shows just how large and luxurious a Brookside interior is. From its standard stain-resistant fabrics, to solid wood cabinetry and extra tall interior slideout height, Brookside has it all. Bathrooms feature standard porcelain toilets and tub shower surround. Bedrooms are spacious and feature a true queen-sized bed along with quality bedspread and valances with curtains. Your elegant Brookside interiors are built on 5/8" exterior grade plywood decking and I-beam frame—best in the industry!



STANDARDS + OPTIONS

Exterior + Construction

I-Beam Frame	High Illumination Scare Light	Super Lube Axles	Power Front Jacks (FW's only)
Heated and Enclosed Tanks	Large Swing Out Entry Handle	Awning	30" Radius Entry Door
R-7 Insulation	Dual 30lb. LP Tanks w/ Slide Tray	Stabilizer Jacks	Bumper w/ Drain Hose Carrier
Full Walk On Roof	Radius Baggage Doors	56 Gallon Fresh Water Tank	High Gloss Gel Coat Exterior
Rubber Roof	Dual Hitch Safety Chains (TT's only)	Telephone Jack	Z-Frame Chassis Design

Interior

13.5 Ducted Air Conditioner	Water Heater By-Pass	6 Gallon DSI Gas/Electric Water Heater
Ducted Floor Heat	Deep Lipped Overhead Cabinetry	Extra Large Kitchen Countertop
Extra Large Storage	Microwave	2 Year Cabinet Door Warranty
5/8" Plywood Flooring	Oven 21"	LP Leak Detector
Porcelain Foot Flush Toilet	Entertainment Center Cabinet	Metal Drawer Guides
Night Shades	Pull-Out Kitchen Faucet	Carbon Monoxide Detector
Satellite Prep	Under Bed Storage w/ Gas Struts	Poplar Wood Cleats (a true hardwood)
Rebond Carpet Padding	Residential Style Countertop	Bathroom Power Vent
Cable TV Hookup	Oversized Lavatory Sink	Extra Large Booth Dinette
Glass Shower Door (when applicable)	True 5.1 Stereo Surround	60" x 80" Bed
TV Antenna and Booster	AM/FM/DVD 5.1 Entertainment Center	Angled and Stylish Overhead Cabinetry
Tub/Shower Surround	Lumber Core Cabinet Stiles	Wallpaper Border
Double Door Refrigerator	3 Burner Range	Bedspring
Valances w/ Curtains	Screwed Cabinet Frames	E-Z Winterizing System

Optional Equipment

Range Cover	Rear Ladder	Spare Tire	Raised Panel Refrigerator Front
Sink Cover	8 Cu. Ft. Extra Large Refrigerator	Free Standing Table w/ 4 Chairs	Tinted Safety Glass Windows
TV Shelf w/ Jack in Bedroom	Swivel Rocker	Outside Shower	CSA
10 Gallon Gas/Electric DSI Water Heater	Hide-A-Bed Sofa	Recliners	50 AMP Electrical Service (FW Only)
Heat Strip for Air Conditioner in Bedroom (FW Only)	Heat Strip for Air Conditioner in Kitchen	13.5 BTU Ducted Air Conditioner in Bedroom (FW Only)	Bedroom 2nd Air Conditioner (Dual Ducted) Ready (FW Only)
15,000 BTU Air Conditioner	15.0 BTU Ducted Air Conditioner in Bedroom (FW Only)	16" Radial Tires, Aluminum Wheels & Equa Flex Suspension System (FW Only)	16" Aluminum Spare Tire, Carrier & Cover (FW Only)
Aluminum Wheels	Sliding Patio Door (302 FKS Model Only)	12 Volt Power Awning	

For more, see your Brookside dealer for details. Standards, options and specifications are subject to change.



■ Dual 30 lb. LP tanks are standard in this slider compartment. Brookside offers many convenience features others ignore.

■ Extra large storage and radiused baggage doors are standards.

■ Standard gelcoat exterior sidewalls make a Brookside look better and radiused 30" entry door and windows are high-end as well.

■ Residential style countertops and pull-out faucet are standard.

■ Other brands come with cheap plastic toilets. Not a Brookside. We offer standard porcelain foot flush toilets.

FLOORPLANS + SPECIFICATIONS

Travel Trailers

Measurements

	297 BHS	300 RLS	301 RBS	302 FKS	303 SLS	306 RES
Exterior Length*	33'-9"	33'-1"	33'-10"	33'-10"	33'-10"	33'-11"
Exterior Height**	11'-1"	11'-1"	11'-1"	11'-1"	11'-1"	11'-1"
Exterior Width	8'-0"	8'-0"	8'-0"	8'-0"	8'-0"	8'-0"
Interior Height	6'-8"	6'-8"	6'-8"	6'-8"	6'-8"	6'-8"
Hitch Height	20"	20"	20"	20"	20"	20"

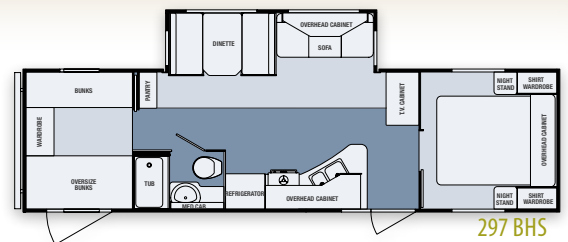
Capacities

Carrying Capacity	2095	2364	1933	1888	2034	1791
Dry Hitch Weight/Lbs.***	1103	905	1194	955	1020	942
Dry Gross Weight/Lbs.***	7381	7112	7543	7588	7442	7652
GVWR/Lbs.	10000	10000	10000	10000	10000	10000
Fresh Water Cap./Gal.	56	56	56	56	56	56
Black Water Cap./Gal.	33	33	33	33	33	33
Gray Water Cap./Gal.	33	33	35	66	66	66
Sleeping Capacity	10	6	6	6	6	4

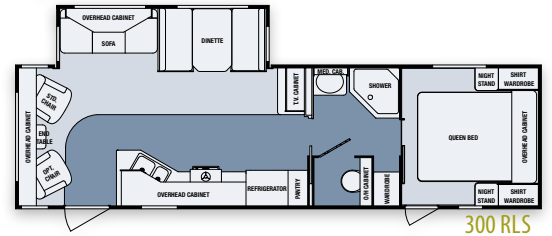
Features

Dual 5200 Lb.	Str. Axles	Str. Axles	Str. Axles	Str. Axles	Str. Axles	Str. Axles
Tire Size	ST225/75D/15D	ST225/75D/15D	ST225/75D/15D	ST225/75D/15D	ST225/75D/15D	ST225/75D/15D
Awning Size	20'	19'	20'	20'	20'	18' Optional
Furnace Size	30M BTU	30M BTU	31M BTU	31M BTU	30M BTU	30M BTU
Dometic Gas/Elec. Refrig.	Double Door	Double Door	Double Door	Double Door	Double Door	Double Door

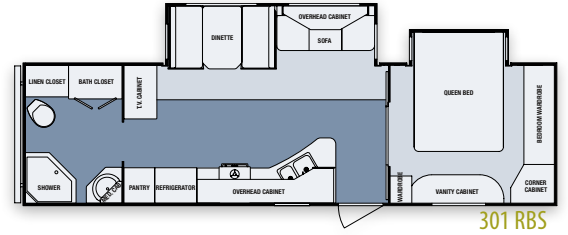
*From center of king pin to rear bumper **Includes AC on roof ***Not including options



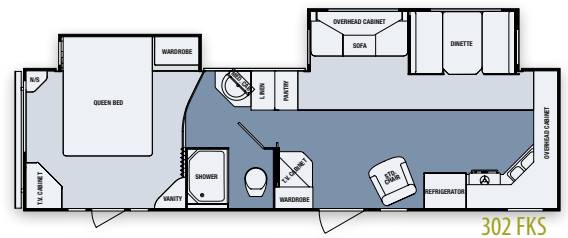
297 BHS



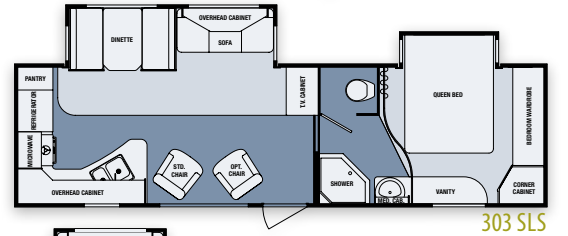
300 RLS



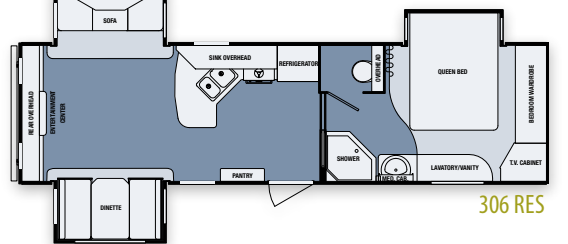
301 RBS



302 FKS



303 SLS



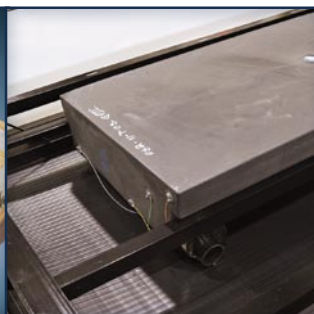
306 RES



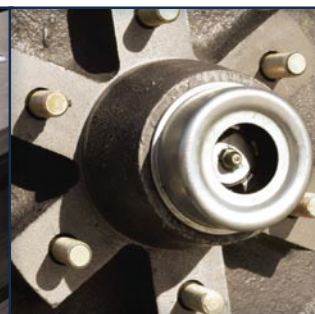
■ This aluminum tread plate (ATP) front stoneguard is standard on travel trailer models. It looks great while keeping road debris down.



■ Real, poplar hardwood (vs. cheap yellow pine) is screwed together to provide the best cabinetry. We use lumber core cabinet stiles too.



■ Heated and enclosed holding tanks (56 gallon fresh!) along with ducted floor heat and solid steel I-beam frame are first class!



■ Beefy, six-lug hubs and Super Lube axles are standard. A Brookside unit is built better and easier to maintain than others.



■ Your Brookside is built better. R-7 insulation and a full walk-on rubber roof are more proof. Check out our aluminum superstructure!

SPECIFICATIONS

Fifth Wheels

Measurements

	275 FWRKS	276 FWSGS	289 FWRLS	290 FWRLS	298 FWRBHS	299 FWRBHS	345 FWSE	346 FWFBS	349 FWSB
Exterior Length*	32'	32'	32'	32'	34'-2"	34'-2"	34'-9"	35'-10"	34'-10"
Exterior Height**	12'-3"	12'-3"	12'-1"	12'-3"	12'-7"	12'-5"	12'-3"	12'-3"	12'-3"
Exterior Width	8'-0"	8'-0"	8'-0"	8'-0"	8'-0"	8'-0"	8'-0"	8'-0"	8'-0"
Interior Height	7'-11"	7'-11"	7'-11"	7'-11"	7'-11"	7'-11"	7'-11"	7'-11"	7'-11"
Hitch Height	45-1/2"	45-1/2"	45-1/2"	45-1/2"	45-1/2"	45-1/2"	45-1/2"	45-1/2"	45-1/2"

Capacities

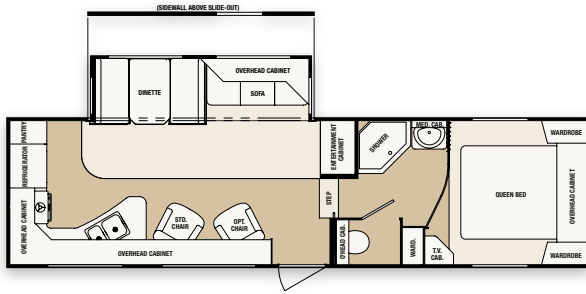
Carrying Capacity	4048	3553	4033	3508	3144	3568	2692	2576	2704
Dry Hitch Weight/Lbs.***	1490	1831	1750	2145	2119	1831	2183	1453	2084
Dry Gross Weight/Lbs.***	8128	8623	8143	8668	9032	8608	9484	9292	9472
GVWR/Lbs.	12700	12700	12700	12700	12700	12700	12700	12700	12700
Fresh Water Cap./Gal.	56	56	56	56	56	56	56	56	56
Black Water Cap./Gal.	33	33	33	33	33	33	33	33	33
Gray Water Cap./Gal.	63	63	63	63	63	63	63	63	63
Sleeping Capacity	6	6	6	6	10	10	6	6	6

Features

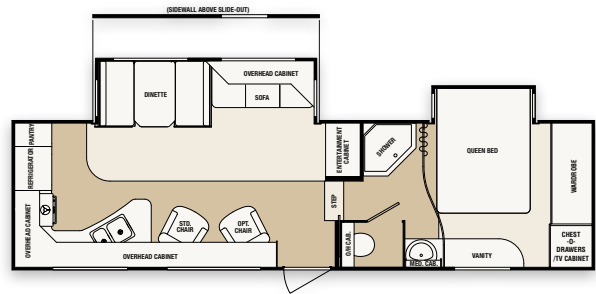
Dual 5200 Lb.	Str. Axles	Str. Axles	Str. Axles	Str. Axles	Str. Axles	Str. Axles	Str. Axles	Str. Axles	Str. Axles
Tire Size	ST225/75D15D	ST225/75D15D	ST225/75D15D	ST225/75D15D	ST225/75D15D	ST225/75D15D	ST225/75D15D	ST225/75D15D	ST225/75D15D
Awning Size	17'	17'	17'	17'	20'	20'	14'	20'	14'
Furnace Size	31M BTU	31M BTU	31M BTU	31M BTU	31M BTU	31M BTU	30M BTU	30M BTU	30M BTU
Dometic Gas/Elec. Refrig.	Double Door	Double Door	Double Door	Double Door	Double Door	Double Door	Double Door	Double Door	Double Door

*From center of king pin to rear bumper **Includes AC on roof ***Not including options

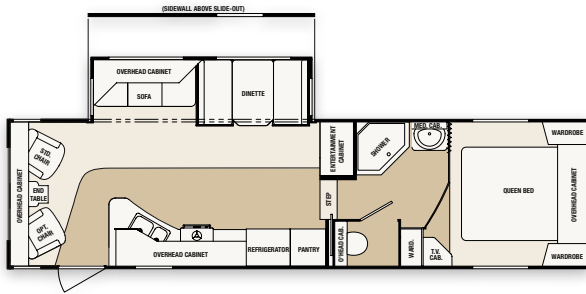
FLOOR PLANS



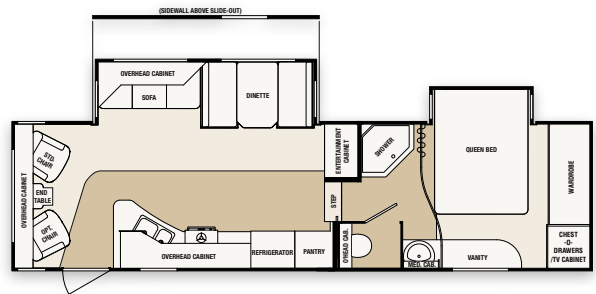
275 FWRKS



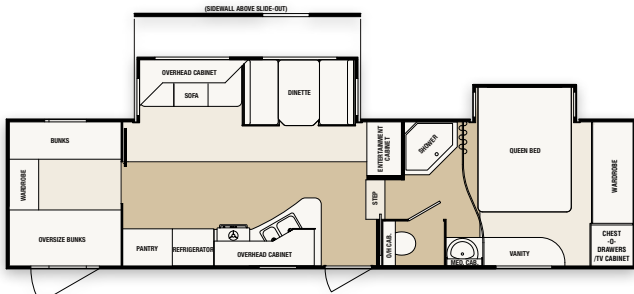
276 FWSGS



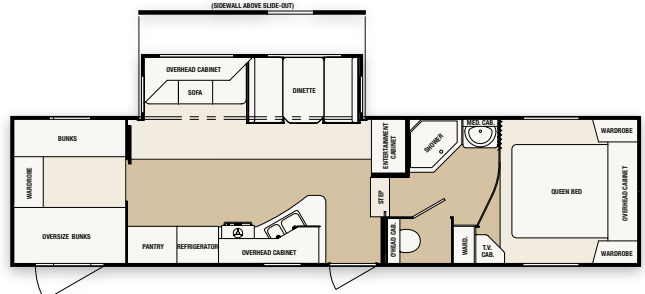
289 FWRLS



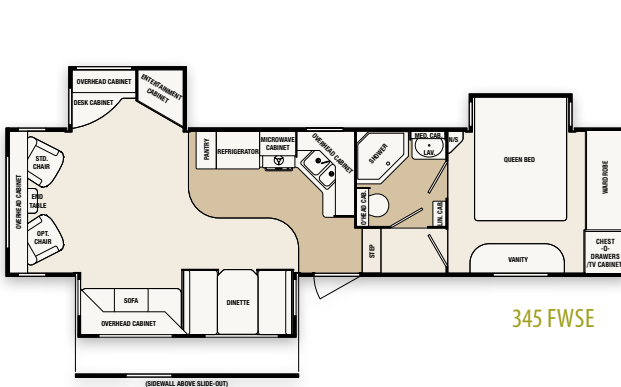
290 FWRLS



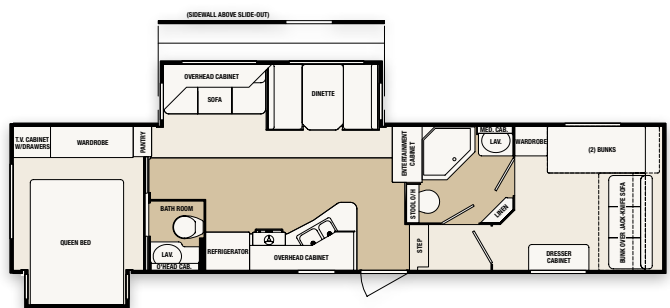
298 FWBHS



299 FWBHS



345 FWSE



346 FWFB



349 FWSB

BETTER BY DESIGN

Built Better, Built Stronger

With a Brookside, you'll find that our aluminum Superstructure is stronger, tows easier and will look better longer than others on the market today. You will also get a higher return on your investment than any of the want-to-be aluminum units on the market. SunnyBrook RV sets the standard high. That's why we created and developed this aluminum framed construction. Our ultra-light structure means a smoother ride, less fuel consumption, and a stronger body. Other brands either use minimal aluminum framing or an inexpensive, complete wood structure. Of course, if you look closer, it's easy to see that they use far less aluminum and structural support. SunnyBrook RV pioneered the aluminum Superstructure over 15 years ago, because they care about quality. If you're looking for the best built trailers, see what's under the surface on a Brookside.

Features	BROOKSIDE	OTHERS*
Z-Frame Storage	YES	NO
All Aluminum Superstructure	YES	NO
Hi-Gloss Gelcoat Exterior	YES	NO
XL Fresh Water Storage Capacity (60 gal.)	YES	NO
"Sky View" Window (Above Slideout)	YES	NO
True Queen-Size Bed (60" x 80")	YES	NO
True 5.1 Stereo Surround Sound	YES	NO
Satellite Prep	YES	NO

	BROOKSIDE	OTHERS*
Oversized Countertops	YES	NO
Extra Tall Interior Slideout Height	YES	NO
Poplar Hardwood Cleats	YES	NO
Lumber Core Stiles	YES	NO
Steel Bathroom Floor Framing	YES	NO
Pull-Out Faucet in Galley	YES	NO
Floor Decking—5/8" Exterior Grade Plywood	YES	NO

* This comparison is to "other" competitors in the same category. Competitive models and features may vary.



SunnyBrook RV

201 14th Street | Middlebury, IN 46540
(574) 825-5250

www.sunnybrookrv.com

your SunnyBrook RV Dealer:

Colton RV & Marine
3122 Niagara Falls Blvd
North Tonawanda, NY 14120
(716) 694-0188
www.ColtonRV.com

Colton RV & Marine
3443 Southwestern Blvd.
Orchard Park, NY 14127
(716) 957-3250
www.Coltonrv.com

Tow Vehicle Disclaimer. CAUTION: Owners of SunnyBrook RV, Inc. recreational vehicles are solely responsible for the selection and proper use of tow vehicles. All customers should consult with a motor vehicle manufacturer or their dealer concerning the purchase and use of suitable tow vehicles for SunnyBrook RV, Inc. products. SunnyBrook RV, Inc. disclaims any liability or damages suffered as a result of the selection, operation, use or misuse of a tow vehicle. SUNNYBROOK RV INC.'S LIMITED WARRANTY DOES NOT COVER DAMAGE TO THE RECREATIONAL VEHICLE OR THE TOW VEHICLE AS A RESULT OF THE SELECTION, OPERATION, USE OR MISUSE OF THE TOW VEHICLE.

All illustrations and specifications contained in this literature are based on the latest product information available at the time of printing. SunnyBrook RV, Inc. reserves the right to make changes to colors, materials, specifications and pricing without notice or obligation. Photography may show optional equipment available at an additional cost. Items used as props in photography are not part of the packages. All liquid capacities and weights are approximate and dimensions are nominal. SunnyBrook reserves the right to make changes and improvements without incorporating these changes into similar models produced at an earlier date. Consult your local, authorized Bristol Bay or SunnyBrook dealer for the latest information and changes. SunnyBrook RV, inc. continues to be a member in good standing of the RVIA.