

ASTORIA

2005 Waldorf Edition



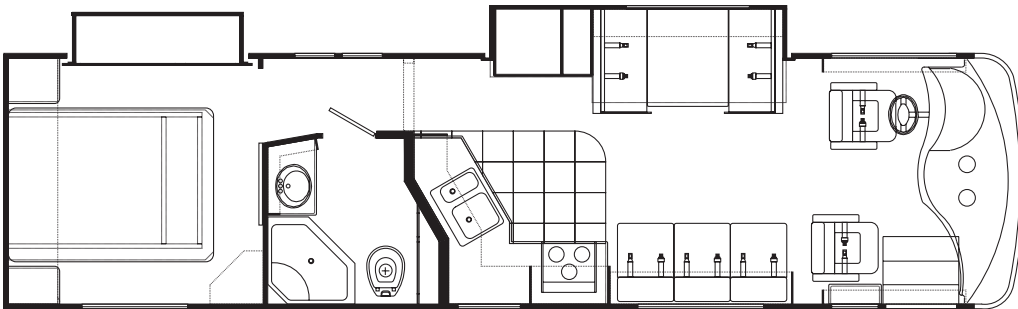
Golden Emerald Full-Body Paint Package



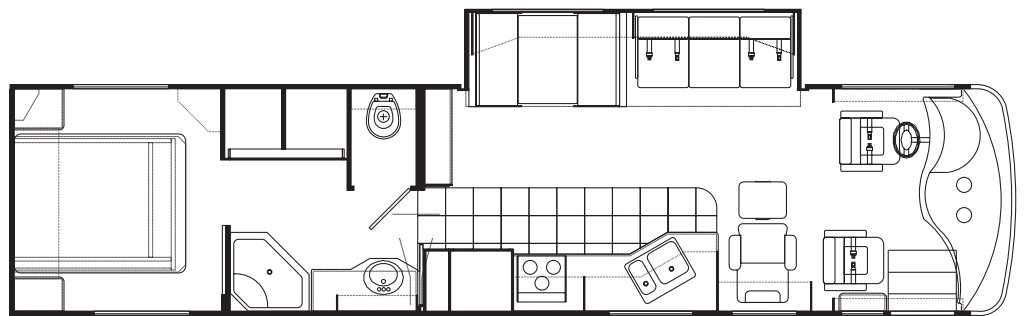
Black Opal Full-Body Paint Package



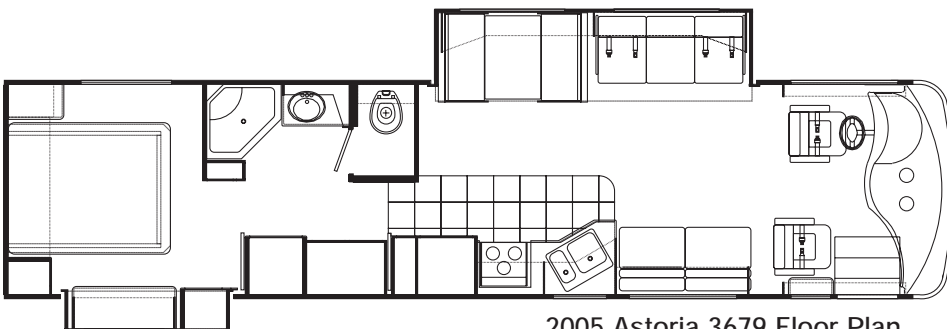
Blue Diamond Full-Body Paint Package



2005 Astoria 3465 Floor Plan



2005 Astoria 3595 Floor Plan



2005 Astoria 3679 Floor Plan



Value by design is back!

2005 ASTORIA (WALDORF EDITION) SPECIFICATIONS

Astoria (Waldorf Edition) EXCLUSIVE FEATURES	3465	3595	3679
Night shades (bedroom)	S	S	S
Full-width stainless-steel stone guard with Damon stencil	S	S	S
Air horns	S	S	S
Front-mounted power mirrors with heat	S	S	S
Ultra-leather reclining driver's seat with 6-way power	S	S	S
Ultra-leather reclining passenger's seat with 6-way power	S	S	S
Electric sun visors	S	S	S
Ceramic tile entry	S	S	S
Full-body paint package	S	S	S
Color-coordinated patio and entry door awning package (electric powered main awning)	S	S	S
Side-mounted awning over slideout	S	S	S
3-burner range and oven	O	O	O
Solid-surface range cover	S	S	S
1.1 cubic-foot microwave/convection oven	S	S	S
Solid-surface countertops (kitchen and bath)	S	S	S
Ceramic tile flooring (kitchen and bath)	S	S	S
Fantastic® power vent	S	S	S
Day/night shades (living area)	S	S	S
Home theater package (VCR, DVD/CD player and 5-channel Dolby® Pro-Logic receiver amplifier)	S	S	S
Windows in slideout end walls	N/A	S	S
Air conditioner: 13,500-BTU ducted center (rear)	S	S	S
Water heater: Motoraid® 10-gallon gas/electric with electronic ignition	S	S	S
Inverter: 600-watt	S	S	S

Astoria (Waldorf Edition) Exterior	3465	3595	3679
Fog lights	S	S	S
Driving lights	S	S	S
Wide-body design	S	S	S
Radius-cornered domed TPO roof	S	S	S
Rear ladder	S	S	S
Aerodynamic front and rear fiberglass caps	S	S	S
Upgraded gelcoated sidewall	S	S	S
Locking aluminum exterior storage doors	S	S	S
Custom-designed front entry door with screen	S	S	S
Black-framed radius-cornered windows	S	S	S
Black-framed, dual-pane windows	O	O	O
Two patio lights (one on each side)	S	S	S
Lighted storage compartments	S	S	S
Full basement pass-through storage	S	S	S
Gas pistons on exterior storage doors	S	S	S
Invisible bra	O	O	O

Astoria (Waldorf Edition) Chassis	3465	3595	3679
Raised-rail chassis	S	S	S
300-hp Cummins® ISB (low torque)	S	S	S
In-block engine heater	S	S	S
Leece Neville® 160-amp, 12-volt alternator	S	S	S
Allison® MH-2000 automatic transmission – 5-speed	S	S	S
Exhaust brake	S	S	S
Full air brakes with automatic slack adjusters (front and rear)	S	S	S
Anti-lock brakes	S	S	S
Midland® Pure-Air Plus™ heated air dryer	S	S	S
Air-ride suspension	S	S	S
Sachs® shock absorbers (front and rear)	S	S	S
22.5-inch radial tires	S	S	S
Leveling jacks	S	S	S
Stainless-steel wheel liners	S	S	S
Front and rear mud flaps	S	S	S
Trailer hitch (5,000 lbs.)	S	S	S
Emergency start circuit	S	S	S
Under-hood light	S	S	S
Layer of neoprene vibration dampener	S	S	S
Dual fuel fills	S	S	S

Astoria (Waldorf Edition) Cockpit	3465	3595	3679
Molded ABS dash	S	S	S
Electronically controlled dash air conditioning	S	S	S
Premium AM/FM radio with in-dash CD player	S	S	S
4-speaker sound	S	S	S
Electronic cruise control	S	S	S
Padded steering wheel	S	S	S
Douglas® tilt/telescoping steering column	S	S	S
Map lights	S	S	S
Dash fans	S	S	S
Tinted wraparound windshield	S	S	S
Windshield privacy shade	S	S	S
3-point, wall-mounted seat belts	S	S	S
Side storage cabinets above driver and passenger	S	S	S
Backup monitor system with audio	S	S	S
Drink holders	S	S	S

Astoria (Waldorf Edition) Living Area	3465	3595	3679
Euro recliner with leather seating surface and ottoman	N/A	S	N/A
Euro recliner with leather seating surface, ottoman and lounge table	N/A	N/A	O
Loveseat IPO Euro recliner and lounge table (décor fabric)	N/A	N/A	S
Sofa bed (décor fabric)	S	N/A	N/A
Hide-a-bed (décor fabric)	N/A	S	S
100% nylon carpeting with stain treatment and padding	S	S	S
27-inch color TV in cockpit overhead with full-function remote, antenna booster and jack	S	S	S
Soft touch padded vinyl ceiling	S	S	S
Fluorescent lighting	S	S	S
Living room pin-up lights	S	S	S
Aisle lights	S	S	S

Astoria (Waldorf Edition) Kitchen	3465	3595	3679
Refrigerator: large flush-mounted, double-door	S	S	S
Refrigerator: side-by-side	O	O	O
Refrigerator: side-by-side with icemaker	N/A	O	O
Refrigerator: raised-panel hardwood front (maple or cherry)	S	S	S
Cooktop	S	S	S
Mirrored backsplash behind stove	S	S	S
Solid-surface sink covers	S	S	S
Single-lever faucet with sprayer	S	S	S
Kitchen faucet water filter	S	S	S
Pantry	S	S	S
Solid-wood raised-panel cabinet doors throughout (maple or cherry)	S	S	S
Booth dinette with wood-edged table	S	S	S

Astoria (Waldorf Edition) Weights and Measures	3465	3595	3679
Chassis	Freightliner®	Freightliner®	Freightliner®
Wheelbase	200	228	228
Overall length	36' 4"	38' 0"	38' 0"
Overall width	101"	101"	101"
Overall height with AC	12' 7"	12' 7"	12' 7"
Std. weight (appx. lbs.)	21,672	N/A	22,931
GVWR	26,850	28,000	28,000
GCWR	31,850	33,000	33,000
Fresh water (appx. gal.)	99	99	99
Grey / black water (appx. gal.)	50	50	50
LP (lbs.)	126	126	126
Sleeping capacity	4	4	4
Exterior storage capacity (cu. ft.)	120	150	150
Interior drawers	23	32	32
Interior storage capacity (cu. ft.)	8	16	16
Fuel capacity (appx. gal.)	100	100	100

Floor plans and specifications are subject to change without notice.

Colton RV & Marine
3122 Niagara Falls Blvd
North Tonawanda, NY 14120
(716) 694-0188
www.ColtonRV.com

Colton RV & Marine
3443 Southwestern Blvd.
Orchard Park, NY 14127
(716) 957-3250
www.Coltonrv.com

P.O. Box 2888 • Elkhart, IN 46515
Customer Service: 800-860-3812
Sales Department: 800-860-5658
www.DamonRV.com



ASTORIA
Waldorf Edition



Buffet with additional storage	N/A	O	O
2 folding chairs (available with buffet)	N/A	O	O
Mini blinds	S	S	S
Wallpaper border	S	S	S
Astoria (Waldorf Edition) Bedroom	3465	3595	3679
Innerspring mattress	S	S	S
Bedspring with throw pillows	S	S	S
Wood-framed designer headboard	S	S	S
13-inch color TV	O	O	O
Lambrequin window treatments	S	S	S
Pin-up lights	S	S	S
AM/FM/CD player with speakers	O	O	O
Astoria (Waldorf Edition) Bathroom	3465	3595	3679
Full-height fiberglass tub or shower with door	S	S	S
Skylight in shower	S	S	S
Power vent	S	S	S
Foot-flush porcelain toilet with sprayer	S	S	S
Wallpaper border	S	S	S
Astoria (Waldorf Edition) Utilities	3465	3595	3679
Air conditioner: 13,500-BTU ducted center (front)	S	S	S
Dual heat pumps with 15,000-BTU A/C and 12,700-BTU heat (n/a with optional A/C)	O	O	O
Furnace: 35,000-BTU electronic ignition, floor-ducted	S	S	S
Water heater bypass kit	S	S	S
Generator: 7.5 kW Generac® Quietpac™	S	S	S
Generator: 7.5 kW Onan® Quiet Diesel™	O	O	O
Converter: 80-amp	S	S	S
Battery disconnect	S	S	S
50-amp, 120-volt service with marine-type detachable power cord	S	S	S
Energy management system	O	O	O
Exterior GFCI receptacle	S	S	S
Enclosed heated potable and holding tanks	S	S	S
Black-water tank flush	S	S	S
Three-way valve for tank/city water fill	S	S	S
Washer/dryer prep	N/A	O	O
Washer/dryer combo	N/A	O	O
Telephone hookup	S	S	S
Cable TV/satellite hookup	S	S	S
Pre-wired for roof-mounted satellite dish	S	S	S
DSS automatic-tracking satellite dish	O	O	O
Exterior shower	S	S	S
Carbon monoxide, LP gas and smoke detectors	S	S	S
Monitor panel with LPG readout	S	S	S