

***PALAZZO***  
BY THOR MOTOR COACH

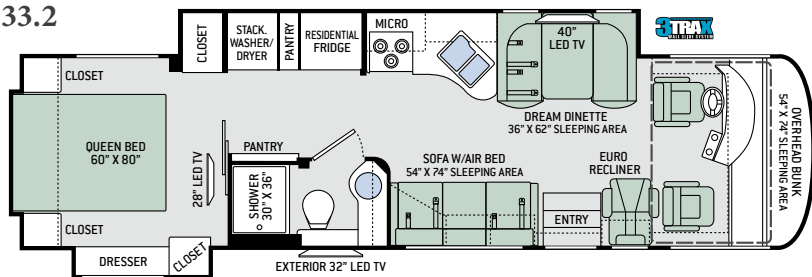


**THOR**  
MOTOR COACH

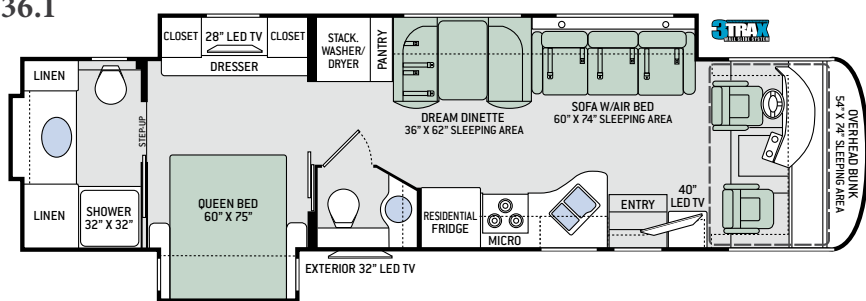
Made to fit.

# Floor Plans

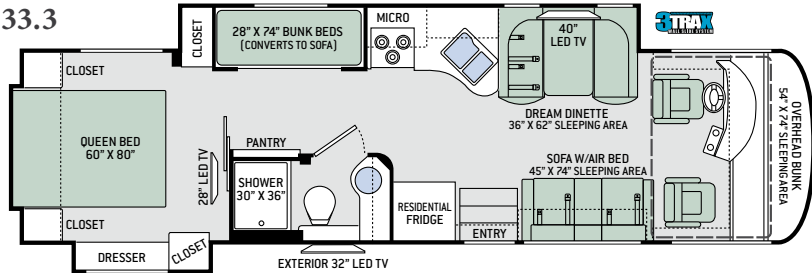
33.2



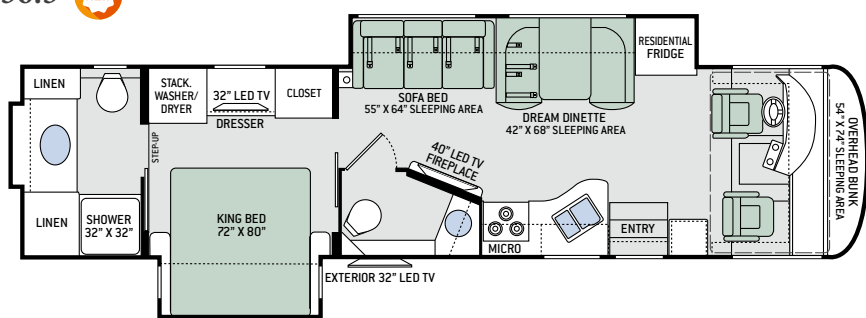
36.1



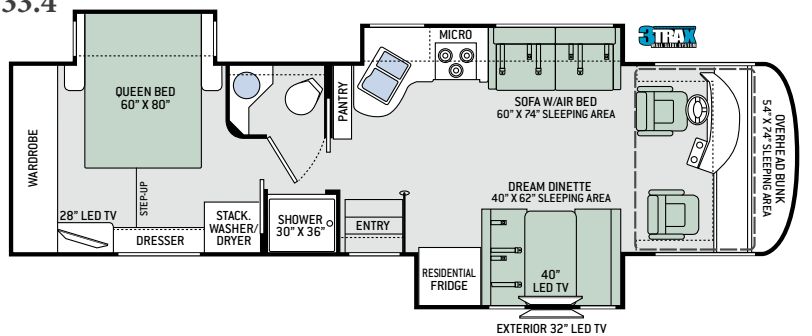
33.3



36.3 



33.4



## Specifications

	33.2	33.3	33.4	36.1	36.3
Chassis	Freightliner XC-S	Freightliner XC-S	Freightliner XC-S	Freightliner XC-S	Freightliner XC-S
Gross Vehicle (GVWR)	26,000	26,000	26,000	28,000	28,000
Gross Combined (GCWR)	30,000	30,000	30,000	33,000	33,000
Wheel Base	208"	208"	208"	242"	242"
Exterior Length	34'-9"	34'-9"	34'-9"	37'-7"	37'-7"
Exterior Height (w/AC)	11'-10"	11'-10"	11'-10"	12'	12'
Exterior Width (w/o mirrors)	101"	101"	101"	101"	101"
Interior Height (living area)	82"	82"	82"	82"	82"
Awning Size	18'	18'	18'	18'	16'
Fuel (gal)	90	90	90	90	90
LPG (lbs)	104	104	104	104	104
Fresh/Waste/Gray Water (gal)	95 / 43 / 43	95 / 43 / 43	95 / 40 / 56	95 / 60 / 43	95 / 60 / 43
Water Heater (gal)	10	10	10	10	10
Furnace (BTUs)	35,000	35,000	Dual 20,000	35,000	35,000
Exterior Storage Capacity (cu. ft.)	126	126	126	170	170



This triple track design supports large rooms, like those found in full-wall slideouts, ensuring simple, reliable, maintenance-free operation. What sets 3TRAX™ apart is the patented rail system, in-floor roller guides and electric motor design which is contained within the sidewall of the motorhome.



# Interior Decor



DESERT DUNE



MAPLE STREET



NIGHTFALL



HIGH-GLOSS GLAZED MILAN CHERRY



HIGH-GLOSS GLAZED PACIFIC CHERRY



HIGH-GLOSS GLAZED RESORT CHERRY

# Exterior Graphics



BRIGHTON BEACH FULL-BODY PAINT



CHELSEA FULL-BODY PAINT



NIGHT PEARL FULL-BODY PAINT



RIVERBANK FULL-BODY PAINT



KITCHEN COUNTERTOP



BEDROOM & BATHROOM COUNTERTOP



RESIDENTIAL VINYL FLOORING

# Features

## CONSTRUCTION & EXTERIOR

- Freightliner® XC-S Straight Rail Chassis
- Cummins® ISB 6.7L Diesel Engine with 300HP, 660 lb.-ft. Torque (33.2, 33.3 & 33.4)
- Cummins® ISB 6.7L Diesel Engine with 340HP, 700 lb.-ft. Torque (36.1 & 36.3)
- 6-Speed Allison Automatic Transmission
- I-Beam Front Axle with 55° Wheel Cut
- Air-Ride™ Suspension
- Full Air Front & Rear Drum Anti-Lock Brakes
- Exhaust Brake
- Sachs® Shock Absorbers
- Dual Fuel Fills
- One-Piece Fiberglass Front & Rear Caps
- Invisible Front Paint Protection
- Full-Body Paint Package with Gel-Coat Sidewalls
- Automatic Leveling Jacks with Touchpad Controls
- Basement Pass-Through Storage Compartment
- Easy Slide Storage Tray (33.2, 33.3, 36.1 & 36.3)
- Side-Hinged, Flush Mount Radius Compartment Doors
- Power Patio Awning with Integrated LED Lighting
- Slideout Room Topper Awnings
- 3TRAX® Wall Slide System (33.2, 33.3, 33.4 & 36.1)
- Frameless Dual Pane Windows
- Roof Ladder
- Electric Entry Step
- Entry Door with Deadbolt Lock
- 10,000-lb. Trailer Hitch with 7-pin Round Connector

## AUTOMOTIVE & COCKPIT

- 10" Touchscreen AM/FM Dash Radio with CD/DVD Player, Bluetooth®, Back-Up Monitor & Mirror Display
- Heated/Remote Exterior Mirrors with Integrated Side View Cameras
- Leatherette Reclining/Swivel Captain's Chairs

- Power Adjustable Driver's Seat
- Emergency Engine Start Switch
- Tilt/Telescoping Steering Column
- Fog Lights
- Power Roller Shade on Windshield
- Manual Roller Shades on Side Windows
- 22.5" Radial Tires with Stainless Steel Wheel Liners
- Valve Stem Extenders on Rear Wheels
- Dash Workstation with 110-volt & 12-volt Outlets

## INTERIOR

- Residential Vinyl Flooring Throughout
- High-Gloss Glazed Cabinetry with Solid Wood Raised Panel Cabinet Doors & Nickel Finish Hardware
- Solid Wood Veneer Paneling
- LED Lighting
- Soft Touch Vinyl Ceiling
- Window Solar & Privacy Shades in Living Area
- Leatherette Euro Recliner with Integrated Ottoman (33.2)
- Leatherette Sofa with Air Bed
- Dream Dinette® Booth
- Electric Fireplace with Remote Control (36.3)

## KITCHEN

- 16 cu. ft. Stainless Steel Residential Refrigerator
- 3-Burner Gas Cooktop
- 30" Over-the-Range Convection Microwave Oven
- Solid Surface Countertops
- Large, Double Bowl Stainless Steel Sink & Single Handle Faucet w/Pull-Down Sprayer
- 12-volt Attic Fan with Cover

## BEDROOM & BATHROOM

- Denver Mattress® King Size Bed w/Tilt-A-View™ Inclining Mechanism (36.3)
- Denver Mattress® Queen Size Bed (33.2, 33.3, 33.4 & 36.1)

- Attractive Headboard, Bedspread & Throw Pillows
- Bunk Beds – Converts to Sofa (33.3)
- Power Drop-Down Hide-Away Overhead Bunk with Cotton Cloud™ Mattress & Bunk Ladder
- USB Charging Ports in Nightstands
- Sconce Wall Lighting (33.2, 33.3 & 33.4)
- Porcelain Toilet
- Oversized Shower with Glass Door
- Power Vent in Bathroom

## ENTERTAINMENT

- 40" LED TV in Living Area
- Blu-Ray Player & Sound Bar
- 32" LED TV in Bedroom (36.3)
- 28" LED TV in Bedroom (33.2, 33.3, 33.4 & 36.1)
- 13" & 24" LED TVs in Bunk Bed Area (33.3)
- Exterior 32" LED TV
- Cable TV & HDMI Ready

## ELECTRICAL & PLUMBING

- Cummins Onan® RV QD 6000 Diesel Generator
- 50-amp Shoreline Power Cord
- Pre-Wired for Solar Charging
- Dual 13,500 BTU Ducted Low-Profile Roof Air Conditioners
- Automatic Generator Start
- Four (4) Auxiliary House Batteries
- Battery Disconnect Switch
- 10-gallon DSI Gas/Electric Water Heater
- Water Heater Bypass System
- Black Tank Flush System
- Stackable Washer/Dryer (33.2, 33.4, 36.1 & 36.3)
- Outside Shower
- Systems Control Center

**IMPORTANT—PLEASE READ:** This brochure reflects product design, fabrication, material, components and specifications at the date of printing, which date is disclosed below. **Please visit us online at [ThorMotorCoach.com](http://ThorMotorCoach.com) or consult with your selling dealership for the latest in standards, options, specification and technical information.** Photographs in the brochure may depict optional equipment or may only be available in certain floor plans. Components, appliances and the chassis may have been manufactured in a calendar year before the vehicle's designated model year. All capacities are approximate. The actual length of the vehicle may differ from that indicated in the brochure due to variances in the manufacturing processes and/or installed components. All dry weights are based on standard model features and do not include optional features or equipment. Component part and appliance manufacturers issue limited warranties covering portions of the vehicle not covered under the limited warranty we issue. Copyright Thor Motor Coach, Inc. © OH 10/01/16

YOUR LOCAL THOR MOTOR COACH DEALER



Colton RV  
North Tonawanda, NY 14120  
(716) 694-0188  
(800) 628-4889  
[www.ColtonRV.com](http://www.ColtonRV.com)

Colton RV  
Orchard Park, NY 14127  
(716) 957-3250  
(800) 628-4889  
[www.Coltonrv.com](http://www.Coltonrv.com)



**Made to fit.**

[thormotorcoach.com/palazzo](http://thormotorcoach.com/palazzo)



P.O. Box 1486, Elkhart, IN 46515 Sales Department: 800.860.5658 Customer Service: 877.855.2867