



# Springdale

by Keystone



2018 **EASTERN**  
EDITION





# Springdale

by Keystone 



2018 **EASTERN**  
EDITION





**Keystone RV  
Company**

## AN ICONIC COMPANY

When Cole Davis founded Keystone RV in 1996 his vision was clear: Build a quality RV loaded with features priced thousands less than other RVs on the market. To accomplish his goal, Cole built a strong team, focused on keeping overhead low, and empowered employees closest to the customer to make decisions. Within a few short months after opening the doors, Keystone produced its very first camper. Delivering big on quality, features and value, the public fell in love and a star was born.

As customers appetite skyrocketed, new Keystone models were added to satisfy growing customer demand. Along with this tremendous growth came the need for expanded production. To meet this need, more manufacturing plants were built and staffed. By the beginning of 2000, Keystone was leading the industry in fifth wheel and trailer sales. Today, Keystone RV Company has grown to encompass over 1 million square feet of manufacturing space with facilities in Goshen, Indiana and Pendleton, Oregon. While Keystone is no longer the small "start up" we once were, our mission has remained true to Cole's vision—"Do the job right and make sure we deliver a quality product every time."



WIRED FOR PERFORMANCE

### THE ONLY TOWABLE MANUFACTURER TO INCORPORATE COLOR-CODED AND NUMBERED ELECTRICAL WIRING ON ALL PRODUCTS

- Creates a clean, well organized wiring layout
- Makes it easy to trace electrical circuits and saves troubleshooting time

SUPERCHARGED A/C COOLING



### TUF-LOK THERMOPLASTIC COUPLERS FORM A PERMANENT, CRUSH-RESISTANT SEAL IN YOUR AIR-CONDITIONING DUCT

- Securely joins ductwork and air-conditioning units
- Crash-resistant design won't pull apart due to rough roads, heat and stress
- Drastically reduces chilled-air leaks to boost cooling efficiency and comfort

IN-FLOOR RESIDENTIAL HEAT-DUCTS



Keystone RV

Competitor

### RESIDENTIAL IN-FLOOR HEAT-DUCT SYSTEM JUST LIKE IN YOUR HOME

- In-floor, hot air vents spaced for greatest comfort
- Distributes heat evenly and warms the floor

**MOST RELIABLE PRODUCTS IN THE INDUSTRY / QUALITY, PROCESS DRIVEN MANUFACTURING / CONSUMER**



COLE  
DAVIS

Founder, Keystone RV Company  
Started Keystone RV with 114 employees  
and 1 production line in 1996.



**Keystone RV  
Company**

## AN ICONIC COMPANY

When Cole Davis founded Keystone RV in 1996 his vision was clear: Build a quality RV loaded with features priced thousands less than other RVs on the market. To accomplish his goal, Cole built a strong team, focused on keeping overhead low, and empowered employees closest to the customer to make decisions. Within a few short months after opening the doors, Keystone produced its very first camper. Delivering big on quality, features and value, the public fell in love and a star was born.

As customers appetite skyrocketed, new Keystone models were added to satisfy growing customer demand. Along with this tremendous growth came the need for expanded production. To meet this need, more manufacturing plants were built and staffed. By the beginning of 2000, Keystone was leading the industry in fifth wheel and trailer sales. Today, Keystone RV Company has grown to encompass over 1 million square feet of manufacturing space with facilities in Goshen, Indiana and Pendleton, Oregon. While Keystone is no longer the small "start up" we once were, our mission has remained true to Cole's vision—"Do the job right and make sure we deliver a quality product every time."



WIRED FOR PERFORMANCE

### THE ONLY TOWABLE MANUFACTURER TO INCORPORATE COLOR-CODED AND NUMBERED ELECTRICAL WIRING ON ALL PRODUCTS

- Creates a clean, well organized wiring layout
- Makes it easy to trace electrical circuits and saves troubleshooting time

SUPERCHARGED A/C COOLING



### TUF-LOK THERMOPLASTIC COUPLERS FORM A PERMANENT, CRUSH-RESISTANT SEAL IN YOUR AIR-CONDITIONING DUCT

- Securely joins ductwork and air-conditioning units
- Crush-resistant design won't pull apart due to rough roads, heat and stress
- Drastically reduces chilled-air leaks to boost cooling efficiency and comfort

IN-FLOOR RESIDENTIAL HEAT-DUCTS



### RESIDENTIAL IN-FLOOR HEAT-DUCT SYSTEM JUST LIKE IN YOUR HOME

- In-floor, hot air vents spaced for greatest comfort
- Distributes heat evenly and warms the floor

**MOST RELIABLE PRODUCTS IN THE INDUSTRY / QUALITY, PROCESS DRIVEN MANUFACTURING / CONS**



# BUILT

## FOR THE LONG HAUL



**INNOVATION THAT STARTS  
WITH A SOLID FOUNDATION**

# 110



**110 RVDA QUALITY CIRCLE AWARDS**

• Keystone Brands have earned 110 DSI Quality Circle Awards since 2007



**TRU-FIT FIVE-POINT SLIDE ROOM CONSTRUCTION  
BACKED BY THE INDUSTRY'S-BEST 3-YEAR  
LIMITED STRUCTURAL WARRANTY**

- Rain channels direct rain away from the slide openings
- Exterior bulb-seals in a locking track stay secure through extreme heat and cold
- Composite slide-room "glide" bar enables the room to move with no binding
- Reinforced roof, walls and floor
- Beefed-up aluminum header above slide room for greater strength



**CONSUMER FOCUSED PRODUCTS AND SERVICE / MOST "DEALER SATISFACTION INDEX" AWARDED RECIPIENT**



# BUILT

## FOR THE LONG HAUL



TRU-FIT TECHNOLOGY

### TRU-FIT FIVE-POINT SLIDE ROOM CONSTRUCTION BACKED BY THE INDUSTRY'S-BEST 3-YEAR LIMITED STRUCTURAL WARRANTY

- Rain channels direct rain away from the slide openings
- Exterior built-seals in a locking track stay secure through extreme heat and cold
- Composite slide-room "glide" bar enables the room to move with no binding
- Reinforced roof, walls and floor
- Beefed-up aluminum header above slide room for greater strength

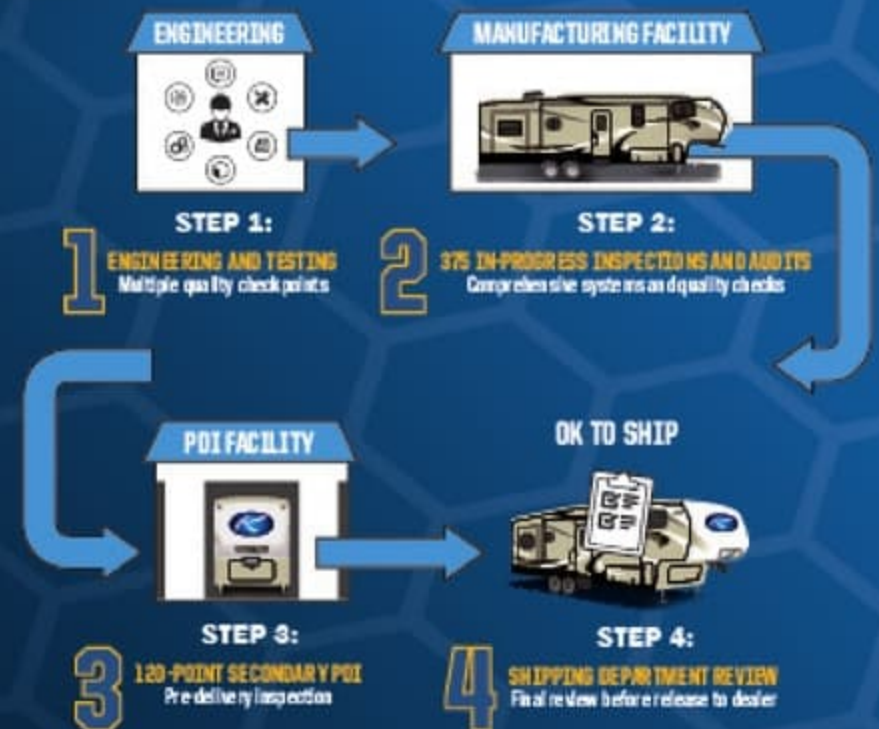
**INNOVATION THAT STARTS  
WITH A SOLID FOUNDATION**

# 110



### 110 RVDA QUALITY CIRCLE AWARDS

- Keystone Brands have earned 110 DSI Quality Circle Awards since 2007



**CONSUMER FOCUSED PRODUCTS AND SERVICE / MOST "DEALER SATISFACTION INDEX" AWARDED RECIPIENT**



# Our Story

An original Keystone RV brand 19 years and running strong... SPRINGDALE is a benchmark of success in the RV industry as well as a legacy for our company Keystone RV. Having made countless camping adventures even better... The SPRINGDALE brand of travel trailers has exceeded expectations and helped create memories for our customers that will last for many years to come.

At Keystone RV, we pride ourselves on unmatched quality control procedures and maintain customer service that is second to none. With our 19 year proven track record... SPRINGDALE travel trailers are constructed with our customers in mind. This quality craftsmanship and attention to detail ensures our customers a peace of mind that they will continue to get the most out of their camping season.

With SPRINGDALE, we understand that our customer's hard earned money should go just as far as their adventures can take them. That is why we believe in the importance of delivering the best floor plans, best features, best look and best quality... period. Once on the road to adventure, our customers will see how camping in their SPRINGDALE travel trailer "is just plain better"! Unmatched in its design, SPRINGDALE offers numerous features you can't find on any of our competitors, as well as more standard options and amenities than any travel trailer in its class. From our interior vaulted ceiling, 14' Super Slide Room to the "Do More" dinette table, we have remained focused on providing great value and convenient features that will always make camping in your SPRINGDALE travel trailer... A Better Way To Camp!

THE COMPLETE CHOICE

## SPRINGDALE MINI SINGLE AXLE

- Full Size Compact Travel Trailer
- (4) Unique Floorplan Choices
- Light Weight with Elbow Room
- Amazing Interior Height in its Class



## SPRINGDALE SS (SUMMERLAND SERIES)

- Wide Variety of Innovative, Fresh & Classic Floorplans
- First Time Buyer to the Experienced Camper
- Boldly Featured Yet Economically Sensitive



## SPRINGDALE

- Complete Collection of Couples Coaches & Family Bunk Models
- Full Featured Travel Trailer With A Look & Features Not Found On Our Competition
- Everything From Single Slide 25' to 38' Triple Slides



## SPRINGDALE FIFTH WHEELS

- The Full Featured Entry Level 5th
- Great Bunkhouse & Couples Units
- Full Color Aluminum Frame Laminated Fiberglass Sidewalls





# Our Story

An original Keystone RV brand 19 years and running strong... SPRINGDALE is a benchmark of success in the RV industry as well as a legacy for our company Keystone RV. Having made countless camping adventures even better... The SPRINGDALE brand of travel trailers has exceeded expectations and helped create memories for our customers that will last for many years to come.

At Keystone RV, we pride ourselves on unmatched quality control procedures and maintain customer service that is second to none. With our 19 year proven track record... SPRINGDALE travel trailers are constructed with our customers in mind. This quality craftsmanship and attention to detail ensures our customers a peace of mind that they will continue to get the most out of their camping season.

With SPRINGDALE, we understand that our customer's hard earned money should go just as far as their adventures can take them. That is why we believe in the importance of delivering the best floor plans, best features, best look and best quality... period. Once on the road to adventure, our customers will see how camping in their SPRINGDALE travel trailer "is just plain better"! Unmatched in its design, SPRINGDALE offers numerous features you can't find on any of our competitors, as well as more standard options and amenities than any travel trailer in its class. From our interior vaulted ceiling, 14' Super Slide Room to the "Do More" dinette table, we have remained focused on providing great value and convenient features that will always make camping in your SPRINGDALE travel trailer... A Better Way To Camp!

THE COMPLETE CHOICE

## SPRINGDALE MINI SINGLE AXLE

- Full Size Compact Travel Trailer
- (4) Unique Floorplan Choices
- Light Weight with Elbow Room
- Amazing Interior Height in its Class



## SPRINGDALE SS (SUMMERLAND SERIES)

- Wide Variety of Innovative, Fresh & Classic Floorplans
- First Time Buyer to the Experienced Camper
- Boldly Featured Yet Economically Sensitive



## SPRINGDALE

- Complete Collection of Couples Coaches & Family Bunk Models
- Full Featured Travel Trailer With A Look & Features Not Found On Our Competition
- Everything From Single Slide 25' to 38' Triple Slides



## SPRINGDALE FIFTH WHEELS

- The Full Featured Entry Level 5th
- Great Bunkhouse & Couples Units
- Full Color Aluminum Frame Laminated Fiberglass Sidewalls





# Springdale

**EASTERN EDITION** by Keystone



## NEW FOR 2018

- ✓ NEW FLOORING - BEAUFLOOR DESIGN-7YR WARRANTY
- ✓ NEW SOLID WOOD CABINET DESIGN
- ✓ NEW GRAPHICS PACKAGE
- ✓ NEW DESIGNER WALL BOARD
- ✓ NEW MULTI-COLOR LEVEL LOOP CARPET
- ✓ NEW SLIDE ROOM FASCIA W/ WOOD INSERT ACCENTS
- ✓ NEW SOLAR PREP
- ✓ NEW BRIGHTER LED LIGHTS
- ✓ DINETTE BOOTH W/ACCENT LIGHTING
- ✓ NEW PRESSED COUNTERTOPS (SG ONLY)
- ✓ NEW FURRION OVEN W/GLASS TOP COVER (SG ONLY)
- ✓ NEW HUGE UNDER MOUNTED KITCHEN SINK (SG ONLY)
- ✓ HARD DOOR IN SG & SS MODELS (WHERE APPLICABLE)
- ✓ NEW FURRION ENTERTAINMENT SYSTEM
- ✓ NEW FURRION TV'S 32" & 39" (OPTION)

## SPRINGDALE TOP FEATURES

- ✓ 82" VAULTED CEILING
- ✓ POWER STABILIZER JACKS
- ✓ POWER TONGUE JACK (OPTION)
- ✓ POWER AWNING W/ LED LIGHTS
- ✓ ALUMINUM STEPS
- ✓ SMOOTH FRONT METAL (50 GAUGE)
- ✓ FRONT DIAMOND PLATE
- ✓ XL GRAB HANDLE
- ✓ LIONSHEAD NITRO FILLED TIRES
- ✓ QUICK CONNECT GAS LINE FOR GRILLING
- ✓ OUTSIDE WATER PORT W/ QUICK CONNECT HOSE
- ✓ OUTDOOR ENT. CENTERS (SELECT MODELS)
- ✓ OUTSIDE TV BRACKET, OUTLET & CABLE HOOKUP
- ✓ FRICTION HINGE DOOR "WIND BUSTER"
- ✓ PREPPED FOR BACK UP CAMERA
- ✓ (2) 30 LB. PROPANE TANKS W/ AUTO CHANGE OVER
- ✓ BLACK TANK FLUSH
- ✓ OUTDOOR SHOWER
- ✓ SOLID WOOD CABINETRY
- ✓ KING JACK HD ANTENNA
- ✓ JALOUSIE WINDOWS
- ✓ DARKENING SHADES
- ✓ GAS STRUTTED-UNDER BED STORAGE



# Springdale

**EASTERN**  
EDITION

by Keystone



## NEW FOR 2018

- ✓ **NEW FLOORING - BEAUFLOOR DESIGN-7YR WARRANTY**
- ✓ **NEW SOLID WOOD CABINET DESIGN**
- ✓ **NEW GRAPHICS PACKAGE**
- ✓ **NEW DESIGNER WALL BOARD**
- ✓ **NEW MULTI-COLOR LEVEL LOOP CARPET**
- ✓ **NEW SLIDE ROOM FASCIA W/ WOOD INSERT ACCENTS**
- ✓ **NEW SOLAR PREP**
- ✓ **NEW BRIGHTER LED LIGHTS**
- ✓ **DINETTE BOOTH W/ACCENT LIGHTING**
- ✓ **NEW PRESSED COUNTERTOPS (SG ONLY)**
- ✓ **NEW FURRIION OVEN W/GLASS TOP COVER (SG ONLY)**
- ✓ **NEW HUGE UNDER MOUNTED KITCHEN SINK (SG ONLY)**
- ✓ **HARD DOOR IN SG & SS MODELS (WHERE APPLICABLE)**
- ✓ **NEW FURRIION ENTERTAINMENT SYSTEM**
- ✓ **NEW FURRIION TV'S 32" & 39" (OPTION)**

## SPRINGDALE TOP FEATURES

- ✓ **82" VAULTED CEILING**
- ✓ **POWER STABILIZER JACKS**
- ✓ **POWER TONGUE JACK (OPTION)**
- ✓ **POWER AWNING W/ LED LIGHTS**
- ✓ **ALUMINUM STEPS**
- ✓ **SMOOTH FRONT METAL (50 GAUGE)**
- ✓ **FRONT DIAMOND PLATE**
- ✓ **XL GRAB HANDLE**
- ✓ **LIONSHEAD NITRO FILLED TIRES**
- ✓ **QUICK CONNECT GAS LINE FOR GRILLING**
- ✓ **OUTSIDE WATER PORT W/ QUICK CONNECT HOSE**
- ✓ **OUTDOOR ENT. CENTERS (SELECT MODELS)**
- ✓ **OUTSIDE TV BRACKET, OUTLET & CABLE HOOKUP**
- ✓ **FRICTION HINGE DOOR "WIND BUSTER"**
- ✓ **PREPPED FOR BACK UP CAMERA**
- ✓ **(2) 30 LB. PROPANE TANKS W/ AUTO CHANGE OVER**
- ✓ **BLACK TANK FLUSH**
- ✓ **OUTDOOR SHOWER**
- ✓ **SOLID WOOD CABINETRY**
- ✓ **KING JACK HD ANTENNA**
- ✓ **JALOUSIE WINDOWS**
- ✓ **DARKENING SHADES**
- ✓ **GAS STRUTTED-UNDER BED STORAGE**



# BUNK MODELS



WEIGHT LENGTH **240BH**  
6407 28' 11"



WEIGHT LENGTH **303BH**  
8086 35'



WEIGHT LENGTH **280BH**  
7115 32' 11"



WEIGHT LENGTH **332RB**  
9263 37' 7"

Springdale's bunk house models offer you great options to match any of your family needs. We've built our bunkrooms with plenty of storage for all the clothes and toys. Best of all, everyone has their own space when it's time to settle in for the night. The perfect lineup of floorplans for your family, kids, grand-children, friends. Everyone fits with room to spare in a Springdale bunk house.

- ✓ LARGE STORAGE-CABINET AREA
- ✓ THEATRE SEATING
- ✓ OUTSIDE KITCHEN
- ✓ 40" TELEVISION
- ✓ POWER AWNING W/ LED LIGHTS



WEIGHT LENGTH **270LE**  
6920 32' 11"



# BUNK MODELS



WEIGHT 6407 LENGTH 28' 11" **240BH**



WEIGHT 8086 LENGTH 35' **303BH**



WEIGHT 7115 LENGTH 32' 11" **280BH**



WEIGHT 9263 LENGTH 37' 7" **332RB**

Springdale's bunk house models offer you great options to match any of your family needs. We've built our bunkrooms with plenty of storage for all the clothes and toys. Best of all, everyone has their own space when it's time to settle in for the night. The perfect lineup of floorplans for your family, kids, grand-children, friends. Everyone fits with room to spare in a Springdale bunk house.

- ✓ LARGE STORAGE-CABINET AREA
- ✓ THEATRE SEATING
- ✓ OUTSIDE KITCHEN
- ✓ 40" TELEVISION
- ✓ POWER AWNING W/ LED LIGHTS



WEIGHT 6920 LENGTH 32' 11" **270LE**





WEIGHT	LENGTH	MODEL
6069	27' 5"	<b>235RB</b>



WEIGHT	LENGTH	MODEL
7781	32' 10"	<b>287RB</b>



WEIGHT	LENGTH	MODEL
6300	29' 11"	<b>252RL</b>



WEIGHT	LENGTH	MODEL
8343	35' 7"	<b>311RE</b>



WEIGHT	LENGTH	MODEL
6450	30' 2"	<b>262RK</b>



WEIGHT	LENGTH	MODEL
9200	37' 3"	<b>333RE</b>



WEIGHT	LENGTH	MODEL
7065	31' 10"	<b>271RL</b>

*Springdale offers you family friendly floorplans that come packed to meet the needs of any sized family. Your family is sure to enjoy the increased spaciousness of our RL, RB, RK models. Springdale's bedroom provides spacious sleeping quarters and loads of storage space for a great night's sleep.*

# RL/RB/RK MODELS





WEIGHT	LENGTH	Model
6069	27' 5"	<b>235RB</b>



WEIGHT	LENGTH	Model
7781	32' 10"	<b>287RB</b>



WEIGHT	LENGTH	Model
6300	29' 11"	<b>252RL</b>



WEIGHT	LENGTH	Model
8343	35' 7"	<b>311RE</b>



WEIGHT	LENGTH	Model
6450	30' 2"	<b>262RK</b>



WEIGHT	LENGTH	Model
9200	37' 3"	<b>333RE</b>



WEIGHT	LENGTH	Model
7065	31' 10"	<b>271RL</b>

*Springdale offers you family friendly floorplans that come packed to meet the needs of any sized family. Your family is sure to enjoy the increased spaciousness of our RL, RB, RK models. Springdale's bedroom provides spacious sleeping quarters and loads of storage space for a great night's sleep.*

# RL/RB/RK MODELS



# 38'S TRAVEL TRAILERS



## 38' BUNKHOUSE

- QUAD BUNKROOM W/ STOW-N-GO KIDS DINETTE
- ARMOIRE W/ STORAGE IN BUNKROOM
- SPACIOUS BATHROOM W/ NEO ANGLED SHOWER
- MASTER BEDROOM SLIDE
- CORNER PANTRY

WEIGHT LENGTH **38BH**  
8661 38' 11"



## 38' FRONT LIVING

- SECTIONAL LEATHER SOFA W/ FOLD OUT SLEEPING
- ENTERTAINMENT AREA W/ FIREPLACE
- SPACIOUS BATHROOM W/ NEO ANGLED SHOWER
- MASTER BEDROOM SLIDE
- CORNER PANTRY

WEIGHT LENGTH **38FL**  
8587 38' 11"



## 38' FRONT QUEEN

- (2) QUEEN BEDROOMS
- ENTERTAINMENT CENTER W/ BENCH, SHOERACK & O/H STORAGE
- SPACIOUS BATHROOM W/ NEO ANGLED SHOWER
- MASTER BEDROOM SLIDE
- CORNER PANTRY

WEIGHT LENGTH **38FQ**  
8628 38' 11"

## TOP 38'S FEATURES

- 18 CU. FT. RESIDENTIAL REFRIGERATOR
- HEATED & ENCLOSED UNDERBELLY
- MASTER BEDROOM ARMOIRE & ENT. CENTER
- 10 GALLON GAS/ELECTRIC DSI WATER HEATER
- 60" PATIO DOOR
- POWER AWNING
- 50 AMP SERVICE WIRED & BRACED FOR 2ND AC
- FRICTION HINGE DOOR
- OUTDOOR SHOWER



# 38's TRAVEL TRAILERS



## 38' BUNKHOUSE

- QUAD BUNKROOM W/STOW-N-GO KIDS DINETTE
- ARMOIRE W/STORAGE IN BUNKROOM
- SPACIOUS BATHROOM W/NEO ANGLED SHOWER
- MASTER BEDROOM SLIDE
- CORNER PANTRY

WEIGHT 8661 LENGTH 38' 11" **38BH**



## 38' FRONT LIVING

- SECTIONAL LEATHER SOFA W/ FOLD OUT SLEEPING
- ENTERTAINMENT AREA W/ FIREPLACE
- SPACIOUS BATHROOM W/NEO ANGLED SHOWER
- MASTER BEDROOM SLIDE
- CORNER PANTRY

WEIGHT 8587 LENGTH 38' 11" **38FL**



## 38' FRONT QUEEN

- (2) QUEEN BEDROOMS
- ENTERTAINMENT CENTER W/ BENCH, SHOERACK & O/H STORAGE
- SPACIOUS BATHROOM W/NEO ANGLED SHOWER
- MASTER BEDROOM SLIDE
- CORNER PANTRY

WEIGHT 8628 LENGTH 38' 11" **38FQ**

## TOP 38'S FEATURES

- 18 CU. FT. RESIDENTIAL REFRIGERATOR
- HEATED & ENCLOSED UNDERBELLY
- MASTER BEDROOM ARMOIRE & ENT. CENTER
- 10 GALLON GAS/ELECTRIC DSI WATER HEATER
- 60" PATIO DOOR
- POWER AWNING
- 50 AMP SERVICE WIRED & BRACED FOR 2ND AC
- FRICTION HINGE DOOR
- OUTDOOR SHOWER



- 1 Continuous Steel I-Beam Powder Coated Frame
- 2 Walkable Crowned Roof
- 3 Hurricane Strap Reinforced Structure
- 4 Oversized Pass Through Storage
- 5 Diamond Plate Front Protector
- 6 One Piece Alpha-Ply Roof
- 7 3/8" Walkable Roof Decking
- 8 Dual 30 Lb. LP Bottles
- 9 Crowned Slide Box
- 10 Electric Awning
- 11 Residential Batten Insulation Throughout
- 12 Dual Battery Storage Tray
- 13 XL Entry Assist Handle
- 14 5/8" Dynaspan Floor Decking
- 15 Aluminum Wheels (Opt.)
- 16 Triple Stage Slide Room Seals
- 17 Aluminum Triple Entry Steps (Select Models)
- 18 2x3 Floor Joists 12" on Center
- 19 Wide Stance Axles (Select Models)
- 20 Radius Skirting
- 21 E-Z Lube Axles
- 22 0.30 Aluminum Baked Enamel Siding
- 23 Black Framed, Tinted Safety Glass Windows
- 24 Rain Gutter with Extended Down Spouts
- 25 Fender Skirts
- 26 13,500 BTU Ducted Air Conditioner (Opt. 15K)
- 27 Bumper Sewer Hose Storage
- 28 Exterior TV Mount
- 29 (4) Stabilizer Jacks
- 30 Electric Tongue Jack (Opt.)



- 30K BTU FURNACE
  - ENCLOSED UNDERBELLY
  - DEDICATED AIR DUCT FORCING HEAT DIRECTLY FROM FURNACE INTO THE UNDERBELLY
- [EXCLUDES: 2020QB, 2600TB]





- 1 Continuous Steel I-Beam Powder Coated Frame
- 2 Walkable Crowned Roof
- 3 Hurricane Strap Reinforced Structure
- 4 Oversized Pass Through Storage
- 5 Diamond Plate Front Protector
- 6 One Piece Alpha-Ply Roof
- 7 3/8" Walkable Roof Decking
- 8 Dual 30 Lb. LP Bottles
- 9 Crowned Slide Box
- 10 Electric Awning
- 11 Residential Batten Insulation Throughout
- 12 Dual Battery Storage Tray
- 13 XL Entry Assist Handle
- 14 5/8" Dynaspan Floor Decking
- 15 Aluminum Wheels (Opt.)
- 16 Triple Stage Slide Room Seals
- 17 Aluminum Triple Entry Steps (Select Models)
- 18 2x3 Floor Joists 12" on Center
- 19 Wide Stance Axles (Select Models)
- 20 Radius Skirting
- 21 E-Z Lube Axles
- 22 0.30 Aluminum Baked Enamel Siding
- 23 Black Framed, Tinted Safety Glass Windows
- 24 Rain Gutter with Extended Down Spouts
- 25 Fender Skirts
- 26 13,500 BTU Ducted Air Conditioner (Opt. 15K)
- 27 Bumper Sewer Hose Storage
- 28 Exterior TV Mount
- 29 [4] Stabilizer Jacks
- 30 Electric Tongue Jack (Opt.)



- 30K BTU FURNACE
  - ENCLOSED UNDERBELLY
  - DEDICATED AIR DUCT FORCING HEAT DIRECTLY FROM FURNACE INTO THE UNDERBELLY
- (EXCLUDES: 2020QB, 2600TB)





# Springdale EASTERN EDITION by Keystone FIFTH WHEELS



## TOP SELLING FIFTH WHEEL FEATURES

- ✓ LAMINATED SIDEWALLS
  - ✓ FIBERGLASS FRONT CAP
  - ✓ POWER AWNING W/ LED LIGHTS
  - ✓ ELECTRIC STABILIZER JACKS
  - ✓ POWER FRONT LANDING GEAR
  - ✓ BEDROOM WARDROBE SLIDE
- ✓ DOUBLE ENTRY BATH
  - ✓ BACK UP CAMERA PREP
  - ✓ ALUMINUM ENTRY STEPS
  - ✓ 50 AMP SERVICE WIRED & BRACED FOR 2ND A/C
  - ✓ PRESSED COUNTERTOPS
  - ✓ FURRION ENTERTAINMENT SYSTEM
- ✓ UNDERMOUNT FLUSH HIGH IMPACT ONE PIECE KITCHEN SINK W/COVER
  - ✓ FURRION OVEN W/GLASS TOP
  - ✓ DO-MORE DINETTE TABLE
  - ✓ DINETTE W/BOOTH LIGHTING
  - ✓ SOLAR PREP



WEIGHT 8493 LENGTH 32' 10" **253FWRE**



WEIGHT 8157 LENGTH 31' **278FWRL**



WEIGHT 8595 LENGTH 34' 10" **300FWBH**



WEIGHT 8880 LENGTH 33' 9" **302FWRK**



# Springdale EASTERN EDITION **FIFTH WHEELS** by Keystone



## TOP SELLING FIFTH WHEEL FEATURES

- ✓ LAMINATED SIDEWALLS
- ✓ FIBERGLASS FRONT CAP
- ✓ POWER AWNING W/ LED LIGHTS
- ✓ ELECTRIC STABILIZER JACKS
- ✓ POWER FRONT LANDING GEAR
- ✓ BEDROOM WARDROBE SLIDE
- ✓ DOUBLE ENTRY BATH
- ✓ BACK UP CAMERA PREP
- ✓ ALUMINUM ENTRY STEPS
- ✓ 50 AMP SERVICE WIRED & BRACED FOR 2ND A/C
- ✓ PRESSED COUNTERTOPS
- ✓ FURRION ENTERTAINMENT SYSTEM
- ✓ UNDERMOUNT FLUSH HIGH IMPACT ONE PIECE KITCHEN SINK W/COVER
- ✓ FURRION OVEN W/GLASS TOP
- ✓ DO-MORE DINETTE TABLE
- ✓ DINETTE W/BOOTH LIGHTING
- ✓ SOLAR PREP



WEIGHT 8493 LENGTH 32' 10" **253FWRE**



WEIGHT 8157 LENGTH 31' **278FWRL**



WEIGHT 8595 LENGTH 34' 10" **300FWBH**



WEIGHT 8880 LENGTH 33' 9" **302FWRK**





## SS TOP FEATURES

- ✔ **ELECTRIC AWNING W/ LED LIGHTS**
- ✔ **POWER STABILIZER JACKS (SELECT MODELS)**
- ✔ **POWER TONGUE JACK (OPT.)**
- ✔ **OUTDOOR ENT. CENTER (SELECT MODELS)**
- ✔ **FULL LENGTH GAS LINE W/ QUICK CONNECT**
- ✔ **WATER PORT W/ QUICK CONNECT HOSE**
- ✔ **OUTDOOR SHOWER**
- ✔ **SOLAR PREP**
- ✔ **(2) 20LB. LP TANKS W/ AUTO CHANGEOVER**
- ✔ **BACK UP CAMERA PREP**
- ✔ **FRONT DIAMOND PLATE**
- ✔ **STRUTTED ENTRY DOORS**
- ✔ **LIONS HEAD NITRO FILL (5 YR NO EXCUSES)**
- ✔ **HEATED & ENCLOSED UNDERBELLY (SELECT MODELS)**
- ✔ **KING JACK HD ANTENNA**
- ✔ **THERMOSTATICALLY CONTROLLED A/C (MOST MODELS)**
- ✔ **SOLID WOOD CABINETRY**
- ✔ **ONE PIECE HIGH IMPACT KITCHEN SINK**
- ✔ **DINETTE BOOTH ACCENT LIGHTING**
- ✔ **FURRION ENT. SYSTEM**
- ✔ **FURRION MOBILE TV (OPT.)**
- ✔ **ALUMINUM WHEELS (OPT.)**





## SS TOP FEATURES

- ✔ **ELECTRIC AWNING W/ LED LIGHTS**
- ✔ **POWER STABILIZER JACKS (SELECT MODELS)**
- ✔ **POWER TONGUE JACK (OPT.)**
- ✔ **OUTDOOR ENT. CENTER (SELECT MODELS)**
- ✔ **FULL LENGTH GAS LINE W/QUICK CONNECT**
- ✔ **WATER PORT W/QUICK CONNECT HOSE**
- ✔ **OUTDOOR SHOWER**
- ✔ **SOLAR PREP**
- ✔ **(2) 20LB. LP TANKS W/AUTO CHANGEOVER**
- ✔ **BACK UP CAMERA PREP**
- ✔ **FRONT DIAMOND PLATE**
- ✔ **STRUTTED ENTRY DOORS**
- ✔ **LIONS HEAD NITRO FILL (5 YR NO EXCUSES)**
- ✔ **HEATED & ENCLOSED UNDERBELLY (SELECT MODELS)**
- ✔ **KING JACK HD ANTENNA**
- ✔ **THERMOSTATICALLY CONTROLLED A/C (MOST MODELS)**
- ✔ **SOLID WOOD CABINETRY**
- ✔ **ONE PIECE HIGH IMPACT KITCHEN SINK**
- ✔ **DINETTE BOOTH ACCENT LIGHTING**
- ✔ **FURRION ENT. SYSTEM**
- ✔ **FURRION MOBILE TV (OPT.)**
- ✔ **ALUMINUM WHEELS (OPT.)**



# BUNK MODELS



WEIGHT LENGTH  
4861 28' 10" **2600TB**



WEIGHT LENGTH  
6597 32' 1" **2820BH**



WEIGHT LENGTH  
6528 32' 7" **2980BH**



WEIGHT LENGTH  
6145 31' 4" **2720BH**



WEIGHT LENGTH  
6701 33' 2" **2960BH**



WEIGHT LENGTH  
7641 34' 11" **3030BH**

# RL/RK/RB MODELS



WEIGHT LENGTH  
4279 24' 10" **2020QB**



WEIGHT LENGTH  
6005 29' 8" **2570RL**



WEIGHT LENGTH  
5437 26' 2" **2200MB**



WEIGHT LENGTH  
6051 28' 11" **2660RL**



WEIGHT LENGTH  
5033 27' 11" **2450RB**



WEIGHT LENGTH  
6615 33' 4" **2930RK**





# BUNK MODELS



WEIGHT 4861 LENGTH 28' 10" **2600TB**



WEIGHT 6597 LENGTH 32' 1" **2820BH**



WEIGHT 6528 LENGTH 32' 7" **2980BH**



WEIGHT 6145 LENGTH 31' 4" **2720BH**



WEIGHT 6701 LENGTH 33' 2" **2960BH**



WEIGHT 7641 LENGTH 34' 11" **3030BH**

# RL/RK/RB MODELS



WEIGHT 4279 LENGTH 24' 10" **2020QB**



WEIGHT 6005 LENGTH 29' 8" **2570RL**



WEIGHT 5437 LENGTH 26' 2" **2200MB**



WEIGHT 6051 LENGTH 28' 11" **2660RL**



WEIGHT 5033 LENGTH 27' 11" **2450RB**



WEIGHT 6615 LENGTH 33' 4" **2930RK**





# Springdale SINGLE AXLES



## HUGE FEATURES IN A "MINI" PACKAGE:

- ✓ 8' WIDE
- ✓ 78" INTERIOR HEIGHT
- ✓ SOLID WOOD CABINET DOORS
- ✓ DYNASpan SEAMLESS FLOORING (25YR WARRANTY)
- ✓ 3.2 CU. FT. GAS/ELECTRIC REFRIGERATOR
- ✓ 6 GALLON GAS/ELECTRIC WATER HEATER
- ✓ 2 BURNER COOK TOP
- ✓ LED LIGHTS
- ✓ SIDEMOUNT 8K A/C (13.5K A/C OPTIONAL)
- ✓ AM/FM BLUETOOTH STEREO
- ✓ INDOOR/OUTDOOR SPEAKERS
- ✓ TV ANTENNA W/ SIGNAL BOOSTER
- ✓ FRONT DIAMOND PLATE
- ✓ FRONT & REAR STABILIZER JACKS
- ✓ GAS STRUTTED ENTRY DOOR
- ✓ 20 LB. PROPANE TANK



WEIGHT LENGTH  
3235 21'5" **1700FQ**



WEIGHT LENGTH  
3285 21'5" **1800BH**



WEIGHT LENGTH  
3295 21'5" **1750RD**



WEIGHT LENGTH  
3350 21'5" **1850FL**



# Springdale

## SINGLE AXLES



### HUGE FEATURES IN A "MINI" PACKAGE:

- ✓ 8' WIDE
- ✓ 78" INTERIOR HEIGHT
- ✓ SOLID WOOD CABINET DOORS
- ✓ DYNASPAN SEAMLESS FLOORING (25YR WARRANTY)
- ✓ 3.2 CU. FT. GAS/ELECTRIC REFRIGERATOR
- ✓ 6 GALLON GAS/ELECTRIC WATER HEATER
- ✓ 2 BURNER COOK TOP
- ✓ LED LIGHTS
- ✓ SIDEMOUNT 8K A/C (13.5K A/C OPTIONAL)
- ✓ AM/FM BLUETOOTH STEREO
- ✓ INDOOR/OUTDOOR SPEAKERS
- ✓ TV ANTENNA W/ SIGNAL BOOSTER
- ✓ FRONT DIAMOND PLATE
- ✓ FRONT & REAR STABILIZER JACKS
- ✓ GAS STRUTTED ENTRY DOOR
- ✓ 20 LB. PROPANE TANK



WEIGHT 3235 LENGTH 21'5" **1700FQ**



WEIGHT 3285 LENGTH 21'5" **1800BH**



WEIGHT 3295 LENGTH 21'5" **1750RD**



WEIGHT 3350 LENGTH 21'5" **1850FL**



## SPECIFICATIONS

### SPRINGDALE TRAVEL TRAILERS

MODEL	WEIGHT	CC	HITCH	FRESH WATER	WASTE WATER	GRAY WATER	LPG	LENGTH*	HEIGHT
235RB	6069	1726	795	52	39	78	60	27' 5"	11' 3"
240BH	6407	1593	735	52	39	69	60	28' 11"	11' 3"
252RL	6300	2700	710	52	39	39	60	29' 11"	11' 3"
262RK	6450	1300	780	52	30	78	60	30' 2"	11' 3"
270LE	6920	2665	785	52	39	60	60	32' 11"	11' 3"
271RL	7065	2635	935	52	39	30	60	31' 10"	11' 3"
280BH	7115	2485	805	52	39	60	60	32' 11"	11' 3"
287RB	7781	1954	935	52	39	69	60	32' 10"	11' 3"
303BH	8086	1684	970	52	39	39	60	35' 0"	11' 4"
311RE	8343	1417	960	52	39	78	60	35' 7"	10' 11"
332RB	9263	2112	1215	52	30	78	60	37' 7"	10' 11"
333RE	9200	2090	1095	52	39	69	60	37' 3"	10' 11"
38BH	8661	2494	995	56	39	69	60	38' 11"	11' 4"
38FL	8587	2518	945	56	39	69	60	38' 11"	11' 4"
38FQ	8628	2507	975	56	39	69	60	38' 11"	11' 4"

### SPRINGDALE FIFTH WHEELS

MODEL	WEIGHT	CC	HITCH	FRESH WATER	WASTE WATER	GRAY WATER	LPG	LENGTH*	HEIGHT
253FWRE	8493	1807	1500	52	39	39	60	32' 10"	11' 10"
278FWRL	8157	2038	1395	52	39	39	60	31' 0"	11' 10"
300FWBH	8595	1755	1555	52	69	78	60	34' 10"	11' 4"
302FWRK	8880	1440	1520	52	39	78	60	33' 9"	11' 4"

### SS TRAVEL TRAILERS & SINGLE AXLES

MODEL	WEIGHT	CC	HITCH	FRESH WATER	WASTE WATER	GRAY WATER	LPG	LENGTH*	HEIGHT
2020QB	4279	2221	515	52	30	30	40	24' 10"	10' 6"
2200MB	5437	2233	670	52	30	78	40	26' 2"	11' 1"
2450RB	5033	2567	600	52	39	69	40	27' 11"	10' 6"
2570RL	6005	1610	615	52	39	69	40	29' 8"	10' 6"
2600TB	4861	2649	510	52	39	30	40	28' 10"	10' 6"
2660RL	6051	1594	645	52	39	39	40	28' 11"	10' 11"
2720BH	6145	1485	630	52	39	39	40	31' 4"	10' 6"
2820BH	6597	2003	690	52	39	69	40	32' 1"	11' 3"
2830RK	6615	2185	830	52	30	69	40	33' 4"	10' 11"
2960BH	6701	3019	920	52	30	39	40	33' 2"	10' 11"
2980BH	6665	2875	740	52	30	39	40	32' 7"	10' 11"
3030BH	7641	2089	930	52	39	39	40	34' 11"	10' 11"
1700FQ	3235	1205	480	27	30	32	20	21' 5"	10' 2"
1750RD	3295	1105	520	27	30	30	20	21' 5"	10' 2"
1800BH	3285	1115	485	27	30	30	20	21' 5"	10' 2"
1850FL	3350	1100	465	27	30	30	20	21' 5"	10' 2"

DISCLAIMER: Product information is as accurate as possible as of the date of publication of this brochure. All features, floor plans, and specifications in this brochure are subject to change without notice. Please also consult Keystone's web site at [www.keystonecv.com](http://www.keystonecv.com) for more current product information and specifications. Tow Vehicle Disclaimer: CAUTION: Owners of Keystone recreational vehicles are solely responsible for the selection and proper use of tow vehicles. All customers should consult with a motor vehicle manufacturer or their dealer concerning the purchase and use of suitable tow vehicles for Keystone products. Keystone disclaims any liability or damages suffered as a result of the selection, operation, use or misuse of a tow vehicle. KEYSTONE'S LIMITED WARRANTY DOES NOT COVER DAMAGE TO THE RECREATIONAL VEHICLE OR THE TOW VEHICLE AS A RESULT OF THE SELECTION, OPERATION, USE OR MISUSE OF THE TOW VEHICLE. \*Length is defined as the distance from the centerline of hitch pin/coupler to rear bumper of trailer.



# SPECIFICATIONS

## SPRINGDALE TRAVEL TRAILERS

MODEL	WEIGHT	CC	HITCH	FRESH WATER	WASTE WATER	GRAY WATER	LPG	LENGTH*	HEIGHT
235RB	6069	1726	795	52	39	78	60	27' 5"	11' 3"
240BH	6407	1593	735	52	39	69	60	28' 11"	11' 3"
252RL	6300	2700	710	52	39	39	60	29' 11"	11' 3"
262RK	6450	1300	780	52	30	78	60	30' 2"	11' 3"
270LE	6920	2665	785	52	39	60	60	32' 11"	11' 3"
271RL	7065	2635	935	52	39	30	60	31' 10"	11' 3"
280BH	7115	2485	805	52	39	60	60	32' 11"	11' 3"
287RB	7781	1954	935	52	39	69	60	32' 10"	11' 3"
303BH	8086	1684	970	52	39	39	60	35' 0"	11' 4"
311RE	8343	1417	960	52	39	78	60	35' 7"	10' 11"
332RB	9263	2112	1215	52	30	78	60	37' 7"	10' 11"
333RE	9200	2090	1095	52	39	69	60	37' 3"	10' 11"
38BH	8661	2494	995	56	39	69	60	38' 11"	11' 4"
38FL	8587	2518	945	56	39	69	60	38' 11"	11' 4"
38FQ	8628	2507	975	56	39	69	60	38' 11"	11' 4"

## SPRINGDALE FIFTH WHEELS

MODEL	WEIGHT	CC	HITCH	FRESH WATER	WASTE WATER	GRAY WATER	LPG	LENGTH*	HEIGHT
253FWRE	8493	1807	1500	52	39	39	60	32' 10"	11' 10"
278FWRL	8157	2038	1395	52	39	39	60	31' 0"	11' 10"
300FWBH	8595	1755	1555	52	69	78	60	34' 10"	11' 4"
302FWRK	8880	1440	1520	52	39	78	60	33' 9"	11' 4"

## SS TRAVEL TRAILERS & SINGLE AXLES

MODEL	WEIGHT	CC	HITCH	FRESH WATER	WASTE WATER	GRAY WATER	LPG	LENGTH*	HEIGHT
2020QB	4279	2221	515	52	30	30	40	24' 10"	10' 6"
2200MB	5437	2233	670	52	30	78	40	26' 2"	11' 1"
2450RB	5033	2567	600	52	39	69	40	27' 11"	10' 6"
2570RL	6005	1610	615	52	39	69	40	29' 8"	10' 6"
2600TB	4861	2649	510	52	39	30	40	28' 10"	10' 6"
2660RL	6051	1594	645	52	39	39	40	28' 11"	10' 11"
2720BH	6145	1485	630	52	39	39	40	31' 4"	10' 6"
2820BH	6597	2003	690	52	39	69	40	32' 1"	11' 3"
2930RK	6615	2185	830	52	30	69	40	33' 4"	10' 11"
2960BH	6701	3019	920	52	30	39	40	33' 2"	10' 11"
2980BH	6665	2875	740	52	30	39	40	32' 7"	10' 11"
3030BH	7641	2089	930	52	39	39	40	34' 11"	10' 11"
1700FQ	3235	1205	480	27	30	32	20	21' 5"	10' 2"
1750RD	3295	1105	520	27	30	30	20	21' 5"	10' 2"
1800BH	3285	1115	485	27	30	30	20	21' 5"	10' 2"
1850FL	3350	1100	465	27	30	30	20	21' 5"	10' 2"

DISCLAIMER: Product information is as accurate as possible as of the date of publication of this brochure. All features, floor plans, and specifications in this brochure are subject to change without notice. Please also consult Keystone's web site at [www.keystonecv.com](http://www.keystonecv.com) for more current product information and specifications. Tow Vehicle Disclaimer: CAUTION: Owners of Keystone recreational vehicles are solely responsible for the selection and proper use of tow vehicles. All customers should consult with a motor vehicle manufacturer or their dealer concerning the purchase and use of suitable tow vehicles for Keystone products. Keystone disclaims any liability or damages suffered as a result of the selection, operation, use or misuse of a tow vehicle. KEYSTONE'S LIMITED WARRANTY DOES NOT COVER DAMAGE TO THE RECREATIONAL VEHICLE OR THE TOW VEHICLE AS A RESULT OF THE SELECTION, OPERATION, USE OR MISUSE OF THE TOW VEHICLE. \*Length is defined as the distance from the centerline of hitch pin/coupler to rear bumper of trailer.



## STANDARDS & OPTIONS

	SPRINGDALE TT	SPRINGDALE FW	SS TT	MINI
<b>EXTERIOR</b>				
LAMINATED FIBERGLASS SIDEWALLS	-	S	-	-
ELECTRIC ADJUSTABLE FRONT LANDING GEAR	-	S	-	-
DIAMOND PLATE	S	-	S	S
ADJUSTABLE POWER AWNING	S	S	S	-
MANUAL PATIO AWNING	-	-	-	S
OUTSIDE 110 RECEPTACLE	S	S	S	S
ALUMINUM WHEELS	O	O	O	-
POWER TONGUE JACK	O	-	O	-
X-ENTRY ASSIST HANDLE	S	S	-	-
ARCTIC PACKAGE (EXCLUDES: 2600TB, 2020QB)	S	S	S	-
POWDER COATED I-BEAM FRAME	S	S	S	-
EASY ULTRA-LUBE AXLES	S	S	S	S
FULL LENGTH OUTRIGGERS ON FRAME	S	S	S	S
DUAL BATTERY RACK	S	S	S	-
TWO 30 LB. LP BOTTLES	S	S	-	-
2 EXTERIOR SPEAKERS	S	S	S	S
TV ANTENNA WITH BOOSTER	S	S	S	S
OVERSIZED PASS THRU STORAGE	S	S	S	S
HURRICANE STRAPS REINFORCED STRUCTURE	S	S	S	S
FOUR HEAVY DUTY STABILIZER JACKS	O	-	O	O
TWO HEAVY DUTY STABILIZER JACKS	-	S	-	S
LIONSHED NITRO FILLED TIRES	S	S	S	S
CAMBERED CHASSIS	S	S	S	S
96" EXTERIOR WIDTH	S	S	S	S
EXTERIOR SHOWER	S	S	S	-
SPARE TIRE AND CARRIER	O	O	O	O
E-Z OPEN ENTRY STEP	-	-	S	S
ALUMINUM ENTRY STEP	S	S	-	-
50 AMP SERVICE W/DETACHABLE CORD (SELECT MODELS)	S	S	-	-
BLACK TANK FLUSH (EXCLUDES 270LE)	S	S	-	-
<b>INTERIOR</b>				
MINI BLINDS	-	-	S	S
TRI-FOLD SLEEPER SOFA (SELECT MODELS)	O	O	-	-
JACKNIFE SOFA BED	O	O	S	S
LARGE MEDICINE CABINET	S	S	S	S
PLEATED NIGHTSHADES IN LIVING AREA	S	S	-	-
FULL STRUTTED STORAGE UNDER MASTER BED	S	S	-	-
NIGHTSTAND W/DRAWER IN BED ROOM	S	S	-	-
32" TV (39" ON SOME MODELS)	O	O	O	-
2 INTERIOR SPEAKERS	S	S	S	S
AM/FM BLUETOOTH STEREO	-	-	-	S
FURRION ENTERTAINMENT SYSTEM	S	S	S	-
RESIDENTIAL MICROWAVE	S	S	S	S
MONITOR PANEL	S	S	S	S
7 CU. FT. REFRIGERATOR	S	S	-	-
6 CU. FT. REFRIGERATOR	-	-	S	-
RESIDENTIAL REFRIGERATOR (38BH, 38FL, 38FQ ONLY)	S	-	-	-

	SPRINGDALE TT	SPRINGDALE FW	SS TT	MINI
<b>INTERIOR (CONT.)</b>				
3.2 CU. FT. GAS/ELECTRIC REFER	-	-	-	S
BALL BEARING DRAWER GUIDES	S	S	S	S
REVERSIBLE DINETTE CUSHIONS	S	S	S	S
HIGH RISE KITCHEN FAUCET	S	S	S	-
HIGH IMPACT ACRYLIC SINK	S	S	S	S
18" OVEN W/3 BURNER COOKTOP	S	S	S	-
2 BURNER COOKTOP	-	-	-	S
FREESTANDING TABLE & CHAIRS (SELECT MODELS)	O	O	-	-
*DO MORE DINETTE* TABLE (SELECT MODEL S)	S	S	-	-
12 VOLT 55 AMP CONVERTER	S	S	S	-
15,000 BTU AIR CONDITIONER	O	O	O	-
13,500 BTU AIR CONDITIONER	S	S	S	O
8K BTU AIR CONDITIONER	-	-	-	S
FORCED AIR DSI 30K BTU FURNACE W/THERMOSTAT (DUCTED MOST MODELS) (EXCLUDING 2020, 2600)	S	S	S	-
20K BTU FURNACE	-	-	-	S
6 GAL. GAS/ELECTRIC DSI WATER HEATER	S	S	S	S
SKYLIGHT OVER TUB/SHOWER	S	S	-	-
FLEX PEX TUBING WITH 10 YEAR WARRANTY	S	S	S	S
82" VAULTED CEILING	S	-	-	-
TUB SURROUND	S	S	S	-
FOOT FLUSH TOILET	S	S	S	S
RG6 CABLE AND SATELLITE WIRING	S	S	S	S
2X3 FLOOR CONSTRUCTION 12" OC W/5/8TH DECKING	S	S	S	S
16" ON CENTER RAISED ROOF TRUSS SYSTEM	S	S	S	S
41/2" CROWNED ROOF	S	S	S	S
16" ON CENTER SIDE WALLS	S	S	S	S
R-7 INSULATION-FLOOR, ROOF, WALLS	S	S	S	S
SUMMER PACKAGE *	-	-	S	-
<b>SAFETY</b>				
FIRE EXTINGUISHER	S	S	S	S
SMOKE DETECTOR	S	S	S	S
LP DETECTOR	S	S	S	S
CO DETECTOR	S	S	S	S
SAFETY CHAINS	S	S	S	S
EMERGENCY BRAKE-A-WAY SWITCH	S	S	S	S

### » SUMMERLAND SUMMER PACKAGE \*

- Outdoor Shower
- 6 Gal. Gas/Electric DSI Water Heater
- RG6 Cable and Satellite Wiring
- 2 - 20# LP Tanks w/Cover
- Tub Surround

SPRINGDALE TT = SPRINGDALE TRAVEL TRAILERS  
 SPRINGDALE FW = SPRINGDALE FIFTH WHEELS  
 SS TT = SUMMERLAND SERIES TRAVEL TRAILERS  
 MINI = SPRINGDALE SINGLE AXLE TRAVEL TRAILERS

S STANDARD O OPTIONAL - NOT AVAILABLE



# STANDARDS & OPTIONS

EXTERIOR	SPRINGDALE TT	SPRINGDALE FW	SS TT	MINI
LAMINATED FIBERGLASS SIDEWALLS	-	S	-	-
ELECTRIC ADJUSTABLE FRONT LANDING GEAR	-	S	-	-
DIAMOND PLATE	S	-	S	S
ADJUSTABLE POWER AWNING	S	S	S	-
MANUAL PATIO AWNING	-	-	-	S
OUTSIDE 110 RECEPTACLE	S	S	S	S
ALUMINUM WHEELS	O	O	O	-
POWER TONGUE JACK	O	-	O	-
XL ENTRY ASSIST HANDLE	S	S	-	-
ARCTIC PACKAGE (EXCLUDES: 2600TB, 2020QB)	S	S	S	-
POWDER COATED I-BEAM FRAME	S	S	S	-
EASY ULTRA-LUBE AXLES	S	S	S	S
FULL LENGTH OUTRIGGERS ON FRAME	S	S	S	S
DUAL BATTERY RACK	S	S	S	-
TWO 30 LB. LP BOTTLES	S	S	-	-
2 EXTERIOR SPEAKERS	S	S	S	S
TV ANTENNA WITH BOOSTER	S	S	S	S
OVERSIZED PASS THRU STORAGE	S	S	S	S
HURRICANE STRAPS REINFORCED STRUCTURE	S	S	S	S
FOUR HEAVY DUTY STABILIZER JACKS	O	-	O	O
TWO HEAVY DUTY STABILIZER JACKS	-	S	-	S
LIONSHEAD NITRO FILLED TIRES	S	S	S	S
CAMBERED CHASSIS	S	S	S	S
96" EXTERIOR WIDTH	S	S	S	S
EXTERIOR SHOWER	S	S	S	-
SPARE TIRE AND CARRIER	O	O	O	O
E-Z OPEN ENTRY STEP	-	-	S	S
ALUMINUM ENTRY STEP	S	S	-	-
50 AMP SERVICE W/DETACHABLE CORD (SELECT MODELS)	S	S	-	-
BLACK TANK FLUSH (EXCLUDES 270LE)	S	S	-	-
INTERIOR				
MINI BLINDS	-	-	S	S
TRI-FOLD SLEEPER SOFA (SELECT MODELS)	O	O	-	-
JACKNIFE SOFA BED	O	O	S	S
LARGE MEDICINE CABINET	S	S	S	S
PLEATED NIGHT SHADES IN LIVING AREA	S	S	-	-
FULL STRUTTED STORAGE UNDER MASTER BED	S	S	-	-
NIGHTSTAND W/DRAWER IN BEDROOM	S	S	-	-
32" TV (39" ON SOME MODELS)	O	O	O	-
2 INTERIOR SPEAKERS	S	S	S	S
AM/FM BLUETOOTH STEREO	-	-	-	S
FURRION ENTERTAINMENT SYSTEM	S	S	S	-
RESIDENTIAL MICROWAVE	S	S	S	S
MONITOR PANEL	S	S	S	S
7 CU. FT. REFRIGERATOR	S	S	-	-
6 CU. FT. REFRIGERATOR	-	-	S	-
RESIDENTIAL REFRIGERATOR (38BH, 38FL, 38FQ ONLY)	S	-	-	-

INTERIOR (CONT.)	SPRINGDALE TT	SPRINGDALE FW	SS TT	MINI
3.2 CU. FT. GAS/ELECTRIC REFER	-	-	-	S
BALL BEARING DRAWER GUIDES	S	S	S	S
REVERSIBLE DINETTE CUSHIONS	S	S	S	S
HIGH RISE KITCHEN FAUCET	S	S	S	-
HIGH IMPACT ACRYLIC SINK	S	S	S	S
18" OVEN W/3 BURNER COOKTOP	S	S	S	-
2 BURNER COOKTOP	-	-	-	S
FREESTANDING TABLE & CHAIRS (SELECT MODELS)	O	O	-	-
"DO MORE DINETTE" TABLE (SELECT MODELS)	S	S	-	-
12 VOLT 55 AMP CONVERTER	S	S	S	-
15,000 BTU AIR CONDITIONER	O	O	O	-
13,500 BTU AIR CONDITIONER	S	S	S	O
8K BTU AIR CONDITIONER	-	-	-	S
FORCED AIR DSI 30K BTU FURNACE W/THERMOSTAT (DUCTED MOST MODELS) (EXCLUDING 2020, 2600)	S	S	S	-
20K BTU FURNACE	-	-	-	S
6 GAL. GAS/ELECTRIC DSI WATER HEATER	S	S	S	S
SKYLIGHT OVER TUB/SHOWER	S	S	-	-
FLEX PEX TUBING WITH 10 YEAR WARRANTY	S	S	S	S
82" VAULTED CEILING	S	-	-	-
TUB SURROUND	S	S	S	-
FOOT FLUSH TOILET	S	S	S	S
RG6 CABLE AND SATELLITE WIRING	S	S	S	S
2X3 FLOOR CONSTRUCTION 12" OC W/5/8TH DECKING	S	S	S	S
16" ON CENTER RAISED ROOF TRUSS SYSTEM	S	S	S	S
4 1/2" CROWNED ROOF	S	S	S	S
16" ON CENTER SIDE WALLS	S	S	S	S
R-7 INSULATION-FLOOR, ROOF, WALLS	S	S	S	S
SUMMER PACKAGE *	-	-	S	-
SAFETY				
FIRE EXTINGUISHER	S	S	S	S
SMOKE DETECTOR	S	S	S	S
LP DETECTOR	S	S	S	S
CO DETECTOR	S	S	S	S
SAFETY CHAINS	S	S	S	S
EMERGENCY BRAKE-A-WAY SWITCH	S	S	S	S

## » SUMMERLAND SUMMER PACKAGE \*

- Outdoor Shower
- 6 Gal. Gas/Electric DSI Water Heater
- RG6 Cable and Satellite Wiring
- 2 - 20# LP Tanks w/Cover
- Tub Surround

SPRINGDALE TT = SPRINGDALE TRAVEL TRAILERS  
 SPRINGDALE FW = SPRINGDALE FIFTH WHEELS  
 SS TT = SUMMERLAND SERIES TRAVEL TRAILERS  
 MINI = SPRINGDALE SINGLE AXLE TRAVEL TRAILERS

S STANDARD O OPTIONAL - NOT AVAILABLE



# Springdale

EASTERN  
BY KEYSTONE

# Springdale

SS



**THE ONLY 2017  
QUALITY CIRCLE AWARD WINNER  
IN ITS CATEGORY  
2 YEARS AND RUNNING...**



BISCOTTI DECOR



BISTRO DECOR



LATTE DECOR



## PURCHASING YOUR RV LOCALLY

It's up to you where you purchase your new Springdale, but may we suggest your local dealer? Not only does it help your local economy and provide jobs, but it will also give you an opportunity to develop a service relationship with someone that will come to know you and your coach. Congratulations on finding the best built, best equipped and best value in the industry. Happy travels!

### YOUR LOCAL DEALER IS:

Colton RV & Marine  
3122 Niagara Falls Blvd  
North Tonawanda, NY 14120  
(716) 694-0188  
[www.ColtonRV.com](http://www.ColtonRV.com)

Colton RV & Marine  
3443 Southwestern Blvd.  
Orchard Park, NY 14127  
(716) 957-3250  
[www.Coltonrv.com](http://www.Coltonrv.com)

JANUARY 2018



**Keystone RV  
Company**

[WWW.KEYSTONERV.COM](http://WWW.KEYSTONERV.COM)  
574.535.2100 • 2642 HACKBERRY DRIVE  
P.O. BOX 2000 • GOSHEN, IN 46527



Go RVing

DISCLAIMER: Product information is as accurate as possible as of the date of publication of this brochure. All features, floor plans, and specifications in this brochure are subject to change without notice. Please also consult Keystone's web site at [www.keystonerv.com](http://www.keystonerv.com) for more current product information and specifications. Tow Vehicle Disclaimer. CAUTION: Owners of Keystone recreational vehicles are solely responsible for the selection and proper use of tow vehicles. All customers should consult with a motor vehicle manufacturer or their dealer concerning the purchase and use of suitable tow vehicles for Keystone products. Keystone disclaims any liability or damages suffered as a result of the selection, operation, use or misuse of a tow vehicle. KEYSTONE'S LIMITED WARRANTY DOES NOT COVER DAMAGE TO THE RECREATIONAL VEHICLE OR THE TOW VEHICLE AS A RESULT OF THE SELECTION, OPERATION, USE OR MISUSE OF THE TOW VEHICLE. \*Length is defined as the distance from the centerline of hitch pin/coupler to rear bumper of trailer.

A BETTER WAY TO CAMP | [WWW.KEYSTONERV.COM/SPRINGDALE](http://WWW.KEYSTONERV.COM/SPRINGDALE)



# Springdale

**EASTERN EDITION**  
by Keystone

# Springdale

by Keystone

SS



**THE ONLY 2017  
QUALITY CIRCLE AWARD WINNER  
IN ITS CATEGORY  
2 YEARS AND RUNNING...**



BISCOTTI DECOR



BISTRO DECOR



LATTE DECOR



## PURCHASING YOUR RV LOCALLY

It's up to you where you purchase your new Springdale, but may we suggest your local dealer? Not only does it help your local economy and provide jobs, but it will also give you an opportunity to develop a service relationship with someone that will come to know you and your coach. Congratulations on finding the best built, best equipped and best value in the industry. Happy travels!

### YOUR LOCAL DEALER IS:

Colton RV & Marine  
3122 Niagara Falls Blvd  
North Tonawanda, NY 14120  
(716) 694-0188  
[www.ColtonRV.com](http://www.ColtonRV.com)

Colton RV & Marine  
3443 Southwestern Blvd.  
Orchard Park, NY 14127  
(716) 957-3250  
[www.Coltonrv.com](http://www.Coltonrv.com)

JANUARY 2018



**Keystone RV  
Company**

[WWW.KEYSTONERV.COM](http://WWW.KEYSTONERV.COM)  
574.535.2100 • 2642 HACKBERRY DRIVE  
P.O. BOX 2000 • GOSHEN, IN 46527



Go RVing.

DISCLAIMER: Product information is as accurate as possible as of the date of publication of this brochure. All features, floor plans, and specifications in this brochure are subject to change without notice. Please also consult Keystone's web site at [www.keystonerv.com](http://www.keystonerv.com) for more current product information and specifications. Tow Vehicle Disclaimer. CAUTION: Owners of Keystone recreational vehicles are solely responsible for the selection and proper use of tow vehicles. All customers should consult with a motor vehicle manufacturer or their dealer concerning the purchase and use of suitable tow vehicles for Keystone products. Keystone disclaims any liability or damages suffered as a result of the selection, operation, use or misuse of a tow vehicle. KEYSTONE'S LIMITED WARRANTY DOES NOT COVER DAMAGE TO THE RECREATIONAL VEHICLE OR THE TOW VEHICLE AS A RESULT OF THE SELECTION, OPERATION, USE OR MISUSE OF THE TOW VEHICLE. \*Length is defined as the distance from the centerline of hitch pin/coupler to rear bumper of trailer.

A BETTER WAY TO CAMP | [WWW.KEYSTONERV.COM/SPRINGDALE](http://WWW.KEYSTONERV.COM/SPRINGDALE)