



2024 PRODUCT OFFERING

CATALINA

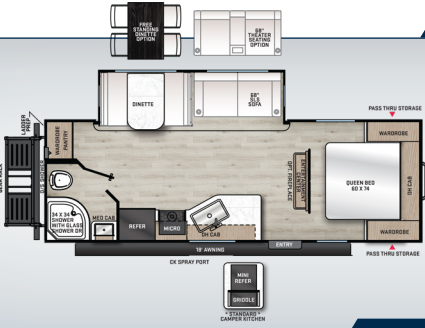


SUMMIT SERIES 7 · SUMMIT SERIES 8 · EXPEDITION · LEGACY EDITION · TRAIL BLAZER · DESTINATION SERIES

LEGACY EDITION

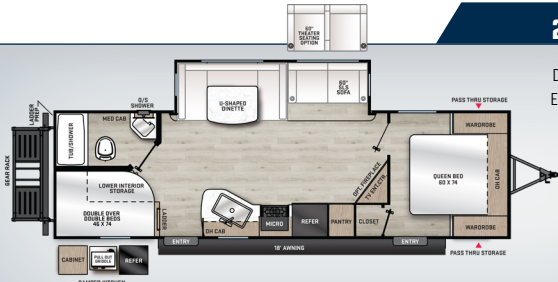
243 RBS

DRY WEIGHT: **5,528**
EXT. LENGTH: **28' 9"**



263 BHSC

DRY WEIGHT: **6,472**
EXT. LENGTH: **32' 9"**



263 FKDS

DRY WEIGHT: **6,810**
EXT. LENGTH: **29' 11 7/8"**



283 RKS

DRY WEIGHT: **6,576**
EXT. LENGTH: **33' 8"**



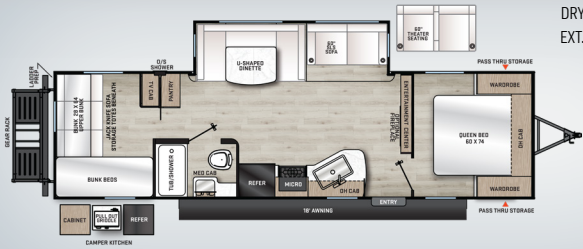
283 FEDS

DRY WEIGHT: **8,004**
EXT. LENGTH: **35' 11 7/8"**



293 QBCK

DRY WEIGHT: **6,824**
EXT. LENGTH: **34' 2"**



293 TQBSCK

DRY WEIGHT: **7,462**
EXT. LENGTH: **36' 0"**



303 RKDS

DRY WEIGHT: **7,982**
EXT. LENGTH: **36' 11"**



313 RLTS

DRY WEIGHT: **8,316**
EXT. LENGTH: **36' 5"**



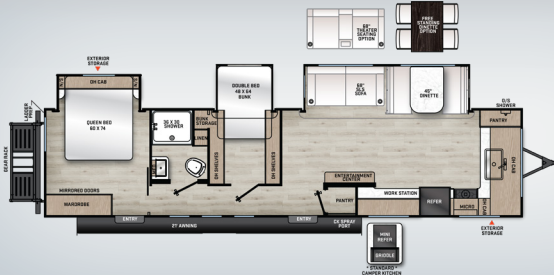
323 BHDSC

DRY WEIGHT: **7,804**
EXT. LENGTH: **36' 8"**



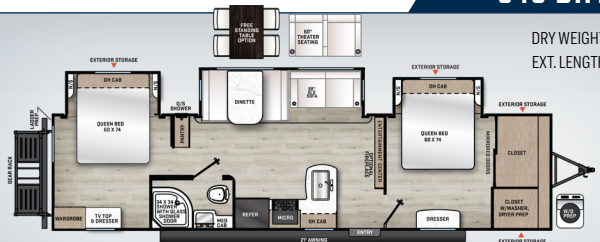
333 FKTS

DRY WEIGHT: **TBD**
EXT. LENGTH: **TBD**



343 BHTS(2Q)

DRY WEIGHT: **8,438**
EXT. LENGTH: **38' 6"**



LEGACY EDITION

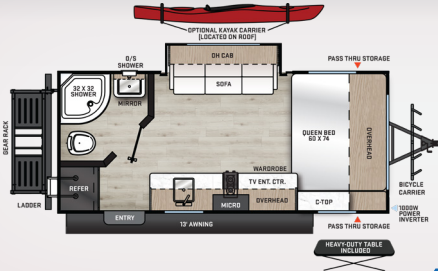
343 BHTS

DRY WEIGHT: **8,618**
EXT. LENGTH: **38' 6"**



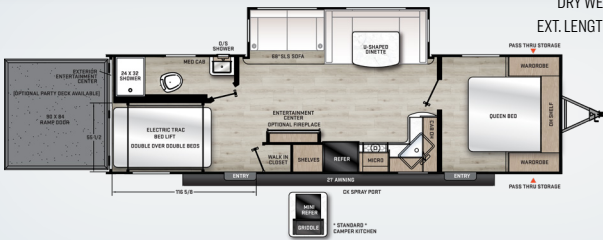
192 FQS

DRY WEIGHT: **4,092** EXT.
LENGTH: **21' 8"**



27 THS

DRY WEIGHT: **7,412**
EXT. LENGTH: **33' 10"**



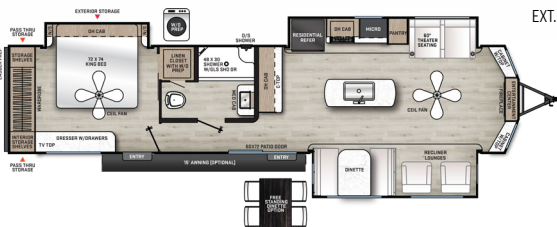
29 THS

DRY WEIGHT: **7,022**
EXT. LENGTH: **35' 8"**



39 MKTS

DRY WEIGHT: **9,480**
EXT. LENGTH: **40' 11"**



40 BHTS

DRY WEIGHT: **9,610**
EXT. LENGTH: **40' 11"**

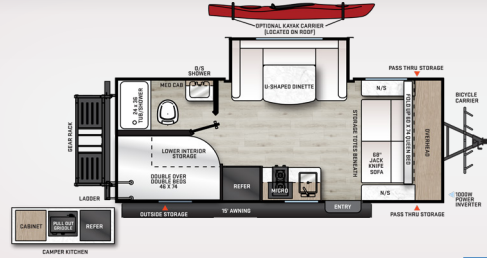


EXPEDITION

NEW

192 BHS

DRY WEIGHT: **4,536**
EXT. LENGTH: **23' 6"**



TRAILBLAZER

26 TH

DRY WEIGHT: **5,427**
EXT. LENGTH: **30' 0"**



28 THS

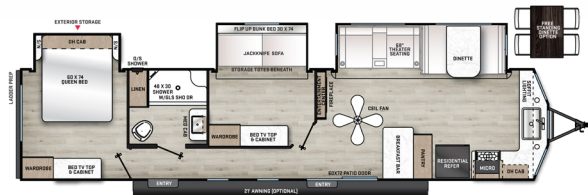
DRY WEIGHT: **7,166**
EXT. LENGTH: **33' 10"**



DESTINATION

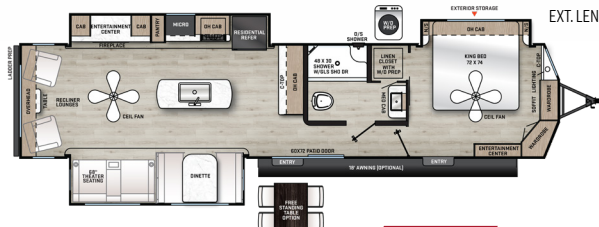
39 FKTS

DRY WEIGHT: **9,350**
EXT. LENGTH: **40' 11"**



39 RLTS

DRY WEIGHT: **9,702**
EXT. LENGTH: **40' 11"**



NEW

40 BHTS(2Q)

DRY WEIGHT: **TBD**
EXT. LENGTH: **TBD**



SUMMIT 7

NEW

154 RBX

DRY WEIGHT: **3,009**
EXT. LENGTH: **19' 6"**



NEW

154 RDX

DRY WEIGHT: **TBD**
EXT. LENGTH: **19' 6"**



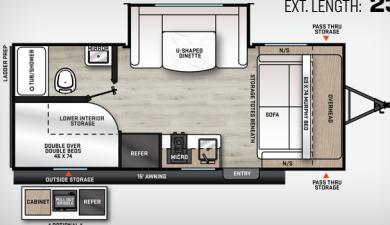
164BHX

DRY WEIGHT: **2,950**
EXT. LENGTH: **19' 6"**



184 BHS

DRY WEIGHT: **4,162**
EXT. LENGTH: **23' 1"**



NEW

184 RBS

DRY WEIGHT: **TBD**
EXT. LENGTH: **TBD**



SUMMIT 8

NEW

221 MKE

DRY WEIGHT: **5341**
EXT. LENGTH: **25' 11"**



231 MKS

DRY WEIGHT: **5,042**
EXT. LENGTH: **28' 2"**



261 BH

DRY WEIGHT: **4,763**
EXT. LENGTH: **29' 11"**



261 BHS

DRY WEIGHT: **5,482**
EXT. LENGTH: **30' 5"**



271 DBS

DRY WEIGHT: **6,240**
EXT. LENGTH: **33' 2"**



NOTES:



#coachmencatalina
#coachmenRV



Coachmen
Recreational Vehicles

YOUR CATALINA DEALER



Learn More
Scan this barcode using
a QR Reader on your
smart phone to learn
more about Forest River.



A Berkshire Hathaway company.

Coachmen Industries
423 N. Main St.,
Middlebury, IN 46540
Phone: 574-825-5821

Colton RV & Marine
3122 Niagara Falls Blvd
North Tonawanda, NY 14120
(716) 694-0188
www.ColtonRV.com

Colton RV & Marine
3443 Southwestern Blvd.
Orchard Park, NY 14127
(716) 957-3250
www.Coltonrv.com

All information contained in this brochure is believed to be accurate at the time of publication. However, during the model year, it may be necessary to make revisions and Forest River, Inc., reserves the right to make all such changes without notice, including prices, colors, materials, equipment and specifications as well as the addition of new models and the discontinuance of models shown in this brochure. Therefore, please consult with your Forest River, Inc., dealer and confirm the existence of any materials, design or specifications that are material to your purchase decision. To learn more about Coachmen RV and our products and see how Coachmen is leading the great outdoors, visit www.coachmenrv.com