

ULTRA LITE • LIBERTY • MAPLE LEAF • SELECT

FREEDOM EXPRESS

ULTRA LITE • LIBERTY • MAPLE LEAF • SELECT

YOUR ADVENTURE AWAITS



Coachmen
Recreational Vehicles

A division of Forest River, Inc.

FREEDOM EXPRESS



#FreedomToExplore

FREEDOM EXPRESS

Ultra Lite Towability – Proven Construction That Lasts



259 FKDS



Freedom Express is one of Coachmen RV's most popular brands with time-tested construction, combined with customer driven innovations. We focus on offering a wide selection of incredibly lightweight and durable travel trailers. These Ultra Lite RVs are ideal for towing with half-ton pick-up trucks and SUVs for maximum fuel efficiency. All models are built with lightweight, corrosion resistant, Alumicage™ construction utilizing aircraft grade aluminum material throughout the walls for superior strength. Plus, Azdel Onboard® composite wall panels withstand rot, mold and water damage for years of worry-free use.

259 FKDS

Explore our selection for the ultimate in safety and reliability:

- Freedom Express Ultra Lites – Packed with industry leading features.
- Liberty/Maple Leaf Editions – Include high end amenities usually reserved for travel trailers and fifth wheels costing thousands more.
- Select – Value added light weights.

A Proud History of Quality and Value...Coachmen RV, a brand you can trust!

Coachmen RV products have been on US roads and highways since 1964. Since then, over 750,000 Coachmen recreational vehicles have been produced. In December 2008, Coachmen RV became a proud brand of Forest River, Inc., a Berkshire Hathaway Company. We're headquartered in Middlebury, Indiana with our primary manufacturing facilities on nearly 120 acres, and approximately 13 acres under roof.





STRETCH OUT & RELAX

BUILT BETTER

Stable-Ryd® Suspension

- Spread axle improves weight distribution.
- Wide track axles provide a wider, more secure stance on the road.
- Spread axle design allows us to reduce the tongue weight for optimum performance.
- Spread axle design reduces sway caused by crosswinds.

Lightweight

- Laminated sidewalls, rear wall and floor
- Azdel composite panels behind the fiberglass
- Bow trusses aluminum and wood
- Rod and angle crossmembers in frame
- All tanks mounted under floor to lower center of gravity and improve interior storage.

Aerodynamic

- Aerodynamic front profile (Cuts through the air)
- Enclosed underbelly reduces turbulence/drag.

Construction

1. Crowned trusses
2. Aluminum reinforced with 3/8" roof decking
3. Tufflex PVC roofing (with 20 year warranty)
4. Azdel composite panels
5. Welded aluminum structure, vacuum-bonded sidewalls, rear wall and floor
6. Aluminum framed openings
7. Fully welded tubular aluminum floor structure
8. Powder E-coated, welded I-beam frame
9. Dexter® E-Z Lube® axles
10. Stable-Ryd® spread axle design (25' and above)



PUT TO THE TEST

Every Freedom Express unit undergoes rigorous testing before delivery, to ensure customer satisfaction.

- All tanks are filled with water and then drained, to check for leaks. Toilets and showers

are filled with water and drained, to assure the underbelly has no leaks.

- All appliances undergo hy-pot testing. The hy-pot test sends quick, high voltage through all electrical lines, to make sure all lines are clear and appliances are working properly. An additional continuity test is conducted to make sure there are no shorts and the unit is grounded.
- Finally, every Freedom Express is Seal Tech tested to check for exterior leaks. The unit is completely closed and pressurized with up to 40 pounds of air, then hand sprayed with soapy water. Bubbles indicate a leak. Any detected leaks are repaired and the unit is retested. Once the unit passes these inspections, and is weighed, it's ready for delivery.

Exterior Features



Stable-Ryd® Spread Axles provide better weight distribution, handling and improved towing.



Approximately 48 Cu. Ft. of Fully Lighted Pass thru Storage with a 24" x 48" outdoor resin table stored above.



Solid fold-in steps are standard on Freedom, Liberty and Maple Leaf models.



As a certified green RV, we utilize effective production techniques combined with healthy materials, plus efficient usage of energy and water to produce a high quality RV with less environmental impact.

Features and Options listed above may not be available on all models.



RV COMPOSITE PANELS
AZDEL
ONBOARD®

Lightweight Freedom Express features the combination of Azdel Onboard RV composite panels and AlumiCage Construction to maximize towability; both are environmentally friendly.

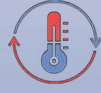
Azdel composite panels are produced using a patented blend of polypropylene and fiberglass to create a durable, lightweight, water and temperature resistant, odorless and environmentally friendly wall that will increase the life of your RV.



Weight Matters
50% Lighter
than wood



Let it Rain
No mold, rot,
mildew, warping
or delamination



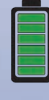
Unaffected by
changes in
temperature
& humidity



Twice the
thermal
insulation of
plywood



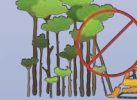
Free of
formaldehyde,
toxic odors
and chemicals



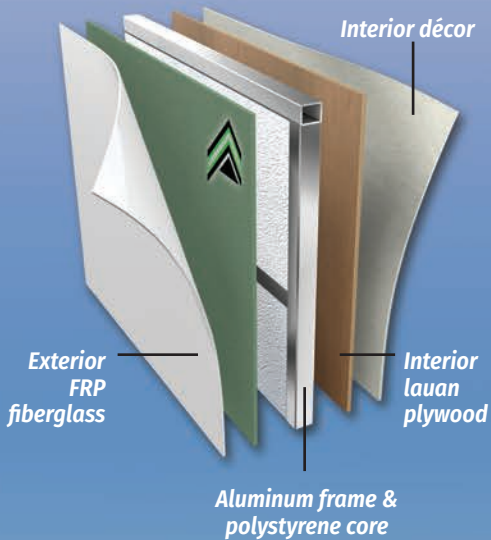
Longer
RV life



Quieter RVs



No deforestation



Knock on Wood

Traditional Luan Sidewall Panels:

- Absorb and retain water
- Affected by humidity and temperature changes
- Susceptible to mold, rot, warpage and delamination
- Imported
- Heavier
- Inferior thermal insulation and noise blocking

*A fully walkable roof
makes maintenance
and inspections
safe and easy.*



Avoid Costly Water Damage

- Water and wood don't mix
- Water can cause rot,

mold and delamination of wood
sidewall panels causing thousands
of dollars in damage.



Soak Test

- 60 Day soak test
- Wood has visible mold and decay requiring wall repair
- AZDEL was 100% unaffected

*Automotive
windshield
front cap*



*The 81" interior height throughout each
Freedom Express model results in taller slide
rooms and exceptional 14" overhead kitchen
cabinet storage. (Other brands have 12"
overhead cabinets.)*



*This exclusive utensil drawer provides
handy storage. Seamless Edge countertops
are standard on Freedom Express. Solid
surface countertops are standard on
Liberty and Maple Leaf.*

ULTRA LITE EDITION



192 RBS / Exterior Length 22' 5"



231 RBDS / Exterior Length 26' 9"



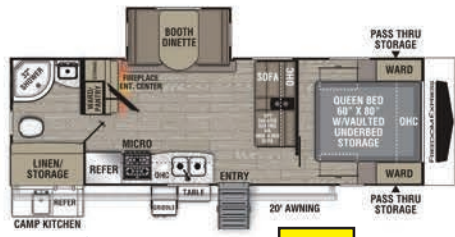
238 BHS / Exterior Length 25' 9"



246 RKS / Exterior Length 28' 2"



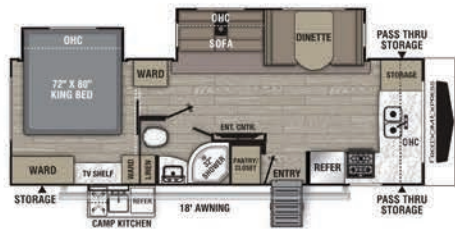
248 RBS / Exterior Length 28' 10"



252 RBS / Exterior Length 29' 7" **NEW**



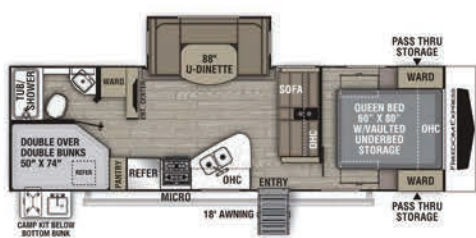
257 BHS / Exterior Length 28' 6"



259 FKDS / Exterior Length 29' 10"

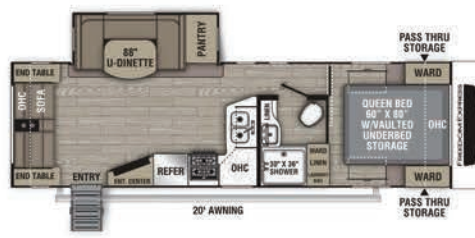


274 RKS / Exterior Length 31' 10"

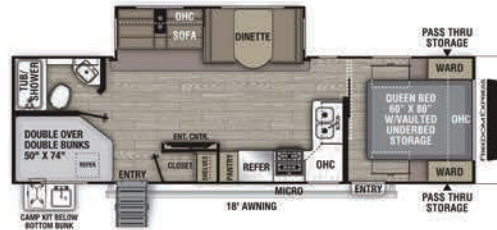


275 BHS / Exterior Length 31' 8"

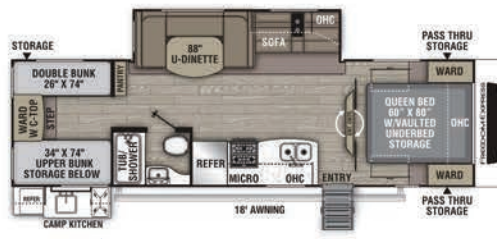
Freedom Express
Ultra Lite Travel Trailers are loaded with industry leading features in an affordable, value-packed RV, designed to be towed by today's midsize SUVs and half-ton vehicles. You're sure to find a floorplan that suits your style, whether you are going it alone, or taking the whole family.



279 RLDS / Exterior Length 31' 10"



287 BHDS / Exterior Length 32' 10"



292 BHDS / Exterior Length 33' 4"



294 BHDS / Exterior Length 33' 10"

DECOR

GRANITE

MARLIN

#FreedomToExplore



Pack up and go! Easy to lift vaulted queen bed storage includes drawers and under drawer shoe cubbies. (Vaulted bed storage is not available on slide out beds.)

Freedom Value Package

(Mandatory – Ultra Lite, Liberty/Maple Leaf)

3/4 Gel Coated Fiberglass Cap with Automotive Glass Windshield

Alumicage Construction

Vacuum Bonded Walls with Azdel Composite

Aluminum Wheels

Spare Tire

Detachable Power Cord

Power Awning with LED Light Strip

Tinted Safety Glass Windows

Front Diamond Plate

E-Z Lube® Axles

Spread Axle Design (N/A 192)

Heated/Enclosed Underbelly

Full Walk-on Roof

Tufflex PVC Roofing

Exterior Shower

Winterize Ready Kit

Black Tank Flush

Ducted Furnace and A/C (N/A 192)

Magnetic Compartment Door

24" x 48" Outdoor Table

TV and Radio Antenna (WiFi/4G prep)

Exterior TV Hook-up

Freedom Solar Ready

Back-up Camera Prep

Battery Disconnect

Aluminum Solid Steps

Pet Leash/Bottle Opener

81" Interior Height

AM/FM/HDMI/USB/Bluetooth Radio

2 Exterior/4 Interior Speakers

LED TV

LED Interior Lighting

Night Shades

Carefree Flooring

Hidden Hinge Cabinetry

Stainless Steel Sink with Cover

Microwave

Oven with 3-Burner Stove and Glass Top

Double Door Refrigerator

Utensil Drawer (N/A 195, 326)

60" x 80" Bed with Cover

USB Ports

Skylight/Power Vent in Bath

Porcelain Toilet

Friction Hinge Entry Door

Freedom Vaulted Bed Storage (N/A 238, 259, 321, 324)

RVIA

Ultra Lite Express Pack

(Required)

Power Tongue Jack

Griddle and Side Table

Ladder

8 Cu. Ft. Refrigerator

Ultra Lite Options

Interior Choice – Granite or Marlin

15K BTU Roof Air Conditioner

50 AMP Service with Second Air Conditioner Prep

Second 15K BTU Roof Air Conditioner Installed

Power Stabilizer Jacks (NA 192)

Hide-A-Bed Sofa (252, 259, 274, 279, 287, 292, 294)

Theater Seats with Heat, Massage and Lights (252, 259, 274, 279, 287, 292, 294)

12V 10 Cu. Ft. Refrigerator

Radiant Barrier Insulation Pack (Added R-value equivalent)

Murphy Bed (238 BHS required)

CSA Canadian Compliance

MEP Fee (REPLACES RVIA)

FREEDOM EXPRESS	192 RBS	231 RBDS	238 BHS	246 RKS	248 RBS	252 RBS	257 BHS	259 FKDS	274 RKS	275 BHS	279 RLDS	287 BHDS	292 BHDS	294 BHDS
UVW	4,442	5,074	5,314	4,700	5,574	6,020	5,263	6,494	TBD	5,881	5,802	6,314	6,426	TBD.
Hitch Weight	638	585	694	500	728	704	671	752	TBD	715	700	660	738	TBD
Carrying Capacity	1,558	2,426	2,286	2,300	1,926	1,580	2,237	2,506	TBD	1,719	1,798	1,286	1,274	TBD
Ext. Length (Incl. Bumper to Hitch)	22' 5"	26' 9"	25' 9"	28' 2"	28' 10"	29' 7"	28' 6"	29' 10"	31' 10"	31' 8"	31' 10"	32' 10"	33' 4"	33' 10"
Ext. Height (Incl. A/C)	10' 7"	11' 0"	11' 1"	11' 0"	11' 1"	11' 1"	11' 1"	11' 3"	TBD	11' 0"	11' 1"	11' 1"	11' 1"	TBD
Int. Height (Coach)	81"	81"	81"	81"	81"	81"	81"	81"	TBD	81"	81"	81"	81"	TBD
Awning Length	14'	14'	18'	18'	16'	20'	20'	18'	20'	16'	20'	18'	18'	20'
Water Cap. (Gal.)														
Fresh/Grey/Waste	50/35/35	50/35/35	50/35/35	50/35/35	50/35/35	50/35/35	50/35/35	50/70/35	TBD	50/35/35	50/35/35	50/70/35	50/35/35	TBD
Wheel Size	14"	14"	14"	14"	14"	14"	14"	18"	TBD	14"	14"	14"	14"	TBD
Axles	2800 lbs.	3500 lbs.	3500 lbs.	3500 lbs.	3500 lbs.	3500 lbs.	3500 lbs.	4400 lbs.	TBD	3500 lbs.	3500 lbs.	3500 lbs.	3500 lbs.	TBD
Tire Size	ST205/75R14D	ST205/75R14D	ST205/75R14D	ST205/75R14D	ST205/75R14D	ST205/75R14D	ST205/75R14D	ST225/75R15E	TBD	ST205/75R14D	ST205/75R14D	ST205/75R14D	ST205/75R14D	TBD

LIBERTY/MAPLE
LEAF EDITIONS

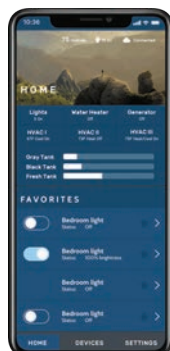
DECOR

GRANITE

MARLIN

ONE
Control®

Monitor and control
RV systems from
a convenient
smart phone app.



Freedom Express Liberty/Maple Leaf Edition Travel Trailers combine luxury amenities with popular floorplans in an affordable, value-added package designed for easy towing by today's midsize SUVs and half-ton vehicles.



292 BHSLE / Exterior Length 33' 4"



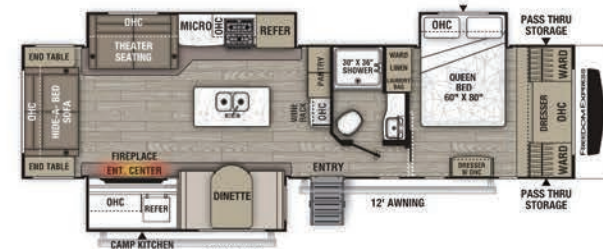
310 BHSLE / Exterior Length 35' 6"



320 BHSLE / Exterior Length 36' 10"



321 FEDSLE / Exterior Length 36' 10"



324 RLSLE / Exterior Length 36' 10"



326 BHSLE / Exterior Length 36' 10"

LIBERTY/MAPLE LEAF	292 BHSLE	310 BHSLE	320 BHSLE	321 FEDSLE	324 RLSLE	326 BHSLE
UVW	6,934	7,454	7,952	7,906	8,328	8,094
Hitch Weight	982	937	879	1,071	1,222	1,040
Carrying Capacity	2,566	2,446	2,548	2,594	2,172	2,406
Ext. Length (Incl. Bumper to Hitch)	33' 4"	35' 6"	36' 10"	36' 10"	36' 10"	36' 10"
Ext. Height (Incl. A/C)	11' 1"	11' 3"	11' 3"	11' 3"	11' 4"	11' 3"
Int. Height (Coach)	81"	81"	81"	81"	81"	81"
Awning Length	18'	18'	20'	17'	10', 12'	11', 8'
Water Capacity (Gal.)						
Fresh/Grey/Waste	50/35/35	50/35/35	50/70/35	50/65/35	50/35/35	50/70/70
Tire Size	ST225/75R15E	ST225/75R15E	ST225/75R15E	ST225/75R15E	ST225/75R15E	ST225/75R15E

* = ESTIMATED

LIBERTY/MAPLE LEAF UPGRADED PACKAGE

Liberty/Maple Leaf Editions include the Freedom Value Package (Page 7), plus these upgrades.

Liberty/Maple Leaf Upgrades

(Liberty/Maple Leaf only)

Full Fiberglass Front Cap with Automotive Glass Windshield
Front Rock Guard Graphics
Liberty/Maple Leaf Upgraded Graphics
Slam Latch Baggage Doors
Enclosed/Heated Gate valves
Security Light
Five-Point Stabilizer Power Tongue Jack System
Central Control Panel
LCI ONEControl® Smart Phone App
Solid Surface Kitchen Countertop with Sink Covers
Slotted Knife Storage
Kitchen Backsplash
Pull-out Faucet
Residential Light over Dinette
Hide-A-Bed Sofa
Fantastic Fan with Remote
Two Slider Pots and Pan Drawer under Dinette
8 Cu. Ft. Refrigerator

Designer Bedspread with Matching Pillows

Electric Fireplace

Roller Shades

Liberty/Maple Leaf Express Pack

(Required)

15K BTU Roof Air Conditioner

Ladder

Frameless Windows

Griddle and Side Table

Liberty/Maple Leaf Options

Interior Choice – Granite or Marlin

50 AMP Service with Second

Air Conditioner Prep

Second 15K BTU Roof Air Conditioner Installed

Radiant Barrier Insulation Pack (Added R-value equivalent)

12V 10 Cu. Ft. Refrigerator

Theater Seats with Heat, Massage and Lights (IPO Hide-a-Bed Sofa)

CSA Canadian Compliance - Inc. CSA

MEP Fee (REPLACES RVIA)



326 BHDSLE

Full Bath

Half Bath

Kitchen



Bunk House

Bunk stows away when not in use.



Freedom Express has combined our most popular features and floorplans to create these Select value added models. They come complete with private master bedrooms, seamless kitchen counters, entertainment towers and our signature vacuum bonded Azdel sidewall construction.

DECOR

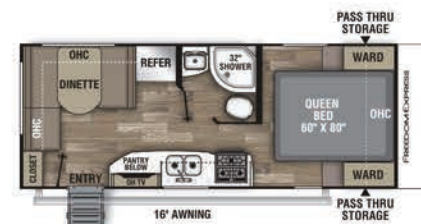
RIVER



SELECT ULTRA LITE MODELS

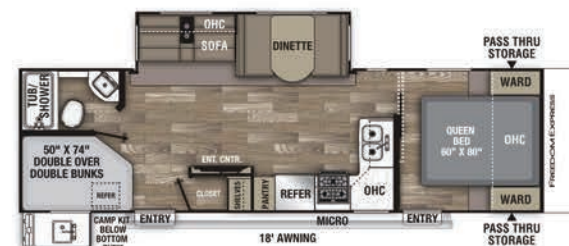


17 BLSE / Exterior Length 20' 3"



20 SE / Exterior Length 24' 6"

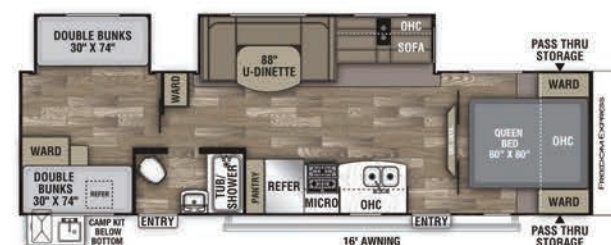
NEW



28.7 SE / Exterior Length 32' 10"



29 SE / Exterior Length 33' 4"



31 SE / Exterior Length 35' 6"

SELECT TOY HAULER	17 BLSE	SELECT ULTRA LITES	20 SE	28.7 SE	29 SE	31 SE
UVW	3,596	UVW	TBD	6,100	5,638	6,766
Hitch Weight	508	Hitch Weight	TBD	720	639	704
Carrying Capacity	2,304	Carrying Capacity	TBD	1,600	1,962	2,734
Ext. Length (Incl. Bumper to Hitch)	20' 3"	Ext. Length (Incl. Bumper to Hitch)	24' 6"	32' 10"	33' 4"	35' 6"
Ext. Height (Incl. A/C)	10' 8"	Ext. Height (Incl. A/C)	TBD	10' 11"	11' 1"	11' 3"
Int. Height (Coach)	81"	Int. Height (Coach)	TBD	81"	81"	81"
Awning Length	12'	Awning Length	16'	18'	16'	16'
Water Capacity (gal.)		Water Capacity (gal.)				
Fresh/Grey/Waste	50/35/35	Fresh/Grey/Waste	50/35/35	50/70/35	50/35/35	50/35/35
Tire Size	ST205/75R14D	Tire Size	ST205/75R14D	ST205/75R14D	ST205/75R14D	ST225/75R15E

Select Edition Package

Alumicage Construction
 Vacuum Bonded Walls with Azdel Composite
 Radial Tires with Silver Steel Wheels
 Spare Tire
 Detachable Power Cord
 Power Awning
 Tinted Safety Glass Windows
 Front Diamond Plate
 E-Z Lube® Axles
 Heated/Enclosed Underbelly
 Full Walk-on Roof
 Tufflex PVC Roofing
 Winterize Ready Kit
 Ducted Furnace and Air Conditioner (N/A 17BL, 20SE)
 TV and Radio Antenna with WiFi and 4G Prep
 Freedom Solar Ready
 Two Exterior Speakers
 Pet Leash and Bottle Opener
 81" Interior Height
 AM/FM/HDMI/USB/Bluetooth Stereo
 Two Interior Speakers
 6 Gal. DSI Gas/Electric Water Heater
 LED Interior Lighting
 Night Shades
 Congoleum Diamond Flooring
 Hidden Hinge Cabinetry
 Dual Basin Undermount Stainless Steel Sink
 Microwave
 Oven with 3-Burner Cooktop (N/A 17BL)
 Double Door Refrigerator
 Utensil Drawer (N/A 17BL)
 60" x 80" Queen Mattress with Cover (17BL – 54" x 80")
 USB Ports
 Bath Skylight
 Friction Hinge Entry Door
 RVIA

Select Edition Options

Interior Choice – River

Leisure Package

32" TV
 Power Tongue Jack
 LED Awning Light

Additional Options

50 AMP Service with Second Air Conditioner Prep
 15K BTU Roof Air Conditioner
 12V 10 Cu. Ft. Refrigerator
 CSA Canadian Compliance - Inc. CSA
 MEP Fee (REPLACES RVIA)

STANDARD FEATURES & OPTIONS

Available on most Freedom Ultra Lites, Liberty and Maple Leaf Editions



Exterior Table • Exterior Griddle • Side Table

Many models are equipped with a Camp Kitchen. The 326 BHDSLE Camp Kitchen has a refrigerator, a sink with hot and cold running water, a TV outlet, plus storage.



Foldable Dinette Table can be used indoors or outdoors and converts to a sleeping area.



Stay connected. Winegard Air 360+ WiFi and 4G Prep is standard on all models.

Thomas Payne theater seating with heat, massage and LED lighting underneath is available on all Liberty/Maple Editions and some Ultra Lites.



Outside Kitchen



Built-in controls

Wired for solar with Jaboni Power Products



PLEASE NOTE
 MAKE SURE STABILIZER JACKS ARE
 DOWN BEFORE OPERATING THE
 SLIDE OUT MECHANISM



Centralized control panel



5-Point stabilizing Power Tongue Jack system, is standard on Liberty and Maple Leaf Editions.



Convenient hidden laundry bag





ULTRA LITE TOWABLES – OUTSTANDING CRAFTSMANSHIP



Coachmen®
Recreational Vehicles

A division of Forest River, Inc.

423 N. Main Street • P.O. Box 30 • Middlebury, IN 46540
(800) 353-7383 • www.coachmenrv.com/freedom-express



www.ForestRiverBuyLocal.com



Learn More
Scan this barcode using
a QR Reader on your
smart phone to learn
more about Forest River.



A Berkshire Hathaway company.

YOUR COACHMEN FREEDOM EXPRESS DEALER

Colton RV & Marine
3122 Niagara Falls Blvd
North Tonawanda, NY 14120
(716) 694-0188
www.ColtonRV.com

Colton RV & Marine
3443 Southwestern Blvd.
Orchard Park, NY 14127
(716) 957-3250
www.Coltonrv.com

COACHMEN INTERACTIVE MOBILE MANUALS

Download your Coachmen mobile app or visit our dynamic online manual to enhance your ownership experience.

These interactive options provide incredible ease and insight into use, maintenance and enjoyment of your Coachmen product. Ranging from "How-To" videos, pictures and illustrations of various components, systems and features to fully searchable content and downloadable PDFs for individual component owner's manuals, answers are always just a click away.



GVWR (Gross Vehicle Weight Rating) – is the maximum permissible weight of the unit when fully loaded. It includes all weights, inclusive of all fluids, occupants, cargo, optional equipment and accessories. For safety and product performance do NOT exceed the GVWR.

GCWR (Gross Combined Weight Rating) – is the maximum permissible loaded weight of your motor home and any towed trailer or towed vehicle. Actual GCWR of this vehicle may be limited by the sum of the GVWR and the installed hitch receiver maximum capacity rating; see hitch rating label for detail.

GAWR (Gross Axle Weight Rating) – is the maximum permissible weight, including cargo, fluids, optional equipment and accessories that can be safely supported by each axle.

UVW (Unloaded Vehicle Weight)* – is the typical weight of the unit as manufactured at the factory. It includes all weight at the unit's axle(s), including full fuel, all fluids and LP Gas. The UVW does not include cargo, fresh potable water, additional optional equipment or dealer installed accessories.

*Estimated Average based on standard build optional equipment.

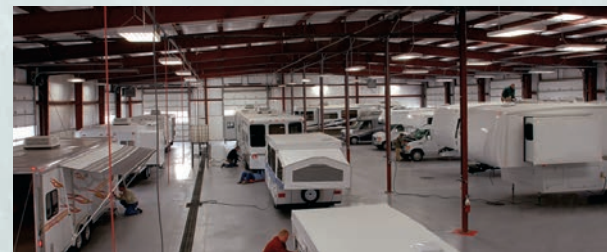
CCC (Cargo Carrying Capacity)** – is the amount of weight available for fresh potable water, cargo, passengers, additional optional equipment and accessories. CCC is equal to GVWR minus UVW. Available CCC should accommodate fresh potable water (8.3 lbs per gallon). Before filling the fresh water tank, empty the black and gray tanks to provide for more cargo capacity.

**Estimated average based on standard build optional equipment.

Each Forest River RV is weighed at the manufacturing facility prior to shipping. A label identifying the unloaded vehicle weight of the actual unit and the cargo carrying capacity is applied to every Forest River RV prior to leaving our facilities. The load capacity of your unit is designated by weight, not by volume, so you cannot necessarily use all available space when loading your unit. Actual towing capacity is dependent upon your particular loading and towing circumstances, which includes the GVWR, GAWR and GCWR as well as adequate trailer brakes. Please refer to the Operator's Manual of your vehicle for further towing information.



All information contained in this brochure is believed to be accurate at the time of publication. However, during the model year, it may be necessary to make revisions and Forest River, Inc. reserves the right to make all such changes without notice, including prices, colors, materials, equipment and specifications as well as the addition of new models and the discontinuance of models shown in this brochure. Therefore, please consult with your Forest River dealer and confirm the existence of any materials, design or specifications that are material to your purchase decision. ©2020 Freedom Express by Coachmen, a Division of Forest River, Inc., a Berkshire Hathaway company. All Rights Reserved. 12/20



PRE-DELIVERY INSPECTION FACILITY

20,000 square feet of quality assurance. The bare essentials for a premium product. This state-of-the-art facility gives immediate daily feedback to production for quality assurance in every unit built.

24/7 EMERGENCY ROADSIDE ASSISTANCE WITH VEHICLE PURCHASE*

TOWING
JUMP-STARTS
TIRE CHANGES
FLUID DELIVERY
LOCKOUT
SERVICE

WINCH-OUT
MOBILE MECHANIC
TECHNICAL
SUPPORT
DEALER LOCATOR
SERVICES



*VALID FOR 1 YEAR FROM DATE OF PURCHASE