

2023
MODEL YEAR

CLASS A GAS
ECLIPSE

**ALL-NEW
MODEL**

HR HOLIDAY RAMBLER
holidayrambler.com

32S | 34J | 35R

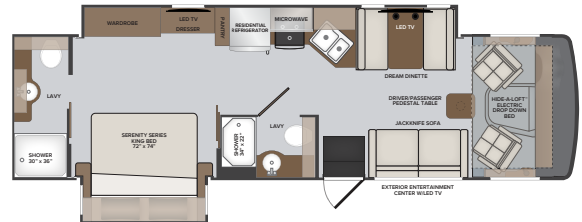


TOP FEATURES

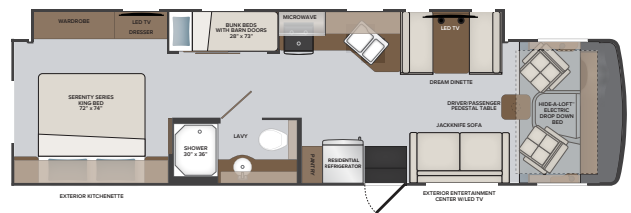
- Ford 7.3L V8. (350HP, 468ft.lb.)
- 22,000 pound chassis.
- One piece fiberglass rear cap.
- Standard full body paint
- Wifi Ranger comes standard boosting any existing Wifi signal.
- 8,000 pound tow hitch.
- MultiPlex house controls that can be controlled by your smart device or the 7" digital display centrally located inside your unit.
- Safe-T-View camera display (optional).
- Standard Hide-A-Loft™ electric drop down bed.
- Standard residential refrigerator. LP refrigerator optional.
- Pre wired for solar panel.
- Tarkett interlocking composite flooring.
- Dash stereo with Apple CarPlay, Android Auto, and 10.1" tilt screen.
- No luan backer on fiberglass sidewall reducing the possibility of delams.
- Full sheet steel lined underbelly on floors and slide outs giving optimal protection against moisture.
- Large one piece panoramic windshield allows you an unobstructed view of the road ahead.

ECLIPSE
Shown in Silverado Graphics

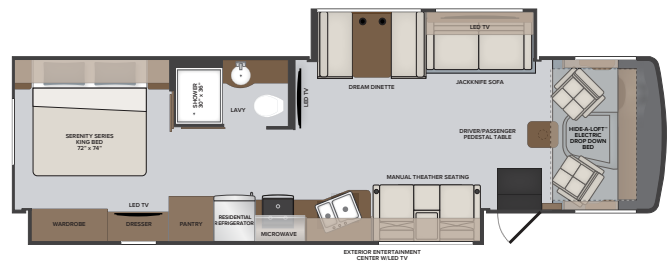
32S



34J



35R



AVAILABLE OPTIONS

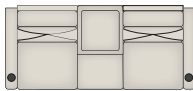
- Steering Stabilizer System
- Roof Vent Rain Covers
- KING® Stationary Satellite Universal System
- Manual Theater Seating (32S & 34J) (Standard 35R)
- Washer & Dryer All In One Combo (35R)
- Dream Dinette w/Table, Single Door Storage
- LP Refrigerator 8 Ft³
- Ford® CSA Package
- Garmin® Collision Mitagation
- Safe-T-View



OPT. 105
DOMETIC 8CF
DOUBLE DOOR
REFRIGERATOR LP



OPT. 126
W/D ALL IN
ONE COMBO



OPT. 194
MANUAL THEATER SEATING

TO LOCATE A DEALER NEAR YOU VISIT OUR WEBSITE AT HOLIDAYRAMBLER.COM

Colton RV & Marine
3122 Niagara Falls Blvd
North Tonawanda, NY 14120
(716) 694-0188
www.ColtonRV.com

Colton RV
3443 Southwestern Blvd.
Orchard Park, NY 14127
(716) 957-3250
www.Coltonrv.com

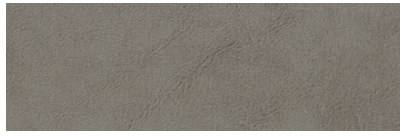
2023
MODEL YEAR

CLASS A GAS
ECLIPSE

HR HOLIDAY RAMBLER
holidayrambler.com

32S | 34J | 35R

BAYVIEW



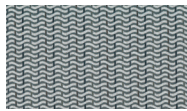
SOFA



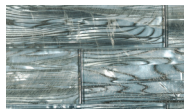
LIVING ACCENT



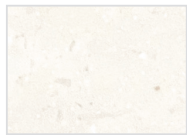
BEDDING



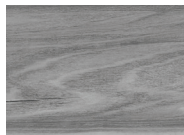
VALANCE



BACKSPASH

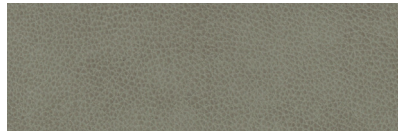


COUNTERTOP



FLOORING

NEWPORT



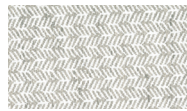
SOFA



LIVING ACCENT



BEDDING



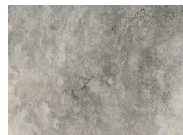
VALANCE



BACKSPASH



COUNTERTOP



FLOORING

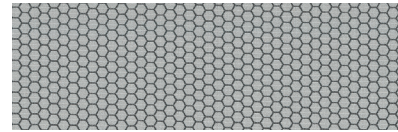
PORTOBELLO



SOFA



LIVING ACCENT



BEDDING



VALANCE



BACKSPASH



COUNTERTOP



FLOORING



BOURBAN



WHISPERING WIND



FOSSIL
(PAINTED CABINERY)



SUMMIT ASH
(PAINTED w/Glazed accents CABINERY)

CHASSIS

MODEL	32S	34J	35R
Wheelbase	208"	228"	228"
Front GAWR (lbs)	8,000	8,000	8,000
Rear GAWR (lbs)	15,000	15,000	15,000
GCWR (lbs)	26,000	26,000	26,000
Hitch Rating Weight (lbs)	8,000	8,000	8,000
Tongue Weight (lbs)	800	800	800
Fuel Capacity (gal)	80	80	80

FORD® CHASSIS



Model: Ford®
Engine: 7.3L Triton V8
Transmission: Ford® 6-Speed, Automatic w/Overdrive
Alternator: 210 Amp
Torque: 468 lb.-ft. @ 3,000 RPM
Horsepower: 350HP @ 3,900 RPM

DIMENSIONS AND CAPACITIES

	32S	34J	35R
Overall Length	33' 6"	36' 0"	36' 0"
Overall Height	12' 4"	12' 4"	12' 4"
Overall Width (Maximum)	100"	100"	100"
Interior Height (Maximum)	82"	82"	82"
Interior Width (Maximum)	96"	96"	96"
Patio Awning Width	14' 0"	22' 0"	18' 0"
Interior Storage (cu. ft.)	97	110	130
Exterior Storage (cu. ft.)	83	82	160
Fresh Water Capacity (gal)	50	50	50
Grey Water Capacity (gal)	74	37	37
Black Water Capacity (gal)	37	37	37

EXTERIORS



PRIDE



SILVERADO



WOODLAND

ECLIPSE