



Keystone RV  
Company

# CARBON

## TOYHAULERS

[WWW.KEYSTONERV.COM/CARBON](http://WWW.KEYSTONERV.COM/CARBON)



THE ESSENTIAL ELEMENT  
TO LIFE & ADVENTURE



**THE ESSENTIAL ELEMENT  
TO LIFE & ADVENTURE**



# CARBON

## TOYHAULERS

[WWW.KEYSTONERV.COM/CARBON](http://WWW.KEYSTONERV.COM/CARBON)

Finally...a Luxury Toy Hauler at an affordable price. Carbon offers a rare combination of luxury and functionality for thousands less than the traditional toy hauler brands. This was achieved by listening to exactly what customers wanted. The results are a product that has eye popping appeal with all the features the avid toy hauler enthusiast desires. In addition to the overall value, Carbon has a wide array of floor plans to accommodate any need. This is why we define Carbon as "the essential element to life and adventure".





## **FIFTH WHEELS**

### ***LIGHTER WEIGHT TOYHAULERS***

Carbons fifth wheel lineup has all of the essential elements for the toyhauler enthusiast, yet they are lighter weight and value priced. Carbon fifth wheels give you all of the bang for less of the buck. Essentials such as 7,000 pound axles, 8' ramp doors, and industry exclusive frame integrated worry-free d-rings are standard in every fifth wheel.

**PAGES 4-7**



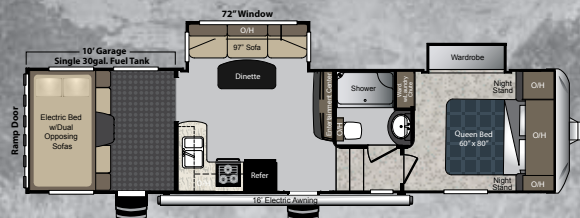
## **TRAVEL TRAILERS**

### ***BIG THINGS IN SMALL PACKAGES***

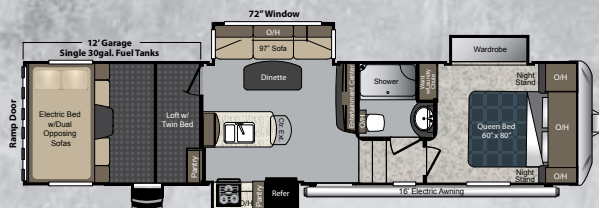
The all new travel trailer line up from Carbon provides every outdoorsman an avenue to their next adventure while incorporating a light weight design and price tag. Carbons two half ton towable configurations offer multiple cargo areas with up to 14' in loading length. Captured in every Carbon floor plan is a luxurious residential appeal.

**PAGES 8-11**

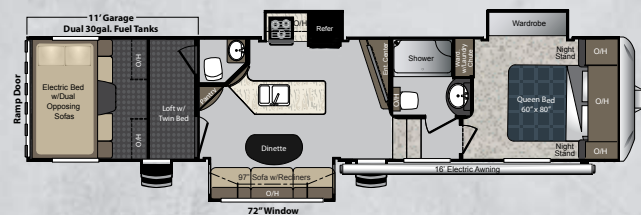



**297** FIFTH WHEEL

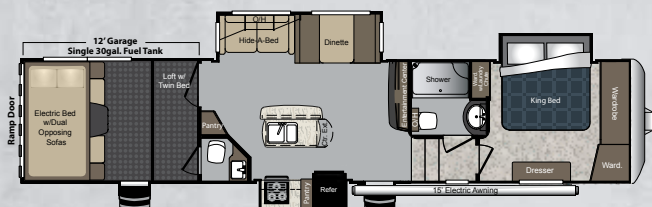
SHIPPING WEIGHT: 11,285 LBS  
HITCH WEIGHT: 2,785 LBS  
LENGTH: 35' 6"


**327** FIFTH WHEEL

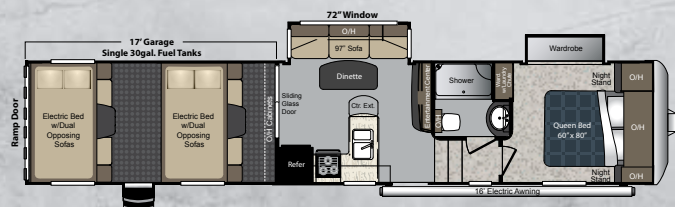
SHIPPING WEIGHT: 12,410 LBS  
HITCH WEIGHT: 2,970 LBS  
LENGTH: 37' 8"


**357** FIFTH WHEEL

SHIPPING WEIGHT: 12,595 LBS  
HITCH WEIGHT: 3,060 LBS  
LENGTH: 38' 11"


**377** FIFTH WHEEL

SHIPPING WEIGHT: 13,770 LBS  
HITCH WEIGHT: 3,410 LBS  
LENGTH: 41'


**387** FIFTH WHEEL

SHIPPING WEIGHT: 12,875 LBS  
HITCH WEIGHT: 3,540 LBS  
LENGTH: 42' 8"

**357 SHOWN IN TWILIGHT DECOR**


**CARBON**  
TOYHAULERS  
[WWW.KEYSTONERV.COM/CARBON](http://WWW.KEYSTONERV.COM/CARBON)





## **FIFTH WHEELS**



**QUEEN SIZE BEDS WITH WARDROBE SLIDES  
FEATURE TREMENDOUS STORAGE AND OPEN SPACE**



**SINGLE PEECE  
LARGE SHOWERS**



**LARGE LED TV'S**

**CARBON FIFTH WHEELS HAVE ALL OF  
THE FEATURES YOU NEED PLUS ARE  
LIGHT WEIGHT AND VALUE PRICED.**

CARBON FIFTH WHEELS



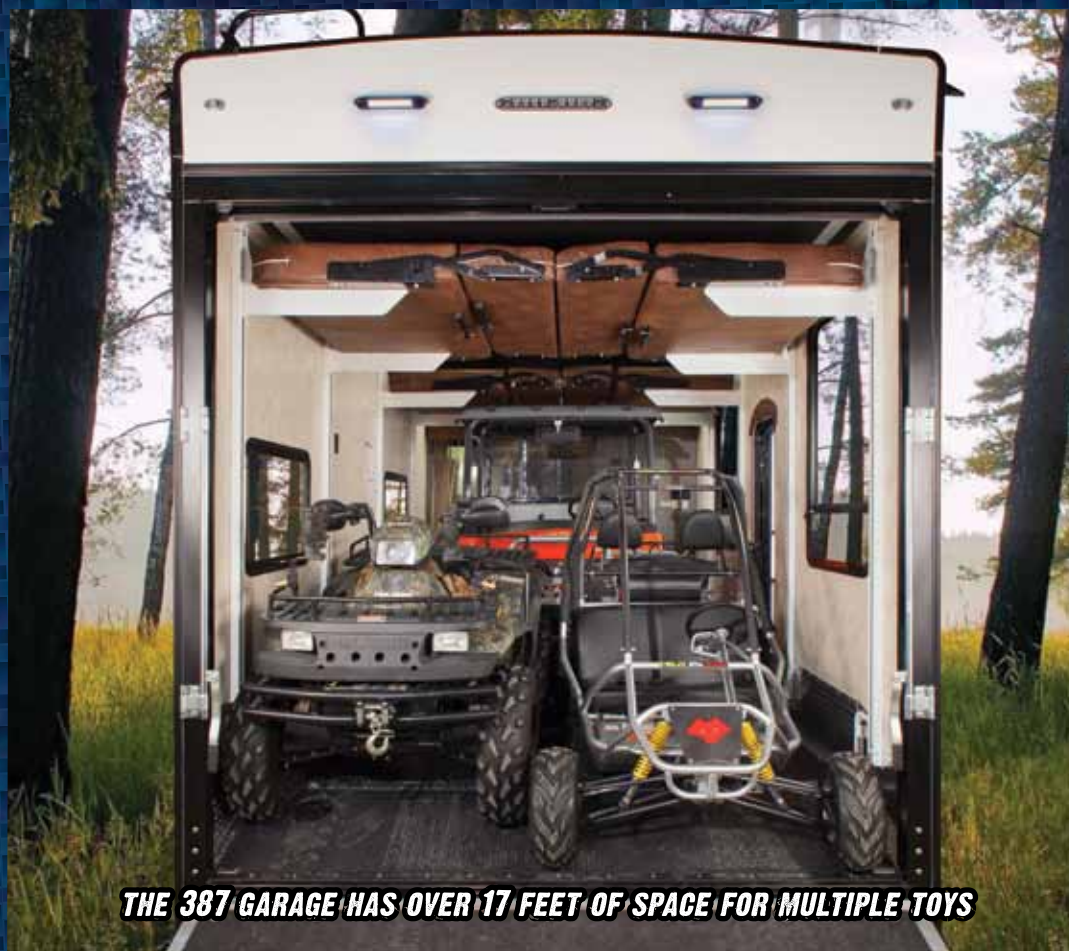
**THE GARAGE EASILY TURNS INTO THE BEST LIVING/SLEEPING AREAS IN THE MARKET**



**DUAL OPPOSING SOFAS WITH DINETTE TABLE**

**ELECTRIC BUNK BEDS IN GARAGE**

**8' RAMP DOOR MAKES IT EASY TO LOAD AND UNLOAD YOUR TOYS**



**THE 387 GARAGE HAS OVER 17 FEET OF SPACE FOR MULTIPLE TOYS**





# CARBON

## STANDARDS & OPTIONS

# FIFTH WHEELS

ALL THE BANG WITHOUT THE BUCK

### INTERIOR

- 8 Cu. Ft. Refrigerator
- 6-Gal. Gas/Electric DSI Water Heater w/ Quick Recovery
- Residential Microwave
- 3 Burner Range w/ 22-inch Oven
- Upgraded Kitchen Faucet with Stainless Steel Sink
- High Rise Faucet
- Solid Surface Counter Tops
- Maple Hardwood Cabinetry w/ 100# Full Extension Ball Bearing Drawer Guides
- Night Shades
- Power Vent In the Master Bathroom
- Porcelain Foot Flush Toilet
- Shower Surround
- Skylight in Shower
- Residential Interior Doors
- Cable / Sat. Prep
- TV Antenna w/ Booster
- Bedroom TV Hook-up

- Control Panel with Fuel Gauge
- Braced and Wired for 2nd Ducted A/C
- Automatic Transfer Switch with Generator Prep
- Battery Quick Disconnect
- 50 Amp Service
- 15,000 BTU Ducted A/C
- Ducted A/C Into Garage
- LED Lighting

### EXTERIOR

- Convenience Center (All System Hook-Ups Located In One Area)
- Outside Shower
- Black Tank Flush
- 30 Gallon Fuel Tank with Fuel Station
- Exterior Cable / Sat Hook-up
- Rear LED Spotlights
- Outdoor LED Activity Light
- One Touch Electric Awning with LED Lighting

- Easy Glide Radius Steps
- Large Tinted Safety Glass Windows w/ 80% Tint
- Huge Pass-Through Storage
- Collapsible Aluminum Roof Ladder
- Rain Gutters with Extended Drip Spouts
- Aluminum "RAM" Air Ventilation System In Garage
- Fiberglass Front Cap with LED Recessed Lighting
- Spare Tire
- 7,000# Ultra Lube Axles
- Premium 8 Lug 16" "E" Rated Radial Tires
- Heated And Enclosed Underbelly
- Double Welded Aluminum Construction
- Upgraded Graphics and Gray Sidewalls/Rear Ramp Door
- Hydraulic Slide Rooms (select models)
- 5" Pre-Engineered Roof Truss Rafters

- One Piece TPO (12 year warranty)
- Fully Walkable Roof
- Electric Front and Rear Jacks
- 12" I-Beams (select models)
- 78" Tall Main Entry Door
- Large Entry Door Grab Handle

### ENTERTAINMENT SYSTEM

- LED HDTV
- Sony® AM/FM/CD/DVD/MP3 Player
- 4 - Interior Speakers
- 2 - Exterior Marine Speakers

### OPTIONS

- Electric Beds with Dual Opposing Sofas
- Pull-Down Screen in Cargo Area
- Cummins/Onan 5,500 Watt Generator

- Frameless Dual Pane Windows
- 131" Sofa In Place of Dinette and Hide-A-Bed Sofa (377 only)
- Zone Controlled 2nd 15,000 BTU Ducted A/C
- Removable Edged Cargo Carpet
- Rear Patio with Awning and Patio Steps
- Front Electric Beds with Dual Opposing Sofas (387)

### SAFETY PACKAGE

- Carbon Monoxide Detector
- Smoke Detector
- LP Gas Detector
- Fire Extinguisher



## SPECIFICATIONS & DECOR OPTIONS

FIFTH WHEELS	297	327	357	377	387
SHIPPING WEIGHT	11285	12410	12595	13770	12875
CARRYING CAPACITY	4115	4090	3905	4230	5125
HITCH WEIGHT	2785	2970	3060	3410	3540
EXTERIOR LENGTH	35' 6"	37' 8"	38' 11"	41'	42' 8"
EXT. HEIGHT - A/C TOP	13' 2"	13' 2"	13' 6"	13' 6"	13' 6"
FRESH WATER (GAL.)	106	106	106	106	106
WASTE WATER (GAL.)	39	69	69	69	39
GRAY WATER (GAL.)	82	76	69	76	78
LPG	60	60	60	60	60
AWNING	18'	15'	15'	15'	20'

\* Weights reflect a fully equipped coach. See disclaimer on back cover.



**TWILIGHT**

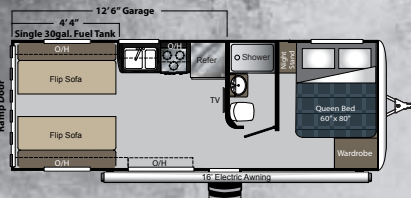


**MERLOT**

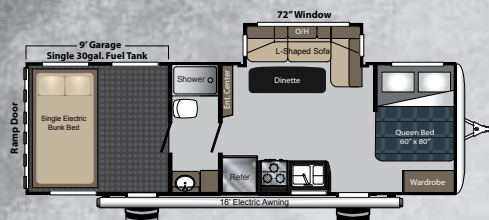


**STONE**

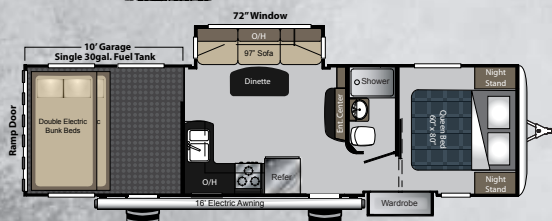


**22 TRAVEL TRAILER**

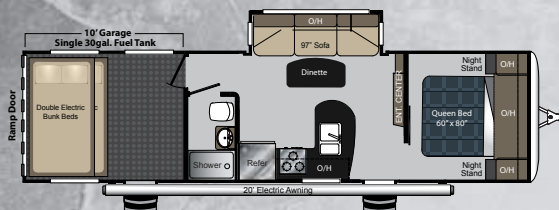
SHIPPING WEIGHT: 5,420 LBS  
HITCH WEIGHT: 660 LBS  
LENGTH: 26' 2"

**27 TRAVEL TRAILER**

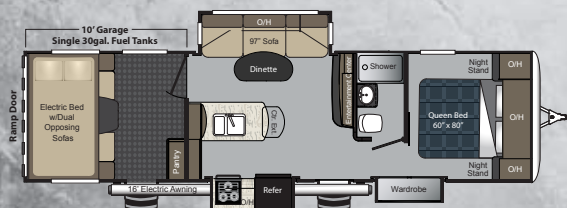
SHIPPING WEIGHT: 6,885 LBS  
HITCH WEIGHT: 830 LBS  
LENGTH: 31'

**31 TRAVEL TRAILER**

SHIPPING WEIGHT: 8,804 LBS  
HITCH WEIGHT: 1,215 LBS  
LENGTH: 35' 6"

**32 TRAVEL TRAILER**

SHIPPING WEIGHT: 8,450  
HITCH WEIGHT: 1,275  
LENGTH: 35' 5"

**33 TRAVEL TRAILER**

SHIPPING WEIGHT: 8,940 LBS  
HITCH WEIGHT: 1,285 LBS  
LENGTH: 35' 5"

**33 SHOWN IN TWILIGHT DECOR**





## TRAVEL TRAILERS



33 BEDROOM SHOWN IN TWILIGHT DECOR

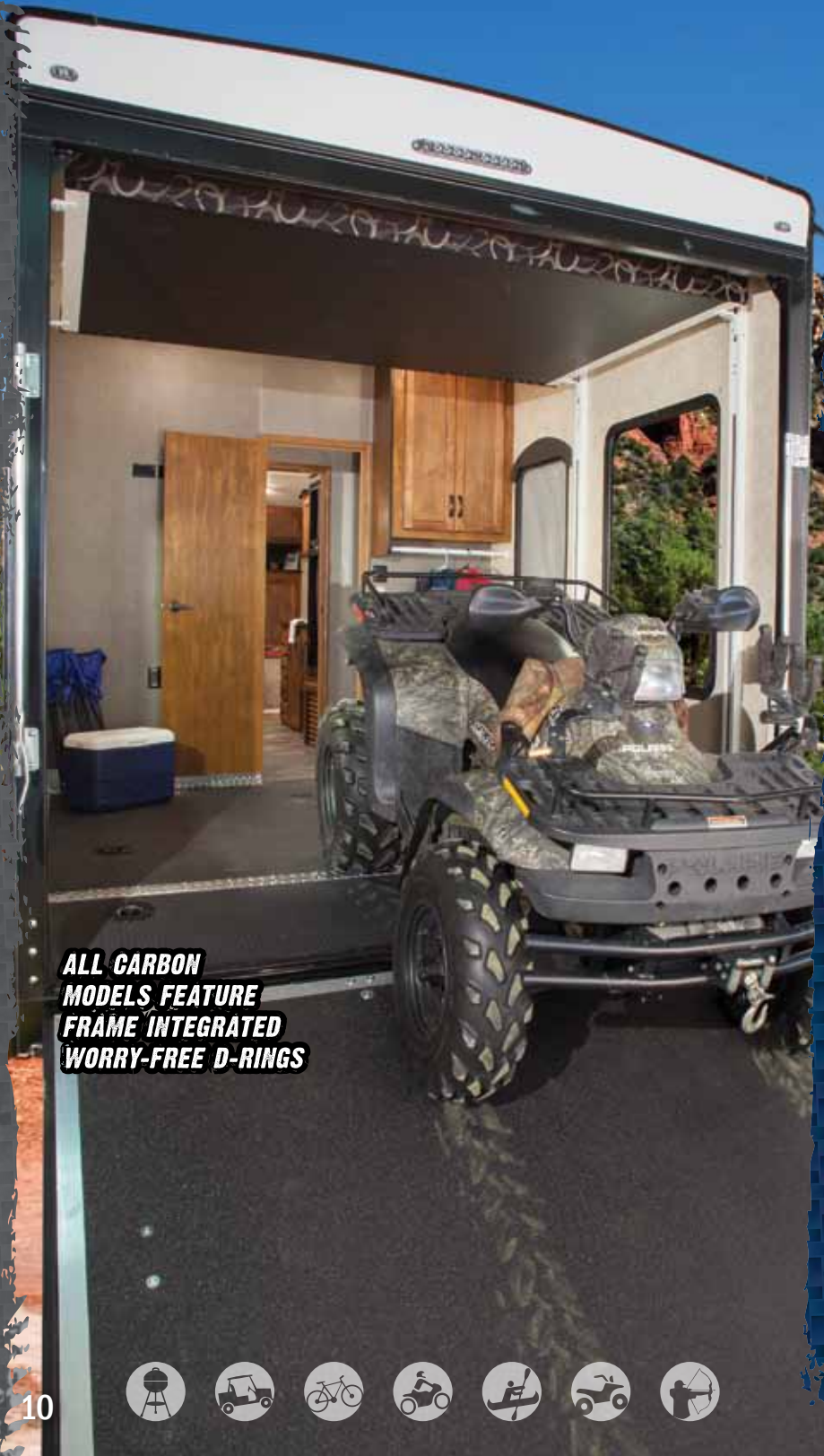


33 KITCHEN

RESIDENTIAL WOOD WORK AND  
THE BEST APPLIANCES IN THE  
INDUSTRY HIGHLIGHT OUR KITCHEN

**CARBON**  
TOYHAULERS  
[WWW.KEYSTONERV.COM/CARBON](http://WWW.KEYSTONERV.COM/CARBON)





**ALL CARBON  
MODELS FEATURE  
FRAME INTEGRATED  
WORRY-FREE D-RINGS**



**22 LIVING AREA SHOWN IN ECLIPSE DECOR**



**DUAL OPPOSING SOFAS IN CARBON 22 GARAGE AREA**





# CARBON

## STANDARDS & OPTIONS

# TRAVEL TRAILERS

### INTERIOR

- 6 Cu. Ft. Refrigerator (31 has 8 Cu. Ft.)
- 6-Gal. Gas/Electric DSI Water Heater w/ Quick Recovery
- Residential Microwave
- 3 Burner Range w/ 22-inch Oven (select models)
- Large Kitchen Sink
- High Rise Faucet
- Laminate Counter Tops
- Maple Hardwood Cabinetry
- 100# Full Extension Ball Bearing Drawer Guides
- Night Shades
- Power Vent In the Master Bathroom
- Porcelain Foot Flush Toilet
- Shower Surround
- Skylight in Shower
- Cable / Sat. Prep
- TV Antenna w/ Booster

- Bedroom TV Hook-up
- Control Panel with Fuel Gauge
- Automatic Transfer Switch with Generator Prep
- Battery Quick Disconnect
- 30 Amp Service
- 15,000 BTU Air Conditioner (Select Models)
- Ducted A/C Into Garage

### EXTERIOR

- Outside Shower
- Black Tank Flush
- 30 Gallon Fuel Tank with Fuel Station
- Exterior Cable / Sat Hook-up
- Outdoor Activity Light
- One Touch Electric Awning with LED Lighting
- Easy Glide Radius Steps
- Large Tinted Safety Glass Windows with 80% Tint

- Rain Gutters with Extended Drip Spouts
- Aluminum "RAM" Air Ventilation System In Garage
- Spare Tire
- 16" "E" Rated Radials (select models)
- Heated and Enclosed Underbelly
- Double Welded Aluminum Construction
- Hydraulic Slide Rooms (select models)
- One Piece TPO Roof (12 year warranty)
- Upgraded Graphics and Gray Sidewalls/Rear Ramp Door

### ENTERTAINMENT SYSTEM

- 40" LED HDTV (select models)
- AM/FM/CD/DVD/MP3 Player

- 4 - Interior Speakers
- 2 - Exterior Marine Speakers

### OPTIONS

- Electric Beds with Dual Opposing Sofas (27, 31, 32, 33)
- Single Electric Bed Lift (27, 31, 32, 33)
- Rear Screen Enclosure
- Removable, Edged Cargo Carpet (22, 31, 32, 33)
- Onan 4,000 Watt Generator
- Frameless Dual Pane Windows
- Euro Style Chair (22)
- Generator Storage Rack (22)

### SAFETY PACKAGE

- Carbon Monoxide Detector
- Smoke Detector
- LP Gas Detector
- Fire Extinguisher



## SPECIFICATIONS & DECOR OPTIONS

FIFTH WHEELS	22	27	31	32	33
SHIPPING WEIGHT	5420	6885	8804	8450	8940
CARRYING CAPACITY	5395	3900	4410	4550	4015
HITCH WEIGHT	660	830	1215	1275	1285
EXTERIOR LENGTH	26' 2"	31'	35' 6"	35' 5"	35' 5"
EXT. HEIGHT - A/C TOP	12' 3"	12' 3"	12' 3"	12' 3"	12' 3"
FRESH WATER (GAL.)	60	60	106	106	106
WASTE WATER (GAL.)	30	30	30	30	30
GRAY WATER (GAL.)	30	39	60	39	60
LPG	40	40	40	40	40
AWNING	16'	18'	16'	20'	16'



**TWILIGHT**



**MERLOT**



**STONE**

\* Weights reflect a fully equipped coach. See disclaimer on back cover.





**THE ESSENTIAL ELEMENT  
TO LIFE & ADVENTURE**

# CARBON

## TOYHAULERS

**[WWW.KEYSTONERV.COM/CARBON](http://WWW.KEYSTONERV.COM/CARBON)**



**Keystone RV  
Company**

**[WWW.KEYSTONERV.COM](http://WWW.KEYSTONERV.COM) | 574-535-2100**



DISCLAIMER: Product information is as accurate as possible as of the date of publication of this brochure. All features, floor plans, and specifications in this brochure are subject to change without notice. Please also consult Keystone's web site at [www.keystonerv.com](http://www.keystonerv.com) for more current product information and specifications. Tow Vehicle Disclaimer. CAUTION: Owners of Keystone recreational vehicles are solely responsible for the selection and proper use of tow vehicles. All customers should consult with a motor vehicle manufacturer or their dealer concerning the purchase and use of suitable tow vehicles for Keystone products. Keystone disclaims any liability or damages suffered as a result of the selection, operation, use or misuse of a tow vehicle. KEYSTONE'S LIMITED WARRANTY DOES NOT COVER DAMAGE TO THE RECREATIONAL VEHICLE OR THE TOW VEHICLE AS A RESULT OF THE SELECTION, OPERATION, USE OR MISUSE OF THE TOW VEHICLE.

**YOUR LOCAL CARBON DEALER:**

Colton RV & Marine  
3122 Niagara Falls Blvd  
North Tonawanda, NY 14120  
(716) 694-0188  
[www.ColtonRV.com](http://www.ColtonRV.com)

Colton RV & Marine  
3443 Southwestern Blvd.  
Orchard Park, NY 14127  
(716) 957-3250  
[www.Coltonrv.com](http://www.Coltonrv.com)

**NOVEMBER 2014**