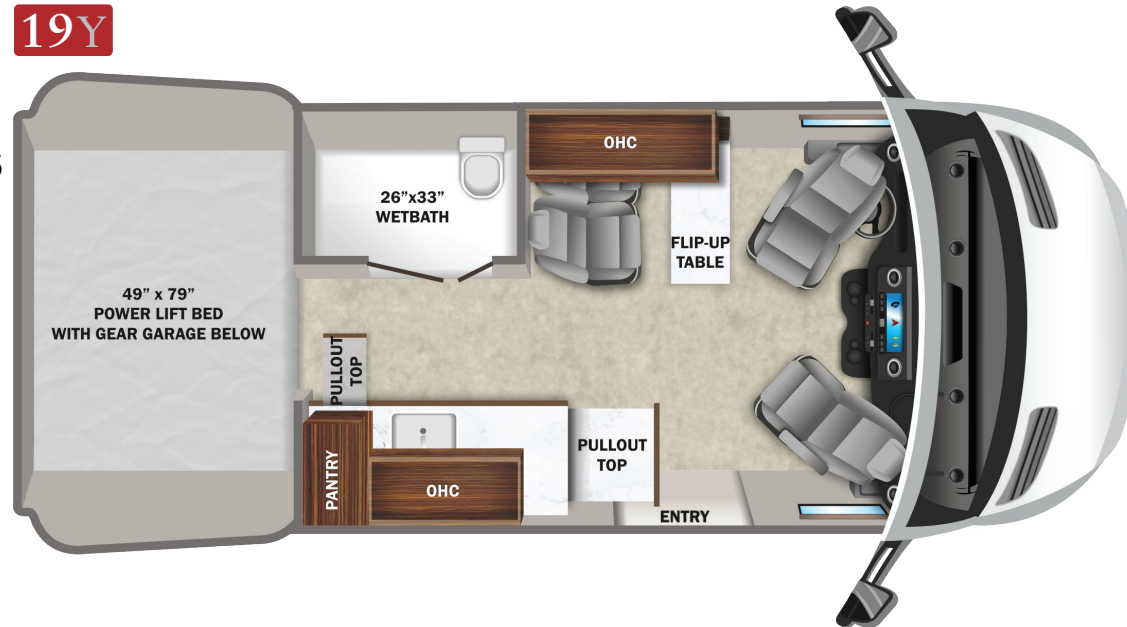


19Y

Colton RV
489 Bushkill Plaza LN #9665
Wind Gap, PA 18091
(610) 863-5239
www.ColtonRV.com



EXTERIOR SELECTIONS



Silver Van



Sandstone Van



Blue-Grey Van



Aztec Partial Paint (Silver Van Only)



Forest Glade Partial Paint (Sandstone Van Only)



Mystic Tide Partial Paint (Blue-Grey Van Only)

CUSTOMER VALUE PACKAGE

E-Z DRIVE™: Koni® shocks, heavy-duty rear stabilizer bar
 Carefree® armless patio awning with LED light strip and wind sensor
 Double roof rack and moveable roof ladder
 Front and rear wind deflectors with front LED light bar
 Timberline hydronic heating system with LED touchscreen control
 13,500 BTU 48V Coleman®-Mach® 10 air conditioner
 Black aluminum wheels with BFGoodrich® All-Terrain T/A® KO2® tires

STANDARD EXTERIOR EQUIPMENT

Mercedes-Benz® Sprinter 2500 4x4 van with 144 in. wheelbase
 GVWR - 9,050 lb.
 GCWR - 13,930 lb.
 3.0L V6 engine with 188HP and 325 ft.-lb. torque
 7-speed automatic transmission
 220 amp alternator
 Daytime running headlamps
 Power folding/heated side-view mirrors
 5,000 lb. rear hitch receiver with 7 pin connector
 12V chassis battery
 24.5 gal. fuel tank (diesel)
 5.8 gal DEF Tank
 48V - 210 amp hour smart lithium battery providing 10KW hours of power
 3,500W inverter
 2nd alternator (48V) dedicated to lithium battery
 30 amp electrical service with detachable power cord
 200W of roof-mounted solar panels
 Slow charge solar panel for chassis battery
 Utility center with water controls and outside hose
 City water connection
 Winterization drain system
 12V demand water pump
 Water filtration system
 House battery disconnect switch
 Aqua View® SHOWERMISER™ water management system

Heated grey tank (12V pad) with skid plate
 Interior-mounted fresh water tank
 LED-lit running boards for cab and entry doors
 110V exterior outlet
 Portable solar plug
 LED-lit holding tank valves
 Side screen door with magnetic and zipper close offs
 Rear screen door with roll-up and black out capabilities
 Fold-down exterior table
 On-board air compressor with front and rear chucks
 Remote keyless entry

STANDARD INTERIOR EQUIPMENT

10.25 in. MBUX infotainment center with GPS
 Power windows and door locks
 A/C and adaptive cruise control
 Active brake assist
 Heated power swivel driver/passenger seats
 Smartphone tray with wireless charging
 Rain-sensing wiper system
 Lane keeping assist
 Blind spot assist
 Traffic sign assist
 Leather-wrapped tilt steering wheel with integrated controls
 Cab area privacy shade
 Custom-molded, vinyl-wrapped ABS interior wall panels
 Soft-touch vinyl ceiling
 High-intensity LED ceiling lights
 Tecnoform® European-style, cabinetry
 Tecnoform® pull-out kitchen countertop extension
 Pantry with Tecnoform® pull-out extension
 Durable rubber flooring
 Firefly Multiplex system
 (2) sliding vented windows
 Rear dual-pane acrylic window with cassette shades
 Removable privacy shade for sliding door window
 MaxxAir Deluxe roof vent
 (2) additional cab bucket seats with slide and recline features
 BOSS® dual-zone radio with Bluetooth®
 Collapsible dinette table

3 cu.ft. DC refrigerator
 Portable induction cooktop
 Stainless steel sink
 110V/USB outlets throughout
 Drop-down overhead bed with 750 lb. capacity
 Fiberglass side pods create larger sleeping surface
 Rear garage under bed with L-track mounts for securing cargo
 (2) recessed under-bed storage bags
 RAM® Tough-Track™ mounts throughout
 All-in-one wet bath with shower and cassette toilet
 Removable bamboo shelves in wet bath
 Powered roof vent in bathroom
 Retractable clothes line in shower
 Seatbelts in all seating locations
 Driver and passenger airbags
 Smoke alarm
 Carbon monoxide detector
 Fire extinguisher

WARRANTY



At Entegra Coach, we build our RVs to handle every adventure, then back them with an outstanding warranty. Our 2-year limited warranty has you covered for 2 camping seasons. That's 730 days. For a copy of our 2-year limited warranty with complete terms and conditions, please contact your local Entegra Coach dealer.

Floorplan	GVWR (lbs.)	GCWR (lbs.)	Wheel Base	Overall Length	Exterior Height w/ A/C & Satellite	Exterior Width	Interior Height	Fresh Water Capacity (gal.)	Grey Waste Water Capacity (gal.)	Black Waste Water Capacity (gal.)
19Y	9,050	13,930	144"	19' 7"	10' 1"	85"	73"	22	20	4.75

It is important for your safety and enjoyment that you are aware of the weights and tow ratings of the RV you select. Consult a competent advisor for questions or advice. Whether you are new to RVing or a veteran, get a feel for the performance of your RV before heading out on the roadways. When you tow a vehicle with your RV, you must drive differently than when you drive a single vehicle. Practice hooking up, driving, backing up and braking in a safe environment or seek out professional instruction. Jayco affixes a weight label to each RV which lists weight information for that vehicle. Refer to that label to verify the vehicle will meet your requirements. Gross Vehicle Weight Rating (GVWR): The maximum permissible weight of the motorhome, including the Unloaded Vehicle Weight (UVW) plus passengers, personal items, all cargo, fluids, options and dealer-installed accessories. The GVWR is equal to or greater than the sum of the UVW and the Cargo Carrying Capacity. Gross Combined Weight Rating (GCWR): The maximum allowable combined weight of the motorhome used as a tow vehicle and the attached towed vehicle.