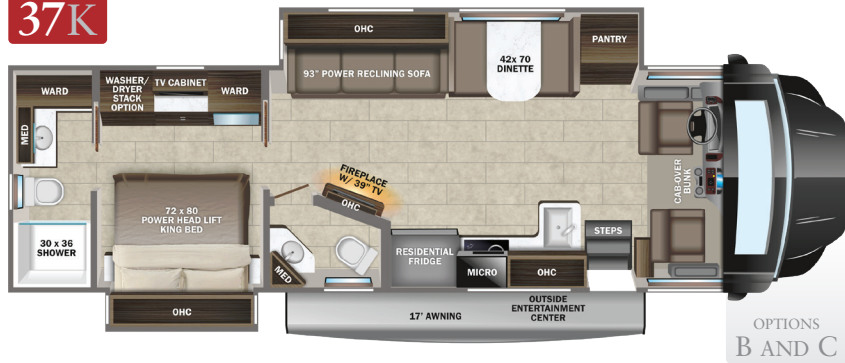
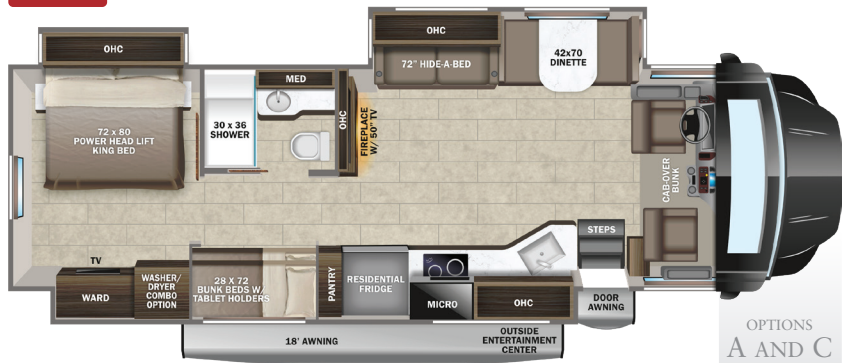


37K



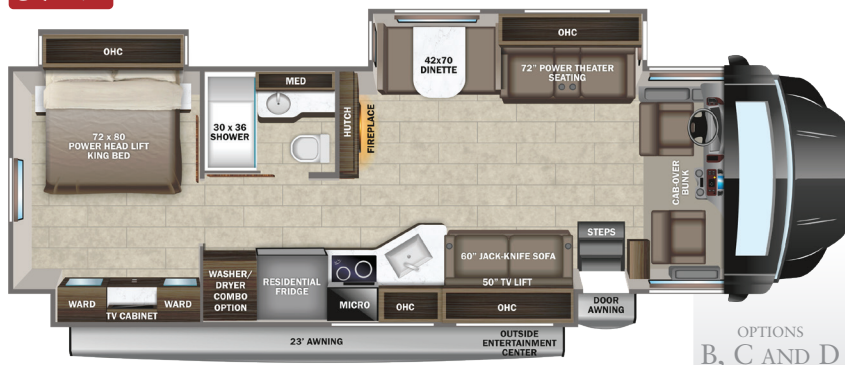
OPTIONS
B AND C

37L



OPTIONS
A AND C

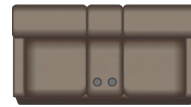
37M



OPTIONS
B, C AND D

OPTIONS

A



Theater Sofa Option

B



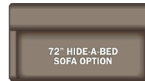
Freestanding
Dinette Option

C



12 cu. ft.
Fridge Option

D



Hide-a-Bed
Sofa Option

EXTERIOR SELECTIONS



Cobblestone Full-Body Paint



Moonlight Full-Body Paint



Oceanside Full-Body Paint



Sienna Full-Body Paint

Colton RV
489 Bushkill Plaza LN #9665
Wind Gap, PA 18091
(610) 863-5239
www.ColtonRV.com

INTERIOR DÉCOR

Carbon



Fossil



CUSTOMER VALUE PACKAGE

E-Z DRIVE™ PREMIER: Computer-balanced driveshaft, rear air suspension, heavy-duty rear stabilizer bar, full air brakes, SACHS shocks
 One-piece, seamless fiberglass front and rear caps
 Automotive-bonded panoramic window in front cap with power shade
 Dual-pane, tinted safety-glass windows
 2) 15,000 BTU A/C units with heat pump on main A/C
 Electric patio awning with LED lights
 2,000W pure sine wave inverter
 Power cord reel with 50 amp service
 Sony® infotainment center with Apple CarPlay® and Android Auto™
 Backup and side-view cameras
 Residential refrigerator
 Residential-size convection microwave

STANDARD EXTERIOR EQUIPMENT

Freightliner® S2RV chassis
 GVWR - 31,000 lb.
 GCWR - 43,000 lb.
 Cummins® ISB 6.7L 360 HP diesel engine with 800 ft.-lb. torque
 Allison® 3000 MH automatic transmission
 185 amp alternator
 G-rated highway tires - 275/80R22.5
 Engine exhaust brake
 12,000 lb. hitch with 1,200 lb. tongue capacity and 7-pin plug
 Dual 12V chassis batteries
 100 gal. fuel tank
 10 gal. DEF tank
 Onan® 8,000W Quiet Diesel generator and auto-gen start
 Transfer switch with reverse polarity protection
 (4) 6V AGM (220Ah) house batteries on slideout tray
 190W solar panel with dual controller
 30,000 BTU auto-ignition furnace
 Electric fireplace
 24.5 gal. propane tank (83 lb.)
 LP quick-connect hookup
 Thetford® Sani-Con Turbo macerator system
 Exterior utility center
 Winterization drain system
 Black tank flush
 Outside shower
 12V demand water pump
 Water filtration system

TuffShell™ vacuum-bond laminated roof, floor and sidewalls
 Bead-foam insulation (R-24 max roof, R-9 max floor, R-8 max walls)
 One-piece, seamless, crowned fiberglass roof
 Premium Sikkens full-body paint
 Automatic hydraulic leveling jacks
 Alcoa® aluminum rims
 Exterior entertainment center with outside speakers and LED HD Smart TV mounted on swivel bracket
 Winegard® In-motion satellite dish
 Deluxe heated, remote-controlled, side-view mirrors
 Entrance door with industry's largest travel-view window
 Electric-powered entrance steps
 Slideout awning(s)
 Carpeted, full pass-through storage compartments with lockable slam latch doors
 Roof ladder
 Smoke alarm
 Carbon monoxide detector

STANDARD INTERIOR EQUIPMENT

6-way power driver and passenger seats
 Power windows and door locks
 A/C and cruise control
 Tilt steering wheel
 Auxiliary start switch
 Privacy curtains for cab area
 Custom-molded ABS surround in cab-over area
 Overhead bunk with 750 lb. capacity
 Firefly Multiplex system
 High-intensity recessed LED ceiling lights
 84 in. interior ceiling height with padded vinyl ceiling
 Raised-panel hardwood cabinetry throughout
 Deluxe hidden cabinet hinges
 Ball-bearing drawer guides
 Day/night roller shades in living area
 Vinyl plank flooring
 Entegra-exclusive, easy-operation legless dinette table
 LED HD Smart TV in living area
 Cable TV hookup with RG-6 coax and video selector switch
 Winegard 2.0 Wi-Fi/4G antenna
 Wood-framed kitchen window with spice cabinets
 2-burner induction cooktop
 LED-lit, solid-surface kitchen countertops with recessed stainless steel sink and sink covers
 Shower with decorative surround, glass door, skylight and light
 Porcelain toilet with foot flush

Recessed stainless-steel bathroom sink
 Powered roof vent in bathroom with wall switch
 Walk-around, king-size bed with power head lift, bedspread and nightstands
 USB port and wireless charging in nightstands
 Under-bed storage (select models)
 LED HD Smart TV in bedroom
 Large wardrobes
 Bunks with industry-exclusive 300 lb. capacity each (37L)
 Wall-mounted tablet holder in each bunk (37L)
 2-point lap safety belts in all designated seating locations
 Third brake light

OPTIONS

Power theater seating (N/A 37K, STD on 37M)
 Hide-a-bed sofa (37M)
 Freestanding table with 4 chairs (N/A 37L)
 12 cu. ft. gas/electric, 4-door refrigerator
 Combination washer/dryer (N/A 37K)
 Stackable washer/dryer (37K)
 Winegard® TRAV'LER® satellite dish - DIRECTV®
 Canadian Shaw® TRAV'LER® satellite dish
 Slide-out tray with 12V refrigerator cooler in basement

WARRANTY



NO ONE OFFERS A BETTER WARRANTY

At Entegra Coach, we build our RVs to handle every adventure, then back them with our industry-leading 2+3 limited warranty. Our 2-year limited warranty has you covered for 2 camping seasons. That's 730 days. In addition, our 3-year structural limited warranty has you covered for 3 camping seasons or 1,095 days. You won't find a better limited warranty in the business, because the only strings we attach are those that deliver the ultimate in reliability. For a copy of our 2-year limited + 3-year structural limited warranty with complete terms and conditions, please contact your local Entegra Coach dealer.

It is important for your safety and enjoyment that you are aware of the weights and tow ratings of the RV you select. Consult a competent advisor for questions or advice. Whether you are new to RVing or a veteran, get a feel for the performance of your RV before heading out on the roadways. When you tow a vehicle with your RV, you must drive differently than when you drive a single vehicle. Practice hooking up, driving, backing up and braking in a safe environment or seek out professional instruction. Jayco affixes a weight label to each RV which lists weight information for that vehicle. Refer to that label to verify the vehicle will meet your requirements. Gross Vehicle Weight Rating (GVWR): The maximum permissible weight of the motorhome, including the Unloaded Vehicle Weight (UVW) plus passengers, personal items, all cargo, fluids, options and dealer-installed accessories. The GVWR is equal to or greater than the sum of the UVW and the Cargo Carrying Capacity. Gross Combined Weight Rating (GCWR): The maximum allowable combined weight of the motorhome used as a tow vehicle and the attached towed vehicle.

Floorplan	GVWR (lbs.)	GCWR (lbs.)	Wheel Base	Overall Length	Exterior Height w/ A/C & Satellite	Exterior Width	Interior Height	Fresh Water Capacity (gal.)	Grey Waste Water Capacity (gal.)	Black Waste Water Capacity (gal.)
37K	31,000	43,000	279	39' 4"	13' 4"	101	84	72	51/40	40/23
37L	31,000	43,000	279	39' 4"	13' 4"	101	84	72	50/31	50
37M	31,000	43,000	279	39' 4"	13' 4"	101	84	72	40/40	33/23