

CORNERSTONE | ANTHEM | ASPIRE | REATTA XL | REATTA



ENTEGRACOACH®

2020

LUXURY
DIESEL

Colton RV & Marine
3122 Niagara Falls Blvd
North Tonawanda, NY
14120 (716) 694-0188
www.ColtonRV.com

Colton RV & Marine 3443
Southwestern Blvd.
Orchard Park, NY 14127
(716) 957-3250
www.Coltonrv.com



2020 ENTEGRA COACH LUXURY DIESEL



ENTEGR A

COACH®

#WEAREENTEGR A



CORNERSTONE PG 3-6

ANTHEM PG 7-10

ASPIRE PG 11-14

REATA XL PG 15-18

REATA PG 19-22

THE QUIETEST RIDING, BEST HANDLING COACH ON THE MARKET TODAY. PERIOD.

HERE'S WHY:

1. SPARTAN® CHASSIS

Every Spartan® chassis comes with a best-in-class 3-year/50,000-mile transferable warranty, with no deductibles. Spartan® chassis also boasts an industry first limited lifetime warranty on the frame as well as a Cummins® 5-year/100,000-mile engine warranty and an Allison® 5-year/200,000-mile transmission warranty.

Included in the limited warranty is roadside assistance provided by Coach-Net, which offers service/towing through 40,000 service and repair facilities in the U.S. and Canada.

2. EXCLUSIVE X-BRIDGE™ FRAME

Our exclusive X-Bridge frame adds even more floor strength and structural rigidity, eliminating chassis flex and twisting; with it, the suspension—not the chassis—absorbs road shock and vibration.

3. FIVE-INCH-THICK FLOORS (CORNERSTONE, ANTHEM & ASPIRE ONLY)

The industry's thickest floor starts with a ¾-inch 7-ply plywood for dramatic reductions in energy transmission, noise and vibration. Cabinets are screwed directly to the wood and tile is laid precisely around them; other manufacturers place cabinets on top of the tile, causing squeaks or cracking.

4. RESIDENTIAL-STYLE WALLS AND ROOF (CORNERSTONE, ANTHEM & ASPIRE ONLY)

Our roof combines crowned aluminum truss rafters on 16" centers with Flexfoil®, fiberglass insulation and ¾" plywood decking. Our walls, along with our front and rear caps, feature tucked-and-glued batting insulation—the same kind of fiberglass insulation found in sound-absorbing theater rooms.



5. MONOTUBE GAS PRESSURE SHOCKS

Designed specifically for luxury motorcoaches by Bilstein®, these shocks have 228% more surface area than twin-tube shocks for greater sensitivity and control. They virtually eliminate excessive sway and self-adjust.

6. MICHELIN® MOTORHOME TIRES

One of the most trusted names in the business, Michelin's motorhome tires are designed for unparalleled fuel efficiency, high mileage and precise load control.

7. IFS (INDEPENDENT FRONT SUSPENSION)

Offers better ride and handling characteristics due to the ability of each wheel to address the road undisturbed by the activities of the other wheel.

CORNERSTONE



Shown: Tuscan Glazed Cherry with Oxford Décor

STANDARDS & OPTIONS

CHASSIS

Spartan® K3 raised rail chassis
Cummins® 15 liter X15 turbocharged 605HP engine
1,950-lb. ft. torque at 1,150 RPM
Allison® 4,000 MH 6-speed transmission
Equalizer hydraulic automatic coach leveling system
Valid air leveling system with auxiliary air compressor
Collision avoidance system with collision warning
and adaptive cruise control
Electronic stability control
Remote air connection
210-amp alternator
Bilstein® shocks - 60mm front & 46mm rear/tag
All-wheel ABS disc brakes
Chassis batteries (2) 12 volt
15-gal. DEF tank (dual fill)
1,500 watt engine block heater
Three-stage engine brake
Reyco® Granning® IFS 20,000-lb. front axle and air suspension
150-gal. fuel tank (dual fill)
20,000-lb. hitch with 7/4-pin plug
Side-mounted radiator
Dana® rear axle 20,000-lb., tag axle 14,000-lb.
4.30 rear axle ratio
Reyco Granning passive steer tag axle
Tag axle air dump
Michelin 365/ 70R 22.5" tires (front) and 315/80R 22.5" tires (rear)
Tire pressure monitor system
Spartan® Safehaul tow vehicle air brake system
Automatic traction control
55-degree turning radius

CONSTRUCTION

2-1/2" exterior wall with welded tubular aluminum construction and high-gloss, gel-coat fiberglass
2" x 4" floor truss construction
3/4" 7-ply plywood main floor decking
X-Bridge™ frames welded into chassis frame
Steel-reinforced front cap and windshield frame
Insulation with reflective Flexfoil floor (R-33), roof (R-24), sidewalls (R-16), front and rear caps (R-22)
One-piece fiberglass roof with 3/8" plywood decking and 4" arched aluminum roof truss
Flush-mounted electric-powered slideout rooms with both VegaTouch™ and separate rocker switch controls
Heated basement storage area
Aluma-Tru™ Superstructure construction on 12"-16" centers

HEAT, A/C, WATER, AND POWER

15,000-BTU low profile A/Cs (3) with heat pumps and condensation drain system
L16 AGM batteries (4), (6V/390 amp hrs. ea.)

Black holding tank sprayer
Sani-Con® Macerator holding tank dump system with electric gate valves and manual back-up system
50-amp power cord with electric reel
Onan® 12,500-watt generator with auto gen start on powered slide-out tray
Aqua-Hot 450 diesel hydronic water and heating system with in-floor heat throughout and engine preheat
3,000 watt pure sine wave inverters (2)
Premium surge protector with smart transfer switch
Water hose with electric powered reel
City and tank water filtration system
Trutank™ ultrasonic tank monitoring system displayed on VegaTouch screen
Winterizing drain system

EXTERIOR

Sikkens custom full body paint
Power slide-out cargo trays
2.8 cu. ft. exterior Dometic refrigerator/ freezer on slide-out tray
LED lit chrome clearance accent light
Power engine door with manual override
Diamond Shield™ front protective film mask
Samsung® 40" 4K UHD Slim, Smart TV and Bose® Solo 5 sound bar on TV bracket with extend, tilt & swivel arm
LED high and low beam headlights
Lighted grab handle with keypad system
LED fog lights, LED marker lights, turn lights, accent lights & license plate light, LED docking lights
Chrome, heated, remote control, Ramco side-view mirrors with blind-spot indicators
Roof mounted Girard® Vision dual pitched patio awnings with LED lights
Full-width rear mudflap, with chrome "Cornerstone" nameplate
Winegard® Trav'ler® satellite dish DIRECTV® - standard with USA option
Winegard® Trav'ler® satellite dish Shaw TV - standard with CSA option
Executive Bus Armor 10" stainless steel trim
Exterior heated utility center with 5" Firefly® system monitor panel
Winegard® Rayzar automatic powered TV antenna
Frameless, tinted, dual-pane, safety-glass windows
Girard® Ultra window shade awnings and slide-out awnings

COCKPIT

E-Z Steer™ electric, adjustable power steering assist
Two dual USB ports and 12V socket for charging
Xite™ 360° camera system that displays on digital dash screen
Valid 15" digital dash with selector knob and three selection main screens

Villa® 6-way power, lumbar, air cooled, heated, leather driver and passenger seats with integrated seatbelt
Glass panel, dual 9" touchscreen in-dash infotainment center with Rand McNally™ RV navigation, Bluetooth, SiriusXM™, AM/FM tuner, integrated camera control, house mode whole coach audio distribution, and integrated VegaTouch coach control
Blind spot monitoring system displayed on digital dash screen
Power adjustable brake and accelerator pedals
Push button start system
VIP wood-grain, leather-wrapped, power tilt and telescoping steering wheel with integrated power controls for cruise and wipers
JBL® premium audio 11-speaker sound system with amplifier, speakers and DVC sub-woofer
Powered front sun visors and privacy shade

INTERIOR

Central vacuum system
Samsung® HD Blu-ray player
LED lit fireplace with 1500W heating element (45B, 45X, and 45Y)
Hand laid 16" x 32" porcelain tile floor
Villa Italian leather furniture throughout
Aire-Secure™ travel locks for all pocket doors
10" VegaTouch touchpad system for complete integration of coach controls/ mobile app control
Premium LED 12V recessed ceiling lighting
Powered solar day and black out night shades
Samsung® 50" 4K UHD Smart TV
Samsung® 32" LED Slim 1080P Smart TV in front overhead
Bose® Soundbar 700 sound system with wireless surround sound speakers
Whirlpool® stacked washer and dryer

KITCHEN

Induction cooktop with matching wood cover
Dishwasher with wood raised panel door front
Quartz countertops with stainless steel sink and dimmer LED accent lighting
Whirlpool® Gold 1.9 cu. ft. convection microwave oven
Whirlpool® stainless steel residential refrigerator with ice maker and water dispenser
Maxxair® power exhaust vent fan
Large deep drawer for waste basket with easy access trash chute (trash chute not available in 45F)

BEDROOM

Select Comfort® Sleep Number® king-size mattress
Large cedar-lined wardrobe with motion activated LED closet rod light
Ceiling fan
Samsung® Blu-ray player
Nightstands with USB ports and quartz tops

Bose® Solo 5 sound bar
Samsung® 32" LED Slim 1080P Smart TV

BATHROOM

Quartz countertop with integrated glass sinks and LED accent lighting
Porcelain tiled shower walls and floor with skylight and frameless glass shower door
Maxxair® Deluxe power exhaust vent fan with intake
Pivoting shower head and separate hand-held spray wand
Teakwood shower seat (not available in 45F)
Theford® Tecma china toilets with push button flush (45A, 45F, 45W)

SAFETY

Combination carbon monoxide detector and gas alarm
Porch light and motion sensor security lights
Safe
Security system with glass shatter sensors
Smoke alarm

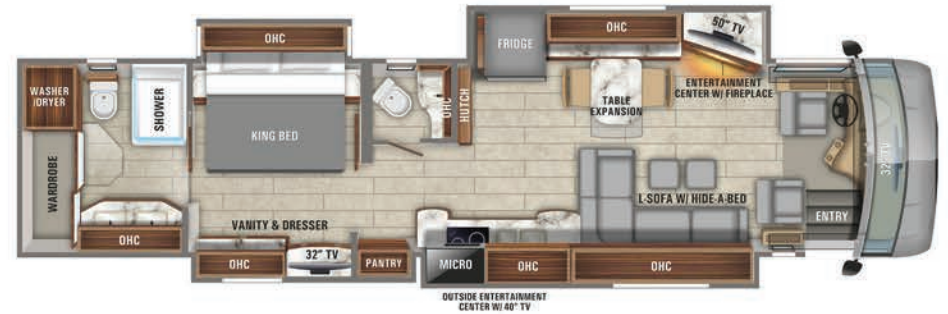
OPTIONS

Canadian Standards (CSA)
Booth dinette (45A, 45B, 45W, 45Y)
Free standing table with 4 chairs driver side (45X)
100" power theater seat passenger side (45B, 45Y)
100" power reclining sofa passenger side (45B, 45Y)
82" power theater seat passenger side (45A)
82" power theater seat driver side (45W)
74" power theater seat passenger side (45F, 45X)
Winegard® In-Motion satellite dome
Winegard® WIFI Extender with 4G/LTE
Solar panels (Dual-100 watt) with Morningstar® SunSaver™ Duo solar panel charge controller

CORNERSTONE FLOORPLANS



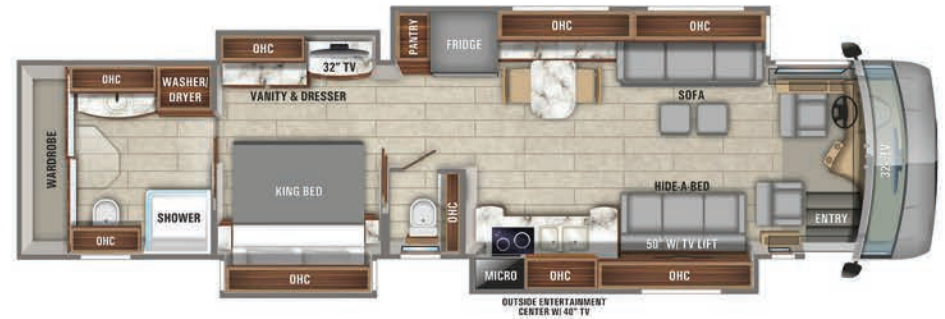
45A | B AND C



45B | B, D AND E



45F | C



45W | B AND C

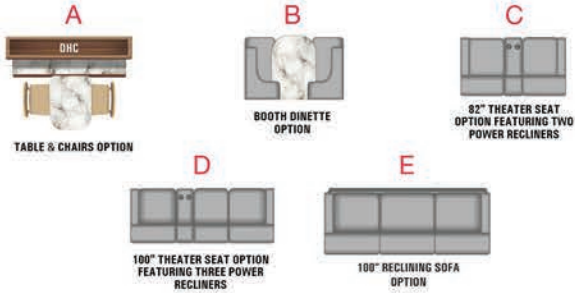


45X | A AND C



45Y | B, D AND E

SPECS & OPTIONS

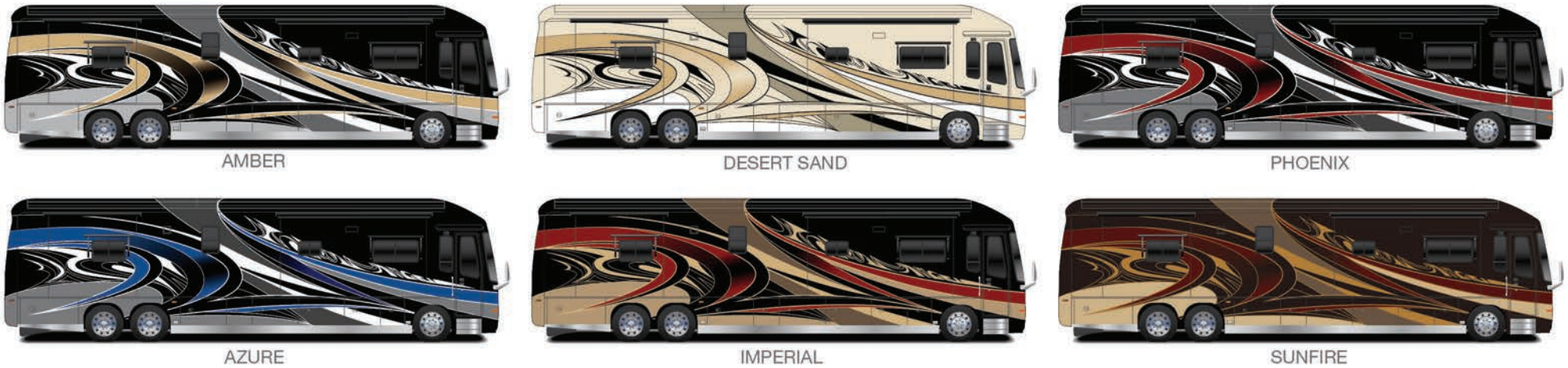


Floorplan	GVWR (lbs.)	GCWR (lbs.)	Front GAWR (lbs.)	Rear GAWR (lbs.)	Tag GAWR (lbs.)	Wheel Base	Overall Length	Exterior Height w/ A/C & Satellite	Exterior Width	Interior Height	Fresh Water Capacity (gal.)	Grey Waste Water Capacity (gal.)	Black Waste Water Capacity (gal.)
ALL	54,000	74,000	20,000	20,000	14,000	320"	44' 11"	12' 11"	101"	84"	100	62	41

CORNERSTONE INTERIORS



CORNERSTONE PAINT SELECTIONS



ANTHEM



Shown: Natural Glazed Cherry with Russet Décor

STANDARDS & OPTIONS

CHASSIS

Spartan® K2 raised rail chassis
Cummins® L9 turbocharged 450 HP engine
1,250-lb. ft. torque at 1,400 RPM
Allison® 3000 MH 6-speed transmission
Remote air connection
Equalizer hydraulic automatic coach leveling system
Valid air leveling system with auxiliary air compressor
170-amp alternator
Bilstein® shocks- 60mm front axle & 46mm rear/tag axles
ABS disc brakes on front axle, drum brakes on drive and tag axle
Chassis batteries (2) 12V
15-gal. DEF tank (dual fill)
1,000 watt engine block heater
Two-stage engine brake
150-gal. fuel tank (dual fill)
15,000-lb. hitch with 7/4-pin plug
Side-mounted radiator
Reyco® Granning® IFS 20,000-lb. front axle with air suspension
Dana rear drive axle 20,000-lb., tag axle 12,000-lb.
4.88 rear axle ratio
Tag axle air dump
Michelin® XZA 1 365/80R 22.5" tires (front) and XZA 2 315/80R 22.5" tires (rear)
Tire pressure monitor system
Spartan® Safehaul tow vehicle air brake system
Automatic traction control
55-degree turning radius

CONSTRUCTION

2- 1/2" exterior wall with welded tubular aluminum construction and high-gloss, gel-coat fiberglass
2" x 4" floor truss construction
3/4" 7-ply plywood main floor decking
X-Bridge™ frames welded into chassis frame
Steel-reinforced front cap and windshield frame
Insulation with reflective Flexfoil® floor (R-33), roof (R-24), sidewalls (R-16), front and rear caps (R-22)
One-piece fiberglass roof with 3/8" plywood decking and 4" arched aluminum roof truss
Flush-mounted electric-powered slideout rooms both with VegaTouch and separate rocker switch controls
Heated basement storage area
Aluma-Tru™ superstructure construction on 12"-16" centers

HEAT, A/C, WATER, AND POWER

15,000-BTU low profile A/Cs (3) with heat pumps and condensation drain system
L16 AGM batteries (4), (6V/390 amp hrs. ea.)
Black holding tank sprayer
Sani-Con® Macerator holding tank dump system with manual gate valves plus manual back-up
50-amp power cord with electric reel
Onan® 12,500-watt diesel generator with auto gen start, on powered slide-out tray

Aqua-Hot® 450 diesel hydronic water and heating system with in-floor heat throughout and engine preheat
3,000 watt pure sine wave inverters (2)
Premium surge protector with smart transfer switch
Water hose with electric powered reel
City and tank water filtration system
Trutank™ ultra sonic tank monitoring system displayed on VegaTouch screen
Winterizing drain system

EXTERIOR

LED accent lights on underside of slideout rooms passenger side
Manual slideout cargo tray
2.8 cu.ft. exterior Dometic® refrigerator/freezer on slide out tray
LED lit chrome clearance accent light
Daytime running lights
Girard® power entrance door awning with LED lights
Power engine door with manual override
Diamond Shield™ front protective film mask
40" Samsung® 4K UHD Slim, Smart TV and Bose® Solo 5 sound bar on TV bracket with extend, tilt and swivel arm
LED high and low beam headlights
Lighted grab handle with keypad system
LED fog lights, marker lights, turn lights, accent lights, and docking lights
Chrome, heated, remote control, side-view mirrors with blind-spot indicators
Roof mounted Girard® Vision dual pitched patio awnings with LED lights
Full-width rear mudflap, with chrome "Anthem" nameplate
Winegard® Trav'ler® satellite dish DIRECTV® - standard with USA option
Winegard® Trav'ler® satellite dish Shaw TV - standard with CSA option
Premier Bus Armor 8" stainless steel trim
Exterior heated utility center with 5" LED monitor panel
Third brake light
Winegard® Razar automatic powered TV antenna
Frameless, tinted, dual-pane, safety-glass windows
Girard® Ultra slideout and window shade awnings

COCKPIT

E-Z Steer™ electric, adjustable power steering assist with steering angle sensor
Two dual USB ports and 12V socket for charging
Xite™ 360° camera system that displays on digital dash screen
Valid 15" digital dash with selector knob and three selection main screens
Villa® 6-way power, lumbar, heated Ultraleather® driver and passenger seats with integrated seatbelt
Powered flush stepwell cover

Glass panel, dual 9" touchscreen in-dash infotainment center with Rand McNally™ RV navigation, Bluetooth, SiriusXM™, AM/FM tuner, integrated camera control, house mode whole coach audio distribution, and integrated VegaTouch coach control
Blind spot monitoring system displayed on digital dash screen
Powered, adjustable brake and accelerator pedals
Push button start system
VIP wood-grain, leather-wrapped, power tilt and telescoping steering wheel with integrated controls for radio, cruise, and wipers
JBL® premium audio 11-speaker sound system with amplifier, speakers and DVC subwoofer
Powered front sun visors and privacy shade

INTERIOR

Central vacuum system
Samsung® HD Blu-ray player
LED lit fireplace with 1500W heating element (44B, 42DEQ)
Hand laid high-gloss 8" x 48" porcelain tile floor
Villa Ultraleather furniture throughout
Aire-Secure™ travel locks for all pocket doors
10" VegaTouch touchpad system, for complete integration of coach controls/mobile app control
Premium LED 12V recessed ceiling lighting
Powered solar day and black out night shades
Samsung® 50" 4K UHD Smart TV
Samsung® 32" LED Slim 1080P Smart TV in front overhead
Bose® SoundTouch 300 sound system
Whirlpool® stacked washer and dryer

KITCHEN

Induction cooktop with interior matching wood cover
Dishwasher with wood raised panel door front
Solid surface countertops with stainless steel sink and dimmer LED accent lighting
Porcelain tile backsplash
Whirlpool® Gold 1.9 cu. ft. convection microwave oven
Whirlpool® residential stainless steel refrigerator with ice maker and water dispenser
Maxxair® power exhaust vent fan
Large, deep drawer for waste basket with easy access trash chute (trash chute not available in 44F)

BEDROOM

Select Comfort® Sleep Number® king size mattress
Ceiling fan
Large cedar-lined wardrobe with motion activated LED light
Samsung® Blu-ray player
Nightstands with USB ports and solid surface tops
Bose® Solo 5 sound bar
Samsung® 32" LED Slim 1080P Smart TV

BATHROOM

Solid surface countertops with integrated glass sink and LED accent lighting in master bath
Porcelain tiled shower wall with skylight
Maxxair® Deluxe power exhaust vent fan with intake
Fixed shower head with separate hand held spray wand
Teakwood shower seat (not available in 44F)
Theford® Tecma china toilet(s) with push button flush (44A, 44F, 42H, 44W); Tecma in master bath & Aria in stool room (44B)

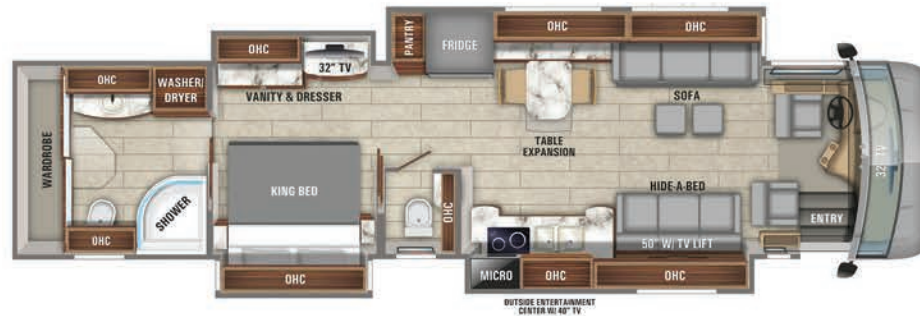
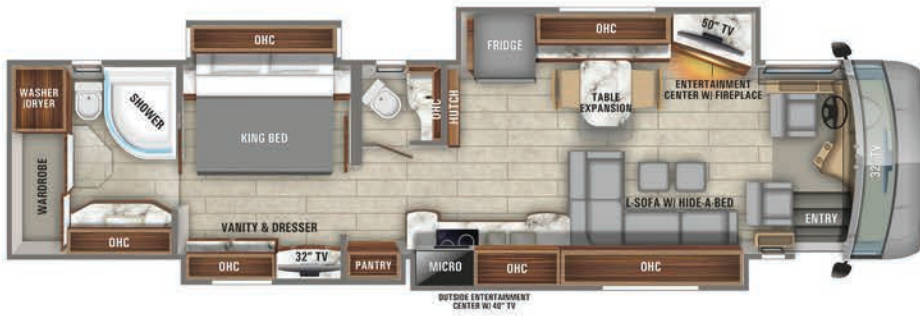
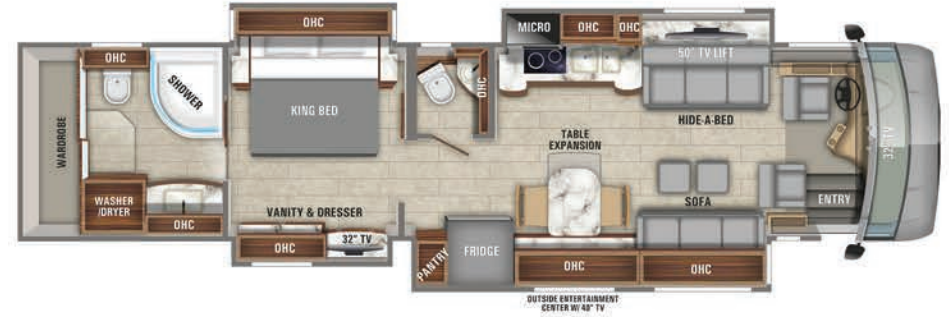
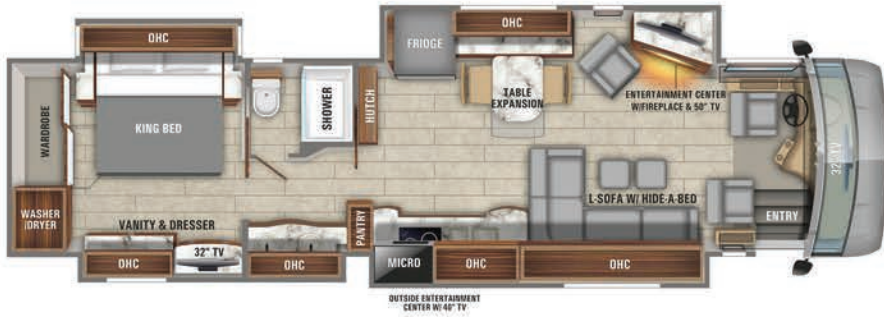
SAFETY

Combination carbon monoxide detector and gas alarm
Porch light and motion sensor security lights
Safe
Security system with glass shatter sensors
Smoke alarm

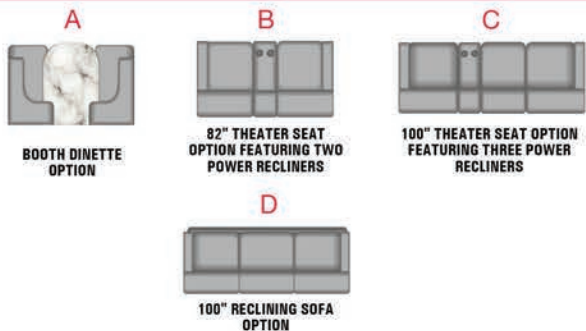
OPTIONS

Canadian Standards (CSA)
Booth dinette (44A, 44B, 44W, and 42DEQ)
100" reclining sofa (44B and 42DEQ)
Winegard® In-Motion dome, roof mounted satellite dish
Solar panels (Dual-100 watt) with Morningstar® SunSave™ Duo solar panel charge controller
100" theater seat (44B and 42DEQ)
82" theater seat (44A)
82" theater seat (44W)
74" theater seat (44F)
Winegard® WIFI extender with 4G/LTE

ANTHEM FLOORPLANS



SPECS & OPTIONS



Floorplan	GVWR (lbs.)	GCWR (lbs.)	Front GAWR (lbs.)	Rear GAWR (lbs.)	Tag GAWR (lbs.)	Wheel Base	Overall Length	Exterior Height w/ A/C & Satellite	Exterior Width	Interior Height	Fresh Water Capacity (gal.)	Grey Waste Water Capacity (gal.)	Black Waste Water Capacity (gal.)
42DEQ	52,000	67,000	20,000	20,000	12,000	296"	43' 5"	12' 11"	101"	84"	100	62	41
44A, 44B, 44F, 44W	52,000	67,000	20,000	20,000	12,000	320"	44' 11"	12' 11"	101"	84"	100	62	41

ANTHEM INTERIORS



WOOD OPTIONS



ANTHEM PAINT SELECTIONS



BALLET



JIVE



TANGO



JAZZ



SALSA



WALTZ

ASPIRE



Shown: Stonewall Grey Wood with Cobblestone Décor

STANDARDS & OPTIONS

CHASSIS

Spartan® K2 raised rail chassis
Cummins® L9 turbocharged 450 HP engine 1,250-lb. ft. torque at 1,400 RPM
Allison® 3000 MH 6-speed transmission
Remote air connection
Equalizer hydraulic automatic coach leveling system
170-amp alternator
Bilstein™ 46mm shocks
ABS disc brakes on front axle, drum brakes on drive and tag axle (ABS disc brakes on front and rear axle on 38M and 40P)
Chassis batteries 2-12V
15-gal. DEF tank (dual fill except on 38M, 40P, 44R)
1,000 watt engine block heater
Two-stage engine brake
Reyco® Granning® IFS 17,000-lb. front axle with air suspension
150-gal. fuel tank (100-gal. fuel tank on 38M and 40P) dual fill
15,000-lb. hitch with 7/4-pin plug, (10,000-lb hitch on 38M and 40P)
Side-mounted radiator
Dana rear axle 20,000-lb., tag axle 12,000-lb. (rear axle 24,000-lb. and no tag on 38M and 40P)
4.88 rear axle ratio
Tag axle air dump (not available on 38M and 40P)
Michelin® 315/80R 22.5" tires (front) and 295/80R 22.5" tires (rear)
Spartan® Safehaul tow vehicle air brake system
55-degree turning radius

CONSTRUCTION

2- 1/2" exterior wall with welded tubular aluminum construction and high-gloss, gel-coat fiberglass
2" x 4" floor truss construction
3/4" 7-ply plywood main floor decking
X-Bridge™ frames welded into chassis frame
Steel-reinforced front cap and windshield frame
Insulation with reflective Flexfoil floor (R-33), roof (R-24), sidewalls (R-16), front and rear caps (R-22)
One-piece fiberglass roof with 3/8" plywood decking and 4" arched aluminum roof truss
Heated basement storage area
Aluma-Tru™ superstructure construction on 12"-16" centers

HEAT, A/C, WATER, AND POWER

15,000-BTU low profile A/Cs (3) with heat pumps and condensation drain system
L16 AGM batteries (2),(6V/390 amp hrs. each)
Black holding tank sprayer
Sani-Con® Macerator holding tank dump system with manual gate valves with manual back-up
50-amp power cord with electric reel

Onan® 10,000-watt diesel generator with auto gen start on slide-out tray
Aqua-Hot® 400 diesel hydronic water and heating system with in-floor heat throughout
3,000 watt pure sine wave inverter
Premium surge protector with smart transfer switch
Water hose with electric reel
City and tank water filtration system
Trutank™ ultrasonic tank monitoring system
Winterizing drain system

EXTERIOR

Slideout storage tray
Daytime running lights
Girard® power entrance door awning with LED lights
Power rear engine door with manual override
Diamond Shield™ front protective film mask
Samsung® 40" 4K UHD Smart TV with JBL Bar Studio sound bar on TV bracket with extend, tilt and swivel arm
LED low beam headlights, Halogen high beam headlights
Lighted grab handle with keypad system
Halogen fog lights
LED marker lights, turn lights, accent lights
LED docking lights
Chrome, heated, remote control, side-view mirrors with integrated cameras
Roof mounted Girard® Vision dual pitched patio awnings with LED lights
Full-width rear mudflap, with chrome "Aspire" nameplate
Winegard® Trav'ler® satellite dish DIRECTV - standard with USA option
Winegard® Trav'ler® satellite dish Shaw TV - standard with CSA option
Exterior heated utility center with 5" Firefly® system monitor panel
Winegard® Rayzar Z1 TV antenna
Frameless, dual-pane, tinted safety-glass windows

COCKPIT

(2) dual USB ports and 12V socket for charging
Camera system with two side cameras and digital rear camera
6-way power, lumbar, Ultra-Leather driver and passenger seats with integrated seatbelt
Powered flush stepwell cover
Dual 9" touchscreen in-dash infotainment center with Rand McNally™ RV navigation, Bluetooth, SiriusXM™, AM/FM tuner, integrated camera control

Spartan® Message Center with LCD display featuring: odometer, tachometer, fuel economy, fuel remaining, outside air temp., coolant temp., engine oil temp. and pressure, transmission temp., turbo boost pressure, air pressure, trip meter, speed and voltage
Power adjustable brake and accelerator pedals
Wrapped dash with molded side consoles
Push button start system
VIP, tilt and telescoping steering wheel with integrated controls for cruise and wipers
JBL® premium audio sound system with speakers, amplifier and DVC sub-woofer
Powered front sun visors and privacy shade
Ultra-Vision® one-piece wrap-around tinted windshield

INTERIOR

Bar area with beverage chiller, rain glass door on upper cabinet with LED accent lighting (44R)
Central vacuum system
10" VegaTouch touchpad system, for complete integration of coach controls/mobile app control also
Samsung® HD Blu-ray player in living area
Hand laid high gloss 8" x 48" porcelain tile floor
Flexsteel® furniture
Aire-Secure™ travel locks for all pocket doors
Premium recessed LED 12V lighting
Manual solar day and blackout night shades
Samsung® 50" 4K UHD Smart TV
Samsung® 32" LED 1080P Smart TV in front overhead
Samsung® HW-M360 sound bar with sub-woofer in living area
Whirlpool® stacked washer and dryer

KITCHEN

Induction cooktop with matching wood cover
Dishwasher drawer with wood raised panel drawer front
Solid surface countertops with stainless steel sink and dimmer LED accent lighting
Whirlpool® 1.9 cu. ft. convection microwave oven
Whirlpool® stainless steel residential refrigerator with ice maker and water dispenser
Maxxair® power vent exhaust fan
Large deep drawer for waste basket with easy access trash chute (trash chute not available on 40P and 44R)

BEDROOM

King-size gel memory foam mattress
Motion activated LED light in wardrobe
Ceiling fan
Samsung® Blu-ray player
Nightstands with USB ports and solid surface tops
JBL® Studio sound bar
Samsung® 32" LED Slim 1080P Smart TV

BATHROOM

Solid surface countertops with integrated sink and dimmer LED accent lighting
Textured porcelain tile shower with skylight and clear glass shower door
Thetford® china toilets: Tecma with push button flush, and Aqua-Magic with foot flush in stool room (44B, 40P)
Fixed shower head and separate hand held spray wand
Maxxair® power exhaust fan with intake

SAFETY

Combination carbon monoxide detector and gas alarm
Porch light and motion sensor security lights
Security system with glass shatter sensors
Smoke alarm

OPTIONS

Canadian Standards (CSA)
Booth dinette driver side (44B, 42DEQ, 40P, 44W)
100" power reclining sofa (44B, 42DEQ)
100" power theater seat (44B, 42DEQ)
82" power theater seat (38M, 44R, 44W)
74" power theater seating and 60" hide-a-bed (40P)
74" power theater seat (44F)
Winegard® In-Motion dome, roof mounted satellite dish
Winegard® WIFI Extender with 4G/LTE
Power baggage door locks
Solar panels (Dual-100 watt) with Morningstar SunSaver Duo solar panel charge controller
Batteries - 2 additional AGM, 4 total (44B, 44F, 44R, 44W)
LED lit fireplace with 1500w heating element (38M, 44B, 42DEQ)

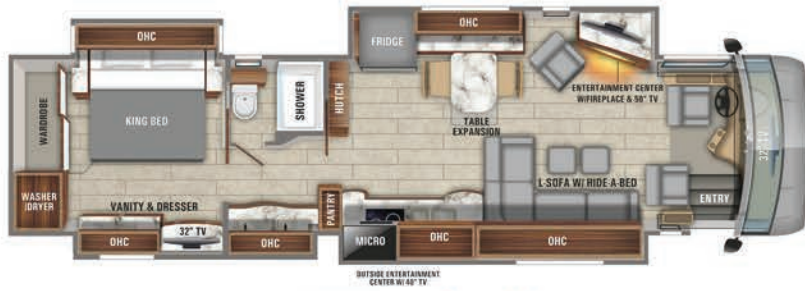
ASPIRE FLOORPLANS



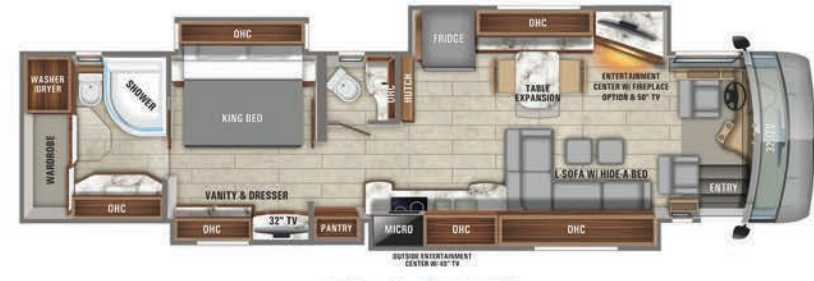
38M | A



40P | A, B AND D



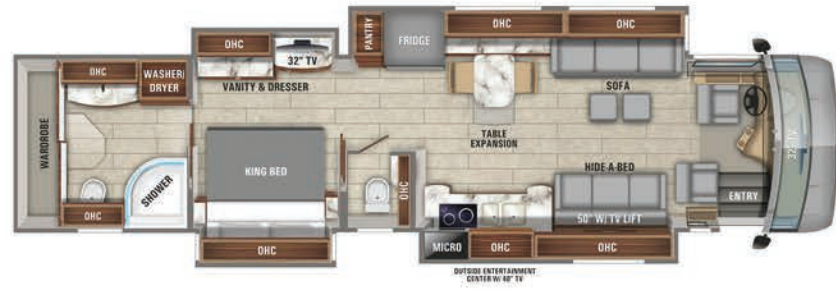
42DEQ | A AND E



44B | A AND E



44R | B

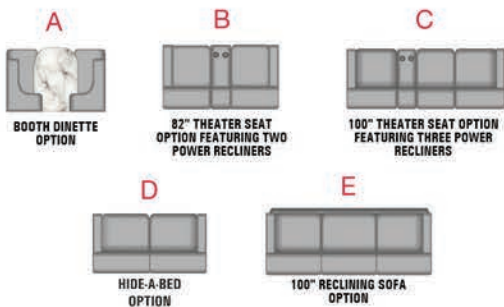


44W | A AND B



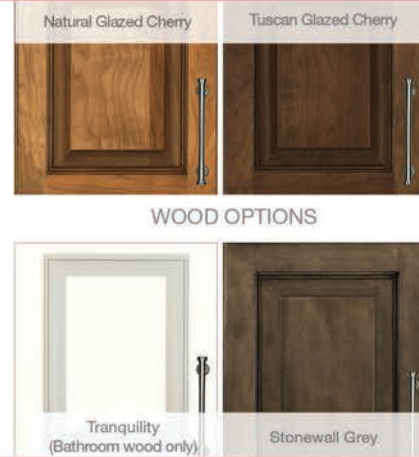
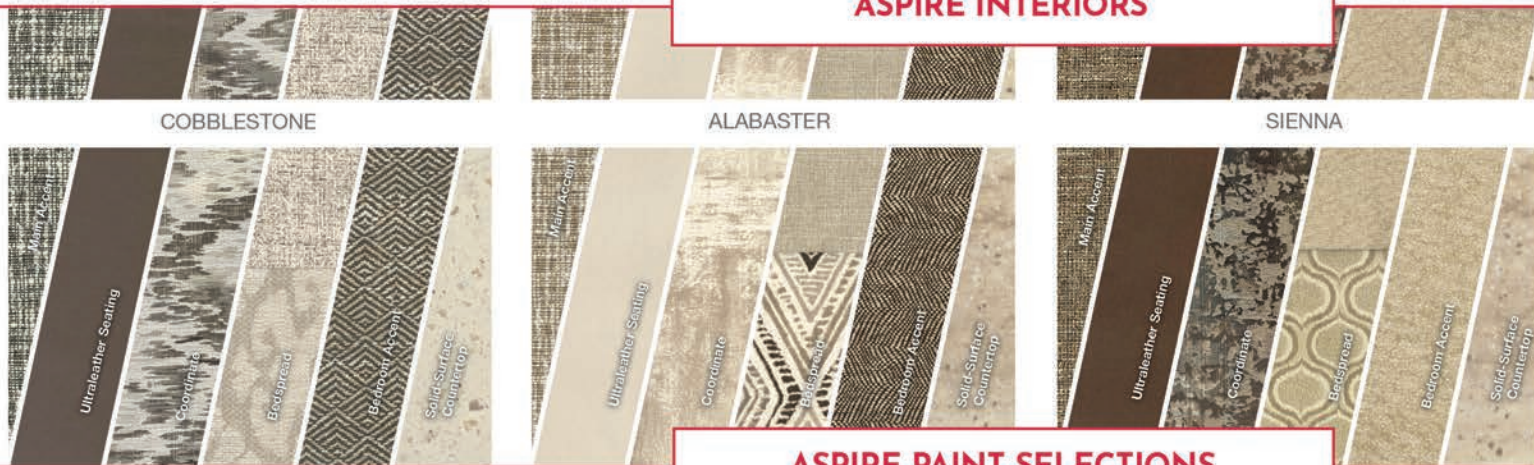
44F | B

SPECS & OPTIONS



Floorplan	GVWR (lbs.)	GCWR (lbs.)	Front GAWR (lbs.)	Rear GAWR (lbs.)	Tag GAWR (lbs.)	Wheel Base	Overall Length	Exterior Height w/ A/C & Satellite	Exterior Width	Interior Height	Fresh Water Capacity (gal.)	Grey Waste Water Capacity (gal.)	Black Waste Water Capacity (gal.)
38M-40P	41,000	51,000	17,000	24,000	N/A	261"	40' 11"	12' 11"	101"	84"	100	62	41
42DEQ	49,000	64,000	17,000	20,000	12,000	296"	43' 5"	12' 11"	101"	84"	100	62	41
44B, 44R, 44W, 44F	49,000	64,000	17,000	20,000	12,000	320"	44' 11"	12' 11"	101"	84"	100	62	41

ASPIRE INTERIORS



ASPIRE PAINT SELECTIONS



GOLDEN ROD



MARIGOLD



TIGER



IRIS



POPPY

REATTA XL



Shown: Stonewall Grey Wood with Onyx Décor

STANDARDS & OPTIONS

STANDARD CHASSIS EQUIPMENT

Spartan® K2 raised rail chassis
Cummins® L9 turbocharged 380 HP engine 1,150-lb. ft. torque at 1,400 RPM
Variable geometry turbo (VGT) engine brake
Allison® 3000 MH 6-speed transmission
1,000 watt engine block heater
IFS front suspension
Dana rear axle
4.88 rear axle ratio
10,000-lb. hitch with 7/4-pin plug
Rear-mounted radiator
Power adjustable brake and accelerator pedals
Bilstein 46mm shocks
100-gal. fuel tank (driver side fill)
10-gal. DEF tank (driver side fill)
Michelin 275/80R 22.5" tires
Chassis batteries (2) 12V
170-amp alternator
Remote air connection
Spartan® Safehaul Tow Brake air system
Equalizer hydraulic automatic coach leveling

STANDARD CONSTRUCTION FEATURES

X-Bridge frames welded into chassis frame
Heated basement storage
Insulation with reflective Flexfoil roof (R-24), front and rear caps (R-22)
Floor with vacuum bonded layers of Darco underbelly, a welded aluminum frame, R-9 bead-foam insulation and 5/8" Strukturwood
High Gloss Sidewalls gelcoat vacuum bonded laminated with R-8 bead-foam insulation
Electric-powered slideout rooms
One-piece fiberglass roof with 3/8" plywood decking and 4" arched aluminum roof truss
Steel-reinforced front cap and windshield frame

HEAT, A/C, POWER AND WATER EQUIPMENT

Aqua-Hot 250 hydronic water and heating system
Electric radiant floor heating system
15,000-BTU A/Cs (2) with heat pumps
50-amp power cord on electric powered reel
Onan 10,000-watt diesel generator with auto gen start on slide-out tray
2,000-watt pure sine wave inverter with 100 amp battery charger
L16 AGM batteries (2), (6v/390 amp hrs. ea.)
Surge protector transfer switch

Black holding tank sprayer
Sani-Con® Macerator holding tank dump system with manual gate valves
City and tank water filtration system
Winterizing drain system
Fireplace (37K Only)

STANDARD EXTERIOR EQUIPMENT

3M® front protective film mask
Halogen high and low beam headlights
Halogen fog lights
Daytime running lights
LED marker, turn lights, docking lights, accent lights and license plate light
Keypad system for keyless entry
Power patio awning with LED lights
Power entrance door awning with LED lights
Slide-out awnings
Window awnings
Heated, remote control, side-view mirrors with integrated cameras
Frameless, dual-pane, tinted, safety-glass windows
Exterior 39" LED TV on adjustable TV bracket
Exterior utility center
Winegard Trav'ler satellite dish DIRECTV - standard with USA option
Winegard Trav'ler satellite dish Shaw TV - standard with CSA option
Winegard Rayzar Z1 TV antenna
Full-width rear mudflap, with chrome "Entegra" nameplate

COCKPIT AMENITIES

Powered front sun visors and privacy shade
Power adjustable driver and passenger seats with integrated seatbelt and power foot rests
Tilt and telescoping steering wheel with integrated controls for cruise and wipers
Spartan® Message Center with LCD display featuring: odometer, tachometer, fuel economy, fuel remaining, outside air temp, coolant temp, engine oil temp and pressure, transmission temp, turbo boost pressure, air pressure, trip meter, speed and voltage
Sony® 7" touchscreen in-dash infotainment center with navigation, Bluetooth, Sirius XM and AM/FM tuner
Side and rear view cameras with designated 7" in-dash screen for easy visibility
Two dual USB ports and 12V socket for charging
Power adjusting pedals

STANDARD INTERIOR EQUIPMENT

10" VegaTouch touch screen coach systems control panel
LED recessed 12V lighting
Hand laid 12" x 24" polished porcelain tile flooring
Flexsteel furniture
Manual solar day and black out night shades
Front overhead Insignia 32" LED TV
Insignia 50" LED TV
Insignia sound bar
LG Blu-ray player
Decorative ceiling fixture with integrated accent lighting

STANDARD KITCHEN EQUIPMENT

Solid surface countertops with stainless steel sink
Induction cooktop
1.5 cu. ft. convection microwave oven
Residential refrigerator with ice maker and water dispenser
Power exhaust fan
Two slide out trays in overhead cabinet

STANDARD BEDROOM EQUIPMENT

King size pillow-top mattress on tilt bed
Insignia 32" LED TV
LG Blu-ray player

STANDARD BATHROOM EQUIPMENT

Solid surface countertop with integrated sink
Thetford Aqua Magic toilet with foot flush
One-piece fiberglass shower with skylight
Power exhaust fan with intake

STANDARD SAFETY EQUIPMENT

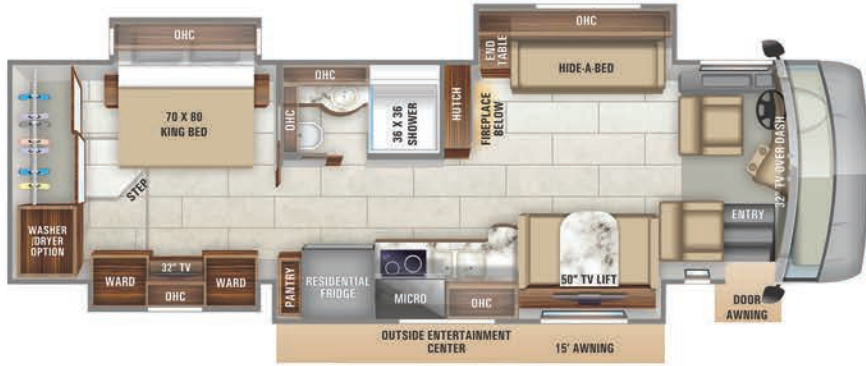
Porch light
Smoke alarm
Combination carbon monoxide detector and gas alarm
Safe

OPTIONS

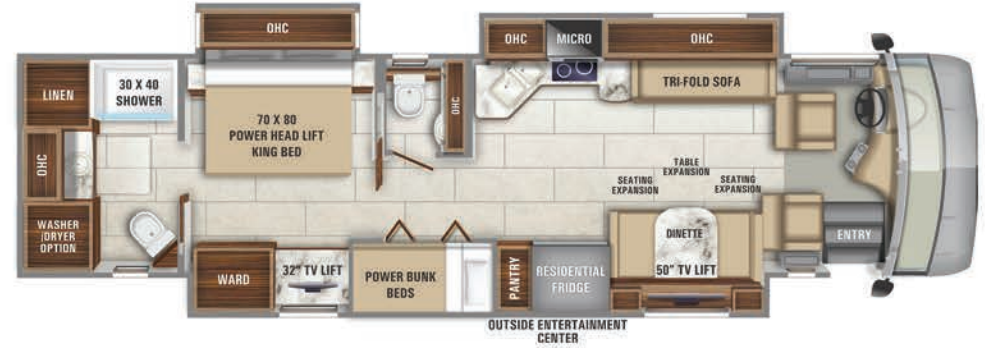
Canadian Standards (CSA)
68" powered theater seating
34" bedroom fireplace (40Q2)
Winegard® In-Motion satellite dome
Winegard® WIFI Extender with 4G/LTE
Basement slideout storage tray (1)

Solar power prep
Central vacuum system
3rd A/C unit 15,000-BTU with heat pump
Whirlpool stacked washer and dryer
Interior decors in Pinecone and Eggshell available with Natural Cherry semi-gloss and High Gloss Tuscan Cherry cabinetry. Onyx decor available with high gloss Stonewall Grey cabinetry
82" drivers-side theater seating (37K)

REATA XL FLOORPLANS



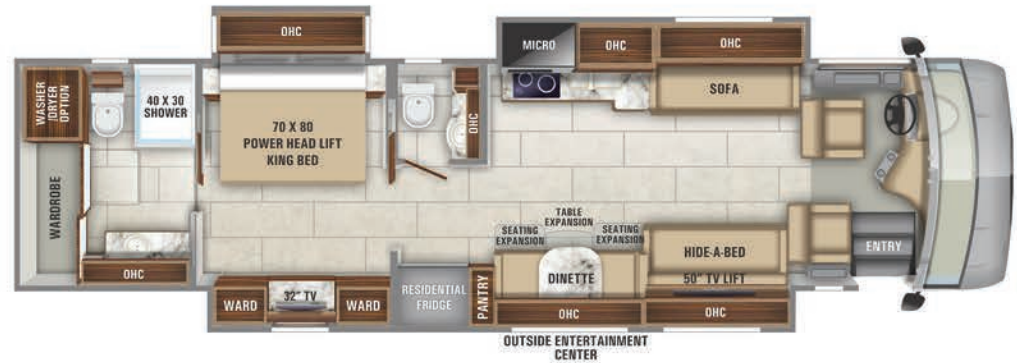
37K | A



39BH | A



39T2 | A



40Q2 | A AND B

SPECS & OPTIONS



THEATER SOFA OPTION



FIRE PLACE OPTION

Floorplan	GVWR (lbs.)	GCWR (lbs.)	Front GAWR (lbs.)	Rear GAWR (lbs.)	Wheel Base	Overall Length	Exterior Height w/ A/C & Satellite	Exterior Width	Interior Height	Fresh Water Capacity (gal.)	Grey Waste Water Capacity (gal.)	Black Waste Water Capacity (gal.)
37K	36,600	42,000	12,600	20,000	230"	37' 10"	12' 10"	101"	84"	100	62	41
39T2	36,320	46,320	14,320	22,000	255"	39' 11"	12' 10"	101"	84"	100	62	41
39BH	36,320	46,320	14,320	22,000	255"	39' 11"	12' 10"	101"	84"	100	62	41
40Q2	36,320	46,320	14,320	22,000	267"	40' 11"	12' 10"	101"	84"	100	62	41

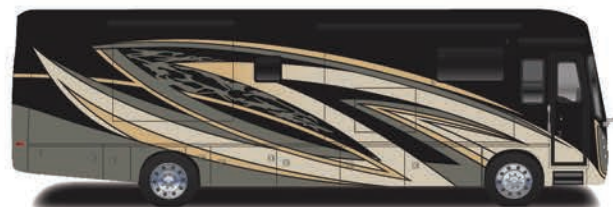
REATA XL INTERIORS



REATA XL PAINT SELECTIONS



IRONSTONE



MOJAVE



JASPER



SUNSTONE

REATTA



Shown: Natural Glazed Cherry with Pinecone Décor (See Reatta Interiors for Current Valance Fabric)

STANDARDS & OPTIONS

STANDARD CHASSIS EQUIPMENT

Spartan® K1 raised rail chassis
Cummins® B6.7 turbocharged 360 HP engine
800-lb. ft. torque at 1,800 RPM
Independent Front Suspension (IFS) 12,600 lb.
front axle (37MB) & 14,320 (39BH,39T2)
Allison® 3000 MH 6-speed transmission
Remote air connection
Equalizer hydraulic automatic coach leveling
170-amp alternator
Bilstein® 46mm shocks
Variable geometry turbo (VGT) engine brake
Chassis batteries (2) 12V
10-gal. DEF tank
750 watt engine block heater
100-gal. fuel tank
10,000-lb. hitch with 7/4-pin plug
Rear-mounted radiator
Rear axle 20,000-lb. (37MB) 22,000-lb.
(39BH/39T2)
4.88 rear axle ratio
Michelin® 275/80R 22.5" tires
Spartan® Safehaul tow brake system

STANDARD CONSTRUCTION FEATURES

Floor with vacuum bonded layers of Darco underbelly, a welded aluminum frame, R-9 bead-foam insulation and 5/8" Structurewood® X-bridge™ frames welded into chassis frame
Steel-reinforced front cap and windshield frame
Insulation with reflective Flexfoil roof (R-24), front and rear caps (R-22)
One-piece fiberglass roof with 3/8" plywood decking and 4" arched aluminum roof truss
Electric-powered slide-out rooms
Heated basement storage
Sidewalls high gloss gelcoat vacuum bonded laminated with R-8 bead-foam insulation

HEAT, A/C, POWER AND WATER EQUIPMENT

15,000-BTU A/Cs (2) with heat pump
L16 AGM batteries (2) (6V/390 amp hrs. ea.)
Black holding tank sprayer
Sani-Con® Macerator holding tank dump system with manual gate valves

50-amp power cord
Onan 8,000-watt diesel generator with auto-gen start on slide-out tray
35,000 BTU furnace (37MB)/ 1-20,000 and 1-30,000 (39BH, 39T2)
2,000-watt pure sine wave inverter with 100-amp battery charger
Surge protector transfer switch
16.5 gal. propane tank
City and tank water filtration system
10 gal. gas/electric water heater
Winterizing drain system
Fireplace (37K only)

STANDARD EXTERIOR EQUIPMENT

Daytime running lights
Power entrance door awning with LED lights
3M front protective film mask
Exterior 39" LED TV on adjustable TV bracket
Halogen high/low beam headlights and fog lights
Grab handle and keypad system for keyless entry
LED marker lights, turn lights, license plate light, accent lights, & docking lights
Heated, remote control, side-view mirrors with integrated cameras
Power patio awning with LED lights
Window awnings
Full-width rear mudflap
Winegard Trav'ler satellite dish DIRECTV - standard with USA option
Winegard Trav'ler satellite dish Shaw TV - standard with CSA option
Slideout awnings
Exterior utility center
Winegard Rayzar Z1 TV antenna
Frameless, tinted, dual-pane, safety-glass windows
Keypad system for keyless entry

COCKPIT AMENITIES

Power adjustable brake and accelerator pedals
(2) dual USB ports and 12V socket for charging
Sony 7" touchscreen in-dash infotainment center with navigation, Bluetooth, Sirius XM, AM/FM tuner, and side/rearview camera display
Power adjustable driver and passenger seats

Spartan® Message Center with LCD display featuring: odometer, tachometer, fuel economy, fuel remaining, outside air temp, coolant temp, engine oil temp & pressure, transmission temp, turbo boost pressure, air pressure, trip meter, speed and voltage
Tilt and telescoping steering wheel with integrated controls for cruise and wipers
Powered front sun visors and privacy shade

STANDARD INTERIOR EQUIPMENT

7" VegaTouch touch screen coach systems control panel
LG Blu-ray player
Hand laid 12" x 24" polished porcelain tile flooring
Flexsteel® furniture
LED recessed 12V lighting
Manual solar day and blackout night shades
Insignia™ 50" LED TV
Insignia™ sound bar
Decorative ceiling feature with integrated accent lighting

STANDARD KITCHEN EQUIPMENT

Induction cooktop
Solid surface countertops with stainless steel sink
1.5 cu. ft. convection microwave oven
Residential refrigerator with ice maker and water dispenser
Power exhaust fan

STANDARD BEDROOM EQUIPMENT

King size pillow top mattress (37MB); King size pillow top mattress on tilt bed (39BH, 39T2)
LG Blu-ray player
Insignia 32" LED TV

STANDARD BATHROOM EQUIPMENT

Solid surface countertops with integrated sink
One-piece fiberglass shower with skylight
Power exhaust fan with intake
Thetford® Aqua Magic toilet with foot flush

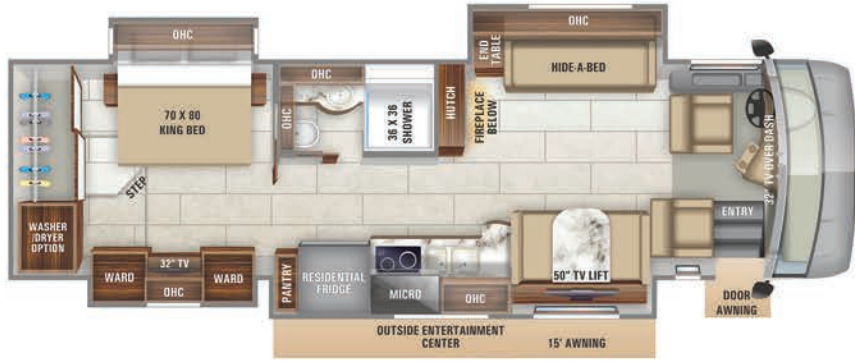
STANDARD SAFETY EQUIPMENT

Combination carbon monoxide detector and LP gas alarm
Porch light
Smoke alarm

OPTIONS

3rd A/C unit 15,000-BTU with heat pump (39T2, 39BH)
Canadian Standards (CSA)
Central vacuum system
LED lit fireplace with 1500W heating element (37MB ONLY)
Winegard® In-Motion satellite dome
Slideout storage tray (1)
Solar power prep
74" theater seating driver-side (37MB)
68" theater seating driver-side (39T2, 39BH)
Winegard® WIFI extender with 4G/LTE
Stacked washer and dryer
82" drivers side theater seating (37K Only)

REATA FLOORPLANS



37K | A



37MB | A



39BH | A



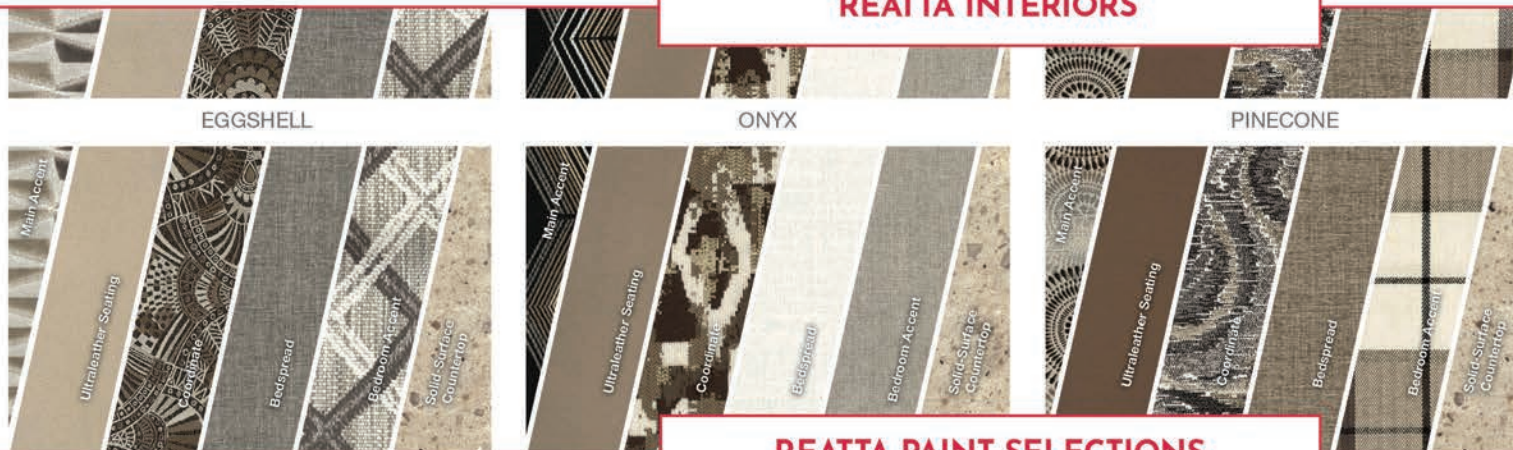
39T2 | A

SPECS & OPTIONS



Floorplan	GVWR (lbs.)	GCWR (lbs.)	Front GAWR (lbs.)	Rear GAWR (lbs.)	Wheel Base	Overall Length	Exterior Height w/ A/C & Satellite	Exterior Width	Interior Height	Fresh Water Capacity (gal.)	Grey Waste Water Capacity (gal.)	Black Waste Water Capacity (gal.)
37K	32,600	42,000	12,600	20,000	236"	37' 10"	12' 10"	101"	84"	100	62	41
37MB	32,600	42,000	12,600	20,000	236"	37' 10"	12' 10"	101"	84"	100	62	41
39BH	36,320	46,320	14,320	22,000	261"	39' 11"	12' 10"	101"	84"	100	62	41
39T2	36,320	46,320	14,320	22,000	261"	39' 11"	12' 10"	101"	84"	100	62	41

REATA INTERIORS



REATA PAINT SELECTIONS



COPPER CANYON



RED SEA



GLACIER BAY



SHENANDOAH



ENTEGRACOACH, INC., P.O. BOX 460, MIDDLEBURY, IN 46540
WWW.ENTEGRACOACH.COM

Gross Vehicle Weight Rating (GVWR): The maximum permissible weight of the motorcoach, including the Unloaded Vehicle Weight (UVW) plus passengers, personal items, all cargo, fluids, options and dealer-installed accessories. The GVWR is equal to or greater than the sum of the UVW and the Cargo Carrying Capacity. Gross Axle Weight Rating (GAWR): The maximum allowable weight each axle assembly is designed to carry, as measured at the tires, therefore including the weight of the axle assembly itself. Gross Combined Weight Rating (GCWR): The maximum allowable combined weight of the motorcoach used as a tow vehicle and the attached towed vehicle.



Entegra Coach, Inc. | P.O. Box 460 | Middlebury, IN 46540 See dealer for further information and prices. All information in this brochure and on www.entegracoach.com is the latest available at the time of publication approval. Entegra Coach reserves the right to make changes and to discontinue models without notice or obligation. Photography may show optional equipment or props used for decoration purposes only. RVs built for sale in Canada may differ to conform to Canadian codes. ENTEGRA COACH, JAYCO and the JAYCO BIRD IN FLIGHT are registered trademarks of Jayco, Inc. Printed in U.S.A. 30K 05/17 ©2019 Entegra Coach, Inc. 274786

