

WWW.KEYSTONERV.COM/COUGAR

Cougar

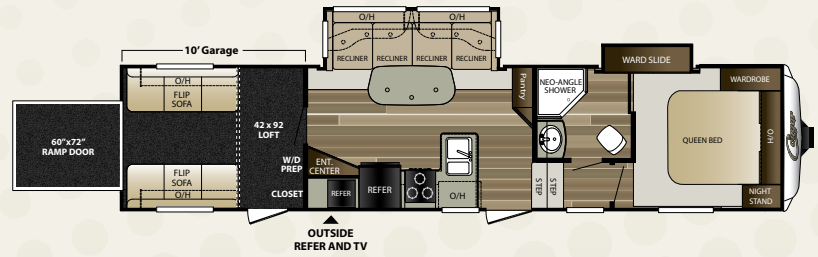
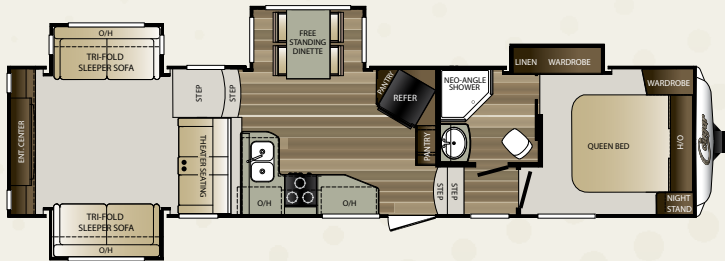
by Keystone



EASTERN EDITION

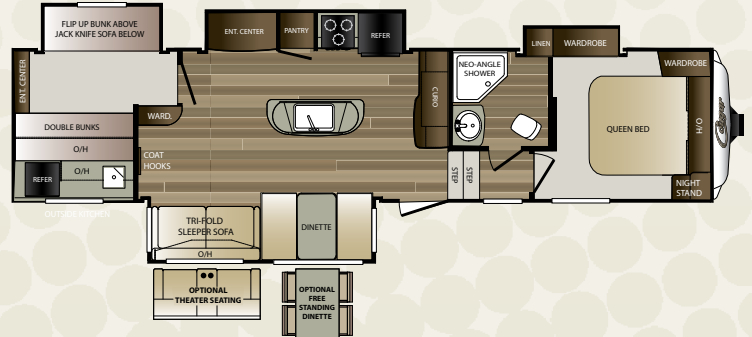
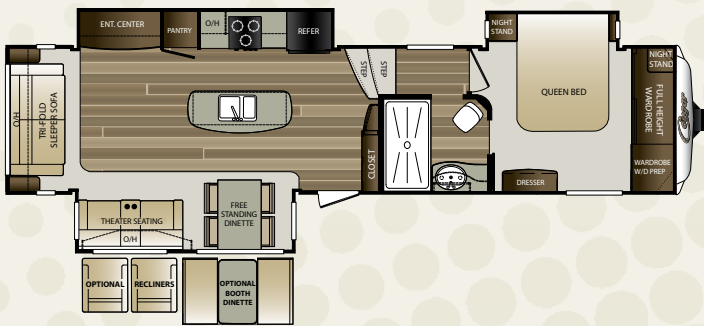
Cougar

by Keystone



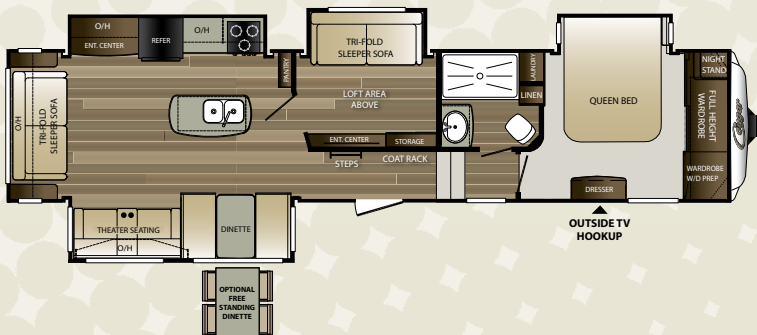
326RDS LENGTH: 38' 1" WEIGHT: 10,462

326SRX LENGTH: 37' 7" WEIGHT: 9,930



333MKS LENGTH: 38' 1" WEIGHT: 10,315

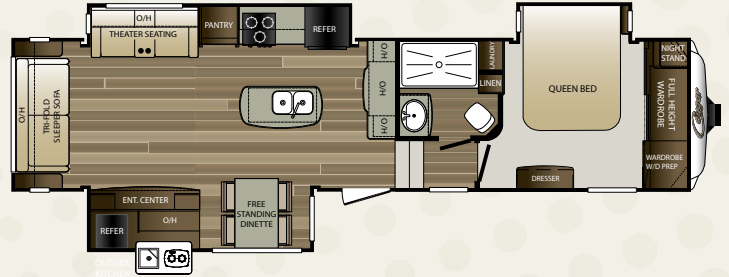
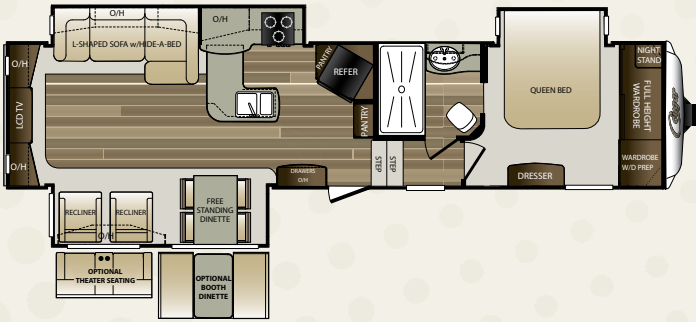
336BHS LENGTH: 38' WEIGHT: 10,325



359MBI NEW LENGTH: 40' 1" WEIGHT: 11,245

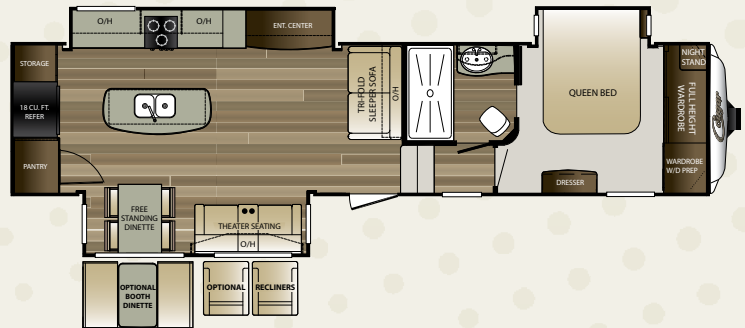
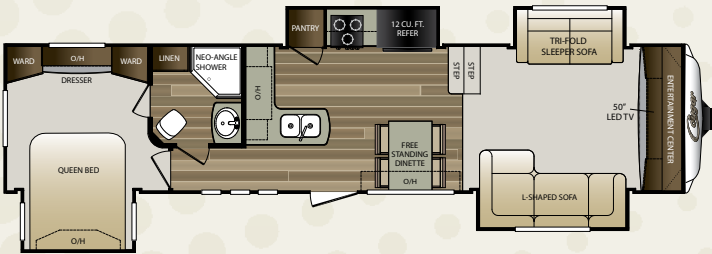
MID-PROFILE FIFTH WHEELS

MID-PROFILE FIFTH WHEEL FLOOR PLANS



327RES LENGTH: 37' 9" WEIGHT: 10,495

327RLK NEW LENGTH: 37' 2" WEIGHT: 10,315



337FLS LENGTH: 38' 1" WEIGHT: 9,998

341RKI LENGTH: 38' 1" WEIGHT: 10,375

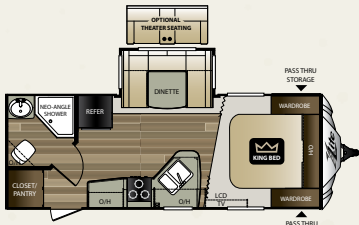
Stay in Touch



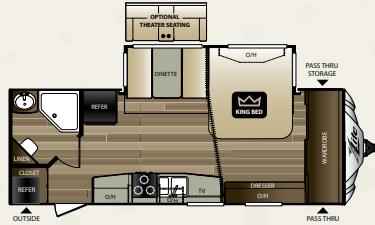
Cougar is always just a touch away. You'll find 360 virtual tours, location of your nearest dealer, photos, videos and all of the latest information about Cougar on our easy to navigate website. Everything you need can be accessed anytime, day or night, from home or on the road. You can also find us on the Keystone RV facebook.

www.keystonerv.com/Cougar

X-LITE TRAVEL TRAILER FLOOR PLANS



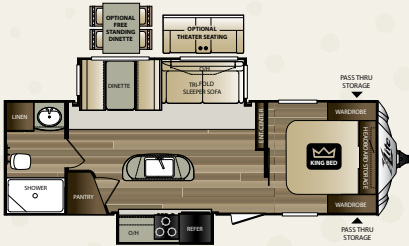
21RBS LENGTH: 25' 9" WEIGHT: 5,201



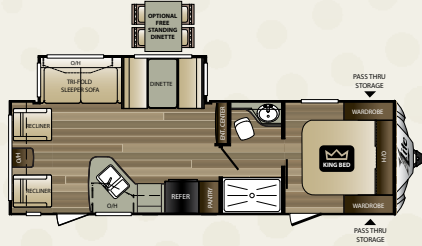
24RBS NEW LENGTH: 29' 6" WEIGHT: 5,475



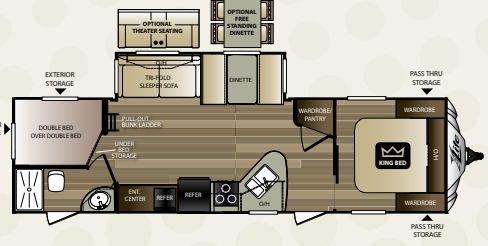
25RDB LENGTH: 29' 6" WEIGHT: 5,755



26RBI LENGTH: 30' 2" WEIGHT: 6,100

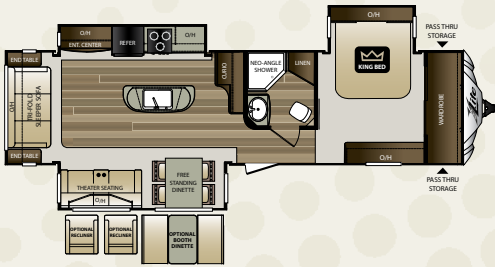


28RLS LENGTH: 31' WEIGHT: 6,150



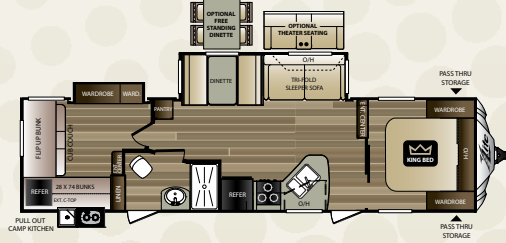
29BHS NEW LENGTH: 34' 11" WEIGHT: 6,760

Ground Control TT Ground Control TT Equipped



30RLI LENGTH: 36' WEIGHT: 7,704

Ground Control TT Ground Control TT Equipped

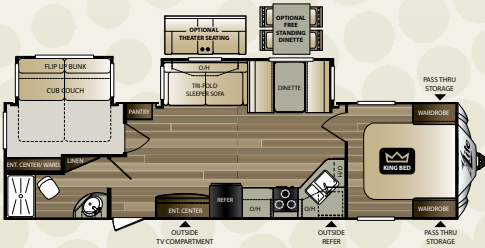


31SQB LENGTH: 35' 11" WEIGHT: 7,115



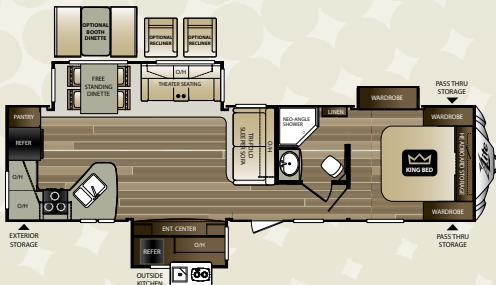
32FBS LENGTH: 35' 10" WEIGHT: 7,400

Ground Control TT Ground Control TT Equipped



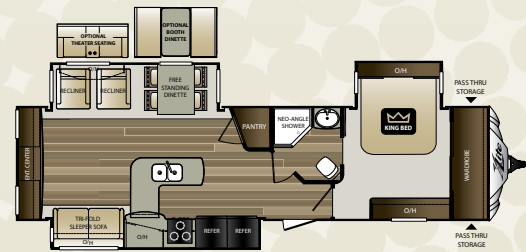
32FKB NEW LENGTH: 35' 10" WEIGHT: 7,145

Ground Control TT Ground Control TT Equipped



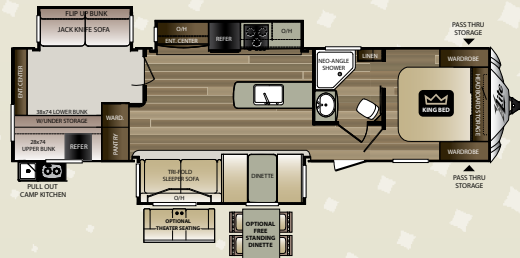
33MLS LENGTH: 36' 2" WEIGHT: 7,675

Ground Control TT Ground Control TT Equipped



33SAB LENGTH: 36' 10" WEIGHT: 8,390

Ground Control TT Ground Control TT Equipped



34TSB LENGTH: 37' 5" WEIGHT: 8,075

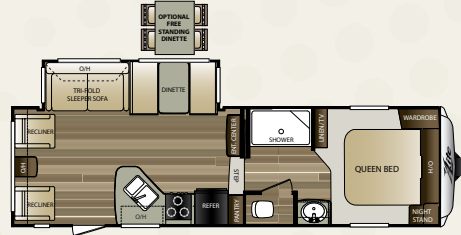
Ground Control TT Ground Control TT Equipped

X-LITE TRAVEL TRAILERS

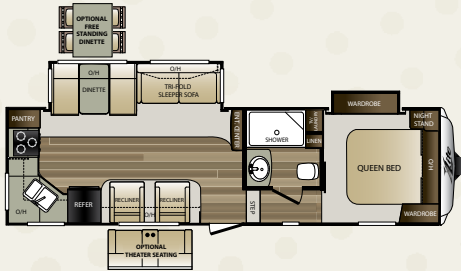
X-LITE FIFTH WHEEL FLOOR PLANS



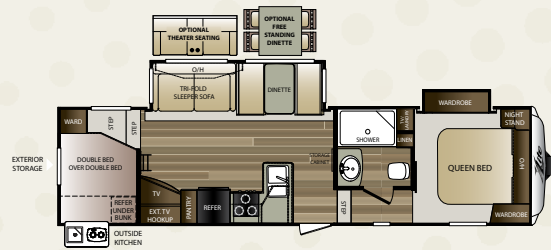
25RES LENGTH: 28' 11" WEIGHT: 7,035



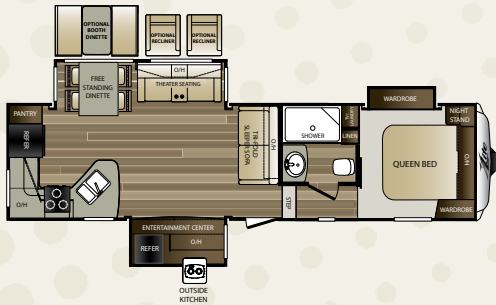
26RLS LENGTH: 29' 4" WEIGHT: 6,770



27RKS LENGTH: 30' 5" WEIGHT: 7,150



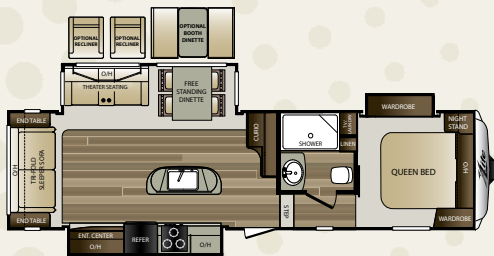
28RDB LENGTH: 32' 11" WEIGHT: 7,648



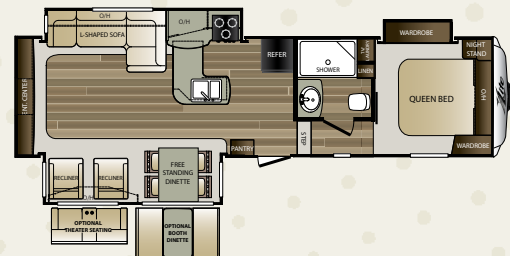
28RKS LENGTH: 32' 11" WEIGHT: 8,170



28SGS LENGTH: 30' 10" WEIGHT: 7,756



29RLI LENGTH: 32' 7" WEIGHT: 7,814



29RES LENGTH: 32' 11" WEIGHT: 8,020



www.keystonerv.com/cougar-xlite



X-LITE FIFTH WHEELS

WEIGHTS AND MEASUREMENTS

COUGAR MID-PROFILE FIFTH WHEELS

MODEL	SHIPPING WEIGHT	CARRYING CAPACITY	HITCH	LENGTH*	EXTERIOR WIDTH	HEIGHT	FRESH WATER	WASTE WATER	GRAY WATER	LPG	AWNING(S)
326RDS	10462	1778	1840	38' 1"	8'	13' 2"	60	38	76	60	20'
326SRX	9930	2730	2260	37' 7"	8'	13' 2"	60	38	76	60	19'
327RES	10495	1730	1825	37' 9"	8'	12' 3"	60	38	76	60	15'/11'
327RLK	10315	2265	2180	37' 2"	8'	12' 3"	60	38	76	60	13'
333MKS	10315	2065	1980	38' 1"	8'	12' 3"	60	38	76	60	14'/11'
336BHS	10325	1910	1835	38' 0"	8'	12' 6"	60	38	76	60	12'/11'
337FLS	9998	2567	2165	38' 1"	8'	13' 2"	60	38	76	60	16'
341RKI	10375	1845	1820	38' 1"	8'	13' 2"	60	38	76	60	14'/11'
359MBI	11305	2695	2000	40' 1"	8'	13' 2"	60	38	76	60	15'/11'

COUGAR X-LITE TRAVEL TRAILERS

MODEL	SHIPPING WEIGHT	CARRYING CAPACITY	HITCH	LENGTH*	EXTERIOR WIDTH	HEIGHT	FRESH WATER	WASTE WATER	GRAY WATER	LPG	AWNING(S)
21RBS	5201	1999	550	25' 9"	8'	11' 4"	43	30	30	40	16'
24RBS	5510	1990	745	26' 11"	8'	11' 4"	43	30	30	40	17'
25RDB	5755	2045	755	29' 6"	8'	11' 4"	43	30	60	40	16'
26RBI	6100	1700	710	30' 2"	8'	11' 4"	43	30	60	40	19'
28RLS	6150	1650	760	31'	8'	11' 4"	43	30	60	40	20'
29BHS	6760	1440	1020	34'	8'	11' 4"	43	30	60	40	20'
30RLI	7704	1796	1055	36'	8'	11' 4"	43	30	60	40	12'/11'
31SQB	7115	1885	920	35' 11"	8'	11' 4"	43	30	60	40	19'
32FBS	7400	2100	965	35' 10"	8'	11' 4"	43	30	60	40	17'
32FKB	7420	2380	1005	34' 11"	8'	11' 4"	43	30	60	40	20'
33MLS	7675	1875	750	36' 2"	8'	11' 4"	43	30	60	40	12'
33SAB	8390	1455	1045	36' 10"	8'	11' 4"	43	30	60	40	12'
34TSB	8095	1505	1005	37' 5"	8'	11' 4"	43	30	60	40	8'/11'

COUGAR X-LITE FIFTH WHEELS

MODEL	SHIPPING WEIGHT	CARRYING CAPACITY	HITCH	LENGTH*	EXTERIOR WIDTH	HEIGHT	FRESH WATER	WASTE WATER	GRAY WATER	LPG	AWNING
25RES	7035	2965	1405	28' 11"	8'	11' 11"	43	30	60	60	15'
26RLS	6895	3105	1270	29' 4"	8'	11' 11"	43	30	60	60	13'
27RKS	7195	2805	1355	30' 5"	8'	11' 11"	43	30	60	60	16'
28RDB	7655	2315	1475	32' 11"	8'	11' 11"	43	30	60	60	19'
28RKS	8255	1745	1515	32' 11"	8'	11' 11"	43	30	60	60	20'
28SGS	7830	2170	1480	30' 10"	8'	11' 11"	43	30	60	60	10'
29RLI	7875	2125	1610	32' 7"	8'	11' 11"	43	30	60	60	10'
29RES	8020	1980	1380	32' 11"	8'	11' 11"	43	30	60	60	10'/11'

Product information is as accurate as possible as of the date of publication of this brochure. Features, floor plans, and specifications are subject to change without notice. Please also consult Keystone's web site at keystonerv.com for more current product information and specifications. Tow Vehicle Disclaimer. CAUTION: Owners of Keystone recreational vehicles are solely responsible for the selection and proper use of tow vehicles. All customers should consult with a motor vehicle manufacturer or their dealer concerning the purchase and use of suitable tow vehicles for Keystone products. Keystone disclaims any liability or damages suffered as a result of the selection, operation, use or misuse of a tow vehicle. KEYSTONE'S LIMITED WARRANTY DOES NOT COVER DAMAGE TO THE RECREATIONAL VEHICLE OR THE TOW VEHICLE AS A RESULT OF THE SELECTION, OPERATION, USE OR MISUSE OF THE TOW VEHICLE. *Length is defined as the distance from the centerline of the hitch pin/coupler to rear bumper of the trailer.

STANDARDS AND OPTIONS

INTERIOR	XL TT	XL FW	COUGAR	EXTERIOR	XL TT	XL FW	COUGAR	EXTERIOR (CONT.)	XL TT	XL FW	COUGAR
Gas/electric water heater (quick recovery 16.2 gallons)	S	S	S	Fully walkable roof and fully walkable slide roof	S	S	S	Cougar camp remote control	—	S	S
Residential shower/tub surround	S	S	S	3/8" walkable roof decking	S	S	S	LP quick connect	S	S	S
Residential toilet with foot pedal flush	S	S	S	5" fabricated stamped steel roof trusses	S	S	—	Cable & satellite prep	S	S	S
Power vent in bath	S	S	S	One-piece seamless tan T.P.O. roof	S	S	S	Battery disconnect	S	S	S
Cougar Platinum Series Orthopedic Sleep System Mattress	—	—	S	Vaulted interior ceiling	S	—	—	Black tank flush	S	S	S
King bed	S	—	—	Aluminum framed sidewalls, floors, front , rear and slide rooms	S	S	S	Outside shower	S	S	S
True home 12 Volt CD/DVD system with Bluetooth	S	S	S	High gloss medallion gel coated Filon® fiberglass	—	—	S	Solar prep	S	S	S
Home theatre sound bar	—	—	S	Laminated Filon sidewalls	S	S	—	Space for dual batteries	S	S	S
LCD TV	S	S	S	T-Mold bulb seals on all slide outs to keep slider sweeps	S	S	S	Backup camera prep	S	S	S
Winegard Omni Directional Antenna	S	S	S	Max Turn Technology front cap	—	S	S	MOR/ryde CRE 3000 Suspension	—	S	S
Satellite/Cable hook-up	S	S	S	Front cap with LED docking lights	S	S	S	E-Z lube hubs on axles	S	S	S
12V charging station	S	S	S	Patented front cap hitch vision	—	S	S	Aluminum rims	S	S	S
Theater seating * (most floor plans)	O	O	O	Rock Guard Protection on front cap	S	—	—	SAFETY			
"Smart Slide" free-standing dinette	O	O	O	Frameless windows	—	—	S	Carbon monoxide detector	S	S	S
Solid surface countertops	S	S	S	Black trim safety glass windows	S	S	—	Fire extinguisher	S	S	S
Stainless steel microwave oven with turn style	S	S	S	All windows in main slide out open	S	S	S	LP sensor	S	S	S
8 cu ft refrigerator (12 cu. ft. in 337FLS, 341RKI)	S	S	S	Slam latch baggage doors	—	S	S	Smoke detector	S	S	S
Stainless steel deep oversized kitchen basin with sink cover	S	S	S	Oversized exterior baggage doors	S	S	S	Manual backup on all main slide outs	S	S	S
Hand glazed hardwood cabinet doors throughout	S	S	S	XL Pass through storage with entertainment hook-up	S	S	S	Spare tire and Carrier	S	S	S
Oversized pots and pans drawer (most models)	S	S	S	Fold down bike/storage rack (N/A 326SRX)	—	—	S	<i>Standard features and options are subject to change without notice.</i>			
Residential full-extension , steel ball bearings drawer guides	S	S	S	Friction hinge entry door	S	S	S				
15,000 BTU ducted A/C	S	S	S	Aluminum entry steps	S	S	S				
2nd, 13,500 BTU air conditioner	O	O	O	XL Folding grab handle	S	S	S				
50 Amp service, pre-wired and prepped for 2nd air conditioner	O	O	S	Main entrance step light	S	S	S				
Fireplace * Most Floor plans	O	O	S	Electric awning with LED lighting	S	S	S				
LED interior/exterior lights	S	S	S	All weather outside speakers	S	S	S				
Interior entry motion light	S	S	S	Polar Package Plus, zero degree rated	—	—	S				
Max Air fan	—	—	S	Polar package	S	S	—				
MCD roller shades	—	—	S	R-15 astro-foil in slide out floors	S	S	S				
Pleated shades throughout	S	S	S	R-15 astro-foil in underbelly	—	—	S				
MCD roller shades	—	—	S	Fully Heated and Enclosed Underbelly with Enclosed Dump Valves	S	S	S				
Pleated shades throughout	S	S	—	4 point auto electric level up* (Most Floor plans)	S	O	S				

LEGEND

XLTT = X-LITE TRAVEL TRAILERS
XLFW = X-LITE FIFTH WHEELS
COUGAR = MID-PROFILE FIFTH WHEELS
S = STANDARD | O = OPTIONAL | — = NOT AVAILABLE

DECOR OPTIONS

Cougar and Cougar X-Lite offers three different interior decor options. Choose between Vineyard, Cashmere and Twig.

VINEYARD



CASHMERE



TWIG



OUR COMMITMENT TO DELIVERING THE BEST PRODUCT IN THE INDUSTRY MAKES COUGAR **FIRST** IN ITS CLASS.

Launched in 1998, the Keystone Cougar product line was the first introduction into the emerging "half ton light" series. Due to the popularity of half ton trucks, Cougar quickly found its place as a product that offered more innovation, quality and affordability than existing brands at that time. Within two short years Cougar became the #1 mid-profile fifth wheel in North America!

Today, Cougar remains focused on 1/2 ton and 3/4 ton product offerings. Our commitment to delivering the best product in the industry makes Cougar **FIRST** in its class.

Fit and Finish – A Quality Circle Award Winner for the past 10 consecutive years. Cougar's Fit and Finish Speaks for itself.

Innovation – Patented features such as Hitch Vision and true half ton towable fifth wheels floorplans that can't be duplicated. Cougars Innovation is second to none.

Residential – With Residential features such as Raised Panel Hardwood Cabinets, Chef's Gourmet Kitchens, and Walk-in Pantries. Your Cougar Residential features will make you feel like you are at home.

Storage – With Class- leading storage both inside and out, you will always have a place to store your camping gear while on the road.

Towability – Known as the most towable unit in its class, All Cougar floorplans have frames engineered specifically for that floorplan and proper axle placement to ensure that your Cougar is always safe while in tow.

DSI WINNER 2007 | 2008 | 2009 | 2010 | 2011 | 2012 | 2013 | 2014 | 2015 | 2016



SINCE 1998

Cougar has been the pinnacle of excellence in the RV industry, earning the DSI award for 10 consecutive years. Come find out why...

THE DSI (DEALER SATISFACTION INDEX) AWARD RATES THE LEVEL OF SATISFACTION THE DEALERS HAVE IN A MANUFACTURER. IT RATES MANUFACTURERS IN MANY AREAS SUCH AS: PRODUCT DESIGN, PRODUCT RELIABILITY & QUALITY, WARRANTY SUPPORT, AND PARTS SUPPORT.



KEYSTONE RV RECOMMENDS BUYING LOCALLY

It's up to you where you purchase your new Cougar, but may we suggest your local dealer? Not only does it help your local economy and provide jobs, but it will also give you an opportunity to develop a service relationship with someone that will come to know you and your coach. Congratulations on finding the best built, best equipped, best value in the industry, and happy travels!

YOUR LOCAL DEALER:

Colton RV & Marine
3122 Niagara Falls Blvd
North Tonawanda, NY 14120
(716) 694-0188
www.ColtonRV.com

Colton RV & Marine
3443 Southwestern Blvd.
Orchard Park, NY 14127
(716) 957-3250
www.Coltonrv.com



2642 Hackberry Drive | PO Box 2000
Goshen, IN 46527-2000
(574) 535-2100

 **Keystone RV Company**
www.keystonerv.com

Go RVing
Life's A Trip

Member
RVIA
RECREATION VEHICLE
INDUSTRY ASSOCIATION

NOVEMBER 2016