

# CATALINA

## DELUXE EDITION

**CATALINA**  
DELUXE EDITION

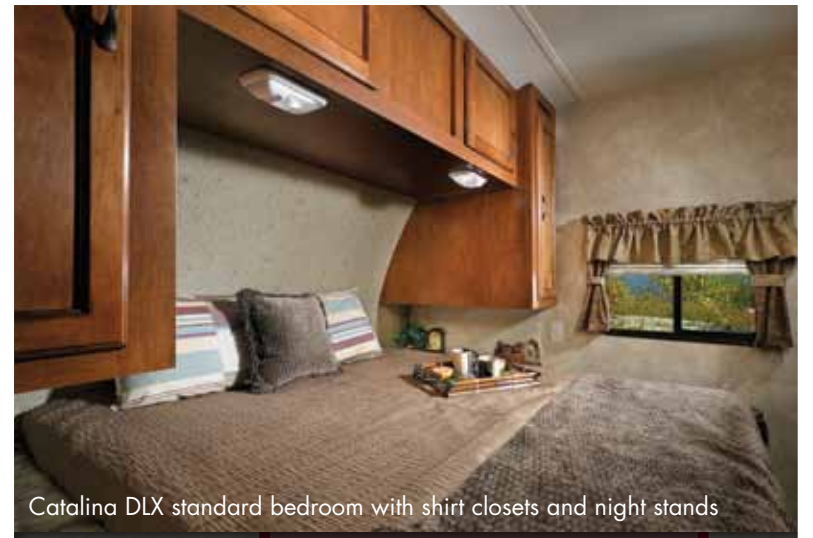


32TSBH shown with Chipotle decor (front to back view)



Coachmen RV has a long history of quality and value. The Coachmen Catalina Deluxe Edition continues the long-standing tradition. We are proud to present a travel trailer that has a quality build and more features than any of our competition. With innovative floor plan designs that feature plenty of storage, room, and comfort—the Catalina Deluxe Edition is setting the standard for the industry!!!

32TSBH Bunk area



Catalina DLX standard bedroom with shirt closets and night stands



Standard Exterior Entertainment Center/  
Outdoor Camp Kitchen (32TSBH Only)



Exterior Camper Kitchen STD. 27FBCK, OPT. 30BHS and 32BHDS



Self edged  
thermofoil  
countertops

32TSBH Kitchen storage

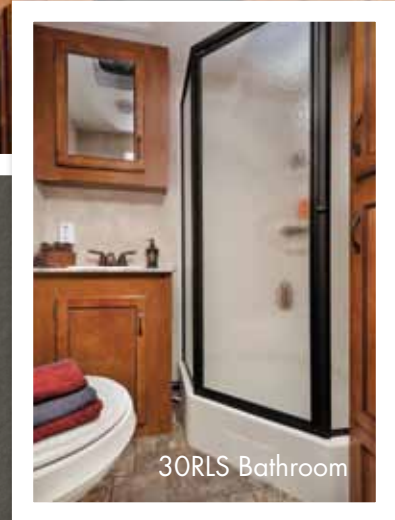
The Catalina Deluxe Edition offers floor plans ranging from 25' to 37' with a wide variety of different floor plans. Here at Coachmen, we don't believe in cutting corners, we believe in maximizing customer value.



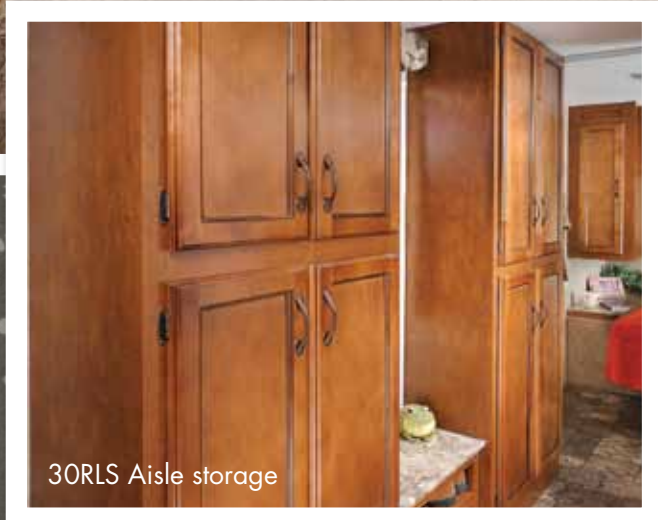
30RLS shown with Maki decor (front to back view)



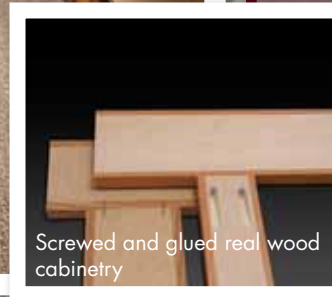
Featured on this page is the Catalina Deluxe Edition 30RLS. This is a floor plan that is unique to Catalina and is a perfect example of our innovative layouts. As you can see in the pictures on this page, there is plenty of open room, and plenty of storage space. Being creative and innovative with our floor plan designs and always maintaining a focus on quality has propelled us to the top! We are proud to present our customers with quality built travel trailers made to fit their needs!



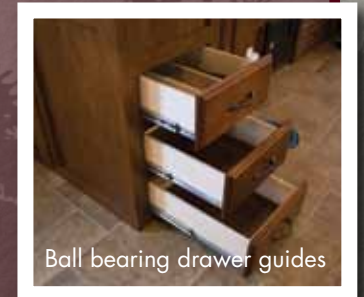
30RLS Bathroom



30RLS Aisle storage



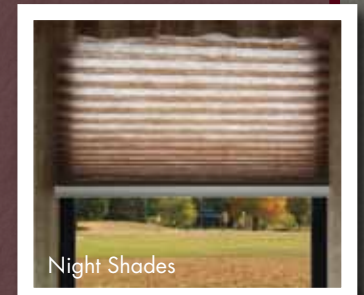
Screwed and glued real wood cabinetry



Ball bearing drawer guides



Stonecast sink



Night Shades

**CATALINA DELUXE VALUE ADDED PACKAGES-** CUSTOMER VALUE PACKAGE,  
COMFORT PACKAGE, PLUS PACKAGE AND POWER PACKAGE!



A.



B.



C.



D.



E.



F.



G.



H.



I.



J.



K.



L.

A. Black tank flush. This feature makes cleaning out your black tank a breeze.

B. 6 Gal. Gas/ Electric DSI remote operated water heater. (Fire up your water heater from inside your Santara.)

C. Two (2) LP bottles with E-Z access cover with automatic change over.

D. Outside shower with separate hot and cold water controls.

E. AM/FM, CD/DVD radio with speakers and iPod® docking port. More wattage for your cottage!!!

F. Lighted power tongue jack, setting up your camper has never been easier or safer.

G. Mounted, telescoping swing arm TV bracket.

H. Safety first! Lippert components ABS self adjusting brake system.

I. Four (4) stabilizer jacks.

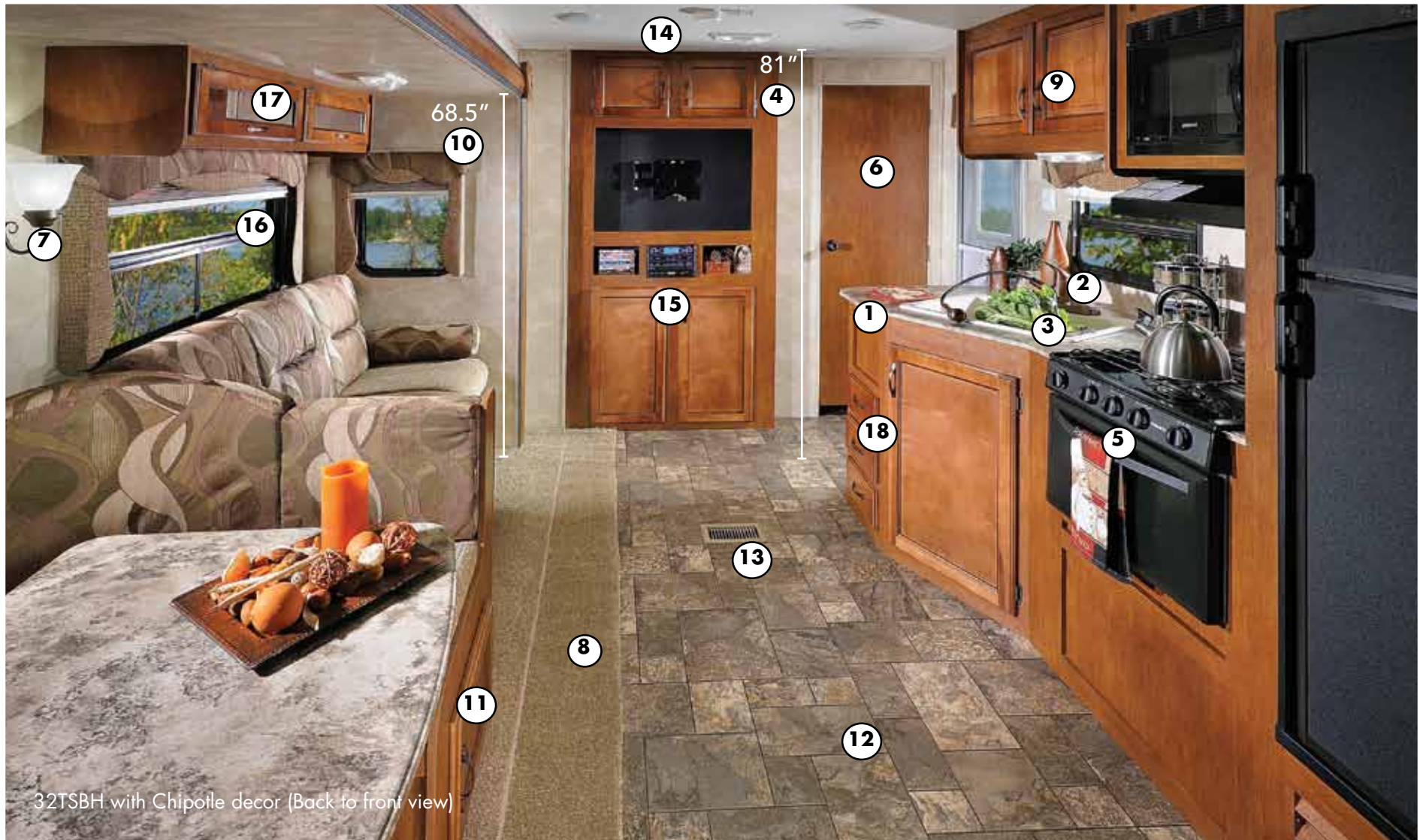
J. Detachable power cord with EZ pull handle and power indicator light.

K. Heated and enclosed underbelly.

L. Patio electric awning.

**AND MUCH, MUCH MORE, SEE PAGE 8 FOR A COMPLETE LISTING!**

# INTERIOR FEATURES



32TSBH with Chipotle decor (Back to front view)

- |  |   |   |
|--|---|---|
| 1. Thermal-foil countertops (not t-mold edge)  | 7. Deluxe reading lights                    | 13. Floor ducted heat                               |
| 2. Pull-out sprayer faucet   | 8. Residential style carpet                 | 14. Roof ducted A/C                                 |
| 3. Stonecast sink with 60/40 basin that is thermal resistant To 450 degrees fahrenheit | 9. Solid cognac maple raised panel doors    | 15. AM/FM, CD/DVD player with iPod® docking port    |
| 4. 81" Interior height   | 10. 68.5" Slide room height                 | 16. Night shades in living area                     |
| 5. Three burner range with oven  | 11. Large storage area at the dinette base  | 17. Overhead storage with gas strut assisted doors  |
| 6. Solid wood bedroom doors  | 12. Tile look linoleum with 3 year warranty | 18. Full extension ball bearing metal drawer guides |

# CONSTRUCTION AND STANDARD EXTERIOR FEATURES



Certified Green  
Builder by TR  
Arnold and  
Associates.



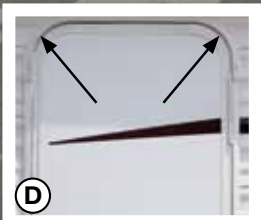
**A**  
New Fiberglass Radius Front End,  
(NOT a Metal Imitation)



**B**  
Exterior Pass Thru Storage



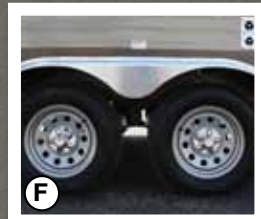
**C**  
Swing Arm Grab Handle at  
Main Entry



**D**  
Smooth Fiberglass Radius  
Entry Door



**E**  
Four (4) Stabilizer Jacks



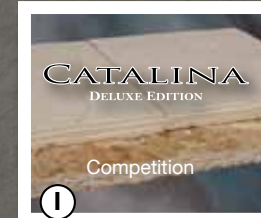
**F**  
Radial Tires, Polished Aluminum  
Fender Skirts and E-Coat Rims



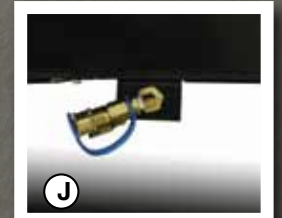
**G**  
Superlube™ Axles for Fast  
and Easy Lubrication



**H**  
G55 Rated Tinted Black Framed  
Windows with Safety Glass



**I**  
5/8" Tongue in Groove Plywood  
Floor Decking-NOT OSB



**J**  
LP quick connect

## STANDARD FEATURES

- Cambered structural steel I-Beam frame (With full width out riggers)
- 3/8" Fully decked walk-on roof
- 2" X 3" longitudinal floor joists on approximately 12" Centers
- Full extension ball bearing drawer guides
- Residential in-floor ducted heat
- 81" Living room ceiling height
- One-piece, seamless, rubber roof material with 12 year warranty
- Easy-Trac electric slide out(s)
- Wall studs on 16" centers
- 1/2" Plywood dinette, bed and bunk platforms
- Roof rafters, constructed of residential-style Tapered 5" trusses
- 5/8" Tongue & groove plywood floor decking
- R-7 fiberglass insulation in sidewall, roof & floor
- .024" Aluminum exterior skin with .030 skirt metal
- Tile look linoleum flooring

## STANDARD HEAT, POWER AND WATER EQUIPMENT

- Roto-cast holding tanks
- 30K BTU auto-ignition furnace with Wall thermostat
- 110V G.F.C.I. protected exterior receptacle
- 30-Amp electrical service w/deluxe 110v 45-amp power converter
- 12V demand water pump
- Systems monitor panel
- Hook-up for city water
- Double 30-lb. propane gas bottles w/ regulator

## STANDARD BATHROOM EQUIPMENT

- Skylight above bath and shower
- Shower curtain with curved shower track,
- Neo-angle shower with glass doors - 25RKS, 27FBCK, 29RKS, 30RLS, 36QBDS, 37DQBS
- Towel ring (2) & toilet paper holder
- Marine toilet with foot flush
- Large sink in bathroom
- Medicine cabinet w/ mirror
- Bathroom exhaust fan

## STANDARD KITCHEN EQUIPMENT

- Single piece countertop with seamless edge
- Stonecast residential style sink with extra deep 60/40 double bowl and single lever pull out sprayer faucet
- Gas electric double door refer travel trailers, 18 cubic foot residential refer with ice maker on destination trailers
- 3-Burner range w/ 9,000 BTU superburner™
- Range hood w/light and exhaust fan
- Access doors to the dinette booth
- Glued & screwed cabinet construction
- Easy-view extra large picture window at dinette
- Large pedestal dinette table
- Large u-dinette - some models
- Silverware drawer

## STANDARD BEDROOM EQUIPMENT

- Premium mattress
- Under-bed storage, bed lifts easily on 2 gas struts
- Deluxe window treatments
- Headboard
- 2 Shirt wardrobes
- 2 Night stands

## STANDARD EXTERIOR EQUIPMENT

- Dark tinted (G55) black framed windows w/safety glass
- Swing arm entry assist handle at main entry
- Radius entry steps
- Superlube™ easy maintenance axles
- Silver e-coat wheels
- Painted bumper w/drain hose carrier and end caps
- Radius-cornered fiberglass entrance door
- Painted bottom radius skirting
- Amber patio light w/inside switch
- Baggage doors are lockable and radius-cornered
- grab handle at second entry (per floorplan)
- Rain guttering, molded w/drip spouts
- Easy-connect exterior LP port - easy access for exterior LP grill or appliance hook-up (all models)
- Polished aluminum fender skirts
- Self adjusting brakes





## STANDARD INTERIOR EQUIPMENT

- Cognac maple cabinets w/ black accent trim
- Jack knife convertible sofa with bolster cushions
- Residential furniture
- Crank-up digital tv antenna with signal booster
- Cable hook-up with RG-6 coax cabling
- Marine grade table leg and pedestal base
- Valance & lambrequins window treatment
- Large dinette tabletop
- Night shades in living area

## STANDARD SAFETY EQUIPMENT

- Propane alarm
- Breakaway switch
- G55 rated safety glass windows
- Dead-bolt lock on entrance door
- Dual hitch safety chains
- Smoke alarm
- Multiple egress windows
- Fire extinguisher
- Carbon monoxide alarm
- TRA certified green

## CUSTOMER VALUE PACKAGE (MANDATORY OPTION)

- 13.5K BTU ducted A/C
- Heated-enclosed underbelly
- Double door refrigerator
- Microwave oven
- Multi-media premium sound system AM/FM/CD/DVD player, antenna and iPod® input jack, cable interior/exterior hook-ups
- A&E™ patio awning
- Evencool™ ducted central A/C with wall thermostat & louvered-directional ceiling vents
- Water heater by-pass winterization kit

## PLUS PACKAGE

- 30 Lb. propane gas bottles (2) w/ABS cover
- Outside shower
- Raised panel kitchen overhead doors
- 6-Gal. Electronic ignition (DSI) gas/electric water heater

## COMFORT PACKAGE

- ABS shower surround
- Gas oven
- Sink covers/cutting boards combination (2)
- Stabilizer jacks
- Black tank flush
- Mounted telescoping tv swing arm bracket
- Detachable power cord with EZ pull handle and power indicating light

## POWER PACKAGE

- Power electric awning
- Power tongue jack

## ADDITIONAL OPTIONS

- Exterior camper kitchen - (std. 27FBCK, 32TSBH), (opt. 30BHS, 32BHDS)
- Free standing dinette - (per floorplan)
- Front diamond plate (mandatory on travel trailers)
- Spare tire and tire carrier w/vinyl tire cover
- Csa standards
- Hide-a-bed sofa (per floorplan)
- Outside marine grade speakers
- 15K BTU A/C
- 50 Amp service w/ second A/C (36QBDS, 37DQBS)
- Bar stools (29DDS, 36QBDS, 37DQBS)

### DECOR OPTIONS

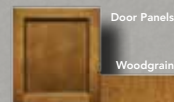
BAZINGA STONE



MAHKI



CHIPOTLE



Door Panels

Woodgrain

COGNAC MAPLE



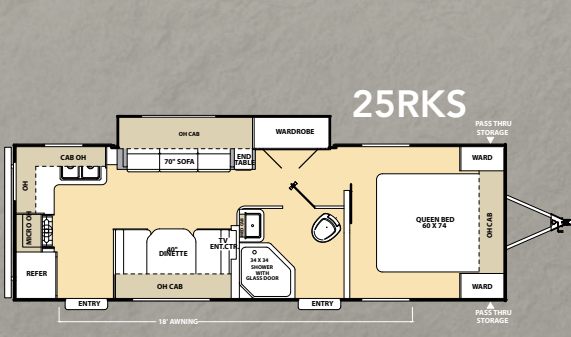
Bedroom Feature Fabric

Bedroom Accent Fabric

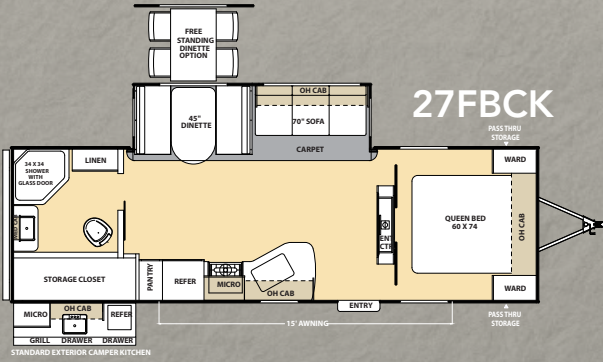


Wall Panel

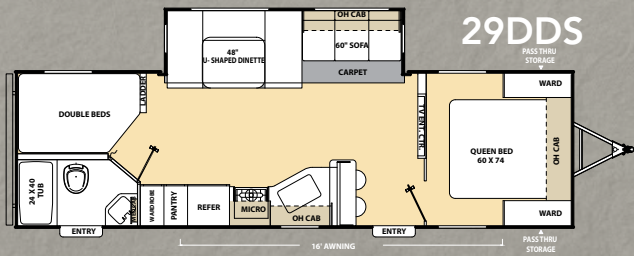
Countertop



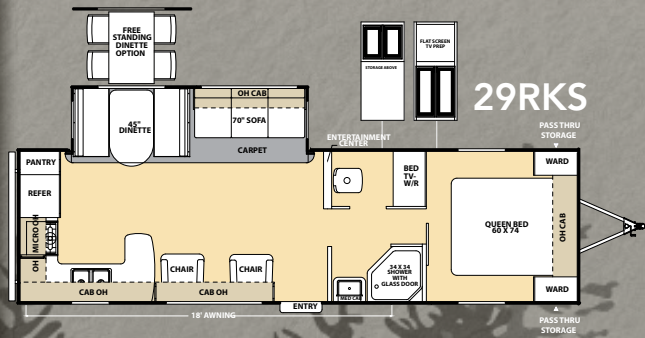
25RKS



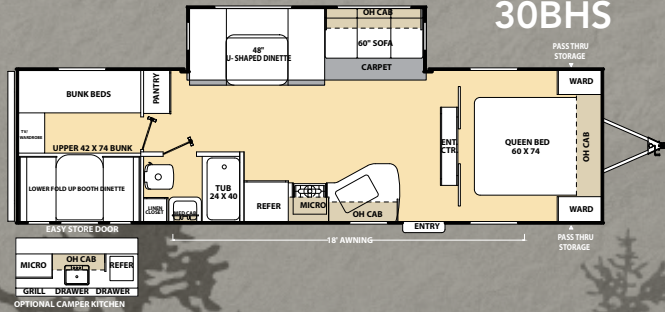
27FBCK



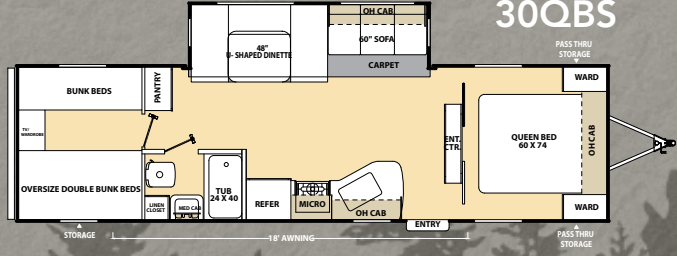
29DDS



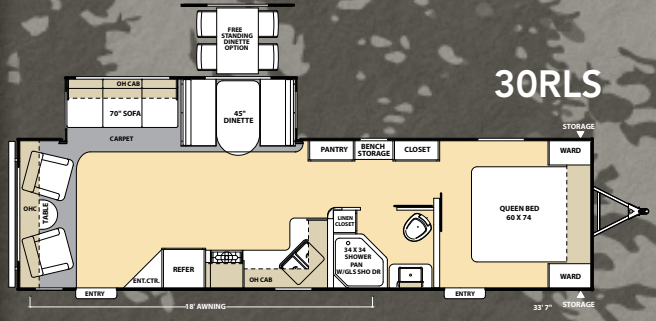
29RKS



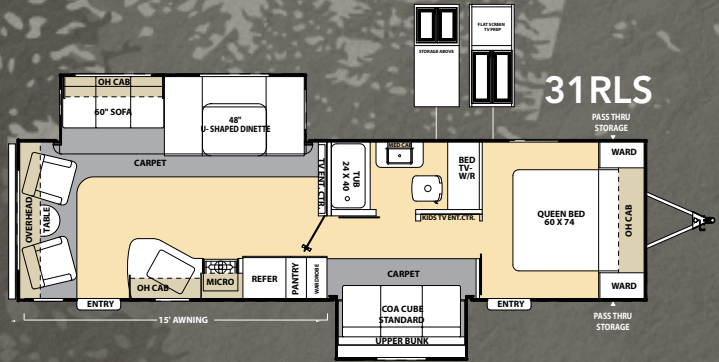
30BHS



30QBS



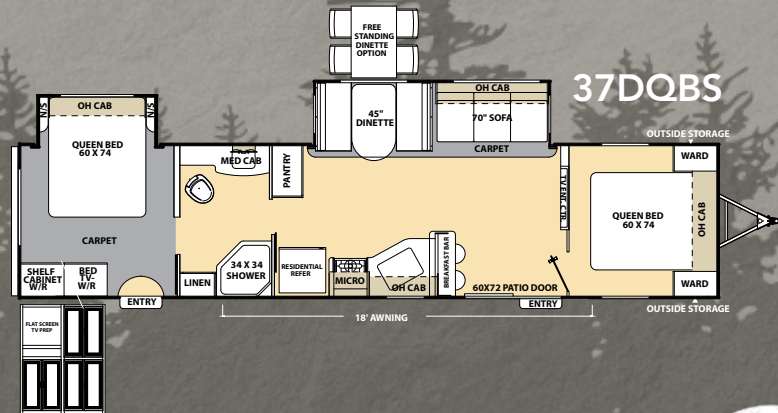
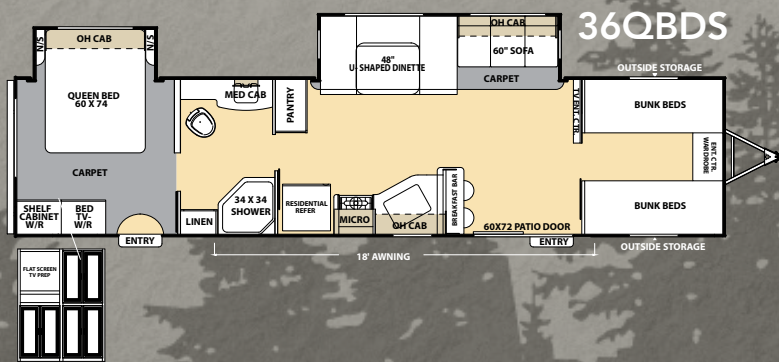
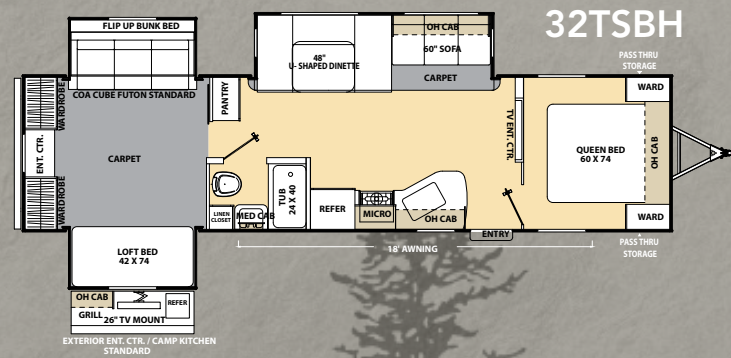
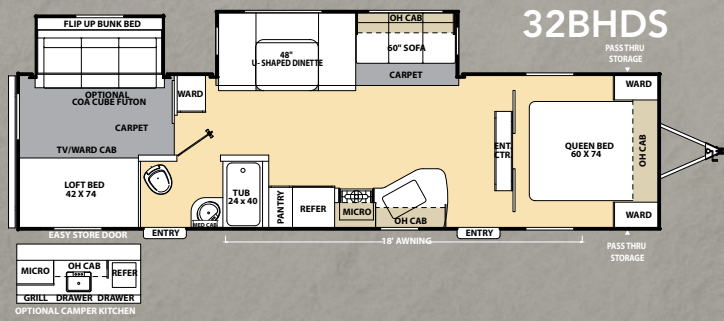
30RLS



31RLS



**Coachmen**  
Leader to the Great Outdoors.



## SPECIFICATIONS

MODEL	25RKS	27FBCK	29DDS	29RKS	30BHS	30QBS	30RLS	31RLS	32BHDS	32TSBH	36QBDS	37DQBS
Base Weight	5,360	6,366	6,345	6,559	6,760	6,793	6,800	7,540	7,643	8,490	8,100	8,200
Carrying Capacity	2,140	1,334	1,355	2,641	2,740	2,707	2,700	2,301	2,257	2,410	2,900	2,800
GVWR	7,500	7,700	7,700	9,200	9,500	9,500	9,500	9,900	9,900	10,900	11,000	11,000
Hitch Weight	630	740	806	740	810	947	830	915	1,065	990	1,150	1,175
Exterior Height (Includes A/C)	10' 7"	11' 1"	11' 1"	11' 1"	11' 1"	11' 1"	11' 1"	11' 1"	11' 1"	11' 1"	11' 1"	11' 1"
Fresh Water Capacity (gal.)	46	46	46	46	46	46	46	46	46	46	46	46
Grey Water Capacity (gal.)	40	40	40	70	40 **	40	40	40	40 **	40	80	80
Waste Water Capacity (gal.)	30	30	30	30	30	30	30	30	40	30	40	40
Awning Length	18'	15'	18"	18'	18'	18'	18"	15'	18'	15'	18'	18'
Tire Size	14"	15"	15"	15"	15"	15"	15"	15"	15"	15"	15"	15"
Exterior Length	28' 4"	30' 3"	31' 7"	32' 7"	34'	34'	33' 11"	34' 5"	35' 10"	35' 9"	38' 11"	39' 5"
Exterior Width	96"	96"	96"	96"	96"	96"	96"	96"	96"	96"	96"	96"
Interior Height (Coach)	81"	81"	81"	81"	81"	81"	81"	81"	81"	81"	81"	81"
Axles	3500 lbs.	3500 lbs.	3500 lbs.	5200 lbs.	5200 lbs.	5200 lbs.	5200 lbs.	4400 lbs.	4400 lbs.	5200 lbs.	5200 lbs.	5200 lbs.





# FREE ONE YEAR MEMBERSHIP

## Big benefits for new owners

Coachmen is proud to sponsor the largest manufacturer sponsored camping club in North America ... Coachmen Owners' Association (COA). COA provides you a world of ways to enjoy your RV. This is FUN ON OVERDRIVE and provides: Free Trip Routing, Exciting Tours & Rallies, Free Campground Directory, Local/State Club Activities, Easy RVing Magazine Free, Theme Park Discounts, Fuel Discounts, Free onbigplanet® Memberships with discounts at 180,000 merchants and Much More! Every new Coachmen RV buyer is eligible for a 1 Year **FREE** membership in the Coachmen Owners' Association. It all adds up to an easy ownership experience!

## Travel Easy™ Roadside Assistance

RVing is easier with Coachmen's Travel Easy™ Roadside Assistance provided **FREE** the first year of ownership to those who purchase a New Coachmen RV. Administered by Coach-Net, this service provides you with 24/7 operational, technical and emergency road service coverage. Also included is towing, fuel delivery, jump starts, lockout service, tire changes, mobile mechanic and unlimited technical assistance. Anywhere. Anytime. Travel Easy™ is the security of knowing that help is an easy phone call away.



All information contained in this brochure is believed to be accurate at the time of publication. However, during the model year, it may be necessary to make revisions and Coachmen reserves the right to make all such changes without notice, including prices, colors, materials, equipment and specifications as well as the addition of new models and the discontinuance of models shown in this brochure. Therefore, please consult with your Coachmen dealer and confirm the existence of any materials, design or specifications that are material to your purchase decision.

To learn more about Coachmen RV and our products and see how Coachmen is leading the great outdoors, visit [www.coachmenrv.com](http://www.coachmenrv.com)



# Coachmen

Leader to the Great Outdoors.

Coachmen RV  
Catalina Division  
423 N. Main St./P.O. Box 30  
Middlebury, IN 46540



**Learn More**  
Scan this barcode using a QR Reader on your smart phone to learn more about Forest River.



A Berkshire Hathaway company.

**Forest River, Inc. encourages our customers to purchase their Forest River products from a local dealership whenever possible for the following reasons:**

- 1) Forest River, Inc. dealers are independently owned and operated businesses so priority service and scheduling is at their discretion and is often provided to customers that purchased their unit at that dealership.
- 2) Purchasing locally allows customers to establish meaningful relationships with a dealer, enhancing the RV experience through assistance with product questions, user tips or RV regulations for your state or country, and much more!
- 3) Canadian customers must meet requirements to bring an RV purchased out of the country to their home. These requirements may involve additional inspections and certifications, taxes and fees. Your local Canadian Dealer is a professional at meeting these requirements.
- 4) Scheduling timely warranty repairs and adjustments through a local dealership provides far greater flexibility and convenience to you, the customer!

It is the goal of Forest River, Inc. that all of our RV owners fully enjoy the RV experience and that customer satisfaction meets or exceeds their expectations!

### YOUR CATALINA DELUXE DEALER

Colton RV & Marine  
3122 Niagara Falls Blvd.  
North Tonawanda, NY 14120  
(716) 694-0188  
[www.ColtonRV.com](http://www.ColtonRV.com)

Colton RV  
489 Bushkill Plaza LN #9665  
Wind Gap, PA 18091  
(610) 863-5239  
[www.ColtonRV.com](http://www.ColtonRV.com)

