

# SPORTSTER

TRAVEL TRAILER & FIFTH WHEEL TOY HAULERS





# SPORTSTER

You'll find no wasted space in our Sportster Toy Haulers! Everything you need for fun and pleasure are neatly built into these exceptionally livable floorplans. Whether your towing needs require a travel trailer or fifth wheel, a wide variety of floorplans, standard features, and optional enhancements are available to make a perfect fit for your individual needs.

To fuel the crew, the kitchen is well equipped to prepare a feast with a large 8 cubic foot refrigerator, drop in cooktop with glass cover, microwave with turntable, and deep under-mount sink with high-rise faucet.



Sleeping quarters are tucked away over the cargo area with an ingenious loft bed that includes two storage cubbies. Below, the optional sliding glass patio door separates the garage from the living area.





373TH12 | French Roast décor



373TH12 | French Roast décor

After a hard day's ride, the flush floor master bedroom offers comfort and rest, and is furnished with a queen size bed, 4-drawer dresser, and two mirrored wardrobe closets with additional storage overhead.



373TH12 | French Roast décor

Clean up from the ride in this spacious walk-through bathroom that features a home-like radius shower with glass enclosure, linen closet, and large vanity.



# SPORTSTER



300THR | French Roast décor



300THR | French Roast décor

**Play hard and live large with Sportster Travel Trailer and Fifth Wheel Toy Haulers. Bring along all the toys and still have ample, comfortable living quarters for the family. Meticulous design and innovative features give you the best of both worlds.**

After a hard day of play, chill out with this multi-media entertainment center. Rich cabinetry houses an optional 39-inch TV with stereo, DVD player, Bluetooth technology, and NFC connectivity along with dual 12 volt USB ports for charging your mobile devices.

Even the big guy will find plenty of head and elbow room in this large shower, with an easy clean surround and molded multi-shelf soap/shampoo holder.



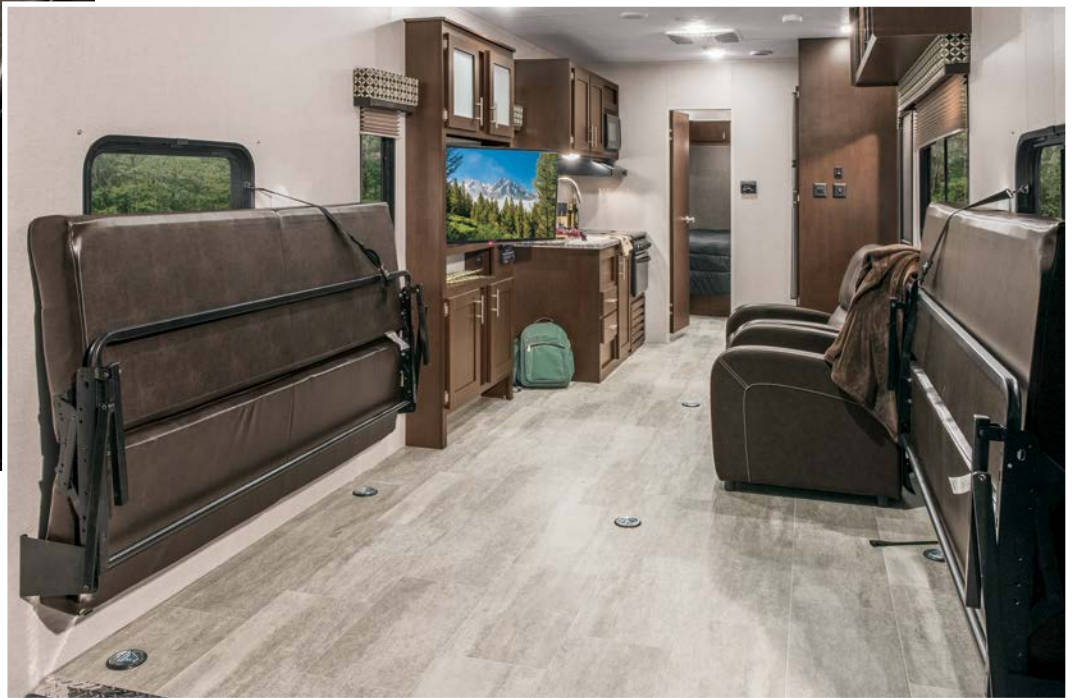




300THR | French Roast décor



332BHLE | French Roast décor

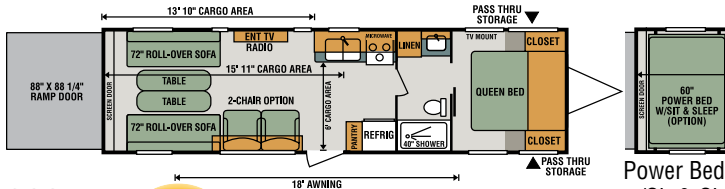


332BHLE | French Roast décor



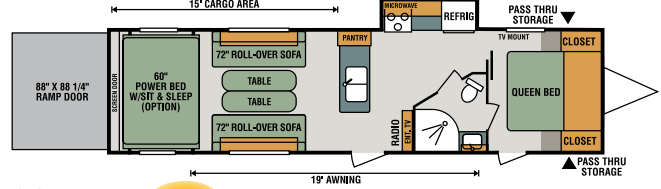
In transit, the rollover sofas fold up and out of the way for hauling your favorite toys. Upon arrival, unload and flip the sofas down to create comfortable lounges and dining space or fold down flat for sleeping.

# TRAVEL TRAILER TOY HAULERS

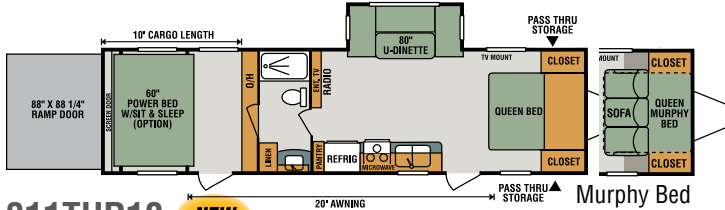


**300THR** **NEW**

Power Bed w/Sit & Sleep Option

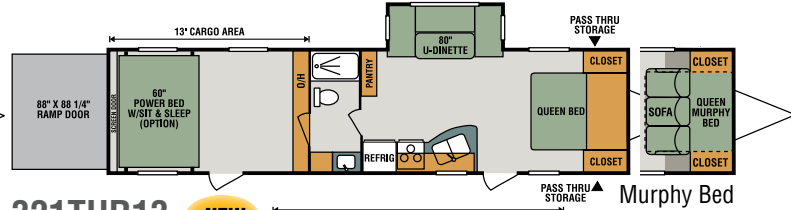


**301THR** **NEW**



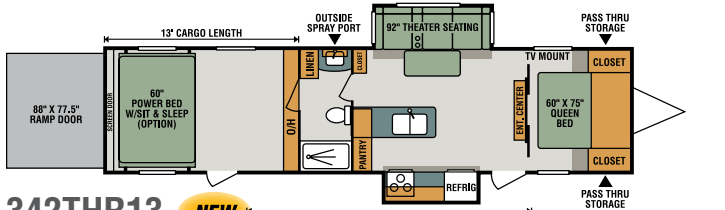
**311THR10** **NEW**

Murphy Bed Option (patent pending)



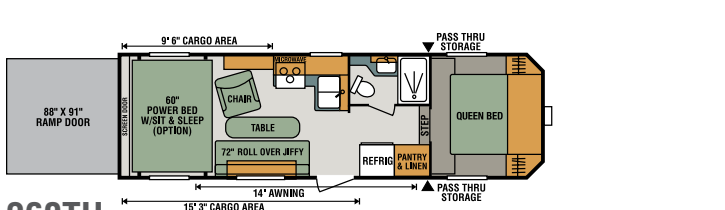
**321THR13** **NEW**

Murphy Bed Option (patent pending)

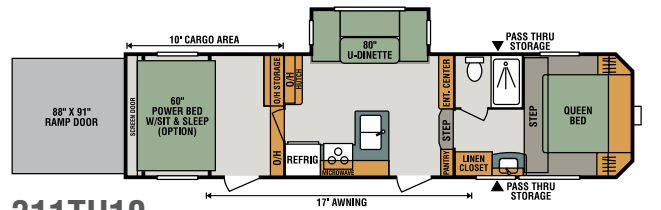


**342THR13** **NEW**

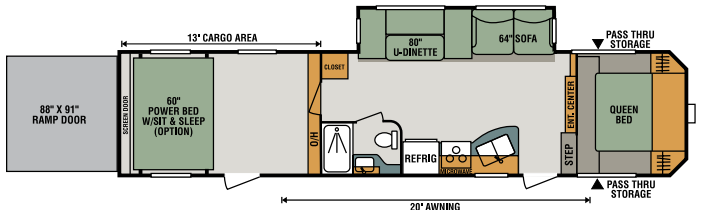
# FIFTH WHEEL TOY HAULERS



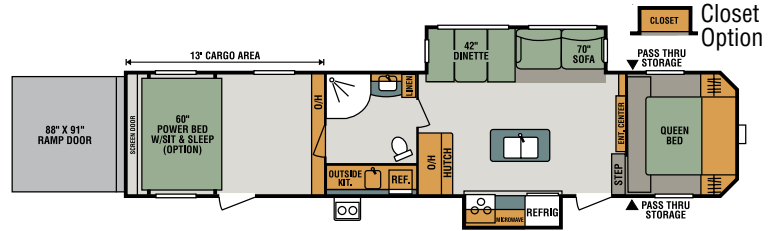
**260TH**



**311TH10**

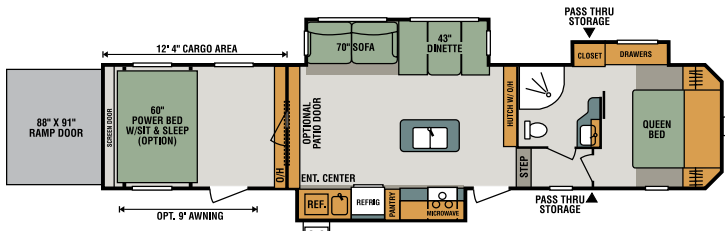


**331TH13** **NEW**

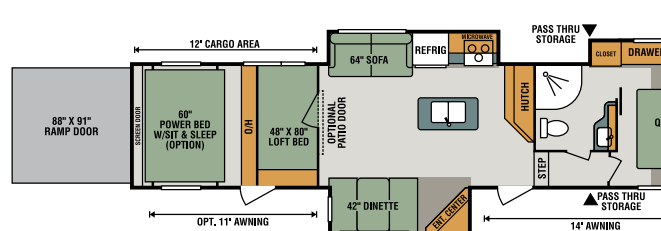


**352TH13** **NEW**

Closet Option



**363TH12** **NEW**



**373TH12** **NEW**



## Standards

- K-Z Exclusive Tough Shield .030 Exterior Metal (TTs)
- 102" Wide Body
- 3/8" Fully Walk-On Roof Decking
- 1-Piece Seamless Roof w/ SuperFlex® Roofing Material
- Radius Truss Rafter
- 90" Interior Wall Height (TTs)
- Awning w/Drip Rail & Spouts
- Cargo Tie-Down Rings
- Tuff Ply® in Enclosed Cargo Areas
- (2) 20# LP Bottles w/Cover TT
- (2) 30# LP Bottles w/Cover FW
- 30 AMP Service
- 13,500 BTU A/C
- (2) or (4) Stabilizer Jacks (F/P specific)
- Enclosed Pin Box on FWs
- Tinted Safety Glass Windows
- Self-Adjust Brakes
- Cable Hookup
- Radius Entry Door
- Extra-Large, Smooth, Screwless Baggage Doors
- Outside Shower (F/P specific)
- LED Light in Pass-Thru Storage
- Winter Bypass Kit
- Linoleum Throughout
- Acrylic Sink w/High-Rise Faucet
- 3-Burner Cooktop
- Range Hood w/12V Light & Exhaust Fan
- Oven
- Microwave w/Turntable
- Large Overhead Cabinets
- Roller Ball Bearing Drawer Guides
- Super-Sized Panoramic Slideroom Window
- LED Interior Lighting
- Monitor Panel
- Digital TV Antenna w/Booster
- Flush-Floor Bedroom (FWs)
- Built-In Medicine Cabinet w/Mirror in Bathroom

- Queen Mattress
- Shower Surround
- Power Vent in Bathroom

## Options

- Color-Infused Titanium Exterior Fiberglass (TTs)(required on FWs)
- 15,000 BTU A/C IPO 13,500 BTU A/C
- 50 AMP Service w/2nd A/C Prep
- 2nd A/C (13,500 BTU)
- 39" LED TV (N/A 321THR13)
- 32" LED TV (321THR13)
- Bedroom LED TV w/Inside/Outside Bracket
- Radiant Technology Package (foil in floor/roof/front/rear)
- F/S Dinette Table & Chairs IPO Dinette
- Theater Seating IPO Dinette (311THR, 321THR, 311TH)
- 10 CU FT 12V Residential Refrigerator IPO 8 CU FT Gas/Electric Refrigerator
- Theater Seating IPO Jackknife (331TH, 352TH, 363TH)
- Wardrobe Slide (352TH13)
- Front & Rear Electric Stabilizer Jacks (TTs)
- Electric Rear Stabilizer Jacks (FWs)
- Fireplace (311TH10, 331TH13, 352TH13, 373TH12)
- Central Vacuum (FWs only, N/A 260TH)
- 2nd Power Awning w/LED (352TH, 363TH, 373TH)
- MaxxAir® Vent Fan (cargo and/or living room and/or bath)
- Roof Ladder
- Wireless Backup Camera System – Observation
- Patio Door (363TH12, 373TH12)
- (2) Recliner Chairs (300THR)
- Ramp Extension (N/A w/party patio package)
- Murphy Bed (patent pending) (311THR10, 321THR13)

- Sit-n-Sleep w/Power Bed
- Party Patio Package (railing only)
- Motion Security Sensor for Smart Arm Awning
- Wind Sensor for Smart Arm Awning
- Generator Prep w/30 GAL Fuel Tank & Pump Station
- 4.0 KW Generator (requires generator prep & 30 amp)
- 5.5 KW Generator (requires generator prep & 50 amp)

## K-Z Advantage Package (mandatory option)

### Exterior

- 5/8" Tongue & Groove Plywood Floor
- Power Awning w/LED Light Strip
- Key-Alike Program for Baggage/Entry Doors
- Friction Hinge Entry Door
- Large Folding Grab Handle
- Black Tank Flush
- Power Front Jacks
- Spare Tire & Carrier
- Exterior Speakers
- Alumitread® Entry Steps
- Amber Step Light
- Solar Prep
- Backup Camera Prep
- EquaFlex® Suspension
- Battery Disconnect
- Toylok®
- Climate Package (heated, enclosed & insulated underbelly)
- Nitrogen-Filled Tires

### Interior

- Bed Storage System
- Plywood Bed Base w/Gas Struts
- Seamless Countertop w/Under-Mount Kitchen Sink
- Sink Cover
- Kitchen Skylight
- Storage Bins in Dinette
- Blue LED Strip Light above Main

### LR Slide

- Jackknife Sofa w/Center Console & Bolster Arms
- (2) 6 ½" Interior Speakers
- Multi-Media Stereo w/DVD, Bluetooth & NFC Wireless Connectivity
- 12V Dual USB Ports
- Foot-Flush Toilet
- Pleated Shades
- (2) Motion Sensor LED Lights
- Drop-In Cooktop w/Glass Cover
- Pillowtop Mattress
- Retractable Screen Wall
- Diamond Plate Threshold

## K-Z Convenience Package (mandatory)

### Exterior

- 102" Wide Exterior
- Smart Arm Awning w/Exterior Controls
- Aluminum Wheels (TTs)
- 16" Tires w/Aluminum Wheels (FWs)
- 12" Diamond Plate on Sidewalls of Enclosed Garages
- Magnetic Catches for Baggage Doors
- Omnidirectional HDTV Antenna
- LED lights in Exterior Speakers
- Dual Rear Ramp Lights

### Interior

- Armstrong® ToughGuard® Linoleum
- 8 CU FT Gas/Electric Refrigerator
- Stainless Steel Residential Kitchen Faucet w/Pulldown Sprayer
- Surfex® Wood Step in FW Hallway
- Interior Control Switches on OH End Cabinet
- Dark Accent Trim on Corners/Entry Doors
- Soft Snap Curtain in Garage Area
- Woodgrain Door to Garage Area
- Full-Width OH in Enclosed Garage Area

Toy Haulers	300THR	301THR	311THR10	321THR13	342THR13	260TH	311TH10	331TH13	352TH13	363TH12	373TH12
UVW (Unloaded Vehicle Weight)*	6,890	7,560	7,770	7,880	9,020	7,165	8,800	9,245	10,890	11,310	11,200
Dry Hitch Weight*	1,160	1,230	1,200	1,140	1,540	1,310	1,360	2,260	2,070	2,040	2,075
Dry Axle Weight*	5,730	6,330	6,570	6,740	7,480	5,855	7,440	6,985	8,820	9,270	9,125
NCC (Net Carrying Capacity)	3,110	2,440	2,240	2,120	2,680	1,635	2,200	2,750	2,185	3,930	4,040
GVWR	10,000	10,000	10,000	10,000	11,700	8,800	11,000	11,995	15,240	15,240	15,240
Interior Height	90"	90"	90"	90"	90"	91"	92"	92"	92"	92"	92"
Exterior Height	12' 3"	12' 3"	12' 3"	12' 3"	12' 3"	12' 2"	12' 3"	12' 5"	12' 7"	12' 7"	13' 3"
Exterior Width	102"	102"	102"	102"	102"	102"	102"	102"	102"	102"	102"
Exterior Length	33' 2"	34' 11"	35' 9"	37' 1"	38' 3"	29' 8"	34' 2"	38' 1"	41' 7"	41' 7"	41' 0"
Refrigerator (cu. feet)	8	8	8	8	8	8	8	8	8	8	8
Water Heater Cap. (gal. G/E w/DSI)	6	6	6	6	6	6	6	6	6	6	6
Fresh Water Cap. (gal.)	75	75	75	75	75	75	75	75	75	75	75
Waste Water Cap. (gal.)	32	32	32	32	32	32	57	32	32	57	57
Gray Water Cap. (gal.)	32	32	32	32	32	32	57	32	64	57	57
LP Gas Cap. (lbs.)	40	40	40	40	40	60	60	60	60	60	60
Furnace BTUs (1,000s)	25	25	25	25	25	25	30	25	30	30	30
Tire Size	15"	15"	15"	15"	16"	16"	16"	16"	16"	16"	16"
Awning	18'	19'	20'	19'	19'	14'	17'	20'	13'***	18'***	14'****

\*This weight reflects the rolling average unit weight for each model. Your trailer weight will vary according to optional equipment.

\*\*352TH13 also available with optional 18' awning. \*\*\*363TH12 also available with optional 9' awning. \*\*\*\*373TH12 also available with optional 11' awning.

# INTERIOR & EXTERIOR FEATURES



300THR

Shown with optional party patio.



373TH12



373TH12



French Roast



Linen

Enjoy the convenience and comfort of the optional sit-n-sleep with power bed.



Equaflex® suspension and exterior speakers are standard features.

The optional roof ladder folds flat against the sidewall for easy storage.



**True 2-Year Limited Warranty!** K-Z's 24-month hitch-to-bumper limited warranty umbrella is the best 2-year warranty in the business, covering more than 1,500 operations codes for a full two years, and protects your investment while you enjoy your new RV.



Dealer:  
Colton RV  
North Tonawanda, NY 14120  
(716) 694-0188  
(800) 628-4889  
[www.ColtonRV.com](http://www.ColtonRV.com)

Colton RV  
Orchard Park, NY 14127  
(716) 957-3250  
(800) 628-4889  
[www.ColtonRV.com](http://www.ColtonRV.com)



985 N 900 W • Shippshewana, IN 46565  
E-mail [kz@kz-rv.com](mailto:kz@kz-rv.com) • [www.kz-rv.com](http://www.kz-rv.com)

*Due to continual research and advances, manufacturer reserves the right to change specifications, design, price and equipment without notice, and assumes no responsibility for any error in this literature. Some items shown are not included as standard or optional equipment. ©2017KZ | 11/09/17 | 60M*