

# CHAPARRAL

ENGINEERED TO GO WHERE YOU WANT, WHEN YOU WANT.



Coachmen | Chaparral Fifth Wheels



# CHAPARRAL

ENGINEERED TO GO WHERE YOU WANT, WHEN YOU WANT.

## ***Our 'Lite' gives nothing away.***

### **You can tow fifth wheel luxury and space with a half-ton truck!**

The all-new Chaparral Lite is engineered to be the lightest luxury fifth wheel on the market. Designed for the towing capacity of a half-ton pickup truck, the Chaparral Lite offers spacious interiors with quality features and appointments everywhere you look.

Our state of the art manufacturing process utilizes lightweight lamination in floor and walls. The result: we give the half-ton truck customer a lot more coach at the same "lite" weight of our competitors. Everything you expect with a high-end fifth wheel is still there.



Model 280RLS shown in Fall River Decor







Model 325MKS shown in Godiva Decor



Oversized glass shower is standard in 325MKS



Elegant dresser is standard in the 325MKS



Model 330FBH front bunk shown in Cappuccino Decor



Model 325MKS shown in Godiva Decor

#### CHAPARRAL DECORS



Godiva



Fall River



Cappuccino

## Full on Comfort with the Mid Profile Chaparral!

With full-sized slideouts and more, the all-new Chaparral Mid Profile won't leave anyone feeling cramped or second best. Just consider features like the Jensen AM/FM/CD/DVD player and marine grade exterior speakers, or the Magic Night Sleep System's Sofa, or our residential full-sized Serta® queen beds (60" x 80") mattress,

bigger 10 gallon water heater, and available Corian solid surface countertops, or our bigger Pack Max Storage system and convenient universal docking station — all new and designed to make sure your RV time is quality time.



Model 286RKS shown in Godiva



New magic night sleep system sofa for a better night sleep without the hassle of a leaky air mattress.



286RKS Living area shown in Godiva Decor

# FEATURES



## FREEDOM TO EXPLORE! NO HOOK-UPS!

The package includes both lighting and stereo powered by your 12-volt battery, plus built-in space that can be used for a generator. Then there is the fully enclosed underbelly that also seals out dirt and pests.



A new hitch cover adds aerodynamic style, incorporating a built-in LED light, helping you connect when light is hard to come by.



A universal docking station conveniently houses, in one location, items such as city water hookup, fresh water fill, cable tv hook-up and black tank flush.



Bus Style Slam Latch Baggage Doors.



Pack Max Storage – Larger, insulated pass-through storage doors come equipped with slam latch baggage doors.



12 volt battery disconnect quickly and conveniently provides a quick shutdown.



Most of our Fifth Wheels can be towed with short bed trucks.



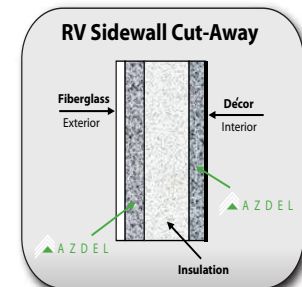
Laminated Aluminum Framed Floor - No Wood Studs in our Floor like our Competitors. Lighter and Stronger!



Astro-Foil Insulation - Insulates under our Bed/Bath decks and under our slide-out floors.



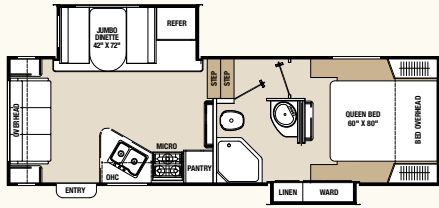
Our all new outside kitchen featuring a half-sized refrigerator, pull-out shelf with a Coleman® grill and plenty of cabinet space.



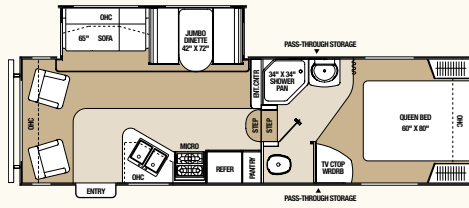
- 50% Lighter Than Wood
- NO Rot, Mold or Water Damage
- R-2 Thermal Insulation
- Odorless, NO Formaldehyde
- Sound and Energy Absorbing
- Impact and Puncture Resistant
- Made in U.S.A.



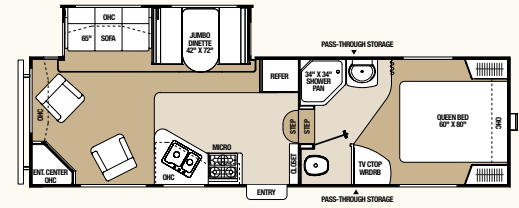
# LITE FLOORPLANS



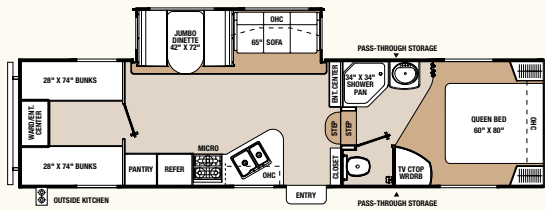
255RLS



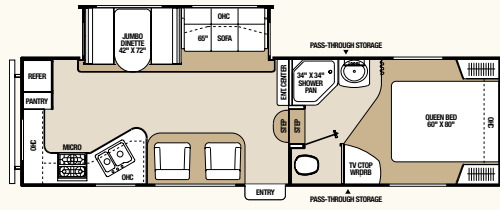
267RLS



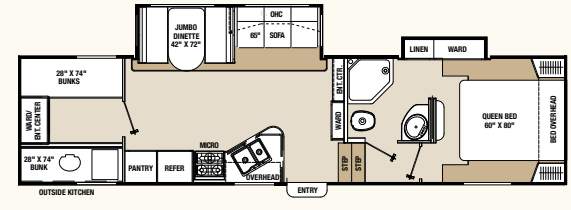
268RLE



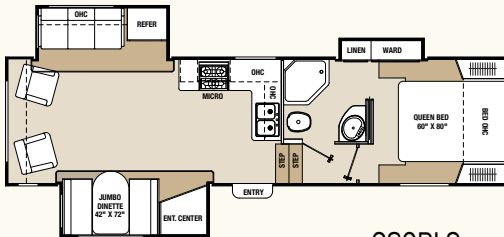
269BHS



270RKS



279BHS



280RLS

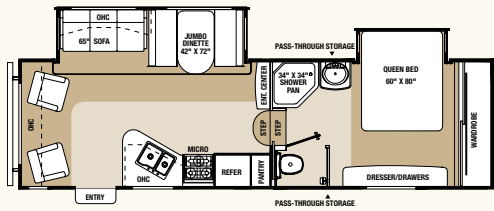


Want to dress your Chaparral up?  
Consider our partial premium paint option shown above.

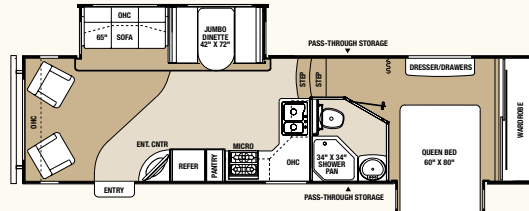
	255RLS	267RLS	268RLE	269BHS	270RKS	279BHS	280RLS
Base Weight	6,986	6,536	6,877	7,931	6,746	8,216	8,260
Carrying Capacity	2,340	2,562	2,349	3,269	2,399	2,770	2,681
Hitch Weight	1,300	1,098	1,226	1,680	1,146	1,890	1,610
Exterior Length	28' 5"	29' 2"	30' 7"	34' 1"	30' 3"	35' 10"	32' 8"
Exterior Height (Includes A/C)	11' 11"	11' 11"	11' 11"	11' 11"	11' 11"	11' 11"	12' 2"
Fresh Water Capacity (Gal.)	47	47	47	47	47	47	47
Waste Water Capacity (Gal.)	42	42	42	42	42	42	42
Gray Water Capacity (Gal.)	42	42	84	84	84	84	42



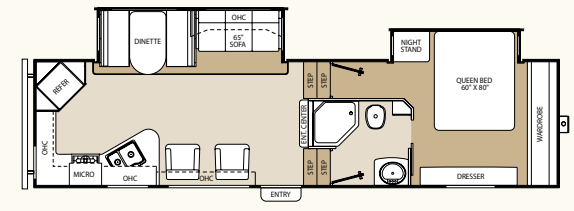
# MID PROFILE FLOORPLANS



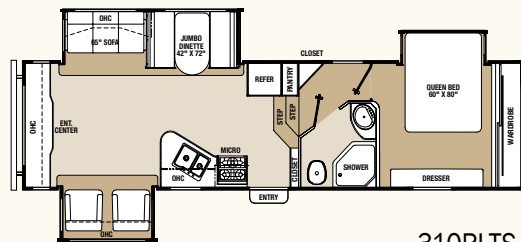
276RLDS



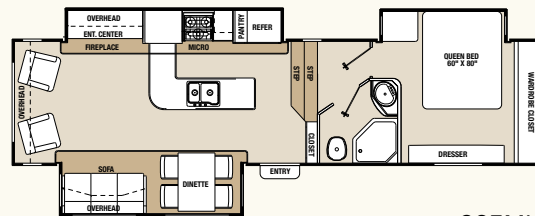
278RLDS



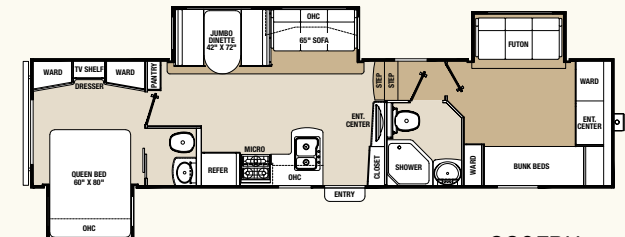
286RKS



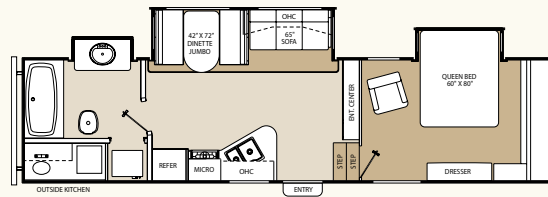
310RLTS



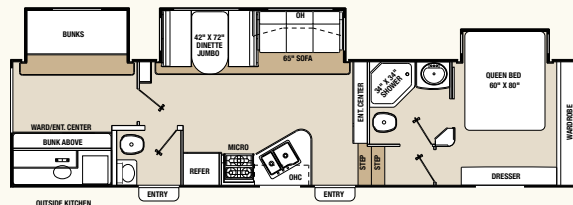
325MKS



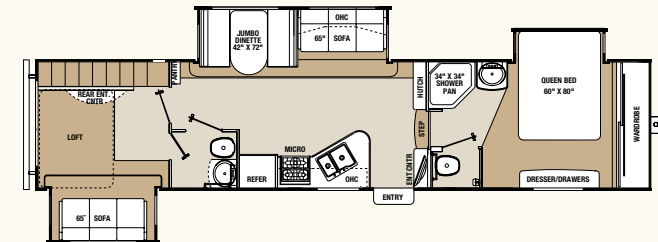
330FBH



335RBS



345BHS



355RLTS

	276RLDS	278RLDS	286RKS	310RLTS	325MKS	330FBH	335RBS	345BHS	355RLTS
Base Weight	7,913	8,086	8,905	9,484	9,900	9,457	9,270	10,440	10,465
Carrying Capacity	3,269	3,573	2,911	2,476	2,100	2,473	2,541	2,810	3,505
Hitch Weight	1,780	1,659	2,090	1,960	2,075	1,930	2,010	1,900	1,970
Exterior Length	30' 0"	32' 2"	34' 3"	33' 11"	35' 8"	37' 3"	35' 6"	37' 4"	38' 4"
Exterior Height (Includes A/C)	12' 6"	12' 6"	12' 2"	12' 0"	12' 6"	12' 6"	12' 4"	12' 6"	12' 6"
Fresh Water Capacity (Gal.)	60	60	60	60	60	60	60	60	60
Waste Water Capacity (Gal.)	45	45	45	45	75	75	45	75	90
Gray Water Capacity (Gal.)	45	90	90	90	75	75	90	75	90



Chaparral 345BHS Mid Profile includes a full bath and a half bath with an outside kitchen.

# CHAPARRAL



## All you need is a Half-Ton Truck...

A big change to the Chaparral Lite is the new aerodynamic fiberglass front cap and hitch placement. Coachmen TurnTec Engineering combines an aggressive frame and cap design to achieve the industry's best turning radius, so you can handle sharp campground turns and other tight spots - all with a half-ton truck!

**Quality lamination and insulation** — Our quality lamination process extends from the floor to the sidewalls. Also, the exterior underbelly is insulated so it is kept from extreme temperatures and seals out dirt and pests. Extra shine — put aluminum wheels with the Chaparral Lite's fresh new colors and you've got a fifth wheel that says "You're something special!"

### WALL CONSTRUCTION (R-11)

- 1 Gel-coated fiberglass exterior
- 2 AZDEL composite panels
- 3 Hi-density block foam insulation
- 4 Radius window corner blocks
- 5 2" welded aluminum sidewall studs
- 6 Fiberglass batten insulation
- 7 High-gloss front fiberglass cap
- 8 Metal backing strips

### ROOF CONSTRUCTION (R-13)

- 9 One-piece EPDM rubber roof with 12-year warranty
- 10 3/8" fully walkable roof decking
- 11 Fiberglass batten insulation
- 12 5" roof trusses
- 13 1/8" ceiling decking with vinyl protection

### FLOOR CONSTRUCTION (R-14)

- 14 Residential grade carpet with stain protection
- 15 Residential grade carpet padding
- 16 Residential grade linoleum
- 17 1/8" lauan wood backer
- 18 2nd 1/8" lauan wood backer
- 19 Hi-density block foam insulation
- 20 2" welded aluminum floor joists
- 21 1/8" lauan wood backer

22 Darco floor bond (main floor)

23 Polypropylene fully enclosed sub-floor

### TIRES AND CHASSIS

- 24 10" or 8" steel "powder coated" I-beam frame
- 25 15" or 16" radial tires
- 26 EZ Lube axles (Mid Only)

# STANDARDS & OPTIONS

INTERIOR			L	M	EXTERIOR/CONSTRUCTION			L	M		
Maple cabinets	S	S	Large drawers with steel ball bearing guides	S	S	Aluminum framed laminated sidewalls with Azdel Composite Panels	S	S	Freestanding dinette with 4 chairs	O	O
Mortise and tenon arched cabinet doors	S	S	Trash can storage area	S	S	Gel coated filon exterior walls	S	S	Comfort air ventilator fan	N/A	O
Smoked glass cabinet doors (select areas)	S	S	Large pantry	S	S	Pre-backed for aftermarket slide-out awnings	S	S	Ex-large 8 cubic foot double door refrigerator	N/A	O
Oil rubbed bronze hardware	S	S	<b>SLEEPING</b>	L	M	Aluminum framed laminated floor	S	S	Raised panel refrigerator door front	O	O
Congoleum® Designer Carefree Resilient sheet flooring (bath & kitchen)	S	S	60" x 80" residential Serta® queen bed	S	S	5" roof trusses with 3/8" fully walkable roof	S	S	Magic Night Sleep System Sofa	O	O
Residential carpet in living room & bedroom	S	S	Large storage area beneath bed	S	S	Rubber roof	S	S	La-Z-Boy® recliners in place of swivel rockers		
Jackknife sofa with storage	S	S	Cable & HD television ready	S	S	Dark tint safety glass windows	S	S	(276RLS, 278RLDS, 310RLTS, 280RLS, 286RKS, 325MK5)	N/A	O
2 – swivel rockers (select models)	S	S	Jackknife sofa with storage (355RLTS)	N/A	S	TurnTec fiberglass front cap	S	S	Electric ceiling fan	N/A	O
Jumbo booth dinette with pedestal table	S	S	Flat floor bedroom – bedroom slide-out models	N/A	S	30" wide entrance door	S	S	Electric fireplace		
Hard window valances with lambrequin legs	S	S	<b>BATH AND WATER</b>			Powder coated forged I-beam frame w/camber	S	S	(310RLTS, 325MK5, 280RLS, 345BHS)	N/A	O
Pleated night window shades	S	S	Porcelain toilet with foot pedal flush	S	S	Fully extended hitch pin	S	S	26" LCD HD television (278DS model only)	O	N/A
Soft valance with drapes window treatment	S	S	Powered bath vent	S	S	Easy opening triple entry step	S	S	32" LCD HD television (n/a in 278RLDS model)	N/A	O
AM/FM/CD/DVD player with MP3 hook-up	S	S	Hardwood medicine cabinet with mirror	S	S	Heavy-duty 5,200 lb. easy lube axles	S	S	Comfort air ventilator fan	N/A	O
Digital television antenna	S	S	Shower surround	S	S	Radial tires	S	S	26" LCD HD television-bunk room		
Cable TV hook-up	S	S	Skylight over the shower	S	S	Silver rally wheels (n/a on 355RLTS)	S	S	(330FBH, 345BHS and 355RLTS)	N/A	O
Slide-out room-6'1" interior height	S	S	Decorative glass shower door	S	S	Electric front jacks	S	S	Magic Night Sleep System Sofa –bedroom		
LP leak alarm	S	S	Toilet paper holder	S	S	Quick release extra long leg pins	S	S	(355RLTS only)	N/A	O
Fire extinguisher	S	S	Towel rack	S	S	Rear stabilizer jacks	S	S	Thermopane tinted safety glass windows	N/A	O
Smoke detector	S	S	6 gallon gas/electric hot water heater with DSI	S	N/A	Rear bumper with sewer hose storage	S	S	LED fiberglass hitch cover	O	O
CO detector	S	S	10 gallon gas/electric hot water heater with DSI	N/A	S	Universal docking station	S	S	Super duty 6,000 lb. easy lube axles		
<b>GALLEY</b>			On-demand water pump	S	S	Attic vent	N/A	S	(std. in 355RLTS)	N/A	O
Seamless laminate countertops	S	S	Water heater bypass valve	S	S	Patio awning	S	S	Equa-flex suspension	N/A	O
Stainless steel double bowl sink	S	S	Black tank flush	S	S	Pack Max Storage with slam latch baggage doors	S	S	15" aluminum wheels (n/a in model 355RLTS)	O	O
Sink covers (2)	S	S	<b>ELECTRICAL/HEATING/AC</b>			Outside speakers	S	S	16" aluminum wheels (std. in model 345BHS, 355RLTS)	N/A	O
Hi-rise faucet	S	S	12 volt battery disconnect	S	S	Extra large swing-out grab handle at entrance	S	S	Spare tire with steel rim	O	O
Hi-rise faucet with pull out sprayer	N/A	S	30 amp service	S	S	Outdoor kitchen with grill, sink, storage and refrigerator (269BHS, 279BHS, 335RBS and 345BHS only)	S	N/A	Rear ladder	O	S
6 cubic foot double door refrigerator	S	S	55 amp electric converter	S	S	Breakaway switch	S	S	Electric rear stabilizer jacks		
3 – burner stove top with large 21" oven	S	S	13,500 BTU central air conditioner	S	S				(n/a in model 355RLTS)	N/A	O
Microwave oven – turn style	S	S	Double 30 lb. LP bottles with auto change over	S	S	<b>AVAILABLE OPTIONS</b>	L	M	50 amp service with prep for 2nd A/C	N/A	O
Knife block behind stove top	N/A	S	31,000 BTU energy efficient furnace	S	S	Godiva décor	O	O	15,000 BTU central air conditioner	O	O
Lighted power range hood	S	S	GFI circuit	S	S	Fall River décor	O	O	Electric patio awning	O	O
			Awning light receptacle with switch	S	S	Cappuccino décor	O	O	Premium Partial Paint	O	O
						Corian® countertop	N/A	O			
									<b>S – STANDARD</b>	<b>O – OPTIONAL</b>	
									<b>N/A – NOT AVAILABLE</b>		

# MANDATORY PACKAGES

## POLAR PACKAGE

Manufactured for cold weather camping with:

- Roof insulations – R-13
- Wall insulations – R-11
- Floor insulations – R-14
- Fully enclosed underbelly with heated and enclosed dump valves and Thermal Insulation in slide floors and bed and bath deck

## DRY CAMP PACKAGE

- 12 volt stereo/MP3 compatible
- All slide-out lights are 12 volt
- Huge fresh water, gray and black tanks
- Space for dual batteries
- Heavy-duty axles for off road use
- Dedicated space for after market generator — Mid Profile



## TURNTEC ENGINEERING — #1 IN INDUSTRY

Built for short bed trucks. TurnTec combines a specially designed frame utilizing 45 degree corners with an aerodynamic front cap. The result is the most maneuverable fifth wheel in existence!



Forest River, Inc. encourages our customers to purchase their Forest River products from a local dealership whenever possible for the three following reasons:

It is the goal of Forest River, Inc. that all of our RV owners fully enjoy the RV experience and that customer satisfaction meets or exceeds their expectations!

- 1) Forest River, Inc. dealers are independently owned and operated businesses so priority service and scheduling is at their discretion and is often provided to customers that purchased their unit at that dealership.
- 2) Purchasing locally allows customers to establish meaningful relationships with a dealer, enhancing the RV experience through assistance with product questions, user tips or RV regulations for your state or country, and much more!
- 3) Scheduling timely warranty repairs and adjustments through a local dealership provides far greater flexibility and convenience to you, the customer!
- 4) Canadian customers must meet requirements to bring an RV purchased out of the country to their home. These requirements may involve additional inspections and certifications, taxes and fees. Your local Canadian Dealer is a professional at meeting these requirements.

We offer and include major brands in our products!



L A Z B O Y



Congoleum



## Big benefits for new owners



**FREE One Year Membership – Coachmen Owners Association!** Coachmen is proud to sponsor the largest manufacturer sponsored camping club in North America ... Coachmen Owners' Association (COA). COA provides you a world of ways to enjoy your RV. This is FUN ON OVERDRIVE and provides: Free Trip Routing, Exciting Tours & Rallies, Free Campground Directory, Local/State Club Activities, Easy RVing Magazine Free, Theme Park Discounts, Fuel Discounts, Free onebigplanet® Memberships with discounts at 180,000 merchants and Much More!

Every new Coachmen RV buyer is eligible for a 1 Year FREE membership in the Coachmen Owners' Association. It all adds up to an easy ownership experience!

## Travel Easy™ Roadside Assistance



RVing is easier with Coachmen's Travel Easy™ Roadside Assistance provided FREE the first year of ownership to those who purchase a New Coachmen RV. Administered by Coach-Net, this service provides you with 24/7 operational, technical and emergency road service coverage. Also included is towing, fuel delivery, jump starts, lockout service, tire changes, mobile mechanic and unlimited technical assistance. Anywhere. Anytime. Travel Easy™ is the security of knowing that help is an easy phone call away.



**Learn More**  
Scan this barcode using a QR Reader on your smart phone to learn more about Forest River.



A Berkshire Hathaway company.

Colton RV & Marine  
3122 Niagara Falls Blvd.  
North Tonawanda, NY 14120  
(716) 694-0188  
[www.ColtonRV.com](http://www.ColtonRV.com)

Colton RV  
489 Bushkill Plaza LN #9665  
Wind Gap, PA 18091  
(610) 863-5239  
[www.ColtonRV.com](http://www.ColtonRV.com)



**Coachmen RV, a division of Forest River, Inc., a Berkshire Hathaway company.**  
**423 N. Main St., P.O. Box 30, Middlebury, IN 46540**

To learn more about Coachmen RV and our products and see how Coachmen is making the easy life easier, visit [www.coachmenrv.com](http://www.coachmenrv.com)