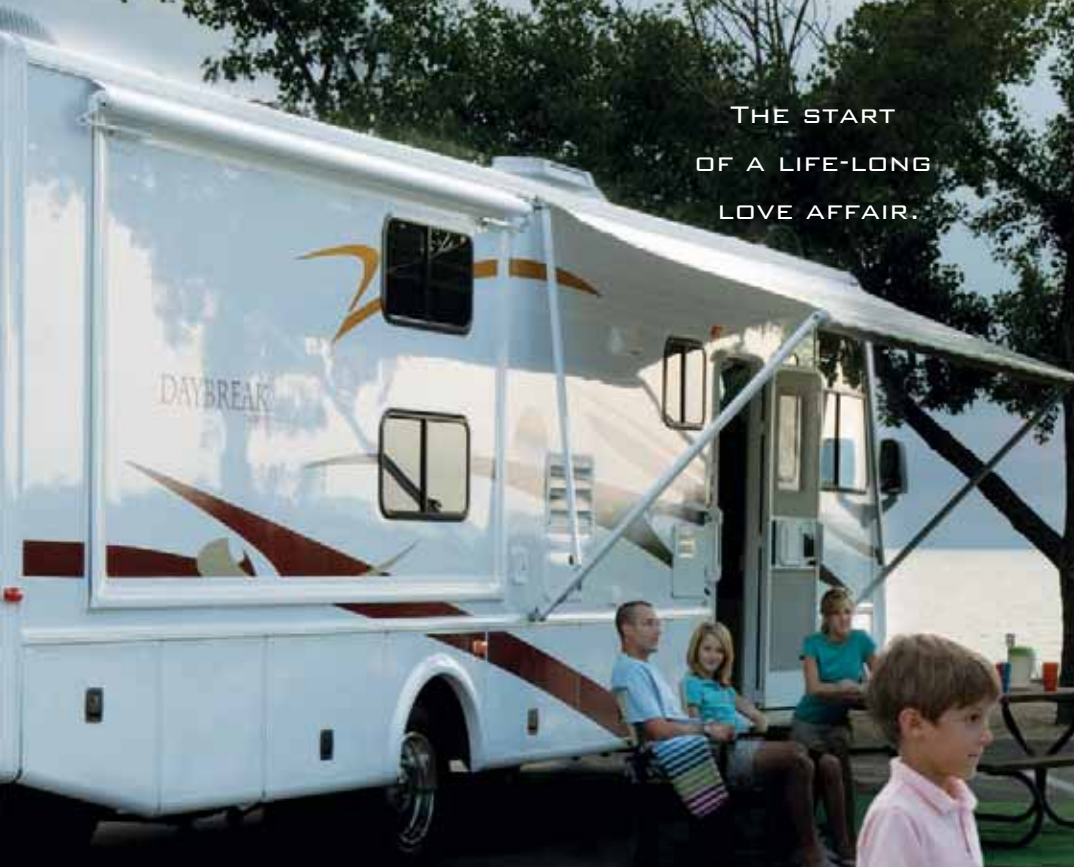


DAYBREAK

2007

THE START
OF A LIFE-LONG
LOVE AFFAIR.



DAMON
MOTOR COACH



A.



B.

Model 3276
Corktree Creek/Dark Oak

THE START OF A LIFE-LONG LOVE AFFAIR.



The all-new 2007 DayBreak is the perfect motorhome to begin your journey into one of the most rewarding experiences of your life – RVing. You'll go far, we're sure. And so will your money – DayBreak is one of the most economical, value-driven motorhomes in the industry. And it's loaded with features you would normally associate with much more expensive coaches. DayBreak is a full-size, Class A wide body, with all the power and performance you'll need to get you where you're going. And we haven't forgotten about luxury – there's plenty of that, too, with an array of amenities and a flair for style plus a very modest price.

Power, luxury and, most important, value for the money. Sounds like this could be true love.

- A. Designer gourmet kitchen accented by beautiful handcrafted solid wood cabinetry.
- B. The gorgeous living environment is enhanced by a spacious slide-out.
- C. Sleek, contemporary cockpit puts instrumentation well within reach. In addition, there's a convenient AM/FM/CD player and backup monitor system with audio.
- D. Comfy bathroom with skylight and rich, solid wood-framed mirror.



C.



D.



A.

Model 3276
Corktree Creek/Dark Oak

PRICELESS. AT A PRICE YOU CAN AFFORD.

Here are just a few of the luxurious feature-benefits you can expect with the value-packed DayBreak:

Damon's Dream Dinette converts from a beautiful dining area to a comfortable double bed in one easy lever-flipping action. It can even be done with one hand. The result is additional sleeping space when family and friends show up unexpectedly.

DayBreak is the only gas-powered Class A that offers Carrier® air conditioners for more efficient cooling and better serviceability. Carrier is a world leader in air conditioning and heating systems.

Spacious pass-through storage compartments will hold everything you want to take along on your trip – including the kitchen sink.

Ball-bearing drawer guides assure smooth operation, plus give the drawers a high-quality feel. They also allow full drawer extension so items in the back are just as accessible as those in the front.

One-touch automatic leveling jacks are usually found in higher priced diesel motorhomes. DayBreak offers them for swift, easy, trouble-free operation.

The solid wood cabinets in rich maple or oak feature a beautiful raised panel design.

A. Kid-friendly bunk beds are a wonderful option. They make this floorplan with two bedrooms perfect for the larger family.

Plus, handsome, handcrafted solid wood wardrobe offers generous room for your finer things.

B. and E. Our Dream Dinette quickly converts to a comfortable full-size bed for unexpected guests.

C. Notice the spacious pantry and the full extension pantry door glides.

D. Entertainment center with 15" flat screen LCD TV in "kids" bunk area.

F. Ample solid wood lower cabinet drawers offer plenty of storage and convenient full extension door glides.





B.



C.



D.



E.



F.

OUR FINER POINTS ARE FINER THAN THE COMPETITION'S.

Choose the décor package you like to customize your own distinct designer style. And whatever you choose, it was made for you.

DÉCOR

We've created a choice of environments that help you feel right at home. Fabrics, flooring and window treatments are carefully coordinated to provide a tasteful, timeless décor.

FLOOR PLANS

We offer a variety of floor plans and each one is thoughtfully laid out to provide a comfortable, relaxed living experience.

PAINT

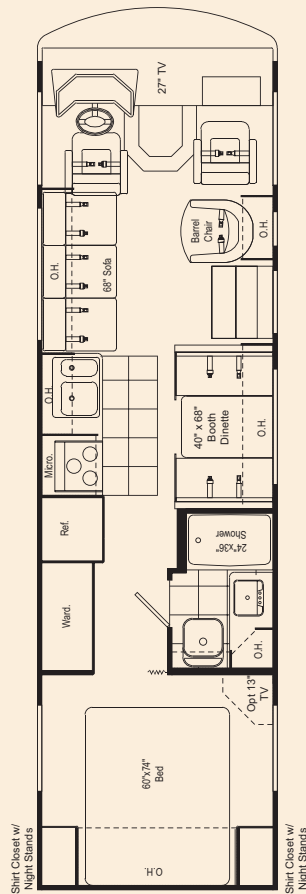
DayBreak's exterior graphic packages are remarkably clean, contemporary, bold and fluid. No other motorhome in its class offers as much.



Corktree Creek

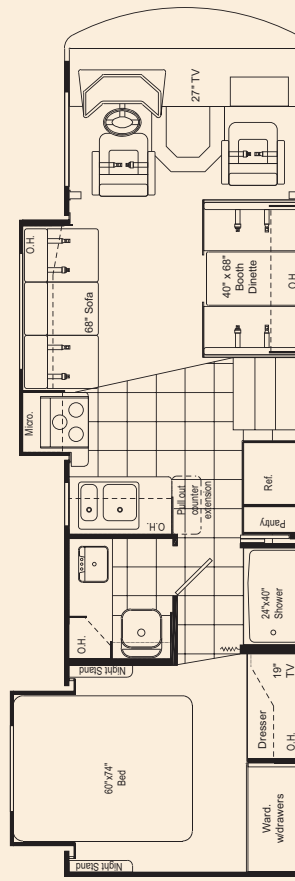


Hickory Pointe



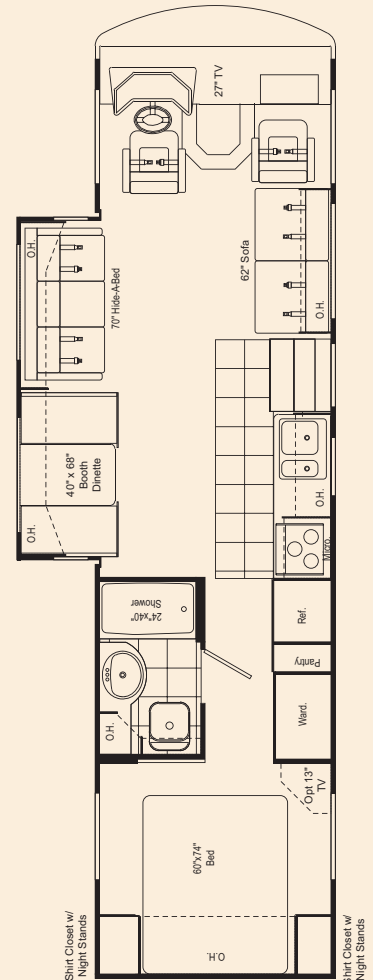
3060

Includes queen bed, private bath and Dream Dinette.



3070

Includes living room and bedroom slideouts, Dream Dinette, private bath and queen bed.



3270

Includes two sofas, living room slideout, Dream Dinette and private bath.



Deluxe Graphics



Parchment Gold



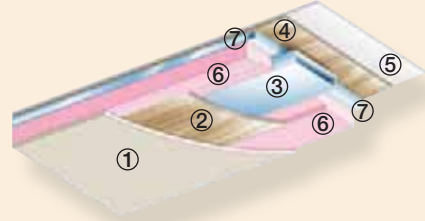
Teakwood Cove



Dark Oak



Honey Maple



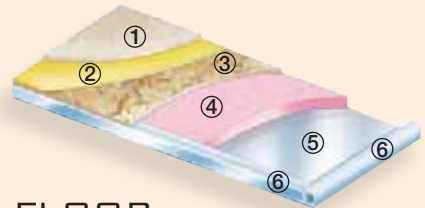
ROOF

- ① Wallboard
- ② Luan (wood)
- ③ Air conditioning duct
- ④ Luan (wood)
- ⑤ TPO roofing
- ⑥ Insulation
- ⑦ Aluminum frame (tubing)



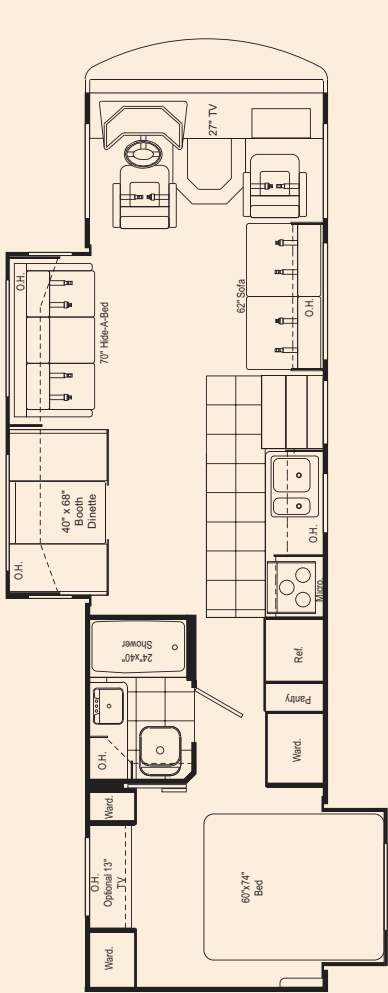
SIDEWALLS

- ① Interior panel
- ② Insulation
- ③ Sidewall Mende board (inside)
- ④ Sidewall Mende board (outside)
- ⑤ Aluminum frame (tubing)



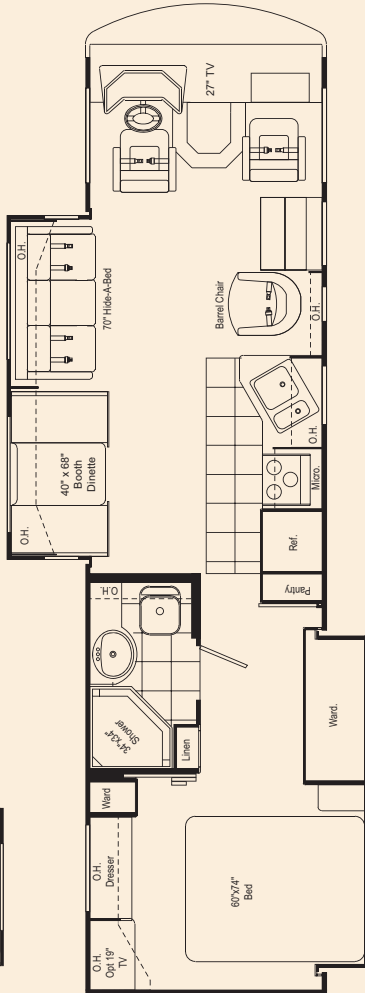
FLOOR

- ① Carpet
- ② Padding
- ③ Structurwood® floor
- ④ Insulation
- ⑤ Galvanized metal
- ⑥ Steel frame (tubing)



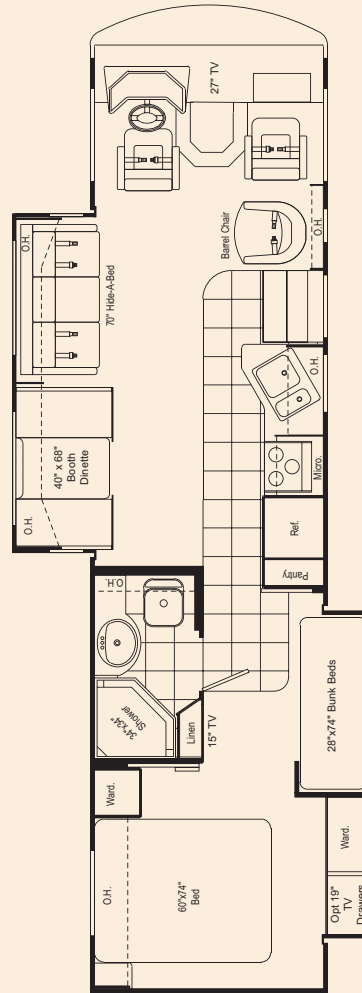
3272

Includes living room and bedroom slideouts, Dream Dinette and private bath.



3274

Includes living room slideout, super bedroom slideout including wardrobe and private neo-angle shower.



3276

Includes living room slideout, super bedroom slideout including bunk beds and wardrobe and private neo-angle shower.

A. Convenient control center includes tank levels, slide room control, water pump and the handy remote control for the Carrier air conditioning system.

B. DayBreak offers a huge, pass-through cargo area plus an optional, easily removable LCD TV that can be used outdoors or indoors (3276 only).



A.



B.

DAYBREAK STANDARD SPECIFICATIONS AND FEATURES

Exterior

Wide-body design
Rear ladder
Fiberglass front and rear caps
Side-mounted patio awning
Side-mounted awning over slideout(s) (n/a on 3060)
White smooth fiberglass exterior with deluxe graphics
Radius-cornered domed TPO roof
Locking exterior storage doors
White-trimmed, radius-topped entrance door with deadbolt lock and black-trimmed window with shade and valance
Black-framed, radius-cornered windows
Patio light
Easy-to-clean, lighted, rotocast storage compartments
Pass-through storage compartment

Chassis

Automatic leveling jacks with touchpad controls (n/a on 3060)
Stainless-steel wheel liners
Front and rear mud flaps
Trailer hitch (Workhorse: 3,500 tow lbs. / 350 tongue lbs. | Ford: 5,000 / 500)
Under-hood light
Emergency start circuit
Automatic transmission with overdrive
Layer of neoprene vibration dampener

Entry

Electric exterior entrance step
Battery access in stairwell

Cockpit

Vinyl covered dash with pod
AM/FM/CD player (single-disc, in-dash)
Cruise control
Tilt steering wheel
Map lights
Dash fans
Tinted wraparound windshield
Windshield privacy shade
Side-mounted power mirrors with heat
Reclining swivel captain's chairs
3-point, wall-mounted seat belts
Sun visors
Electronically controlled dash air conditioning
Backup monitor system with audio (n/a on 3060)
Drink holders

Living Area

Sofa bed (n/a on 3274 & 3276)
Hide-a-bed (n/a on 3060 & 3070)

Lambrequin window treatments
Mini blinds throughout
100% nylon carpet with stain treatment and pad
27" color TV with full-function remote in front overhead with antenna booster and jack

Kitchen

Refrigerator: flush-mounted, double-door
Refrigerator: raised-panel solid wood front (dark oak or honey maple)
3-burner range and oven
Range cover
Microwave oven
Lighted power range hood
Monitor panel with LPG readout
Sink covers
Solid wood, raised-panel cabinet doors (upper and lower)

Vinyl tile flooring
Booth dinette
Mini blinds
Wallpaper border

Bedroom

Standard foam mattress
Bunk beds (3276 only)
Bedsprad
Pillow shams and pillows
TV area and jack
15" LCD color TV (3276 only)
Mini blinds (always at bunk beds)
Framed mirror over bed

Bathroom

Shower with ABS surround
Shower door
Skylight in tub/shower
Power vent
Hand-flush toilet
Medicine cabinet
Solid wood-framed mirror
Vinyl tile flooring
Wallpaper border

Utilities

Air conditioner: 13,500-BTU ducted central (front)
Remote thermostatically controlled air conditioning
Furnace: 31,000-BTU electronic ignition, floor-ducted with surface-mounted door
Water heater: 6-gallon gas with electronic ignition and surface-mounted door
Water heater bypass kit
Pre-wired for generator with auto changeover
Generator: 5.0 kW Generac® Impact™ (30-amp service only)
Converter: 60-amp
Dual 6-volt auxiliary batteries
Battery disconnect
30-amp, 120-volt service
Enclosed and heated holding tanks
Black water tank flush
Telephone hookup
Cable TV/satellite hookup inside storage area
Pre-wired for roof-mounted satellite dish

Exterior GFCI receptacle
Carbon monoxide, LP gas and smoke detectors

Popular Options

Special exterior package – Charcoal Metallic paint, purple/yellow graphics and pewter awning (3276 only)
Partial paint package
Upgraded high-gloss sidewall
Black-framed, dual-pane windows
Sofa (faux leather) (n/a on 3274 & 3276)
Hide-a-bed (faux leather) (n/a on 3060 & 3070)
Day/night shades
Video package (VCR/DVD player and control center)
Refrigerator: large flush-mounted, double-door
Freestanding dinette with two chairs (n/a on 3060 & 3070)
Two folding chairs (optional with free-standing dinette)
Upgraded innerspring mattress
13" color TV (n/a on 3274 & 3276)
19" color TV (3274 & 3276 only)
Air conditioner: 13,500-BTU ducted central (rear)
Generator: 5.5 kW Onan® Marquis Gold™
50-amp, 120-volt service (requires 5.5 kW Onan® generator)
Exterior shower

Weights and Measures	3060	3070	3270	3272	3274	3276
Chassis	Workhorse/Ford	Workhorse/Ford	Workhorse/Ford	Workhorse/Ford	Workhorse/Ford	Workhorse/Ford
Wheelbase	190	190	216.5	208	228	228
Overall length	31'4"	30'8"	34'5"	33'5"	34'11"	35'4"
Overall width	101"	101"	101"	101"	101"	101"
Overall height with AC	12'0"	12'0"	12'0"	12'0"	12'0"	12'0"
Std. weight (approx. lbs.)	13,719/13,717	14,979/15,338	15,452/15,811	15,618/15,975	16,946/16,636	16,896/16,661
GVWR	18K/15.7K	18K/20.5K	18K/20.5K	18K/20.5K	20.7K/20.5K	20.7K/20.5K
GCWR	22K/26K	22K/26K	22K/26K	22K/26K	26K/26K	26K/26K
Fresh water (approx. gal.)	45	71	71	71	71	71
Grey/black water (approx. gal.)	53/53	53/53	53/53	53/53	53/39	53/39
LP (lbs.)	81	81	81	81	81	81
Sleeping capacity	4	4	5	5	4	6
Exterior storage capacity (cu. ft.)	93	116	163	74	174	131
Interior drawers	6	12	10	14	17	15
Interior drawer capacity (cu. ft.)	6.5	12	8.5	11	13.5	10
Fuel capacity (approx. gal.)	75	75	75	75	75	75

CHASSIS

Quality construction starts with the chassis. And DayBreak uses only the finest: Either a robust, rugged Ford® or Workhorse® chassis, depending on the floor plan you choose.



Colton RV & Marine
3122 Niagara Falls Blvd
North Tonawanda, NY 14120
(716) 694-0188
www.ColtonRV.com

Colton RV & Marine
3443 Southwestern Blvd.
Orchard Park, NY 14127
(716) 957-3250
www.Coltonrv.com



DAMON
MOTOR COACH

P.O. Box 2888 • Elkhart, IN 46515
Customer Service: 800-860-3812
Sales Department: 800-860-5658
www.DamonRV.com



DC 8/06 © 2006 Damon Motor Coach Printed in U.S.A.

Due to constant product improvements, the specifications, component parts and standard/optional equipment are subject to change without notice or obligation. Product photography or diagrams may show equipment that is optional. Damon Motor Coach reserves the right to make changes in prices and models and to discontinue models without notice or obligation. Components, parts or chassis may have been manufactured at times other than the model year indicated. All capacities are approximate and dimensions are nominal. All dry weights are based on standard model features and do not include optional features or equipment. Various RV components and features may differ to conform to local codes. Due to EPA environmental restrictions, engine power and torque ratings may change mid-year.