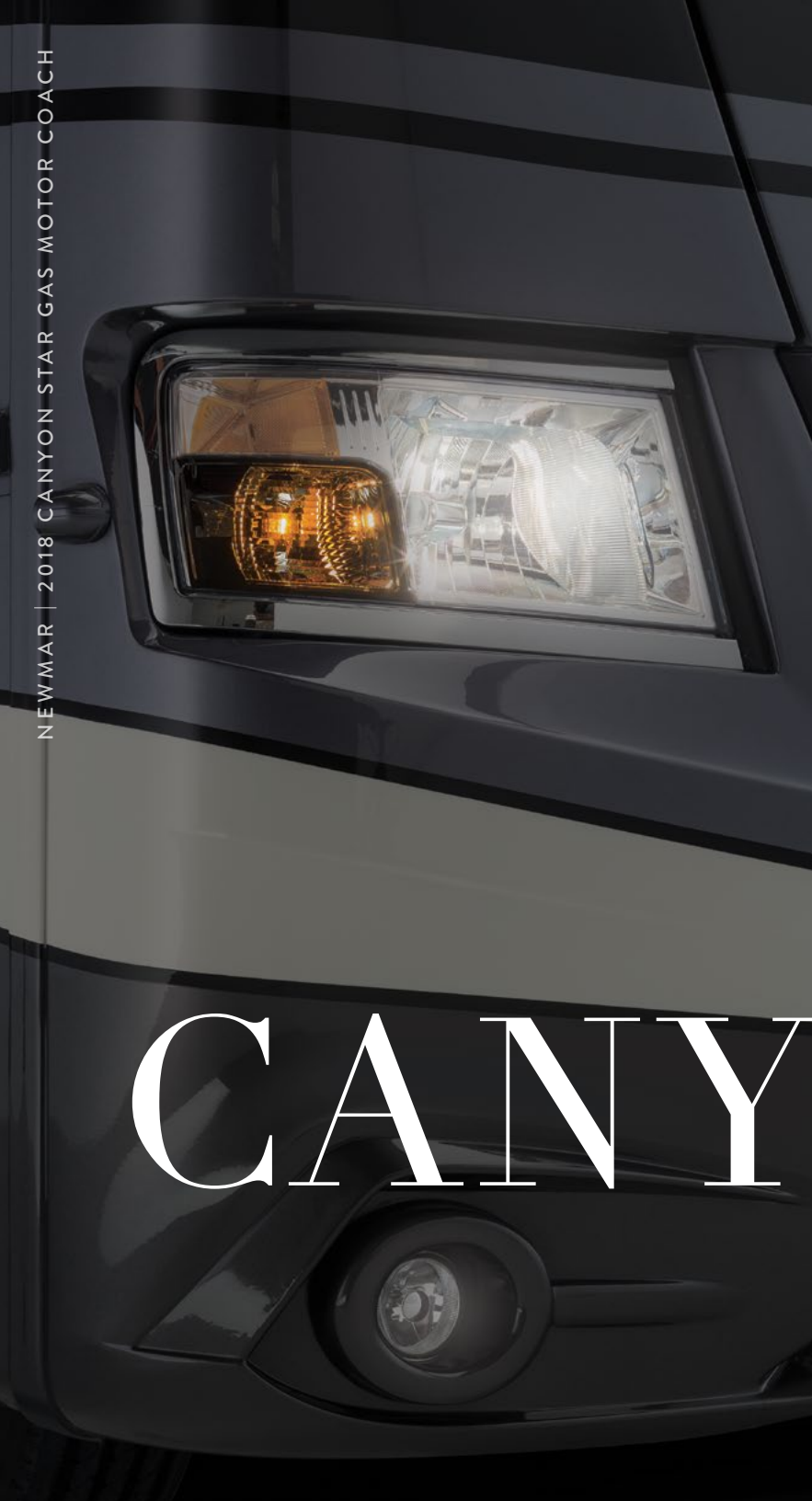
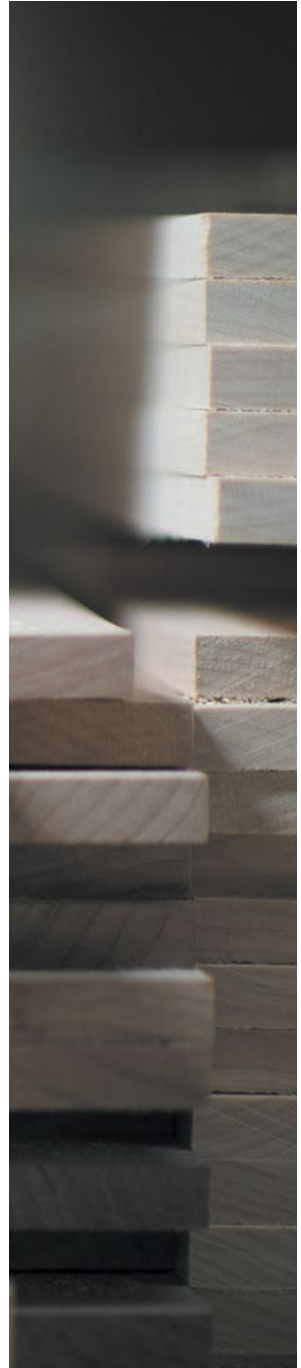


NEWMAR | 2018 CANYON STAR GAS MOTOR COACH



# CANYON STAR

50 YEARS HAVE TAUGHT US...  
THE DIFFERENCE LIES IN THE DETAILS.



LEADING THE WAY  
**FORWARD**

At Newmar, our first 50 years have taught us that the brightest futures are realized by those willing to blaze a new trail. Lead rather than follow. And reject cookie-cutter imitation in favor of cutting-edge innovation. That's why we are committed to spending the next half century creating handcrafted motor coaches that go above and beyond their batch-built competition. Coaches designed and engineered to help you live the RV lifestyle to the absolute fullest. Join us, and discover the Newmar difference for yourself.

Matt Miller, President





Full-paint Masterpiece™ Finish | Excalibur Exterior | Floor Plan 3918

## EVEN MORE TO LOVE

Furthering its standing as the industry's most luxurious gas-engine coach, the 2018 Canyon Star offers twelve total floor plan options, including five all-new designs. Built on a 26,000-lb. Ford® F-53 chassis, Canyon Star is covered by our full-paint Masterpiece™ finish and topped with a power side awning.

**Shine brighter**

Excalibur full-paint  
Masterpiece™ finish

**Tailgate-ready**

Available Sony® exterior  
entertainment center

# SIT BACK AND RELAX

Available with a jackknife sofa, surround sound system, and a Winegard® Connect™ Wi-Fi range booster, Canyon Star lets you enjoy residential amenities from the road. To help you feel even more at home, a Sony® LED TV and a backlit wood fascia are a part of every floor plan.

**Wide-open space**  
Floor plan 3918 with  
Excalibur décor

**Have a seat**  
Flexsteel® Ultralux  
leather sofa



Excalibur Décor with Verona Glazed Maple Cabinetry | Floor Plan 3918



## COMFORT ON DEMAND

Begin each journey with support from a power-adjustable driver's seat, while your travel companion enjoys a footrest and stowable workstation. Expecting a crowd? Canyon Star offers a dinette booth that doubles as extra sleeping quarters, as well as a sofa that converts to bunk beds in seconds.

**The right look**  
Premium vinyl tile flooring

**An ideal space**  
Available booth dinette



# ALL THE RIGHT INGREDIENTS

The Canyon Star is full of detail, from the polished solid-surface countertops and diamond-patterned backsplash, to the glazed wood cabinetry made in-house by Newmar artisans. Select floor plans can be had with an outdoor kitchen, which includes a refrigerator, microwave, and sink.

**Ample storage**

Verona glazed maple cabinetry

**Room for more**

Available 19.7 Cf. Whirlpool® refrigerator





## EVERYTHING YOU WANT

Canyon Star offers both bath-and-a-half and two-full-bath floor plans, along with an available Whirlpool® stacked washer and dryer. Inside the master bedroom, there awaits a spacious lit hardwood wardrobe and a Sony® LED TV and DVD player.

### **Live large**

Available King bed with leather-bound headboard

### **Just like home**

Available 40" x 32" residential shower



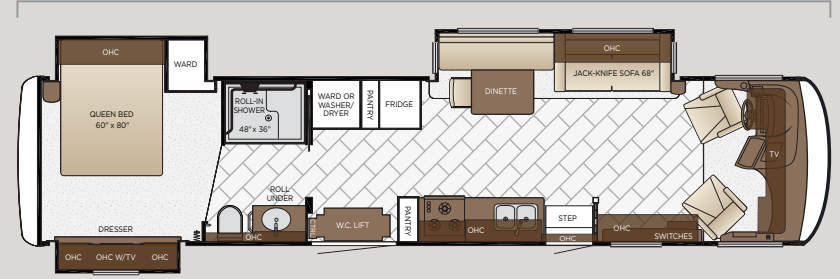


2016 Illusion décor shown | Floor Plan 3911

# DESIGNED WITH PURPOSE

The industry's first wheelchair-accessible Class A motorhome, Canyon Star 3911 is fitted with a BraunAbility® power wheelchair lift, a 30"-wide aisleway, a roll-in shower, and lowered switches and appliances throughout.

Length: 39' 11"



## 3911

|                     |        |              |            |
|---------------------|--------|--------------|------------|
| Length              | 39'11" | Grey Tank    | 60 gal.    |
| Width               | 101.5" | Sewage Tank  | 40 gal.    |
| App. Overall Height | 12'11" | Water Tank   | 75 gal.    |
| Interior Width      | 95.5"  | Propane Tank | 25 gal.    |
| Interior Height     | 84"    | Furnace      | 40,000 btu |



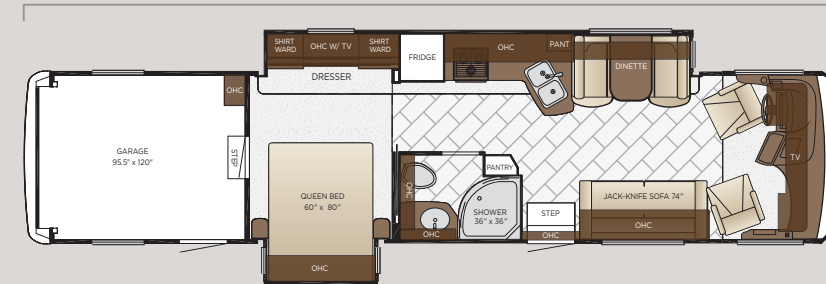




# BRING THEM WITH YOU

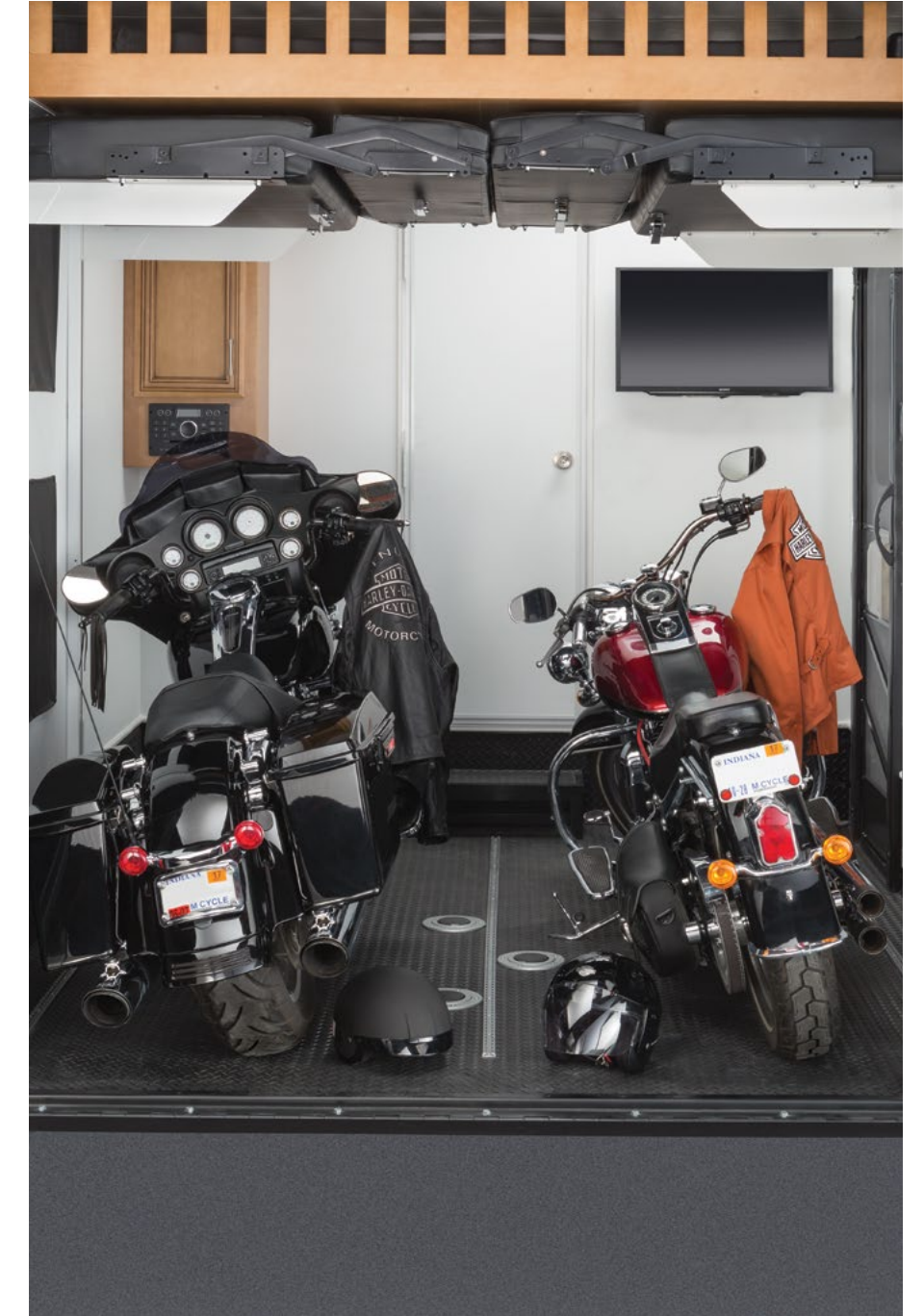
The largest multipurpose space available in the entire Newmar lineup, Canyon Star 3921 is a highly versatile toy hauler that can easily accommodate guests or gear. Built with a high-strength ramp capable of loading and unloading motorcycles, ATVs, and more, 3921 even includes washable diamond tread rubber flooring.

Length: 39' 11"



## 3921

|                     |        |              |            |
|---------------------|--------|--------------|------------|
| Length              | 39'11" | Grey Tank    | 60 gal.    |
| Width               | 101.5" | Sewage Tank  | 40 gal.    |
| App. Overall Height | 12'11" | Water Tank   | 75 gal.    |
| Interior Width      | 95.5"  | Propane Tank | 25 gal.    |
| Interior Height     | 84"    | Furnace      | 42,000 btu |

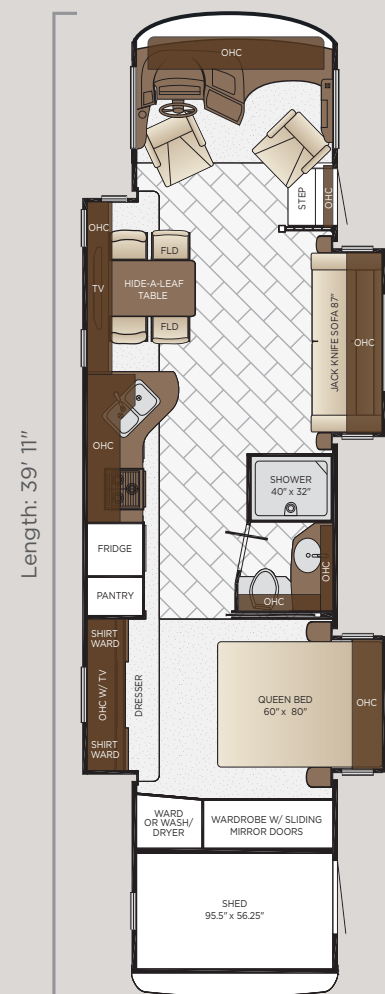


# A PLACE FOR EVERYTHING

Bring the fun without sacrificing interior room with Canyon Star Utility Shed 3923, an innovative floor plan built with a just-right-sized rear storage space capable of housing your favorite outdoor equipment, from bicycles to golf bags. What's more, Utility Shed is covered by washable diamond tread rubber flooring.

**Easy access**  
Side entry door with ramp and fold-down steps

**Made to last**  
Gladiator® brackets and diamond-plated cabinets



## 3923

|                     |            |
|---------------------|------------|
| Length              | 39'11"     |
| Width               | 101.5"     |
| App. Overall Height | 12'11"     |
| Interior Width      | 95.5"      |
| Interior Height     | 84"        |
| Grey Tank           | 60 gal.    |
| Sewage Tank         | 40 gal.    |
| Water Tank          | 75 gal.    |
| Propane Tank        | 25 gal.    |
| Furnace             | 40,000 btu |





# A SPACE THAT'S ALL YOURS

All new for 2018, Canyon Star 3924 boasts a feature-packed rear patio that extends via a ramp door, and comes complete with a rear kitchen, LED TV, and dropdown steps fitted with a railing.



## 3924

|                     |        |              |            |
|---------------------|--------|--------------|------------|
| Length              | 39'11" | Grey Tank    | 60 gal.    |
| Width               | 101.5" | Sewage Tank  | 40 gal.    |
| App. Overall Height | 12'11" | Water Tank   | 75 gal.    |
| Interior Width      | 95.5"  | Propane Tank | 25 gal.    |
| Interior Height     | 84"    | Furnace      | 40,000 btu |



## EXTERIOR & INTERIOR DÉCOR



**DELLWOOD EXTERIOR**

*Awning Color: Linen Tweed*



**DELLWOOD INTERIOR**

*a. Furniture/ Fabric b. Flooring c. Carpet d. Counter Top*



**EXCALIBUR EXTERIOR**

*Awning Color: Charcoal Tweed*



**EXCALIBUR INTERIOR**

*a. Furniture/ Fabric b. Flooring c. Carpet d. Counter Top*

## OPTIONAL LUXURY VINYL PLANK FLOORING



**ASTORIA / WICKER  
MAPLE FLOORING**



**SIENNA / VERONA  
MAPLE FLOORING**



**CALYPSO / BERMUDA  
MAPLE FLOORING**



**ASTORIA / WICKER MAPLE**

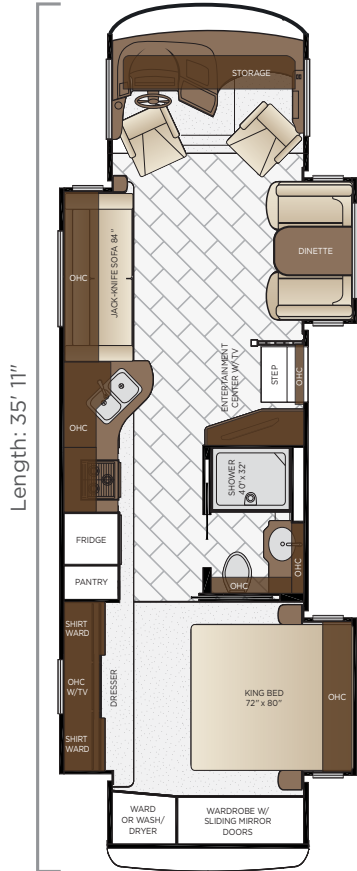


**SIENNA / VERONA MAPLE**



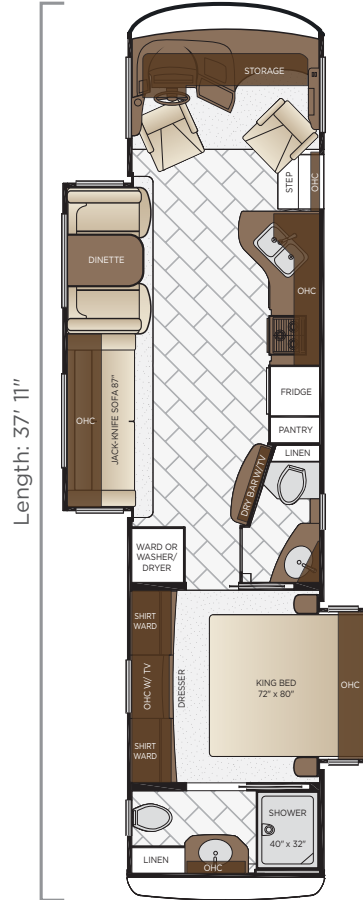
**CALYPSO / BERMUDA MAPLE**

# CANYON STAR



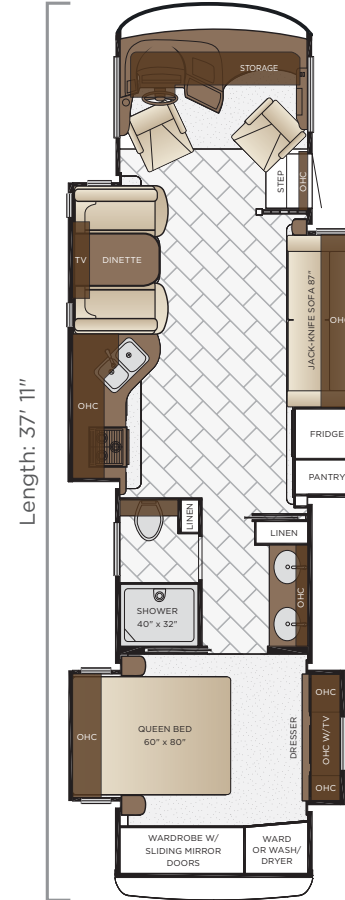
## 3513

|                     |            |
|---------------------|------------|
| Length              | 35'11"     |
| Width               | 101.5"     |
| App. Overall Height | 12'11"     |
| Interior Width      | 95.5"      |
| Interior Height     | 84"        |
| Grey Tank           | 60 gal.    |
| Sewage Tank         | 40 gal.    |
| Water Tank          | 75 gal.    |
| Propane Tank        | 25 gal.    |
| Furnace             | 40,000 btu |



## 3710

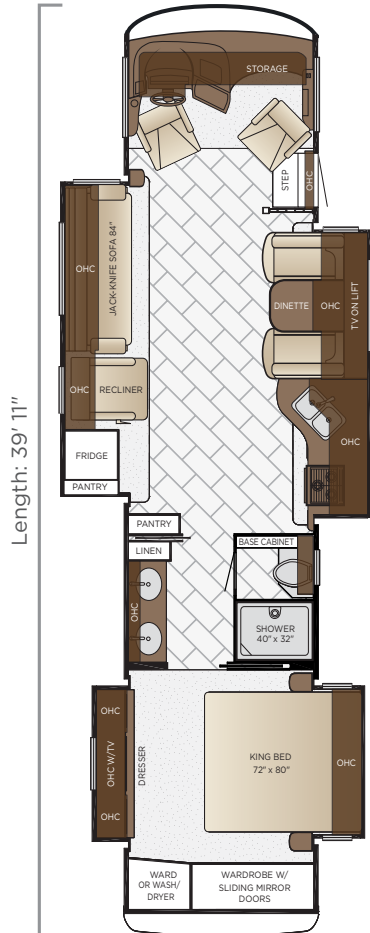
|                     |            |
|---------------------|------------|
| Length              | 37'11"     |
| Width               | 101.5"     |
| App. Overall Height | 12'11"     |
| Interior Width      | 95.5"      |
| Interior Height     | 84"        |
| Grey Tank           | 60 gal.    |
| Sewage Tank         | 92 gal.    |
| Water Tank          | 75 gal.    |
| Propane Tank        | 25 gal.    |
| Furnace             | 40,000 btu |



## 3716

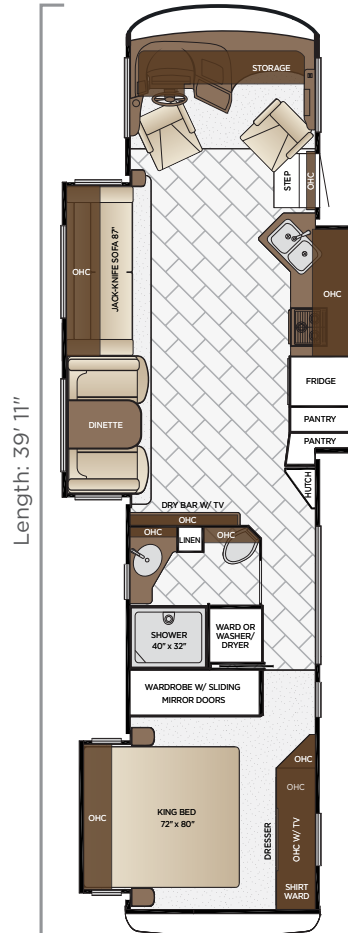
|                     |            |
|---------------------|------------|
| Length              | 37'11"     |
| Width               | 101.5"     |
| App. Overall Height | 12'11"     |
| Interior Width      | 95.5"      |
| Interior Height     | 84"        |
| Grey Tank           | 60 gal.    |
| Sewage Tank         | 40 gal.    |
| Water Tank          | 75 gal.    |
| Propane Tank        | 25 gal.    |
| Furnace             | 40,000 btu |

# FLOOR PLANS



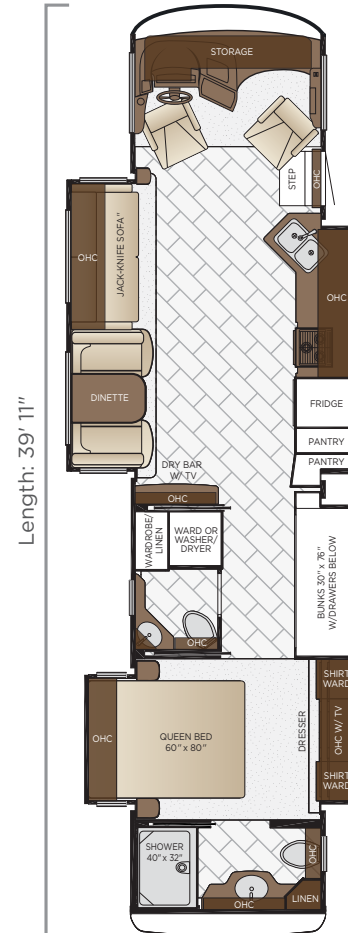
## 3901

|                     |            |
|---------------------|------------|
| Length              | 39'11"     |
| Width               | 101.5"     |
| App. Overall Height | 12'11"     |
| Interior Width      | 95.5"      |
| Interior Height     | 84"        |
| Grey Tank           | 60 gal.    |
| Sewage Tank         | 40 gal.    |
| Water Tank          | 75 gal.    |
| Propane Tank        | 25 gal.    |
| Furnace             | 40,000 btu |



## 3918

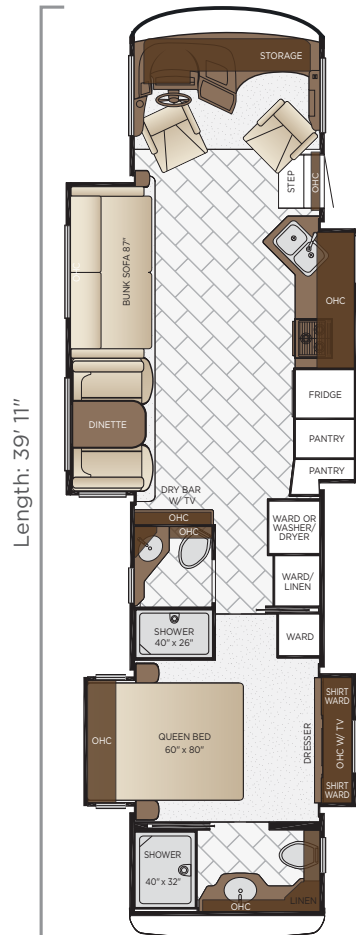
|                     |            |
|---------------------|------------|
| Length              | 39'11"     |
| Width               | 101.5"     |
| App. Overall Height | 12'11"     |
| Interior Width      | 95.5"      |
| Interior Height     | 84"        |
| Grey Tank           | 60 gal.    |
| Sewage Tank         | 40 gal.    |
| Water Tank          | 75 gal.    |
| Propane Tank        | 25 gal.    |
| Furnace             | 40,000 btu |



## 3926

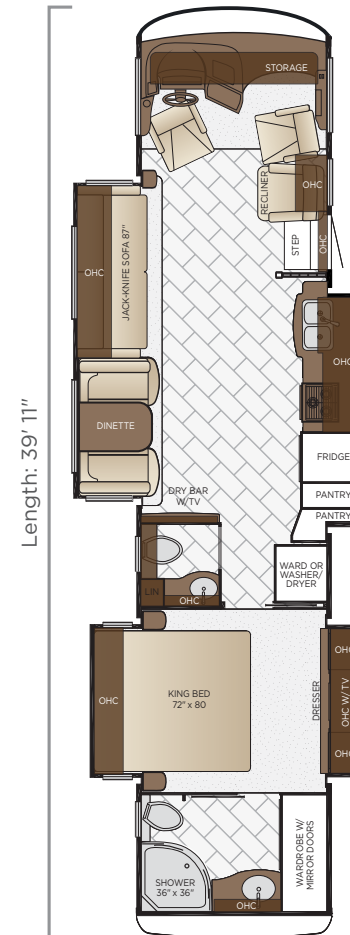
|                     |            |
|---------------------|------------|
| Length              | 39'11"     |
| Width               | 101.5"     |
| App. Overall Height | 12'11"     |
| Interior Width      | 95.5"      |
| Interior Height     | 84"        |
| Grey Tank           | 60 gal.    |
| Sewage Tank         | 92 gal.    |
| Water Tank          | 75 gal.    |
| Propane Tank        | 25 gal.    |
| Furnace             | 40,000 btu |

# FLOOR PLANS



## 3928

|                     |            |
|---------------------|------------|
| Length              | 39'11"     |
| Width               | 101.5"     |
| App. Overall Height | 12'11"     |
| Interior Width      | 95.5"      |
| Interior Height     | 84"        |
| Grey Tank           | 60 gal.    |
| Sewage Tank         | 92 gal.    |
| Water Tank          | 75 gal.    |
| Propane Tank        | 25 gal.    |
| Furnace             | 40,000 btu |



## 3953

|                     |            |
|---------------------|------------|
| Length              | 39'11"     |
| Width               | 101.5"     |
| App. Overall Height | 12'11"     |
| Interior Width      | 95.5"      |
| Interior Height     | 84"        |
| Grey Tank           | 60 gal.    |
| Sewage Tank         | 92 gal.    |
| Water Tank          | 75 gal.    |
| Propane Tank        | 25 gal.    |
| Furnace             | 40,000 btu |





# QUALITY YOU CAN FEEL

Like a fine home, the 2018 Canyon Star is framed 16 inches on center, and is covered by a fiberglass roof with walkable decking and an integrated gutter rail.

| FLOOR PLAN | ENGINE HP | AXLE RATIO | FUEL CAP. | WHEEL BASE | FRONT GAWR | REAR GAWR | TAG GAWR | GVWR      | GCWR      | APP. UVW  | APP. NCC |
|------------|-----------|------------|-----------|------------|------------|-----------|----------|-----------|-----------|-----------|----------|
| 3513       | 320       | 6.17       | 80 gal.   | 220        | 9000 lb.   | 17500 lb. | n/a      | 26000 lb. | 30000 lb. | 20906 lb. | 5094 lb. |
| 3710       | 320       | 6.17       | 80 gal.   | 242        | 9000 lb.   | 17500 lb. | n/a      | 26000 lb. | 30000 lb. | 20594 lb. | 5406 lb. |
| 3716       | 320       | 6.17       | 80 gal.   | 242        | 9000 lb.   | 17500 lb. | n/a      | 26000 lb. | 30000 lb. | 21200 lb. | 4800 lb. |
| 3901       | 320       | 6.17       | 80 gal.   | 266        | 9000 lb.   | 17500 lb. | n/a      | 26000 lb. | 30000 lb. | 22222 lb. | 3778 lb. |
| 3911       | 320       | 6.17       | 80 gal.   | 260        | 9000 lb.   | 17500 lb. | n/a      | 26000 lb. | 30000 lb. | 21879 lb. | 4121 lb. |
| 3918       | 320       | 6.17       | 80 gal.   | 266        | 9000 lb.   | 17500 lb. | n/a      | 26000 lb. | 30000 lb. | 22842 lb. | 3158 lb. |
| 3921       | 320       | 6.17       | 80 gal.   | 266        | 9000 lb.   | 17500 lb. | n/a      | 26000 lb. | 30000 lb. | 21629 lb. | 4371 lb. |
| 3923       | 320       | 6.17       | 80 gal.   | 266        | 9000 lb.   | 17500 lb. | n/a      | 26000 lb. | 30000 lb. | 22659 lb. | 3341 lb. |
| 3924       | 320       | 6.17       | 80 gal.   | 266        | 9000 lb.   | 17500 lb. | n/a      | 26000 lb. | 30000 lb. | 22659 lb. | 3341 lb. |
| 3926       | 320       | 6.17       | 80 gal.   | 260        | 9000 lb.   | 17500 lb. | n/a      | 26000 lb. | 30000 lb. | 23062 lb. | 2938 lb. |
| 3928       | 320       | 6.17       | 80 gal.   | 260        | 9000 lb.   | 17500 lb. | n/a      | 26000 lb. | 30000 lb. | 22758 lb. | 3242 lb. |
| 3953       | 320       | 6.17       | 80 gal.   | 260        | 9000 lb.   | 17500 lb. | n/a      | 26000 lb. | 30000 lb. | 22708 lb. | 3292 lb. |

**The content in our literature depicts and describes products that are subject to change. For the most recent images and information, please visit [NewmarCorp.com](http://NewmarCorp.com).**

Lengths, heights, widths and dry weights are approximate. Weight will vary based on optional equipment added to the above base weight.

**GAWR:** Gross Axle Weight Rating is the maximum permissible weight for an axle.

**GVWR:** Gross Vehicle Weight Rating is the maximum permissible weight for a fully loaded motor coach.

**GCWR:** Gross Combination Weight Rating is the value specified by the manufacturer of the vehicle as the maximum allowable loaded weight of this motor coach and any towed trailer or towed vehicle.

**UVW:** Unloaded Vehicle Weight is the weight of this motor coach as built at the factory with full fuel, engine oil and coolants. Does not include cargo, fresh water, propane gas or dealer-installed accessories.

**NCC:** Net Carrying Capacity is the maximum weight of all occupants, including the driver, personal belongings, food, fresh water, waste water, propane gas, tools, tongue weight of towed vehicle, dealer-installed accessories, etc., that can be carried by the motor coach.

**Specifications supplied by the chassis manufacturer.**

**Canyon Star R-Values:**

Roof R-Value = 16

Sidewall R-Value = 11

Floor R-Value = 11

# FEATURES & OPTIONS



# EXTERIOR

## EXTERIOR FEATURES

Full-paint Masterpiece Finish™ with Clearcoat Finish

Dura Shield Protection on Front Cap

Convex Exterior Mirrors with Defrost and Remote Control

Entrance Door with Automatic Step

Entrance Door with Automatic Triple Step in Garage\* (3921 Floor Plan)

Entrance Door with Ramp & Automatic Triple Step\* (3923 Floor Plan)

Fueling Station in Garage\* (3921 Floor Plan)

Rear Hitch for Towing Car

Garage Rear Ramp Access Designed for ATV & Normal Clearance Motorcycle

Rear Deck, Rails and Ladder Kit on 3924

Assist Handle at Entrance Door

Wheelchair lift on 3911 Floor Plan

Stainless Steel Exterior Trim Pieces on Front Cap and Grille Area

Chrome Exterior Baggage Door Handles

Hydraulic Leveling Jacks

Undercoating

Mud Flaps

## OPTIONS

Rear Ladder

Rear Protective Tow Guard with Stainless Newmar Letters

Flag Pole Bracket

Temporary Windshield Protection-For Transport Only

## CONSTRUCTION FEATURES

BriteTEK™ Roof with Walkable Decking

5/8" Foam Insulation Laminated in Sidewalls and Ceiling

Gelcoated Fiberglass Exterior Sidewalls, Front and Rear Caps

Aluminum-Frame Sidewalls & Roof Construction, 16" on Center

## OPTIONS

One Piece Molded Fiberglass Roof

Polar Pak R19 Batten Insulation in Roof

Power Opening Wheelchair Lift Entrance Door on 3911 Floor Plan

Exterior Kitchen on Door Side Rear of Unit\*

\*Check with dealership on floor plan availability.

The content in our literature depicts and describes products that are subject to change. For the most recent images and information, please visit [NewmarCorp.com](http://NewmarCorp.com).

## WINDOWS, AWNINGS & VENTS

|  |
|--|
| Frameless Double-Pane Tinted Safety Glass Windows                      |
| Fantastic® Vent with Rain Sensor in Kitchen, Bathroom and 3921 Garage* |
| Skylight Above Shower  |
| Skylight in 3923 Shed Area   |
| Dometic® Weather Pro Side Awning with Aluminum Weather Shield          |
| Slideout Covers  |
| One Piece Tinted Windshield  |
| <b>OPTIONS</b>   |
| Kitchen Window   |
| Rear Window in Bedroom*  |
| Driver's Door with Power Window  |
| Power Screen for Rear Cargo Door*                                      |

## CHASSIS FEATURES

|                               |
|-------------------------------|
| Ford® F-53 26,000 lb. Chassis |
| Cruise Control                |
| Tilt Steering Wheel           |
| Aluminum Wheels               |

## AIR CONDITIONING & HEATING

|   |
|---|
| Two 13.5M Penguin Central Air Conditioners                |
| Dash Heater and Air Conditioner                           |
| Defrost Fans Built Into Front Overhead                    |
| Driver & Passenger Dash Overhead Ventilation System       |
| Propane Gas Furnace with Ducted Heat                      |
| <b>OPTIONS</b>  |
| Two 13.5M Penguin™ Heat Pump Central Air Conditioners     |
| 13.5M Penguin™ Air Conditioner with Heat Strip in Garage* |
| Auxiliary Heater in Bedroom                               |

## ELECTRICAL FEATURES

|   |
|---|
| 5.5 kW Cummins Onan® Generator with Remote Switch and Automatic Changeover                    |
| 50 Amp Electrical Service with Flexible Cord and Automatic Transfer Switch                    |
| Two 12 Volt House Batteries   |
| Battery Disconnect Switch for House Battery   |
| 12 Volt Auxiliary Recept on Dashboard   |
| 10 Watt Solar Panel to Charge Chassis Battery   |
| 1000 Watt Inverter Run to Drain Lift Pump & TV's on 3513, 3716, 3901, 3918 & 3923 Floor Plans |
| 60 Amp Converter  |
| Daytime Running Lights  |
| Emergency Engine Start Switch   |
| Accent Lights in Slideout Fascia Trim   |
| LED Ceiling Lights Throughout   |
| Lighted Wardrobe  |
| Manually Operated Hold-To-Run Slideout Switch   |
| Energy Management System  |
| USB Charger at Passenger Seat Area and at Dash for Driver Use                                 |
| Cable TV Connection   |
| Fog Lights  |
| Lights in Exterior Storage Compartments, Controlled by an Interior Master Switch              |
| <b>OPTIONS</b>  |
| 1000 Watt Inverter Run to TVs*  |
| 7.0 kW Onan Generator   |
| Power Rewind Reel with 34' Cord*  |
| Solar Prep  |

## PLUMBING & BATH FEATURES

|   |
|---|
| Demand Water System                       |
| Sewage Holding Tank Rinse                 |
| Water Heater Bypass System                |
| Dometic® 321 China Bowl Stool*            |
| ABS Shower with Shower Door               |
| Exterior Shower                           |
| Water Filter for Entire Unit              |
| Systems Monitor Panel                     |
| Sink and Faucet in Rear Deck Room on 3924 |

## INTERIOR FEATURES

|   |
|---|
| Padded Vinyl Ceiling  |
| Carpeting in Bedroom and On Slideout Floors   |
| Inlaid Six Panel Design Interior Passage Doors  |
| Auto Motion Power Shade at Windshield & Manual Shades at Driver/Passenger Side Windows                |
| Auto Motion Manual Double Roller Window Shades*   |
| Dash Panel Color Coordinated ABS  |
| Decorative Wall Art*  |
| Quilted Bedspread and Accent Pillow   |
| Vinyl Tile Floor in Kitchen, Bathroom & Living Area   |
| Interior Assist Handle at Main Entrance Door  |
| Shoe Storage Located in Entrance Door Step Compartment*   |
| Diamond Tread Rubber Flooring in Garage & Shed Area* (3921 & 3923 Floor Plans)                        |
| Tie-down Track in Garage* (3921 Floor Plan)   |
| 10 Bc Fire Extinguisher, Smoke Detector, Propane and Carbon Monoxide Detector                         |
| 10 Bc Fire Extinguisher in Garage (3921 & 3923 Floor Plans)   |
| 3923 Shed Room Accessories-Gear Track Channels, Golf Caddy, Bike Rack, Wall Gear Boxes & Mesh Baskets |
| Waste Basket in Kitchen Base  |
| <b>OPTIONS</b>  |
| Two Wheel Chocks in Garage Area*  |
| Auto Motion Power Window Shades with Remote Control on 3911   |
| Entry Step Well Cover for 3911  |
| Bathroom Floor Extended in Bedroom Area   |
| Luxury Vinyl Plank Floor in Place of Vinyl Tile   |



## CABINETS & FURNITURE

|   |
|---|
| Calypso Maple Cabinets with Mitered Designer Glazed Doors with Matte Finish                     |
| Concealed Hinges on Cabinet Doors   |
| Polished Solid Surface Countertop in Kitchen with Under Mounted Stainless Steel Sink and Covers |
| Solid Surface Countertops in Bathroom and Bedroom   |
| Drawers with Full Extension Guides  |
| Pull-Out Pantry Shelves*  |
| Flexsteel® Ultralux Leather Sofa and Driver Passenger Seats                                     |
| Dinette with Power Adjusted Table, Bench Seat & Folding Chair on 3911 Floor Plan                |
| Six-Way Power Driver Seat   |
| Manual Foot Rest On Passenger Seat  |
| Passenger Seat Work Station   |
| Lifts on Bed Top to Access Storage Area*  |
| Smooth Top Mattress   |
| Extended Rotation Concealed Hinge for Washer/Dryer Cabinet Door*                                |
| Lower Bed Base with Power Incline Head of Bed & Sleep Number Deluxe Mattress on 3911            |
| Rotating Sofa on 3921 Floor Plan  |

### OPTIONS

|  |
|--|
| Astoria Maple Glazed Cabinets with Mitered Designer Doors-Matte Finish                                   |
| Sienna Maple Glazed Cabinets with Mitered Designer Doors-Matte Finish                                    |
| Wicker Maple Glazed Hardwood Face Frame Cabinets and Slideout Fascia-Matte Finish                        |
| Bermuda Maple Glazed Hardwood Face Frame Cabinets and Mitered Designer Doors-Matte Finish                |
| Verona Glazed Maple Hardwood Face Frame Cabinets and Mitered Designer Doors-Matte Finish                 |
| Six Way Power for Passenger Seat   |
| Combination Desk/Dinette with Free Standing Hidden-Leaf Table with Four Chairs*                          |
| Combination Desk with Buffet Table (Two Fixed/Two Folding)*  |
| Combination Desk/Dinette with Roll Away Table (Two Fixed/Two Folding)*                                   |
| Free Standing Hidden Leaf Dinette Table with Four Chairs (Two Fixed/Two Folding)*                        |
| Dinette with Roll Away Table*  |
| Hide-A-Bed Sofa with Innerspring Mattress*   |
| Drop Down Bunk Bed Over Driver/Passenger Seats with Electric Release Latches & 32" TV in Front Overhead* |
| Drop Down Bunk Bed Over Driver/Passenger Seats with Electric Release Latches*                            |
| Sleep Number® Deluxe Air Mattress  |
| Plush Pillow Top Mattress  |
| Full Height Bed Base (3911 Only)   |

|   |
|---|
| Full Height Power Incline Retracting Bed Base (3911 Only)                               |
| Power Incline Retracting Bed Base with Sleep Number® Air Mattress                       |
| Electric Lift Bunk Beds with Seating, Pedestal Table and Removable Floor Rug in Garage* |
| 87" Bunk Sofa*  |
| Buffet Dinette*   |
| Buffet Dinette with Free Standing Table*  |
| Extenda Flex Dinette*   |
| Fireplace Under TV with 100" Side Hide-A-Bed with Innerspring Mattress*                 |
| Side Hide-A-Bed with End Wall Window* (3928 Only)                                       |
| Side Opening Hide-A-Bed Sofa with Innerspring Mattress*                                 |
| Cantilever Table with 2 Fixed and 2 Folding Chairs*                                     |

## APPLIANCES & ACCESSORIES

|  |
|--|
| Three-Burner Recessed Range with Oven*   |
| Norcold® 8 Cf. Refrigerator  |
| 30" Over the Range Microwave Oven*   |
| Flush Gas Cooktop Cover of Matching Countertop Material  |
| 10 gal. Gas/Electric Water Heater Direct-Spark Ignition*   |
| Continuous Flow Water Heater for 3928 & 3921 Floor Plans   |
| Microwave and Refer in Rear Deck Room on 3924  |
| Raised Panel Refer Door Insert Panel   |
| <b>OPTIONS</b>   |
| 30" Convection Microwave with Three-Burner Gas Cooktop and Dishwasher                              |
| 30" Convection Microwave with Three-Burner Gas Cooktop with Piezo Ignition                         |
| 30" Convection Microwave in Kitchen Overhead with Drawer Below Cooktop on 3911                     |
| Norcold® 12 Cf. Four-Door Refrigerator with Icemaker*  |
| Icemaker Added to Standard Norcold Refrigerator with Heated Water Line*                            |
| Icemaker Added to Standard Norcold® Refrigerator*  |
| Whirlpool 19.7 Cf. Refrigerator, 2000 Watt Pure Sine Inverter and Six 6-Volt Batteries*            |
| Frigidaire® 10 Cf. Refrigerator with Dedicated 1000 Watt Pure Sine Inverter & Two Extra Batteries* |
| Whirlpool® Two Piece Stacked Washer & Dryer*   |
| Central Vacuum with Tool Kit   |
| Whirlpool 19.7 Cf. Refrigerator with Six 6-Volt Batteries (3924 Only)                              |
| Prep for Two Piece Washer/Dryer  |
| Electric Fireplace in Living Area*   |
| 110 Volt Heat Pads for Holding Tanks   |



## AUDIO, VIDEO & ACCESSORIES

|  |
|--|
| Sony® LED TV and DVD Player in Living & Bedroom Area (TV Sizes Vary Per Floor Plan)        |
| AM/FM/CD Dash Radio with Harman/JBL 180 Watt Sound System                                  |
| Exterior AM/FM/DVD Radio with Two Speakers Inside 3921 Garage Area & Two Outside Speakers* |
| High Definition Component Wiring   |
| Rearview Color Monitor System with Audio   |
| Winegard Digital Crank Up TV Antenna   |
| Two Bedroom Radio Speakers with On/Off Switch  |
| Satellite Prep on Roof   |
| TV Jack and 110 Volt Recept in Door Side Exterior Storage Compartment                      |
| Bluetooth Microphone for Sony® Dash Radio  |
| <b>OPTIONS</b>   |
| Sirius® Satellite Radio with Antenna (Does not include monthly subscription)               |
| Sony® 40" LED TV in Front Overhead*  |
| Sony® 48" Televator TV with Fireplace in Place of Front Overhead TV on 3911                |
| Winegard® Automatic Dome Satellite Dish  |
| Winegard Automatic Open Face Dish  |
| Winegard in Motion Dome Satellite Dish   |
| Winegard Rayzar Automatic Digital TV Antenna   |
| Winegard Automatic Open Face Satellite Dish  |
| Winegard Cellular In Motion WiFi and prep  |
| Sony® 32" LED TV in Garage*  |
| Exterior Entertainment Center in Sidewall with Sony® 32" LED TV and Radio/CD               |
| Exterior Entertainment Center in Storage Compartment with Sony® 32" LED TV and Radio       |
| Sideview Cameras Displayed onto Rearview Monitor Screen with Smartphone Connection         |
| Blu-ray Disc Players   |
| Bose® Solo 5 Soundbar Sound System   |
| WiFiRanger Skypro Pack Router  |
| Xite Dash Radio, 6" Monitor with Rand McNally Navigation                                   |
| Two - 11" LCD Flip Down Monitor/DVD Players at Bunks                                       |

# THE NEWMAR CUSTOMER EXPERIENCE

The Newmar Difference goes beyond our industry-leading motor coaches to deliver you with an unrivaled ownership experience.



## QUALITY FROM THE START

Every Newmar is crafted one at a time by folks who have spent an average of eight years building them. And each coach we assemble must undergo more than 1,000 quality checks before ever leaving the Newmar factory.



## EVERYTHING IN ONE PLACE

As a Newmar owner, you'll find resources specific to your coach through **Newgle**, an easy-to-use knowledge base that houses everything from user guides to technical support documents.



## FRIENDS FOR LIFE

Join Newmar and meet fellow owners through the **Newmar Kountry Klub**, a top social club for RV travelers. Or, connect using the world's only social sharing network created for RVers, by RVers — **RoadLens.io**.



## SEAMLESS SERVICE

Available 24/7, our service specialists guarantee dealer repair authorization within four hours, and all in-stock parts ship the same day, free of charge. If a part is out of stock, we'll pull it from our production floor or order the part from the appropriate vendor right away.



## ROCK-SOLID WARRANTY COVERAGE

All models include a 1-year/unlimited mileage limited warranty and a 5-year, non-transferable structural warranty that covers your vehicle's superstructure in the event it fails to perform. Ask your Newmar dealer for details.



## A. ROOF

---

BriteTEK™ Roof with  
Walkable Decking

Batten Insulation

A/C Ducting

16" on Center Aluminum  
Rafter Framing

Kraft Paper Vapor Barrier

5/8" Bead Foam

3/16" Panel

Padded Vinyl Overlay

## B. SIDEWALL

---

Interior Wall Panel

5/8" Bead Foam

Kraft Paper Vapor Barrier

Batten Insulation

Composite One-Piece  
Gelcoat Exterior Sidewall

Aluminum Framing

## C. FLOOR

---

Carpet/Tile

Carpet Padding

5/8" Floor Decking

Fiberglass Batten Insulation

16" on Center Wood Framing

Polyethylene Moisture Barrier

## D. EXTERIOR

---

13.5M Penguin™ Central  
Air Conditioners

One-Piece Bonded Windshield

Coated Aluminum Wheels

Frameless, Double-Pane,  
Tinted Safety-Glass Windows

Side-Hinged Baggage Doors

# OUR PARTNERS

*Newmar Quality Begins With The Company We Keep*

Newmar only works with suppliers dedicated to providing our customers with unrivaled quality, comfort and convenience. Best-in-class performance from names you can trust. At Newmar, that's our difference, and our promise.

## **BASF**

The Coatings division of BASF is a global expert in the development and production of innovative and sustainable OEM and refinish coatings. Coatings by BASF – solutions beyond your imagination.

## **Flexsteel**

Flexsteel Recreation offers innovative furniture designed for a life that rarely sits still. Comfortable and space-saving, Flexsteel furniture ensures your RV is always ready for dining, sleeping or hosting guests.

## **Freightliner Custom Chassis**

Freightliner Custom Chassis are renowned for their exceptional ride, excellent maneuverability, advanced chassis technology, and nationwide 24/7 factory-direct support.

## **Industrial Finishes**

Industrial Finishes has supported RV manufacturers for over four decades. The Industrial Finishes paint process delivers uncompromising quality, providing your coach with a true Masterpiece™ finish.

## **Sony**

Beautifully designed Sony TVs & Blu-ray players deliver an immersive picture and true-to-life sound. Revolutionize every aspect of your home entertainment experience with Sony.

## **Spartan Motors**

An American company with over 30 years of experience designing and manufacturing the premier motorhome chassis, which deliver superior performance, exceptional safety ratings, and industry-leading technology.





## THE NEWMAR LEGACY

*50 years, built one by one.*

Driven to engineer and build the highest-quality RVs the world had ever seen, Marvin Miller and Marvin Newcomer founded Newmar Corporation in 1968.

The pair set up shop in the small Midwest woodworking town of Nappanee, Indiana, where they discovered the people who would establish Newmar as a leading RV manufacturer over the next half century. Artisans and engineers, product designers and quality-control experts to whom being the best is more important than being the biggest.

As we move toward 100 years as a company, our products will continue to evolve. But one thing that will never change is our commitment to hand-crafting excellence, one coach at a time.





Colton RV  
North Tonawanda, NY 14120  
(716) 694-0188  
(800) 628-4889  
[www.ColtonRV.com](http://www.ColtonRV.com)

Colton RV  
Orchard Park, NY 14127  
(716) 957-3250  
(800) 628-4889  
[www.Coltonrv.com](http://www.Coltonrv.com)

