



Dutchmen

Family of
Travel Trailers & Fifth Wheels



Lite, Classic, Laminate & Supreme

2001 Lites

The 2001 Dutchmen Lite travel trailers and fifth wheels are your best choice for quality and function at an affordable price. Lites are specifically designed to be towed by many of today's most popular vehicles. You may already be driving the vehicle you need for towing. But you won't have to sacrifice

comfort or convenience to get the lite towing advantage. Our lites are built with the same quality materials and workmanship as the other Dutchmen family members. With lengths up to 32' and many new and inviting floor plans, there is sure to be a lite model to fit your family's needs.



The Dutchmen Lite gives you all the advantages of much larger trailers without giving up comfort and convenience. Our lites pack a lot of living into their smaller size. Living areas are carefully planned to take maximum advantage of space and are designed and decorated for comfort.



Residential appliances, larger sinks, and a bedroom with all the features you find at home, we have done a lot to make sure that you'll love your new home away from home. Kick back, relax, and enjoy your new Dutchmen Classic.



At Dutchmen, we pay attention to detail and make sure that we give you the features that are most important to your family. We use our experience to make sure your camping experience is the best.



Holiday Blue, Green or Taupe



Donaquil Blue



Cassandra Green

You'll find you don't have to give up a lot of comfort or convenience for the sake of lightweight towing. Kitchens are designed to take advantage of every bit of available space and give you all the conveniences of home.

Available in a wide selection of both trailer and fifth wheel floor plans, and three distinctive interior colors, there is sure to be a Lite to fit your camping lifestyle.



New for 2001 is "Storage Plus". We designed all our models to give you abundant storage for all your camping gear. Both inside and out, you'll find a place for everything you need to enjoy the great outdoors. Whether large or small, you won't have to worry about leaving it at home.



2001 Lite Travel Trailer Floor Plans

19FL



Opt. bunk over double bed

26BH



Opt. B, P, S

22BH



Opt. B, P, S

26FK



Opt. C

24QB



Opt. C

26FL



Opt. C

24QB-SSL



Opt. C

26QB-SSL



Opt. C

26RL-DSL



Opt. C

30BH



Opt. B, C, P, S

28BH



Opt. C, S

30FK



Opt. C

28BH-SSL



Opt. C, S

31BH-4



Floor Plan Options



OPTION: B
REAR DOUBLE BED



OPTION: C
TWIN BEDS AVAILABLE IN PLACE OF
STANDARD BEDS FRONT OR REAR BEDROOM



OPTION: P
REAR DOUBLE BED W/BUNK



OPTION: S
TRIPLE BUNK BEDS

2001 Lite Fifth Wheel Floor Plans

24RD-M5



Opt. C

26BH-M5



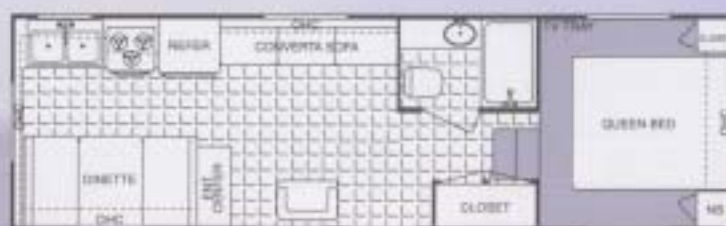
Opt. C, S

24RK-M5



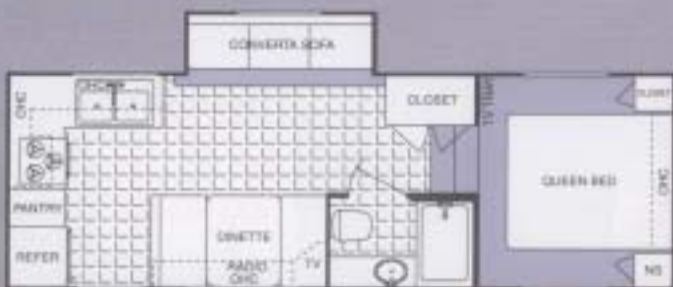
Opt. C

26RK2-M5



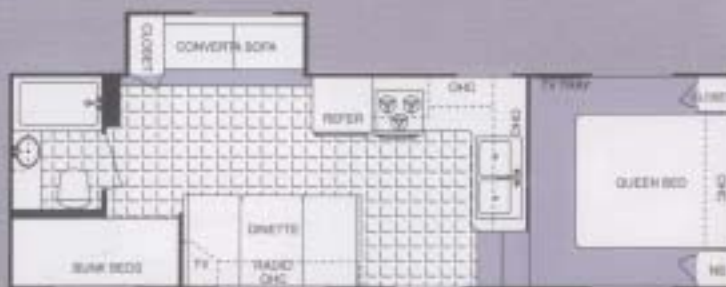
Opt. C

25QB-M5-SSL



Opt. C

26BH-M5-SSL



Opt. C, S

2001 Lite Specifications & Weights

Travel Trailers

	19FL	22BH	24QB	24QB-SSL	26BH	26FK	26FL	26QB-SSL	26RL-DSL	28BH	28BH-SSL	30BH	30FK	31BH4
Length	20'5"	23'5"	25'5"	26'5"	27'5"	27'5"	27'5"	27'5"	29'11"	29'5"	31'	31'5"	31'5"	32'5"
Exterior Width	8'	8'	8'	8'	8'	8'	8'	8'	8'	8'	8'	8'	8'	8'
Exterior Height	9'10"	9'10"	9'10"	9'10"	9'10"	9'10"	9'10"	9'10"	10'10"	9'10"	9'10"	9'10"	9'10"	9'10"
Interior Height	78"	78"	78"	78"	78"	78"	78"	78"	78"	78"	78"	78"	78"	78"
Hitch Dry Weight	556	582	432	642	588	804	766	510	684	460	576	518	804	616
GVWR	7556	7582	7432	7642	7588	7804	7766	7510	7684	7460	7576	7518	7804	7616
UVW	3850	4062	4432	4812	4894	4916	4842	5142	6222	5040	5472	5274	5226	6118
NCC	3706	3520	3000	2830	2694	2888	2924	2368	1462	2420	2104	2244	2578	1498
Fresh Water (approx.)	40	40	40	40	40	40	40	40	40	40	40	40	40	40
Dual Holding Tanks (approx.)	60	60	60	60	60	60	90	90	50	60	90	60	60	60
Tire Size	ST205/75R14C	ST205/75R14C	ST205/75R14C	ST205/75R14C	ST205/75R14C	ST205/75R14C	ST205/75R14C	ST205/75R14C	ST205/75R15C	ST205/75R14C	ST205/75R14C	ST205/75R14C	ST205/75R14C	ST205/75R15C
Furnace Size BTU'S	20	20	20	25	25	25	25	25	31	30	31	30	30	31

Fifth Wheels

	24RD-M5	24RK-M5	25QB-M5-SSL	26BH-M5	26RK2-M5	26BH-M5-SSL
Length	24'5"	24'11"	25'5"	26'11"	26'11"	26'11"
Exterior Width	8'	8'	8'	8'	8'	8'
Exterior Height	10'10"	9'10"	9'10"	9'10"	9'10"	9'10"
Interior Bedroom Height	46"	46"	46"	46"	46"	46"
Hitch Dry Weight	824	878	868	1052	894	922
GVWR	7824	7878	7868	8032	7894	7922
UVW	6218	5178	5530	5466	5562	5780
NCC	1606	2700	2538	2566	2332	2142
Fresh Water (approx.)	40	40	40	40	40	40
Dual Holding Tanks (approx.)	60	60	60	60	60	90
Tire Size	ST205/75R15C	ST205/75R14C	ST205/75R14C	ST205/75R14C	ST205/75R14C	ST205/75R14C
Furnace Size BTU'S	31	25	25	25	25	25



Vehicle Loading—Every effort has been made to provide the greatest number of options for the recreation vehicle owner. Along with these choices comes the responsibility to manage the loads that are imposed by the choices so that they remain within the manufacturer's specified chassis weight limits. Do not overload the recreation vehicle.

The weights listed on standard features, optional equipment, are included. Net carrying capacity (NCC) determined by subtracting individual vehicle weight (UVW) from gross vehicle weight (GVWR) and includes fluids, options and cargo. Liquid capacities and weights are approximate only.

Warning: This information is provided as a guide only. Weights of individual vehicles may vary. Consult your owner's manual for complete loading, weighing and towing instructions.

Lite Specifications & Options

Exterior

30" radius entry door (most floor plans)
Flush combo entry latch/dead bolt lock
Hitch light
Patio light
Front flush mount combination window/rock guard
Radius exterior "Storage Plus" (where possible)
Rain gutter w/corner downspout along the roof line
Tinted radius clamp ring windows
Pre-wired for digital satellite system
Rear bumper with sewer hose storage
Twin 20# LP bottles with cover
Locking insulated luggage doors with finger pulls

Construction

Track guided electric powered flush floor slide-out system in living room large slide (26RL-DSL and 24RD-M5 only)
Manual slide-out system on "SSL" models
1 1/2" x 2" walls on 16" centers
2" belt rail around the perimeter for extra strength
Fiberglass insulation
Reinforced studding around all entry doors and windows
Construction tube steel or I-beam cambered chassis
Large support outriggers w/solid continuous weld
5/8" exterior grade tongue and groove plywood floor
3/8" wood roof decking full length of the unit
One piece seamless EPDM rubber roof
Radius 5" truss roof rafters
Tandem axles with 4 wheel electric brakes
Standard double or triple entry steps
New quad lock slide seal

Interior

3 color coordinated designer interiors
Solid oak framed cabinet doors

Mini-blinds throughout
Decor coordinated bedspread
Quality furniture
Skylight roof vents
Innerspring mattress
Designer valances
Double bowl stainless steel sink
Laminated countertops
Medicine cabinet with mirror
Towel bar
12 volt power exhaust roof vent in bath
Shower curtain
GFI protected 120 volt duplex receptacle
Decor wall border in kitchen
ABS tub surround

Appliances/Equipment

Norcold gas/electric refrigerator
3 burner high-output range
6 gallon quick recovery gas/electric water heater
Hydro flame forced air, DSI furnace with wall thermostat
Smoke detector
Fire extinguisher
LPG leak detector
Prepped for exterior 2 burner stove
Demand water pump
Water heater bypass
AM/FM stereo with cassette player
TV antenna with power booster
Cable TV hook-up
Range hood with 12 volt light and exhaust fan
Wall mounted systems monitor panel
Thetford toilet
Solid state converter with built in battery charger
120 volt duplex receptacles throughout
120 volt patio receptacle

Options

(Not all options available on all floor plans)
Rear ladder
Spare tire kit with carrier and cover
Front or rear stabilizer jacks
Electric front jacks — Fifth wheels
Power tongue front jack — Travel trailers
Outside shower
Exterior 2 burner stove
Exterior entertainment center
Bike rack for 2 or 4 bikes
12 volt ultra heat pads - all tanks
Rear stone guard (some models)
Safety glass
Reese 15k fifth wheel hitch
Living room carpet and pad
Bedroom carpet and pad
12 volt CD player replacing cassette
Solid oak cabinet doors throughout
Swivel rocker
Phone jack
Hide a bed sofa (26RL-DSL and 24RD-M5 only)
Fantastic fan with rain sensor
Skylight in tub area
Bi-fold shower door
6 gallon gas/electric water heater with DSI
Solid oak raised refer front
Double door refer
3 burner range with oven replacing 3 burner cooktop
Sink cover
Stove cover
13.5 BTU air conditioner (ducted on 24RD-M5 and 25' and up)
Microwave
30# bottles with cover
A&E patio awning
Water filter

2001 Classics

(Available with Fiberglass Laminated Aluminum Framed Walls/Supreme Package)

True classic in every sense, the Dutchmen Classic travel trailers and fifth wheels display all the quality and value that you are looking for in your RV. Take a peek at the 2001 Dutchmen Classic and you will find all the comfort and convenience of home.

Our years of experience and constant attention to our customers have taught us what you most want in an RV and we've put that knowledge into designing the finest selection of floor plans we've ever offered. There is sure to be a 2001 Dutchmen Classic that is just right for your family's lifestyle.

Beautiful interiors are designed with you in mind. Residential decors, full window treatments and standard mini-blinds all add to the appeal of your new Dutchmen.





Opal Blue

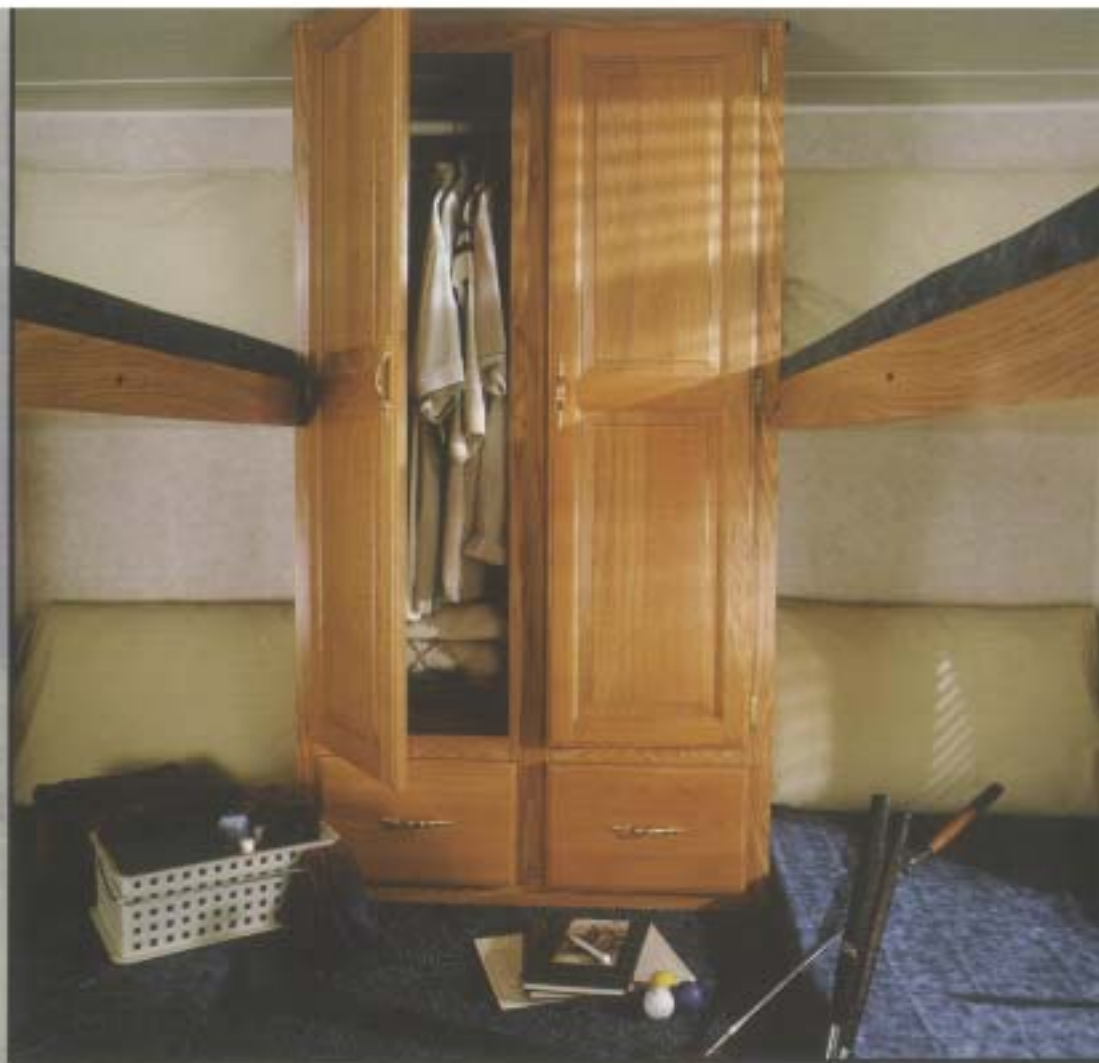


Goodwin Green



Sundance Taupe

With superior design and construction, high quality appliances, beautiful cabinetry, stylish luxurious fabric choices, and fine furniture, there is simply no other trailer that gives you so much for your investment.



Our all-new "Storage Plus" insures that you will find a place to put all your camping needs. Whether it is groceries or sleeping bags, we managed to find a place for it.



Classic Specifications & Options

Exterior

30" radius entry door (most floor plans)
Flush combo entry latch/dead bolt lock
Hitch light
Patio light
Radius exterior "Storage Plus" (where possible)
Rain gutter w/corner downspout along the roof line
Tinted radius clamp ring windows
Pre-wired for digital satellite system
Rear bumper with sewer hose storage
Duo pane patio sliding door on 36'-up travel trailers
Twin 30# LP bottles with cover
Locking insulated luggage doors with finger pulls

Construction

Track guided electric powered flush floor slide-out system in living room large slide
2" x 2" walls on 16" centers
2" belt rail around the perimeter for extra strength
Fiberglass insulation
Reinforced studding around all entry doors and windows
Construction tube steel or I-beam cambered chassis
Large support outriggers w/solid continuous weld
5/8" exterior grade tongue and groove plywood floor
3/8" wood roof decking full length of the unit
One piece seamless EPDM rubber roof
Radius 5" truss roof rafters
Tandem axles with 4 wheel electric brakes
Standard double or triple entry steps
New quad lock slide seal system

Interior

3 color coordinated designer interiors
Solid oak framed cabinet doors
Mini-blinds throughout except bunks
Decor coordinated bedspread
Quality furniture
Skylight roof vents
Innerspring mattress
Designer valances
Double bowl stainless steel sink

Laminated countertops
Medicine cabinet with mirror
Towel bar
12 volt power exhaust roof vent in bath
Shower curtain
GFI protected 120 volt duplex receptacle
Sink cover
Stove cover
Decor wall border in kitchen
ABS tub surround
Living room carpet
Master bedroom carpet

Appliances/Equipment

Norcold double door gas/electric refrigerator
Microwave
3 burner high-output range with oven
6 gallon quick recovery gas/electric water heater
Hydro flame forced air, DSI furnace with wall thermostat
Smoke detector
Fire extinguisher
LPG leak detector
Prepped for exterior 2 burner stove
Demand water pump
13.5 BTU ducted air conditioner
Water heater bypass
AM/FM stereo with cassette player
TV antenna with power booster
Cable TV hook-up
Range hood with 12 volt light and exhaust fan
Wall mounted systems monitor panel
Thetford toilet
110 volt residential style refer on travel trailers 36' and up
Solid state converter with built in battery charger
120 volt duplex receptacles throughout
120 volt patio receptacle
A&E patio awning

Options

(Not all options available on all floor plans)
Fiberglass laminated aluminum welded framed sidewalls

Rear ladder
Water filter
Spare tire kit with carrier and cover
Front or rear stab jacks
Electric front jacks - Fifth wheels
Power tongue front jack - travel trailers
Outside shower
Exterior 2 burner stove
Exterior entertainment center
Entry assist handle
Bike rack for 2 or 4 bikes
12 volt ultra heat pads - all tanks
Rear stone guard
Safety glass
Reese fifth wheel hitch
12 volt CD player replacing cassette
Solid oak cabinet doors throughout
Recliner
Swivel rocker
Phone jack
Ceiling fan (fifth wheels 30' and up)
Hide a bed sofa (slide-out models only)
15,000 BTU A/C
Vinyl throughout except slide
Fantastic fan with rain sensor
Skylight in tub area
Shower in place of tub
6 gallon gas/electric water heater with DSI
10 gallon gas/electric water heater with DSI
Solid oak raised refer front
Larger Norcold double door gas/electric refrigerator
SUPREME PACKAGE
Totally enclosed and insulated underbelly
Fiberglass laminated aluminum welded sidewalls
Solid oak raised refer front (n/a on 110 volt refer)
6 gallon gas/electric water heater with DSI
Skylight over tub
Upgrade graphic package
Upgrade lighting package
Extra large refer (n/a on 110 volt refer)
Day/night shades
50 amp solid state converter
15 BTU A/C
Phone jack
Bi-fold shower door
12 volt CD player replacing cassette
Solid oak cabinet doors throughout

2001 Classic Travel Trailer Floor Plans

27FK-DSL



30FK



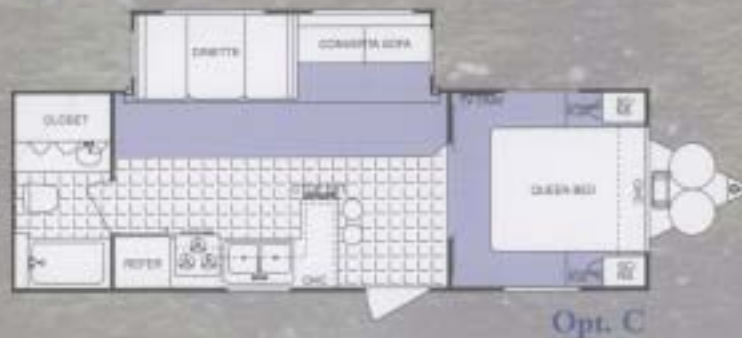
27SRV (Sport Recreational Vehicle)



30RL-DSL



28FB-DSL



31BH4-DSL



31BH-DSL



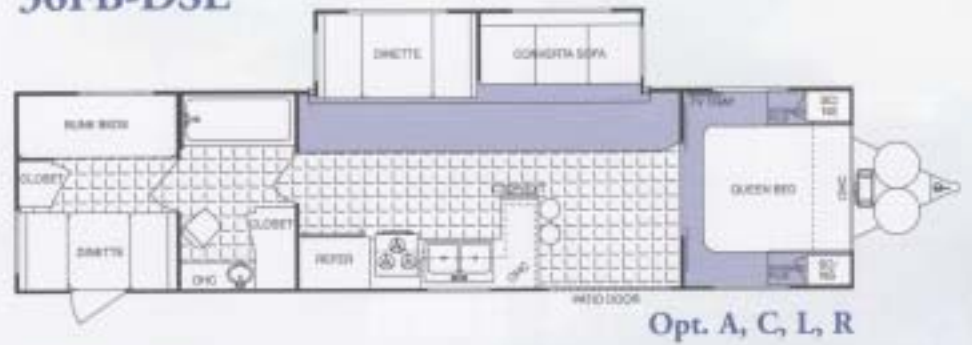
31FK-DSL



33FK-DSL



36FB-DSL



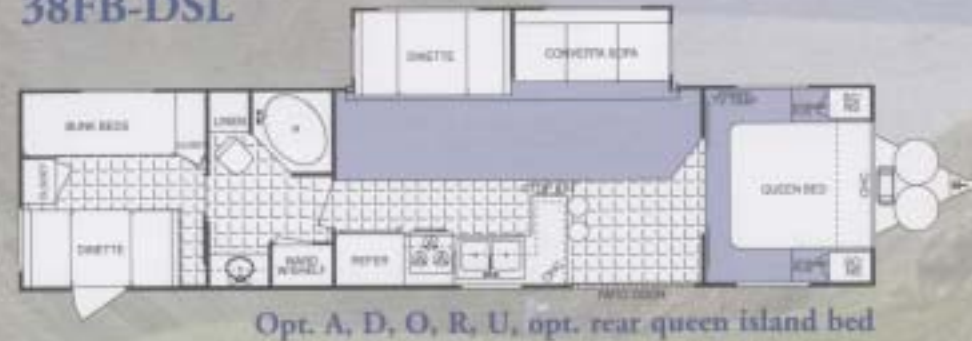
36FK-DSL



38BHBS-DSL



38FB-DSL



2001 Classic Fifth Wheel Floor Plans



24RL-M5

Opt. C



30RK-H5

Opt. C



26RK-M5

Opt. C



30RL-H5

Opt. C



27BH-M5

Opt. B, C, P, S



33ES-H5

Opt. C



27RK-H5

Opt. C



35BH-H5

Opt. B, C, N, O, S, T, P

2001 Classic Specifications & Weights

Travel Trailers

	27FK-DSL	27SRV	28FB-DSL	30FK	30RL-DSL	31BH4-DSL	31BH-DSL	31FK-DSL	33FK-DSL	36FB-DSL	36FK-DSL	36BHBS-DSL	38FB-DSL
Length	28'5"	30'2"	29'5"	31'5"	32'8"	33'	32'5"	32'5"	34'5"	38'	38'	39'5"	39'5"
Exterior Width	8'	8'	8'	8'	8'	8'	8'	8'	8'	8'	8'	8'	8'
Exterior Height	10'10"	11'9"	10'10"	9'10"	10'10"	10'10"	10'10"	10'10"	10'10"	10'10"	10'10"	10'10"	10'10"
Interior Height	78"	78"	78"	78"	78"	78"	78"	78"	78"	78"	78"	78"	78"
Hitch Dry Weight	786	944	922	922	n/a	760	734	886	1222	824	1120	1132	1150
GVWR	7786	11104	7922	7922	n/a	9560	9534	9686	10022	9624	9920	11292	11310
UVW	6350	7150	6086	5562	n/a	6994	6790	6990	7080	7560	7792	8162	7966
NCC	1436	3954	1836	2360	n/a	2566	2744	2696	2942	2064	2128	3130	3344
Fresh Water (approx.)	40	100	40	40	40	40	40	40	40	40	40	40	40
Dual Holding Tanks (approx.)	90	60	50	60	60	50	50	90	90	60	90	60	60
Tire Size	ST205/75R15C	ST225/75R15D	ST205/75R15C	ST205/75R15C	ST225/75R15D	ST225/75R15D	ST225/75R15D	ST225/75R15D	ST225/75R15D	ST225/75R15D	ST225/75R15D	ST225/75R15D	ST225/75R15D
Furnace Size BTU'S	31	31	31	31	35	35	35	35	35	35	35	35	35

Fifth Wheels

	24RL-M5	26RK-M5	27BH-M5	27RK-H5	30RK-H5	30RL-H5	33ES-H5	35BH-H5
Length	24'11"	26'11"	30'6"	27'11"	30'11"	30'11"	34'6"	35'5"
Exterior Width	8'	8'	8'	8'	8'	8'	8'	8'
Exterior Height	11'6"	11'6"	11'6"	12'1"	12'1"	12'1"	12'1"	12'1"
Interior Bedroom Height	46"	55"	55"	71"	71"	71"	71"	71"
Hitch Dry Weight	884	1066	1090	1162	1362	1476	2138	1604
GVWR	7884	9866	9890	9962	10162	10276	12298	11764
UVW	6320	6894	6682	7060	7542	6966	9554	8410
NCC	1564	2972	3208	2902	2620	3310	2744	3354
Fresh Water (approx.)	40	40	40	40	40	40	40	40
Dual Holding Tanks (approx.)	60	90	50	90	90	90	90	90
Tire Size	ST205/75R15C	ST225/75R15D	ST225/75R15D	ST225/75R15D	ST225/75R15D	ST225/75R15D	ST225/75R15D	ST225/75R15D
Furnace Size BTU'S	31	31	31	31	35	35	35	35

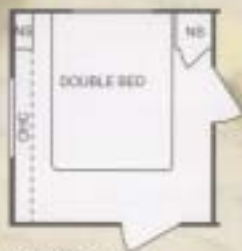


Vehicle Loading—Every effort has been made to provide the greatest number of options for the numerous vehicle owners. Along with these choices comes the responsibility to manage the loads that are imposed by the choices so that they remain within the manufacturer's specified gross weight limits. Do not exceed the maximum vehicle weight.

Our weights based on standard factory optional equipment not included. Net carrying capacity (NCC) determined by subtracting unloaded vehicle weight (UVW) from gross vehicle weight (GVWR) and including fluids, options and cargo. Digital capacities and weights are approximations only.

Warning: This information is intended as a guide only. Weights of individual vehicles may vary. Consult your owners manual for complete loading, weighing and towing instructions.

Optional Floor Plans



OPTION: A
REAR DOUBLE BED



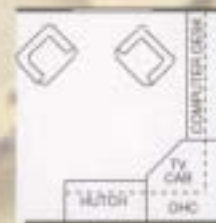
OPTION: B
REAR DOUBLE BED



OPTION: C
TWIN BEDS AVAILABLE IN PLACE OF
STANDARD BEDS FRONT OR REAR BEDROOM



OPTION: D
BUNKS OVER TWINS



OPTION: G



OPTION: H
REAR BUNK BEDS



OPTION: J
REAR BUNK BEDS & DINETTE
TT ONLY



OPTION: K
BED SLIDE FW ONLY



OPTION: L
BUNKS OVER TWINS FRONT OR REAR



OPTION: M
TT ONLY



OPTION: N
REAR BED ONLY



OPTION: O



OPTION: P
REAR DOUBLE BED W/ BUNK



OPTION: R



OPTION: S



OPTION: T
REAR BUNK BEDS & DINETTE FW ONLY



OPTION: U
TWIN BEDS AVAILABLE IN PLACE OF
STANDARD BEDS
FRONT WINDOW ON TT ONLY

Optional Accessories



2 or 4 bike rack



Outside
entertainment center



Outside exterior 2
burner stove

Just Show Your Card and Go!

We build our products better and we protect you with the industry's best warranty coverage, but we know that sometimes things can go wrong on the road. So when you become the proud owner of a new Dutchmen, it's just the beginning of our exclusive 'round-the-clock Customer Care Program.

Customer Care provides complete and fully paid roadside assistance, emergency road service, and special warranty support benefits that go with you wherever you travel. You get immediate access to fast, dependable service when and where you need it.

Add our toll-free warranty and service appointment assistance and a technical assistance hot-line and you have the security and peace of mind of full-time support.

Our exclusive 24-hour Customer Care benefits include:

- Fully paid emergency roadside assistance
- Free jump starts
- Free fuel delivery
- Free lock-out service
- Free on-site mechanical service in the event of a break-down
- 24-hour technical hot-line
- Toll-free service appointment scheduling nationwide
- Warranty service assistance at over 6,800 qualified service agencies
- Free customer trip routing and map service.

At Dutchmen we want you to be able to enjoy your new trailer or fifth wheel to the fullest. That's why we've provided Dutchmen Customer Care to take care of the problems that could spoil your travels.



THE INDUSTRY'S BEST WARRANTY—BY FAR!

We're so confident in the design and construction of our products that they are covered by Thor's exclusive Full 2-Year Standard Warranty: "Hitch-to-bumper" coverage to protect your RV investment.

*Your Full 2-Year Warranty Includes:**

- Refrigerator
- Slide-out Mechanisms
- LP tanks
- Furnace
- Range
- Power converter
- Water heater
- Microwave
- Plumbing
- TV antenna
- Water pump
- Electrical
- Lavatory
- House stereo
- Doors
- Awnings
- ... and much more

*See individual company warranty statements for details.



THOR
AMERICA'S BEST RV VALUE

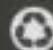
DUTCHMEN MANUFACTURING
305 Steury Ave. • Goshen, IN 46528
219-534-1224

Why a Thor Product Is Your Best RV Value.

Thor Industries, Inc., listed on the New York Stock Exchange, proudly traces its history back seventy years to the pioneering days of the RV industry with the founding of Airstream, the industry's oldest and most renowned brand. Our total commitment to quality and our philosophy of putting our customers first has led to our continuous growth; today Thor is the second largest builder of RVs in North America. Thor's strong financial condition and years of solid growth are your assurance that we will be here to serve you for years to come. We think this extra peace of mind is important when you are making a significant investment. Because we are #2, we work harder than other manufacturers to satisfy you. Our customers are always #1 with us.



305 Steury Ave. • Goshen, IN 46528
219.534.1224 • Fax 219.533.3807
www.dutchmen-rv.com

 This brochure is printed on recycled paper as part of Thor's corporate effort to minimize waste and conserve our natural resources. Providing safe, fuel-efficient recreational vehicles is Thor's way of further demonstrating our role as the industry leader in safeguarding our nation's environment.

Your Local Dealer

Colton RV & Marine
3122 Niagara Falls Blvd.
North Tonawanda, NY 14120
(716) 694-0188
www.ColtonRV.com

Colton RV
489 Bushkill Plaza LN #9665
Wind Gap, PA 18091
(610) 863-5239
www.ColtonRV.com

Product information, specifications, and photography in this brochure were as accurate as possible at time of printing. Photographs may contain some features that are optional on your vehicle. Since we continuously strive to improve our products, actual products may differ. Prices and specifications are subject to change without notice. All capacities are approximate and dimensions are nominal. Some features or options may be different or unavailable in Canada.